



**REGIONAL SPECIALISED METEOROLOGICAL CENTRE-TROPICAL CYCLONES, NEW DELHI
TROPICAL WEATHER OUTLOOK**

DEMS-RSMC TROPICALCYCLONES NEW DELHI DATED 26.08.2022

**TROPICAL WEATHER OUTLOOK FOR NORTH INDIAN OCEAN (THE BAY OF BENGAL OF BENGAL OF BENGAL OF BENGAL AND ARABIAN SEA) VALID FOR NEXT 120 HOURS
ISSUED AT 0630UTC OF 26.08.2022 BASED ON 0300 UTC OF 26.08.2022.**

BAY OF BENGAL:

YESTERDAY'S WELL MARKED LOW PRESSURE AREA OVER SOUTHEAST PAKISTAN & ADJOINING SOUTHWEST RAJASTHAN WEAKENED INTO A LOW PRESSURE AREA OVER THE SAME REGION AT 1200 UTC OF 25TH AUGUST, 2022. IT PERSISTED OVER THE SAME REGION AT 0300 UTC OF TODAY, THE 26TH AUGUST 2022. AS PER INSAT 3D IMAGERY AT 0300 UTC, VORTEX LAY OVER SOUTH PAKISTAN & NEIGHBOURHOOD & ASSOCIATED SCATTERED TO BROKEN LOW AND MEDIUM CLOUDS WITH ISOLATED WEAK TO MODERATE CONVECTION OVER SOUTH PAKISTAN & NEIGHBOURHOOD

A FRESH CYCLONIC CIRCULATION LAY OVER SOUTHWEST BAY OF BENGAL & NEIGHBOURHOOD AT 3.1 KM ABOVE MEAN SEA LEVEL.

SCATTERED LOW AND MEDIUM CLOUDS WITH EMBEDDED INTENSE TO VERY INTENSE CONVECTION OVER SOUTH BAY OF BENGAL AND ANDAMAN SEA. SCATTERED LOW AND MEDIUM CLOUDS WITH EMBEDDED MODERATE TO INTENSE CONVECTION OVER NORTHEAST AND EASTCENTRAL BAY OF BENGAL.

PROBABILITY OF CYCLOGENESIS (FORMATION OF DEPRESSION) DURING NEXT 120 HRS:

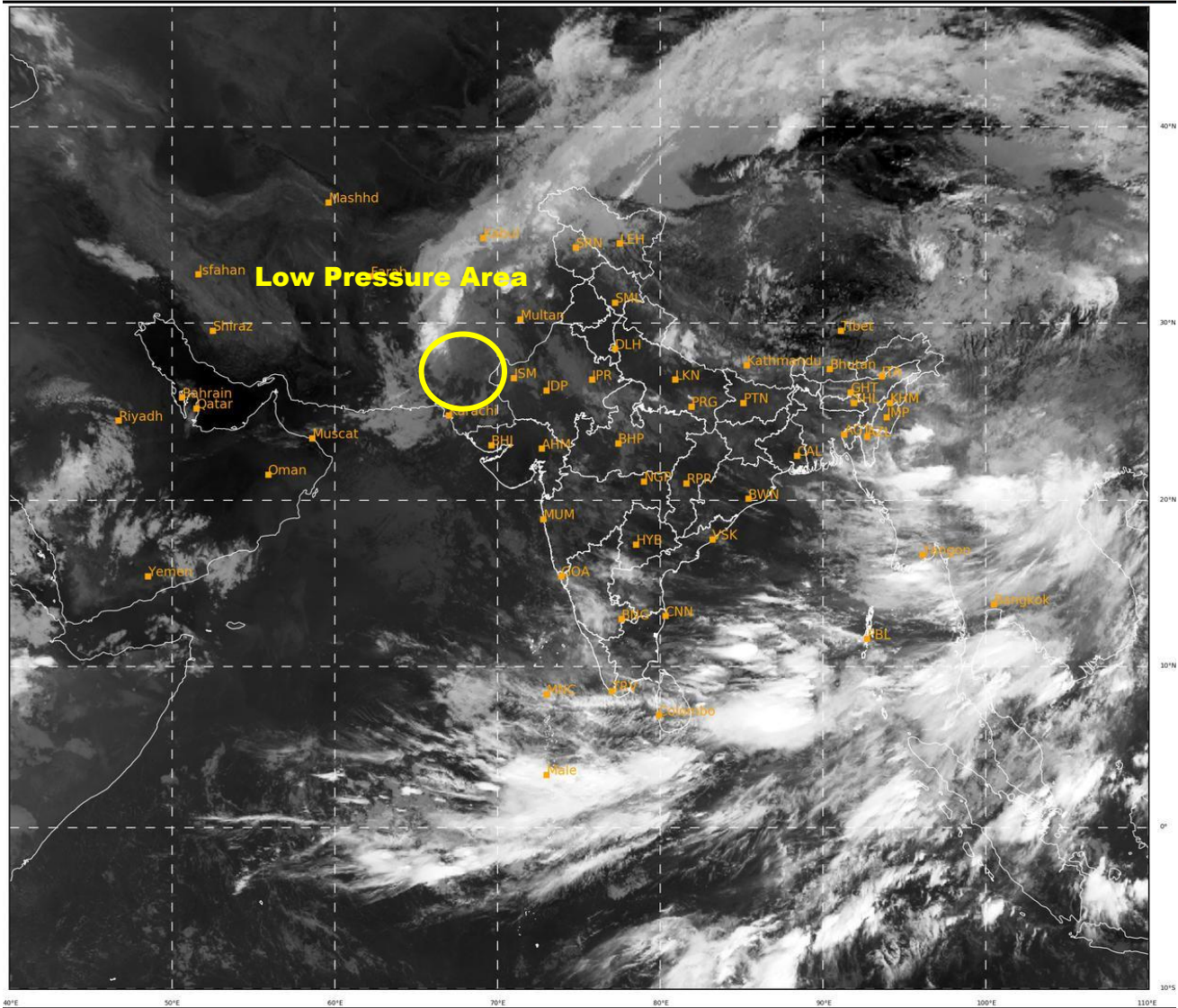
| 24 HOURS | 24-48 HOURS | 48-72 HOURS | 72-96 HOURS | 96-120 HOURS |
|----------|-------------|-------------|-------------|--------------|
| NIL | NIL | NIL | NIL | NIL |

ARABIAN SEA:

SCATTERED LOW AND MEDIUM CLOUDS WITH EMBEDDED MODERATE TO INTENSE CONVECTION LAY OVER SOUTHEAST ARABIAN SEA, LAKSHADWEEP ISLANDS AND COMORIN AREA.

PROBABILITY OF CYCLOGENESIS (FORMATION OF DEPRESSION) DURING NEXT 120 HRS:

| 24 HOURS | 24-48 HOURS | 48-72 HOURS | 72-96 HOURS | 96-120 HOURS |
|----------|-------------|-------------|-------------|--------------|
| NIL | NIL | NIL | NIL | NIL |



454

937

IMD, DELHI

Cloud distribution: (a) Isolated: <25%, Scattered:25-50%, Broken: 51-75%, Solid:>75%, Convection Intensity: (a) Weak: Cloud Top Temperature (CTT) >-25°C, (b) Moderate: CTT: - 25°C to -40°C, (c) Intense: CTT: - 41°C to -70°C and (d) Very Intense: : Less than -70°C
PROBABILITY OF CYCLOGENESIS (FORMATION OF DEPRESSION):NIL: 0%, LOW: 1-33%, MODERATE: 34-66% AND HIGH: 67-100%
This is a guidance Bulletin for WMO/ESCAP Panel Member countries. Visit respective National websites for Country specific Bulletins