



**REGIONAL SPECIALISED METEOROLOGICAL CENTRE-TROPICAL CYCLONES, NEW DELHI  
TROPICAL WEATHER OUTLOOK**

**DEMS-RSMC SPECIAL TROPICAL CYCLONES NEW DELHI DATED 29.10.2022**

**TROPICAL WEATHER OUTLOOK FOR NORTH INDIAN OCEAN (THE BAY OF BENGAL AND THE ARABIAN SEA) VALID FOR NEXT 120 HOURS ISSUED AT 0600 UTC OF 29.10.2022 BASED ON 0300 UTC OF 29.10.2022.**

**BAY OF BENGAL:**

YESTERDAY'S CYCLONIC CIRCULATION OVER SOUTHWEST BAY OF BENGAL OFF NORTH TAMIL NADU COAST LAY OVER SOUTHWEST BAY OF BENGAL AND ADJOINING SRI LANKA AT 0300 UTC OF TODAY, THE 29<sup>TH</sup> OCTOBER, 2022.

ANOTHER CYCLONIC CIRCULATION LAY OVER SOUTHEAST BAY OF BENGAL & ADJOINING EQUATORIAL NORTH INDIAN OCEAN AT 0300 UTC OF TODAY, THE 29<sup>TH</sup> OCTOBER, 2022.

SCATTERED LOW AND MEDIUM CLOUDS WITH EMBEDDED MODERATE TO INTENSE CONVECTION LAY OVER EASTCENTRAL & SOUTH BAY OF BENGAL AND ANDAMAN SEA.

**PROBABILITY OF CYCLOGENESIS (FORMATION OF DEPRESSION) DURING NEXT 120 HRS:**

24 HOURS	24-48 HOURS	48-72 HOURS	72-96 HOURS	96-120 HOURS
NIL	NIL	NIL	NIL	NIL

**ARABIAN SEA:**

SCATTERED LOW AND MEDIUM CLOUDS OVER CENTRAL & SOUTH ARABIAN SEA.

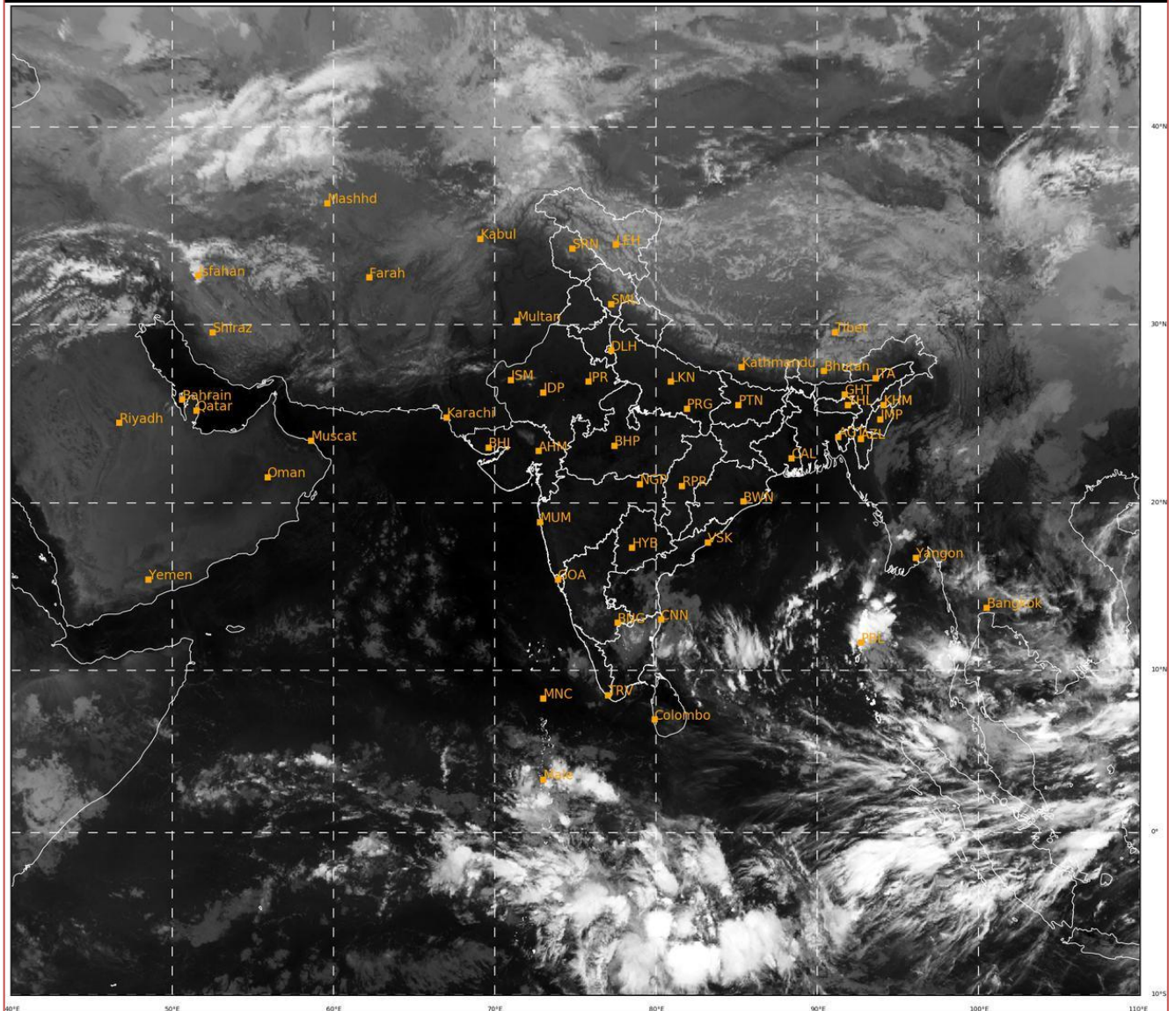
**PROBABILITY OF CYCLOGENESIS (FORMATION OF DEPRESSION) DURING NEXT 120 HRS:**

24 HOURS	24-48 HOURS	48-72 HOURS	72-96 HOURS	96-120 HOURS
NIL	NIL	NIL	NIL	NIL

**REMARKS:** NIL

SAT : INSAT-3D IMG  
 IMG\_TIR1 10.8 um  
 L1C Mercator

29-10-2022/(0300 to 0326) GMT  
 29-10-2022/(0830 to 0856) IST



497

940

IMD, DELHI

Cloud distribution: (a) Isolated: <25%, Scattered:25-50%, Broken: 51-75%, Solid:>75%, Convection Intensity: (a) Weak: Cloud Top Temperature (CTT) >-25°C, (b) Moderate: CTT: - 25°C to -40°C, (c) Intense: CTT: - 41°C to -70°C and (d) Very Intense: : Less than -70°C  
 PROBABILITY OF CYCLOGENESIS (FORMATION OF DEPRESSION): NIL: 0%, LOW: 1-33%, , MODERATE: 34-66% AND HIGH: 67-100%  
 This is a guidance Bulletin for WMO/ESCAP Panel Member countries. Visit respective National websites for Country specific Bulletins