



**REGIONAL SPECIALISED METEOROLOGICAL CENTRE -TROPICAL CYCLONES, NEW DELHI  
TROPICAL WEATHER OUTLOOK**

**DEMS-RSMC TROPICAL CYCLONES NEW DELHI DATED 22.05.2026**

**TROPICAL WEATHER OUTLOOK FOR THE NORTH INDIAN OCEAN (THE BAY OF BENGAL AND THE ARABIAN SEA) VALID FOR THE NEXT 168 HOURS ISSUED AT 0600 UTC OF 22.05.2026 BASED ON 0300 UTC OF 22.05.2026.**

**BAY OF BENGAL:**

An upper air cyclonic circulation formed over Southeast Bay of Bengal & neighbourhood at 3.1 km above mean sea level at 0300 UTC of today, the 22nd May 2026.

Scattered to broken, low to medium clouds with embedded intense to very intense convection lay over the southeast Bay of Bengal, Andaman Sea & Gulf of Martaban and the Tenasserim coast. Scattered low to medium clouds with embedded moderate to intense convection lay over the southwest & central Bay of Bengal and isolated weak to moderate convection lay over north Bay of Bengal.

**\*PROBABILITY OF CYCLOGENESIS (FORMATION OF DEPRESSION) DURING NEXT 168 HRS)**

24 HOURS	24-48 HOURS	48-72 HOURS	72-96 HOURS	96-120 HOURS	120-144 HOURS	144-168 HOURS
NIL	NIL	NIL	NIL	NIL	NIL	NIL

**\*NOTE: EVERY 24HR FORECAST IS VALID UPTO 0300 UTC (0830 IST) OF NEXT DAY**

**ARABIAN SEA:**

An upper air cyclonic circulation formed over eastcentral Arabian Sea & neighbourhood at 1.5 km above mean sea level at 0300 UTC of yesterday, the 21<sup>st</sup> May and persisted over the same region at 0300 UTC of today, the 22<sup>nd</sup> May 2026 .

Another upper air cyclonic circulation formed over southeast Arabian Sea & neighbourhood at 3.1 km above mean sea level at 0300 UTC of today, the 22<sup>nd</sup> May 2026.

Scattered to broken low and medium clouds with embedded intense to very intense convection lay over the central and south Arabian Sea. Scattered low to medium clouds with embedded moderate to intense convection lay over the Lakshadweep Islands, Maldives and the Comorin area.

Cloud distribution: (a) Isolated: <25%, Scattered:25-50%, Broken: 51-75%, Solid:>75%, Convection Intensity: (a) Weak: Cloud Top Temperature(CTT)>-25°C, (b) Moderate: CTT:-25°Cto-40°C, (c) Intense: CTT: -41°Cto -70°C and (d) Very Intense::Less than -70°C Probability of cyclogenesis (formation of depression) :NIL:0%, LOW:1-33%, MODERATE:34-66% and HIGH:67-100%

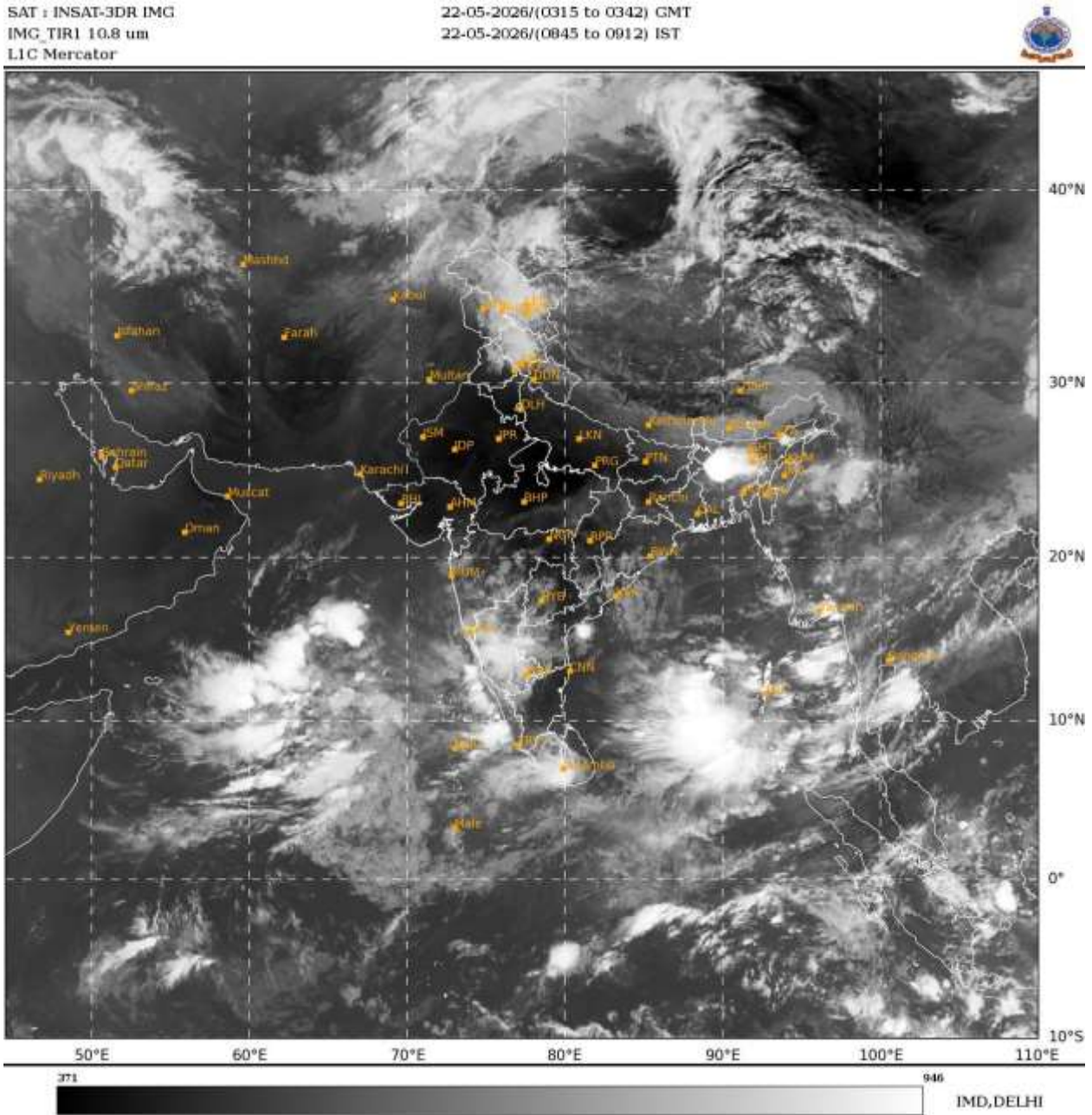
This is a guidance Bulletin for WMO/ESCAP Panel Member countries. Visit respective National websites for Country specific Bulletins.

**\*PROBABILITY OF CYCLOGENESIS (FORMATION OF DEPRESSION) DURING NEXT 168 HRS:**

24 HOURS	24-48 HOURS	48-72 HOURS	72-96 HOURS	96-120 HOURS	120-144 HOURS	144-168 HOURS
NIL	NIL	NIL	NIL	NIL	NIL	NIL

**\*NOTE: EVERY 24HR FORECAST IS VALID UPTO 0300 UTC (0830 IST) OF NEXT DAY**

**REMARKS: NIL**



Cloud distribution: (a) Isolated: <25%, Scattered:25-50%, Broken: 51-75%, Solid:>75%, Convection Intensity: (a) Weak: Cloud Top Temperature(CTT)>-25°C, (b) Moderate: CTT:-25°Cto-40°C, (c) Intense: CTT: -41°Cto -70°C and (d) Very Intense::Less than -70°C Probability of cyclogenesis (formation of depression) :NIL:0%, LOW:1-33%, MODERATE:34-66% and HIGH:67-100%  
 This is a guidance Bulletin for WMO/ESCAP Panel Member countries. Visit respective National websites for Country specific Bulletins.