



**REGIONAL SPECIALISED METEOROLOGICAL CENTRE-TROPICAL CYCLONES, NEW DELHI
TROPICAL WEATHER OUTLOOK**

DEMS-RSMC TROPICAL CYCLONES NEW DELHI DATED 28.07.2021

TROPICAL WEATHER OUTLOOK FOR NORTH INDIAN OCEAN (THE BAY OF BENGAL AND ARABIAN SEA) VALID FOR NEXT 120 HOURS ISSUED AT 0600 UTC OF 28.07.2021 BASED ON 0300 UTC OF 28.07.2021.

BAY OF BENGAL:

YESTERDAY'S, LOW PRESSURE AREA OVER NORTH BAY OF BENGAL (BOB) AND NEIGHBOURHOOD BECAME WELL MARKED LOW PRESSURE AREA OVER SOUTH BANGLADESH AND ADJOINING NORTH BOB & WEST BENGAL IN THE EARLY MORNING (0000 UTC) OF TODAY, THE 28TH JULY 2021. AT 0300UTC OF TODAY, THE 28TH JULY 2021 IT LAY OVER COASTAL BANGLADESH & ADJOINING WEST BENGAL. IT IS LIKELY TO MOVE WESTWARDS ACROSS WEST BENGAL, JHARKHAND AND BIHAR DURING NEXT 48 HOURS.

CONVECTION ASSOCIATED WITH THE ABOVE WELL MARKED LOW PRESSURE AREA IS SEEN AS SCATTERED TO BROKEN LOW AND MEDIUM CLOUDS WITH EMBEDDED INTENSE TO VERY INTENSE CONVECTION OVER SOUTH BANGLADESH, SOUTH GANGETIC WEST BENGAL AND ALSO OVER NORTH BAY OF BENGAL AND NEIGHBOURHOOD. MINIMUM CLOUD TOP TEMPERATURE (CTT) IS MINUS 85 °C.

SCATTERED LOW AND MEDIUM CLOUDS WITH EMBEDDED MODERATE TO INTENSE CONVECTION SEEN OVER WESTCENTRAL BOB AND ANDAMAN SEA. SCATTERED LOW AND MEDIUM CLOUDS WITH EMBEDDED WEAK TO MODERATE CONVECTION PREVAIL OVER REST OF BOB.

PROBABILITY OF CYCLOGENESIS (FORMATION OF DEPRESSION) DURING NEXT 120 HRS):

24 HOURS	24-48 HOURS	48-72 HOURS	72-96 HOURS	96-120 HOURS
NIL	NIL	NIL	NIL	NIL

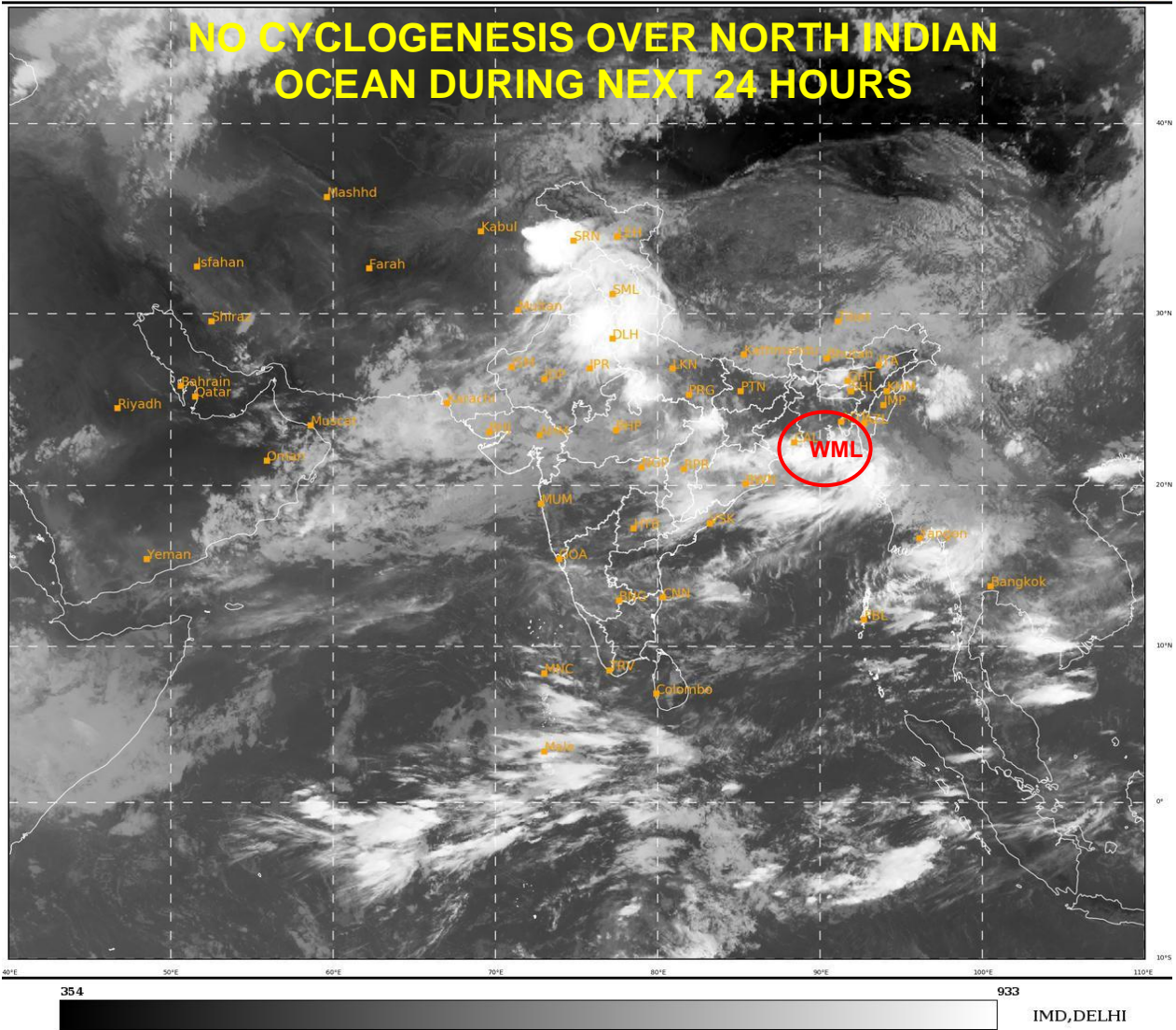
ARABIAN SEA:

SCATTERED LOW AND MEDIUM CLOUDS WITH EMBEDDED MODERATE TO INTENSE CONVECTION OVER WESTCENTRAL ARABIAN SEA AND SOUTHEAST ARABIAN SEA. SCATTERED LOW AND MEDIUM CLOUDS WITH EMBEDDED WEAK TO MODERATE CONVECTION OVER NORTH ARABIAN SEA, EASTCENTRAL ARABIAN SEA AND COMORIN REGION.

PROBABILITY OF CYCLOGENESIS (FORMATION OF DEPRESSION) DURING NEXT 120 HRS):

24 HOURS	24-48 HOURS	48-72 HOURS	72-96 HOURS	96-120 HOURS
NIL	NIL	NIL	NIL	NIL

REMARKS: NIL



- **WML STANDS FOR WELL MARKED LOW PRESSURE AREA**