



**REGIONAL SPECIALISED METEOROLOGICAL CENTRE -TROPICAL CYCLONES, NEW DELHI
TROPICAL WEATHER OUTLOOK**

DEMS-RSMC TROPICAL CYCLONES NEW DELHI DATED 23.06.2026

TROPICAL WEATHER OUTLOOK FOR THE NORTH INDIAN OCEAN (THE BAY OF BENGAL AND THE ARABIAN SEA) VALID FOR THE NEXT 168 HOURS ISSUED AT 0600 UTC OF 23.06.2026 BASED ON 0300 UTC OF 23.06.2026.

BAY OF BENGAL:

Yesterday's upper air cyclonic circulation over central parts of North & adjoining Central Bay of Bengal persists over same region and now lies between 4.5 & 5.8 km above mean sea level at 0300 UTC of 23rd June, 2026.

Scattered to broken low and medium clouds with embedded intense to very intense convection lay over north adjoining westcentral Bay of Bengal and Arakan Coast. Scattered low and medium clouds with embedded moderate to intense convection lay over the rest of the Bay of Bengal, Andaman Sea, Gulf of Martaban, and Tenasserim Coast.

***PROBABILITY OF CYCLOGENESIS (FORMATION OF DEPRESSION) DURING NEXT 168 HRS)**

24 HOURS	24-48 HOURS	48-72 HOURS	72-96 HOURS	96-120 HOURS	120-144 HOURS	144-168 HOURS
NIL	NIL	NIL	NIL	NIL	NIL	NIL

***NOTE: EVERY 24HR FORECAST IS VALID UPTO 0300 UTC (0830 IST) OF NEXT DAY**

ARABIAN SEA:

An upper air cyclonic circulation lies over Lakshadweep area & neighbourhood at 5.8 km above mean sea level at 0300 UTC of 23rd June, 2026.

Scattered to broken low and medium clouds with embedded intense to very intense convection lay over Gulf of Cambay, eastcentral and southeast Arabian Sea, Lakshadweep Islands area, Maldives area, and Comorin area. Scattered low and medium clouds with embedded isolated weak to moderate convection lay over the rest of the Arabian Sea.

***PROBABILITY OF CYCLOGENESIS (FORMATION OF DEPRESSION) DURING NEXT 168 HRS:**

24 HOURS	24-48 HOURS	48-72 HOURS	72-96 HOURS	96-120 HOURS	120-144 HOURS	144-168 HOURS
NIL	NIL	NIL	NIL	NIL	NIL	NIL

***NOTE: EVERY 24HR FORECAST IS VALID UPTO 0300 UTC (0830 IST) OF NEXT DAY**

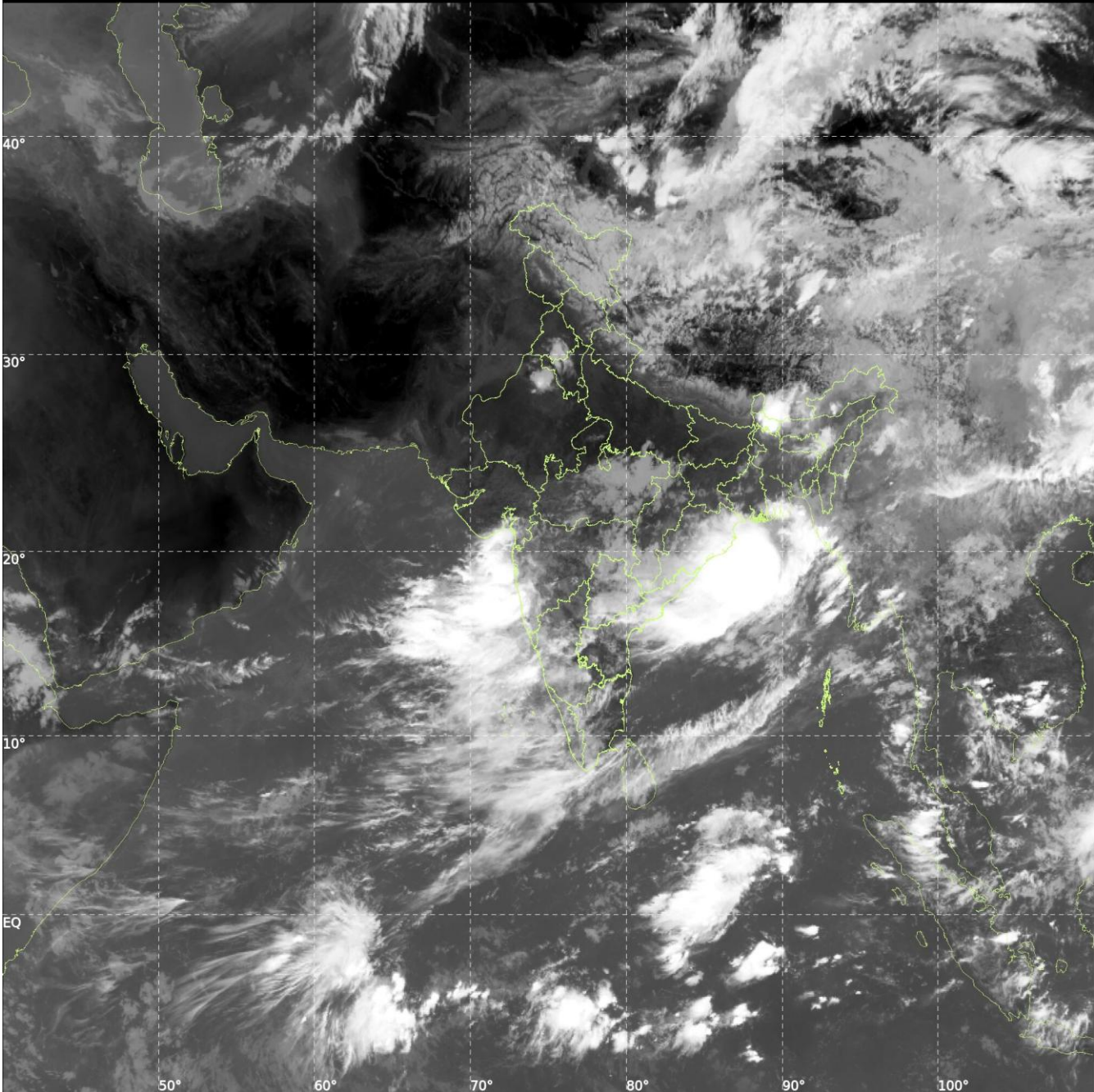
REMARKS: NIL



INSAT-3DS IMG, Thermal Infrared1 Count @ 10.83 μm
GMT:23-06-2026/(0500-0527) IST:23-06-2026/(1030-1057)
L1C MERCATOR (LINEAR STRETCH: 1%)

342

906



Cloud distribution: (a) Isolated: <25%, Scattered:25-50%, Broken: 51-75%, Solid:>75%, Convection Intensity: (a) Weak: Cloud Top Temperature(CTT)>-25°C, (b) Moderate: CTT:-25°Cto-40°C, (c) Intense: CTT: -41°Cto -70°C and (d) Very Intense::Less than -70°C Probability of cyclogenesis (formation of depression) :NIL:0%, LOW:1-33%, MODERATE:34-66% and HIGH:67-100%
This is a guidance Bulletin for WMO/ESCAP Panel Member countries. Visit respective National websites for Country specific Bulletins.

