



**REGIONAL SPECIALISED METEOROLOGICAL CENTRE-TROPICAL CYCLONES, NEW DELHI  
TROPICAL WEATHER OUTLOOK**

---

**DEMS-RSMC TROPICAL CYCLONES NEW DELHI DATED 10.09.2021**

**TROPICAL WEATHER OUTLOOK FOR NORTH INDIAN OCEAN (THE BAY OF BENGAL OF BENGAL OF BENGAL AND ARABIAN SEA) VALID FOR NEXT 120 HOURS ISSUED AT 0600 UTC OF 10.09.2021 BASED ON 0300 UTC OF 10.09.2021.**

**BAY OF BENGAL:**

A LOW PRESSURE AREA IS VERY LIKELY TO FORM OVER CENTRAL PARTS OF BAY OF BENGAL DURING NEXT 24 HOURS. IT IS VERY LIKELY TO MOVE WEST NORTHWESTWARDS AND CONCENTRATE INTO A DEPRESSION DURING THE SUBSEQUENT 48 HOURS.

SCATTERED TO BROKEN LOW MEDIUM CLOUDS WITH EMBEDDED INTENSE TO VERY INTENSE CONVECTION LAY OVER BAY OF BENGAL & ANDAMAN SEA.

**PROBABILITY OF CYCLOGENESIS (FORMATION OF DEPRESSION) DURING NEXT 120 HRS:**

24 HOURS	24-48 HOURS	48-72 HOURS	72-96 HOURS	96-120 HOURS
NIL	LOW	MODERATE	HIGH	HIGH

**ARABIAN SEA:**

SCATTERED LOW AND MEDIUM CLOUDS WITH EMBEDDED MODERATE TO INTENSE CONVECTION LAY OVER GULF OF KUTCH NORTH CENTRAL PARTS OF CENTRAL ARABIAN SEA EXT SOUTH WEST ARABIAN SEA. SCATTERED LOW AND MEDIUM CLOUDS WITH EMBEDDED WEAK TO MODERATE CONVECTION LAY OVER NORTH ARABIAN SEA WEST CENTRAL ARABIAN SEA.

**PROBABILITY OF CYCLOGENESIS (FORMATION OF DEPRESSION) DURING NEXT 120 HRS:**

24 HOURS	24-48 HOURS	48-72 HOURS	72-96 HOURS	96-120 HOURS
NIL	NIL	NIL	NIL	NIL

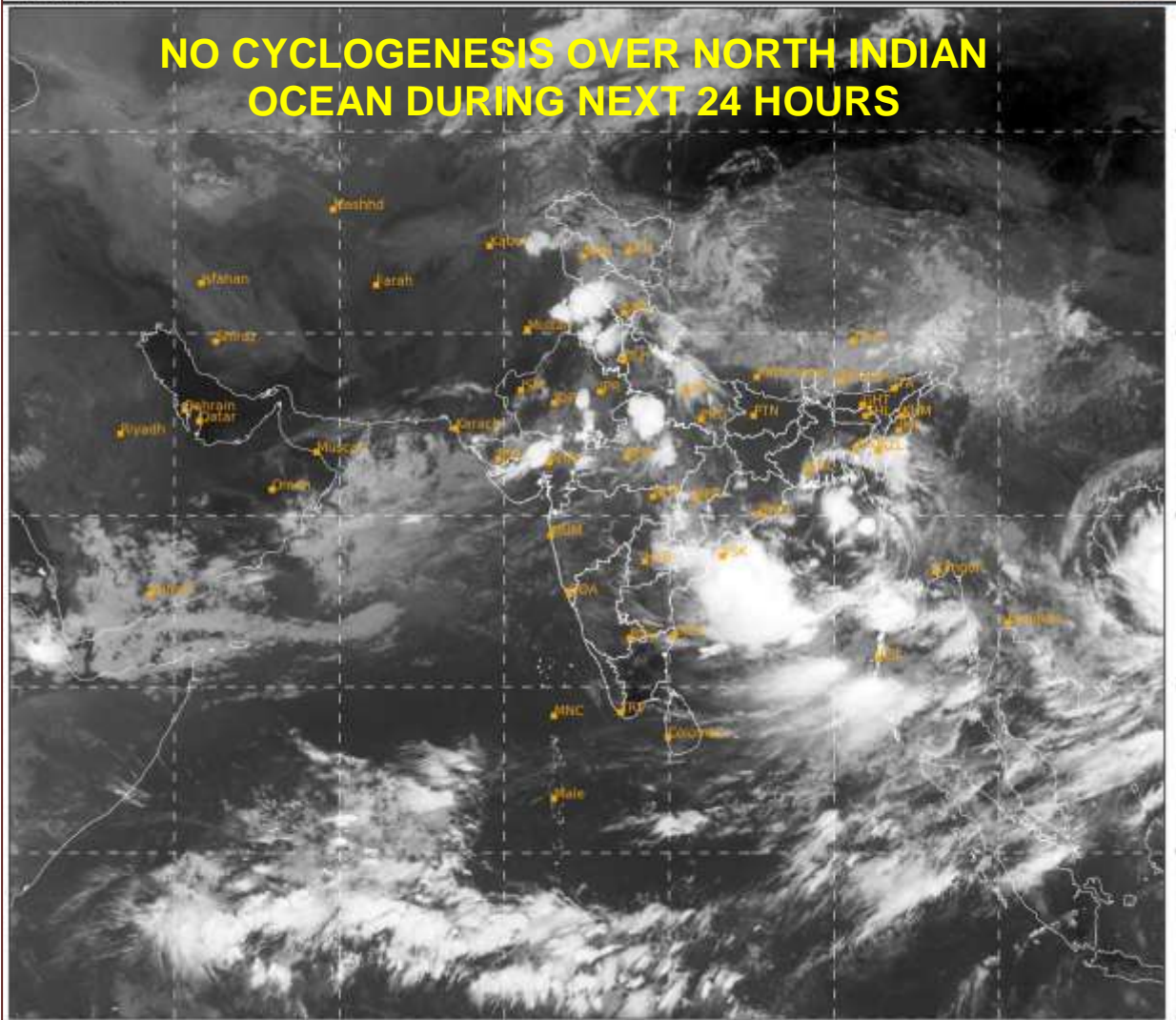
**REMARKS:** CONSIDERING THE SEA CONDITIONS, SST IS AROUND 29-30°C OVER CENTRAL & NORTH BAY OF BENGAL (BOB). THE TROPICAL CYCLONE HEAT POTENTIAL IS ABOUT 80-100 KJ/CM<sup>2</sup> OVER CENTRAL & NORTH BOB AND >100 KJ/CM<sup>2</sup> OVER NORTHWEST BOB. LOWER LEVEL POSITIVE RELATIVE VORTICITY (80-100X10<sup>-6</sup>S<sup>-1</sup>) PREVAIL OVER CENTRAL BOB WITH EXTENSION UPTO 500 HPA LEVEL. TWO ZONES OF POSITIVE UPPER LEVEL DIVERGENCE (30X10<sup>-5</sup>S<sup>-1</sup>) IS SEEN OVER EAST & WEST CENTRAL BOB AND ANOTHER ZONE OF POSITIVE VORTICITY (5X10<sup>-5</sup>S<sup>-1</sup>) IS SEEN OVER NORTHEAST BOB. POSITIVE LOWER LEVEL CONVERGENCE 30 X 10<sup>-5</sup>S<sup>-1</sup> LAY OVER EASTCENTRAL BOB AND 5-15 X 10<sup>-5</sup>S<sup>-1</sup> LAY OVER WESTCENTRAL & ADJOINING NORTHWEST BOB. THE VERTICAL WIND SHEAR (VWS) IS LOW TO MODERATE (05-15 KTS) OVER THE REGION. MOST OF THE NWP MODELS LIKE ECMWF, IMD GFS, NCEP GFS, GEFS, NCUM AND NEPS ARE INDICATING DEVELOPMENT OF A LOW PRESSURE AREA OVER CENTRAL PARTS OF BOB DURING NEXT 24 HOURS. MODELS ARE ALSO INDICATING IT'S INTENSIFICATION INTO DEPRESSION DURING SUBSEQUENT 48 HOURS. THE EXISTING ENVIRONMENTAL CONDITIONS AND MODEL GUIDANCE INDICATE MODERATE TO HIGH PROBABILITY OF CYCLOGENESIS OVER THE BOB DURING NEXT 48-72 HOURS.

SAT : INSAT-3D IMG  
IMG\_TIR1 10.8 um  
LIC Mercator

10-09-2021/(0300 to 0326) GMT  
10-09-2021/(0830 to 0856) IST



## NO CYCLOGENESIS OVER NORTH INDIAN OCEAN DURING NEXT 24 HOURS



400

800

IMD, DELHI