



**REGIONAL SPECIALISED METEOROLOGICAL CENTRE-TROPICAL CYCLONES, NEW DELHI
TROPICAL WEATHER OUTLOOK**

DEMS-RSMC TROPICAL CYCLONES NEW DELHI DATED 19.07.2023

TROPICAL WEATHER OUTLOOK FOR NORTH INDIAN OCEAN (THE BAY OF BENGAL AND THE ARABIAN SEA) VALID FOR NEXT 168 HOURS ISSUED AT 0600 UTC OF 19.07.2023 BASED ON 0300 UTC OF 19.07.2023.

BAY OF BENGAL:

YESTERDAY'S CYCLONIC CIRCULATION OVER NORTHWEST BAY OF BENGAL & ADJOINING COASTAL ODISHA NOW LIES OVER NORTHWEST ADJOINING WESTCENTRAL BAY OF BENGAL AND ADJOINING AREAS OF NORTH ANDHRA PRADESH-SOUTH ODISHA COASTS EXTENDING UPTO 7.6 KM ABOVE MEAN SEA LEVEL TILTING SOUTHWARDS WITH HEIGHT. UNDER ITS INFLUENCE, A LOW PRESSURE AREA IS LIKELY TO FORM OVER NORTHWEST BAY OF BENGAL DURING NEXT 24 HOURS.

SCATTERED TO BROKEN LOW AND MEDIUM CLOUDS WITH EMBEDDED INTENSE TO VERY INTENSE CONVECTION LAY OVER NORTH & CENTRAL BAY OF BENGAL AND NORTH ANDAMAN SEA. SCATTERED LOW AND MEDIUM CLOUDS WITH EMBEDDED MODERATE TO INTENSE CONVECTION LAY OVER SOUTHEAST BAY OF BENGAL, SOUTH ANADAMAN SEA AND GULF OF MARTABAN.

PROBABILITY OF CYCLOGENESIS (FORMATION OF DEPRESSION) DURING NEXT 168 HRS:

24 HOURS	24-48 HOURS	48-72 HOURS	72-96 HOURS	96-120 HOURS	120-144 HOURS	144-168 HOURS
NIL	NIL	LOW	LOW	NIL	NIL	LOW

ARABIAN SEA:

SCATTERED TO BROKEN LOW AND MEDIUM CLOUDS WITH EMBEDDED INTENSE TO VERY INTENSE CONVECTION LAY OVER NORTHEAST & EASTCENTRAL ARABIAN SEA, GULF OF KUTCH AND GULF OF CAMBAY. SCATTERED LOW AND MEDIUM CLOUDS WITH EMBEDDED ISOLATED MODERATE TO INTENSE CONVECTION LAY OVER SOUTHEAST ARABIAN SEA AND LAKSHADWEEP ISLAND AREA.

PROBABILITY OF CYCLOGENESIS (FORMATION OF DEPRESSION) DURING NEXT 168 HRS:

24 HOURS	24-48 HOURS	48-72 HOURS	72-96 HOURS	96-120 HOURS	120-144 HOURS	144-168 HOURS
NIL	NIL	NIL	NIL	NIL	NIL	NIL

REMARKS:

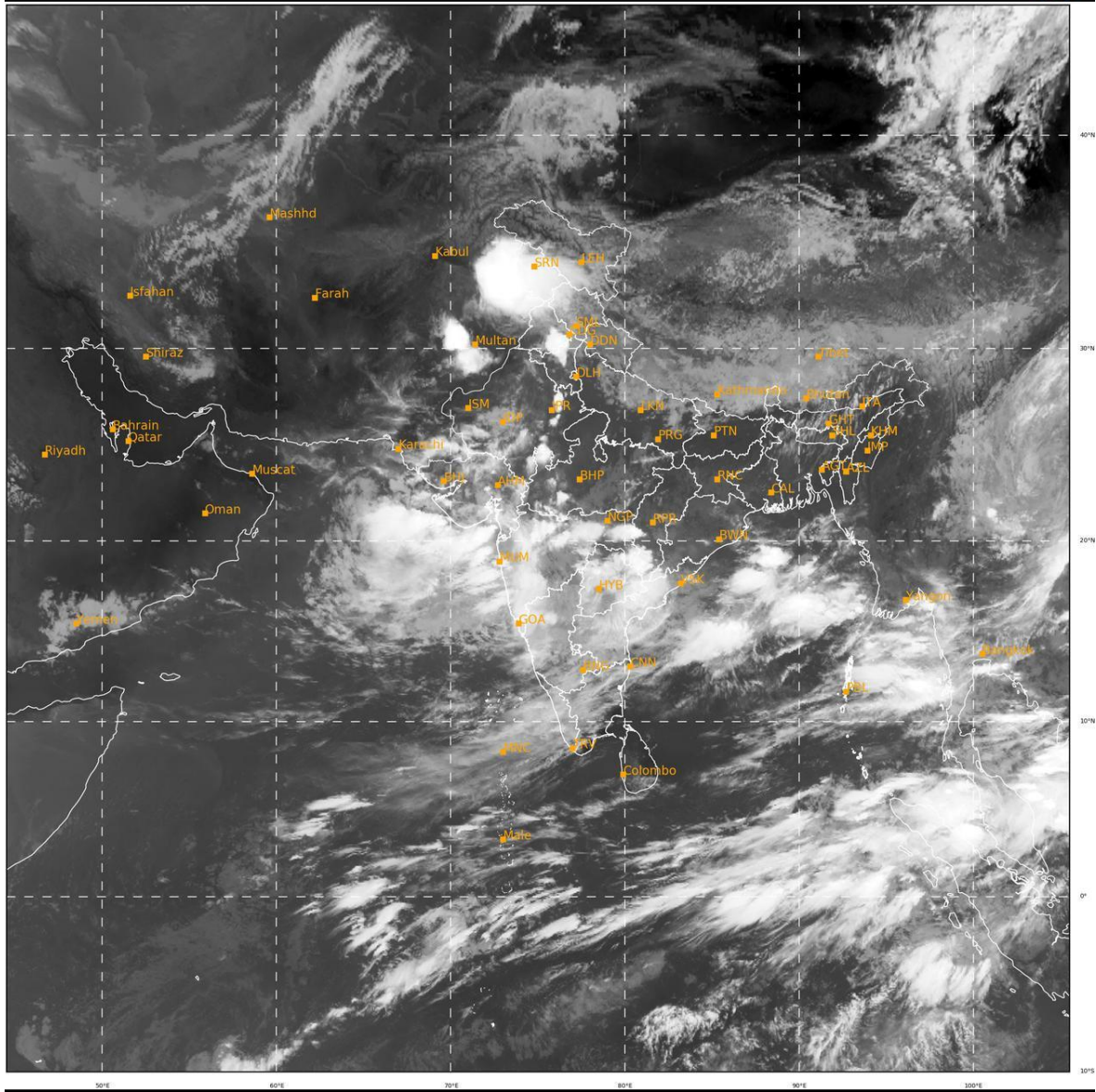
MODEL GUIDANCE FOR BAY OF BENGAL (BOB):

Cloud distribution: (a) Isolated: <25%, Scattered:25-50%, Broken: 51-75%, Solid:>75%, Convection Intensity: (a) Weak: Cloud Top Temperature (CTT) >-25°C, (b) Moderate: CTT: - 25°C to -40°C, (c) Intense: CTT: - 41°C to -70°C and (d) Very Intense: : Less than -70°C
PROBABILITY OF CYCLOGENESIS (FORMATION OF DEPRESSION):NIL: 0%, LOW: 1-33%, , MODERATE: 34-66% AND HIGH: 67-100%
This is a guidance Bulletin for WMO/ESCAP Panel Member countries. Visit respective National websites for Country specific Bulletins

VARIOUS DETERMINISTIC MODELS INCLUDING ECMWF, IMD GFS, NCUM, NEPS AND GEFS ARE INDICATING A CYCLONIC CIRCULATION NORTHWEST AND ADJOINING WESTCENTRAL BOB AND ADJOINING SOUTH ODISHA & NORTH ANDHRA PRADESH. UNDER IT'S INFLUENCE, A LOW PRESSURE AREA IS LIKELY TO FORM OVER NORTHWEST BOB & ADJOINING AREAS WITHIN 24 HOURS AND FURTHER PERSIST DURING 21ST-22ND JULY. ECMWF, NCUM AND NEPS MODELS ARE SHOWING LOW PRESSURE SYSTEM OVER THE REGION AND ITS LIKELY WEST-NORTHWESTWARD MOVEMENT ACROSS ODISHA COAST. BUT IMD GFS AND NCEP GFS ARE NOT SHOWING ANY OBVIOUS MOVEMENT OF THE LOW PRESSURE AREA. THERE IS ALSO VARIATION AMONG MODELS WITH RESPECT TO LOCATION AND TIME OF FORMATION OF LOW OVER NORTHWEST BOB. IMD GFS, ECMWF, NCUM AND NEPS MODELS ARE SHOWING THE FORMATION ANOTHER FRESH LOW PRESSURE AREA OVER NORTHWEST & ADJOINING WESTCENTRAL BOB OFF SOUTH ODISHA AND NORTH ANDHRA PRADESH COASTS AROUND 24TH JULY.

IN VIEW OF THE AVAILABLE MODEL GUIDANCE AND ENVIRONMENTAL FEATURES, IT IS INFERRED THAT UNDER THE INFLUENCE OF THE EXISTING CYCLONIC CIRCULATION OVER NORTHWEST ADJOINING WESTCENTRAL BOB, A LOW PRESSURE AREA IS LIKELY TO FORM OVER NORTHWEST BOB DURING NEXT 24 HOURS. SUBSEQUENTLY, THE SYSTEM IS LIKELY TO MOVE WEST-NORTHWESTWARDS ACROSS ODISHA COAST DURING 21ST-22ND JULY AND THERE IS A LOW PROBABILITY OF IT'S INTENSIFICATION INTO A DEPRESSION. THERE IS ALSO A LOW PROBABILITY FOR THE FORMATION OF A FRESH LOW PRESSURE SYSTEM OVER NORTHWEST AND ADJOINING WESTCENTRAL BOB AND COASTAL AREAS OF SOUTH ODISHA AND NORTH ANDRA PRADESH AROUND 24TH JULY.

Legends: IMD GFS: India Meteorological Department Global Forecast System, NCUM: National Centre for Medium Range Weather Forecasting Centre (NCMRWF) Unified Model, European Centre for Medium Range Weather Forecasting, GPP: Genesis Potential Parameter, National Centre for Environment Prediction GFS, ECMM: ECMWF multi model, GEFS: GFS ensemble, NEPS: NCUM ensemble prediction system, CNCUM: Coupled NCUM, CPC: Climate Prediction Center, NWS: National Weather Service)



Cloud distribution: (a) Isolated: <25%, Scattered:25-50%, Broken: 51-75%, Solid:>75%, Convection Intensity: (a) Weak: Cloud Top Temperature (CTT) >-25°C, (b) Moderate: CTT: - 25°C to -40°C, (c) Intense: CTT: - 41°C to -70°C and (d) Very Intense: : Less than -70°C
PROBABILITY OF CYCLOGENESIS (FORMATION OF DEPRESSION):NIL: 0%, LOW: 1-33%, , MODERATE: 34-66% AND HIGH: 67-100%
This is a guidance Bulletin for WMO/ESCAP Panel Member countries. Visit respective National websites for Country specific Bulletins