



**REGIONAL SPECIALISED METEOROLOGICAL CENTRE -TROPICAL CYCLONES, NEW DELHI
SPECIAL TROPICAL WEATHER OUTLOOK**

DEMS-RSMC TROPICAL CYCLONES NEW DELHI DATED 03.12.2025

SPECIAL TROPICAL WEATHER OUTLOOK FOR THE NORTH INDIAN OCEAN (THE BAY OF BENGAL AND THE ARABIAN SEA) VALID FOR THE NEXT 168 HOURS ISSUED AT 0330 UTC OF 03.12.2025 BASED ON 0000 UTC OF 03.12.2025.

Sub: Depression (Remnant of Cyclonic Storm Ditwah) weakened into a Well-Marked low pressure area over North Tamil Nadu-Puducherry coasts and neighborhood

The Depression (Remnant of Cyclonic Storm Ditwah) over southwest Bay of Bengal and adjoining North Tamil Nadu- Puducherry coasts moved slowly southwestwards and weakened into a Well-Marked Low Pressure area over North Tamil Nadu-Puducherry coasts and neighbourhood at 0000 UTC of today, the 03rd December 2025.

It is very likely to continue to move southwestwards slowly across north coastal Tamil Nadu and Puducherry and weaken further into a low-pressure area during next 24 hours.

The associated maximum sustained wind speed is about 15 knots gusting up to 25 knots.

Sea condition is rough to moderate over southwest & adjoining west central Bay of Bengal and along & off North Tamil Nadu-Puducherry & South Andhra Pradesh coasts.

THIS IS THE LAST SPECIAL TROPICAL WEATHER OUTLOOK, HOWEVER REGULAR TROPICAL WEATHER OUTLOOK WOULD CONTINUE FROM REGIONAL SPECIALIZED METEOROLOGICAL CENTRE NEW DELHI.

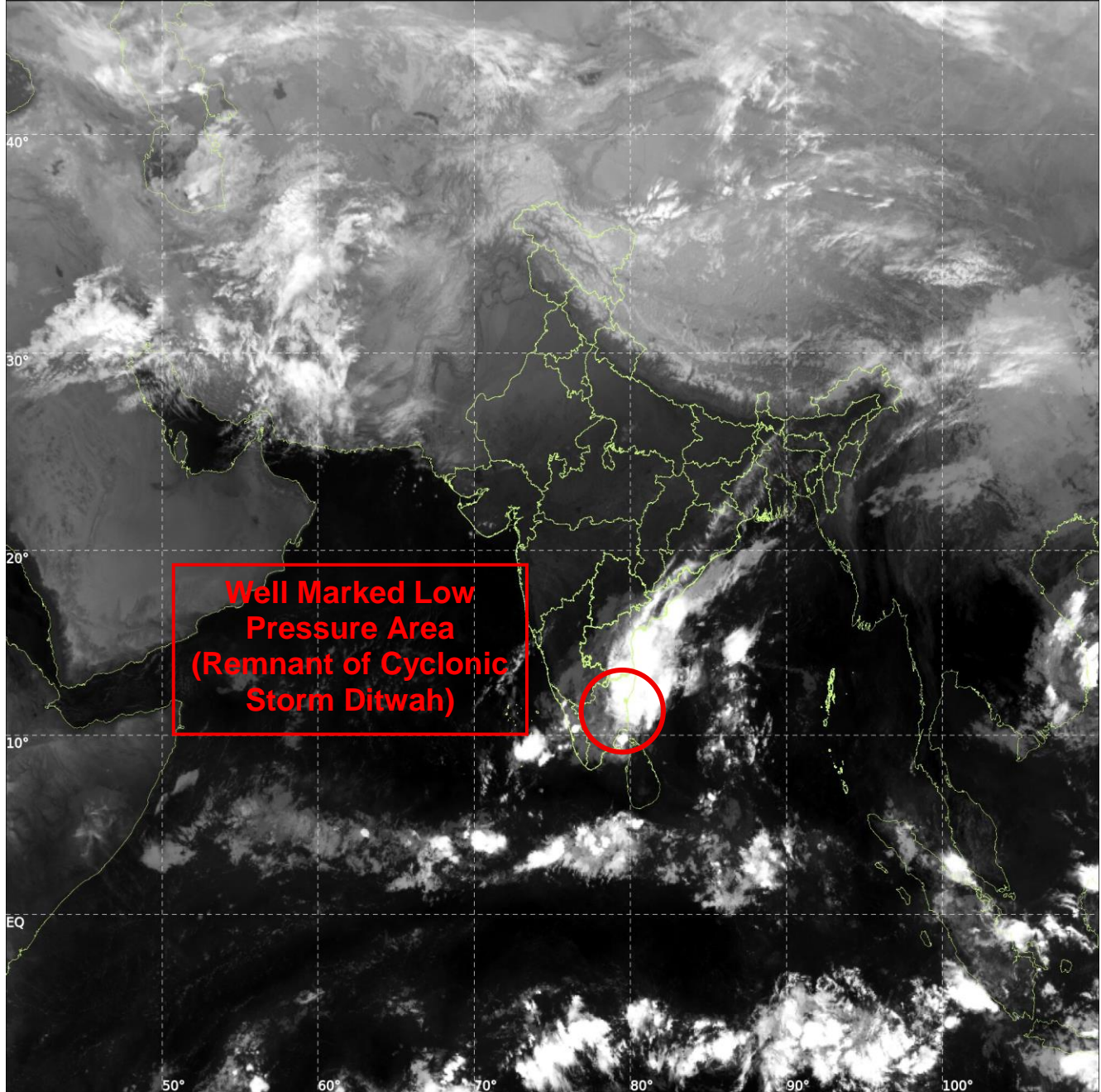
Shibin Balakrishnan
Scientist-D
RSMC



INSAT-3DS IMG, Thermal Infrared1 Count @ 10.83 μm
GMT:03-12-2025/(0300-0327) IST:03-12-2025/(0830-0857)
L1C MERCATOR (LINEAR STRETCH: 1%)

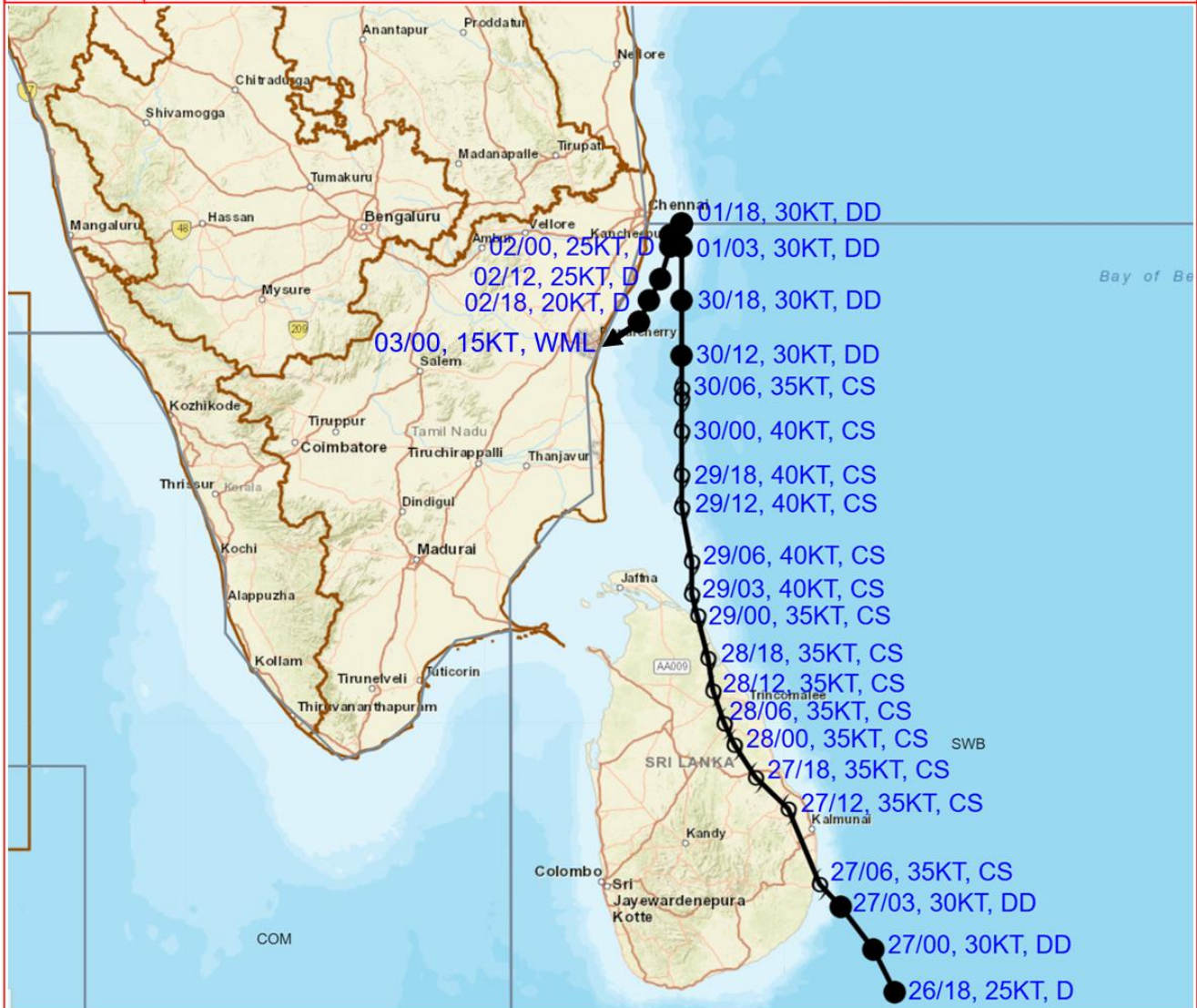
495

862





OBSERVED TRACK OF CYCLONIC STORM "DITWAH" OVER SOUTHWEST BAY OF BENGAL DURING 26TH NOVEMBER TO 03RD DECEMBER 2025



DATE/TIME IN UTC

IST=UTC + 0530

L: LOW PRESSURE AREA

WML: WELL MARKED LOW PRESSURE AREA

D: DEPRESSION (17-27 KT)

DD: DEEP DEPRESSION (28-33 KT)

CS: CYCLONIC STORM (34-47 KT)

SCS: SEVERE CYCLONIC STORM (48-63KT)

VSCS: VERY SEVERE CYCLONIC STORM (64-89 KT)

ESCS: EXTREMELY SEVERE CYCLONIC STORM (90-119 KT)

SuCS: SUPER CYCLONIC STORM \geq 120 KT)

● LESS THAN 34 KT

○ 34-47 KT

○ \geq 48 KT

— OBSERVED TRACK

— FORECAST TRACK

▲ CONE OF UNCERTAINTY

Fishermen Warning Graphics

