



**REGIONAL SPECIALISED METEOROLOGICAL CENTRE-TROPICAL CYCLONES, NEW DELHI
TROPICAL WEATHER OUTLOOK**

DEMS-RSMC SPECIAL TROPICAL CYCLONES NEW DELHI DATED 27.02.2022

TROPICAL WEATHER OUTLOOK FOR NORTH INDIAN OCEAN (THE BAY OF BENGAL AND ARABIAN SEA) VALID FOR NEXT 120 HOURS ISSUED AT 0600 UTC OF 27.02.2022 BASED ON 0300 UTC OF 27.02.2022.

BAY OF BENGAL:

A CYCLONIC CIRCULATION LAY OVER STRAIT OF MALACCA & ADJOINING SOUTH ANDAMAN SEA WITH VERTICAL EXTENSION UPTO 5.8 KM ABOVE MEAN SEA LEVEL AT 0300 UTC OF TODAY, THE 27TH FEBRUARY, 2022. IT IS LIKELY TO MOVE WEST-NORTHWESTWARDS AND CONCENTRATE INTO A LOW PRESSURE AREA OVER SOUTHEAST BAY OF BENGAL DURING NEXT 48 HOURS. IT IS LIKELY TO MOVE FURTHER TOWARDS SRI LANKA COAST DURING SUBSEQUENT 48 HOURS.

SCATTERED TO BROKEN LOW AND MEDIUM CLOUDS WITH EMBEDDED INTENSE TO VERY INTENSE CONVECTION LAY OVER SOUTHEAST BAY OF BENGAL SOUTH OF LATITUDE 10.0°N, SOUTH ANDAMAN SEA AND STRAIT OF MALACCA (MINIMUM CLOUD TOP TEMPERATURE MINUS 75°C).

PROBABILITY OF CYCLOGENESIS (FORMATION OF DEPRESSION) DURING NEXT 120 HRS:

24 HOURS	24-48 HOURS	48-72 HOURS	72-96 HOURS	96-120 HOURS
NIL	NIL	NIL	NIL	NIL

ARABIAN SEA:

SCATTERED LOW AND MEDIUM CLOUDS WITH EMBEDDED MODERATE TO INTENSE CONVECTION LAY OVER SOUTH COMORIN AREA.

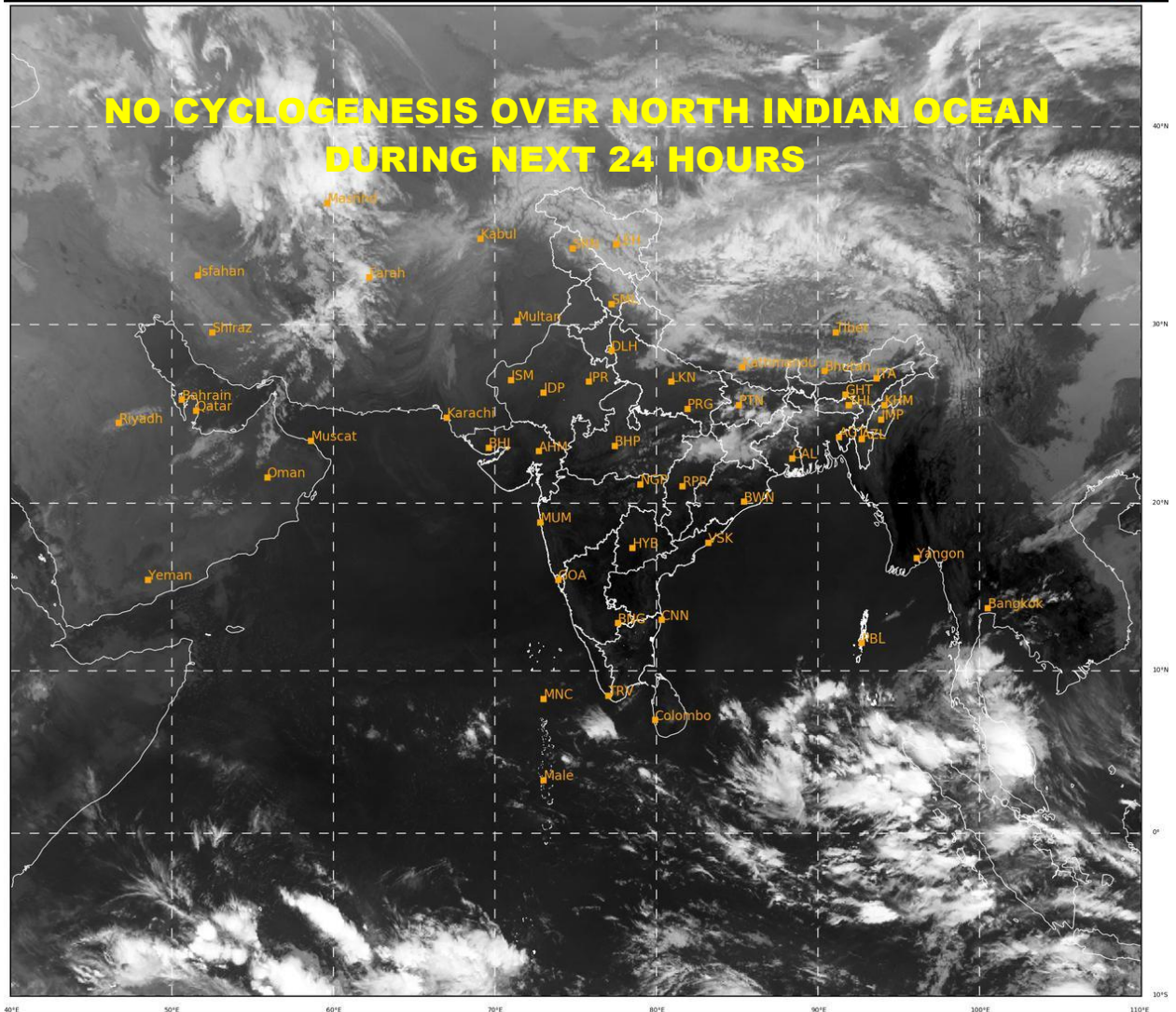
PROBABILITY OF CYCLOGENESIS (FORMATION OF DEPRESSION) DURING NEXT 120 HRS:

24 HOURS	24-48 HOURS	48-72 HOURS	72-96 HOURS	96-120 HOURS
NIL	NIL	NIL	NIL	NIL

REMARKS: NIL

SAT : INSAT-3D IMG
IMG_TIR1 10.8 um
LIC Mercator

27-02-2022/(0330 to 0357) GMT
27-02-2022/(0900 to 0927) IST



449

930

IMD, DELHI