



**REGIONAL SPECIALISED METEOROLOGICAL CENTRE-TROPICAL CYCLONES, NEW DELHI  
TROPICAL WEATHER OUTLOOK**

**DEMS-RSMC TROPICAL CYCLONES NEW DELHI DATED 04.06.2023**

**TROPICAL WEATHER OUTLOOK FOR NORTH INDIAN OCEAN (THE BAY OF BENGAL AND THE ARABIAN SEA) VALID FOR NEXT 120 HOURS ISSUED AT 0600 UTC OF 04.06.2023 BASED ON 0300 UTC OF 04.06.2023.**

**BAY OF BENGAL:**

YESTERDAY'S CYCLONIC CIRCULATION OVER EASTCENTRAL BAY OF BENGAL OFF MYANMAR COAST PERSISTED OVER THE SAME REGION AT 0300 UTC OF TODAY, THE 4<sup>TH</sup> JUNE 2023.

SCATTERED TO BROKEN LOW AND MEDIUM CLOUDS WITH EMBEDDED INTENSE TO VERY INTENSE CONVECTION LAY OVER SOUTHEAST & EASTCENTRAL BAY OF BENGAL, NORTH ANDAMAN SEA (MINIMUM CLOUD TOP TEMPERATURE (CTT) MINUS 90<sup>0</sup>C). SCATTERED LOW AND MEDIUM CLOUDS WITH EMBEDDED MODERATE TO INTENSE CONVECTION LAY OVER SOUTHWEST BAY OF BENGAL, ANDAMAN SEA AND GULF OF MARTABAN.

**PROBABILITY OF CYCLOGENESIS (FORMATION OF DEPRESSION) DURING NEXT 120 HRS:**

24 HOURS	24-48 HOURS	48-72 HOURS	72-96 HOURS	96-120 HOURS
NIL	NIL	NIL	NIL	NIL

**ARABIAN SEA:**

A CYCLONIC CIRCULATION IS LIKELY TO DEVELOP OVER SOUTHEAST ARABIAN SEA AROUND 5<sup>TH</sup> JUNE. UNDER IT'S INFLUENCE, A LOW PRESSURE AREA IS LIKELY TO FORM OVER THE SAME REGION DURING SUBSEQUENT 48 HOURS.

SCATTERED TO BROKEN LOW AND MEDIUM CLOUDS WITH EMBEDDED INTENSE TO VERY INTENSE CONVECTION LAY OVER SOUTH ADJOINING CENTRAL ARABIAN SEA & LAKSHADWEEP ISLANDS AREA (MINIMUM CTT MINUS 93<sup>0</sup>C).

**PROBABILITY OF CYCLOGENESIS (FORMATION OF DEPRESSION) DURING NEXT 120 HRS:**

24 HOURS	24-48 HOURS	48-72 HOURS	72-96 HOURS	96-120 HOURS
NIL	NIL	NIL	LOW	LOW

**Remarks**

**(A) BAY OF BENGAL:**

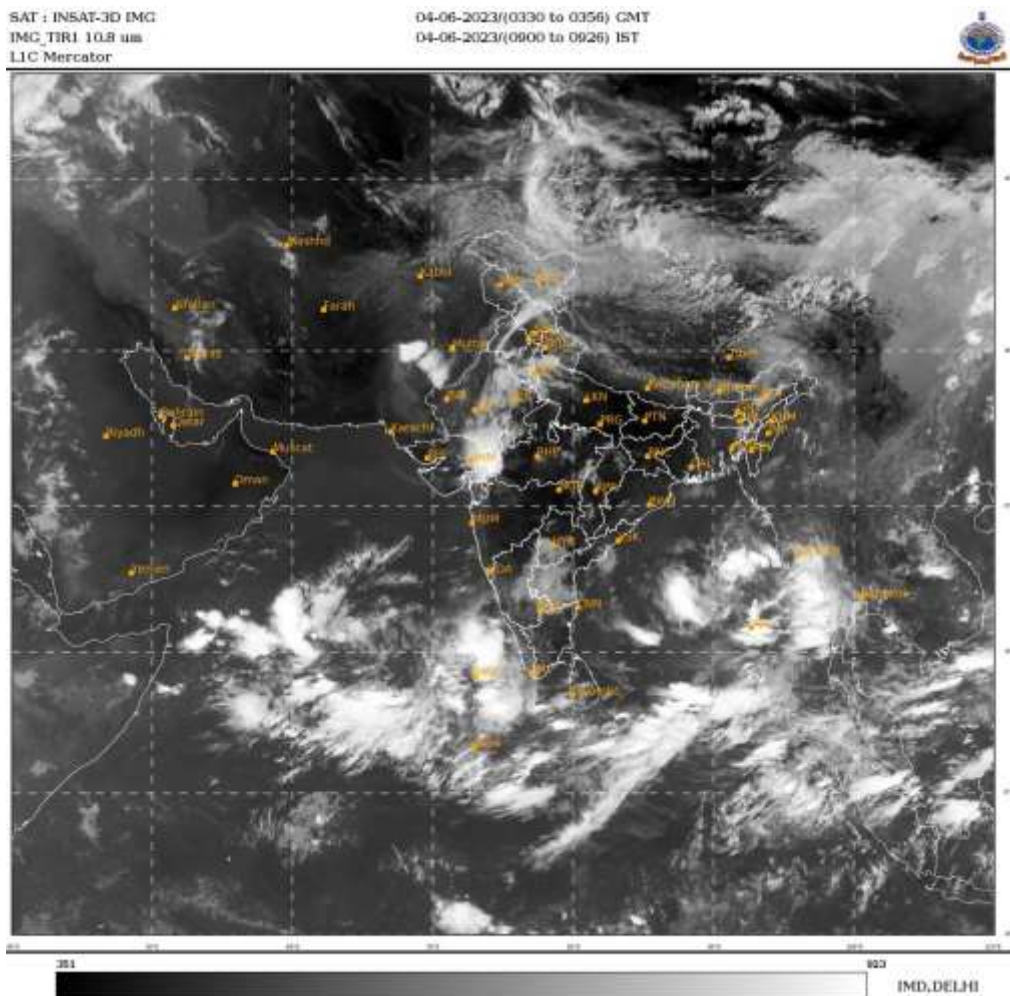
ONLY NCM IS INDICATING DEVELOPMENT OF A DEPRESSION OVER MYANMAR AROUND 8<sup>TH</sup> JUNE WITH VERY SLOW NORTH-NORTHEASTWARDS MOVEMENT ALONG MYANMAR COAST. OTHER MODELS LIKE GFS GROUP AND ECMWF ARE NOT INDICATING ANY SYSTEM OVER BAY OF BENGAL. CONSIDERING GUIDANCE FROM

VARIOUS MODELS, PROBABILITY OF CYCLOGENESIS IS KEPT AS NIL FOR NEXT FIVE DAYS.

**(B) ARABIAN SEA:**

ECMWF AND NCEP GFS ARE INDICATING DEVELOPMENT OF DEPRESSION AROUND 8<sup>TH</sup> JUNE, NCEP AROUND 10<sup>TH</sup> & IMD GFS AROUND 12<sup>TH</sup>. THERE IS LARGE VARIATION AMONG VARIOUS MODELS WRT AREA OF GENESIS AND MOVEMENT OF THE SYSTEM. ECMWF AND NCEP GFS ARE INDICATING GENESIS OVER SOUTHEAST & ADJOINING EASTCENTRAL AS WITH NORTH-NORTHWESTWARDS MOVEMENT. NCEP IS INDICATING GENESIS OVER WESTCENTRAL AS CLOSE TO YEMEN-OMAN COASTS AND CROSSING OVER OMAN. IMD GFS IS INDICATING GENESIS OVER SOUTHEAST AS VERY CLOSE TO KERALA COAST AND NORTHWARDS MOVEMENT TOWARDS NORTH KARNATAKA. CONSIDERING GUIDANCE FROM VARIOUS MODELS, PROBABILITY OF CYCLOGENESIS IS KEPT AS LOW ON DAY-4 & DAY-5 DURING 7<sup>TH</sup>-9<sup>TH</sup> JUNE.

BOTH THE BASINS ARE UNDER CONTINUOUS WATCH. NEXT UPDATE WILL BE ISSUED AT 0600 UTC OF 5<sup>TH</sup> JUNE.



Cloud distribution: (a) Isolated: <25%, Scattered: 25-50%, Broken: 51-75%, Solid: >75%, Convection Intensity: (a) Weak: Cloud Top Temperature (CTT) >-25°C, (b) Moderate: CTT: -25°C to -40°C, (c) Intense: CTT: -41°C to -70°C and (d) Very Intense: : Less than -70°C  
PROBABILITY OF CYCLOGENESIS (FORMATION OF DEPRESSION): NIL: 0%, LOW: 1-33%, MODERATE: 34-66% AND HIGH: 67-100%  
This is a guidance Bulletin for WMO/ESCAP Panel Member countries. Visit respective National websites for Country specific Bulletins