



**REGIONAL SPECIALISED METEOROLOGICAL CENTRE-TROPICAL CYCLONES, NEW DELHI
TROPICAL WEATHER OUTLOOK**

DEMS-RSMC TROPICALCYCLONES NEW DELHI DATED 21.09.2022

TROPICAL WEATHER OUTLOOK FOR NORTH INDIAN OCEAN (THEBAY OF BENGAL OF BENGAL AND ARABIAN SEA) VALID FOR NEXT 120 HOURS ISSUED AT 0600 UTC OF 21.09.2022 BASED ON 0300 UTC OF 21.09.2022.

BAY OF BENGAL:

YESTERDAY'S LOW PRESSURE AREA OVER NORTHWEST BAY OF BENGAL (BOB) AND ADJOINING NORTH ODISHA-WEST BENGAL COASTS LAY OVER NORTHEAST MADHYA PRADESH & NEIGHBOURHOOD AT 0300 UTC OF TODAY, THE 21ST SEPTEMBER. IT IS VERY LIKELY TO MOVE WEST-NORTHWESTWARDS DURING NEXT 2 DAYS.

AS PER INSAT 3D IMAGERY, A LOW LEVEL CIRCULATION (LLC) LAY OVER NORTHEAST MADHYA PRADESH & ADJOINING UTTAR PRADESH AND NEIGHBOURHOOD AT 0300 UTC OF TODAY. SCATTERED TO BROKEN LOW AND MEDIUM CLOUDS WITH EMBEDDED INTENSE TO VERY INTENSE CONVECTION LAY OVER NORTH MADHYA PRADESH, CENTRAL UTTAR PRADESH AND WEST CHATTISGARH. MINIMUM CLOUD TOP TEMPERATURE IS - 80 DEGREE CELSIUS.

SCATTERED TO BROKEN LOW AND MEDIUM CLOUDS WITH EMBEDDED INTENSE TO VERY INTENSE CONVECTION LAY OVER NORTHWEST BAY OF BENGAL OFF ODISHA COAST. MINIMUM CLOUD TOP TEMPERATURE IS - 76 DEGREE CELSIUS. SCATTERED LOW AND MEDIUM CLOUDS WITH EMBEDDED MODERATE TO INTENSE CONVECTION LAY OVER CENTRAL BAY OF BENGAL, ANDAMAN SEA AND ARAKAN COAST. SCATTERED LOW AND MEDIUM CLOUDS WITH EMBEDDED ISOLATED WEAK TO MODERATE CONVECTION LAY OVER REST OF BAY OF BENGAL.

PROBABILITY OF CYCLOGENESIS (FORMATION OF DEPRESSION) DURING NEXT 120 HRS:

24 HOURS	24-48 HOURS	48-72 HOURS	72-96 HOURS	96-120 HOURS
NIL	NIL	NIL	NIL	NIL

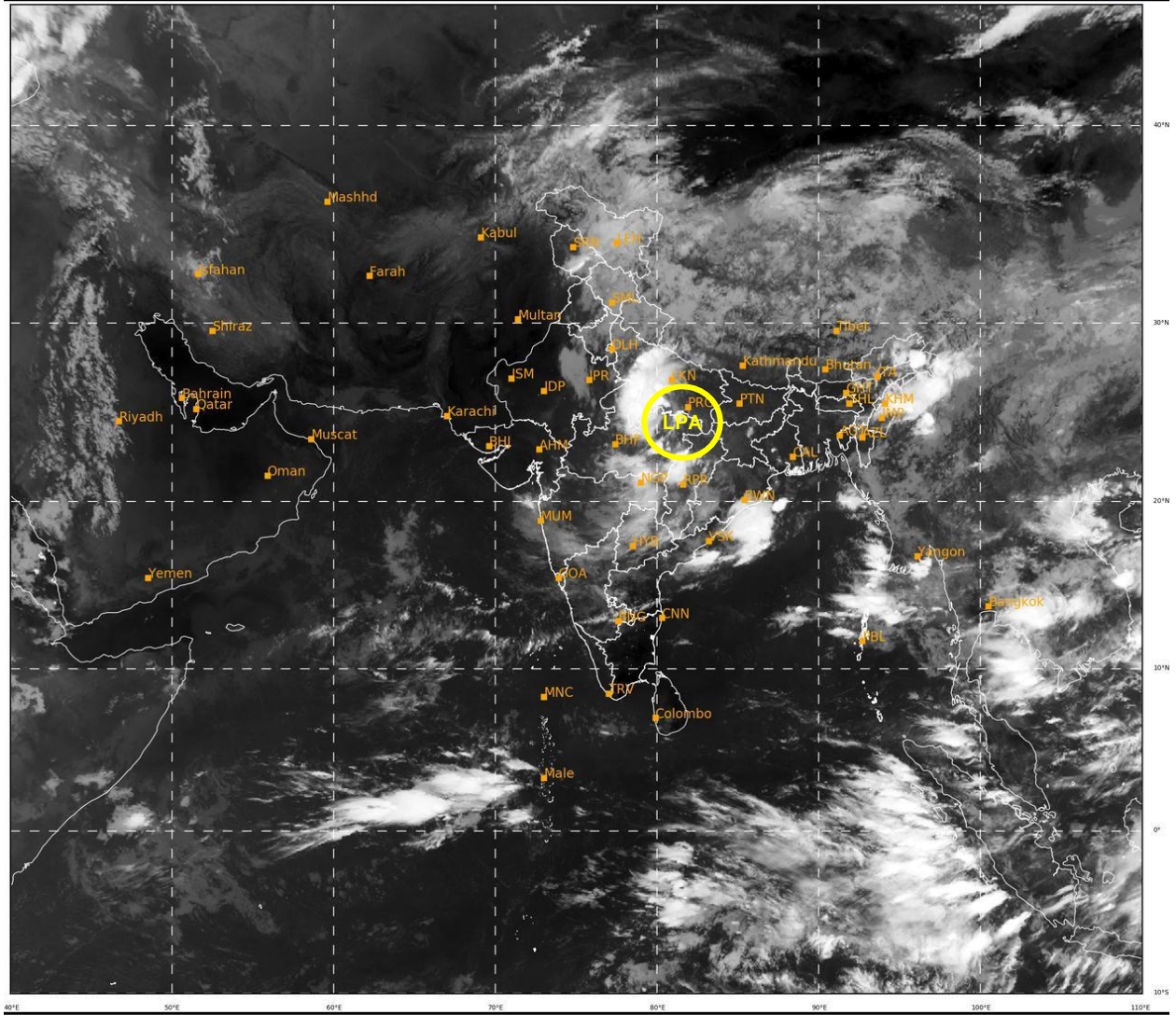
ARABIAN SEA:

SCATTERED LOW AND MEDIUM CLOUDS WITH EMBEDDED WEAK TO MODERATE CONVECTION LAY OVER SOUTHEAST & EASTCENTRAL ARABIAN SEA AND LAKSHADWEEP ISLANDS AREA.

PROBABILITY OF CYCLOGENESIS (FORMATION OF DEPRESSION) DURING NEXT 120 HRS:

24 HOURS	24-48 HOURS	48-72 HOURS	72-96 HOURS	96-120 HOURS
NIL	NIL	NIL	NIL	NIL

Remarks: NIL



452

927

IMD, DELHI

LPA: LOW PRESSURE AREA

Cloud distribution: (a) Isolated: <25%, Scattered:25-50%, Broken: 51-75%, Solid:>75%, Convection Intensity: (a) Weak: Cloud Top Temperature (CTT) >-25°C, (b) Moderate: CTT: - 25°C to -40°C, (c) Intense: CTT: - 41°C to -70°C and (d) Very Intense: : Less than -70°C
PROBABILITY OF CYCLOGENESIS (FORMATION OF DEPRESSION):NIL: 0%, LOW: 1-33%, , MODERATE: 34-66% AND HIGH: 67-100%
This is a guidance Bulletin for WMO/ESCAP Panel Member countries. Visit respective National websites for Country specific Bulletins