



**REGIONAL SPECIALISED METEOROLOGICAL CENTRE-TROPICAL CYCLONES, NEW DELHI  
TROPICAL WEATHER OUTLOOK**

**DEMS-RSMC TROPICAL CYCLONES NEW DELHI DATED 15.04.2025**

**TROPICAL WEATHER OUTLOOK FOR THE NORTH INDIAN OCEAN (THE BAY OF BENGAL AND THE ARABIAN SEA) VALID FOR THE NEXT 168 HOURS ISSUED AT 0600 UTC OF 15.04.2025 BASED ON 0300 UTC OF 15.04.2025.**

**BAY OF BENGAL:**

An upper air cyclonic circulation lay over southwest Bay of Bengal & adjoining Tamil Nadu at 1.5 km above mean sea level at 0300 UTC of today, the 15<sup>th</sup> April, 2025.

Scattered to broken low and medium clouds with embedded moderate to intense convection lay over Andaman Sea and isolated weak to moderate convection lay over Bay of Bengal.

**\*PROBABILITY OF CYCLOGENESIS (FORMATION OF DEPRESSION) DURING NEXT 168 HRS:**

24 HOURS	24-48 HOURS	48-72 HOURS	72-96 HOURS	96-120 HOURS	120-144 HOURS	144-168 HOURS
NIL	NIL	NIL	NIL	NIL	NIL	NIL

**\*NOTE: EVERY 24HR FORECAST IS VALID UPTO 0300 UTC (0830 IST) OF NEXT DAY**

**ARABIAN SEA:**

Yesterday's upper air cyclonic circulation over Gulf of Mannar & neighbourhood at 0.9 km above mean sea level persisted at 0300 UTC of today, the 15<sup>th</sup> April, 2025.

Scattered low and medium clouds with embedded isolated moderate to intense convection lay over southeast Arabian Sea off Kerala coast.

**\*PROBABILITY OF CYCLOGENESIS (FORMATION OF DEPRESSION) DURING NEXT 168 HRS:**

24 HOURS	24-48 HOURS	48-72 HOURS	72-96 HOURS	96-120 HOURS	120-144 HOURS	144-168 HOURS
NIL	NIL	NIL	NIL	NIL	NIL	NIL

**\*NOTE: EVERY 24HR FORECAST IS VALID UPTO 0300 UTC (0830 IST) OF NEXT DAY**

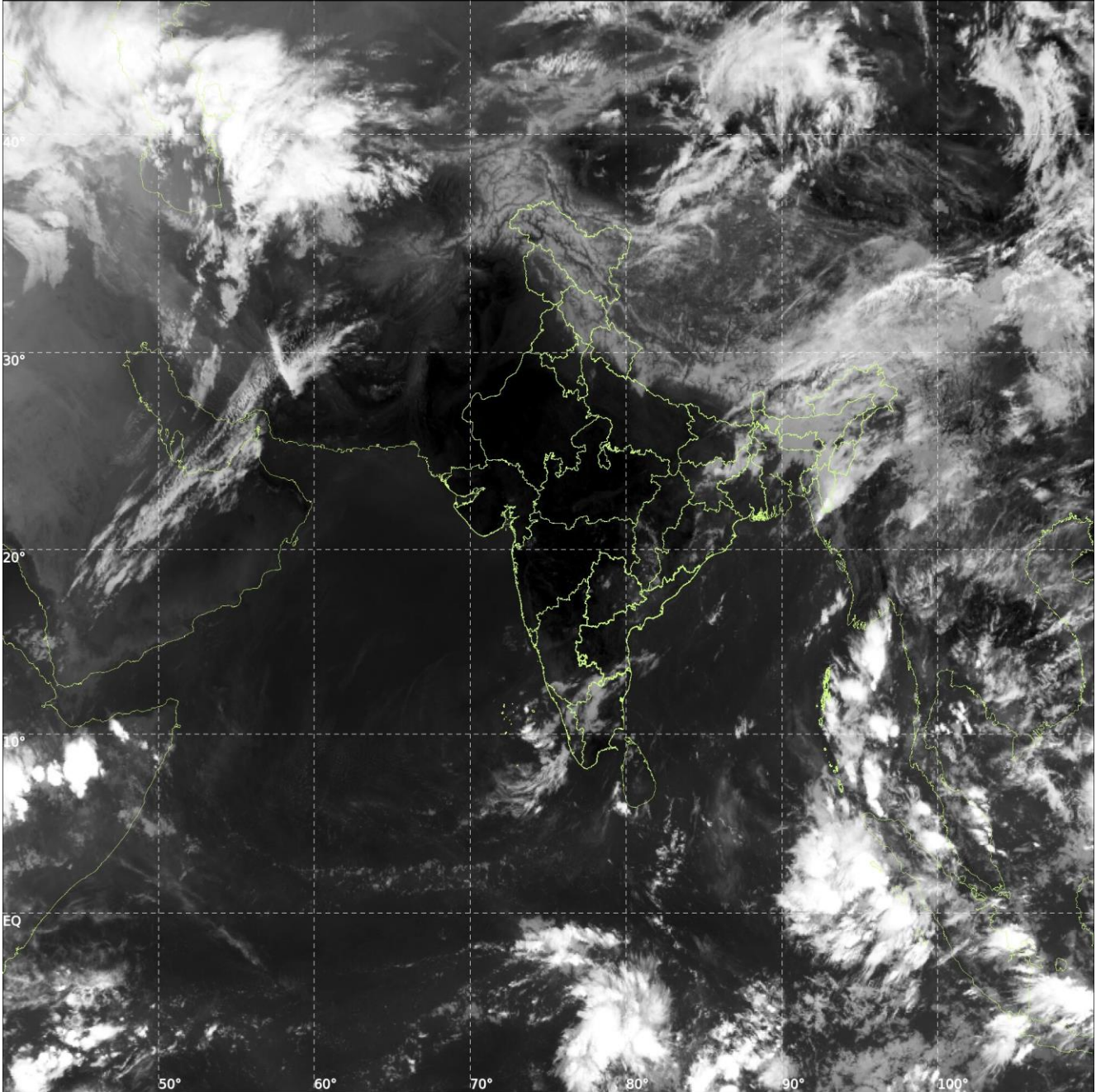
**REMARKS: NIL**



**INSAT-3DS IMG, Thermal Infrared1 Count @ 10.83  $\mu$ m**  
**GMT:15-04-2025/(0300-0327) IST:15-04-2025/(0830-0857)**  
**L1C MERCATOR (LINEAR STRETCH: 1%)**

441

896



**Cloud distribution: (a) Isolated: <25%, Scattered:25-50%, Broken: 51-75%, Solid:>75%, Convection Intensity: (a) Weak: Cloud Top Temperature(CTT)>-25°C,(b)Moderate:CTT:-25°Cto-40°C,(c)Intense:CTT: -41°Cto -70°Cand(d)Very Intense::Less than -70°C**  
**PROBABILITYOFCYCLOGENESIS(FORMATIONOFDEPRESSION):NIL:0%,LOW:1-33%,MODERATE:34-66%ANDHIGH:67-100%**  
**ThisisguidanceBulletinforWMO/ESCAPPanelMembercountries.VisitrespectiveNationalwebsitesforCountryspecificBulletins**