



**REGIONAL SPECIALISED METEOROLOGICAL CENTRE -TROPICAL CYCLONES, NEW DELHI
TROPICAL WEATHER OUTLOOK**

DEMS-RSMC TROPICAL CYCLONES NEW DELHI DATED 28.05.2026

TROPICAL WEATHER OUTLOOK FOR THE NORTH INDIAN OCEAN (THE BAY OF BENGAL AND THE ARABIAN SEA) VALID FOR THE NEXT 168 HOURS ISSUED AT 0600 UTC OF 28.05.2026 BASED ON 0300 UTC OF 28.05.2026.

BAY OF BENGAL:

Yesterday's upper air cyclonic circulation over Eastcentral & adjoining Southeast Bay of Bengal persisted over the same region and extended between 1.5 & 7.6 km above mean sea level at 0300 UTC of today, the 28th May 2026.

Scattered to broken low and medium clouds with embedded intense to very intense convection lay over central and southeast Bay of Bengal, Andaman Sea, Gulf of Martaban, and Tenasserim coast. Scattered low and medium clouds with embedded moderate to intense convection lay over north Bay of Bengal and isolated weak to moderate convection lay over southwest Bay of Bengal.

***PROBABILITY OF CYCLOGENESIS (FORMATION OF DEPRESSION) DURING NEXT 168 HRS)**

24 HOURS	24-48 HOURS	48-72 HOURS	72-96 HOURS	96-120 HOURS	120-144 HOURS	144-168 HOURS
NIL	NIL	NIL	NIL	NIL	NIL	NIL

***NOTE: EVERY 24HR FORECAST IS VALID UPTO 0300 UTC (0830 IST) OF NEXT DAY**

ARABIAN SEA:

Yesterday's upper air cyclonic circulation over the Southeast Arabian Sea & neighborhood persisted over the same region and extended upto 5.8 km above mean sea level at 0300 UTC of today, the 28th May 2026.

Scattered low and medium clouds with embedded intense to very intense convection lay over south Arabian Sea and Lakshadweep Islands area. Scattered low and medium clouds with embedded moderate to intense convection lay over westcentral Arabian Sea, Maldives, and Comorin area, and isolated weak to moderate convection lay over eastcentral Arabian Sea.

***PROBABILITY OF CYCLOGENESIS (FORMATION OF DEPRESSION) DURING NEXT 168 HRS:**

24 HOURS	24-48 HOURS	48-72 HOURS	72-96 HOURS	96-120 HOURS	120-144 HOURS	144-168 HOURS
NIL	NIL	NIL	NIL	NIL	NIL	NIL

***NOTE: EVERY 24HR FORECAST IS VALID UPTO 0300 UTC (0830 IST) OF NEXT DAY**

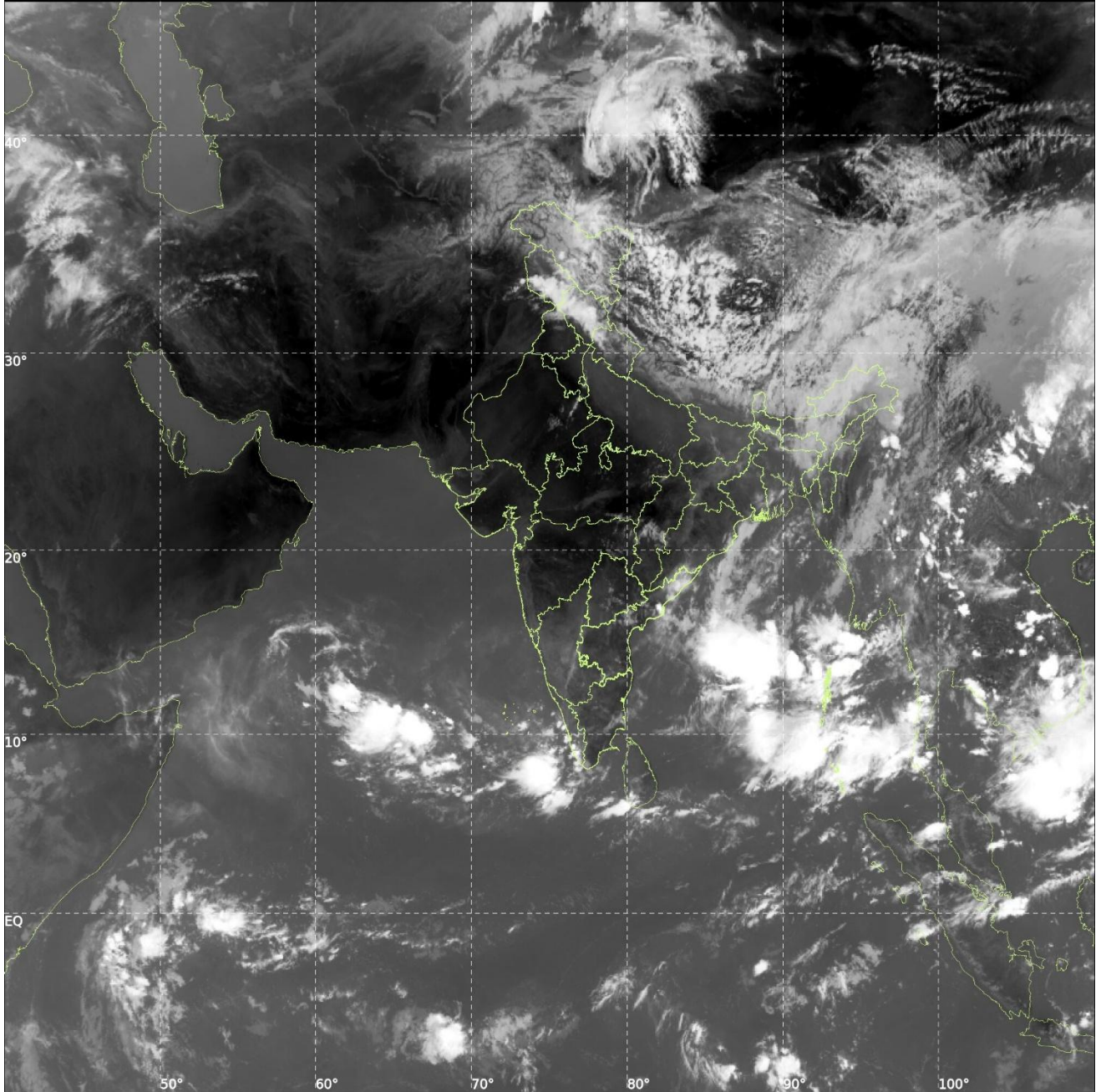
REMARKS: NIL



INSAT-3DS IMG, Thermal Infrared1 Count @ 10.83 μm
GMT:28-05-2026/(0500-0527) IST:28-05-2026/(1030-1057)
LIC MERCATOR (LINEAR STRETCH: 1%)

324

899



Cloud distribution: (a) Isolated: <25%, Scattered:25-50%, Broken: 51-75%, Solid:>75%, Convection Intensity: (a) Weak: Cloud Top Temperature(CTT)>-25°C, (b) Moderate: CTT:-25°Cto-40°C, (c) Intense: CTT: -41°Cto -70°C and (d) Very Intense::Less than -70°C Probability of cyclogenesis (formation of depression) :NIL:0%, LOW:1-33%, MODERATE:34-66% and HIGH:67-100%
This is a guidance Bulletin for WMO/ESCAP Panel Member countries. Visit respective National websites for Country specific Bulletins.