



**REGIONAL SPECIALISED METEOROLOGICAL CENTRE -TROPICAL CYCLONES, NEW DELHI  
TROPICAL WEATHER OUTLOOK**

**DEMS-RSMC TROPICAL CYCLONES NEW DELHI DATED 12.05.2026**

**TROPICAL WEATHER OUTLOOK FOR THE NORTH INDIAN OCEAN (THE BAY OF BENGAL AND THE ARABIAN SEA) VALID FOR THE NEXT 168 HOURS ISSUED AT 0600 UTC OF 12.05.2026 BASED ON 0300 UTC OF 12.05.2026.**

**BAY OF BENGAL:**

Yesterday's low-pressure area over southwest Bay of Bengal off north Sri Lanka coast moved nearly northwards, lay over the southwest Bay of Bengal at 0000 UTC and persisted over the same region at 0300 UTC of today, the 12th May 2026. The associated cyclonic circulation extended upto 4.5 km above mean sea level. It is likely to become more marked during next 48 hours.

As per INSAT 3DS imagery at 0300 UTC of 12th May, Low Level Circulation (LLC) over Southwest Bay of Bengal & neighbourhood : Associated scattered to broken low and medium clouds with embedded intense to very intense convection lay over the south & adjoining central Bay of Bengal (minimum cloud top temperature minus 70-90 degree Celsius) and moderate to intense convection lay over Sri Lanka, Palk Strait, Gulf of Mannar, Comorin area and neighbourhood (minimum cloud top temperature minus 40-70 degree Celsius).

The system is centered near 11.3N/ 82.5E and associated estimated central pressure is 1005 hPa. The stations along the east coast of Sri Lanka reported 1006.0 hPa to 1007.0 hPa and stations along the South Tamil Nadu coast reported 1005.8-1006.6 hPa at 0300 UTC. The reported pressure change during past 24 hours (P24) along east coast of Sri Lanka is about 1.0 hPa.

Scattered to broken low and medium clouds with embedded intense to very intense convection lay over the central & south Bay of Bengal, Andaman Sea, Gulf of Martaban and Tenasserim coast. Scattered low to medium clouds with embedded isolated weak to moderate convection lay over the north Bay of Bengal.

**\*PROBABILITY OF CYCLOGENESIS (FORMATION OF DEPRESSION) DURING NEXT 168 HRS)**

24 HOURS	24-48 HOURS	48-72 HOURS	72-96 HOURS	96-120 HOURS	120-144 HOURS	144-168 HOURS
NIL	NIL	NIL	LOW	NIL	NIL	NIL

**\*NOTE: EVERY 24HR FORECAST IS VALID UPTO 0300 UTC (0830 IST) OF NEXT DAY**

## ARABIAN SEA:

Yesterday's upper air cyclonic circulation over southeast Arabian Sea and Lakshadweep Islands area adjoining Kerala coast became less marked at 0000 UTC of today, the 12th May 2026.

Scattered low to medium clouds with embedded moderate to intense convection lay over south Arabian Sea, Lakshadweep Islands, Maldives and Comorin area. Scattered low to medium clouds with embedded isolated weak to moderate convection lay over eastcentral Arabian Sea.

### \*PROBABILITY OF CYCLOGENESIS (FORMATION OF DEPRESSION) DURING NEXT 168 HRS:

24 HOURS	24-48 HOURS	48-72 HOURS	72-96 HOURS	96-120 HOURS	120-144 HOURS	144-168 HOURS
NIL	NIL	NIL	NIL	NIL	NIL	NIL

\*NOTE: EVERY 24HR FORECAST IS VALID UPTO 0300 UTC (0830 IST) OF NEXT DAY

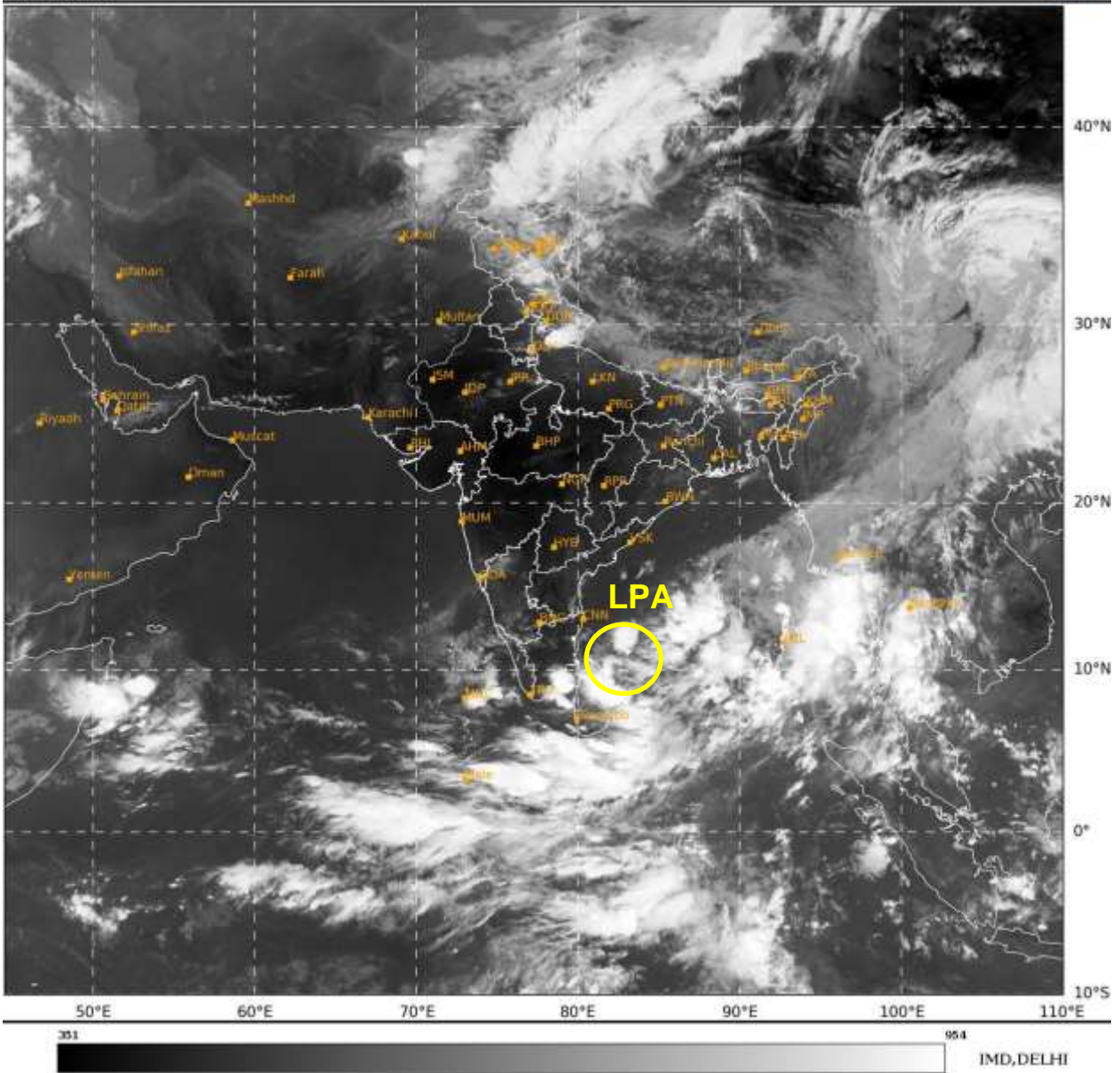
### REMARKS:

INSAT-3DS imageries indicate persistence of broad scale convection over southwest and adjoining westcentral & southeast Bay of Bengal since 7th May 2026. The cloud top brightness temperature (CTBT) imagery shows significant increase in the area of intense convection over the southwest BoB and adjoining areas.

The guidance from ECMM model indicates that the Madden Julian Oscillation (MJO) index is presently in phase 3 with amplitude close to 1 and is likely to continue in same phase during next 3 days. Thereafter, it is likely to move across phase 4 with amplitude remaining close to 1 during subsequent 3 days. The sea surface temperature is around 28-29°C over the south BoB. Gradually it is decreasing, becoming 27°C off Tamil Nadu-Andhra Pradesh coasts. The guidance from NCICS model indicates westerly wind anomaly (7-9 mps) over south BoB & adjoining Equatorial Indian Ocean (EIO) along with prevalence of Equatorial Rossby wave (ERW), MJO and Kelvin wave (KW) and easterly wind anomaly (>9 mps) to its north over westcentral & adjoining north BoB during next 2 days. All these features indicate a favourable environment for maintenance of intensity of the low-pressure area over southwest BoB during next 2 days. A zone of positive low level relative vorticity at 850 hPa has reduced and is about  $50-60 \times 10^{-6} \text{ s}^{-1}$  is seen over southwest BoB to the north of Sri Lanka extending upto 500 hPa. Upper-level divergence has decreased and is around  $20 \times 10^{-6} \text{ s}^{-1}$  over southwest BoB, but southwest to northeast oriented. Low-level convergence has also decreased in past 24 hours ( $10 \times 10^{-6} \text{ s}^{-1}$ ) over southwest BoB and is to the northeast of system centre. The upper tropospheric ridge is around  $13^{\circ} \text{ N}$ . Hence environmental features still remain conducive for maintenance of intensity of system over southwest Bay of Bengal.

Most of the numerical models are indicating the system as low pressure area over southwest BoB on 12th May. Models like ECMWF, NCUM, NCEP GFS, IMD GFS are not indicating any significant intensification of the system. However, BFS is showing different forecast compared to others. It is indicating intensification as well as northeastwards movement.

Considering all the above, the low-pressure area over southwest BoB is likely to become more marked during next 48 hours. The probability of cyclogenesis is kept as low on 15th May.



LPA: Low Pressure Area

Cloud distribution: (a) Isolated: <25%, Scattered:25-50%, Broken: 51-75%, Solid:>75%, Convection Intensity: (a) Weak: Cloud Top Temperature(CTT)>-25°C, (b) Moderate: CTT:-25°Cto-40°C, (c) Intense: CTT: -41°Cto -70°C and (d) Very Intense::Less than -70°C Probability of cyclogenesis (formation of depression) :NIL:0%, LOW:1-33%, MODERATE:34-66% and HIGH:67-100%  
This is a guidance Bulletin for WMO/ESCAP Panel Member countries. Visit respective National websites for Country specific Bulletins.