



**REGIONAL SPECIALISED METEOROLOGICAL CENTRE-TROPICAL CYCLONES, NEW DELHI
SPECIAL TROPICAL WEATHER OUTLOOK**

DEMS-RSMC TROPICAL CYCLONES NEW DELHI DATED 23.10.2020

SPECIAL TROPICAL WEATHER OUTLOOK FOR NORTH INDIAN OCEAN (THE BAY OF BENGAL AND ARABIAN SEA) VALID FOR NEXT 120 HOURS ISSUED AT 1500 UTC OF 23.10.2020 BASED ON 1200 UTC OF 23.10.2020.

BAY OF BENGAL:

THE **DEPRESSION** OVER NORTHWEST BAY OF BENGAL OFF WEST BENGAL – BANGLADESH COASTS MOVED NORTH-NORTHEASTWARDS, CROSSED WEST BENGAL AND ADJOINING BANGLADESH COASTS NEAR LATITUDE 21.8°N AND LONGITUDE 88.5°E BETWEEN 0600 & 0700 UTC OF 23RD OCTOBER 2020 AS A DEPRESSION WITH MAXIMUM SUSTAINED WIND SPEED OF 45-55 KMPH GUSTING TO 65 KMPH. IT MOVED ACROSS 24 PARGANAS DISTRICTS OF WEST BENGAL AND LAY CENTRED AT 0900 UTC OF 23RD OCTOBER, 2020 OVER BANGLADESH, NEAR LATITUDE 22.5°N AND LONGITUDE 89.1°E. FURTHER MOVING NORTH-NORTHEASTWARDS, IT LAY CENTRED AT 1200 UTC OF 23RD, OVER BANGLADESH NEAR LATITUDE 23.3°N AND LONGITUDE 89.5°E, ABOUT 160 KM NORTH-NORTHWEST OF KHEPUPARA (41984), 100 KM WEST-SOUTHWEST OF DHAKA (41923) AND ABOUT 190 KM WEST-SOUTHWEST OF AGARTALA (42724).

IT IS VERY LIKELY TO MOVE FURTHER NORTH-NORTHEASTWARDS MAINTAINING THE INTENSITY OF DEPRESSION FOR NEXT 12 HOURS AND WEAKEN THEREAFTER INTO A WELL MARKED LOW PRESSURE AREA OVER BANGLADESH.

FORECAST TRACK AND INTENSITY ARE GIVEN IN THE FOLLOWING TABLE:

Date/Time(IST)	Position (Lat. °N/ long. °E)	Maximum sustained surface wind speed (Kmph)	Category of cyclonic disturbance
23.10.20/1200	23.3/89.5	40-50 gusting to 60	DEPRESSION
24.10.20/0000	24.3/90.1	20-30 gusting to 40	WELL MARKED LOW

THE CENTRAL PRESSURE IS 1000 HPA AND MAXIMUM SUSTAINED WIND SPEED IS 20 KNOTS GUSTING TO 30 KNOTS.

AS PER SATELLITE IMAGERY BASED ON 1200 UTC OF 23RD OCTOBER, THE SYSTEM IS OVER COASTAL SOUTH-WEST BANGLADESH AND NEIGHBORHOOD. CENTER NOT CLEARLY DEFINED IN IR/VISIBLE IMAGERIES. BROKEN LOW/MEDIUM CLOUDS WITH EMBEDDED INTENSE TO VERY INTENSE CONVECTION LAY OVER NORTH BOB, COASTAL WEST BENGAL AND BANGLADESH, MEGHALAYA, SOUTH ASSAM AND MIZORMA-TRIPURA IN ASSOCIATION WITH THE SYSTEM. MINIMUM CLOUD TOP TEMPERATURE IS -93°C.

ARABIAN SEA:

SCATTERED LOW AND MEDIUM CLOUDS WITH EMBEDDED INTENSE TO VERY INTENSE CONVECTION LAY OVER EAST CENTRAL AND SOUTH WEST ARABIAN SEA. SCATTERED LOW AND MEDIUM CLOUDS WITH EMBEDDED MODERATE TO INTENSE CONVECTION LAY OVER SOUTHEAST ARABIAN SEA. PROBABILITY OF CYCLOGENESIS

PROBABILITY OF CYCLOGENESIS(FORMATION OF DEPRESSION) DURING NEXT 120 HRS :

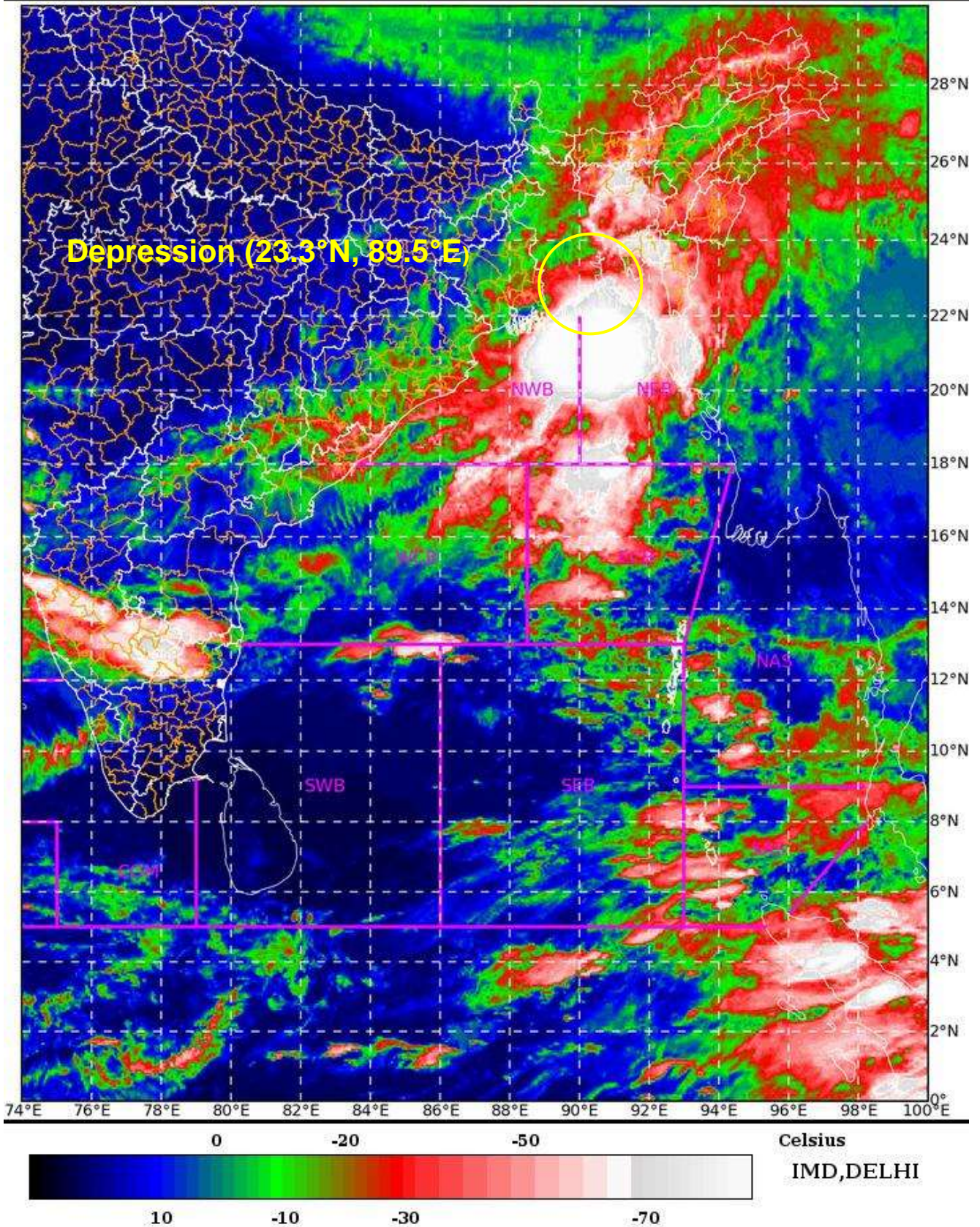
24 HOURS	24-48 HOURS	48-72 HOURS	72-96 HOURS	96-120 HOURS
NIL	NIL	NIL	NIL	NIL

**(SUNITHA DEVI S.)
SCIENTIST-E, RSMC, NEW DELHI**

PROBABILITY OF CYCLOGENESIS (FORMATION OF DEPRESSION):NIL: 0%, LOW: 1-25%, FAIR: 26-50%, MODERATE: 51-75% AND HIGH: 76-100%

This is a guidance Bulletin for the WMO/ESCAP Panel Member countries,. Please visit respective National websites for Country specific Bulletins

SAT : INSAT-3D IMG 23-10-2020/(1330 to 1356) GMT
IMG_TIR1_TEMP 10.8 um 23-10-2020/(1900 to 1926) IST
L1C Mercator



PROBABILITY OF CYCLOGENESIS (FORMATION OF DEPRESSION):NIL: 0%, LOW: 1-25%, FAIR: 26-50%, MODERATE: 51-75% AND HIGH: 76-100%

This is a guidance Bulletin for the WMO/ESCAP Panel Member countries,. Please visit respective National websites for Country specific Bulletins



OBSERVED AND FORECAST TRACK ALONGWITH CONE OF UNCERTAINTY OF DEPRESSION OVER BANGLADESH BASED ON 1200 UTC OF 23rd OCTOBER 2020



DATE/TIME IN UTC
 IST=UTC + 0530
 L: LOW PRESSURE AREA
 WML: WELL MARKED LOW PRESSURE AREA
 D: DEPRESSION (17-27 KT)
 DD: DEEP DEPRESSION (28-33 KT)
 CS: CYCLONIC STORM (34-47 KT)
 SCS: SEVERE CYCLONIC STORM (48-63KT)
 VSCS: VERY SEVERE CYCLONIC STORM (64-89 KT)
 ESCS: EXTREMELY SEVERE CYCLONIC STORM (90-119 KT)
 SuCS: SUPER CYCLONIC STORM (\geq 120 KT)

- LESS THAN 34 KT
- 34-47 KT
- \geq 48 KT
- OBSERVED TRACK
- FORECAST TRACK
- CONE OF UNCERTAINTY

PROBABILITY OF CYCLOGENESIS (FORMATION OF DEPRESSION):NIL: 0%, LOW: 1-25%, FAIR: 26-50%, MODERATE: 51-75% AND HIGH: 76-100%

This is a guidance Bulletin for the WMO/ESCAP Panel Member countries,. Please visit respective National websites for Country specific Bulletins