



**REGIONAL SPECIALISED METEOROLOGICAL CENTRE-TROPICAL CYCLONES, NEW DELHI  
TROPICAL WEATHER OUTLOOK**

**DEMS-RSMC TROPICAL CYCLONES NEW DELHI DATED 18.07.2023**

**TROPICAL WEATHER OUTLOOK FOR NORTH INDIAN OCEAN (THE BAY OF BENGAL AND THE ARABIAN SEA) VALID FOR NEXT 168 HOURS ISSUED AT 0700 UTC OF 18.07.2023 BASED ON 0300 UTC OF 18.07.2023.**

**BAY OF BENGAL:**

A CYCLONIC CIRCULATION LIES OVER NORTHWEST BAY OF BENGAL & ADJOINING COASTAL ODISHA AND EXTENDS UPTO 7.6 KM ABOVE MEAN SEA LEVEL TILTING SOUTHWARDS WITH HEIGHT. UNDER ITS INFLUENCE, A LOW PRESSURE AREA IS LIKELY TO FORM OVER NORTHWEST BAY OF BENGAL DURING NEXT 48 HOURS.

SCATTERED TO BROKEN LOW AND MEDIUM CLOUDS WITH EMBEDDED INTENSE TO VERY INTENSE CONVECTION LAY OVER CENTRAL ADJOINING SOUTH BAY OF BENGAL AND ANDAMAN SEA. SCATTERED LOW AND MEDIUM CLOUDS WITH EMBEDDED MODERATE TO INTENSE CONVECTION LAY OVER REST BAY OF BENGAL AND TENASSERIM COAST.

**PROBABILITY OF CYCLOGENESIS (FORMATION OF DEPRESSION) DURING NEXT 168 HRS:**

24 HOURS	24-48 HOURS	48-72 HOURS	72-96 HOURS	96-120 HOURS	120-144 HOURS	144-168 HOURS
NIL	NIL	NIL	LOW	LOW	NIL	NIL

**ARABIAN SEA:**

SCATTERED LOW AND MEDIUM CLOUDS WITH EMBEDDED MODERATE TO INTENSE CONVECTION LAY OVER EASTCENTRAL AND NORTHEAST ARABIAN SEA. SCATTERED LOW AND MEDIUM CLOUDS WITH EMBEDDED WEAK TO MODERATE CONVECTION LAY OVER SOUTH ARABIAN SEA, LAKSHADWEEP ISLAND AREA AND COMORIN AREA.

**PROBABILITY OF CYCLOGENESIS (FORMATION OF DEPRESSION) DURING NEXT 168 HRS:**

24 HOURS	24-48 HOURS	48-72 HOURS	72-96 HOURS	96-120 HOURS	120-144 HOURS	144-168 HOURS
NIL	NIL	NIL	NIL	NIL	NIL	NIL

**REMARKS:**

**MODEL GUIDANCE FOR BAY OF BENGAL (BOB):**

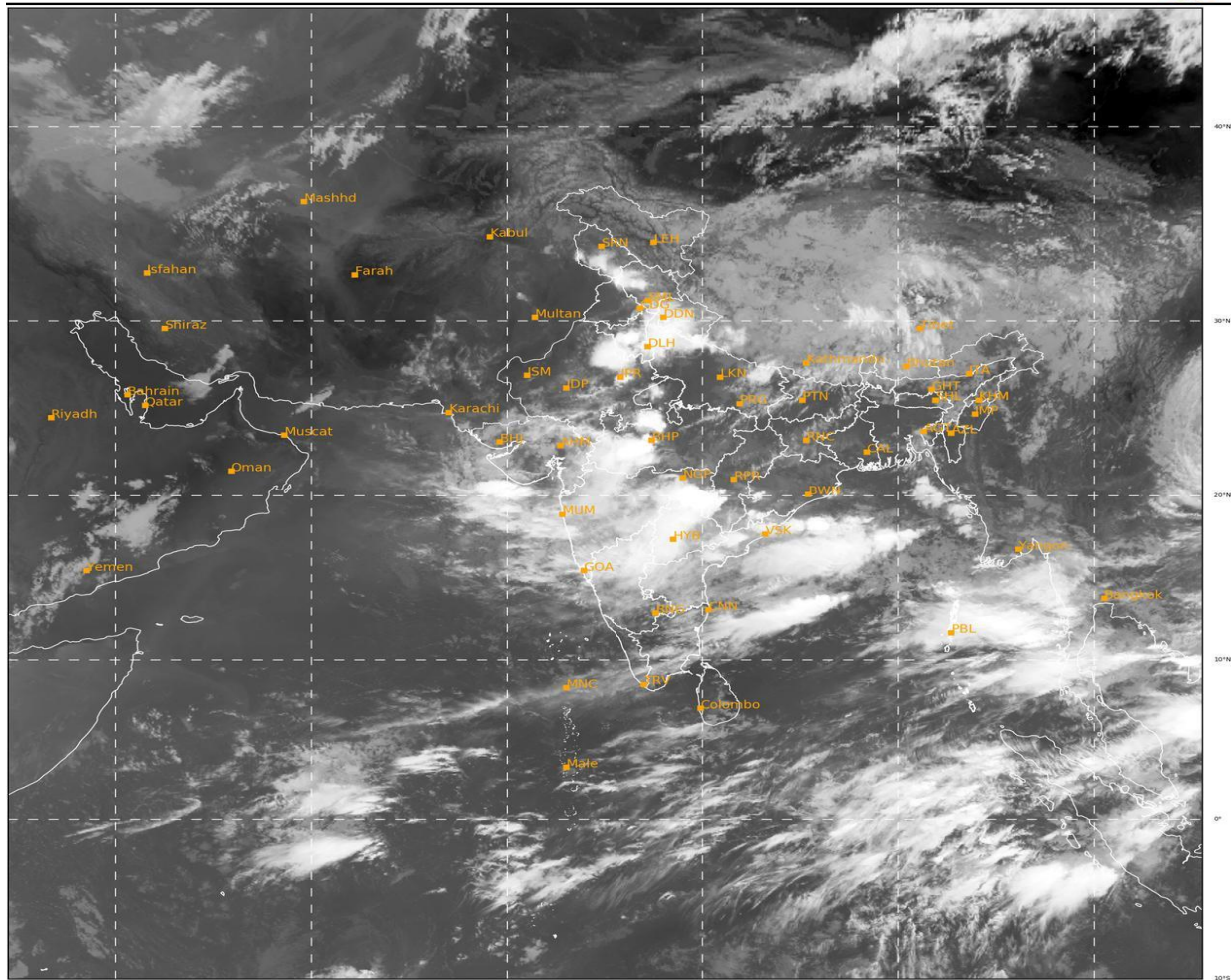
VARIOUS DETERMINISTIC MODELS INCLUDING ECMWF, IMD GFS, NCUM, NEPS AND GEFS ARE INDICATING A CYCLONIC CIRCULATION NORTHWEST BAY OF BENGAL AND ADJOINING COASTAL ODISHA. UNDER IT'S INFLUENCE, A LOW PRESSURE AREA IS

LIKELY TO FORM OVER NORTHWEST BOB & ADJOINING AREAS WITHIN 48 HOURS AND FURTHER BECOME MORE MARKED DURING 21<sup>ST</sup>-22<sup>ND</sup> JULY. ALTHOUGH ALL THE MODELS ARE SHOWING LOW PRESSURE SYSTEM OVER THE REGION AND ITS LIKELY WEST-NORTHWESTWARD MOVEMENT ACROSS ODISHA COAST, THERE IS A LARGE VARIATION AMONG MODELS WITH RESPECT TO LOCATION AND TIME OF FORMATION OF LOW OVER NORTHWEST BOB. IN VIEW OF THE AVAILABLE MODEL GUIDANCE AND ENVIRONMENTAL FEATURES, IT IS INFERRED THAT UNDER THE INFLUENCE OF THE EXISTING CYCLONIC CIRCULATION OVER NORTHWEST BOB AND ADJOINING AREAS, A LOW PRESSURE AREA IS VERY LIKELY TO FORM OVER THE SAME REGION DURING NEXT 48 HOURS. SUBSEQUENTLY, THE SYSTEM IS LIKELY TO MOVE WEST-NORTHWESTWARDS ACROSS ODISHA COAST. THE SYSTEM IS LIKELY TO BECOME MORE MARKED DURING 21<sup>ST</sup>-22<sup>ND</sup> OVER NORTHWEST BOB OFF ODISHA COAST AND THERE IS A LOW PROBABILITY OF IT'S INTENSIFICATION INTO A DEPRESSION.

Legends: IMD GFS: India Meteorological Department Global Forecast System, NCUM: National Centre for Medium Range Weather Forecasting Centre (NCMRWF) Unified Model, European Centre for Medium Range Weather Forecasting, GPP: Genesis Potential Parameter, National Centre for Environment Prediction GFS, ECMM: ECMWF multi model, GEFS: GFS ensemble, NEPS: NCUM ensemble prediction system, CNCUM: Coupled NCUM, CPC: Climate Prediction Center, NWS: National Weather Service)

SAT : INSAT-3D IMG  
 IMG\_TIR1 10.8 um  
 LIC Mercator

18-07-2023/(0300 to 0326) GMT  
 18-07-2023/(0830 to 0856) IST



337

932

IMD,DELHI

Cloud distribution: (a) Isolated: <25%, Scattered:25-50%, Broken: 51-75%, Solid:>75%, Convection Intensity: (a) Weak: Cloud Top Temperature (CTT) >-25°C, (b) Moderate: CTT: - 25°C to -40°C, (c) Intense: CTT: - 41°C to -70°C and (d) Very Intense: : Less than -70°C  
 PROBABILITY OF CYCLOGENESIS (FORMATION OF DEPRESSION):NIL: 0%, LOW: 1-33%, , MODERATE: 34-66% AND HIGH: 67-100%  
 This is a guidance Bulletin for WMO/ESCAP Panel Member countries. Visit respective National websites for Country specific Bulletins