



**REGIONAL SPECIALISED METEOROLOGICAL CENTRE-TROPICAL CYCLONES, NEW DELHI
SPECIAL TROPICAL WEATHER OUTLOOK**

DEMS-RSMC SPECIAL TROPICAL CYCLONES NEW DELHI DATED 13.08.2022

SPECIAL TROPICAL WEATHER OUTLOOK FOR NORTH INDIAN OCEAN (THE BAY OF BENGAL AND ARABIAN SEA) VALID FOR NEXT 120 HOURS ISSUED AT 0300 UTC OF 13.08.2022 BASED ON 0000 UTC OF 13.08.2022.

(A) DEPRESSION OVER NORTHWEST AND ADJOINING NORTHEAST ARABIAN SEA

THE DEPRESSION OVER NORTHEAST AND ADJOINING NORTHWEST ARABIAN SEA MOVED NEARLY WESTWARDS WITH A SPEED OF 13 KMPH DURING PAST 6 HOURS AND LAY CENTERED AT 0000 HOURS IST OF TODAY, THE 13TH AUGUST, 2022, OVER NORTHWEST AND ADJOINING NORTHEAST ARABIAN SEA NEAR LATITUDE 22.2°N AND LONGITUDE 63.7°E, ABOUT 540 KM WEST-SOUTHWEST OF NALIYA (42631), 620 KM WEST NORTHWEST OF PORBANDAR (42830), 460 KM SOUTHWEST OF KARACHI (41780) AND 460 KM SOUTHEAST OF CHAHBAHAR (40898).

IT IS VERY LIKELY TO MOVE NEARLY WESTWARDS FOR SOMETIME AND THEN NORTHWESTWARDS AND WEAKEN INTO A WELL MARKED LOW PRESSURE AREA DURING NEXT 12 HOURS. THEN, THE REMNANT WELL MARKED LOW PRESSURE AREA IS LIKELY TO RECURVE NORTH-NORTHEASTWARDS AND WEAKEN GRADUALLY FURTHER.

AS PER INSAT 3D IMAGERY AT 0000 UTC, INTENSITY OF THE SYSTEM IS CHARACTERISED AS T 1.5. THE CLOUD MASS HAS FURTHER SHEARED TO THE WEST OF SYSTEM CENTRE. BROKEN LOW AND MEDIUM CLOUDS WITH EMBEDDED INTENSE TO VERY INTENSE CONVECTION LAY OVER NORTHWEST AND ADJOINING WESTCENTRAL ARABIAN SEA AND ADJOINING OMAN. MINIMUM CLOUD TOP TEMPERATURE IS MINUS 93°C.

THE ESTIMATED MAXIMUM SUSTAINED WIND SPEED IS 25 KNOTS GUSTING TO 35 KNOTS. THE SEA CONDITION IS ROUGH TO VERY ROUGH OVER NORTHEAST AND ADJOINING NORTHWEST & CENTRAL ARABIAN SEA AND ALONG & OFF GUJARAT AND PAKISTAN COASTS. THE ESTIMATED CENTRAL PRESSURE IS 992 HPA.

(B) LIKELY FORMATION OF DEPRESSION OVER NORTHWEST BAY OF BENGAL AROUND 14TH AUGUST

THE CYCLONIC CIRCULATION OVER WEST MYANMAR AND NEIGHBOURHOOD NOW LIES OVER NORTHEAST BAY OF BENGAL. UNDER IT'S INFLUENCE, A LOW PRESSURE AREA IS LIKELY TO FORM OVER NORTH BAY OF BENGAL DURING NEXT 12 HOURS. IT IS LIKELY TO BECOME MORE MARKED DURING SUBSEQUENT 24 HOURS AND MOVE WEST-NORTHWESTWARDS THEREAFTER.

UNDER IT'S INFLUENCE, RAINFALL ACTIVITY WOULD INCREASE OVER GANGETIC WEST BENGAL AND ODISHA, TODAY ON 13TH AND ON 14TH AUGUST.

SCATTERED LOW AND MEDIUM CLOUDS WITH EMBEDDED INTENSE TO VERY INTENSE CONVECTION LAY OVER NORTH & CENTRAL BAY OF BENGAL. SCATTERED LOW AND MEDIUM CLOUDS WITH EMBEDDED MODERATE TO INTENSE CONVECTION LAY OVER REST

PARTS OF BAY OF BENGAL AND ANDAMAN SEA.

PROBABILITY OF CYCLOGENESIS (FORMATION OF DEPRESSION) DURING NEXT 120 HRS:

24 HOURS	24-48 HOURS	48-72 HOURS	72-96 HOURS	96-120 HOURS
NIL	LOW	MOD	NIL	NIL

REMARKS:

ARABIAN SEA:

SEA SURFACE TEMPERATURE IS AROUND 28-29°C OVER NORTH ARABIAN SEA. LOW LEVEL VORTICITY IS THE SAME DURING PAST 6 HOURS IS AROUND $150 \times 10^{-6} \text{ S}^{-1}$ TO THE SOUTH OF SYSTEM CENTRE. LOW LEVEL CONVERGENCE REMAINS SAME AROUND $20 \times 10^{-5} \text{ S}^{-1}$ TO THE SOUTHWEST OF SYSTEM CENTRE. UPPER LEVEL DIVERGENCE IS AROUND $20 \times 10^{-5} \text{ S}^{-1}$ TO THE SOUTHWEST OF SYSTEM CENTRE. WIND SHEAR IS HIGH (20-30 KNOTS) OVER THE SYSTEM AREA AND IS LIKELY TO REMAIN HIGH OVER NORTH ARABIAN SEA.

IN VIEW OF CURRENT ENVIRONMENTAL CONDITIONS, IT IS INFERRED THAT THE **DEPRESSION OVER NORTHWEST AND ADJOINING NORTHEAST ARABIAN SEA** IS VERY LIKELY TO MOVE NEARLY WESTWARDS FOR SOMETIME AND THEN NORTHWESTWARDS AND WEAKEN INTO A WELL MARKED LOW PRESSURE AREA DURING NEXT 12 HOURS. THEN, THE REMNANT WELL MARKED LOW PRESSURE AREA IS LIKELY TO RECURVE NORTH-NORTHEASTWARDS AND WEAKEN GRADUALLY FURTHER.

BAY OF BENGAL:

MOST OF THE MODELS ARE INDICATING LIKELY FORMATION OF A LOW PRESSURE AREA OVER NORTH BAY OF BENGAL BY 1200 UTC OF 13TH AUGUST. IT IS LIKELY TO INTENSIFY FURTHER DURING NEXT 24 HOURS AND MOVE WEST-NORTHWESTWARDS THEREAFTER.

(ARULALAN. T)
SCIENTIST C,
RSMC, NEW DELHI



OBSERVED AND FORECAST TRACK OF DEPRESSION OVER NORTHWEST AND ADJOINING NORTHEAST ARABIAN SEA BASED ON 0000 UTC OF 13th AUGUST, 2022



DATE/TIME IN UTC

IST=UTC + 0530

L: LOW PRESSURE AREA

WML: WELL MARKED LOW PRESSURE AREA

D: DEPRESSION (17-27 KT)

DD: DEEP DEPRESSION (28-33 KT)

CS: CYCLONIC STORM (34-47 KT)


SCS: SEVERE CYCLONIC STORM (48-63KT)

VSCS: VERY SEVERE CYCLONIC STORM (64-89 KT)

ESCS: EXTREMELY SEVERE CYCLONIC STORM (90-119 KT)

SuCS: SUPER CYCLONIC STORM \geq 120 KT)


 LESS THAN 34 KT

 34-47 KT

 \geq 48 KT

 OBSERVED TRACK

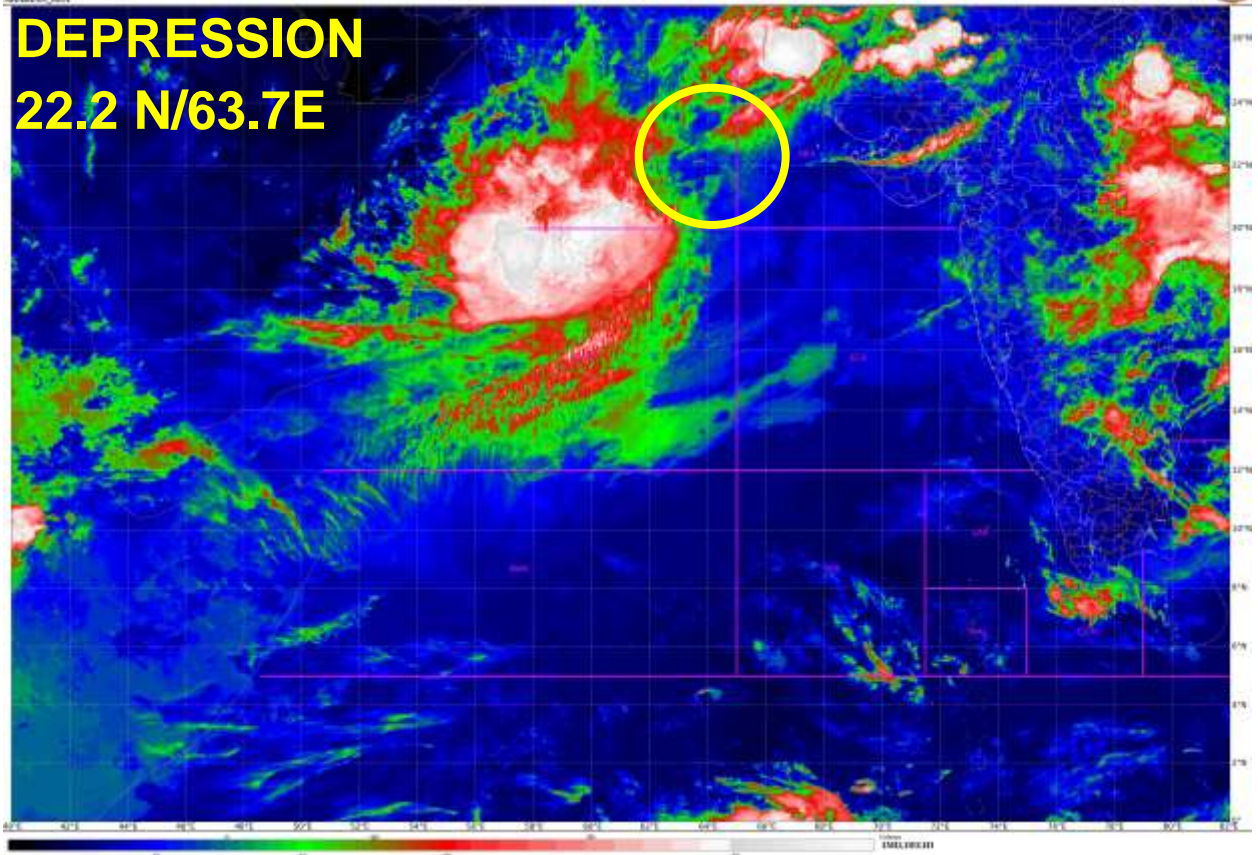
 FORECAST TRACK

 CONE OF UNCERTAINTY

SAT : ISSAAS/NOI IMG
IMG_TERR_TEMP: 10.0 um
JAPANESE SEA

13-06-2023 01:15 to 01:30 GMT
13-06-2023 00:40 to 01:21 JST

DEPRESSION
22.2 N/63.7E



Cloud distribution: (a) Isolated: <25%, Scattered:25-50%, Broken: 51-75%, Solid:>75%, Convection Intensity: (a) Weak: Cloud Top Temperature (CTT) >-25°C, (b) Moderate: CTT: - 25°C to -40°C, (c) Intense: CTT: - 41°C to -70°C and (d) Very Intense: : Less than -70°C
PROBABILITY OF CYCLOGENESIS (FORMATION OF DEPRESSION): NIL: 0%, LOW: 1-33%, , MODERATE: 34-66% AND HIGH: 67-100%
This is a guidance Bulletin for WMO/ESCAP Panel Member countries. Visit respective National websites for Country specific Bulletins