



**REGIONAL SPECIALISED METEOROLOGICAL CENTRE -TROPICAL CYCLONES, NEW DELHI
TROPICAL WEATHER OUTLOOK**

DEMS-RSMC TROPICAL CYCLONES NEW DELHI DATED 06.06.2026

TROPICAL WEATHER OUTLOOK FOR THE NORTH INDIAN OCEAN (THE BAY OF BENGAL AND THE ARABIAN SEA) VALID FOR THE NEXT 168 HOURS ISSUED AT 0600 UTC OF 06.06.2026 BASED ON 0300 UTC OF 06.06.2026.

BAY OF BENGAL:

Yesterday's upper air cyclonic circulation over Myanmar & adjoining Andaman Sea and extended upto 5.8 km above mean sea level lay over the same region at 0300 UTC of today, the 06th June 2026.

Scattered to broken, low and medium clouds with embedded intense to very intense convection lay over the north Bay of Bengal, southeast & eastcentral Bay of Bengal, the Andaman Sea, Gulf of Martaban and Arakan Coast. Scattered low and medium clouds with embedded isolated moderate to intense convection lay over rest of the Bay of Bengal.

***PROBABILITY OF CYCLOGENESIS (FORMATION OF DEPRESSION) DURING NEXT 168 HRS)**

24 HOURS	24-48 HOURS	48-72 HOURS	72-96 HOURS	96-120 HOURS	120-144 HOURS	144-168 HOURS
NIL	NIL	NIL	NIL	NIL	NIL	NIL

***NOTE: EVERY 24HR FORECAST IS VALID UPTO 0300 UTC (0830 IST) OF NEXT DAY**

ARABIAN SEA:

Yesterday's upper air cyclonic circulation over coastal Karnataka & neighbourhood lay over the same region at 3.1 km above mean sea level at 0300 UTC of today, the 06th June 2026.

Scattered to broken low and medium clouds with embedded intense to very intense convection lay over the eastcentral & southeast Arabian Sea, Lakshadweep Islands area, Maldives and Comorin area. Isolated moderate to intense convection lay over southwest and adjoining westcentral Arabian sea.

***PROBABILITY OF CYCLOGENESIS (FORMATION OF DEPRESSION) DURING NEXT 168 HRS:**

24 HOURS	24-48 HOURS	48-72 HOURS	72-96 HOURS	96-120 HOURS	120-144 HOURS	144-168 HOURS
NIL	NIL	NIL	NIL	NIL	NIL	NIL

***NOTE: EVERY 24HR FORECAST IS VALID UPTO 0300 UTC (0830 IST) OF NEXT DAY**

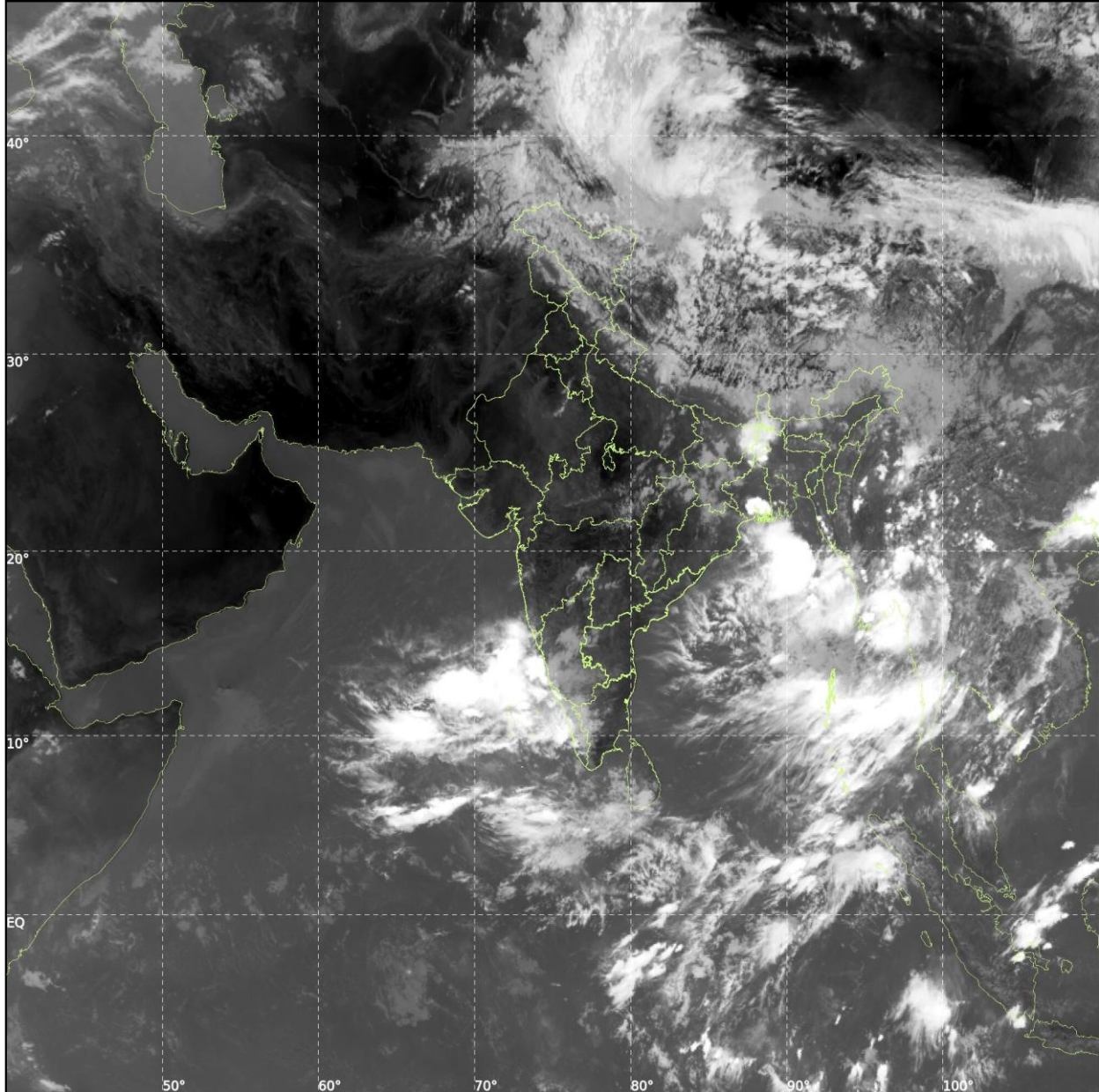
REMARKS: NIL



INSAT-3DS IMG, Thermal Infrared1 Count @ 10.83 μm
GMT:06-06-2026/(0530-0557) IST:06-06-2026/(1100-1127)
L1C MERCATOR (LINEAR STRETCH: 1%)

332

906



Cloud distribution: (a) Isolated: <25%, Scattered:25-50%, Broken: 51-75%, Solid:>75%, Convection Intensity: (a) Weak: Cloud Top Temperature(CTT)>-25°C, (b) Moderate: CTT:-25°Cto-40°C, (c) Intense: CTT: -41°Cto -70°C and (d) Very Intense::Less than -70°C Probability of cyclogenesis (formation of depression) :NIL:0%, LOW:1-33%, MODERATE:34-66% and HIGH:67-100%
This is a guidance Bulletin for WMO/ESCAP Panel Member countries. Visit respective National websites for Country specific Bulletins.