



**REGIONAL SPECIALISED METEOROLOGICAL CENTRE -TROPICAL CYCLONES, NEW DELHI
TROPICAL WEATHER OUTLOOK**

DEMS-RSMC TROPICAL CYCLONES NEW DELHI DATED 16.05.2026

TROPICAL WEATHER OUTLOOK FOR THE NORTH INDIAN OCEAN (THE BAY OF BENGAL AND THE ARABIAN SEA) VALID FOR THE NEXT 168 HOURS ISSUED AT 0600 UTC OF 16.05.2026 BASED ON 0300 UTC OF 16.05.2026.

BAY OF BENGAL:

Yesterday's well-marked low pressure area over the southwest and adjoining westcentral Bay of Bengal lay as a low pressure area over the same region at 0300 UTC of today, the 16th May 2026. The associated cyclonic circulation extended upto 4.5 km above mean sea level tilting southwestwards with height.

As per INSAT 3DS imagery at 0300 UTC of 16th May, the vortex lay over southwest & adjoining westcentral Bay of Bengal and neighbourhood. Associated scattered to broken low and medium clouds with embedded intense to very intense convection lay over the south Bay of Bengal (with minimum cloud top temperature minus 70-90 degree Celsius). Weak to moderate convection lay over Rayalseema, south coastal Andhra Pradesh, Tamil Nadu, Sri Lanka, Palk Strait, Gulf of Mannar and Comorin area (with minimum cloud top temperature minus 30-50 degree Celsius).

Scattered to broken low and medium clouds with embedded intense to very intense convection lay over eastcentral and south Bay of Bengal, Andaman sea, Gulf of Martaban, Tenasserim coast and Arakan coast. Scattered low to medium clouds with embedded moderate to intense convection lay over the north & westcentral Bay of Bengal.

***PROBABILITY OF CYCLOGENESIS (FORMATION OF DEPRESSION) DURING NEXT 168 HRS)**

24 HOURS	24-48 HOURS	48-72 HOURS	72-96 HOURS	96-120 HOURS	120-144 HOURS	144-168 HOURS
NIL	NIL	NIL	NIL	NIL	NIL	NIL

***NOTE: EVERY 24HR FORECAST IS VALID UPTO 0300 UTC (0830 IST) OF NEXT DAY**

"-" Genesis has already occurred

ARABIAN SEA:

Scattered to broken low and medium clouds with embedded intense to very intense convection lay over eastcentral & southeast Arabian Sea off Karnataka–Kerala coast Lakshadweep Islands area, Maldiva areas and also over southwest Arabian Sea. Scattered low to medium clouds with embedded moderate to intense convection lay over rest of central and southeast and Comorin Area.

***PROBABILITY OF CYCLOGENESIS (FORMATION OF DEPRESSION) DURING NEXT 168 HRS:**

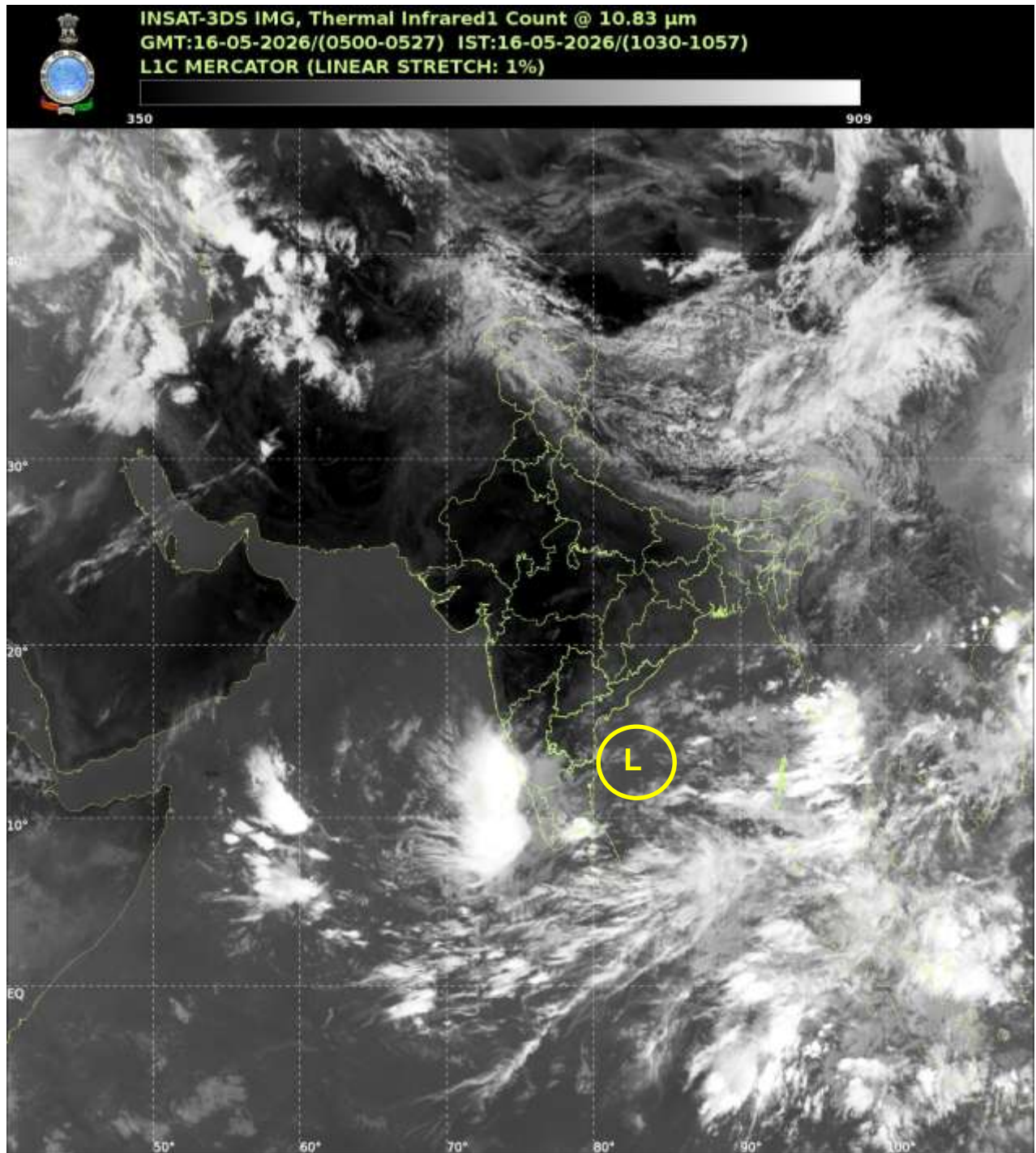
24 HOURS	24-48 HOURS	48-72 HOURS	72-96 HOURS	96-120 HOURS	120-144 HOURS	144-168 HOURS
NIL	NIL	NIL	NIL	NIL	NIL	NIL

***NOTE: EVERY 24HR FORECAST IS VALID UPTO 0300 UTC (0830 IST) OF NEXT DAY**

Cloud distribution: (a) Isolated: <25%, Scattered:25-50%, Broken: 51-75%, Solid:>75%, Convection Intensity: (a) Weak: Cloud Top Temperature(CTT)>-25°C, (b) Moderate: CTT:-25°Cto-40°C, (c) Intense: CTT: -41°Cto -70°C and (d) Very Intense::Less than -70°C Probability of cyclogenesis (formation of depression) :NIL:0%, LOW:1-33%, MODERATE:34-66% and HIGH:67-100%

This is a guidance Bulletin for WMO/ESCAP Panel Member countries. Visit respective National websites for Country specific Bulletins.

REMARKS:



L: Low Pressure Area