



**REGIONAL SPECIALISED METEOROLOGICAL CENTRE-TROPICAL CYCLONES, NEW DELHI
TROPICAL WEATHER OUTLOOK**

DEMS-RSMC SPECIAL TROPICAL CYCLONES NEW DELHI DATED 24.10.2023

FROM: RSMC –TROPICAL CYCLONES, NEW DELHI

**TO: STORM WARNING CENTRE, NAYPYI TAW (MYANMAR)
STORM WARNING CENTRE, BANGKOK (THAILAND)
STORM WARNING CENTRE, COLOMBO (SRILANKA)
STORM WARNING CENTRE, DHAKA (BANGLADESH)
STORM WARNING CENTRE, KARACHI (PAKISTAN)
METEOROLOGICAL OFFICE, MALE (MALDIVES)
OMAN METEOROLOGICAL DEPARTMENT, MUSCAT (THROUGH RTH JEDDAH)
YEMEN METEOROLOGICAL SERVICES, REPUBLIC OF YEMEN (THROUGH RTH JEDDAH)
NATIONAL CENTRE FOR METEOROLOGY, UAE (THROUGH RTH JEDDAH)
PRESIDENCY OF METEOROLOGY AND ENVIRONMENT, SAUDI ARABIA (THROUGH RTH JEDDAH)
IRAN METEOROLOGICAL ORGANISATION, (THROUGH RTH JEDDAH)
QATAR METEOROLOGICAL DEPARTMENT (THROUGH RTH JEDDAH)**

TROPICAL CYCLONE ADVISORY NO. 26 FOR NORTH INDIAN OCEAN (THE BAY OF BENGAL AND THE ARABIAN SEA) VALID FOR NEXT 120 HOURS ISSUED AT 0630 UTC OF 24.10.2023 BASED ON 0300 UTC OF 24.10.2023.

SUB: (A) SEVERE CYCLONIC STORM “TEJ” (PRONOUNCED AS TEJ) OVER COASTAL YEMEN AND (B) SEVERE CYCLONIC STORM “HAMOON” (PRONOUNCED AS HAMOON) INTENSIFIED INTO A VERY SEVERE CYCLONIC STORM OVER NORTHWEST & ADJOINING NORTHEAST BAY OF BENGAL.

(A) SEVERE CYCLONIC STORM “TEJ” (PRONOUNCED AS TEJ) OVER COASTAL YEMEN

THE SEVERE CYCLONIC STORM “TEJ” (PRONOUNCED AS TEJ) OVER COASTAL YEMEN MOVED WEST-NORTHWESTWARD WITH A SPEED OF 7 KMPH DURING PAST 6 HOURS AND LAY CENTERED AT 0300 UTC OF TODAY, THE 24TH OCTOBER, OVER THE SAME REGION, NEAR LATITUDE 16.0°N AND LONGITUDE 51.8°E, ABOUT 30 KM WEST-SOUTHWEST OF AL GHAI DAH (YEMEN, 41398) AND 270 KM WEST-SOUTHWEST OF SALALAH (OMAN, 41316).

IT IS VERY LIKELY TO MOVE FURTHER WEST-NORTHWESTWARDS AND WEAKEN INTO A CYCLONIC STORM DURING THE NEXT 03 HOURS AND INTO A DEPRESSION DURING THE SUBSEQUENT 06 HOURS.

FORECAST TRACK AND INTENSITY ARE GIVEN BELOW:

DATE/TIME(UTC)	POSITION (LAT. °N/ LONG. °E)	MAXIMUM SUSTAINED SURFACE WIND SPEED (KMPH)	CATEGORY OF CYCLONIC DISTURBANCE
24.10.23/0300	16.0/51.8	90-100 GUSTING TO 110	SEVERE CYCLONIC STORM
24.10.23/0600	16.1/51.5	70-80 GUSTING TO 90	CYCLONIC STORM
24.10.23/1200	16.2/51.2	30-40 GUSTING TO 50	DEPRESSION

AS PER INSAT 3D IMAGERY, ASSOCIATED BROKEN LOW AND MEDIUM CLOUDS WITH EMBEDDED INTENSE TO VERY INTENSE CONVECTION LAY OVER WESTCENTRAL ARABIAN SEA BETWEEN LATITUDE 14.0°N TO 18.0°N AND LONGITUDE 50.0°E TO 57.0°E & EAST YEMEN, OMAN AND ADJOINING SAUDI ARABIA. MINIMUM CLOUD TOP TEMPRATURE IS MINUS 75°C. THE SATELLITE IMAGERY SHOWS GRADUAL DISORGANISATION IN STRUCTURE. MULTISATELLITE WINDS INDICATE STRONGER WINDS IN THE NORTH & EASTERN SECTOR. TOTAL PRECIPITABLE WATER IMAGERY SHOWS THAT DRY AIR INCURSION IS TAKING PLACE FROM THE WEST AND SOUTHWEST SECTOR OF THE SYSTEM AND THERE IS DECREASE IN WARM MOIST AIR INCURSION.

ASSOCIATED MAXIMUM SUSTAINED WIND SPEED IS 50 KNOTS GUSTING TO 60 KNOTS. THE ESTIMATED CENTRAL PRESSURE IS 996 HPA.

LATEST OBSERVATIONS INDICATE THAT GALE WIND SPEED REACHING 60 KNOTS GUSTING TO 70 KNOTS ARE PREVAILING OVER EAST YEMEN AND SOUTH OMAN COASTS. IT WILL DECREASE GRADUALLY.

SEA CONDITION:

WESTCENTRAL ARABIAN SEA: HIGH SEA CONDITION IS LIKELY FROM 0600 UTC OF 24TH OCTOBER NOON. IT WOULD BECOME VERY ROUGH TO ROUGH FOR SUBSEQUENT 06 HOURS.

(B)SEVERE CYCLONIC STORM “HAMOON” (PRONOUNCED AS HAMOON) INTENSIFIED INTO A VERY SEVERE CYCLONIC STORM OVER NORTHWEST AND ADJOINING NORTHEAST BAY OF BENGAL

THE SEVERE CYCLONIC STORM “HAMOON” (PRONOUNCED AS HAMOON) OVER NORTHWEST BAY OF BENGAL MOVED EAST-NORTHEASTWARDS WITH A SPEED OF 23 KMPH DURING PAST 6 HOURS, INTENSIFIED INTO A VERY SEVERE CYCLONIC STORM AND LAY CENTERED AT 0300 UTC OF 24TH OCTOBER OVER NORTHWEST AND ADJOINING NORTHEAST BAY OF BENGAL, NEAR LATITUDE 20.0°N AND LONGITUDE 89.5°E, ABOUT 290 KM EAST OF PARADIP (ODISHA, 42976), 270 KM SOUTHEAST OF DIGHA (WEST BENGAL, 42901), 230 KM SOUTH-SOUTHWEST OF KHEPUPARA (BANGLADESH, 41984) AND 350 KM SOUTHWEST OF CHITTAGONG (BANGLADESH, 41977).

IT IS VERY LIKELY TO MAINTAIN ITS INTENSITY OF VERY SEVERE CYCLONIC STORM FOR A FEW HOURS. THEREAFTER, IT IS LIKELY TO WEAKEN GRADUALLY WHILE MOVING NORTHEASTWARDS AND CROSS BANGLADESH COAST BETWEEN KHEPUPARA AND CHITTAGONG AROUND 1200 UTC OF 25TH OCTOBER AS A CYCLONIC STORM WITH WIND SPEED OF 65 TO 75 KMPH GUSTING TO 85 KMPH.

FORECAST TRACK AND INTENSITY ARE GIVEN BELOW:

DATE/TIME (UTC)	POSITION (LAT. °N/ LONG. °E)	MAXIMUM SUSTAINED SURFACE WIND SPEED (KMPH)	CATEGORY OF CYCLONIC DISTURBANCE
24.10.23/0300	20.0/89.5	115-125 gusting to 135	Very Severe Cyclonic Storm
24.10.23/0600	20.3/89.8	120-130 gusting to 140	Very Severe Cyclonic Storm
24.10.23/1200	20.6/90.1	105-115 gusting to 125	Severe Cyclonic Storm
24.10.23/1800	21.1/90.5	100-110 gusting to 120	Severe Cyclonic Storm
25.10.23/0000	21.6/90.9	80-90 gusting to 100	Cyclonic Storm
25.10.23/1200	22.3/91.4	65-75 gusting to 85	Cyclonic Storm
26.10.23/0000	23.5/92.1	40-50 gusting to 60	Depression

AS PER INSAT 3D IMAGERY, THE INTENSITY OF THE SYSTEM IS CHARACTERISED AS T4.0. IT SHOWS THAT CENTRAL DENSE OVERCAST(CDO). ASSOCIATED SCATTERED TO BROKEN LOW AND MEDIUM CLOUDS WITH EMBEDDED INTENSE TO VERY INTENSE CONVECTION LAY OVER NORTHWEST AND ADJOINING NORTHEAST BAY OF BENGAL BETWEEN LATITUDE 16.5N TO 21.5N AND LONGITUDE 85.0E TO 90.5E. MINIMUM CLOUD TOP TEMPRATURE IS MINUS 93 DEGREE CELSIUS. OUTFLOW CLOUD BANDS ARE OBSERVED OVER NORTH ODISHA, WEST BENGAL AND NORTHEASTERN STATES OF INDIA. MULTISATELLITE WINDS INDICATE STRONGER WINDS IN EASTERN SECTOR. TOTAL PRECIPITABLE WATER IMAGERY INDICATES WARM MOIST AIR INCURSION INTO THE SYSTEM CORE.

ASSOCIATED MAXIMUM SUSTAINED WIND SPEED IS 65 KNOTS GUSTING TO 75 KNOTS. THE ESTIMATED CENTRAL PRESSURE IS 985 HPA.

WIND GUIDANCE (WARNING MAP ENCLOSED):

- **NORTHEAST BAY OF BENGAL:**
GALE WIND SPEED REACHING 115-125 KMPH GUSTING TO 135 KMPH IS PREVAILING. IT IS LIKELY TO BECOME 120-130 KMPH GUSTING 140 KMPH DURING NEXT 6 HOURS. IT WOULD DECREASE GRADUALLY THEREAFTER BECOMING GALE WIND SPEED REACHING 100-110 KMPH GUSTING TO 120 KMPH BY 1800 UTC OF 24TH & 65-75 KMPH GUSTING TO 85 KMPH BY 1200 UTC OF 25TH AND WOULD DECREASE THEREAFTER.
- **NORTHWEST BAY OF BENGAL:**
GALE WIND SPEED REACHING 115-125 KMPH GUSTING TO 135 KMPH IS PREVAILING. IT IS LIKELY TO BECOME 120-130 KMPH GUSTING 140 KMPH DURING NEXT 6 HOURS. IT WOULD DECREASE GRADUALLY THEREAFTER BECOMING GALE WIND SPEED REACHING 80-90 KMPH GUSTING TO 100 KMPH BY 1800 UTC OF 24TH AND SQUALLY WIND SPEED REACHING 50-60 KMPH GUSTING TO 70 KMPH BY 1200 UTC OF 25TH AND WOULD DECREASE THEREAFTER.
- **ADJOINING WESTCENTRAL BAY OF BENGAL: SQUALLY WIND SPEED REACHING 50-60 KMPH GUSTING TO 70 KMPH IS PREVAILING AND WOULD GRADUALLY DECREASE BECOMING 30-40 KMPH GUSTING TO 50 KMPH FROM 1200 UTC OF 24TH.**
- **ADJOINING EASTCENTRAL BAY OF BENGAL: SQUALLY WIND SPEED REACHING 50-60 KMPH GUSTING TO 70 KMPH IS PREVAILING AND WOULD GRADUALLY DECREASE BECOMING 40-50 KMPH GUSTING TO 60 KMPH FROM 1200 UTC OF 24TH.**

- **ALONG & OFF ODISHA, WEST BENGAL, BANGLADESH AND NORTH MYANMAR COASTS:**
SQUALLY WIND SPEED REACHING 40-50 KMPH GUSTING TO 60 KMPH IS LIKELY TO PREVAIL ALONG & OFF ODISHA COAST ON 24TH. SQUALLY WIND SPEED REACHING 40-50 KMPH GUSTING TO 60 KMPH IS PREVAILING ALONG & OFF WEST BENGAL, BANGLADESH AND NORTH MYANMAR COASTS FROM 0000 UTC OF 24TH. IT WOULD GRADUALLY INCREASE BECOMING 65-75 KMPH GUSTING TO 85 KMPH ALONG & OFF BANGLADESH COAST, 55-65 KMPH GUSTING TO 75 KMPH ALONG & OFF NORTH MYANMAR COAST AND 45-55 KMPH GUSTING TO 65 KMPH ALONG & OFF WEST BENGAL COAST ON 25TH OCTOBER.
- **MIZORAM, TRIPURA, SOUTH ASSAM AND MANIPUR:**
SQUALLY WIND SPEED REACHING 40-50 KMPH GUSTING TO 60 KMPH IS LIKELY TO PREVAIL OVER MIZORAM AND TRIPURA AND STRONG WIND SPEED REACHING 30-40 KMPH GUSTING TO 50 KMPH OVER SOUTH ASSAM & MANIPUR ON 25TH OCTOBER.

STORM SURGE GUIDANCE FOR BANGLADESH COAST:

STORM SURGE OF ABOUT 1.0-1.5 METRE HEIGHT ABOVE THE ASTRONOMICAL TIDE IS LIKELY TO INUNDATE LOW LYING AREAS BETWEEN KHEPUPARA AND CHITTAGONG AROUND THE TIME OF LANDFALL.

SEA CONDITION:

- **NORTHEAST BAY OF BENGAL:**
PHENOMENAL SEA CONDITIONS ARE PREVAILING AND LIKELY TO CONTINUE TILL 1200 UTC OF 24TH AND WOULD BECOME VERY HIGH TO HIGH THEREAFTER TILL 1200 UTC OF 25TH AND VERY ROUGH TO ROUGH TILL 0000 UTC OF 26TH OCTOBER.
- **NORTHWEST BAY OF BENGAL:**
PHENOMENAL SEA CONDITIONS ARE PREVAILING AND LIKELY TO CONTINUE TILL 1200 UTC OF 24TH AND WOULD BECOME VERY HIGH TO HIGH THEREAFTER TILL 0000 UTC OF 25TH AND THEN VERY ROUGH TO ROUGH BY 1200 UTC OF 25TH OCTOBER.
- **ADJOINING WESTCENTRAL BAY OF BENGAL: VERY ROUGH TO ROUGH TILL 1200 UTC OF 24TH OCTOBER. IT IS LIKELY TO IMPROVE GRADUALLY THEREAFTER.**
- **ADJOINING EASTCENTRAL BAY OF BENGAL: VERY ROUGH TO ROUGH TILL 1200 UTC OF 24TH OCTOBER. IT IS LIKELY TO IMPROVE GRADUALLY THEREAFTER.**
- **ALONG & OFF ODISHA, WEST BENGAL, BANGLADESH AND NORTH MYANMAR COASTS: ROUGH TO VERY ROUGH SEA CONDITIONS ON 24TH AND 25TH OCTOBER.**

REMARKS:

ARABIAN SEA:

THE LOW LEVEL POSITIVE VORTICITY HAS DECREASED DURING PAST 3 HOURS AND IS AROUND $100 \times 10^{-6} \text{S}^{-1}$ AROUND SYSTEM CENTER WITH VERTICAL EXTENSION UPTO 200 HPA LEVEL. THE POSITIVE LOW LEVEL CONVERGENCE HAS DECREASED DURING PAST 3 HOURS AND IS ABOUT $30 \times 10^{-5} \text{S}^{-1}$ TO THE SOUTHWEST OF SYSTEM CENTER. POSITIVE UPPER LEVEL DIVERGENCE HAS DECREASED AND IS ABOUT $20 \times 10^{-5} \text{S}^{-1}$ EAST OF THE SYSTEM CENTRE. WIND SHEAR IS HIGH (25-30 KNOTS) OVER

SYSTEM AREA AND ALONG THE EXPECTED TRACK. COLD DRY AIR INCURSION IS TAKING PLACE INTO THE CORE FROM SOUTHEAST SECTOR. UNDER THESE CONDITIONS, THE SYSTEM WOULD WEAKEN RAPIDLY DURING NEXT 06 HOURS.

MOST OF THE MODELS ARE INDICATING WEAKENING OF THE SYSTEM BY 0000 UTC OF 25TH OVER CENTRAL PARTS OF YEMEN.

CONSIDERING ALL THESE, THE SEVERE CYCLONIC STORM "TEJ" IS VERY LIKELY TO MOVE FURTHER WEST-NORTHWESTWARDS AND WEAKEN INTO A CYCLONIC STORM DURING THE NEXT 03 HOURS AND INTO A DEPRESSION DURING SUBSEQUENT 06 HOURS.

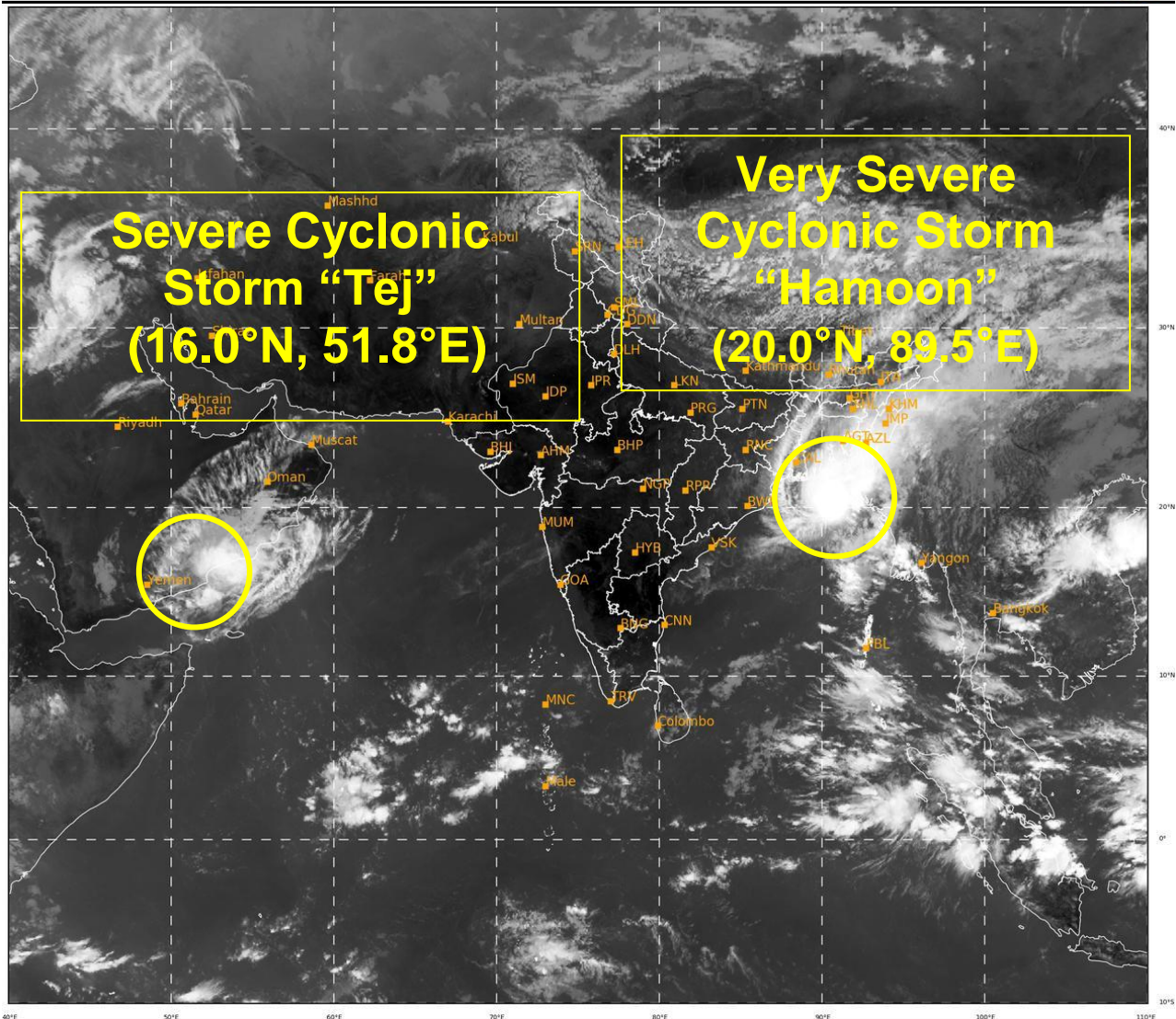
BAY OF BENGAL:

SEA SURFACE TEMPERATURE IS 28-30°C OVER NORTH BAY OF BENGAL. THE LOW LEVEL POSITIVE VORTICITY IS AROUND $150 \times 10^{-6} \text{S}^{-1}$ TO THE SOUTH OF THE SYSTEM CENTER. THE POSITIVE LOW LEVEL CONVERGENCE LIES AROUND THE SYSTEM CENTRE AND IS ABOUT $10 \times 10^{-5} \text{S}^{-1}$. POSITIVE UPPER LEVEL DIVERGENCE IS ABOUT $10-20 \times 10^{-5} \text{S}^{-1}$ ALONG THE FORECAST TRACK OF SYSTEM. IT IS NORTHEAST-SOUTHWEST ORIENTED. THE SYSTEM HAS ENTERED INTO A ZONE OF MODERATE TO HIGH (20-30 KNOTS) WIND SHEAR WHICH IS BECOMING HIGHER ALONG THE FORECAST TRACK. THE SYSTEM WOULD THUS ENTER UNFAVOURABLE ENVIRONMENT CONDITIONS AFTER NEXT 06 HOURS AND START WEAKENING GRADUALLY.

MODELS ARE IN AGREEMENT THAT THE VERY SEVERE CYCLONIC STORM "HAMOON" WOULD CROSS BANGLADESH COAST. THERE IS ALSO CONSENSUS AMONG VARIOUS MODELS WITH RESPECT TO WEAKENING BEFORE LANDFALL.

CONSIDERING ALL THESE, THE VERY SEVERE CYCLONIC STORM "HAMOON" OVER NORTHWEST BAY OF BENGAL IS VERY LIKELY TO MAINTAIN ITS CURRENT INTENSITY OF VERY SEVERE CYCLONIC STORM FOR A FEW HOURS WITH WIND SPEED 65 KNOTS GUSTING TO 75 KNOTS. THEREAFTER, IT IS EXPECTED TO WEAKEN GRADUALLY WHILE MOVING NORTHEASTWARD TOWARDS BANGLADESH COAST UNDER THE INFLUENCE OF HIGH VERTICAL WIND SHEAR IN ASSOCIATION WITH THE UPPER AIR TROUGH IN WESTERLY WITH EMBEDDED JET STREAM OVER THE REGION. IT IS VERY LIKELY TO MOVE NEARLY NORTH-NORTHEASTWARDS AND CROSS BANGLADESH COAST BETWEEN KHEPUPARA AND CHITTAGONG AROUND 1200 UTC OF 25TH OCTOBER AS A **CYCLONIC STORM** WITH WIND SPEED OF 65-75 GUSTING TO 85 KMPH (40 GUSTING TO 50 KNOTS).

(M.SHARMA)
SCIENTIST-D
RSMC, NEW DELHI



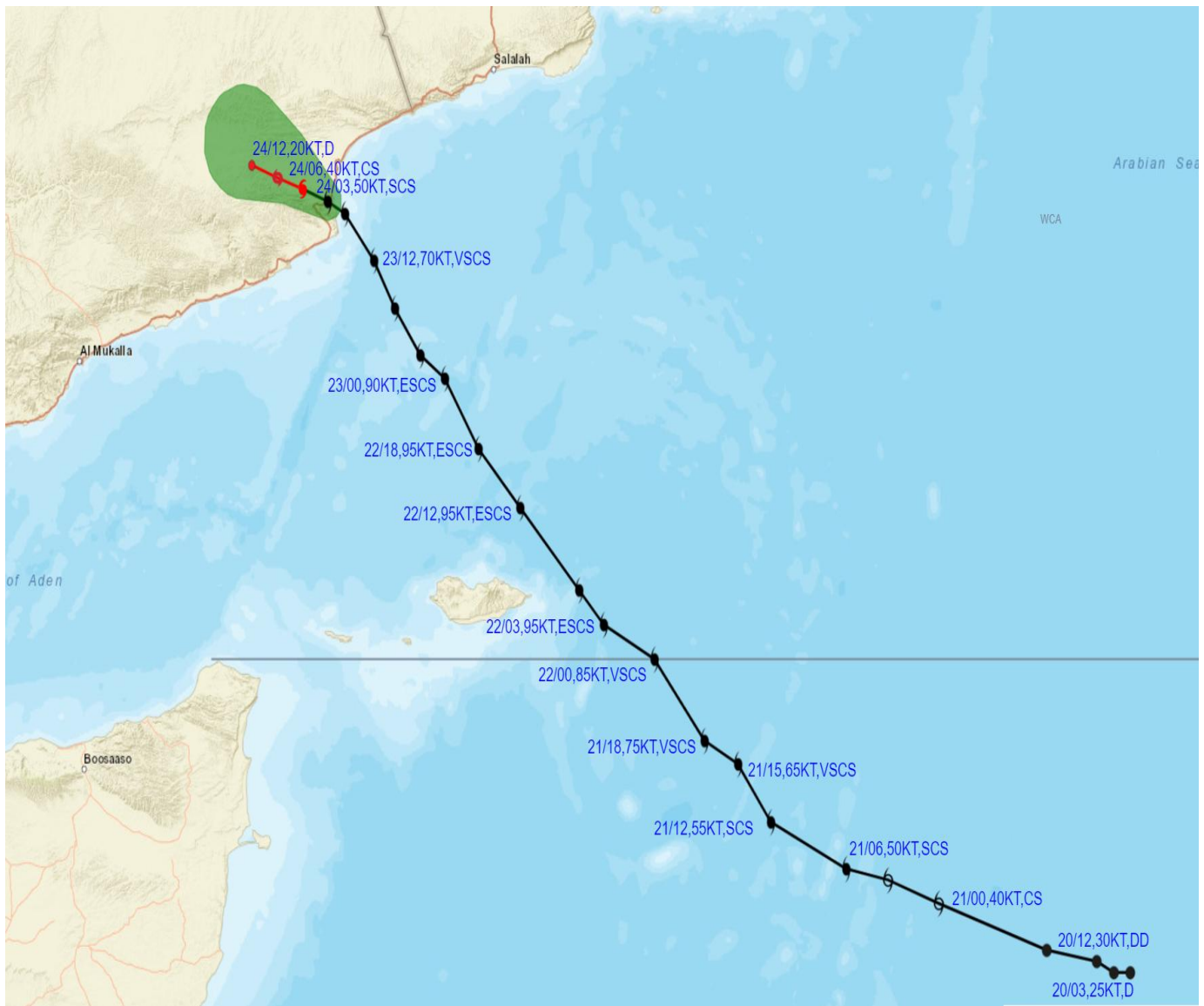
382

934

IMD, DELHI



OBSERVED AND FORECAST TRACK ALONGWITH CONE OF UNCERTAINTY OF SEVERE CYCLONIC STORM "TEJ" OVER COASTAL YEMEN BASED ON 0300 UTC (0830 IST) OF 24TH OCTOBER 2023.



DATE/TIME IN UTC

IST=UTC + 0530

L: LOW PRESSURE AREA

WML: WELL MARKED LOW PRESSURE AREA

D: DEPRESSION (17-27 KT)

DD: DEEP DEPRESSION (28-33 KT)

CS: CYCLONIC STORM (34-47 KT)

SCS: SEVERE CYCLONIC STORM (48-63KT)

VSCS: VERY SEVERE CYCLONIC STORM (64-89 KT)

ESCS: EXTREMELY SEVERE CYCLONIC STORM (90-119 KT)

SuCS: SUPER CYCLONIC STORM (\geq 120 KT)

● LESS THAN 34 KT

○ 34-47 KT

⊗ \geq 48 KT

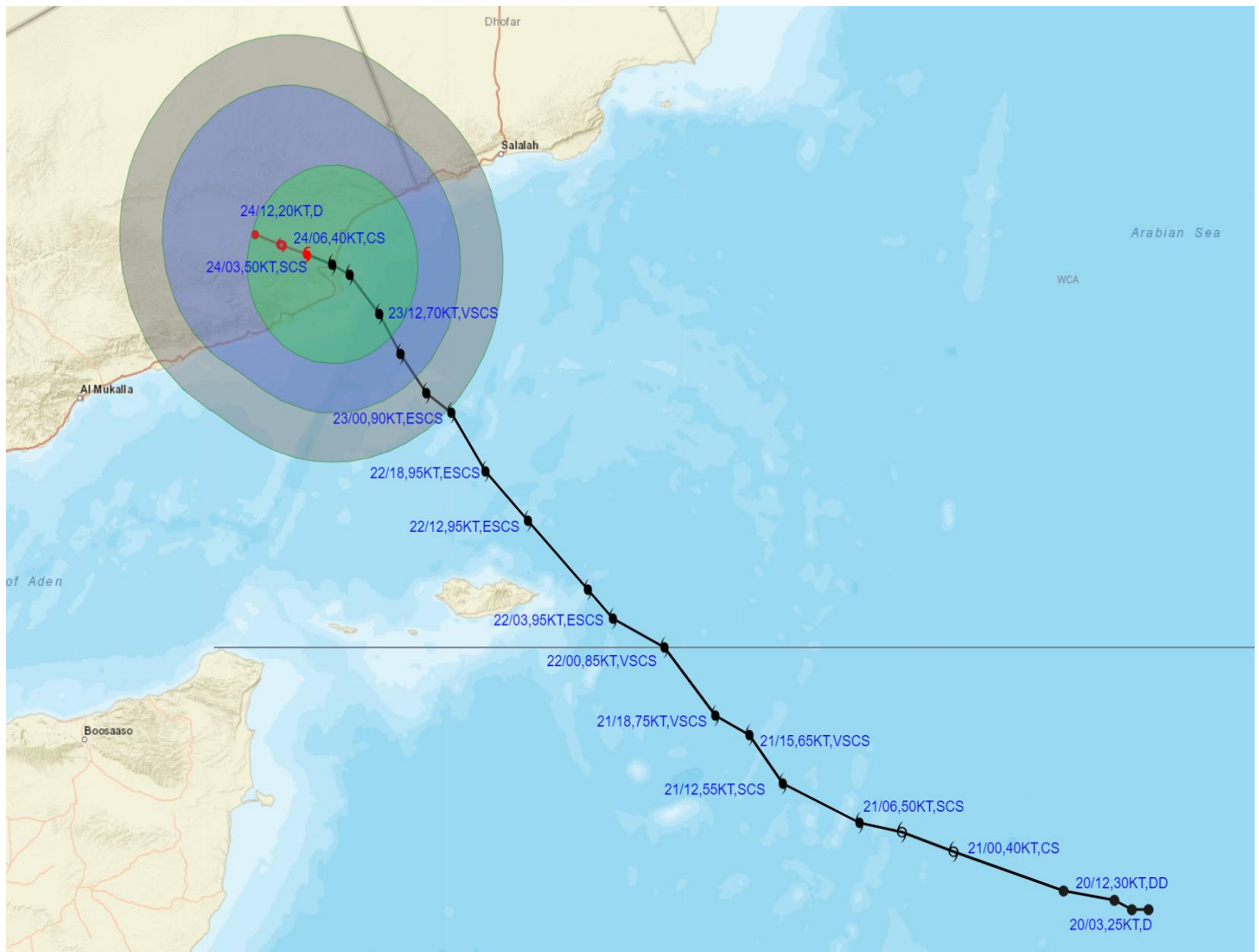
█ OBSERVED TRACK

█ FORECAST TRACK

▲ CONE OF UNCERTAINTY



OBSERVED AND FORECAST TRACK ALONGWITH QUADRANT WIND DISTRIBUTION OF SEVERE CYCLONIC STORM "TEJ" OVER COASTAL YEMEN BASED ON 0300 UTC (0830 IST) OF 24TH OCTOBER 2023.



DATE/TIME IN UTC
 IST=UTC + 0530
 L: LOW PRESSURE AREA
 WML: WELL MARKED LOW PRESSURE AREA
 D: DEPRESSION (17-27 KT)
 DD: DEEP DEPRESSION (28-33 KT)
 CS: CYCLONIC STORM (34-47 KT)
 SCS: SEVERE CYCLONIC STORM (48-63KT)
 VSCS: VERY SEVERE CYCLONIC STORM (64-89 KT)
 ESCS: EXTREMELY SEVERE CYCLONIC STORM (90-119 KT)
 SuCS: SUPER CYCLONIC STORM (\geq 120 KT)

● LESS THAN 34 KT
 ⦿ 34-47 KT
 ⦿ \geq 48 KT
 — OBSERVED TRACK
 — FORECAST TRACK
 ▲ CONE OF UNCERTAINTY
 AREA OF MAXIMUM SUSTAINED WIND SPEED:
 ■ 28-33 KT (52-61 KMPH)
 ■ 34-49 KT (62-91 KMPH)
 ■ 50-63 KT (92-117 KMPH)
 ■ \geq 64 KT (\geq 118 KMPH)

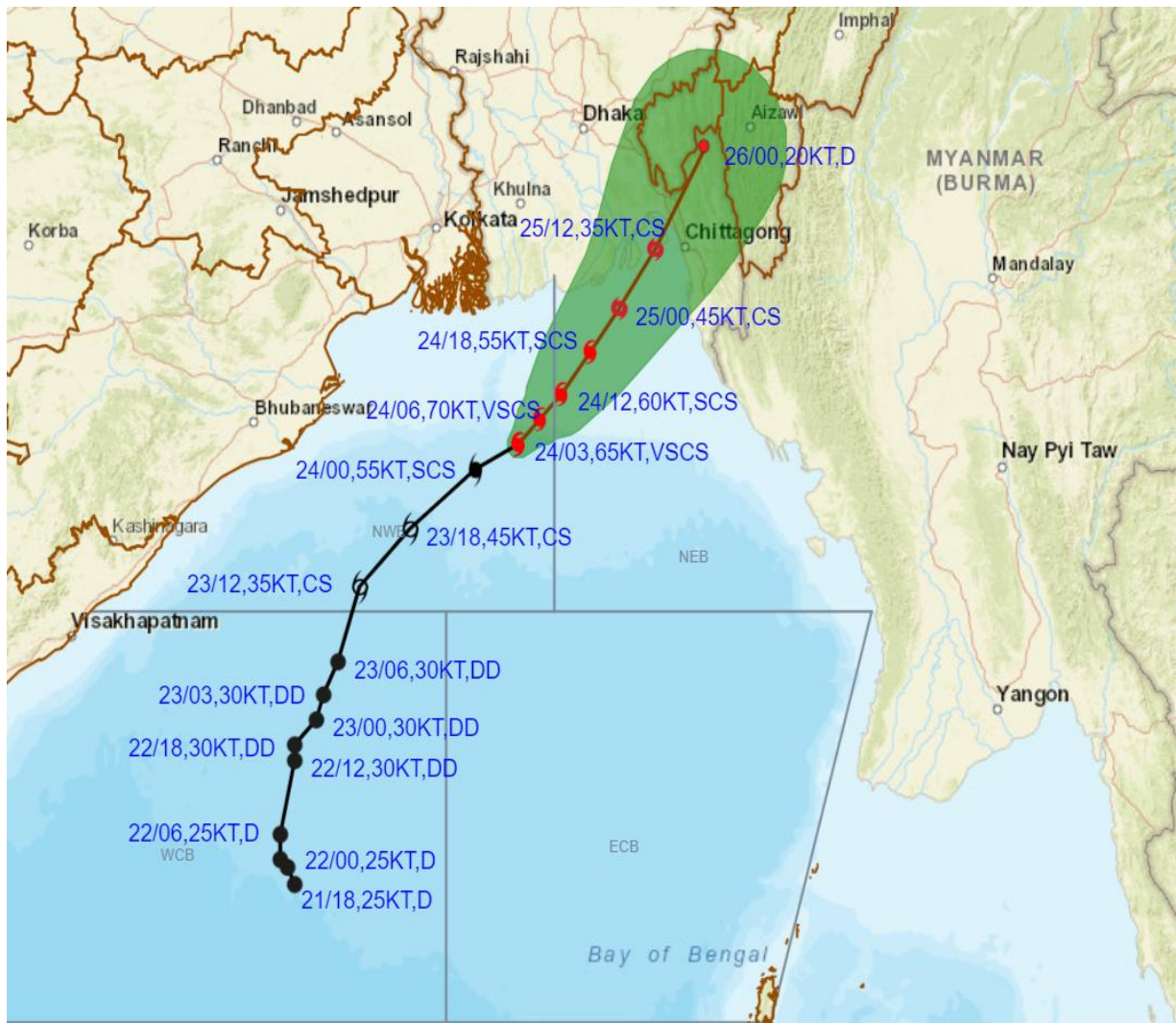
IMPACT OVER THE SEA

MSW (knot/kmph)	Impact	Action
28-33 (52-61)	Very rough seas	Total suspension of fishing operations
34-49 (62-91)	High to very high seas	Total suspension of fishing operations
50-63 (92-117)	Very high seas	Total suspension of fishing operations
\geq 64 (\geq 118)	Phenomenal	Total suspension of fishing operations

Cloud distribution: (a) Isolated: <25%, Scattered:25-50%, Broken: 51-75%, Solid:>75%, Convection Intensity: (a) Weak: Cloud Top Temperature (CTT) >-25°C, (b) Moderate: CTT: - 25°C to -40°C, (c) Intense: CTT: - 41°C to -70°C and (d) Very Intense: : Less than -70°C
 PROBABILITY OF CYCLOGENESIS (FORMATION OF DEPRESSION):NIL: 0%, LOW: 1-33%, , MODERATE: 34-66% AND HIGH: 67-100%
 This is a guidance Bulletin for WMO/ESCAP Panel Member countries. Visit respective National websites for Country specific Bulletins



OBSERVED AND FORECAST TRACK ALONGWITH CONE OF UNCERTAINTY OF VERY SEVERE CYCLONIC STORM "HAMOON" OVER NORTHWEST & ADJOINING NORTHEAST BAY OF BENGAL BASED ON 0300 UTC (0830 IST) OF 24TH OCTOBER 2023.



DATE/TIME IN UTC

IST=UTC + 0530

L: LOW PRESSURE AREA

WML: WELL MARKED LOW PRESSURE AREA

D: DEPRESSION (17-27 KT)

DD: DEEP DEPRESSION (28-33 KT)

CS: CYCLONIC STORM (34-47 KT)

SCS: SEVERE CYCLONIC STORM (48-63KT)

VSCS: VERY SEVERE CYCLONIC STORM (64-89 KT)

ESCS: EXTREMELY SEVERE CYCLONIC STORM (90-119 KT)

SuCS: SUPER CYCLONIC STORM (≥ 120 KT)

● LESS THAN 34 KT

○ 34-47 KT

○ ≥ 48 KT

— OBSERVED TRACK

— FORECAST TRACK

▲ CONE OF UNCERTAINTY

Forecast

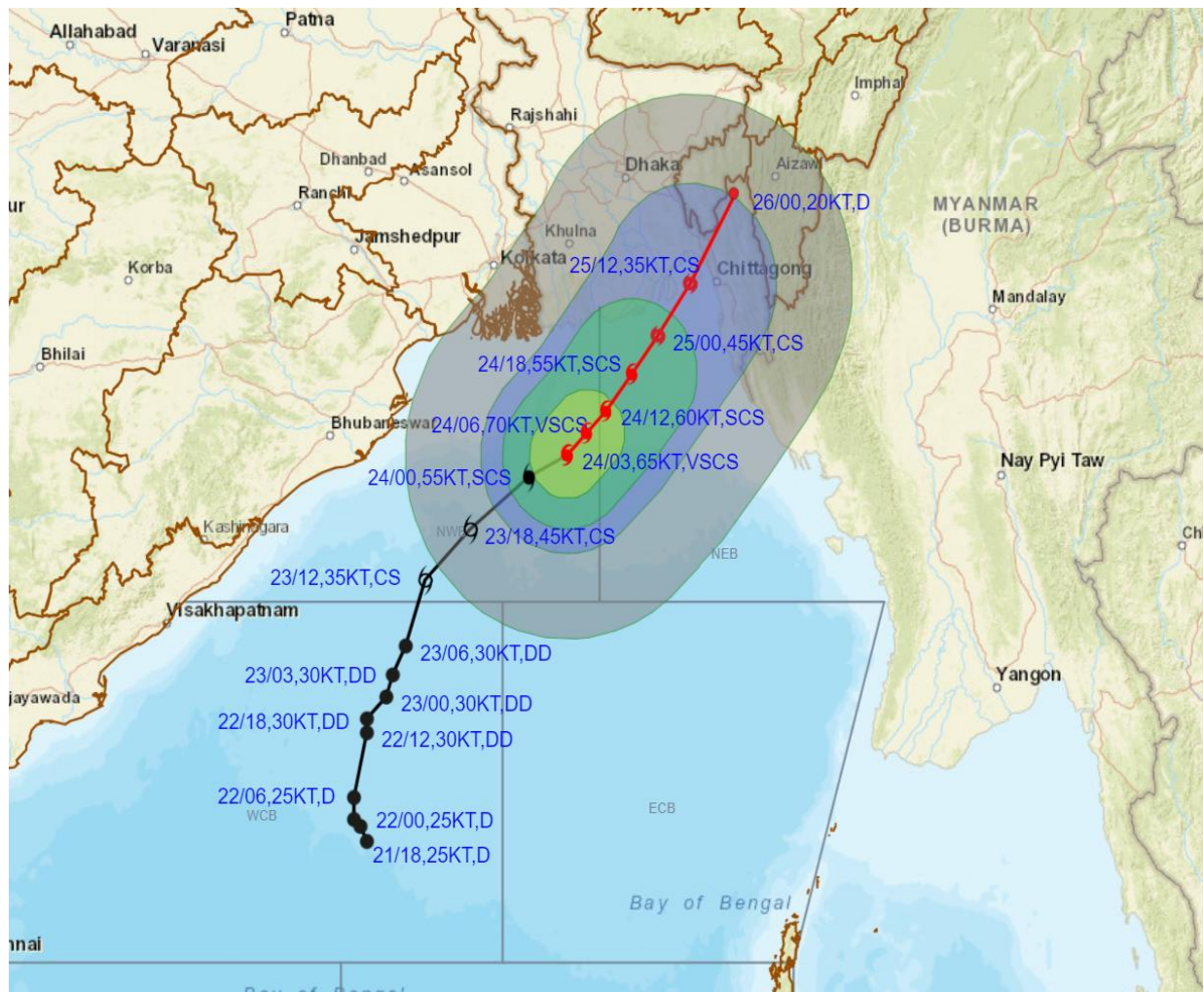
DISTANCE(KM) AND DIRECTION FROM STATIONS

Date and Time	PARADIP (CWR)	DIGHA	KHEPUPARA	CHITTAGONG (AMBAGAN)
25.10.23/0000	470, ENE	360, E	90, ESE	120, SW
25.10.23/1200	540, ENE	410, ENE	130, ENE	50, W
26.10.23/0000	660, ENE	520, ENE	260, NE	130, NNE

Cloud distribution: (a) Isolated: <25%, Scattered:25-50%, Broken: 51-75%, Solid:>75%, Convection Intensity: (a) Weak: Cloud Top Temperature (CTT) >-25°C, (b) Moderate: CTT: - 25°C to -40°C, (c) Intense: CTT: - 41°C to -70°C and (d) Very Intense: : Less than -70°C
PROBABILITY OF CYCLOGENESIS (FORMATION OF DEPRESSION):NIL: 0%, LOW: 1-33%, , MODERATE: 34-66% AND HIGH: 67-100%
 This is a guidance Bulletin for WMO/ESCAP Panel Member countries. Visit respective National websites for Country specific Bulletins



OBSERVED AND FORECAST TRACK ALONGWITH QUADRANT WIND DISTRIBUTION OF VERY SEVERE CYCLONIC STORM "HAMOON" OVER NORTHWEST & ADJOINING NORTHEASTBAY OF BENGAL BASED ON 0300 UTC (0830 IST) OF 24TH OCTOBER 2023.



DATE/TIME IN UTC
 IST=UTC + 0530
 L: LOW PRESSURE AREA
 WML: WELL MARKED LOW PRESSURE AREA
 D: DEPRESSION (17-27 KT)
 DD: DEEP DEPRESSION (28-33 KT)
 CS: CYCLONIC STORM (34-47 KT)
 SCS: SEVERE CYCLONIC STORM (48-63KT)
 VSCS: VERY SEVERE CYCLONIC STORM (64-89 KT)
 ESCS: EXTREMELY SEVERE CYCLONIC STORM (90-119 KT)
 SuCS: SUPER CYCLONIC STORM (≥120 KT)

● LESS THAN 34 KT
 ○ 34-47 KT
 ⊙ ≥ 48 KT
 — OBSERVED TRACK
 — FORECAST TRACK
 ○ CONE OF UNCERTAINTY
 AREA OF MAXIMUM SUSTAINED WIND SPEED:
 ■ 28-33 KT (52-61 KMPH)
 ■ 34-49 KT (62-91 KMPH)
 ■ 50-63 KT (92-117 KMPH)
 ■ ≥ 64 KT (≥118 KMPH)

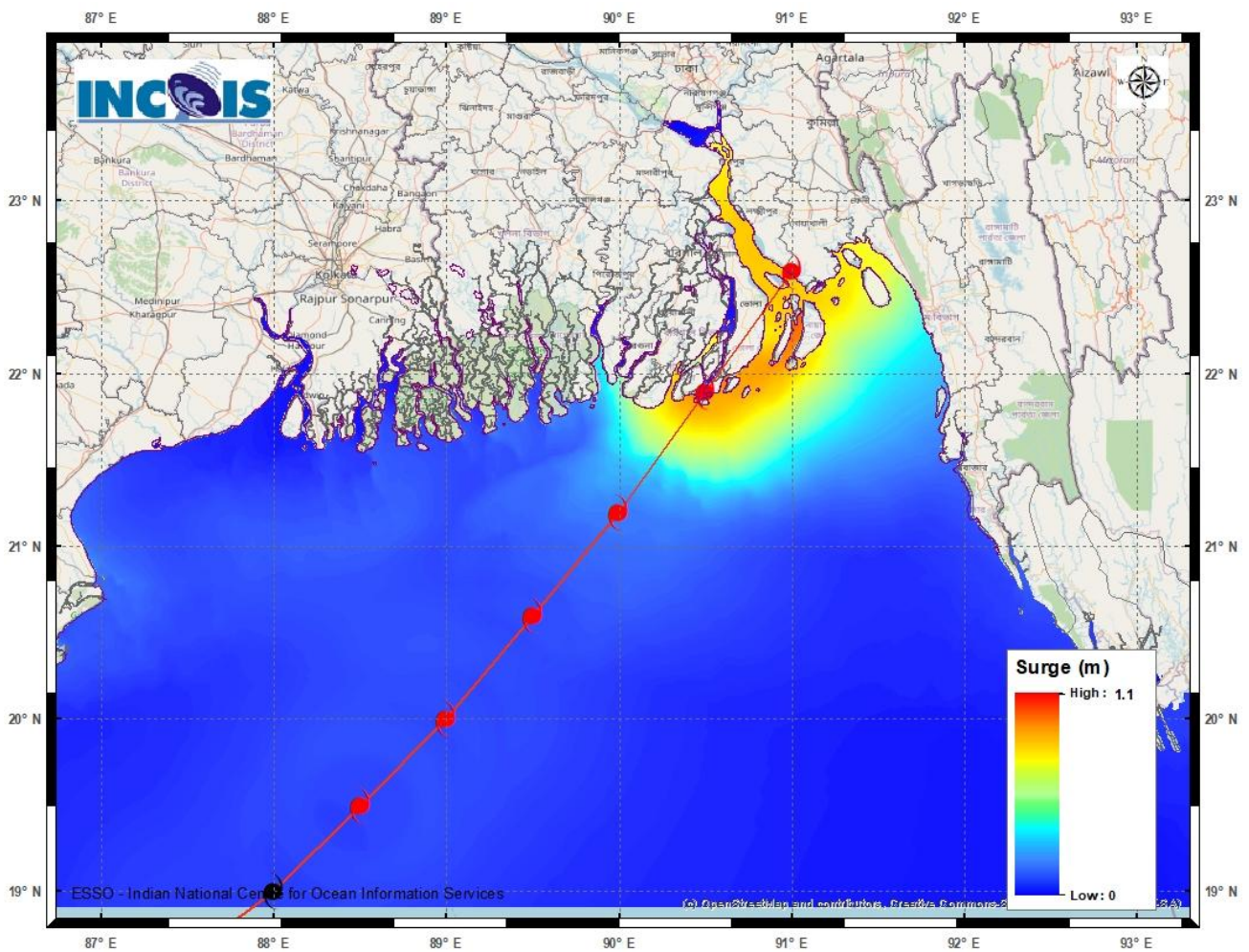
IMPACT OVER THE SEA

MSW (knot/kmph)	Impact	Action
28-33 (52-61)	Very rough seas	Total suspension of fishing operations
34-49 (62-91)	High to very high seas	Total suspension of fishing operations
50-63 (92-117)	Very high seas	Total suspension of fishing operations
≥ 64 (≥118)	Phenomenal	Total suspension of fishing operations

Cloud distribution: (a) Isolated: <25%, Scattered:25-50%, Broken: 51-75%, Solid:>75%, Convection Intensity: (a) Weak: Cloud Top Temperature (CTT) >-25°C, (b) Moderate: CTT: - 25°C to -40°C, (c) Intense: CTT: - 41°C to -70°C and (d) Very Intense: : Less than -70°C
 PROBABILITY OF CYCLOGENESIS (FORMATION OF DEPRESSION):NIL: 0%, LOW: 1-33%, , MODERATE: 34-66% AND HIGH: 67-100%
 This is a guidance Bulletin for WMO/ESCAP Panel Member countries. Visit respective National websites for Country specific Bulletins

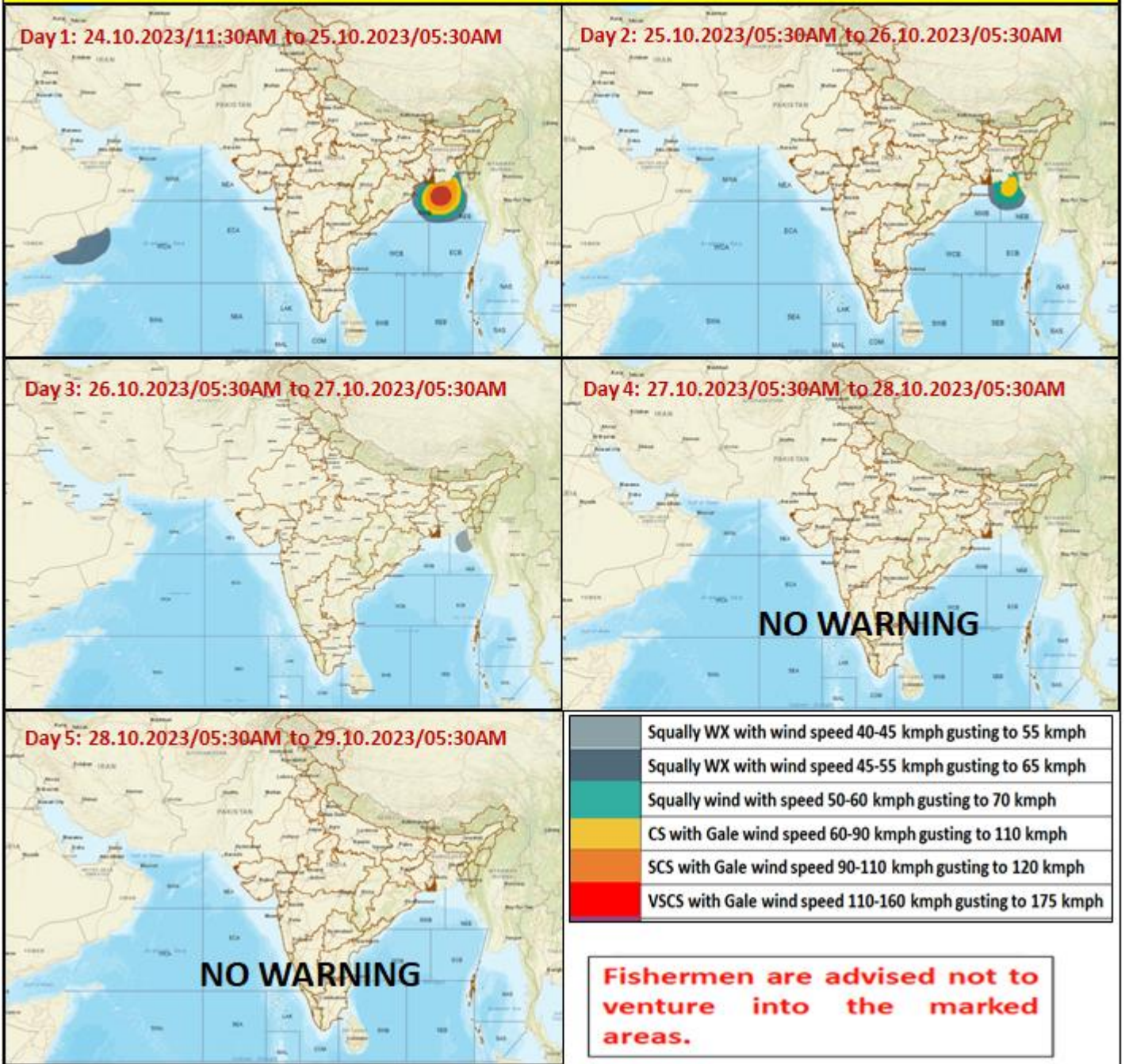
STORM SURGE GUIDANCE FOR BANGLADESH:

Storm surge of about 1.0-1.5 metre height above the astronomical tide is likely to inundate low lying areas between Khepupara and Chittagong (Bangladesh) around the time of landfall.



Cloud distribution: (a) Isolated: <25%, Scattered:25-50%, Broken: 51-75%, Solid:>75%, Convection Intensity: (a) Weak: Cloud Top Temperature (CTT) >-25°C, (b) Moderate: CTT: - 25°C to -40°C, (c) Intense: CTT: - 41°C to -70°C and (d) Very Intense: : Less than -70°C
 PROBABILITY OF CYCLOGENESIS (FORMATION OF DEPRESSION):NIL: 0%, LOW: 1-33%, , MODERATE: 34-66% AND HIGH: 67-100%
 This is a guidance Bulletin for WMO/ESCAP Panel Member countries. Visit respective National websites for Country specific Bulletins

Fishermen warning graphics



Cloud distribution: (a) Isolated: <25%, Scattered:25-50%, Broken: 51-75%, Solid:>75%, Convection Intensity: (a) Weak: Cloud Top Temperature (CTT) >-25°C, (b) Moderate: CTT: - 25°C to -40°C, (c) Intense: CTT: - 41°C to -70°C and (d) Very Intense: : Less than -70°C
 PROBABILITY OF CYCLOGENESIS (FORMATION OF DEPRESSION):NIL: 0%, LOW: 1-33%, , MODERATE: 34-66% AND HIGH: 67-100%
 This is a guidance Bulletin for WMO/ESCAP Panel Member countries. Visit respective National websites for Country specific Bulletins