



Government of India
Ministry of Earth Sciences



India Meteorological Department

Time of issue: 1530 hours IST

Dated: 11th January, 2026

Press Release-5

Sub: Depression over southwest Bay of Bengal off northeast Sri Lanka coast crossed Sri Lanka coast and became less marked

Yesterday's depression over southwest Bay of Bengal (BoB) off northeast Sri Lanka coast moved west-northwestwards and crossed northeast Sri Lanka coast close to Mullaittivu near latitude 9.3°N and longitude 80.8°E in the afternoon/evening (between 1530 & 1630 hrs IST) of same day, the 10th January, 2026, as a depression. Thereafter, it moved nearly westwards and weakened into a well marked low pressure area over north Sri Lanka and adjoining Gulf of Mannar in the same midnight (2330 hrs IST of 10th January). Further moving nearly westwards, it weakened into a low pressure area over south coastal Tamil Nadu and adjoining Gulf of Mannar in the early morning (0530 hrs IST) and became less marked in the morning (0830 hrs IST) of today, the 11th January 2026. However, the associated upper air cyclonic circulation lay over the same region at 0.9 km above mean sea level.

Heavy Rainfall Warnings:

Light to moderate rainfall at many places with heavy rainfall at isolated places is likely over Tamil Nadu-Puducherry & Karaikal on 11th and 12th January.

Wind Warnings and Sea condition:

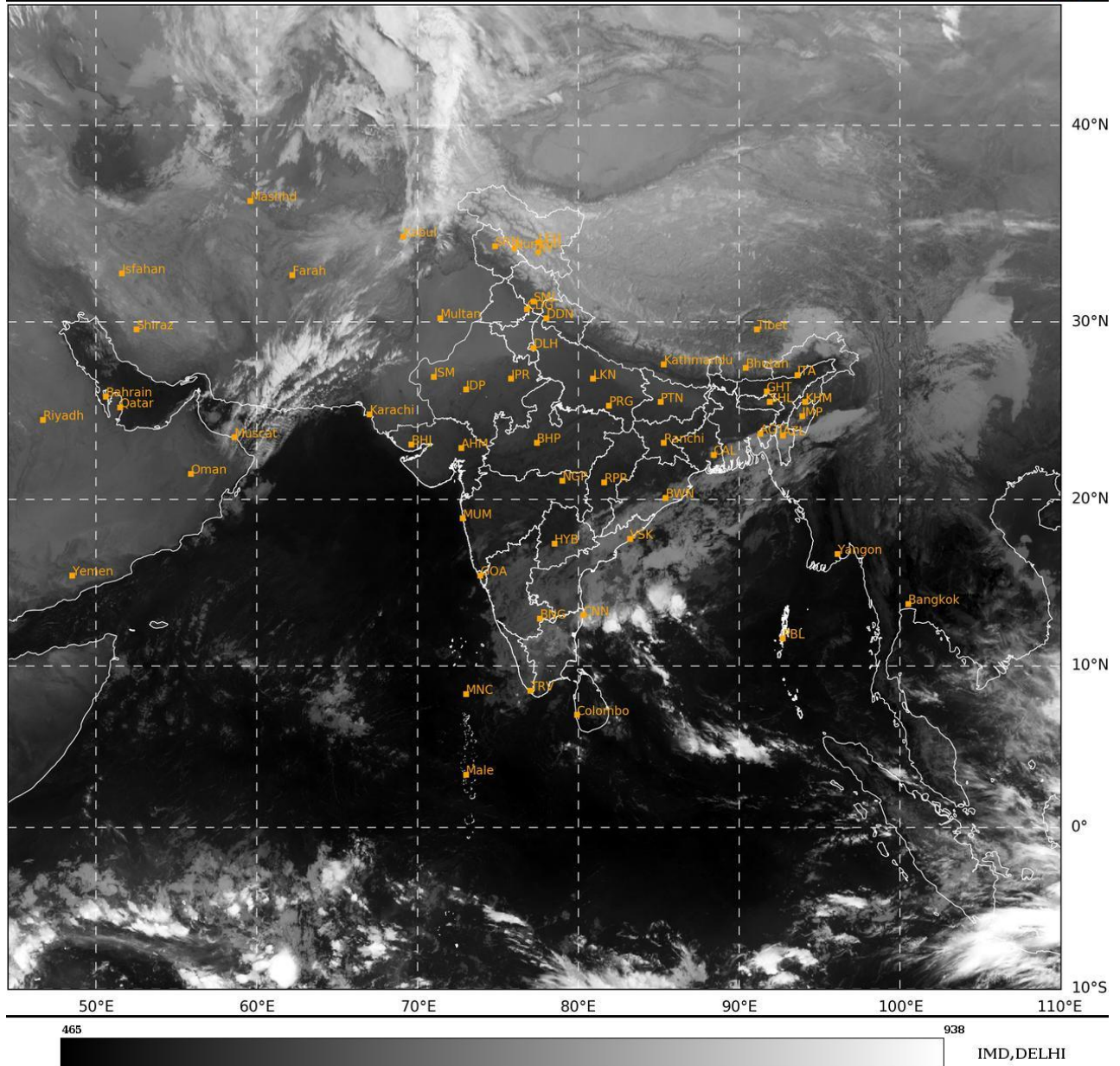
Squally weather with wind speed reaching 35 to 45 kmph gusting to 55 kmph with rough to moderate sea condition is likely to prevail over southwest Bay of Bengal, Gulf of Mannar & adjoining Comorin area and along and off Sri Lanka & South Tamil Nadu coast on 11th January.

The observed track of the system is presented in Fig. 1.

This is last Press Release in association with this system.

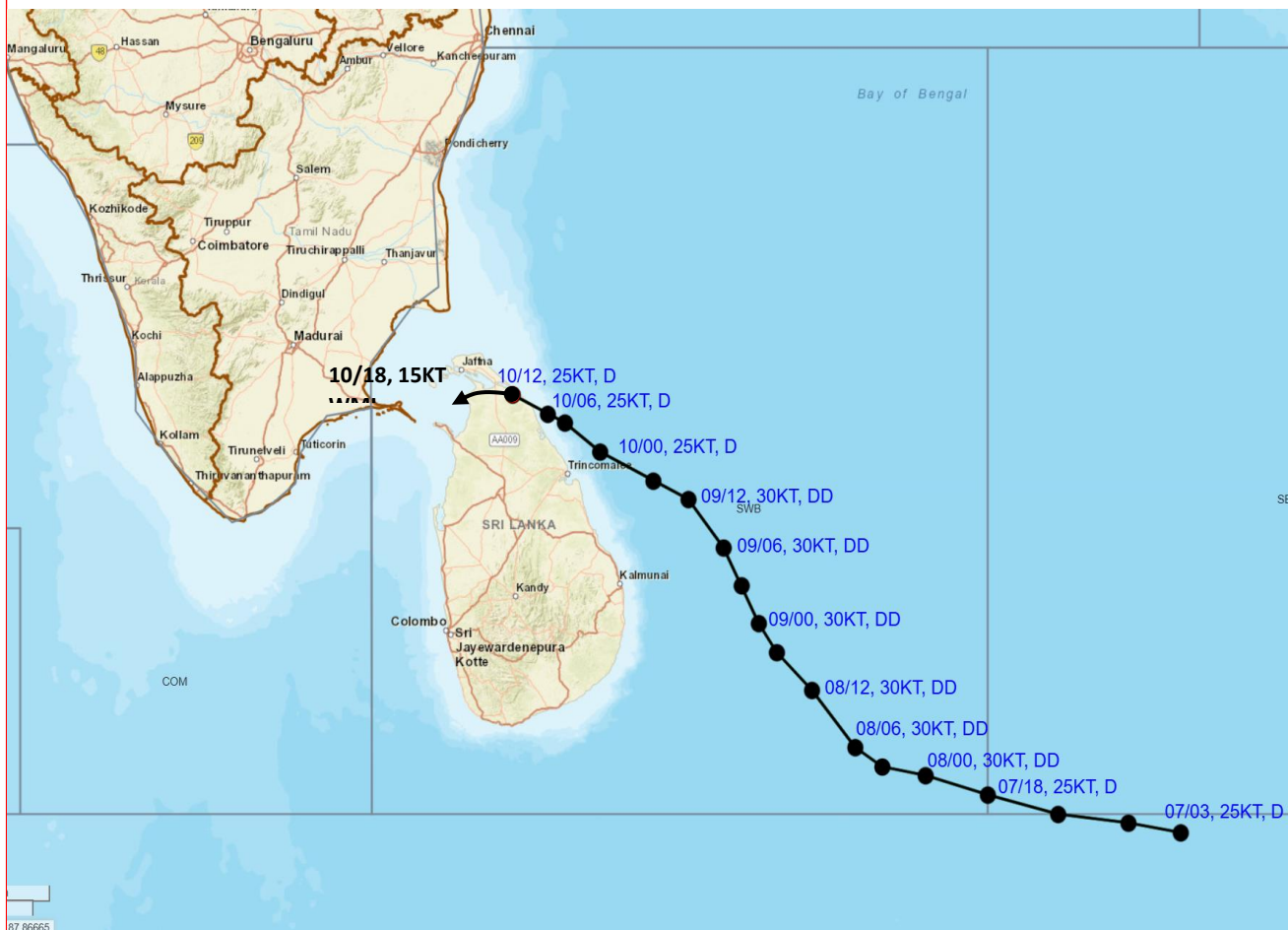
SAT : INSAT-3DR IMG
IMG_TIR1 10.8 um
L1C Mercator

11-01-2026/(0315 to 0342) GMT
11-01-2026/(0845 to 0912) IST





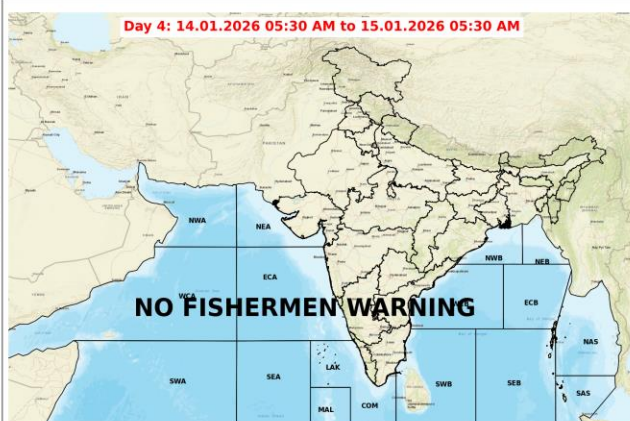
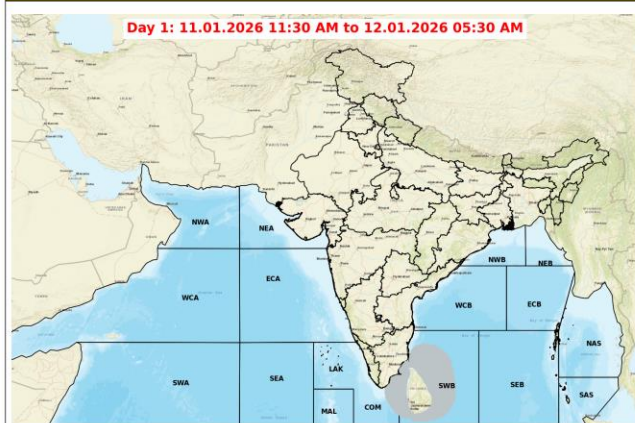
OBSERVED TRACK OF DEEP DEPRESSION OVER SOUTHWEST BAY OF BENGAL AND ADJOINING SRI LANKA COAST DURING 07-10 JANUARY 2026.



DATE/TIME IN UTC
IST=UTC + 0530
L: LOW PRESSURE AREA
WML: WELL MARKED LOW PRESSURE AREA
D: DEPRESSION (17-27 KT)
DD: DEEP DEPRESSION (28-33 KT)
CS: CYCLONIC STORM (34-47 KT)
SCS: SEVERE CYCLONIC STORM (48-63KT)
VSCS: VERY SEVERE CYCLONIC STORM (64-89 KT)
ESCS: EXTREMELY SEVERE CYCLONIC STORM (90-119 KT)
SuCS: SUPER CYCLONIC STORM (≥ 120 KT)

● LESS THAN 34 KT
○ 34-47 KT
○ ≥ 48 KT
— OBSERVED TRACK
— FORECAST TRACK
▲ CONE OF UNCERTAINTY

Fishermen Warning Graphics



Legend

Squally Weather with wind speed 35-45 kmph gusting to 55 kmph	Squally wind with speed 55-65 kmph gusting to 75 kmph
Squally Weather with wind speed 40-50 kmph gusting to 60 kmph	CS with Gale winds with speed 60-80 kmph gusting to 90 kmph
Squally Weather with wind speed 45-55 kmph gusting to 65 kmph	SCS with Gale wind speed 90-110 kmph gusting to 120 kmph
Squally wind with speed 45-55 kmph gusting to 65 kmph	VSCS with Gale wind speed 120-165 kmph gusting to 185 kmph
Squally wind with speed 50-60 kmph gusting to 70 kmph	ESCS with Gale wind speed 165-220 kmph gusting to 245 kmph

Fishermen are advised not to venture into the marked areas.