



Government of India
Ministry of Earth Sciences



India Meteorological Department

PRESS RELEASE-5

Time of issue: 1630 hours IST

Dated: 02-12-2025

Subject: Depression (Remnant of Cyclonic Storm Ditwah) over southwest Bay of Bengal and adjoining areas of westcentral Bay of Bengal, North Tamil Nadu, Puducherry & South Andhra Pradesh coasts

Yesterday's Deep Depression over southwest Bay of Bengal and adjoining areas of westcentral Bay of Bengal, North Tamil Nadu, Puducherry & South Andhra Pradesh coasts remained practically stationary till midnight (2330 hours IST) of 1st December. Thereafter, it gradually recurved southwestwards and weakened into a depression over the same region in the early morning (0530 hours IST) of today, the 2nd December. Thereafter, it moved slowly south-southwestwards with the speed of 8 kmph during past 6 hours and lay centered at 1130 hrs IST of today, the 02nd December 2025 over the same region, near latitude 12.5°N and longitude 80.4°E, about 60 km south-southeast of Chennai (India), 90 km northeast of Puducherry (India), 110 km northeast of Cuddalore (India) and 220 km south-southeast of Nellore (India). The minimum distance of the Centre of the depression from north Tamil Nadu-Puducherry coasts is about 25 km.

It is very likely to move slowly southwestwards towards the north Tamil Nadu-Puducherry coasts and maintain its intensity of depression till evening of today, the 2nd December. Thereafter, while moving towards the coast it is very likely to weaken into a Well-marked low-pressure area during subsequent 12 hours.

The system is being monitored by the Doppler Weather Radars (DWR) at Chennai and Sriharikota.

Warnings:

(i) Rainfall Warning:

- ❖ **Tamil Nadu & Puducherry:** Light to moderate rainfall at most places with **heavy to very heavy rainfall at isolated places** over North Coastal Tamil Nadu is very likely on 2nd December and **heavy rainfall** at isolated places on 03rd December, 2025.
- ❖ **South Coastal Andhra Pradesh & Rayalaseema:** Light to moderate rainfall at most places with **heavy rainfall** at isolated places is very likely on 2nd December, 2025.
- ❖ **Kerala:** Light to moderate rainfall at most places with **heavy rainfall** at isolated places is very likely on 2nd and 3rd December, 2025.

(ii) Wind Warning:

(a) Southwest and adjoining westcentral Bay of Bengal and along & off north Tamil Nadu, Puducherry and South Andhra Pradesh Coasts

Squally wind speed reaching 45-55 gusting to 65 kmph is very likely to prevail till evening of today, the 2nd December and gradually decrease thereafter becoming 35-45 gusting to 55 kmph by 3rd morning.

(b) Along & off south Tamil Nadu coast

Squally wind speed reaching 40-50 gusting to 60 kmph is very likely to prevail till evening of today, the 2nd December and gradually decrease thereafter becoming 35-45 gusting to 55 kmph by 3rd morning.

(iii) Sea Condition:

(a) Southwest and adjoining westcentral Bay of Bengal and along & off north Tamil Nadu, Puducherry and South Andhra Pradesh Coasts:

Very Rough to Rough Sea conditions are likely to prevail till 3rd December morning and gradually improve thereafter.

(b) Along & off south Tamil Nadu coast

Very Rough to Rough Sea conditions are likely to prevail till 3rd December morning and gradually improve thereafter.

(iv) Fishermen Warning:

(a) Total suspension of fishing operations over southwest and adjoining westcentral Bay of Bengal and along & off Tamil Nadu-Puducherry and adjoining south Andhra Pradesh coasts till 3rd December morning.

(b) Those out at sea should avoid southwest and adjoining westcentral Bay of Bengal and along & off Tamil Nadu – Puducherry and adjoining south Andhra Pradesh coasts till 3rd December morning.

(v) Impact Expected and Action Suggested due to heavy rain and strong winds (coastal districts of north Tamil Nadu, Puducherry and south Andhra Pradesh) up to 2nd December evening

Impact Expected:

- ❖ Breaking of tree branches, uprooting of small trees. Damage to orchards, horticulture & floriculture, standing crops including banana, papaya and drumstick trees due to inundation, winds and sea spray.
- ❖ Damage to Kutcha roads and culverts.
- ❖ Inundation/ water logging in low-lying areas in coastal districts due to heavy rainfall and flash flood. Flooding of escape routes and damage to salt pans.
- ❖ Riverine flooding in some river catchments. Please refer advisories by Central Water Commission in this regard.
- ❖ Occasional reduction in visibility due to heavy rainfall.
- ❖ Disruption of traffic due to water logging.
- ❖ Localized Landslides/Mudslides.

Action suggested:

- ❖ Total suspension of fishing operations.
- ❖ People in affected areas to remain indoors.
- ❖ Take safe shelters; do not take shelter under trees, as there could be lightning.
- ❖ Movement in motor boats unsafe.
- ❖ Judicious regulation of offshore/onshore operations
- ❖ People are advised to keep a watch on the weather for worsening conditions and be ready to move to safer places accordingly.
- ❖ Tourism and recreational activities to be regulated.
- ❖ Surface transport and helicopter services to be regulated.

Realized Rainfall:

Tamil Nadu, Puducherry & Karaikal reported light to moderate rainfall at most places with heavy to very heavy rainfall at a few places and extremely heavy rainfall at isolated places.

Coastal Andhra Pradesh & Yanam and Rayalaseema reported light to moderate rainfall at many places with heavy rainfall at isolated places.

Details are given in **Annexure-1**

Kindly visit www.rsmcnewdelhi.imd.gov.in and www.mausam.imd.gov.in for updates on the system.

Next Message will be issued at 1430 hrs IST of tomorrow, the 3rd December, 2025.

The accumulated rainfall (cm) during past 24 hours recorded at 0830 hours IST of 2nd December, 2025:

Tamil Nadu, Puducherry & Karaikal: Ennore Zone 1 (Chennai) 26, Parrys (Chennai) 25, Ice House (Chennai) 22, Ponneri (Tiruvallur) 21; Manali New Town (Chennai) 21, Ennore AWS (Tiruvallur), Perambur (Chennai), Chennai Collectorate Bu (Chennai) 20 Each; Dgp Office (Chennai), Chennai(n) (Chennai), Red Hills (Tiruvallur) 18 Each; Gummidipoondi (Tiruvallur), Ayanavaram Taluk Office (Chennai), Cd Hospital Tondaipet (Chennai) 17 Each; Puzhal ARG (Tiruvallur) 16; Cholavaram (Tiruvallur), Mgr Nagar (Chennai) 14 Each; Anna University (Chennai) 13; Anna Uty ARG (Chennai), Sholinganallur (Chennai) 11 Each; Chennai AP (Chennai), Sivakasi (Virudhunagar), Hindusthan University (Chengalpattu), Alandur (Chennai), Avadi (Tiruvallur) 9 Each; Taramani ARG (Chennai) 8; Kolapakkam ARG (Chengalpattu), Ambathur (Chennai) 7 Each; Satyabama Uty ARG (Chengalpattu), Poonamalle ARG (Tiruvallur) 6 Each; Kelambakkam (Chengalpattu), Poonamallee (Tiruvallur), Tiruvallur (Tiruvallur), Thamaraipakkam (Tiruvallur), Jaya Engg College AWS (Tiruvallur) 5 Each; Koratur (Tiruvallur) 4;

Coastal Andhra Pradesh & Yanam: Nellore (Spsr Nellore) 5;

Rayalaseema: Sullurpeta (Tirupati), Tada (Tirupati) 5 Each; Venkatagiri (Tirupati), Gudur (Tirupati), Satyavedu (Tirupati), Thottambedu (Tirupati) 4 Each.

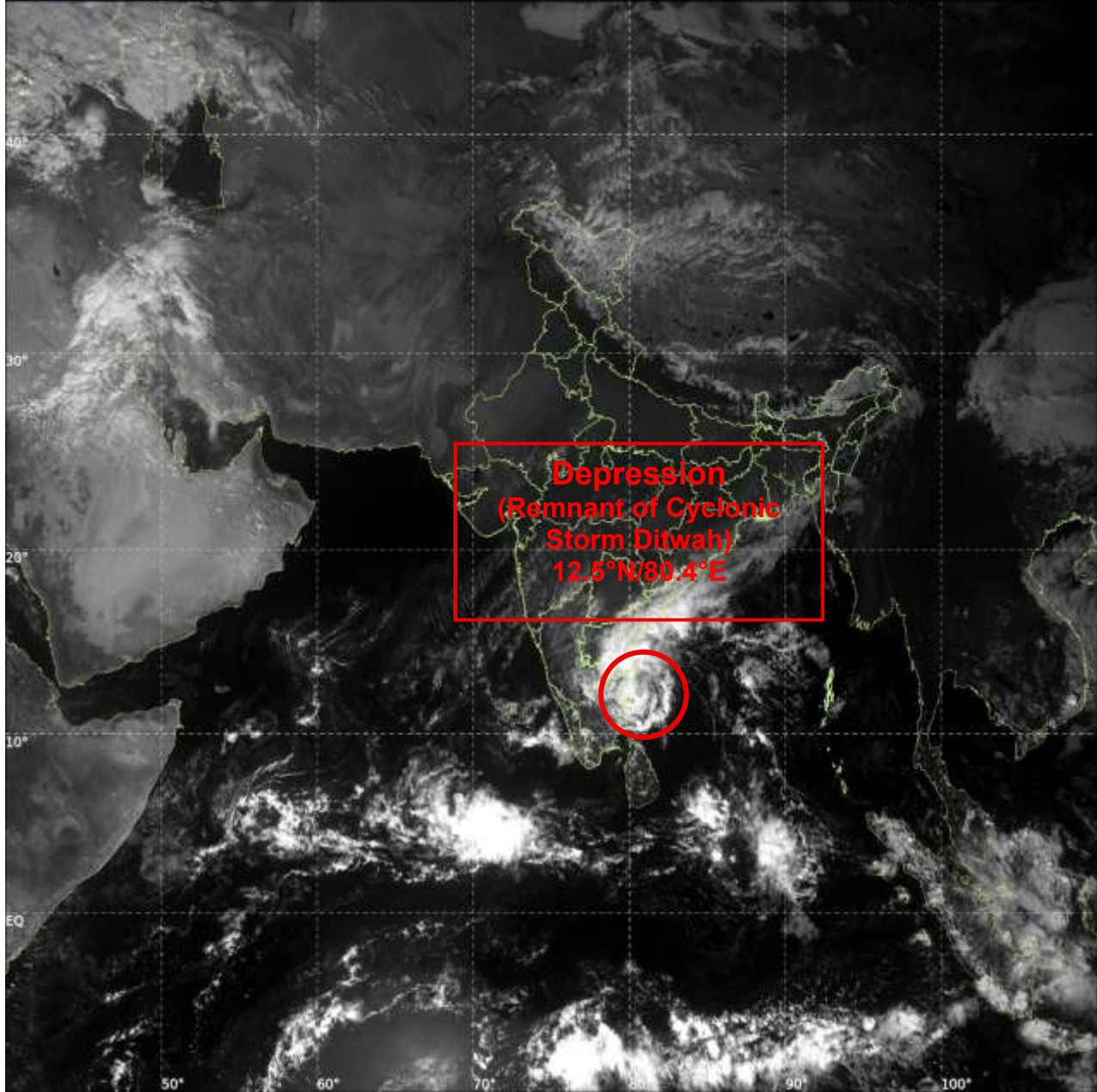
N.B.: Heavy rainfall (7-11 cm); Very Heavy rainfall (12-20 cm) and Extremely Heavy rainfall (>20 cm)



INSAT-3DS IMG, Visible Count @ 0.65 μm
GMT:02-12-2025/(0830-0857) IST:02-12-2025/(1400-1427)
LIC MERCATOR (LINEAR STRETCH: 0.5%)

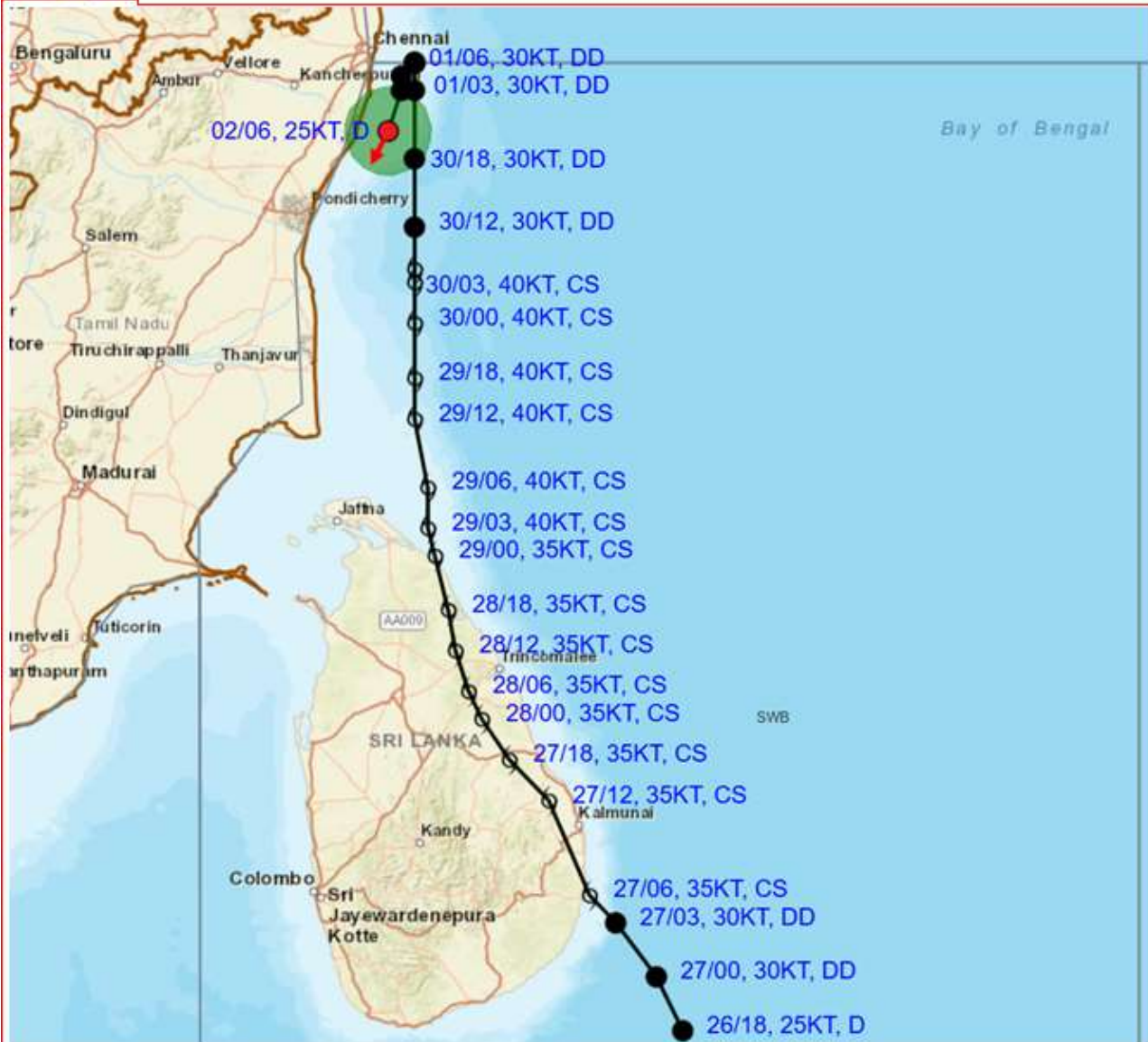
60

320





OBSERVED AND FORECAST TRACK OF DEPRESSION (REMNANT OF CYCLONIC STORM "DITWAH") OVER SOUTHWEST BAY OF BENGAL AND ADJOINING AREAS OF WESTCENTRAL BAY OF BENGAL, NORTH TAMILNADU, PUDUCHERRY & SOUTH ANDHRA PRADESH COASTS BASED ON 0600 UTC (1130 Hrs. IST) OF 2ND DECEMBER 2025

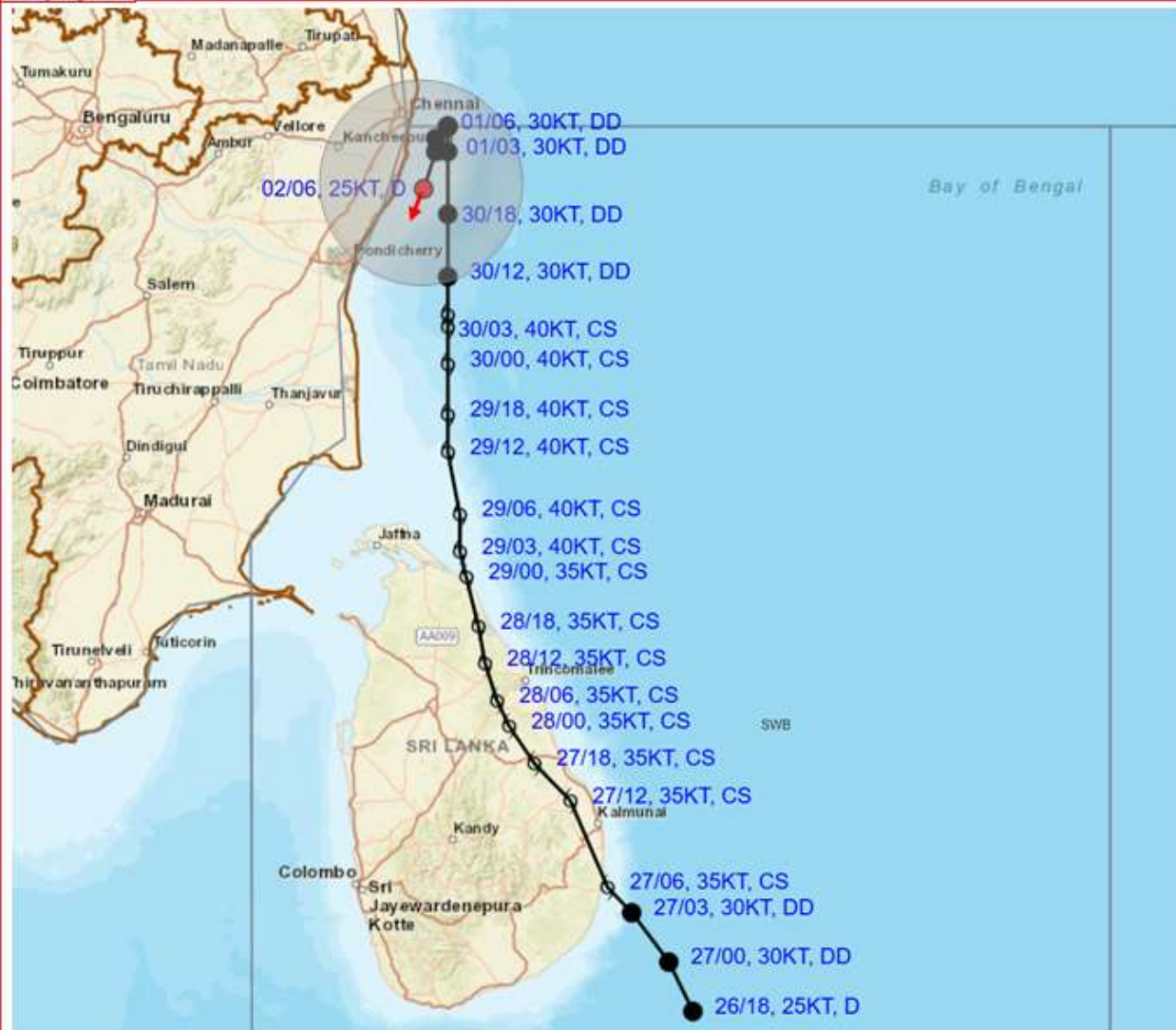


DATE/TIME IN UTC
 IST=UTC + 0530
 L: LOW PRESSURE AREA
 WML: WELL MARKED LOW PRESSURE AREA
 D: DEPRESSION (17-27 KT)
 DD: DEEP DEPRESSION (28-33 KT)
 CS: CYCLONIC STORM (34-47 KT)
 SCS: SEVERE CYCLONIC STORM (48-63KT)
 VSCS: VERY SEVERE CYCLONIC STORM (64-89 KT)
 ESCS: EXTREMELY SEVERE CYCLONIC STORM (90-119 KT)
 SuCS: SUPER CYCLONIC STORM (≥ 120 KT)

- LESS THAN 34 KT
- 34-47 KT
- ≥ 48 KT
- OBSERVED TRACK
- FORECAST TRACK
- CONE OF UNCERTAINTY



OBSERVED AND FORECAST TRACK ALONGWITH QUADRANT WIND DISTRIBUTION OF DEPRESSION (REMNANT OF CYCLONIC STORM "DITWAH") OVER SOUTHWEST BAY OF BENGAL AND ADJOINING AREAS OF WESTCENTRAL BAY OF BENGAL, NORTH TAMILNADU, PUDUCHERRY & SOUTH ANDHRA PRADESH COASTS BASED ON 0600 UTC (1130 Hrs. IST) OF 2ND DECEMBER 2025



DATE/TIME IN UTC

IST=UTC + 0530

L: LOW PRESSURE AREA

WML: WELL MARKED LOW PRESSURE AREA

D: DEPRESSION (17-27 KT)

DD: DEEP DEPRESSION (28-33 KT)

CS: CYCLONIC STORM (34-47 KT)

SCS: SEVERE CYCLONIC STORM (48-63KT)

VSCS: VERY SEVERE CYCLONIC STORM (64-89 KT)

ESCS: EXTREMELY SEVERE CYCLONIC STORM (90-119 KT)

SuCS: SUPER CYCLONIC STORM (≥ 120 KT)

● LESS THAN 34 KT

○ 34-47 KT

● ≥ 48 KT

— OBSERVED TRACK

— FORECAST TRACK

▲ CONE OF UNCERTAINTY

AREA OF MAXIMUM SUSTAINED WIND SPEED:

■ 25 KT (45-55 KMPH) |

■ 34-49 KT (62-91 KMPH)

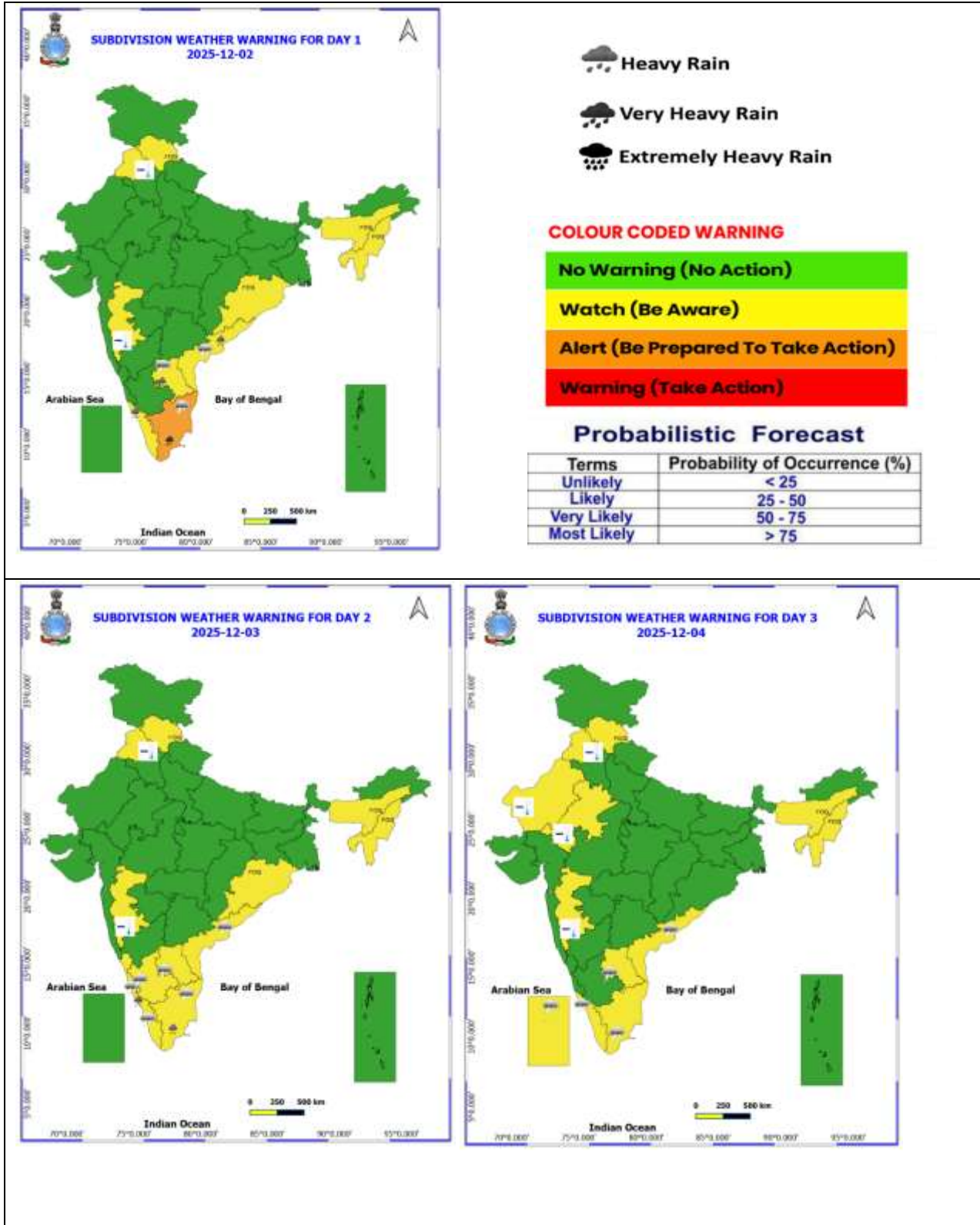
■ 50-63 KT (92-117 KMPH)

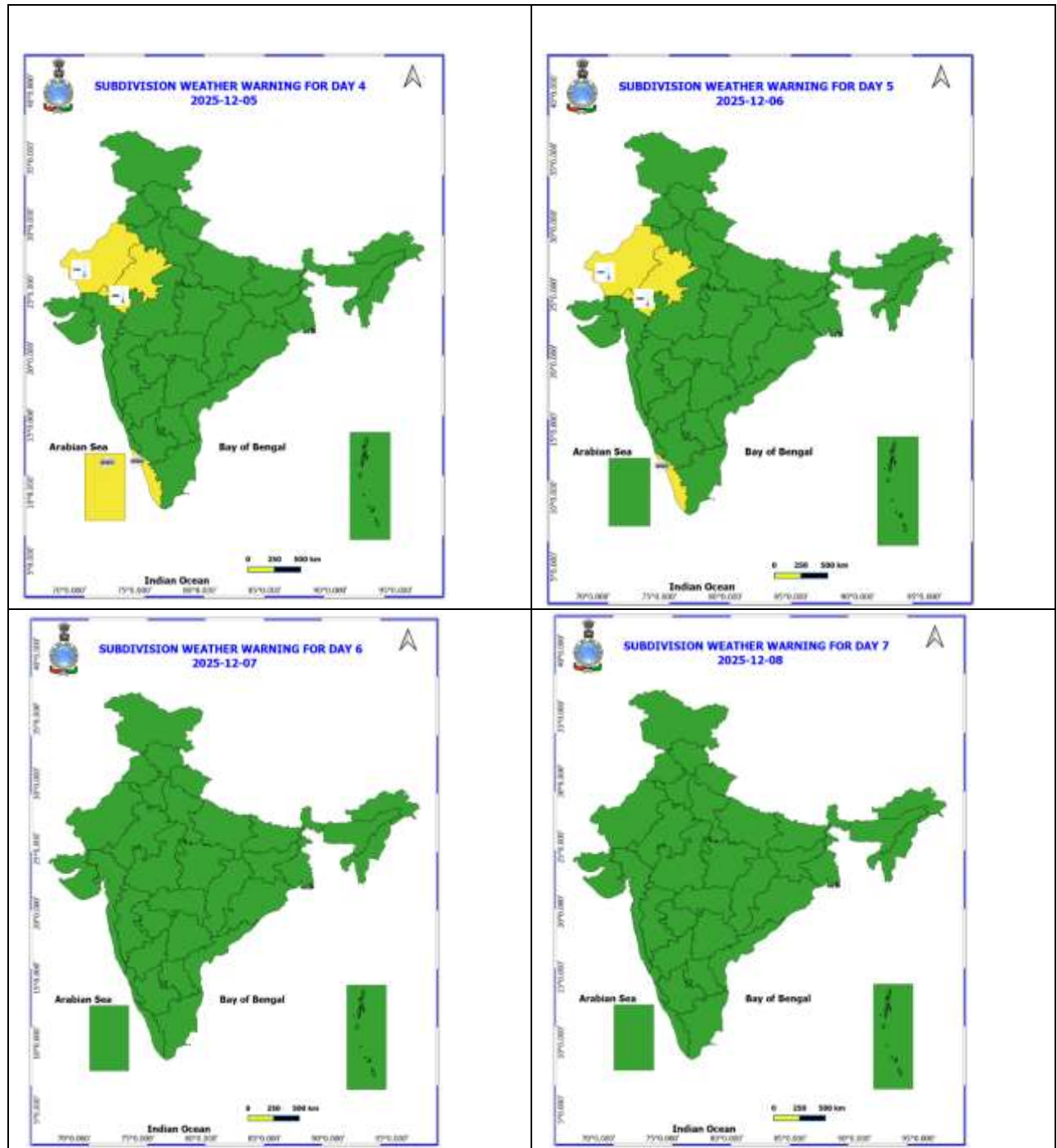
■ ≥ 64 KT (≥118 KMPH)

IMPACT OVER THE SEA

MSW (knot/kmph)	Impact	Action
28-33 (52-61)	Very rough seas	Total suspension of fishing operations
34-49 (62-91)	High to very high seas	Total suspension of fishing operations
50-63 (92-117)	Very high seas	Total suspension of fishing operations
≥ 64 (≥118)	Phenomenal	Total suspension of fishing operations

WEATHER WARNING GRAPHICS





- Action may be taken based on **ORANGE AND RED** COLOUR warnings.
- Vulnerable regions likely urban and hilly areas action may be initiated for heavy rainfall warning.
- As the lead period increases forecast accuracy decreases.



Fishermen Warning Graphics

