



Government of India
Ministry of Earth Sciences



India Meteorological Department

Time of issue: 1530 hours IST

Dated: 9th January, 2026

Press Release-3

Sub: Deep Depression over southwest Bay of Bengal

Yesterday's deep depression over southwest Bay of Bengal and adjoining East Equatorial Indian Ocean (EIO) moved north-northwestwards and lay centred at 1130 hours IST of today, the 9th January, 2026 over the southwest Bay of Bengal, near latitude 7.8°N and longitude 83.0°E, about 140 km east of Batticaloa (Sri Lanka), 160 km east-northeast of Pottuvil (Sri Lanka), 210 km east-southeast of Trincomalee (Sri Lanka), 200 km northeast of Hambantota (Sri Lanka), 490 km southeast of Karaikal (Puducherry) and 660 km south-southeast of Chennai (Tamil Nadu).

It is very likely to move northwestwards and cross north Sri Lanka coast between Trincomalee and Jaffna around noon/afternoon of 10th January, 2026.

Forecast track and intensity is given in Table below:

Date/Time (IST)	Position (Lat. °N/ long. °E)	Maximum sustained surface wind speed (kmph)	Category of cyclonic disturbance
09.01.26/1130	7.8/83.0	55-65 gusting to 75	Deep Depression
09.01.26/1730	8.2/82.8	55-65 gusting to 75	Deep Depression
09.01.26/2330	8.6/82.3	50-60 gusting to 70	Deep Depression
10.01.26/0530	8.9/81.7	45-55 gusting to 65	Depression
10.01.26/1130	9.2/81.0	40-50 gusting to 60	Depression
10.01.26/2330	9.1/79.9	30-40 gusting to 50	Well marked low pressure area

(i) Rainfall Warning:

❖ **Tamilnadu, Puducherry and Karaikal:** Light to moderate rainfall at most places with **heavy to very heavy rainfall** at isolated places is very likely over coastal Tamil Nadu on 9th and 10th January, 2026. Rainfall activity would gradually decrease with light to moderate rainfall at many places and **heavy rainfall** at isolated places is very likely over Tamil Nadu on 11th January, 2026.

(ii) Wind Warning:

(a) Southwest Bay of Bengal and adjoining areas of East Equatorial Indian Ocean:

Squally weather with wind speed reaching 55-65 gusting to 75 kmph is currently prevailing. It would continue to prevail till 9th evening. It would gradually decrease thereafter becoming 40-50 gusting to 60 kmph by 10th noon and 30-40 gusting to 50 kmph by 10th midnight.

(b) Southeast Bay of Bengal:

Squally weather with wind speed reaching 40-50 gusting to 60 kmph over adjoining areas of southeast Bay of Bengal till evening of 9th January and gradually decrease thereafter.

(c) Along & off Sri Lanka coast, Gulf of Mannar and adjoining Comorin Area:

Squally weather with wind speed reaching 50-60 gusting to 70 kmph is prevailing over the region. It would gradually decrease becoming 40-50 gusting to 60 kmph by 10th morning.

(d) Along & off Tamilnadu - Puducherry coasts

Squally weather with wind speed reaching 40 – 50 gusting to 60 kmph is very likely to prevail till 10th afternoon. It would gradually decrease thereafter.

Squally weather with wind speed reaching 35-45 gusting to 55 kmph is very likely to prevail along and off North Tamil Nadu & Puducherry coasts on 9th & 10th January and decrease thereafter.

(iii) Sea Condition:

- ❖ Sea condition is very likely to be rough to very rough over southwest Bay of Bengal & adjoining areas of East Equatorial Indian Ocean, Gulf of Mannar & adjoining Comorin area and along & off Sri Lanka coast on 09th & 10th January and improve gradually thereafter.
- ❖ Sea condition is very likely to be Rough to very rough along & off Tamilnadu-Puducherry coasts on 09th & 10th January and improve gradually thereafter.
- ❖ Sea condition is very likely to be rough to moderate over southeast Bay of Bengal till evening of 9th January and improve gradually thereafter.

(iv) Fishermen Warning:

- ❖ Fishermen are advised not to venture into southwest Bay of Bengal & adjoining East Equatorial Indian Ocean, Gulf of Mannar and adjoining Comorin area and along & off Sri Lanka & Tamilnadu-Puducherry coasts on 09th and 10th.
- ❖ Fishermen are advised not to venture into adjoining areas of southeast Bay of Bengal till 9th January evening.

(v) Impact Expected over south coastal Tamilnadu and Karaikal due to heavy rainfall

- ❖ Localized Flooding of roads, water logging in low lying areas and closure of underpasses mainly in urban areas of the above region.
- ❖ Occasional reduction in visibility due to heavy rainfall.
- ❖ Disruption of traffic in city areas and roadways due to water logging in roads and poor visibility due to heavy rain leading to increased travel time and incidents
- ❖ Likely disruption of marine and inland water transportation like small boats and trawlers.
- ❖ Damage to horticulture and standing crops in some areas due to inundation and wind.

(vi) Action Suggested for coastal Tamilnadu-Puducherry and Karaikal

- Judicious regulation of onshore/offshore, Port and maritime activities
- Judicious regulation of tourism activities in coastal areas.
- Judicious regulation of surface transports including railways and roadways.
- Avoid going to areas that face the water logging problems often.

Kindly visit www.mausam.imd.gov.in and www.rsmcnewdelhi.imd.gov.in for updates.

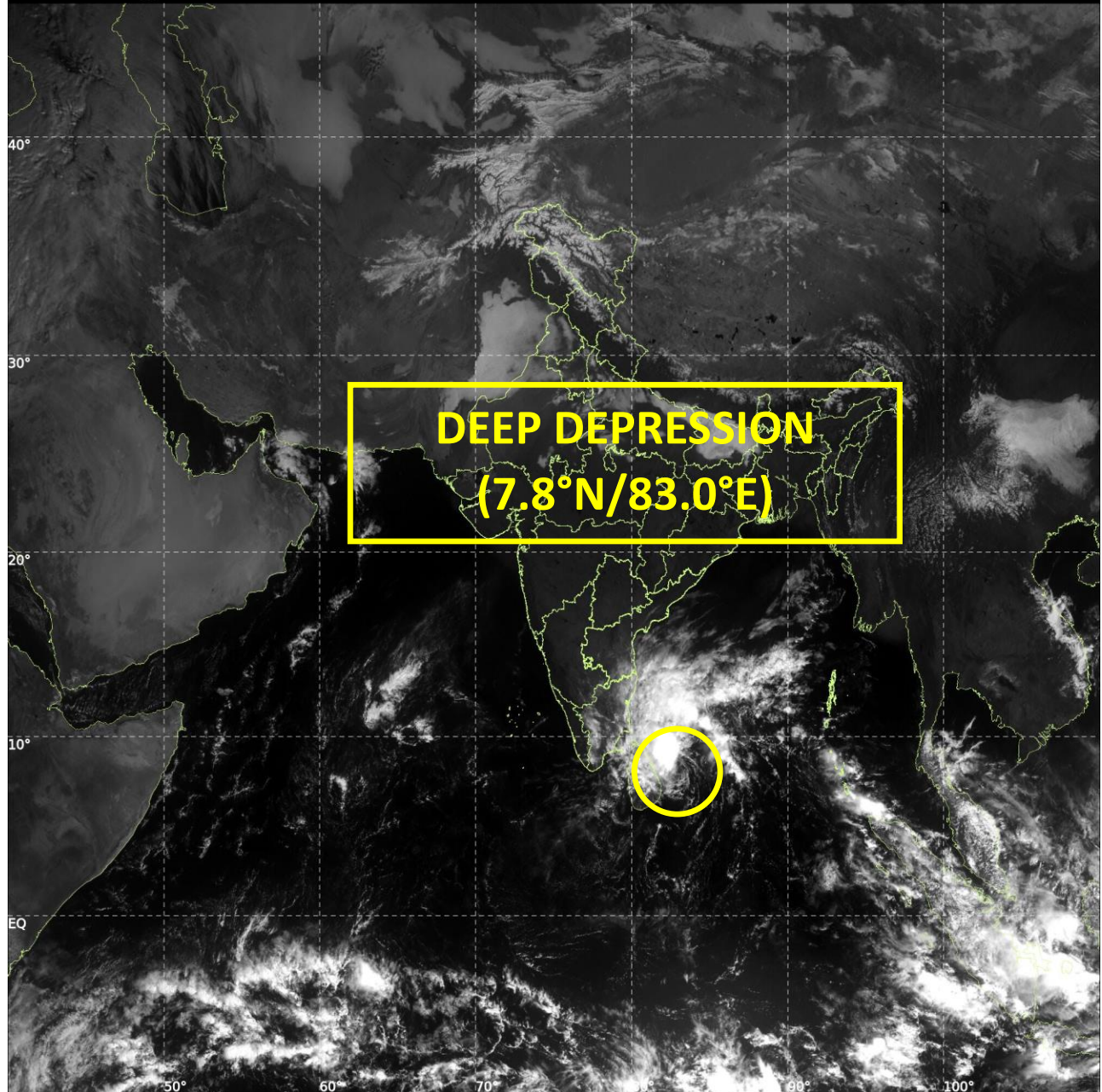
Next Press Release will be issued at 1430 hrs IST of tomorrow, the 10th January, 2026.



INSAT-3DS IMG, Visible Count @ 0.65 μm
GMT:09-01-2026/(0600-0627) IST:09-01-2026/(1130-1157)
L1C MERCATOR (LINEAR STRETCH: 0.5%)

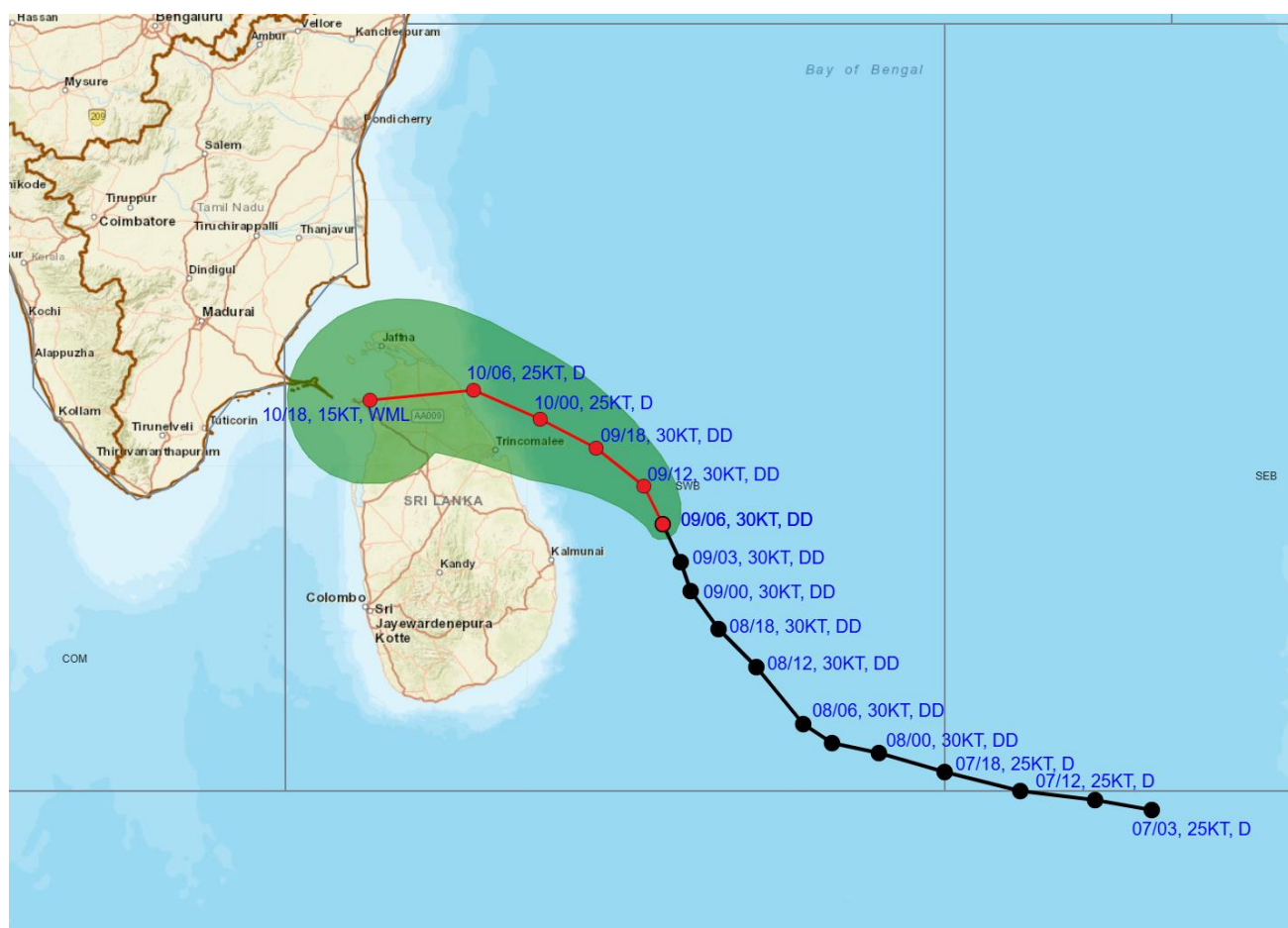
67

400





OBSERVED AND FORECAST TRACK ALONGWITH CONE OF UNCERTAINTY OF DEEP DEPRESSION OVER SOUTHWEST BAY OF BENGAL BASED ON 0600 UTC (1130 Hrs. IST) OF 9TH JANUARY 2026.



DATE/TIME IN UTC

IST=UTC + 0530

L: LOW PRESSURE AREA

WML: WELL MARKED LOW PRESSURE AREA

D: DEPRESSION (17-27 KT)

DD: DEEP DEPRESSION (28-33 KT)

CS: CYCLONIC STORM (34-47 KT)

SCS: SEVERE CYCLONIC STORM (48-63KT)

VSCS: VERY SEVERE CYCLONIC STORM (64-89 KT)

ESCS: EXTREMELY SEVERE CYCLONIC STORM (90-119 KT)

SuCS: SUPER CYCLONIC STORM ≥ 120 KT)



LESS THAN 34 KT



34-47 KT



≥ 48 KT



OBSERVED TRACK



FORECAST TRACK



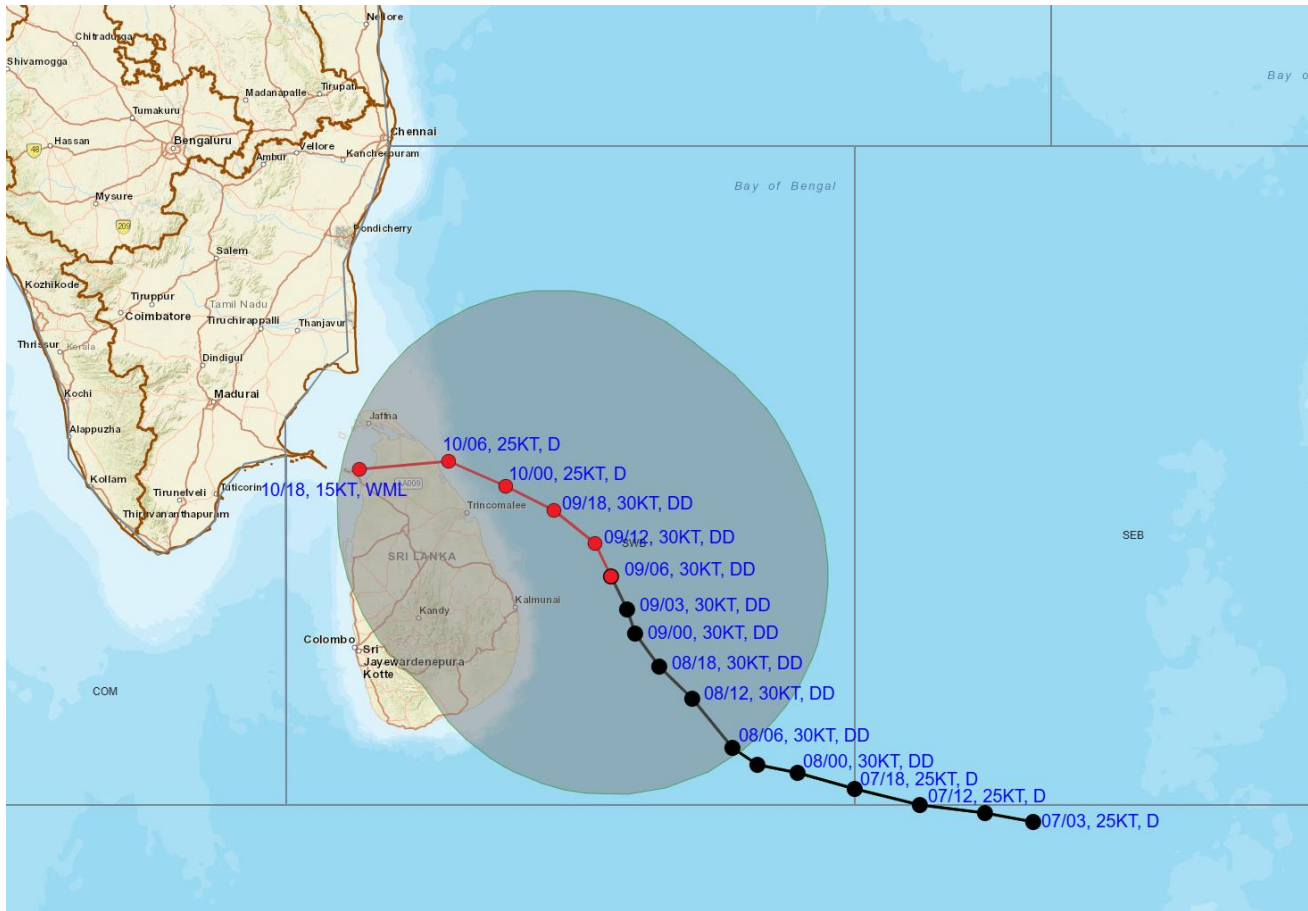
CONE OF UNCERTAINTY

Forecast distance (km) and direction of the centre from nearest 5 coastal stations

Forecast Date and Time	Lead Period	Lat	Lon	Station 1	Station 2	Station 3	Station 4	Station 5
09.01.26/0600	0	7.8	83.0	BATTICALOA (144,E)	POTTUVIL (164,NE)	TRINCOMALEE (212,ESE)	BADULLA (234,ESE)	BANDARAWELA (247,ESE)
09.01.26/1200	6	8.2	82.8	BATTICALOA (133,ESE)	TRINCOMALEE (176,ESE)	POTTUVIL (181,NE)	BADULLA (236,NE)	MULLAITTIVU 1) (248,ESE)
09.01.26/1800	12	8.6	82.3	TRINCOMALEE (116,E)	BATTICALOA (118,NE)	MULLAITTIVU 1) (179,ESE)	POTTUVIL (198,NNE)	VAVUNIYA (199,E)
10.01.26/0000	18	8.9	81.7	TRINCOMALEE (61,NE)	MULLAITTIVU 1) (105,ESE)	BATTICALOA (132,N)	VAVUNIYA (133,E)	ANURADHAPURA (155,ESE)
10.01.26/0600	24	9.2	81.0	MULLAITTIVU 1) (21,ESE)	TRINCOMALEE (74,NNW)	VAVUNIYA (74,NE)	ANURADHAPURA (116,NNE)	JAFFNA (119,ESE)
10.01.26/1800	36	9.1	79.9	MANNAR (13,N)	JAFFNA (63,SSW)	VAVUNIYA (77,WNW)	PAMBAN (78,ESE)	KANKASANTURAI 1) (80,SSW)



OBSERVED AND FORECAST TRACK ALONGWITH QUADRANT WIND DISTRIBUTION OF DEEP DEPRESSION OVER SOUTHWEST BAY OF BENGAL BASED ON 0600 UTC (1130 Hrs. IST) OF 9TH JANUARY 2026.



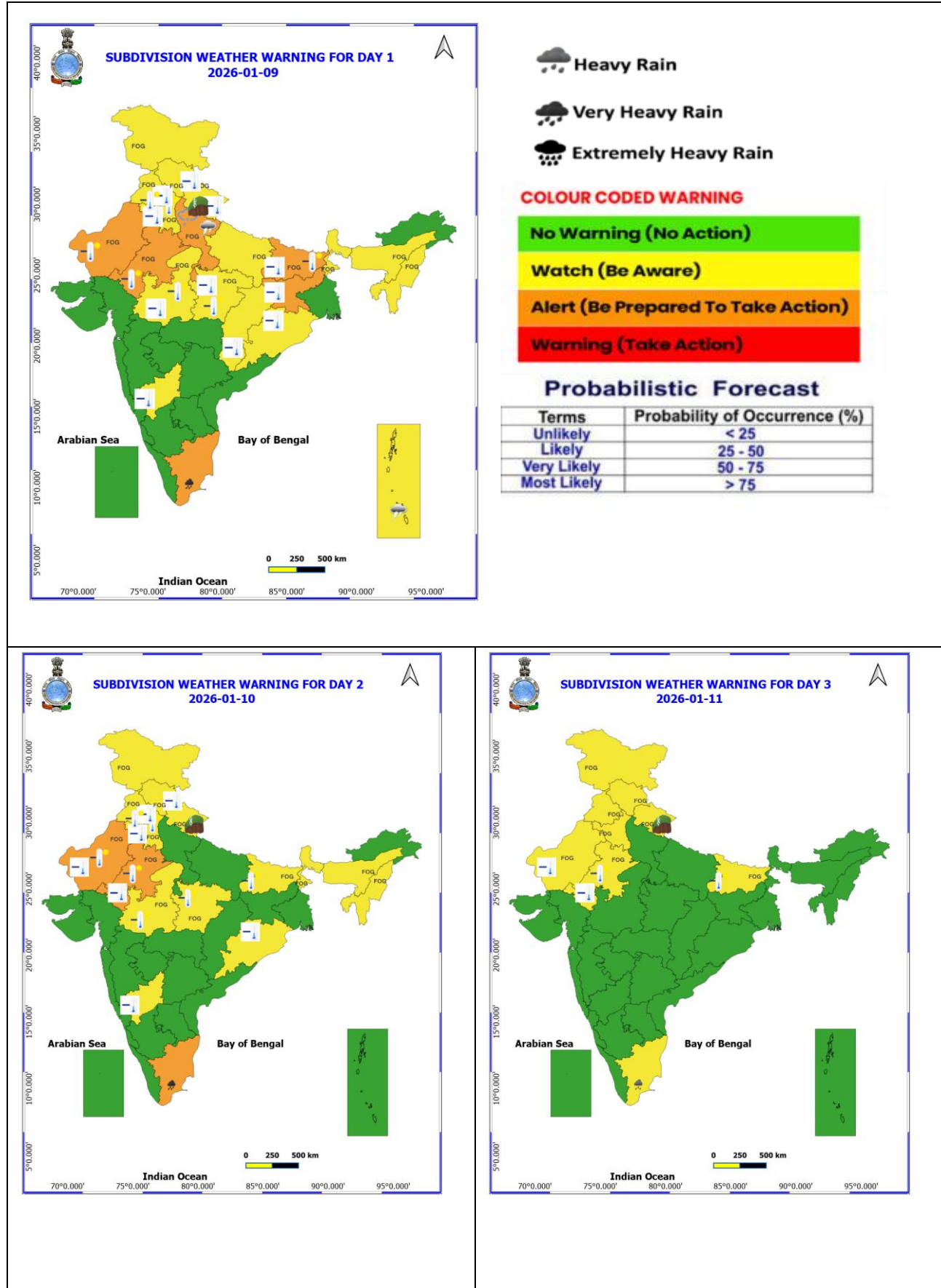
DATE/TIME IN UTC
 IST=UTC + 0530
 L: LOW PRESSURE AREA
 WML: WELL MARKED LOW PRESSURE AREA
 D: DEPRESSION (17-27 KT)
 DD: DEEP DEPRESSION (28-33 KT)
 CS: CYCLONIC STORM (34-47 KT)
 SCS: SEVERE CYCLONIC STORM (48-63 KT)
 VSCS: VERY SEVERE CYCLONIC STORM (64-89 KT)
 ESCS: EXTREMELY SEVERE CYCLONIC STORM (90-119 KT)
 SuCS: SUPER CYCLONIC STORM (≥ 120 KT)

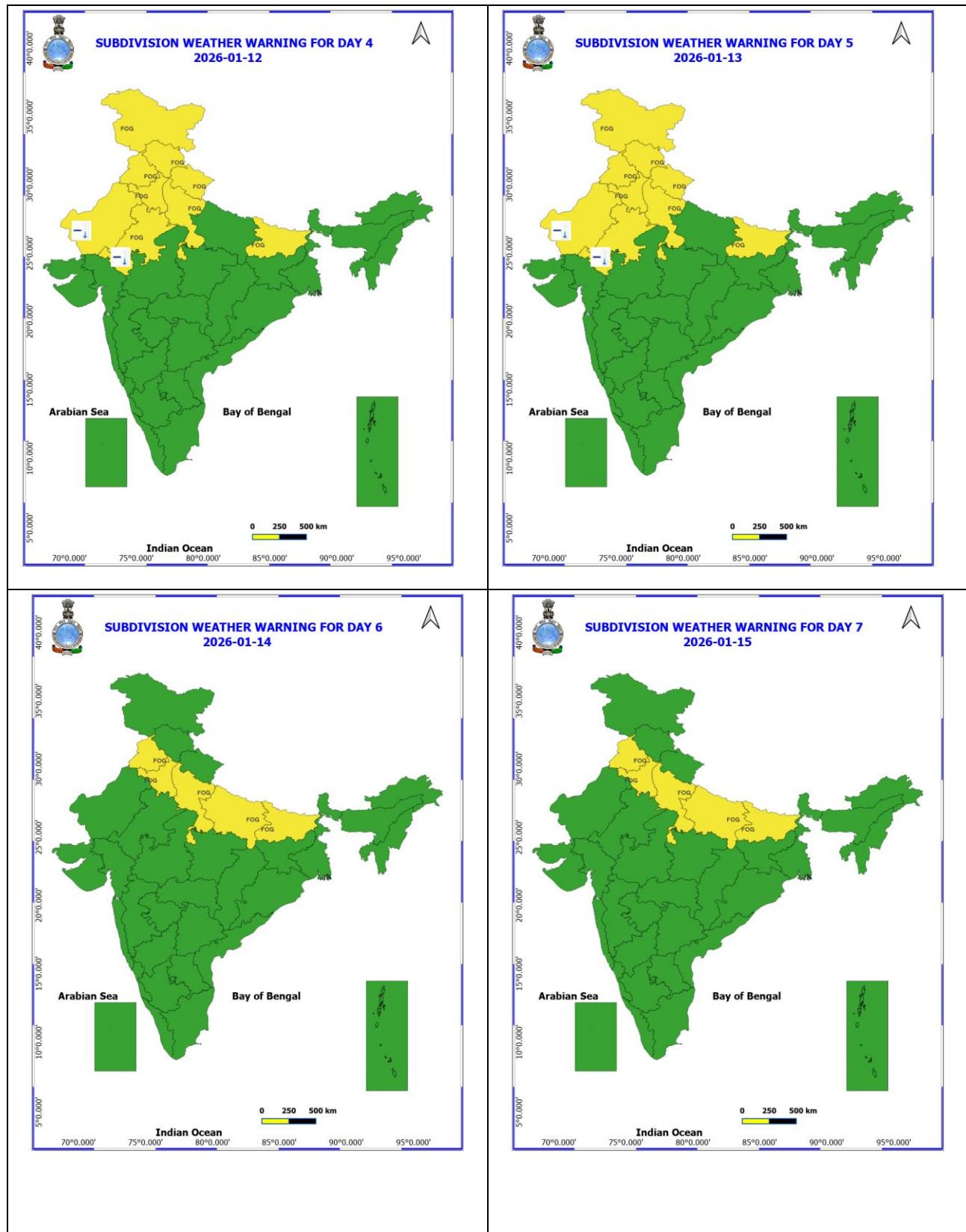
● LESS THAN 34 KT
 ○ 34-47 KT
 ● ≥ 48 KT
 — OBSERVED TRACK
 — FORECAST TRACK
 ▲ CONE OF UNCERTAINTY
 AREA OF MAXIMUM SUSTAINED WIND SPEED:
 ■ 28-33 KT (52-61 KMPH)
 ■ 34-49 KT (62-91 KMPH)
 ■ 50-63 KT (92-117 KMPH)
 ■ ≥ 64 KT (≥ 118 KMPH)

IMPACT OVER THE SEA

MSW (knot/kmph)	Impact	Action
28-33 (52-61)	Very rough seas	Total suspension of fishing operations
34-49 (62-91)	High to very high seas	Total suspension of fishing operations
50-63 (92-117)	Very high seas	Total suspension of fishing operations
≥ 64 (≥ 118)	Phenomenal	Total suspension of fishing operations

WARNING GRAPHICS

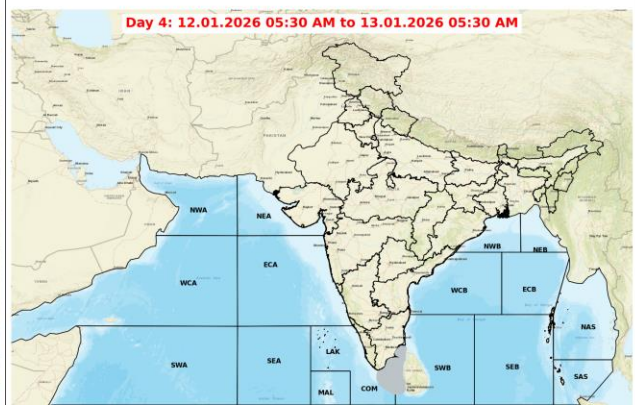
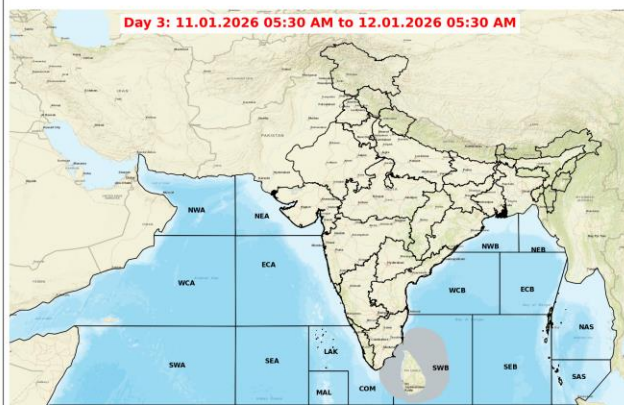
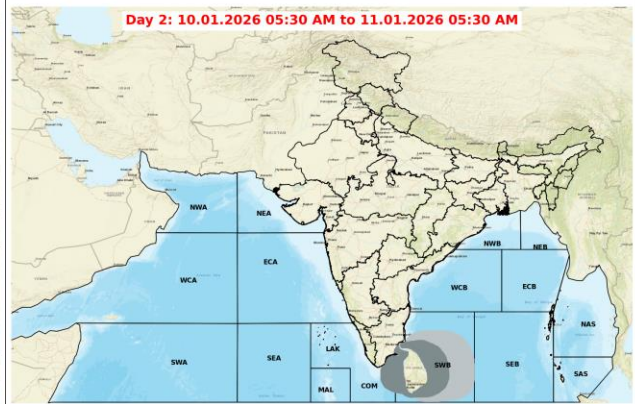
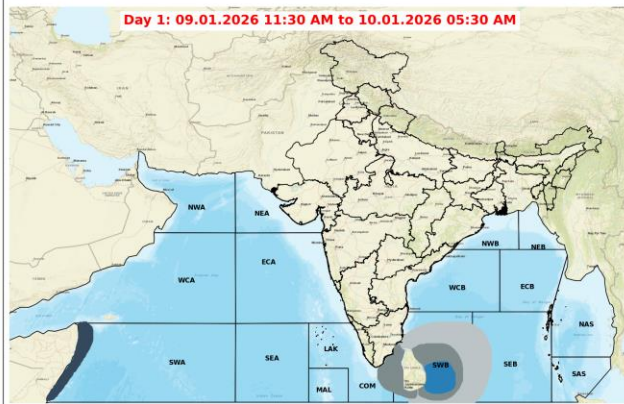




Action may be taken based on ORANGE AND RED COLOUR warnings.

- Vulnerable regions likely urban and hilly areas action may be initiated for heavy rainfall warning.
- As the lead period increases forecast accuracy decreases.

Fishermen Warning Graphics



Legend

	Squally Weather with wind speed 35-45 kmph gusting to 55 kmph		Squally wind with speed 55-65 kmph gusting to 75 kmph
	Squally Weather with wind speed 40-50 kmph gusting to 60 kmph		CS with Gale winds with speed 60-80 kmph gusting to 90 kmph
	Squally Weather with wind speed 45-55 kmph gusting to 65 kmph		SCS with Gale wind speed 90-110 kmph gusting to 120 kmph
	Squally wind with speed 45-55 kmph gusting to 65 kmph		VSCS with Gale wind speed 120-165 kmph gusting to 185 kmph
	Squally wind with speed 50-60 kmph gusting to 70 kmph		ESCS with Gale wind speed 165-220 kmph gusting to 245 kmph

Fishermen are advised not to venture into the marked areas.