



Government of India
Ministry of Earth Sciences



India Meteorological Department

PRESS RELEASE-1

Time of issue: 1230 hours IST

Dated: 1ST December, 2023

Sub: Depression over Southeast & adjoining Southwest Bay of Bengal (Pre-Cyclone Watch: **Yellow Message)**

A low pressure area formed over South Andaman Sea & adjoining Malacca Strait in the early morning (0530 hours IST) of the 27th November. It lay as a well marked low pressure area over Southeast Bay of Bengal & adjoining South Andaman Sea in the early morning (0530 hours IST) of the 29th November. It concentrated into a depression over Southeast & adjoining Southwest Bay of Bengal in the early morning (0530 hours IST) of today, the 1st December, 2023.

It moved northwestwards with a speed of 10 kmph during past 03 hours and lay centered at 0830 hours IST of today, the 01st December, 2023 over the same region near Latitude 9.3°N and Longitude 86.2°E, about 760 km east-southeast of Puducherry, 780 km east-southeast of Chennai, 960 km southeast of Bapatla and 940 km southeast of Machilipatnam.

It is likely to move west-northwestwards, intensify into a Deep Depression by 2nd and further into a Cyclonic Storm over Southwest Bay of Bengal around 3rd December. Thereafter, it would move northwestwards and cross South Andhra Pradesh and adjoining North Tamil Nadu coasts between Chennai and Machilipatnam around evening of 4th December as a **Cyclonic Storm**.

Track & Intensity Forecasts:

Date/Time (IST)	Position (Lat. °N/ long. °E)	Maximum sustained surface wind speed (Kmph)	Category of cyclonic disturbance
01.12.23/0830	9.3/86.2	35-45 kmph gusting to 55 kmph	Depression
01.12.23/1730	9.9/85.4	40-50 kmph gusting to 60 kmph	Depression
02.12.23/0530	10.9/84.0	50-60 kmph gusting to 70 kmph	Deep Depression
02.12.23/1730	11.6/82.7	55-65 kmph gusting to 75 kmph	Deep Depression
03.12.23/0530	12.2/81.9	60-70 kmph gusting to 80 kmph	Cyclonic Storm
03.12.23/1730	12.8/81.2	70-80 kmph gusting to 90 kmph	Cyclonic Storm
04.12.23/0530	13.4/80.8	75-85 kmph gusting to 95 kmph	Cyclonic Storm
04.12.23/1730	14.4/80.3	80-90 kmph gusting to 100 kmph	Cyclonic Storm
05.12.23/0530	15.3/80.2	70-80 kmph gusting to 90 kmph	Cyclonic Storm
05.12.23/1730	16.2/80.7	60-70 kmph gusting to 80 kmph	Cyclonic Storm

Contact: Cyclone Warning Division, Office of the Director General of Meteorology,
India Meteorological Department, Ministry of Earth Sciences.

Phone:(91) 11-24652484, FAX: (91) 11-24643128, 24623220, E-mail:cwdhq2008@gmail.com, Website: rsmcnewdelhi.ind.gov.in

Spatial rainfall distribution: Isolated: <25%, A few: 26-50%, Many: 51-75%, Most: 76-100%

Rainfall amount (mm): Heavy rain: 64.5 – 115.5, Very heavy rain: 115.6 – 204.4, Extremely heavy rain: 204.5 or more.

Warnings:

(i) Rainfall Warning (graphics enclosed):

- Light to moderate rainfall at most places with **isolated heavy rainfall** is likely over Andaman & Nicobar Islands on 1st December.
- **North Coastal Tamil Nadu & Puducherry:** Light to moderate rainfall at most places with **isolated heavy rainfall** is very likely on 2nd December. The rainfall intensity would increase from 3rd December with rainfall at most places and heavy to very heavy rainfall at few places and isolated extremely heavy rainfall. Rainfall at most places with heavy to very heavy rainfall at isolated places likely on 4th December and decrease thereafter.
- **Coastal Andhra Pradesh:** Light to moderate rainfall at most places with heavy to very heavy rainfall at a few places and extremely heavy rainfall at isolated places on 3rd and 4th December. Isolated heavy to very heavy rainfall is likely over south coastal Andhra Pradesh and heavy to very heavy rainfall at a few places and extremely heavy rainfall at isolated places likely over North coastal Andhra Pradesh on 5th December.
- **Rayalaseema:** Light to moderate rainfall at most places with **isolated heavy to very heavy rainfall** on 3rd & 4th December.
- **Odisha:** Light to moderate rainfall at most places with **isolated heavy rainfall** is likely over south Coastal and adjoining south Interior Odisha on 4th and **isolated heavy to very heavy rainfall** over the same region on 5th December.

(ii) Wind warning:

- **Southeast Bay of Bengal:**

Squally weather with wind speed reaching **40-50 kmph gusting to 60 kmph** is likely to prevail over Southeast Bay of Bengal during 1st & 2nd December and likely to decrease thereafter.

- **Southwest Bay of Bengal along & off north Tamil Nadu-Puducherry Coasts:**

Squally wind speed reaching **35-45 kmph gusting to 55 kmph** is prevailing over Southwest Bay of Bengal. It is likely to gradually increase becoming **50-60 kmph gusting to 70 kmph** from 2nd December morning. It would increase further becoming **Gale Wind** speed reaching **60-70 kmph gusting to 80 kmph** from 3rd December morning and **70-80 kmph gusting to 90 kmph** from 3rd evening for subsequent 24 hours.

- **Westcentral Bay of Bengal and along & off south Andhra Pradesh Coast:**

Squally wind speed reaching **35-45 kmph gusting to 55 kmph** is likely to prevail over westcentral Bay of Bengal from 2nd December evening. It is likely to gradually increase becoming **55-65 kmph gusting to 75 kmph** from 3rd December morning. It is likely to increase further becoming **Gale Wind** speed reaching **70-80 kmph gusting to 90 kmph** from 3rd evening and **80-90 kmph gusting to 100 kmph** from 4th evening for subsequent 12 hours. It would gradually decrease thereafter.

- **Along & off north Andhra Pradesh Coast:**

Squally wind speed reaching **45-55 kmph gusting to 65 kmph** likely from 4th December evening, likely to gradually increase becoming **55-65 kmph gusting to 75 kmph** from 5th December evening for subsequent 12 hours. It would gradually decrease thereafter.

- **Along & off South Odisha Coast:**

Squally wind speed reaching **35-45 kmph gusting to 55 kmph** likely from 4th December evening, likely to gradually increase becoming **40-50 kmph gusting to 60 kmph** from 5th December evening for subsequent 12 hours. It would gradually decrease thereafter.

(iii) Sea Condition:

- **Southeast Bay of Bengal:**

Rough to very Rough Sea condition is likely over Southeast Bay of Bengal during 01st-02nd December and would improve thereafter.

- **Southwest Bay of Bengal and along & off north Tamil Nadu-Puducherry Coasts:**

Rough to Very Rough sea condition is prevailing over the region. It is likely to become **very rough to high** from 3rd December morning for subsequent 24 hours and improve thereafter gradually.

- **Westcentral Bay of Bengal and along & off south Andhra Pradesh Coast:**

Rough to Very Rough to sea condition is likely from 2nd December evening, becoming **very rough to high** from 3rd December morning till 5th December.

- **Along & off North Andhra Pradesh Coast:**

Rough to Very Rough to sea condition is likely from 4th December evening till 5th December.

- **Along & off South Odisha Coast:**

Rough to Very Rough to sea condition is likely from 4th December evening till 5th December.

(iv) Fishermen Warning (graphics attached):

Fishermen are advised not to venture into:

- Southeast Bay of Bengal during 1st to 2nd December.
- Southwest Bay of Bengal and along & off North Tamil Nadu-Puducherry Coasts during 1st to 4th December.
- Westcentral Bay of Bengal and along & off Andhra Pradesh Coast from 2nd December morning to 5th December.
- Along & off South Odisha coast from 4th December evening till 5th December

The Fishermen out at sea are advised to return to coast by 1st December.

(v) Damage Expected over coastal districts of South Andhra Pradesh and adjoining coastal districts of North Tamil Nadu-Puducherry:

- Damage to thatched huts.
- Possibilities of damage to vulnerable structure.
- Breaking of tree branches and uprooting of small & medium sized trees.
- Minor damage to power and communication lines due to breaking of branches and uprooting of trees.
- Major damage to Kutcha and minor damage to Pucca roads due to heavy rain.
- Damage to paddy crops, horticultural crops and orchards.
- Sea water inundation in low lying areas after erosion of Kutcha embankments
- Inundation of low lying areas in coastal districts due to heavy rainfall and flash flood
- Localized Flooding of roads and closure of underpasses mainly in urban areas of the above region.
- Occasional reduction in visibility due to heavy rainfall.
- Disruption of traffic due to water logging and squally winds
- Localized Landslides/Mudslides
- It may lead to riverine flooding in some river catchments (for riverine flooding please visit Web page of CWC)

(vi) Action Suggested for coastal districts of South Andhra Pradesh and adjoining coastal districts of North Tamil Nadu-Puducherry:

- Total suspension of fishing operations.
- Fishermen out at sea are advised to return to coast by 1st December
- Surface transport and shipping operations need to be regulated
- Onshore & Offshore operation need to be regulated as per guidelines
- Coastal hutment dwellers to be in safer places.
- People in affected areas to remain indoors.
- Avoid going to areas that face the water logging problems often.
- Avoid staying in vulnerable structure.

Contact: Cyclone Warning Division, Office of the Director General of Meteorology,

India Meteorological Department, Ministry of Earth Sciences.

Phone:(91) 11-24652484, FAX: (91) 11-24643128, 24623220, E-mail:cwdhq2008@gmail.com, Website: rsmcnewdelhi.ind.gov.in

Spatial rainfall distribution: Isolated: <25%, A few: 26-50%, Many: 51-75%, Most: 76-100%

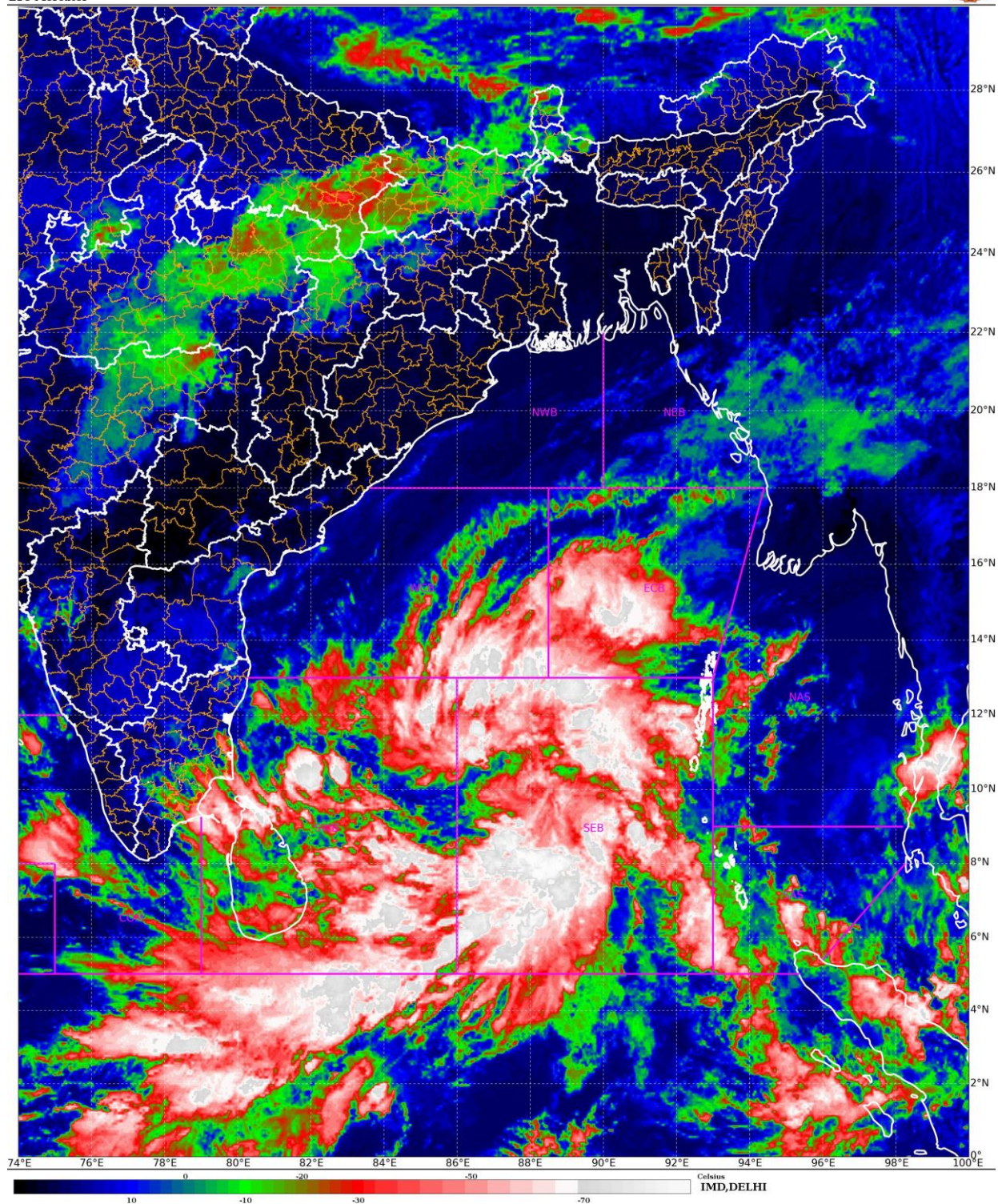
Rainfall amount (mm): Heavy rain: 64.5 – 115.5, Very heavy rain: 115.6 – 204.4, Extremely heavy rain: 204.5 or more.

The system is under continuous surveillance and the next Press Release will be issued at 1130 hours IST of 2nd December, 2023.

For regular updates kindly visit www.rsmcnewdelhi.imd.gov.in and www.mausam.imd.gov.in

SAT : INSAT-3D IMG
IMG_TIR1_TEMP 10.8 um
LIC Mercator

01-12-2023/(0500 to 0527) GMT
01-12-2023/(1030 to 1057) IST



Contact: Cyclone Warning Division, Office of the Director General of Meteorology,
India Meteorological Department, Ministry of Earth Sciences.

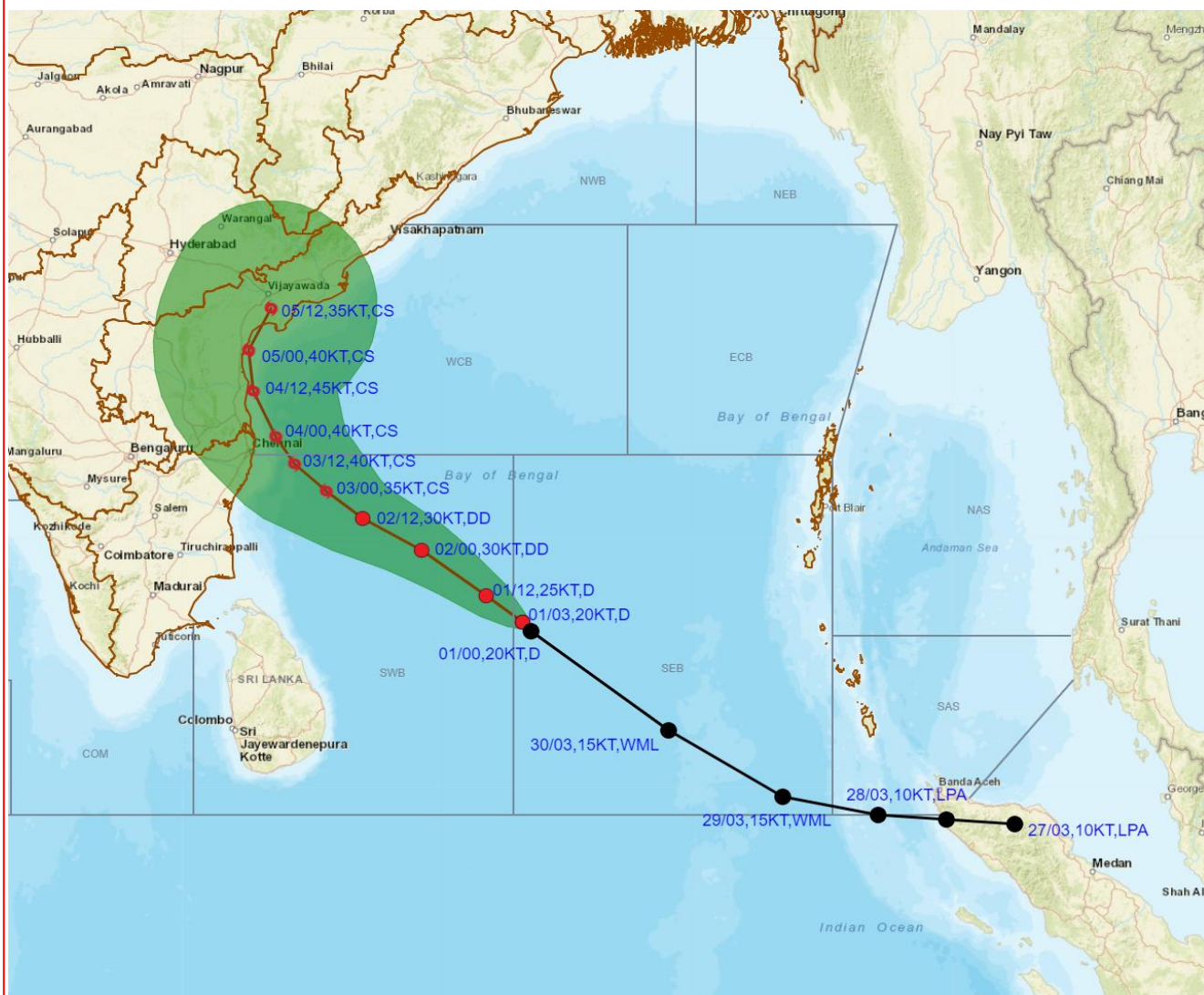
Phone:(91) 11-24652484, FAX: (91) 11-24643128, 24623220, E-mail:cwdhq2008@gmail.com, Website: rsmcnewdelhi.imd.gov.in

Spatial rainfall distribution: Isolated: <25%, A few: 26-50%, Many: 51-75%, Most: 76-100%

Rainfall amount (mm): Heavy rain: 64.5 – 115.5, Very heavy rain: 115.6 – 204.4, Extremely heavy rain: 204.5 or more.



OBSERVED AND FORECAST TRACK ALONGWITH CONE OF UNCERTAINTY IN ASSOCIATION WITH DEPRESSION OVER SOUTHEAST ADJOINING SOUTHWEST BAY OF BENGAL BASED ON 0300 UTC (0830 IST) OF 01ST DECEMBER 2023.



DATE/TIME IN UTC

IST=UTC + 0530

L: LOW PRESSURE AREA

WML: WELL MARKED LOW PRESSURE AREA

D: DEPRESSION (17-27 KT)

DD: DEEP DEPRESSION (28-33 KT)

CS: CYCLONIC STORM (34-47 KT)

SCS: SEVERE CYCLONIC STORM (48-63KT)

VSCS: VERY SEVERE CYCLONIC STORM (64-89 KT)

ESCS: EXTREMELY SEVERE CYCLONIC STORM (90-119 KT)

SuCS: SUPER CYCLONIC STORM (≥ 120 KT)

● LESS THAN 34 KT

● 34-47 KT

● ≥ 48 KT

— OBSERVED TRACK

— FORECAST TRACK

▲ CONE OF UNCERTAINTY

Contact: Cyclone Warning Division, Office of the Director General of Meteorology,

India Meteorological Department, Ministry of Earth Sciences.

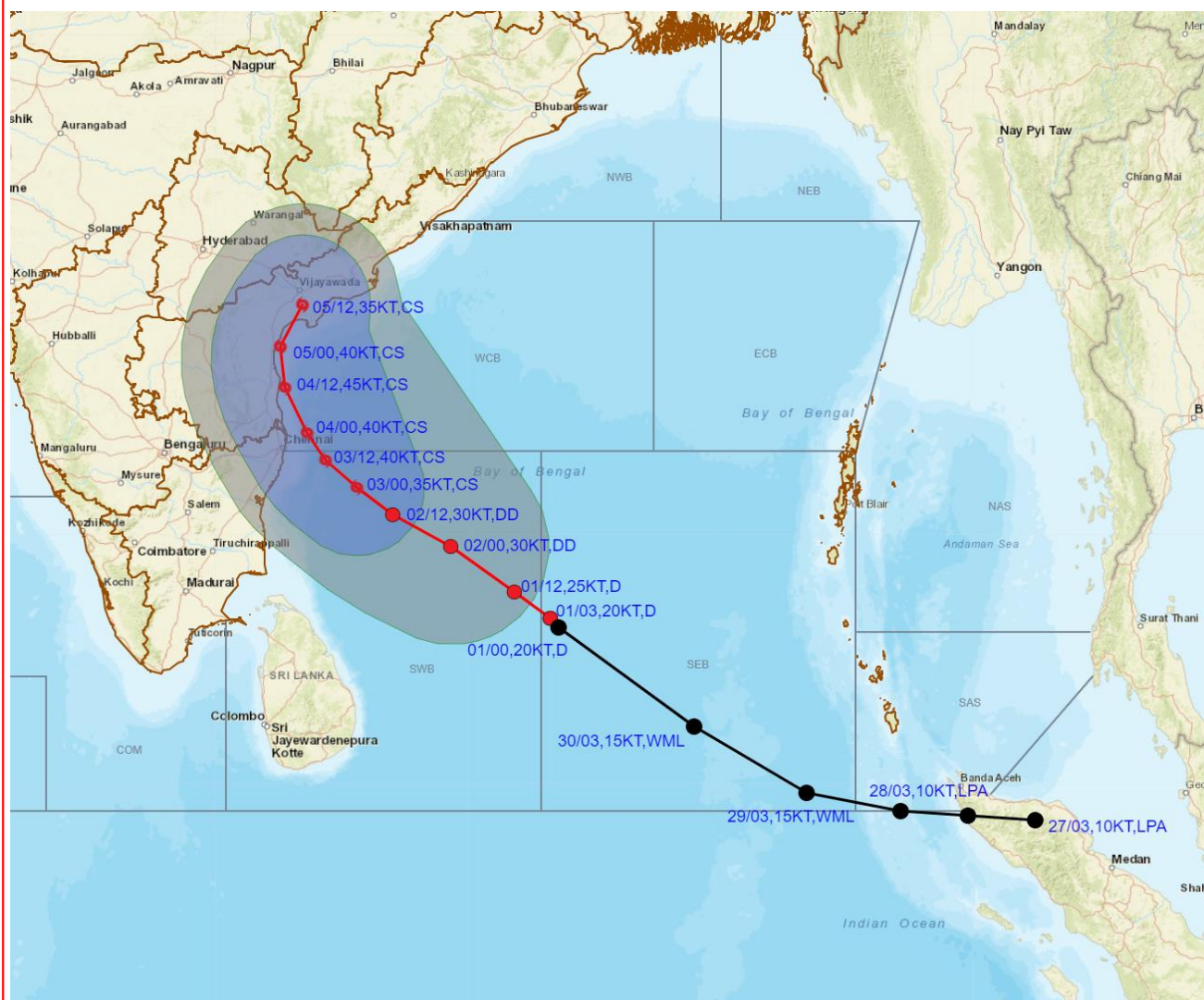
Phone:(91) 11-24652484, FAX: (91) 11-24643128, 24623220, E-mail:cwdhq2008@gmail.com, Website: rsmcnewdelhi.imd.gov.in

Spatial rainfall distribution: Isolated: <25%, A few: 26-50%, Many: 51-75%, Most: 76-100%

Rainfall amount (mm): Heavy rain: 64.5 – 115.5, Very heavy rain: 115.6 – 204.4, Extremely heavy rain: 204.5 or more.



OBSERVED AND FORECAST TRACK ALONG WITH QUADRANT WIND DISTRIBUTION IN ASSOCIATION WITH DEPRESSION OVER SOUTHEAST ADJOINING SOUTHWEST BAY OF BENGAL BASED ON 0300 UTC (0830 IST) OF 01ST DECEMBER 2023.



DATE/TIME IN UTC
IST=UTC + 0530
L: LOW PRESSURE AREA
WML: WELL MARKED LOW PRESSURE AREA
D: DEPRESSION (17-27 KT)
DD: DEEP DEPRESSION (28-33 KT)
CS: CYCLONIC STORM (34-47 KT)
SCS: SEVERE CYCLONIC STORM (48-63KT)
VSCS: VERY SEVERE CYCLONIC STORM (64-89 KT)
ESCS: EXTREMELY SEVERE CYCLONIC STORM (90-119 KT)
SuCS: SUPER CYCLONIC STORM (≥ 120 KT)

● LESS THAN 34 KT
○ 34-47 KT
○ ≥ 48 KT
— OBSERVED TRACK
— FORECAST TRACK
— CONE OF UNCERTAINTY
AREA OF MAXIMUM SUSTAINED WIND SPEED:
28-33 KT (52-61 KMPH)
34-49 KT (62-91 KMPH)
50-63 KT (92-117 KMPH)
≥ 64 KT (≥ 118 KMPH)

IMPACT OVER THE SEA

MSW (knot/kmph)	Impact	Action
28-33 (52-61)	Very rough seas	Total suspension of fishing operations
34-49 (62-91)	High to very high seas	Total suspension of fishing operations
50-63 (92-117)	Very high seas	Total suspension of fishing operations
≥ 64 (≥ 118)	Phenomenal	Total suspension of fishing operations

Contact: Cyclone Warning Division, Office of the Director General of Meteorology,

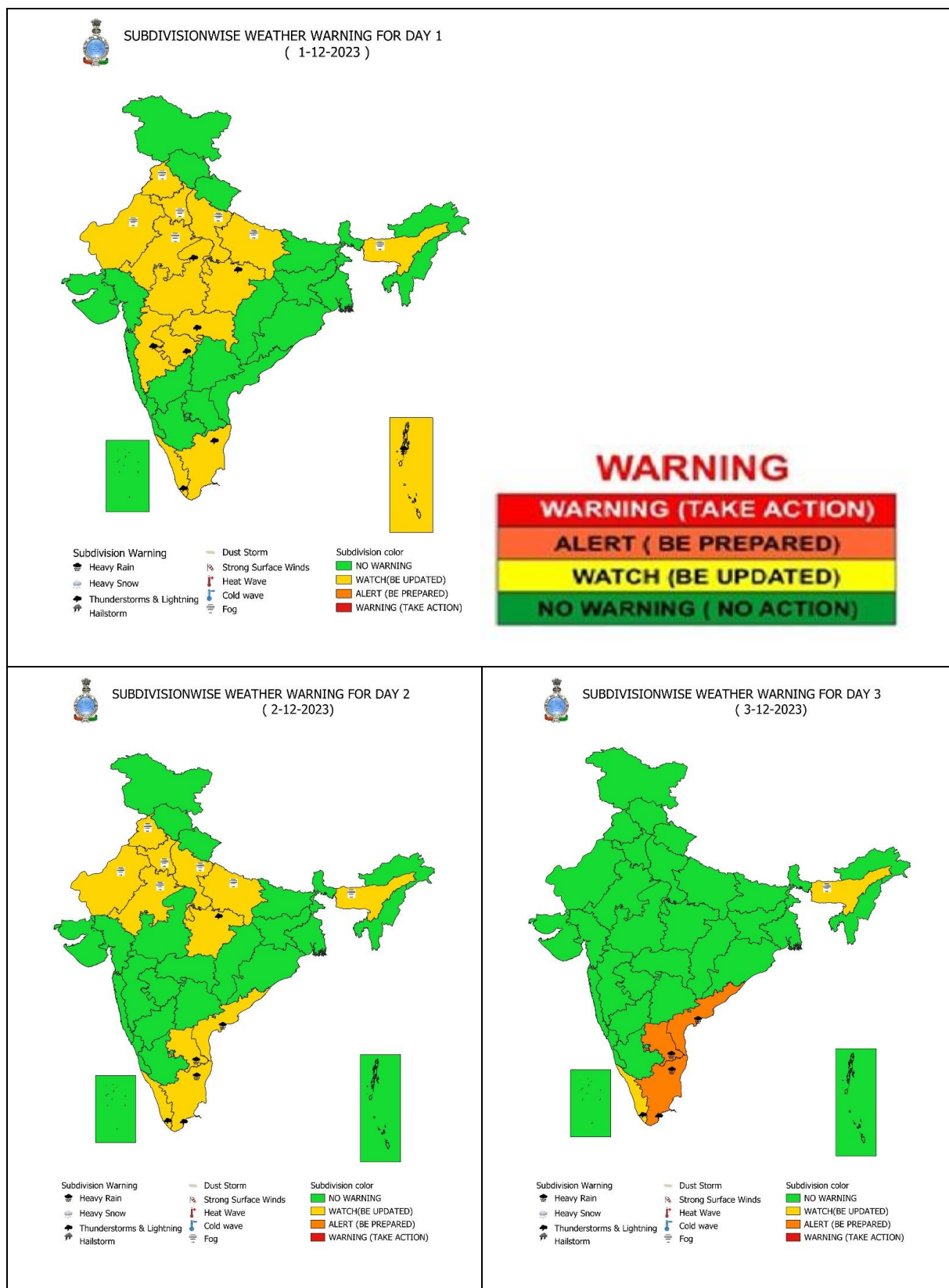
India Meteorological Department, Ministry of Earth Sciences.

Phone:(91) 11-24652484, FAX: (91) 11-24643128, 24623220, E-mail:cwdhq2008@gmail.com, Website: rsmcnewdelhi.ind.gov.in

Spatial rainfall distribution: Isolated: <25%, A few: 26-50%, Many: 51-75%, Most: 76-100%

Rainfall amount (mm): Heavy rain: 64.5 – 115.5, Very heavy rain: 115.6 – 204.4, Extremely heavy rain: 204.5 or more.

Weather Warning Graphics



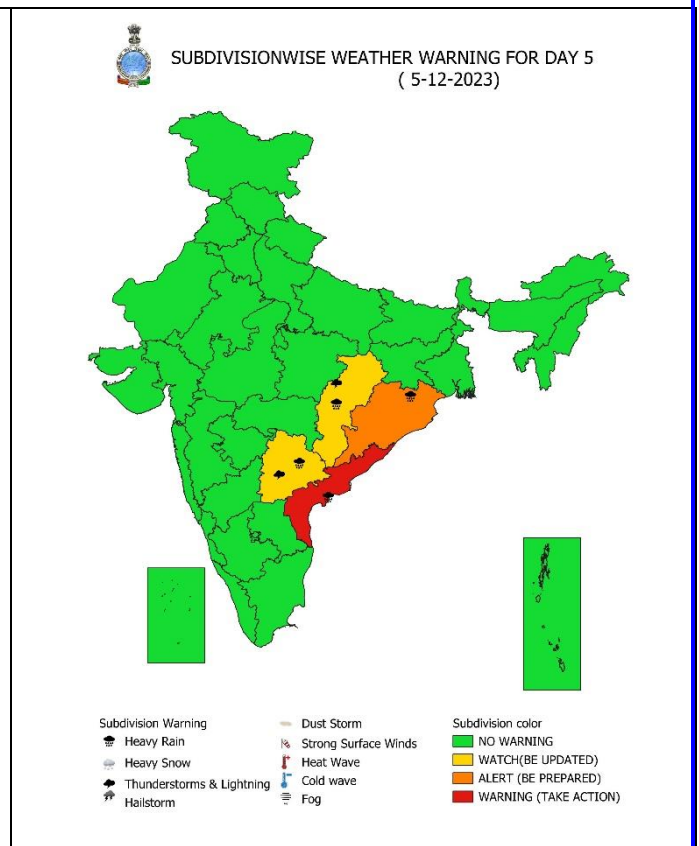
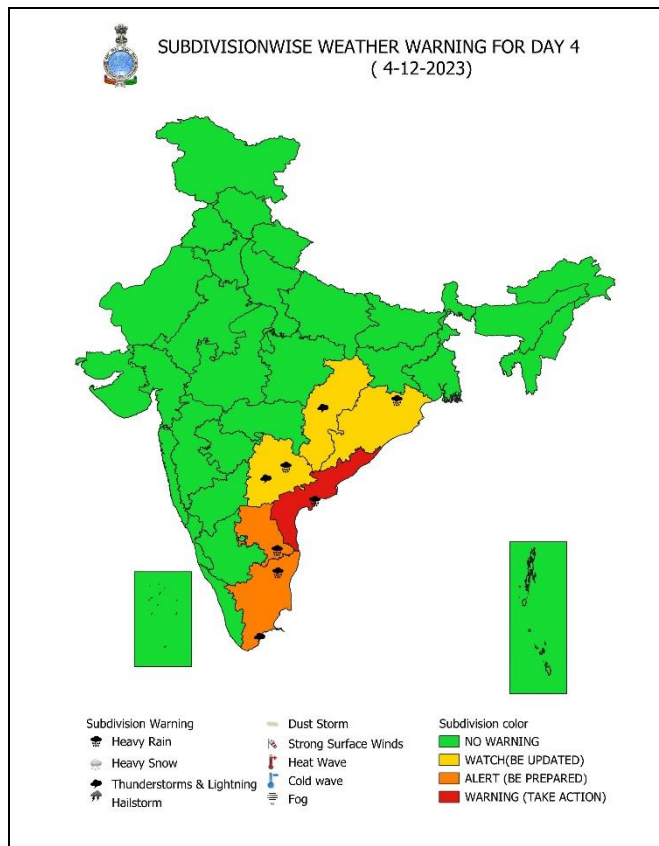
Contact: Cyclone Warning Division, Office of the Director General of Meteorology,

India Meteorological Department, Ministry of Earth Sciences.

Phone:(91) 11-24652484, FAX: (91) 11-24643128, 24623220, E-mail:cwdhq2008@gmail.com, Website: rsmcnewdelhi.ind.gov.in

Spatial rainfall distribution: Isolated: <25%, A few: 26-50%, Many: 51-75%, Most: 76-100%

Rainfall amount (mm): Heavy rain: 64.5 – 115.5, Very heavy rain: 115.6 – 204.4, Extremely heavy rain: 204.5 or more.



Heavy Rain



Strong Winds



Frost



Heavy Snow



Visibility



Cold Wave



Thunderstorm



Cyclone



Heat Wave



Dust Storm



Squall/ Hail



Sea State

Contact: Cyclone Warning Division, Office of the Director General of Meteorology,

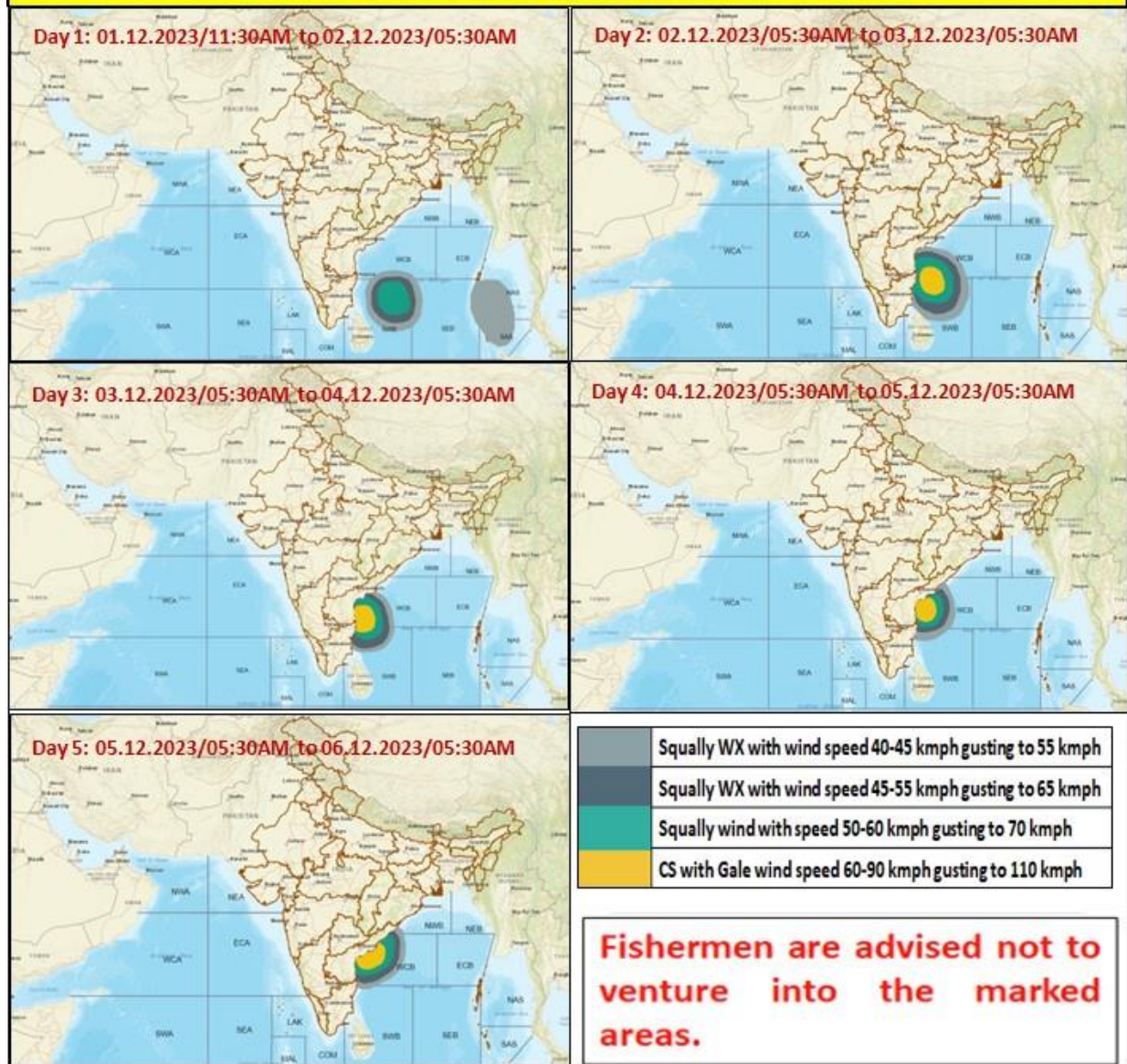
India Meteorological Department, Ministry of Earth Sciences.

Phone: (91) 11-24652484, FAX: (91) 11-24643128, 24623220, E-mail: cwdhq2008@gmail.com, Website: rsmcnewdelhi.ind.gov.in

Spatial rainfall distribution: Isolated: <25%, A few: 26-50%, Many: 51-75%, Most: 76-100%

Rainfall amount (mm): Heavy rain: 64.5 – 115.5, Very heavy rain: 115.6 – 204.4, Extremely heavy rain: 204.5 or more.

Fishermen warning graphics



Contact: Cyclone Warning Division, Office of the Director General of Meteorology,

India Meteorological Department, Ministry of Earth Sciences.

Phone: (91) 11-24652484, FAX: (91) 11-24643128, 24623220, E-mail: cwdhq2008@gmail.com, Website: rsmcnewdelhi.ind.gov.in

Spatial rainfall distribution: Isolated: <25%, A few: 26-50%, Many: 51-75%, Most: 76-100%

Rainfall amount (mm): Heavy rain: 64.5 – 115.5, Very heavy rain: 115.6 – 204.4, Extremely heavy rain: 204.5 or more.

Probability of exceedance of maximum sustained winds ≥ 45 kmph

Day 1: 01.12.2023/05:30AM to 02.12.2023/05:30AM



Day 2: 02.12.2023/05:30AM to 03.12.2023/05:30AM



Day 3: 03.12.2023/05:30AM to 04.12.2023/05:30AM



Day 4: 04.12.2023/05:30AM to 05.12.2023/05:30AM



Day 5: 05.12.2023/05:30AM to 06.12.2023/05:30AM



	Probability of exceedance
	Low (1-33%)
	Moderate (34-67%)
	High (68-100%)

Contact: Cyclone Warning Division, Office of the Director General of Meteorology,
India Meteorological Department, Ministry of Earth Sciences.

Phone: (91) 11-24652484, FAX: (91) 11-24643128, 24623220, E-mail: cwdhq2008@gmail.com, Website: rsmcnewdelhi.ind.gov.in

Spatial rainfall distribution: Isolated: <25%, A few: 26-50%, Many: 51-75%, Most: 76-100%

Rainfall amount (mm): Heavy rain: 64.5 – 115.5, Very heavy rain: 115.6 – 204.4, Extremely heavy rain: 204.5 or more.