



सत्यमेव जयते
Government of India
Ministry of Earth Sciences



India Meteorological Department

PRESS RELEASE-1

Time of issue: 1430 hours IST

Dated: 30th September, 2023

**Sub: A) Depression over Eastcentral Arabian Sea off south Konkan-Goa coasts
B) Well marked low pressure area over Northwest Bay of Bengal**

Under the influence of the cyclonic circulation over North coastal Karnataka & neighbourhood, a low pressure area formed over Eastcentral Arabian Sea off South Konkan-Goa coasts in the early morning (0530 hours IST) of the 29th September, 2023. It lay as a Well Marked Low Pressure Area (WML) over the same region in the early morning (0530 hours IST) of today, the 30th September, 2023. It concentrated into a depression over the same region at 0830 hours IST of today, the 30th September, 2023 near latitude 15.9°N and longitude 72.8°E about 110 km west-northwest of Panjim (Goa), 130 km south-southwest of Ratnagiri (Maharashtra) and 250 km northwest of Honavar (Karnataka).

It is likely to move east-northeastwards and cross Konkan-Goa coasts between Panjim and Ratnagiri by tonight.

Warnings:

(i) Rainfall (warning graphics enclosed)

South Konkan-Goa:

Light/moderate rainfall at most places with heavy to very heavy rainfall at a few places and extremely heavy rainfall at isolated places is very likely on 30th September and 1st October, 2023.

North Konkan:

Light/moderate rainfall at most places with heavy rainfall at isolated places is very likely on 30th September and 1st October, 2023.

Costal Karnataka:

Light/moderate rainfall at most places with heavy to very heavy rainfall at isolated places on 30th September and isolated heavy rainfall on 1st October, 2023.

South Madhya Maharashtra:

Light/moderate rainfall at most places with heavy to very heavy rainfall at isolated places on 30th September and 1st October, 2023.

Kerala:

Light/moderate rainfall at most places with heavy to very heavy rainfall at isolated places on 30th September, 2023.

Contact: Cyclone Warning Division, Office of the Director General of Meteorology,
India Meteorological Department, Ministry of Earth Sciences.

Phone:(91) 11-24652484, FAX: (91) 11-24643128, 24623220, E-mail:cwdhq2008@gmail.com, Website: rsmcnewdelhi.ind.gov.in

Spatial rainfall distribution: Isolated: <25%, A few: 26-50%, Many: 51-75%, Most: 76-100%

Rainfall amount (mm): Heavy rain: 64.5 – 115.5, Very heavy rain: 115.6 – 204.4, Extremely heavy rain: 204.5 or more.

(ii) Wind warning:

Squally wind speed reaching 40-50 kmph gusting to 60kmph is prevailing over Eastcentral Arabian Sea along & off Maharashtra-Goa-Karnataka coasts. It is likely to become **45-55 kmph gusting to 65kmph** from evening of today, the 30th September, 2023 and prevail during subsequent 24 hours.

(iii) Sea condition

Rough to very rough sea condition is very likely over Eastcentral Arabian Sea along & off Maharashtra-Goa-Karnataka coasts on 30th September and 1st October, 2023.

(iv) Fishermen Warning (warning graphics enclosed)

Fishermen are advised not to venture into Eastcentral Arabian Sea along & off Maharashtra-Goa-Karnataka coasts on 30th September and 1st October, 2023.

B) Well marked low pressure area over Northwest Bay of Bengal

Under the influence of the cyclonic circulation over Myanmar & adjoining Eastcentral Bay of Bengal, a low pressure area formed over Northeast & adjoining Eastcentral Bay of Bengal in the early morning (0530 hours IST) of the 29th September, 2023. It lay as a Well Marked Low Pressure Area (WML) over the same region in the early morning (0530 hours IST) of today, the 30th September, 2023. It persisted over the same region at 0830 hours IST of today, the 30th September, 2023. It is likely to move west-northwestwards across north Odisha & adjoining West Bengal coasts during next 24 hours.

Warnings:

(i) Rainfall (warning graphics enclosed)

30th September:

Light/moderate rainfall at most places with heavy to very heavy rainfall at isolated places is very likely over Gangetic West Bengal, North Odisha and Jharkhand.

01st October:

Light/moderate rainfall at most places with heavy to very heavy rainfall at isolated places is very likely over North Odisha, North Chhattisgarh and Jharkhand; isolated heavy rainfall over Gangetic West Bengal and Bihar.

2nd October:

Light/moderate rainfall at most places with heavy to very heavy rainfall at isolated places is very likely over North Odisha, Bihar, Jharkhand, Sub-Himalayan west Bengal & Sikkim; isolated heavy rainfall over Gangetic West Bengal.

(ii) Wind warning:

Squally wind speed reaching 40-50 kmph gusting to 60kmph is prevailing and likely over North Bay of Bengal along & off North Odisha -West Bengal and adjoining Bangladesh coasts during 30th September to 1st October.

(iii) Sea condition

Rough sea condition is very likely over North Bay of Bengal along & off North Odisha -West Bengal and adjoining Bangladesh coasts during 30th September to 1st October, 2023.

(iv) Fishermen Warning (warning graphics enclosed)

Fishermen are advised not to venture into North Bay of Bengal along & off North Odisha -West Bengal and adjoining Bangladesh coasts till 1st October, 2023.

The system is under continuous surveillance and the next message will be issued at 1430 hours IST of the 1st October, 2023.

For regular updates kindly visit www.rsmcnewdelhi.imd.gov.in and www.mausam.imd.gov.in



OBSERVED AND FORECAST TRACK OF DEPRESSION OVER EASTCENTRAL ARABIAN SEA AND LOCATION OF WELL MARKED LOW PRESSURE AREA OVER NORTH WEST BAY OF BENGAL BASED ON 0300 UTC (0830 IST) OF 30TH SEPTEMBER, 2023.



DATE/TIME IN UTC
 IST=UTC + 0530
 L: LOW PRESSURE AREA
 WML: WELL MARKED LOW PRESSURE AREA
 D: DEPRESSION (17-27 KT)
 DD: DEEP DEPRESSION (28-33 KT)
 CS: CYCLONIC STORM (34-47 KT)
 SCS: SEVERE CYCLONIC STORM (48-63KT)
 VSCS: VERY SEVERE CYCLONIC STORM (64-89 KT)
 ESCS: EXTREMELY SEVERE CYCLONIC STORM (90-119 KT)
 SuCS: SUPER CYCLONIC STORM (\geq 120 KT)

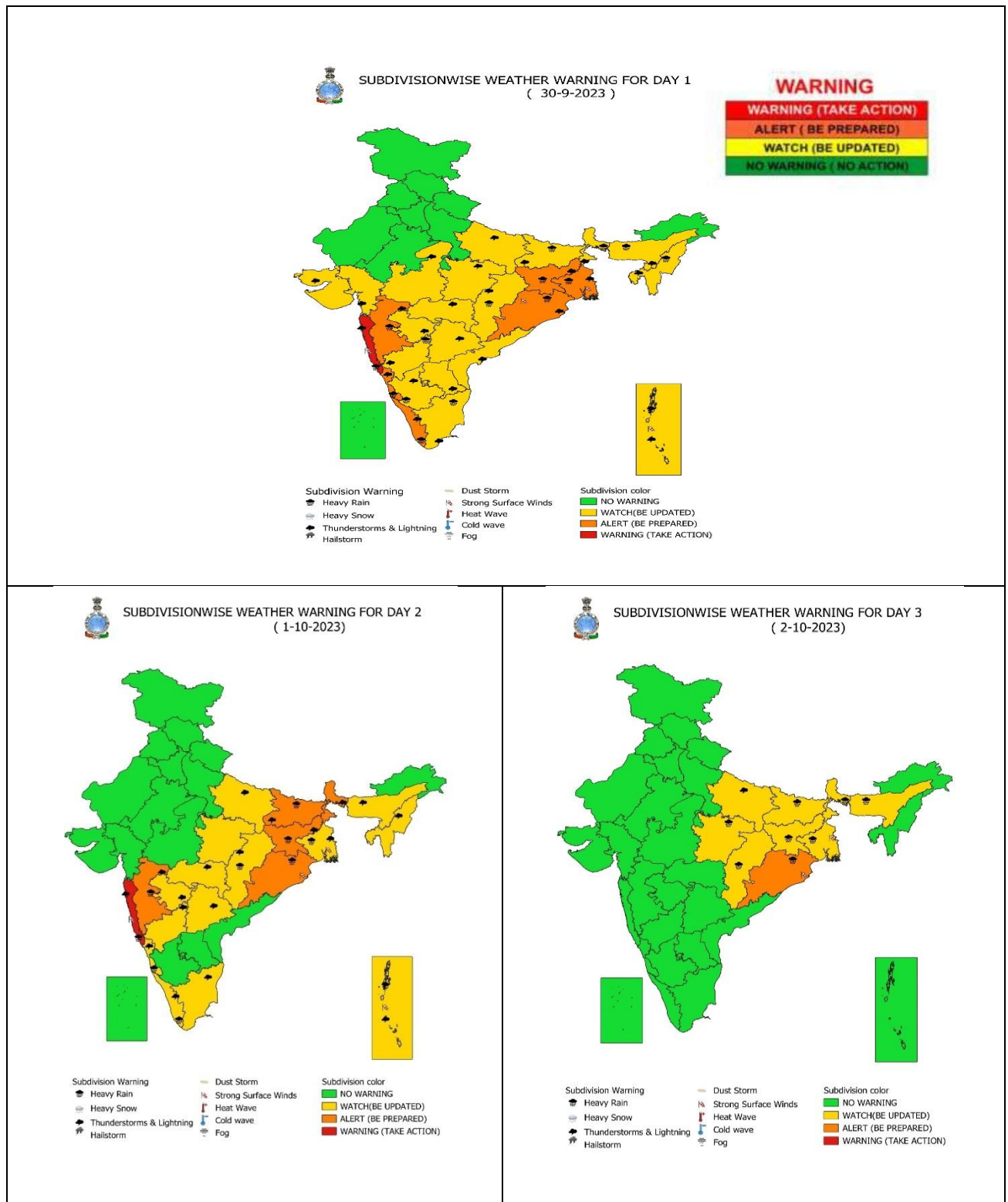
● LESS THAN 34 KT
 6 34-47 KT
 8 \geq 48 KT
 — OBSERVED TRACK
 — FORECAST TRACK
 ▲ CONE OF UNCERTAINTY

Contact: Cyclone Warning Division, Office of the Director General of Meteorology,
 India Meteorological Department, Ministry of Earth Sciences.

Phone:(91) 11-24652484, FAX: (91) 11-24643128, 24623220, E-mail:cwdhq2008@gmail.com, Website: rsmcnewdelhi.ind.gov.in

Spatial rainfall distribution: Isolated: <25%, A few: 26-50%, Many: 51-75%, Most: 76-100%

Rainfall amount (mm): Heavy rain: 64.5 – 115.5, Very heavy rain: 115.6 – 204.4, Extremely heavy rain: 204.5 or more.



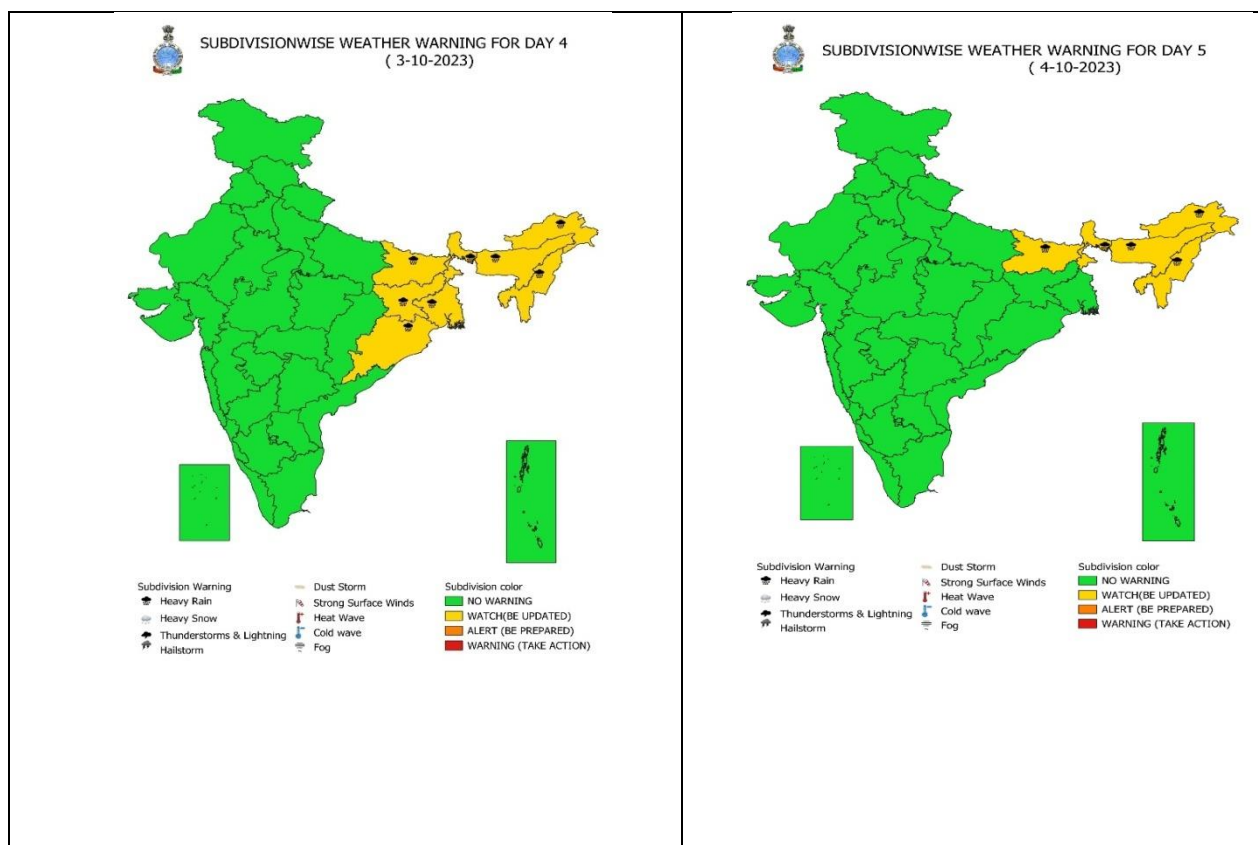
Contact: Cyclone Warning Division, Office of the Director General of Meteorology,

India Meteorological Department, Ministry of Earth Sciences.

Phone:(91) 11-24652484, FAX: (91) 11-24643128, 24623220, E-mail:cwdhq2008@gmail.com, Website: rsmcnewdelhi.ind.gov.in

Spatial rainfall distribution: Isolated: <25%, A few: 26-50%, Many: 51-75%, Most: 76-100%

Rainfall amount (mm): Heavy rain: 64.5 – 115.5, Very heavy rain: 115.6 – 204.4, Extremely heavy rain: 204.5 or more.



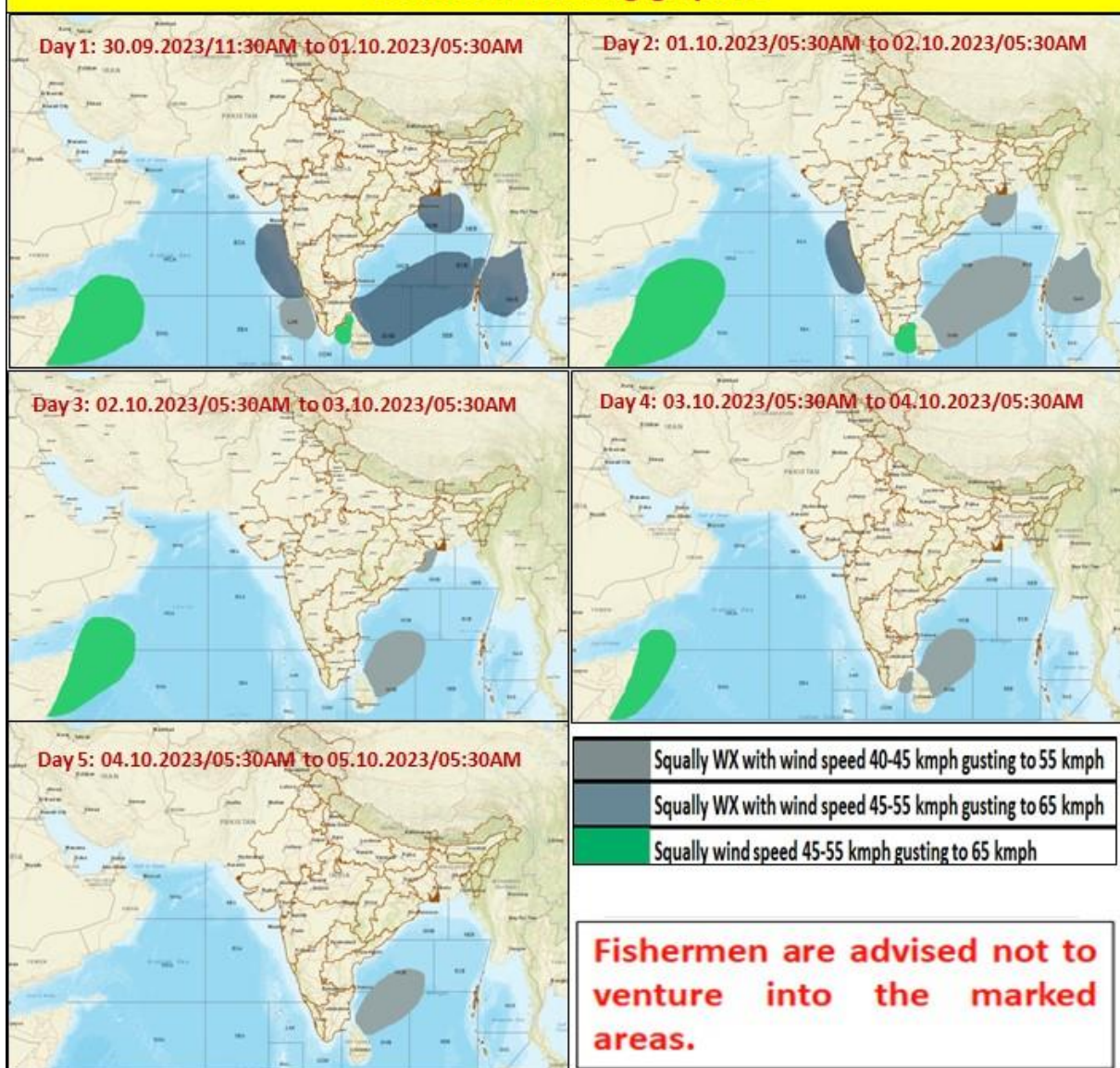
Contact: Cyclone Warning Division, Office of the Director General of Meteorology,
India Meteorological Department, Ministry of Earth Sciences.

Phone:(91) 11-24652484, FAX: (91) 11-24643128, 24623220, E-mail:cwdhq2008@gmail.com, Website: smcnewdelhi.ind.gov.in

Spatial rainfall distribution: Isolated: <25%, A few: 26-50%, Many: 51-75%, Most: 76-100%

Rainfall amount (mm): Heavy rain: 64.5 – 115.5, Very heavy rain: 115.6 – 204.4, Extremely heavy rain: 204.5 or more.

Fishermen warning graphics



Contact: Cyclone Warning Division, Office of the Director General of Meteorology,

India Meteorological Department, Ministry of Earth Sciences.

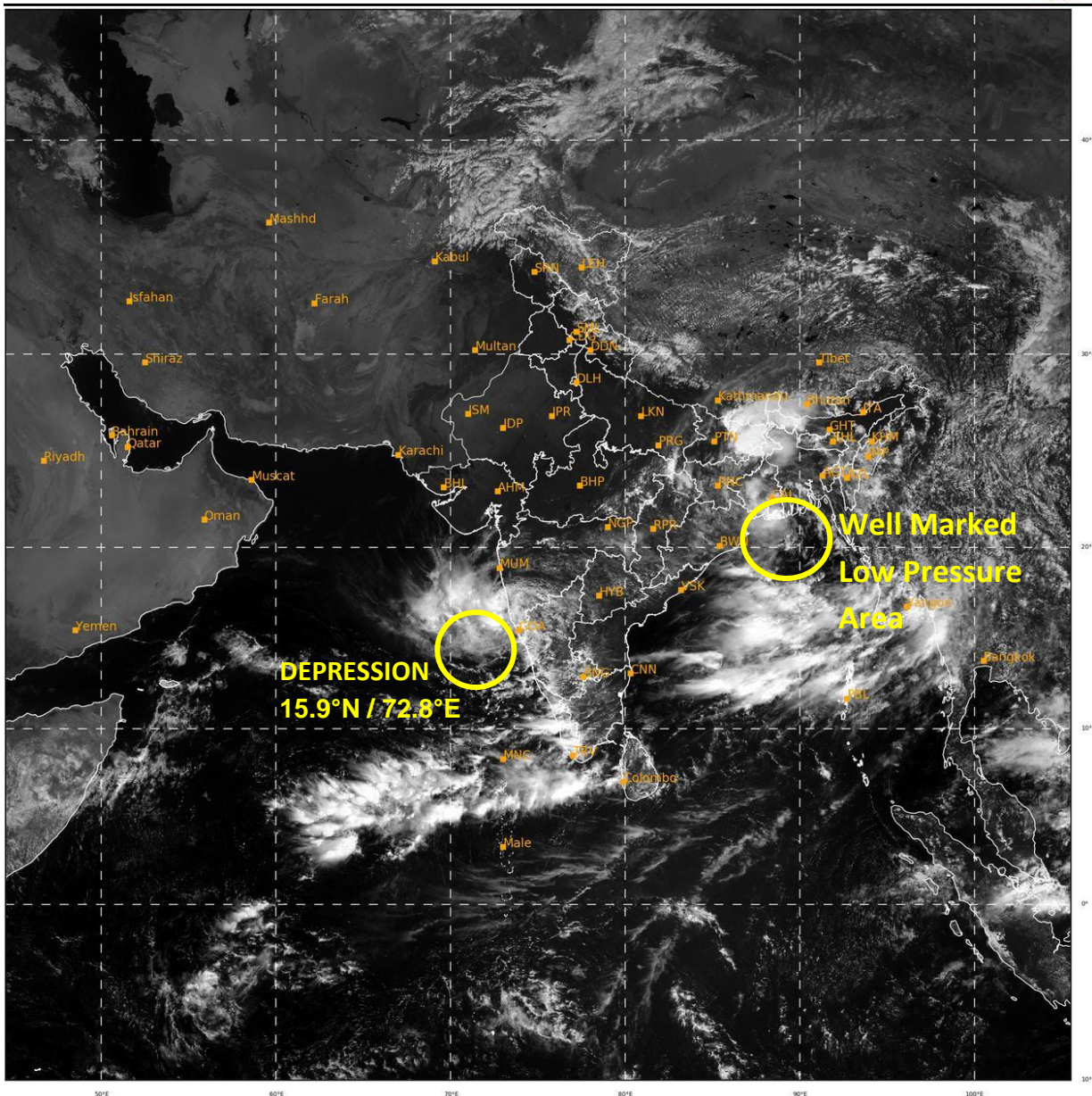
Phone:(91) 11-24652484, FAX: (91) 11-24643128, 24623220, E-mail:cwdhq2008@gmail.com, Website: rsmcnewdelhi.ind.gov.in

Spatial rainfall distribution: Isolated: <25%, A few: 26-50%, Many: 51-75%, Most: 76-100%

Rainfall amount (mm): Heavy rain: 64.5 – 115.5, Very heavy rain: 115.6 – 204.4, Extremely heavy rain: 204.5 or more.

SAT : INSAT-3D IMG
Visible Count 0.65 um
L1C Mercator

30-09-2023/(0600 to 0626) GMT
30-09-2023/(1130 to 1156) IST



20

547

IMD, DELHI

Contact: Cyclone Warning Division, Office of the Director General of Meteorology,
India Meteorological Department, Ministry of Earth Sciences.

Phone:(91) 11-24652484, FAX: (91) 11-24643128, 24623220, E-mail:cwdhq2008@gmail.com, Website: rsmcnewdelhi.imd.gov.in

Spatial rainfall distribution: Isolated: <25%, A few: 26-50%, Many: 51-75%, Most: 76-100%

Rainfall amount (mm): Heavy rain: 64.5 – 115.5, Very heavy rain: 115.6 – 204.4, Extremely heavy rain: 204.5 or more.