



Government of India  
Ministry of Earth Sciences



India Meteorological Department

## PRESS RELEASE-3

Time of issue: 1300 hours IST

Dated: 21<sup>st</sup> July, 2024

### Sub: Depression weakened into Well Marked Low Pressure Area over Coastal Odisha

Yesterday's depression over Odisha coast near Chilika Lake moved northwestwards and weakened into a well-marked low pressure area over coastal Odisha in the same evening (1730 hours IST of 20th July, 2024). It further moved northwestwards and lay over Odisha and adjoining Chhattisgarh in the morning (0830 hours IST) of today, the 21<sup>st</sup> July 2024. It is likely to move northwestwards across Chhattisgarh and weaken gradually into a low pressure area during next 12 hours.

#### Warnings:

##### (i) Rainfall warning

Light to moderate rainfall at most places with heavy to extremely heavy rainfall at isolated places is likely over Vidarbha, heavy to very heavy rainfall at isolated places is likely over Chhattisgarh and heavy rainfall at isolated places is likely over Odisha, Marathwada and Telangana on 21<sup>st</sup> July.

##### (ii) Wind warning

Squally weather with wind speed reaching 45-55 kmph gusting to 65 kmph is very likely to prevail over northwest and adjoining westcentral Bay of Bengal and along and off Odisha, North Andhra Pradesh coasts and wind speed reaching 35-45 gusting to 55 kmph is likely along & off West Bengal & adjoining Bangladesh coasts on 21<sup>st</sup> July.

**(iv) Sea Condition:** Rough to very rough sea condition is very likely to prevail over northwest and adjoining westcentral Bay of Bengal and along and off North Andhra Pradesh, Odisha, West Bengal & adjoining Bangladesh coasts on 21<sup>st</sup> July.

##### (v) Fishermen Warning

Fishermen are advised not to venture into northwest and adjoining westcentral Bay of Bengal and along & off North Andhra Pradesh, Odisha, West Bengal & adjoining Bangladesh coasts on 21<sup>st</sup> July.

*Observed track of the system is presented in Annexure – I. The 24 hours accumulated realized rainfall ( $\geq 7$ cm) at 0300 UTC of 20<sup>th</sup> and 21<sup>st</sup> July is presented in Annexure – II.*

***This is last Press release in association with this system.***

***However regular weather bulletins & Press Release shall continue from the respective Meteorological Centres, Regional Meteorological Centres and National Weather Forecasting Centre (NWFC), New Delhi, India Meteorological Department in association weather over the country and North Indian Ocean.***

Contact: Cyclone Warning Division, Office of the Director General of Meteorology, India Meteorological Department, Ministry of Earth Sciences.

E-mail: [cyclonewarningdivision@gmail.com](mailto:cyclonewarningdivision@gmail.com), Website: [rsmcnewdelhi.imd.gov.in](http://rsmcnewdelhi.imd.gov.in)

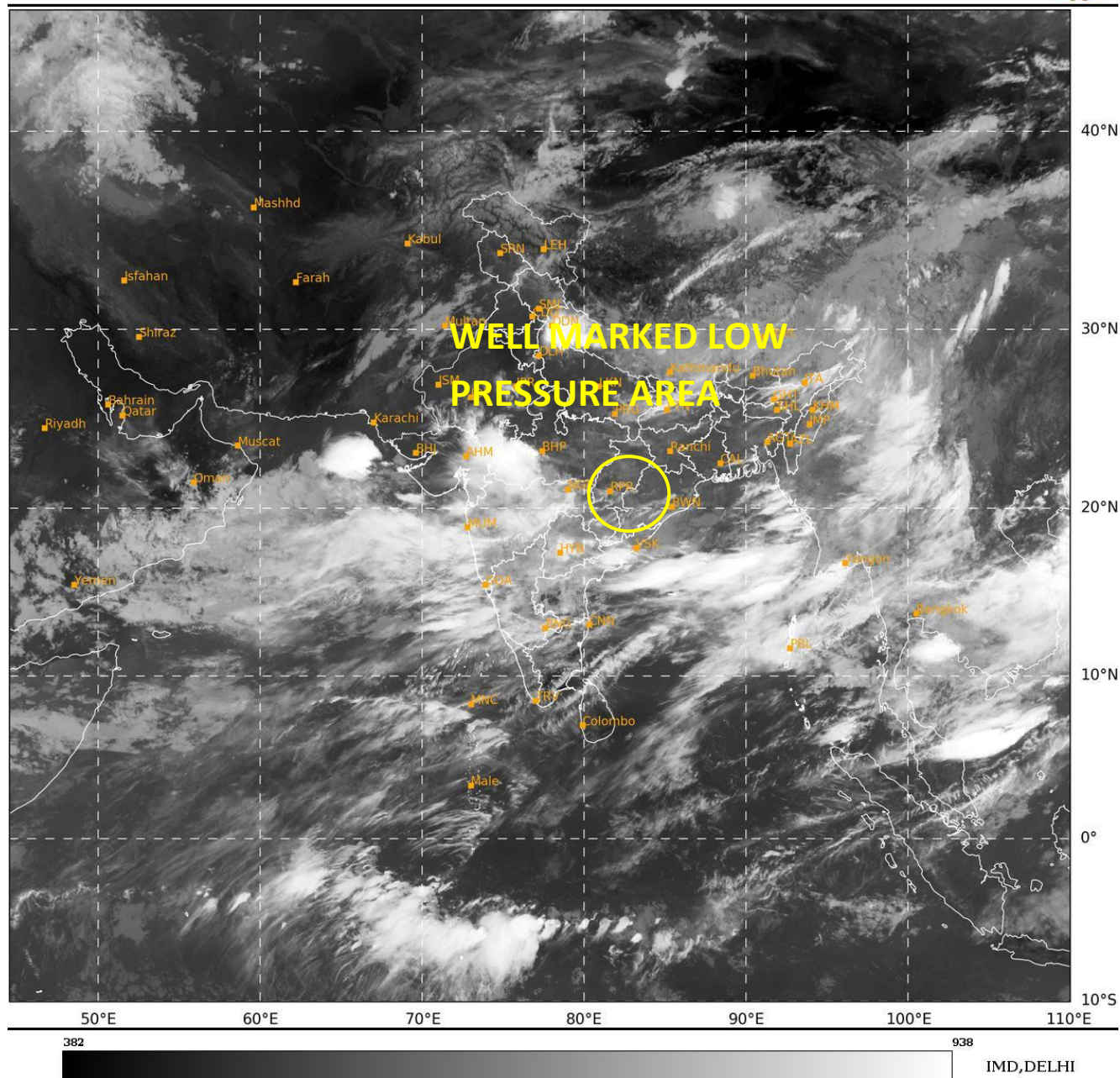
Spatial rainfall distribution: Isolated: <25%, A few: 26-50%, Many: 51-75%, Most: 76-100%

Rainfall amount (mm): Heavy rain: 64.5 – 115.5, Very heavy rain: 115.6 – 204.4, Extremely heavy rain: 204.5 or more.

## Annexure - I

SAT : INSAT-3DR IMG  
IMG\_TIR1 10.8 um  
L1C Mercator

21-07-2024/(0315 to 0342) GMT  
21-07-2024/(0845 to 0912) IST



Contact: Cyclone Warning Division, Office of the Director General of Meteorology, India Meteorological Department, Ministry of Earth Sciences.

E-mail: cyclonewarningdivision@gmail.com, Website: [rsmcnewdelhi.imd.gov.in](http://rsmcnewdelhi.imd.gov.in)

Spatial rainfall distribution: Isolated: <25%, A few: 26-50%, Many: 51-75%, Most: 76-100%

Rainfall amount (mm): Heavy rain: 64.5 – 115.5, Very heavy rain: 115.6 – 204.4, Extremely heavy rain: 204.5 or more.



## OBSERVED TRACK OF DEPRESSION OVER NORTHWEST BAY OF BENGAL DURING 19<sup>th</sup> to 20<sup>th</sup> JULY, 2024.



DATE/TIME IN UTC

IST=UTC + 0530

L: LOW PRESSURE AREA

WML: WELL MARKED LOW PRESSURE AREA

D: DEPRESSION (17-27 KT)

DD: DEEP DEPRESSION (28-33 KT)

CS: CYCLONIC STORM (34-47 KT)

SCS: SEVERE CYCLONIC STORM (48-63KT)

VSCS: VERY SEVERE CYCLONIC STORM (64-89 KT)

ESCS: EXTREMELY SEVERE CYCLONIC STORM (90-119 KT)

SuCS: SUPER CYCLONIC STORM ( $\geq$  120 KT)

● LESS THAN 34 KT

○ 34-47 KT

○  $\geq$  48 KT

— OBSERVED TRACK

— FORECAST TRACK

▲ CONE OF UNCERTAINTY

Contact: Cyclone Warning Division, Office of the Director General of Meteorology, India Meteorological Department, Ministry of Earth Sciences.

E-mail: cyclonewarningdivision@gmail.com, Website: [rsmcnwdelhi.imd.gov.in](http://rsmcnwdelhi.imd.gov.in)

Spatial rainfall distribution: Isolated: <25%, A few: 26-50%, Many: 51-75%, Most: 76-100%

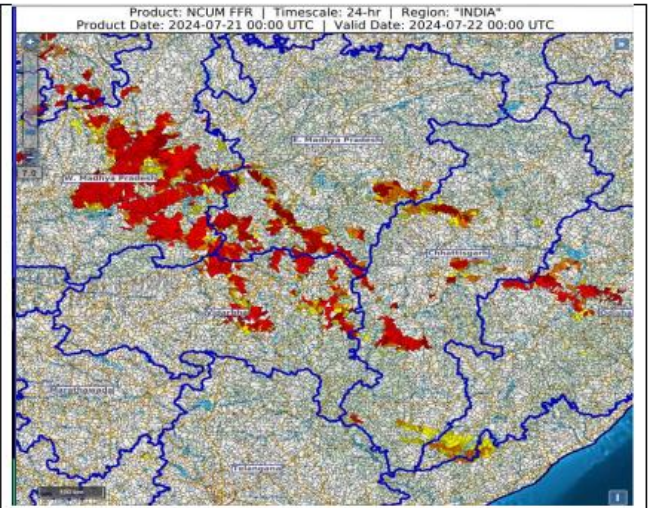
Rainfall amount (mm): Heavy rain: 64.5 – 115.5, Very heavy rain: 115.6 – 204.4, Extremely heavy rain: 204.5 or more.

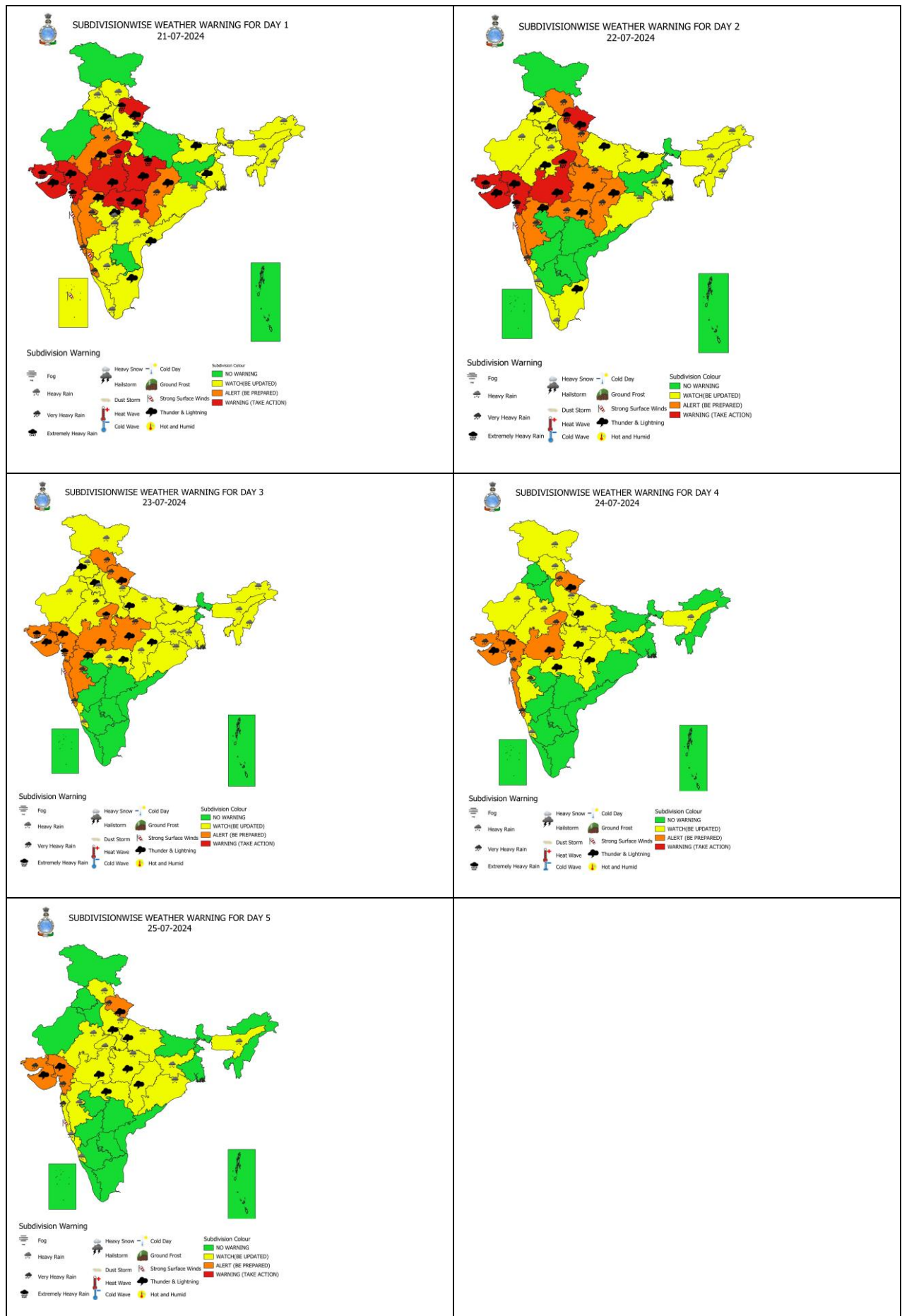


**24 hours Outlook for the Flash Flood Risk (FFR) till 0530 IST of 22-07-2024 :**

**Low to Moderate flash flood risk** likely over few watersheds & neighbourhoods of **Chhattisgarh, East Madhya Pradesh, Vidarbha, West Madhya Pradesh and Odisha** Met Sub-divisions during next 24 hours.

Surface runoff/ Inundation may occur at some fully saturated soils & low-lying areas over AoC as shown in map due to expected rainfall occurrence in next 24 hours.





Contact: Cyclone Warning Division, Office of the Director General of Meteorology, India Meteorological Department, Ministry of Earth Sciences.

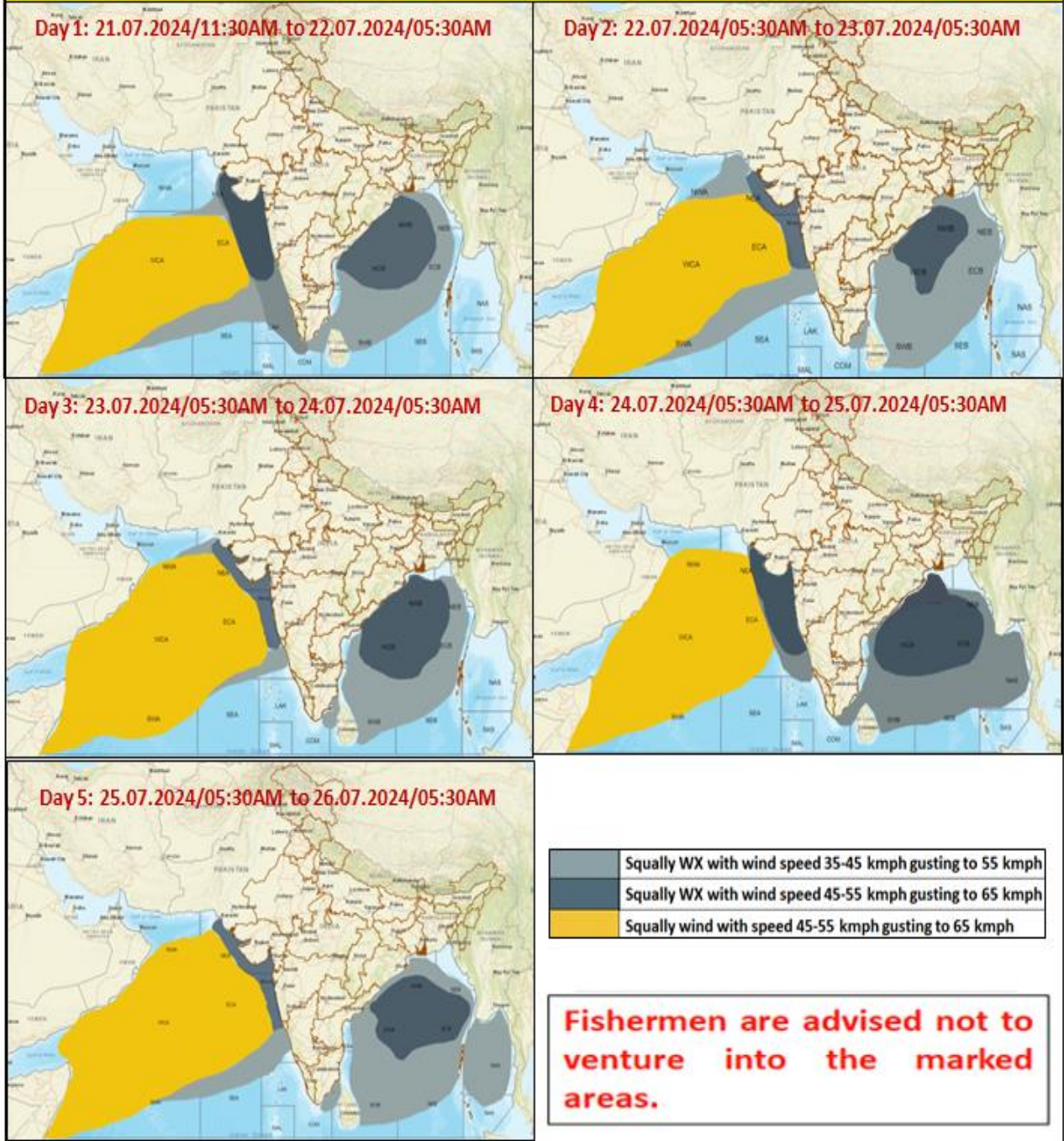
E-mail: cyclonewarningdivision@gmail.com, Website: [rsmcnewdelhi.imd.gov.in](http://rsmcnewdelhi.imd.gov.in)

Spatial rainfall distribution: Isolated: <25%, A few: 26-50%, Many: 51-75%, Most: 76-100%

Rainfall amount (mm): Heavy rain: 64.5 – 115.5, Very heavy rain: 115.6 – 204.4, Extremely heavy rain: 204.5 or more.



## Fishermen Warning Graphics



**24 hours accumulated realized rainfall ending at 0300 UTC of date:**

**21<sup>st</sup> July:**

**Vidarbha:** Nagpur Aerodrome & Gadchiroli-16 each, Gadchiroli-15, Sindewahi & Chandrapur-14 each, Pombhurna, Perseoni, Hingna & Bhamragad-11 each, Bhadravati & Mauda-10 each, Chamorshi, Deoli, Kamptee, Warora, Samudrapur & Ramtek-9 each, Selu, Sironcha, Chimur, Armori, Wani, Saoner, Zarizamni, Tumsar & Wardha-8 each, Amgaon, Hinganghat, Maregaon, Umrer, Ralegaon & Kalmeshwar-7 each

**Chhattisgarh:** Bijapur-21, Gurur-16, Kutaru & Rajnandgaon-14 each, Marri Bangla Deori, Arjunda, Gangalur & Balod-12 each, Gundardehi-11, Bhopalpatnam-10, Lal Bahadur Nagar, Bhairamgarh, Usoor, Dhamtari & Dongargarh-9 each, Nerharpur & Sarona-8 each, Dongargaon, Gidam, Bade Bacheli & Narayanpur-7 each

**Telangana:** Mortad-14, Mallapur, Metpalle & Sarangapurnrl-13 each, Laxmanchanda, Khanpur & Balkonda-12 each, Kammar Palle, Navipet, Bheemgal, Makloor & Nandipet-11 each, Velpur, Ranjal, Armur, Yeda Palle, Jannaram & Nirmal-10 each, Kathlapur, Regonda, Shayampet, Nizamabad, Atmakurwrgl & Jainoor-9 each, Bodhan, Parkal, Aswapuram, Venkatapuram, Asifabad, Chityal, Huzurabad, Gangadhara, Dandepalle & Jaipur-8 each, Sirpuru, Kataram, Manuguru & Dummagudem-7 each

**Odisha:** Athmalik-15, Boden-14, Padampur, Padmapur, Sinapali & Dunguripalli-11 each, Nawapara & Bolangir-10 each, Bangamunda-9, Salebhatta, Gania, Patnagarh, Binika, Kantamal, Agalpur & Ullunda-8 each, Tarva, Mathili, Khariar, Boudhgarh, Barpalli, Gaisilet, Chitrakunda K Guma, Khairamal, Jaipatna & Komna-7 each