



Government of India  
Ministry of Earth Sciences



India Meteorological Department

Time of issue: 1530 hours IST

Dated: 8<sup>th</sup> January, 2026

### Press Release-2

#### Sub: Deep Depression over southwest Bay of Bengal and adjoining East Equatorial Indian Ocean

Yesterday's depression over southeast Bay of Bengal (BoB) and adjoining East Equatorial Indian Ocean (EIO) moved west-northwestwards and intensified into a deep depression in the early morning (0530 hrs IST) of today, the 8<sup>th</sup> January 2026 over southwest & adjoining areas of southeast BoB & East EIO. Continuing to move further west-northwestwards, it lay centred at 1130 hours IST of today, the 8<sup>th</sup> January, 2026 over southwest and adjoining East EIO, near latitude 5.7°N and longitude 84.5°E, about 320 km east-southeast of Pottuvil (Sri Lanka), 380 km east-southeast of Hambantota (Sri Lanka), 380 km east-southeast of Batticaloa (Sri Lanka), 480 km southeast of Trincomalee (Sri Lanka), 780 km southeast of Karaikal (Puducherry) and 940 km south-southeast of Chennai (Tamil Nadu).

It is very likely to move west-northwestwards across southwest Bay of Bengal during next 36 hours and cross Sri Lanka coast between Hambantota and Batticaloa around evening/night of tomorrow, the 9<sup>th</sup> January 2026.

Forecast track and intensity is given in Table below:

Date/Time (IST)	Position (Lat. °N/ long. °E)	Maximum sustained surface wind speed (Kmph)	Category of cyclonic disturbance
08.01.26/1130	5.7/84.5	50-60 gusting to 70	Deep Depression
08.01.26/1730	6.0/84.0	50-60 gusting to 70	Deep Depression
08.01.26/2330	6.3/83.5	50-60 gusting to 70	Deep Depression
08.01.26/0530	6.6/82.9	50-60 gusting to 70	Deep Depression
09.01.26/1130	6.8/82.3	50-60 gusting to 70	Deep Depression
09.01.26/2330	7.0/81.5	40-50 gusting to 60	Depression
10.01.26/1130	6.9/80.7	30-40 gusting to 50	Well marked low pressure area

#### Rainfall Warning:

- ❖ **Tamilnadu, Puducherry and Karaikal:** Light to moderate rainfall at most places with heavy to very heavy rainfall at isolated places is very likely over coastal Tamilnadu on 9<sup>th</sup> and 10<sup>th</sup> January, 2026.
- ❖ **Kerala and Mahe:** Light to moderate rainfall at many places with **heavy rainfall** at isolated places is very likely on 10<sup>th</sup> January.

#### (ii) Wind Warning:

##### (a) Southwest Bay of Bengal and adjoining areas of East Equatorial Indian Ocean:

Squally weather with wind speed reaching 50-60 gusting to 70 kmph is likely to prevail till 9<sup>th</sup> evening. It would gradually decrease then, becoming 40-50 gusting to 60 kmph by 9<sup>th</sup> midnight and 35-45 gusting to 55 kmph by 10<sup>th</sup> early morning.

**(b) Southeast Bay of Bengal:**

Squally weather with wind speed reaching 50-60 gusting to 70 kmph is very likely to prevail over adjoining areas of southeast Bay of Bengal and 45-55 gusting to 65 kmph over remaining areas of southeast Bay of Bengal on 8<sup>th</sup> January, 2026 and gradually decrease thereafter.

**(c) Along & off Sri Lanka coast, Gulf of Mannar and adjoining Comorin Area:**

Squally weather with wind speed reaching 45-55 gusting to 65 kmph is prevailing over the region. It would increase gradually becoming 50-60 gusting to 70 kmph on 9<sup>th</sup> and gradually decrease thereafter becoming 40-50 gusting to 60 kmph by 10<sup>th</sup> morning.

**(d) Along & off Tamil Nadu - Puducherry coasts**

Squally weather with wind speed reaching 35-45 gusting to 55 kmph is very likely to prevail along and off South Tamil Nadu coast on 8<sup>th</sup> January. It would gradually increase thereafter and squally winds reaching 40 – 50 gusting to 60 kmph are very likely to prevail from 9<sup>th</sup> morning to 10<sup>th</sup> morning. It would gradually decrease thereafter.

Squally weather with wind speed reaching 35-45 gusting to 55 kmph is very likely to prevail along and off North Tamil Nadu & Puducherry coasts on 9<sup>th</sup> & 10<sup>th</sup> January and decrease thereafter.

**(iii) Sea Condition:**

- ❖ Sea condition is very likely to be very rough over southwest Bay of Bengal & adjoining areas of East Equatorial Indian Ocean and along & off Sri Lanka coast, Gulf of Mannar and adjoining Comorin area during 8<sup>th</sup> to 10<sup>th</sup> January.
- ❖ Sea condition is very likely to be Rough to very rough along & off Tamil Nadu-Puducherry coasts during 8<sup>th</sup> and 10<sup>th</sup> January and improve gradually thereafter.
- ❖ Sea condition is very likely to be very rough to rough over southeast Bay of Bengal on 8<sup>th</sup> January.

**(iv) Fishermen Warning:**

Fishermen are advised not to venture into southwest Bay of Bengal & adjoining East Equatorial Indian Ocean during 08<sup>th</sup> to 10<sup>th</sup>; adjoining areas of southeast Bay of Bengal on 8<sup>th</sup> & 9<sup>th</sup> January; along & off Sri Lanka coast, Gulf of Mannar and adjoining Comorin, South Tamil Nadu coast during 8<sup>th</sup> to 10<sup>th</sup> January and along & off North Tamil Nadu-Puducherry coast during 9<sup>th</sup> and 10<sup>th</sup> January.

**(v) Impact Expected over south coastal Tamil Nadu and Karaikal due to heavy rainfall**

- ❖ Localized Flooding of roads, water logging in low lying areas and closure of underpasses mainly in urban areas of the above region.
- ❖ Occasional reduction in visibility due to heavy rainfall.
- ❖ Disruption of traffic in city areas and roadways due to water logging in roads and poor visibility due to heavy rain leading to increased travel time and incidents
- ❖ Likely disruption of marine and inland water transportation like small boats and trawlers.
- ❖ Damage to horticulture and standing crops in some areas due to inundation and wind.

**(vi) Action Suggested for coastal Tamil Nadu-Puducherry and Karaikal**

- Judicious regulation of onshore/offshore, Port and maritime activities
- Judicious regulation of tourism activities in coastal areas.
- Judicious regulation of surface transports including railways and roadways.
- Avoid going to areas that face the water logging problems often.

Kindly visit [www.mausam.imd.gov.in](http://www.mausam.imd.gov.in) and [www.rsmcnewdelhi.imd.gov.in](http://www.rsmcnewdelhi.imd.gov.in) for updates.

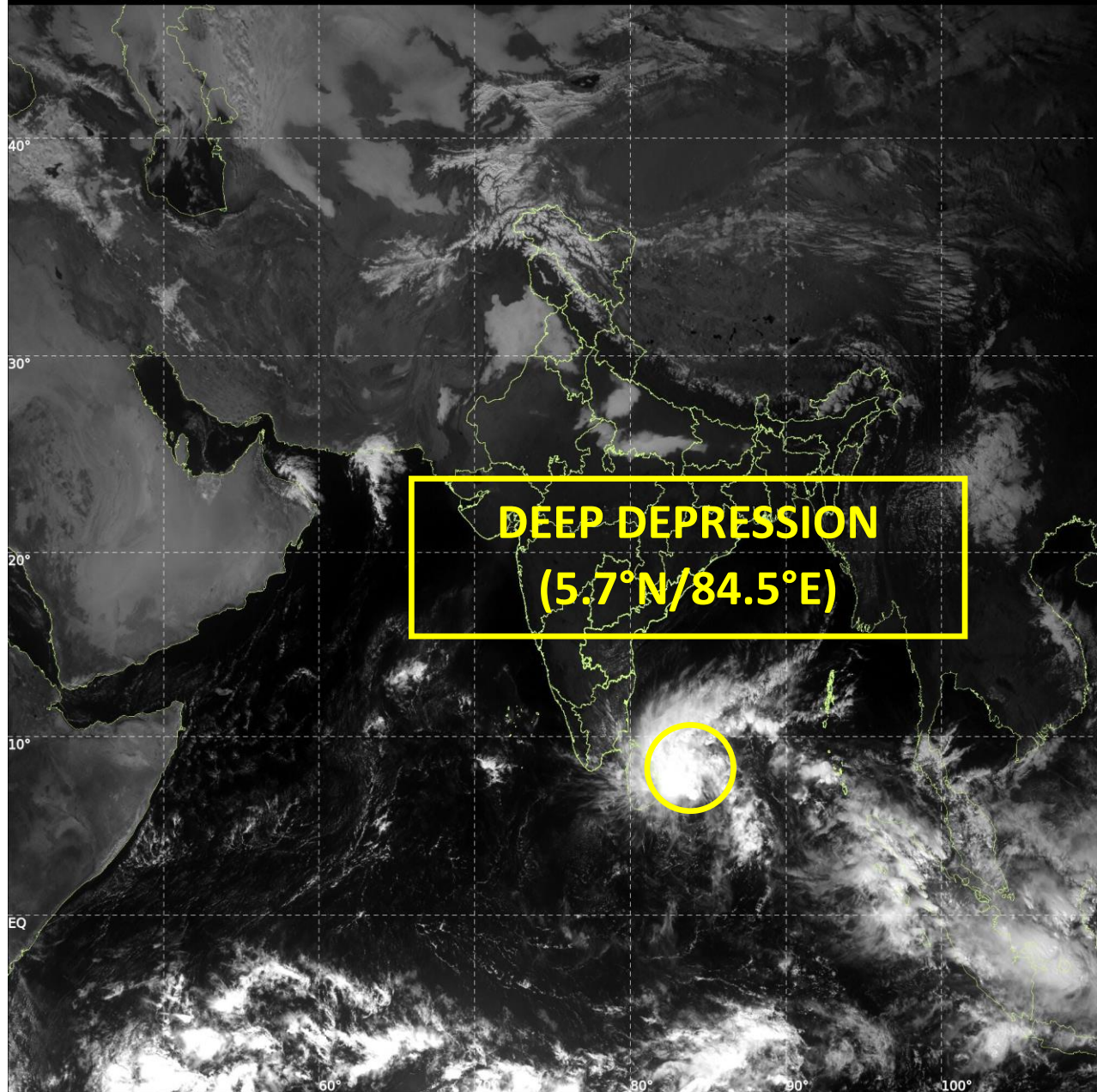
Next Press Release will be issued at 1430 hrs IST of tomorrow, the 9<sup>th</sup> January, 2026.



INSAT-3DS IMG, Visible Count @ 0.65  $\mu\text{m}$   
GMT:08-01-2026/(0800-0827) IST:08-01-2026/(1330-1357)  
L1C MERCATOR (LINEAR STRETCH: 0.5%)

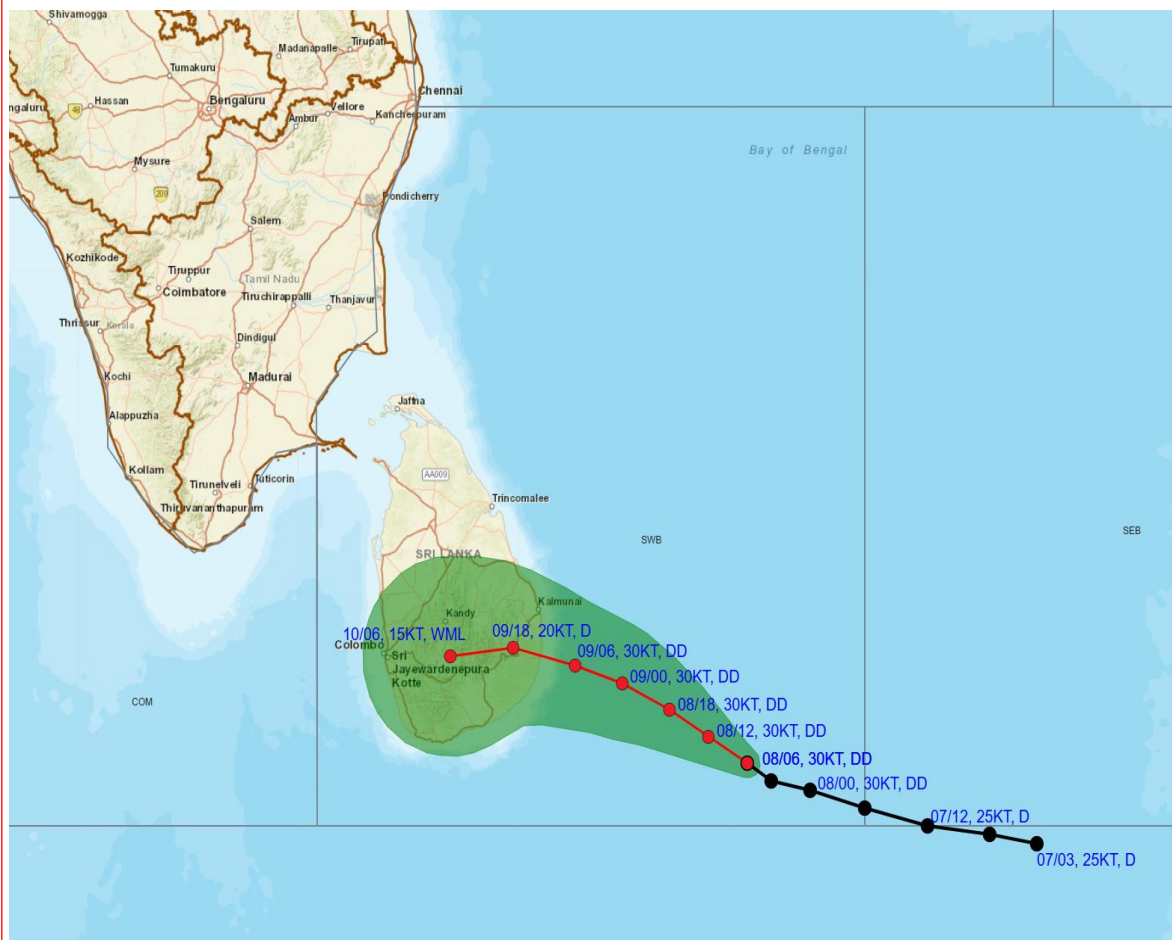
67

394





# OBSERVED AND FORECAST TRACK ALONGWITH CONE OF UNCERTAINTY OF DEEP DEPRESSION OVER SOUTHWEST BAY OF BENGAL & ADJOINING EAST EQUATORIAL INDIAN OCEAN BASED ON 0600 UTC (1130 Hrs. IST) OF 8TH JANUARY 2026.



DATE/TIME IN UTC  
IST=UTC + 0530  
L: LOW PRESSURE AREA  
WML: WELL MARKED LOW PRESSURE AREA  
D: DEPRESSION (17-27 KT)  
DD: DEEP DEPRESSION (28-33 KT)  
CS: CYCLONIC STORM (34-47 KT)  
SCS: SEVERE CYCLONIC STORM (48-63KT)  
VSCS: VERY SEVERE CYCLONIC STORM (64-89 KT)  
ESCS: EXTREMELY SEVERE CYCLONIC STORM (90-119 KT)  
SuCS: SUPER CYCLONIC STORM (≥ 120 KT)

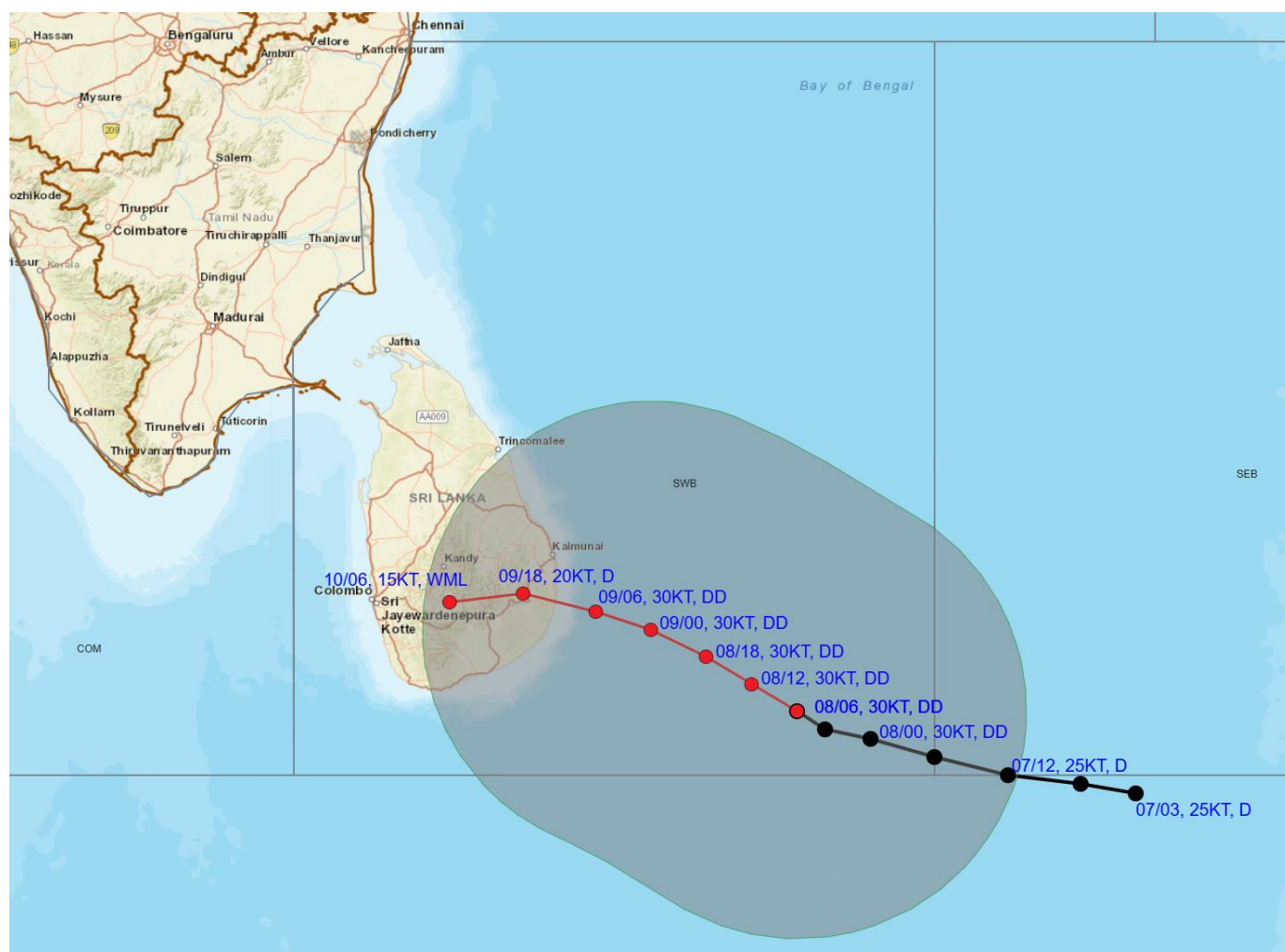
● LESS THAN 34 KT  
○ 34-47 KT  
○ ≥ 48 KT  
— OBSERVED TRACK  
— FORECAST TRACK  
▲ CONE OF UNCERTAINTY

Forecast distance (km) and direction of the centre from nearest 5 coastal stations								
Forecast Date and Time	Lead Period	Lat	Lon	Station 1	Station 2	Station 3	Station 4	Station 5
08.01.26/0600	0	5.7	84.5	POTTUVIL (323,ESE)	HAMBANTOTA (376,E)	BATTICALOA (382,SE)	BADULLA (408,ESE)	BANDARAWELA (409,ESE)
08.01.26/1200	6	6.0	84.0	POTTUVIL (259,ESE)	HAMBANTOTA (318,E)	BATTICALOA (318,SE)	BADULLA (344,ESE)	BANDARAWELA (346,ESE)
08.01.26/1800	12	6.3	83.5	POTTUVIL (195,ESE)	BATTICALOA (254,SE)	HAMBANTOTA (263,E)	BADULLA (281,ESE)	BANDARAWELA (285,ESE)
09.01.26/0000	18	6.6	82.9	POTTUVIL (122,ESE)	BATTICALOA (182,SE)	HAMBANTOTA (203,ENE)	BADULLA (209,ESE)	BANDARAWELA (213,E)
09.01.26/0600	24	6.8	82.3	POTTUVIL (52,E)	BATTICALOA (122,SSE)	BADULLA (140,E)	BANDARAWELA (146,E)	HAMBANTOTA (150,ENE)
09.01.26/1800	36	7.0	81.5	POTTUVIL (39,WNW)	BADULLA (50,E)	BANDARAWELA (60,ENE)	NUWARA ELIYA (81,E)	BATTICALOA (83,SSW)
10.01.26/0600	48	6.9	80.7	NUWARA ELIYA (10,SW)	BANDARAWELA (32,WNW)	BADULLA (40,WSW)	RATNAPURA (41,NE)	KANDY (49,S)





# **OBSERVED AND FORECAST TRACK ALONGWITH QUADRANT WIND DISTRIBUTION OF DEEP DEPRESSION OVER SOUTHWEST BAY OF BENGAL & ADJOINING EAST EQUATORIAL INDIAN OCEAN BASED ON 0600 UTC (1130 Hrs. IST) OF 8<sup>TH</sup> JANUARY 2026.**



DATE/TIME IN UTC

IST=UTC + 0530

L: LOW PRESSURE AREA

WML: WELL MARKED LOW PRESSURE AREA

D: DEPRESSION (17-27 KT)

DD: DEEP DEPRESSION (28-33 KT)

CS: CYCLONIC STORM (34-47 KT)

SCS: SEVERE CYCLONIC STORM (48-63KT)

VSCS: VERY SEVERE CYCLONIC STORM (64-89 KT)

ESCS: EXTREMELY SEVERE CYCLONIC STORM (90-119 KT)

SuCS: SUPER CYCLONIC STORM (≥ 120 KT)

● LESS THAN 34 KT

● 34-47 KT

● ≥ 48 KT

— OBSERVED TRACK

— FORECAST TRACK

▲ CONE OF UNCERTAINTY

AREA OF MAXIMUM SUSTAINED WIND SPEED:

■ 28-33 KT (52-61 KMPH)

■ 34-49 KT (62-91 KMPH)

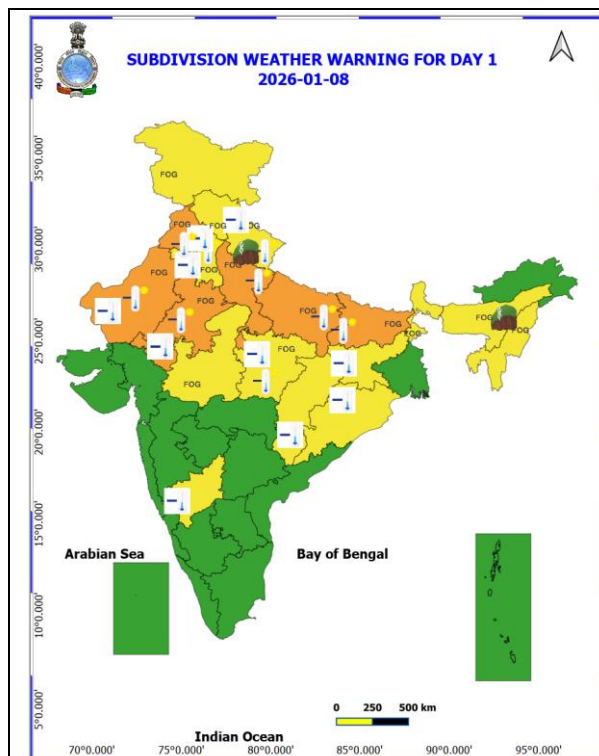
■ 50-63 KT (92-117 KMPH)

■ ≥ 64 KT (≥118 KMPH)

## **IMPACT OVER THE SEA**

MSW (knot/kmph)	Impact	Action
28-33 (52-61)	Very rough seas	Total suspension of fishing operations
34-49 (62-91)	High to very high seas	Total suspension of fishing operations
50-63 (92-117)	Very high seas	Total suspension of fishing operations
≥ 64 (≥118)	Phenomenal	Total suspension of fishing operations

WARNING GRAPHICS



Heavy Rain

Very Heavy Rain

Extremely Heavy Rain

#### COLOUR CODED WARNING

No Warning (No Action)

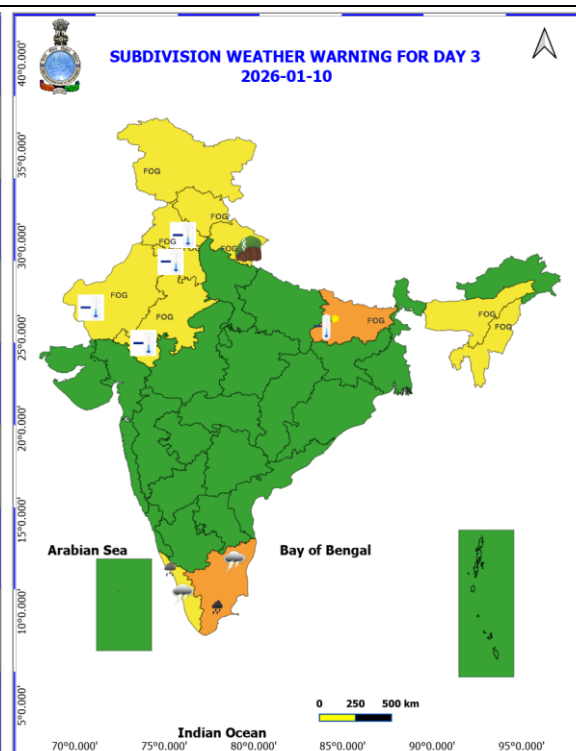
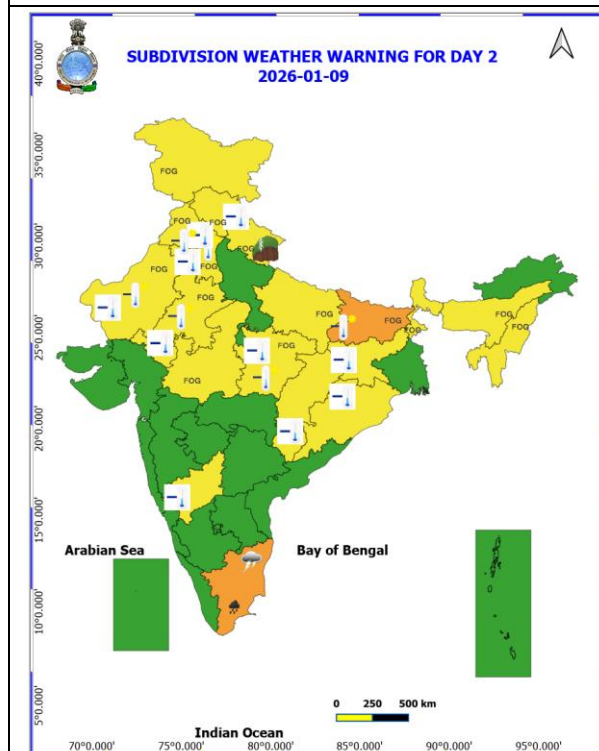
Watch (Be Aware)

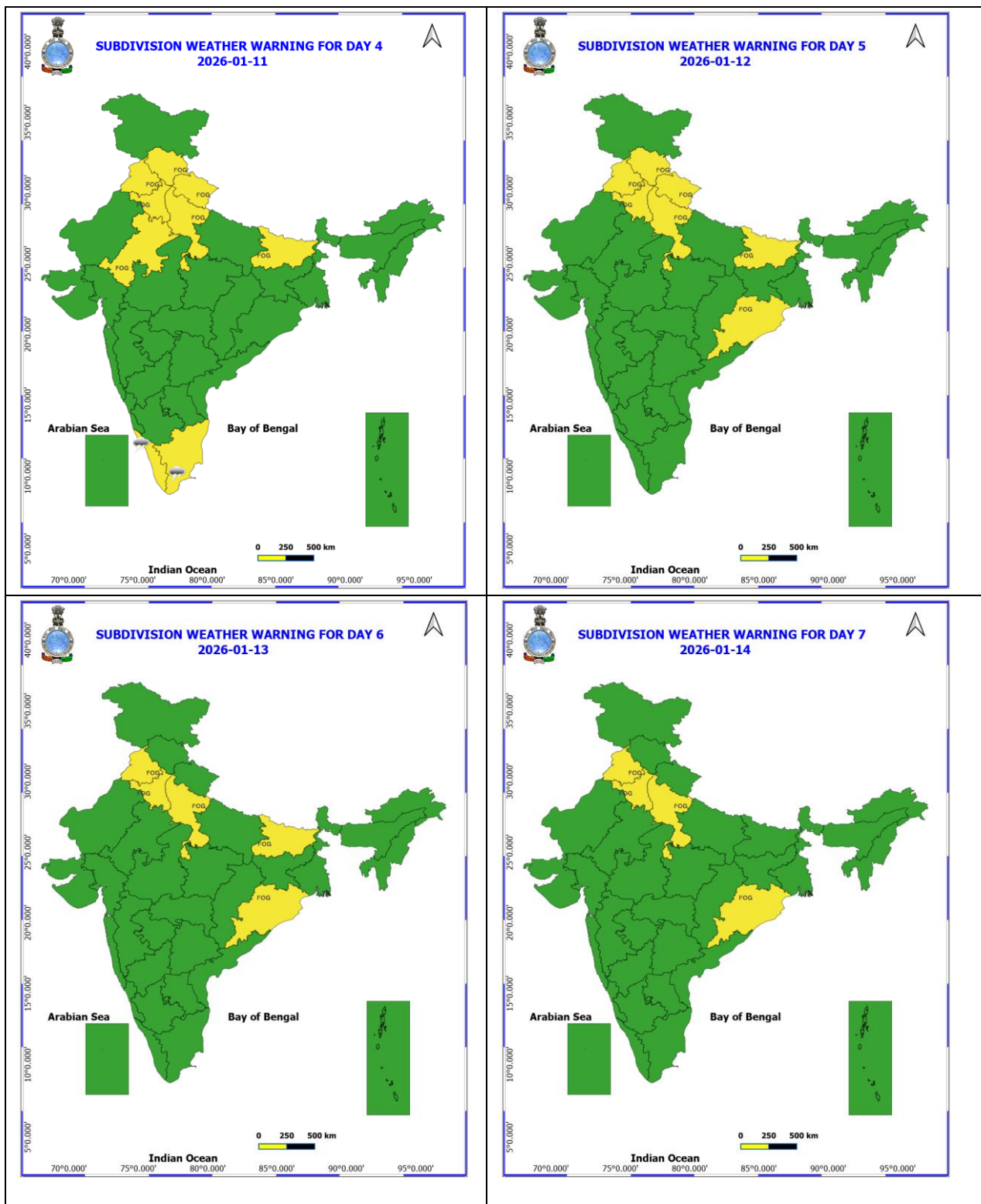
Alert (Be Prepared To Take Action)

Warning (Take Action)

#### Probabilistic Forecast

Terms	Probability of Occurrence (%)
Unlikely	< 25
Likely	25 - 50
Very Likely	50 - 75
Most Likely	> 75





- Action may be taken based on ORANGE AND RED COLOUR warnings.
- Vulnerable regions likely urban and hilly areas action may be initiated for heavy rainfall warning.
- As the lead period increases forecast accuracy decreases.



## Fishermen Warning Graphics

