



Government of India
Ministry of Earth Sciences



India Meteorological Department

PRESS RELEASE-3

Time of issue: 1600 hours IST

Dated: 30th Nov, 2025

Subject: Cyclonic Storm Ditwah [Pronunciation: Ditwah] over southwest Bay of Bengal and adjoining North Tamil Nadu-Puducherry coasts: Cyclone Warning for north Tamil Nadu & Puducherry and adjoining south Andhra Pradesh coasts (Red Message)

Yesterday's **Cyclonic Storm Ditwah [Pronunciation: Ditwah]** over southwest Bay of Bengal and adjoining north Sri Lanka moved north-northwestwards and lay centered at 1130 hrs IST of today, the 30th November 2025 over the same region, near latitude 11.5°N and longitude 80.6°E, , about 100 km east-southeast of Cuddalore (India), 110 km northeast of Karaikal (India), 100 km east-southeast of Puducherry (India), 150 km north-northeast of Vedaranniyam (India) and 170 km south-southeast of Chennai (India). The minimum distance of the centre of the cyclone from north Tamil Nadu-Puducherry coasts is about 80km

It is very likely to move nearly northwards parallel to North Tamil Nadu-Puducherry coasts during next 24 hours. While moving northwards the cyclonic storm will be centered over southwest Bay of Bengal within a minimum distance of 30 km from the Tamil Nadu-Puducherry coastline by evening of today, the 30th November respectively.

The cyclonic storm is continuously monitored by the Doppler Weather Radars (DWRs) at Karaikal and Chennai.

Forecast track and intensity are given in Table below

Date/Time (IST)	Position (Lat. °N/ Long. °E)	Maximum Sustained Surface Wind Speed (Kmph)	Category Of Cyclonic Disturbance
30.11.25/1130	11.5/80.6	65-75 gusting to 85	Cyclonic Storm
30.11.25/1730	12.0/80.5	55-65 gusting to 75	Deep Depression
30.11.25/2330	12.6/80.5	50-60 gusting to 70	Deep Depression
01.12.25/0530	13.3/80.5	45-55 gusting to 65	Depression

(i) Rainfall Warning:

- ❖ **Tamil Nadu & Puducherry:** Light to moderate rainfall at most places with **heavy to very heavy rainfall at a few places & extremely heavy falls (>20 cm) at isolated places** likely over north coastal Tamil Nadu & Puducherry and isolated heavy rainfall likely over north interior Tamil Nadu on 30th November, 2025. Thereafter, rainfall would gradually decrease to light to moderate at many places with **heavy rainfall** at isolated places on 1st December over North Tamil Nadu.
- ❖ **South Coastal Andhra Pradesh & Rayalaseema:** Light to moderate rainfall at most places with **heavy to very heavy rainfall at a few places & extremely heavy falls at isolated places** (over Southern districts of South coastal Andhra Pradesh) **on 30th November**. It would then decrease gradually becoming light to moderate rainfall at many places with **heavy rainfall** at isolated places on 1st December.

- ❖ **Kerala & Mahe:** Light to moderate rainfall at many places with **heavy rainfall** at isolated places on 30th November.

(ii) Wind Warning:

(a) Along & off north Tamil Nadu & Puducherry Coasts

Gale wind speed reaching 70-80 gusting to 90 kmph is prevailing. Thereafter it is likely to decrease gradually becoming squally wind speed reaching 55-65 gusting to 75 kmph by evening of today, the 30th November and 45-55 gusting to 65 kmph by 1st December morning.

(b) Along & off south Tamil Nadu coast

Gale wind speed reaching 60-70 gusting to 80 kmph is likely to prevail till 30th November noon. Thereafter it is likely to decrease gradually becoming squally wind speed reaching 50-60 gusting to 70 kmph by evening of today and 45-55 gusting to 65 kmph by morning of 1st December.

(c) Southwest Bay of Bengal, Gulf of Mannar, Comorin area and along & off north Sri Lanka coasts

Gale wind speed reaching 60-70 gusting to 80 kmph is likely to prevail till 30th November noon. Thereafter it is likely to decrease gradually becoming squally wind speed reaching 50-60 gusting to 70 kmph by evening of today and 45-55 gusting to 65 kmph by morning of 1st December.

(d) Adjoining Westcentral Bay of Bengal and along & off south Andhra Pradesh coast:

Squally wind speed reaching 55-65 kmph gusting to 75 kmph is likely to prevail till 30th afternoon. Thereafter, it is likely to decrease becoming squally wind speed reaching 45-55 kmph gusting to 65 kmph on 01st December morning.

(iii) Sea Condition:

(a) Along & off north Tamil Nadu & Puducherry Coasts

Sea condition is very likely to be High till 30th evening. It is very likely to improve gradually becoming very rough to rough by 1st December morning and gradually improve thereafter.

(b) Along & off south Tamil Nadu coast

Sea condition is very likely to be High till 30th November noon. It is very likely to improve gradually becoming very rough to rough by morning of 1st December and gradually improve thereafter.

(c) Southwest Bay of Bengal, Gulf of Mannar, Comorin area and along & off Sri Lanka coasts

Sea condition is very likely to be High till 30th November noon. It is very likely to improve gradually becoming very rough to rough by morning of 1st December and gradually improve thereafter.

(d) Adjoining Westcentral Bay of Bengal and along & off south Andhra Pradesh coast:

Very rough to rough sea conditions are very likely till evening of 30th November. It is likely to improve gradually becoming rough by 01st December morning and gradually improve thereafter.

(iv) Storm Surge Warning:

Storm surge of height about 0.5 m to 1m above the astronomical tide (0.4 m during high tide) is likely to inundate the low-lying coastal areas of Tamil Nadu- Puducherry till 30th afternoon.

(v) Fishermen Warning:

- (a) Total suspension of fishing operations in coastal areas of Sri Lanka, Tamil Nadu, Puducherry and south Andhra Pradesh coasts till 01st December.
- (b) **Fishermen are advised not to venture into**
- (i) Southwest Bay of Bengal, Gulf of Mannar, Comorin area and along & off Tamil Nadu, Puducherry & Sri Lanka coasts till 01st December.
- (ii) Adjoining areas of westcentral Bay of Bengal and along & off Andhra Pradesh coast till 2nd December.
- (c) Those out at sea should avoid southwest Bay of Bengal, Gulf of Mannar, Comorin area and along & off Tamil Nadu, Puducherry, south Andhra Pradesh & Sri Lanka coasts; adjoining westcentral Bay of Bengal till 01st December.

(vi) Impact Expected and Action Suggested due to heavy rain and strong winds (Tamil Nadu, Puducherry and south Andhra Pradesh) on 30th November, 2025

Impact Expected

- ❖ Damage to thatched houses. Thatched Roof tops may blow off.
- ❖ Damage to power and communication lines. Damage to electric poles.
- ❖ Breaking of tree branches, uprooting of small trees. Large-scale damage to banana and papaya trees. Dead limbs may blow from trees.
- ❖ Damage to paddy crops, horticultural and standing crops due to inundation, winds, and sea spray.
- ❖ Damage to Kutcha roads and some damage to Pucca roads and culverts.
- ❖ Inundation of low-lying areas in coastal districts due to heavy rainfall and flash flood. Flooding of escape routes and damage to salt pans.
- ❖ Localized Flooding of roads, water logging in low lying areas. Sub-merging of power-stations.
- ❖ Riverine flooding in some river catchments.
- ❖ Possibility of coastal flooding and coastal erosion is also very likely over coastal districts of Tamil Nadu, Puducherry and south Andhra Pradesh.
- ❖ Occasional reduction in visibility due to heavy rainfall.
- ❖ Disruption of traffic due to water logging and squally/gale winds
- ❖ Localized Landslides/Mudslides.

Action suggested:

- ❖ Total suspension of fishing operations.
- ❖ Coastal hutment dwellers to be moved to safer places. People in affected areas to remain indoors.
- ❖ Take safe shelters; do not take shelter under trees, as there could be lightning.
- ❖ Movement in motor boats unsafe.
- ❖ Judicious regulation of offshore/onshore operations
- ❖ People are advised to keep a watch on the weather for worsening conditions and be ready to move to safer places accordingly.
- ❖ In case of expected lightning, unplug electrical/ electronic appliances, immediately, get out of water bodies and keep away from all the objects that conduct electricity.
- ❖ Tourism and recreational activities to be regulated.
- ❖ Surface transport and helicopter services to be regulated.

Realized Weather:**Rainfall:**

Light to moderate at most places with heavy to very heavy rainfall at a few places and extremely heavy rainfall at isolated places occurred during past 24 hours ending at 0830 hours IST of 30th November. The chief amounts of rainfall (cm) accumulated during past 24 hours recorded at 0830 hours IST of 30th November, 2025 are given in ANNEXURE-1.

Wind:

The maximum sustained wind (MSW) speed of 70-80 kmph gusting to 90 kmph prevailed over coastal Tamil Nadu – Puducherry on 29th November. The recorded highest MSW kmph are given below.

Shivaganga: 76 kmph (2230 hrs IST, 29th Nov.), Nathan ISRO: 68 kmph (1300 hrs IST, 29th Nov.), Nagapattinam: 67 kmph (1430 hrs IST, 29th Nov.) and Karaikal: 60 kmph (1600 hrs IST, 29th Nov.)

Storm Surge:

Storm surge of height 0.5 m – 1.0 m above astronomical tide inundated low lying areas of coastal Tamil Nadu – Puducherry on 29th November. Significant wave height of 1.8 m was observed near Pamban bridge.

Kindly visit www.rsmcnewdelhi.imd.gov.in and www.mausam.imd.gov.in for updates on the system.

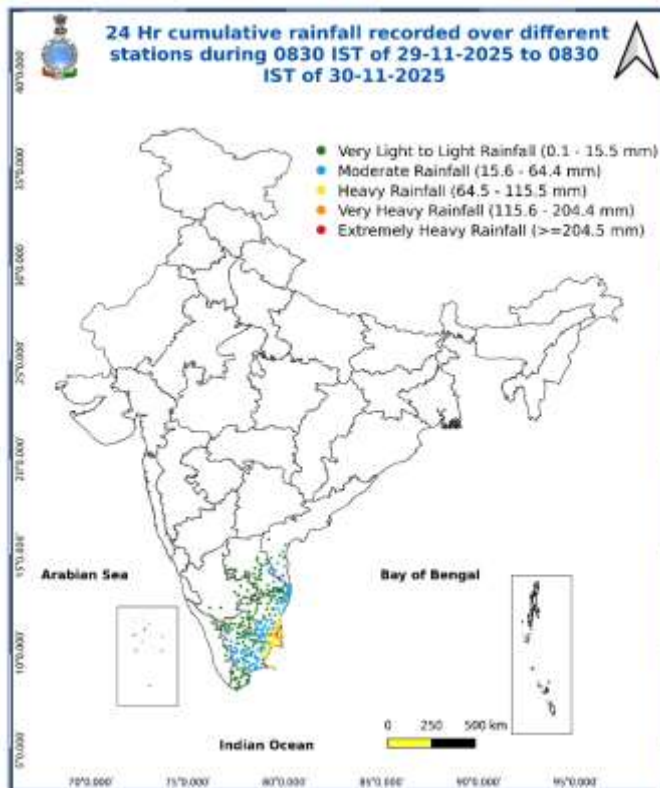
Next Press Release will be issued at 1430 hrs IST of tomorrow, the 1st December, 2025.

Significant 24 hours accumulated rainfall (cm) recorded at 0830 hours IST of 30th November, 2025 over different stations (districts) are given below:

Tamil Nadu, Puducherry & Karaikal:

Thiruvengadu (Myladuthurai) 23, Karaikal (Karaikal) 19; Sembanarkoil PWD (Mayiladuthurai) 17; Mayiladuthurai AWS (Mayiladuthurai), Nagapattinam (Nagapattinam) 15 Each; Mayiladuthurai (Mayiladuthurai), Sirkali (Mayiladuthurai), Tiruvarur (Tiruvarur) 14 Each; Tondi (Ramanathapuram), Tirupoondi (Nagapattinam), Thangachimadam (Ramanathapuram) 13 Each; Sethiathope (Cuddalore), Vedaranyam (Nagapattinam), Nannilam (Tiruvarur), Velankanni (Nagapattinam), Kodiayakarai (Nagapattinam), Kurungulam (Thanjavur) 12 Each; Srimushnam (Cuddalore), Thiruthuraiipoondi (Tiruvarur), Tiruvarur AWS (Tiruvarur), Thalaigayyer (Nagapattinam), Thirukuvalai (Nagapattinam), Neivasal Thenpathi (Thanjavur), Echanviduthi (Thanjavur) 11 Each; Cuddalore (Cuddalore), Parangipettai (Cuddalore), Kollidam (Mayiladuthurai), Tiruvadana (Ramanathapuram), Orthanad (Thanjavur), Mannargudi (Tiruvarur), Mimisal (Pudukkottai), Collectorate (Cuddalore), Theerthandathanam (Ramanathapuram) 10 Each; Chidambaram (Cuddalore), Rameswaram (Ramanathapuram), Pattukottai (Thanjavur), Peravurani (Thanjavur), Thiruvidaimaruthur (Thanjavur), Needamangalam (Tiruvarur), Valangaiman (Tiruvarur), Manalmedu (Mayiladuthurai), Avudayarkoil (Pudukkottai), Vattanam (Ramanathapuram), Ayyampettai (Thanjavur), Budalur (Thanjavur), Vadakuthu (Cuddalore), Ayinkudi (Pudukkottai), Nagudi (Pudukkottai), Vettikadu (Thanjavur) 9 Each; Arantangi (Pudukkottai), Pamban (Ramanathapuram), Madukkur (Thanjavur), Thanjavur (Thanjavur), Tiruvaiyaru (Thanjavur), Sivakasi (Virudhunagar), Aduthurai AWS (Thanjavur), Thanjavur PTO (Thanjavur), Bhuvanagiri (Cuddalore), Mandapam (Ramanathapuram), Manjalaru (Thanjavur), Annamalai Nagar (Cuddalore), Lalpet (Cuddalore), Nandhiyar Head (Trichy) 8 Each; K.m.koil (Cuddalore), Mahabalipuram (Chengalpattu), Tarangambadi (Mayiladuthurai), Puducherry (Puducherry), Alangudi (Pudukkottai), Pudukottai (Pudukkottai), Devakottai (Sivaganga), Adirampatnam (Thanjavur), Vallam (Thanjavur), Muthupet (Tiruvarur), Pandavaiyar Head (Tiruvarur), Kodavasal (Tiruvarur), Kothavacherry (Cuddalore), Lower Anaicut (Thanjavur) 7 Each;

N.B.: Heavy rainfall (7-11 cm); Very Heavy rainfall (12-20 cm) and Extremely Heavy rainfall (>20 cm)

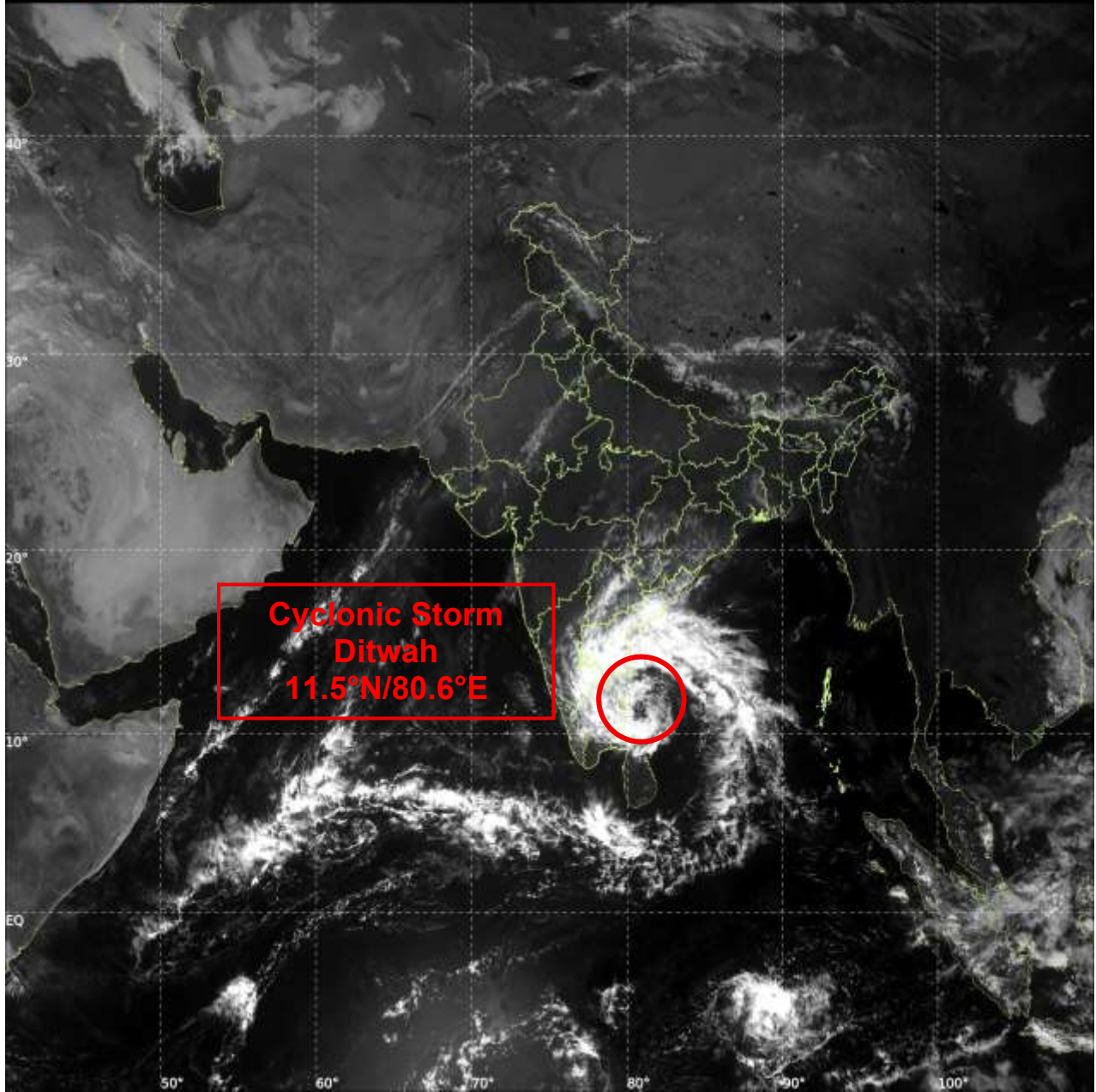




INSAT-3DS IMG, Visible Count @ 0.65 μm
GMT:30-11-2025/(0800-0827) IST:30-11-2025/(1330-1357)
LIC MERCATOR (LINEAR STRETCH: 0.5%)

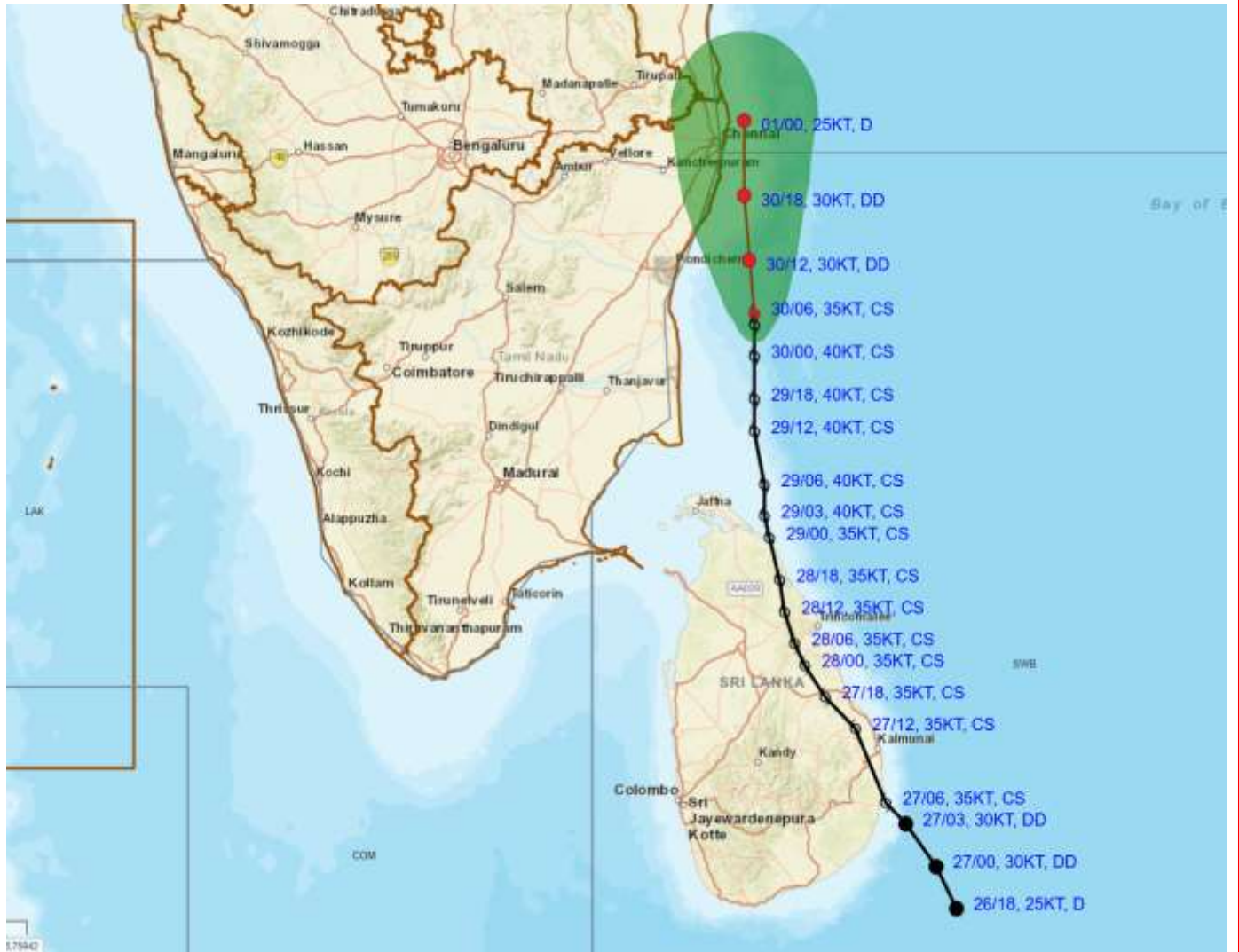
61

319





OBSERVED AND FORECAST TRACK OF CYCLONIC STORM "DITWAH" OVER SOUTHWEST BAY OF BENGAL AND ADJOINING NORTH TAMILNADU-PUDUCHERRY COASTS BASED ON 0600 UTC (1130 Hrs. IST) OF 30TH NOVEMBER 2025



DATE/TIME IN UTC
 IST=UTC + 0530
 L: LOW PRESSURE AREA
 WML: WELL MARKED LOW PRESSURE AREA
 D: DEPRESSION (17-27 KT)
 DD: DEEP DEPRESSION (28-33 KT)
 CS: CYCLONIC STORM (34-47 KT)
 SCS: SEVERE CYCLONIC STORM (48-63KT)
 VSCS: VERY SEVERE CYCLONIC STORM (64-89 KT)
 ESCS: EXTREMELY SEVERE CYCLONIC STORM (90-119 KT)
 SuCS: SUPER CYCLONIC STORM \geq 120 KT

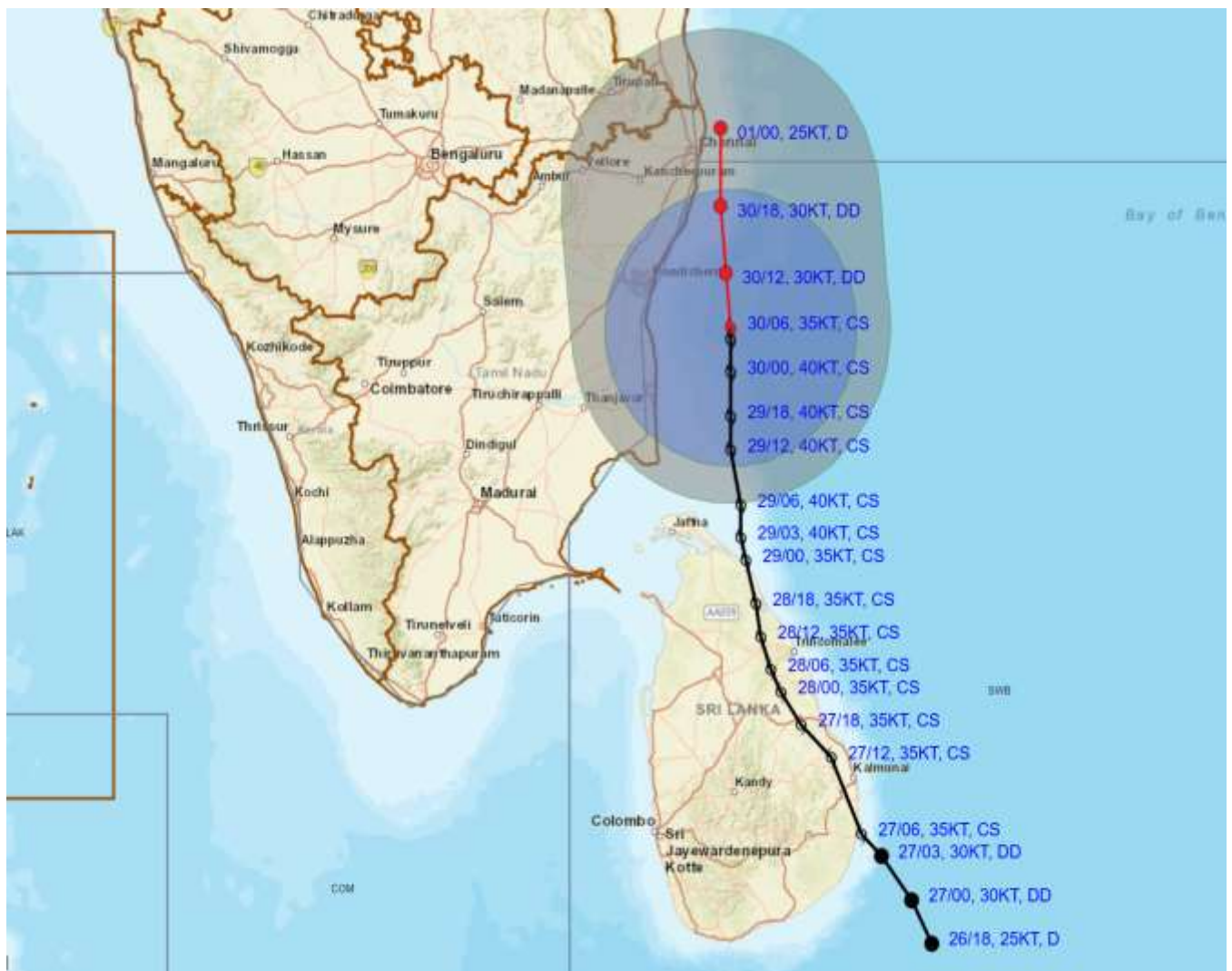
- LESS THAN 34 KT
- 34-47 KT
- \geq 48 KT
- OBSERVED TRACK
- FORECAST TRACK
- CONE OF UNCERTAINTY

Forecast distance (km) and direction of the centre from nearest 5 coastal stations

Forecast Date and Time	Station 1	Station 2	Station 3	Station 4	Station 5
30.11.25/0600	PARANGIPETTAI (91,E)	CUDDALORE (96,ESE)	MO PONDICHERRY (100,ESE)	KARAIKAL (106,NE)	NAGAPPATTINAM (116,NE)
30.11.25/1200	MO PONDICHERRY (80,E)	CUDDALORE (89,ENE)	PARANGIPETTAI (102,ENE)	CHENNAI/MINAMBAKKAM (118,SSE)	NUMGAMBAKKAM (125,SSE)
30.11.25/1800	CHENNAI/MINAMBAKKAM (56,SE)	NUMGAMBAKKAM (61,SSE)	MO PONDICHERRY (102,NE)	TIRUTTANI (121,ESE)	CUDDALORE (122,NE)
01.12.25/0000	NUMGAMBAKKAM (42,NE)	CHENNAI/MINAMBAKKAM (48,NE)	TIRUTTANI (106,E)	TIRUPATHI (107,ESE)	NELLORE (140,SSE)



OBSERVED AND FORECAST TRACK ALONGWITH QUADRANT WIND DISTRIBUTION OF CYCLONIC STORM “DITWAH” OVER SOUTHWEST BAY OF BENGAL AND ADJOINING NORTH TAMILNADU-PUDUCHERRY COASTS BASED ON 0600 UTC (1130 Hrs. IST) OF 30TH NOVEMBER 2025

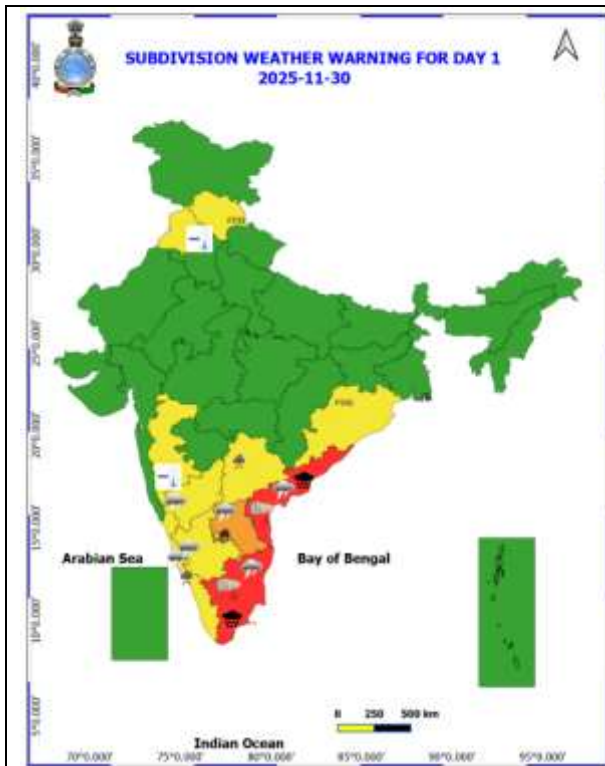


DATE/TIME IN UTC
 IST=UTC + 0530
 L: LOW PRESSURE AREA
 WML: WELL MARKED LOW PRESSURE AREA
 D: DEPRESSION (17-27 KT)
 DD: DEEP DEPRESSION (28-33 KT)
 CS: CYCLONIC STORM (34-47 KT)
 SCS: SEVERE CYCLONIC STORM (48-63KT)
 VSCS: VERY SEVERE CYCLONIC STORM (64-89 KT)
 ESCS: EXTREMELY SEVERE CYCLONIC STORM (90-119 KT)
 SuCS: SUPER CYCLONIC STORM (\geq 120 KT)

● LESS THAN 34 KT
 ○ 34-47 KT
 ⊙ \geq 48 KT
 — OBSERVED TRACK
 — FORECAST TRACK
 ▲ CONE OF UNCERTAINTY
 AREA OF MAXIMUM SUSTAINED WIND SPEED:
 ■ 28-33 KT (52-61 KMPH)
 ■ 34-49 KT (62-91 KMPH)
 ■ 50-63 KT (92-117 KMPH)
 ■ \geq 64 KT (\geq 118 KMPH)

IMPACT OVER THE SEA

MSW (knot/kmph)	Impact	Action
28-33 (52-61)	Very rough seas	Total suspension of fishing operations
34-49 (62-91)	High to very high seas	Total suspension of fishing operations
50-63 (92-117)	Very high seas	Total suspension of fishing operations
\geq 64 (\geq 118)	Phenomenal	Total suspension of fishing operations



Heavy Rain

Very Heavy Rain

Extremely Heavy Rain

COLOUR CODED WARNING

No Warning (No Action)

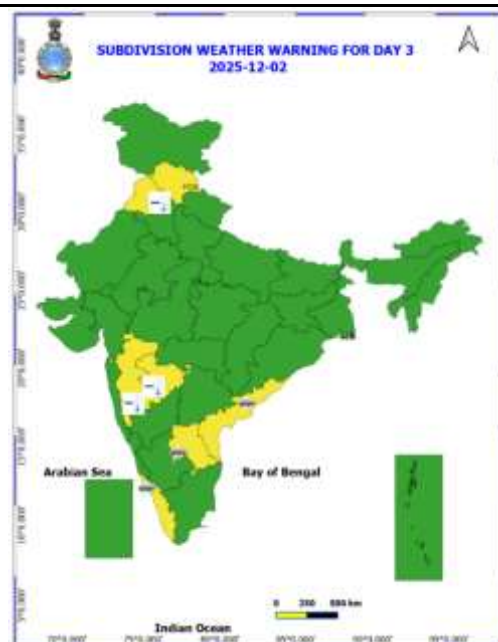
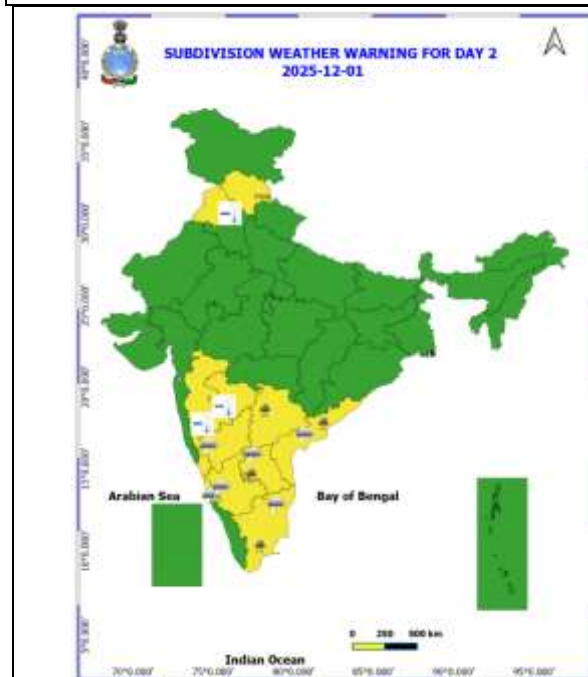
Watch (Be Aware)

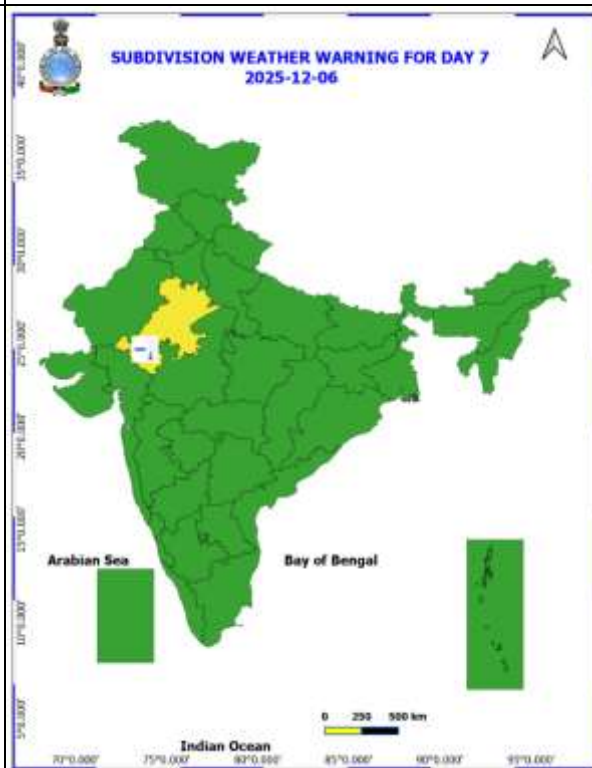
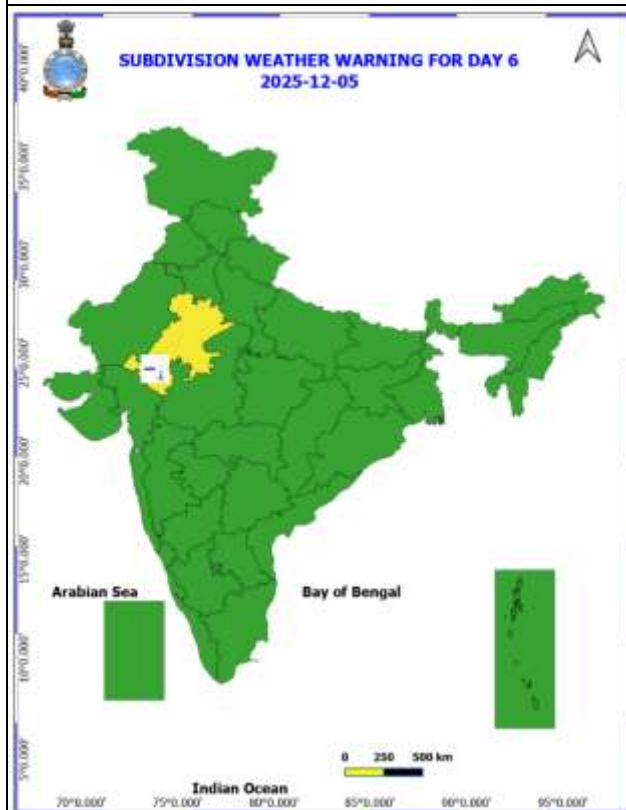
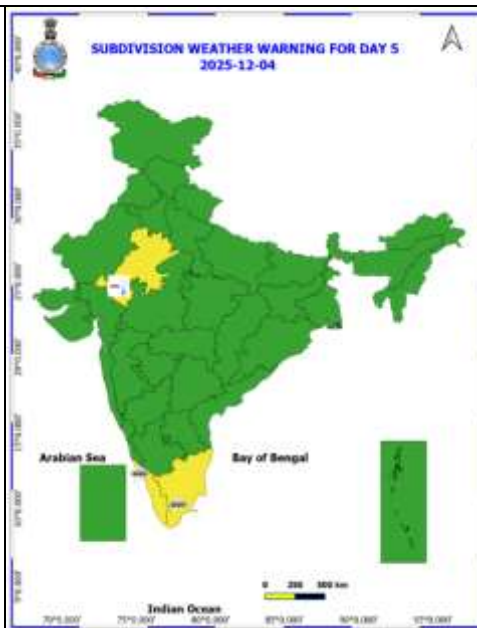
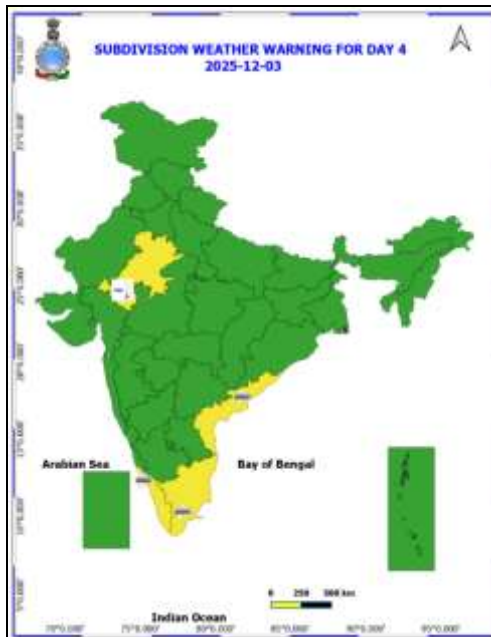
Alert (Be Prepared To Take Action)

Warning (Take Action)

Probabilistic Forecast

Terms	Probability of Occurrence (%)
Unlikely	< 25
Likely	25 - 50
Very Likely	50 - 75
Most Likely	> 75



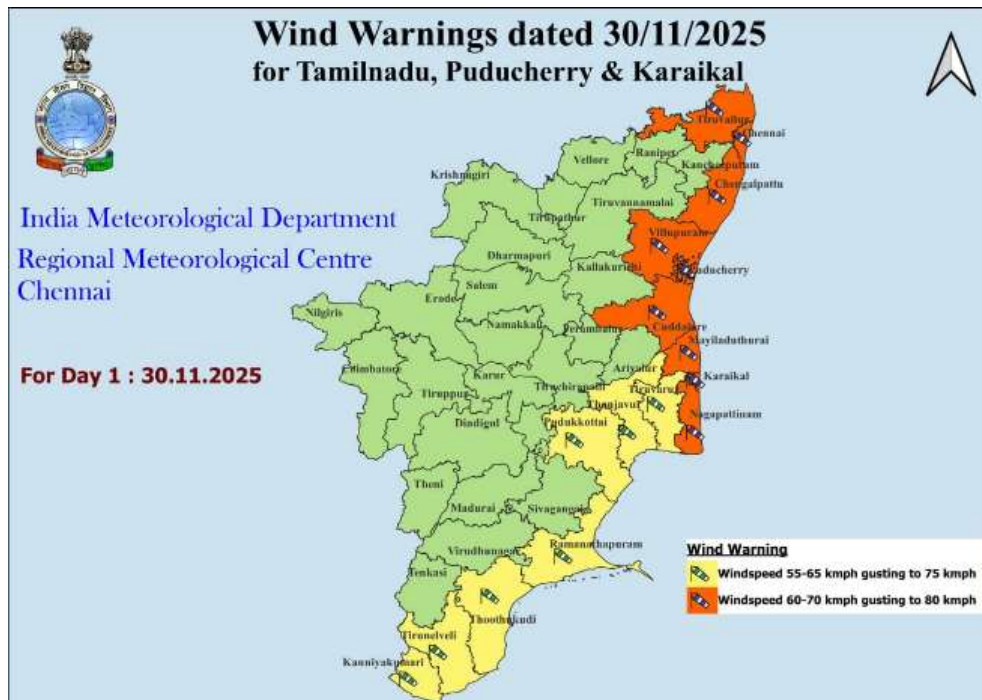


- Action may be taken based on **ORANGE AND RED** COLOUR warnings.
- Vulnerable regions likely urban and hilly areas action may be initiated for heavy rainfall warning.
- As the lead period increases forecast accuracy decreases.

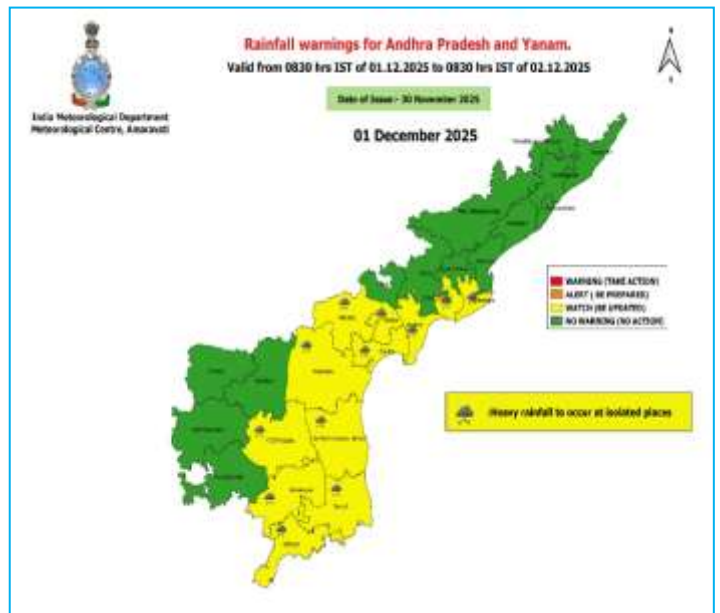
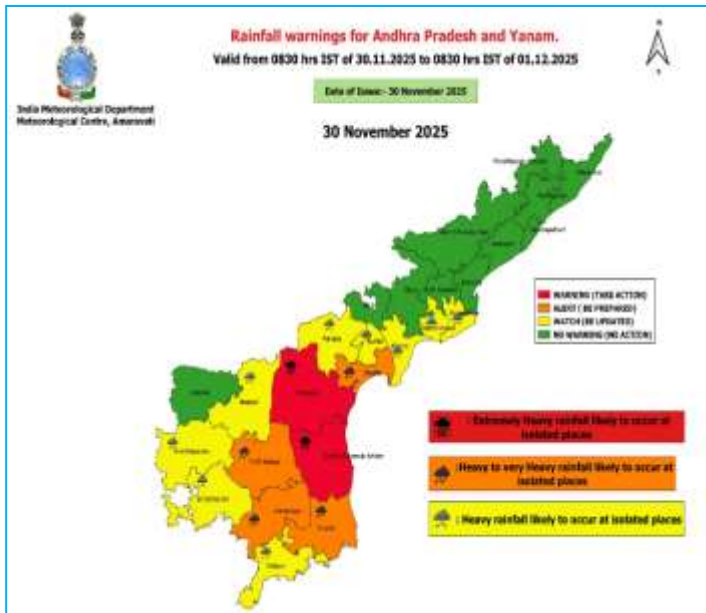
District-wise Heavy Rainfall for Tamil Nadu & Puducherry



Wind Warning Graphics



District-wise Warning Graphics for Andhra Pradesh & Yanam



Wind Warning

Wind warnings for Andhra Pradesh and Yanam.

India Meteorological Department
Meteorological Centre, Amaravati

30th November

India Meteorological Department
Meteorological Centre, Amaravati

India Meteorological Department
Meteorological Centre, Amaravati

Flash Flood Guidance

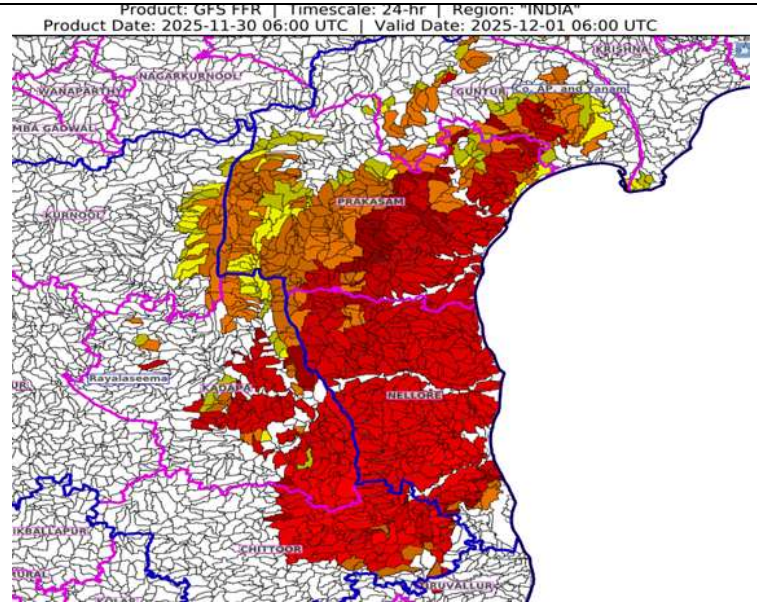
24 hours Outlook for the Flash Flood Risk (FFR) till 1130 IST of 01-12-2025:

Moderate flash flood risk likely over few watersheds & neighbourhoods of following Met Sub-divisions during next 24 hours.

Coastal Andhra Pradesh & Yanam - Guntur, Prakasam and Nellore districts.

Rayalaseema - Chittoor, Kurnool and Kadapa districts.

Surface runoff/ Inundation may occur at some fully saturated soils & low-lying areas over Area of Concern (AoC) as shown in map due to expected rainfall occurrence in next 24 hours.



Flash Flood Risk

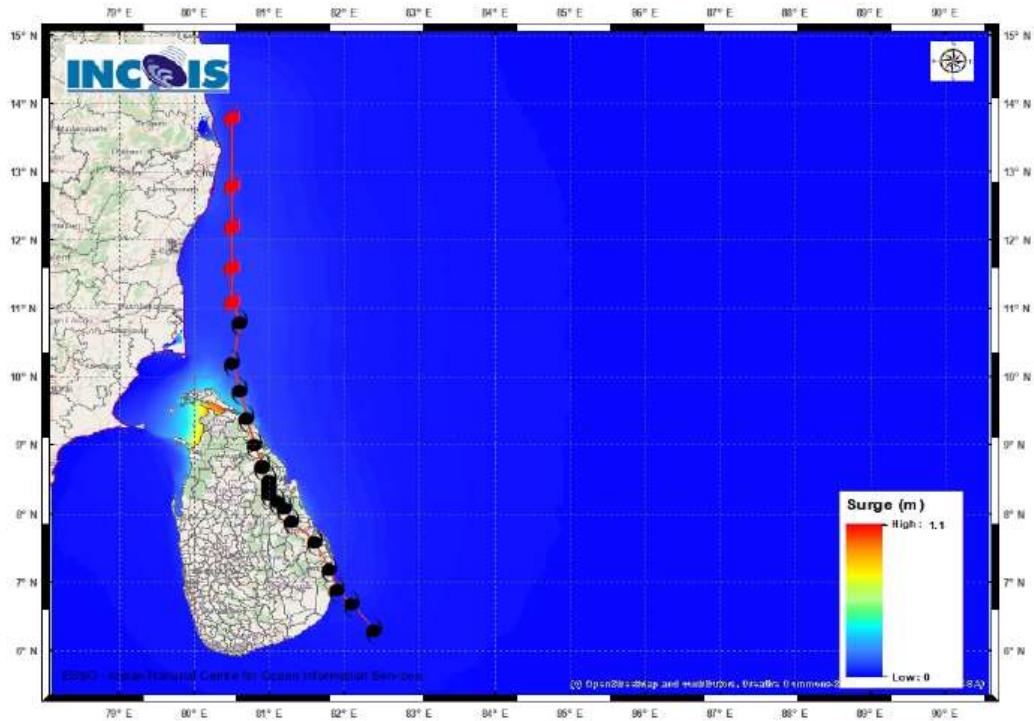
High Risk (Take Action)

Moderate Risk (Be Prepared)

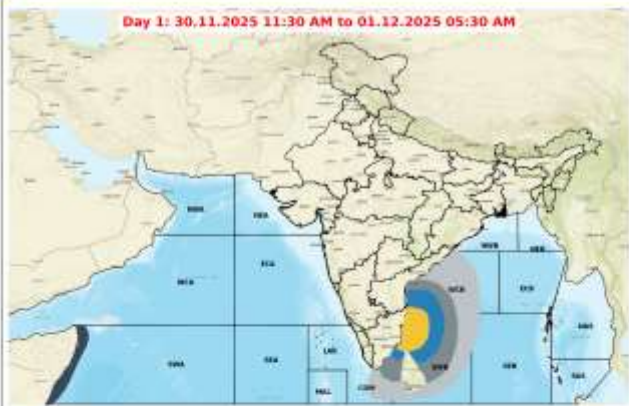
Low Risk (Be Updated)

Storm Surge Guidance

MANDAL/TALUK	DISTRICT	STATE / UNION TERRITORY	NEAREST PLACE OF HABITATION	STORM SURGE (m) *	EXPECTED INUNDATION EXTENT (km)
Chengalpattu	Kancheepuram	Tamil Nadu	Muthukadu	0.3-0.5	Nil
Ponneri	Thiruvallur	Tamil Nadu	Karimanal	0.2-0.4	Upto 0.15



Fishermen Warning Graphics



Legend

- | | |
|---|---|
| Squally Weather with wind speed 35-45 kmph gusting to 55 kmph | Squally wind with speed 55-65 kmph gusting to 75 kmph |
| Squally Weather with wind speed 40-50 kmph gusting to 60 kmph | CS with Gale winds with speed 60-80 kmph gusting to 90 kmph |
| Squally Weather with wind speed 45-55 kmph gusting to 65 kmph | SCS with Gale wind speed 90-110 kmph gusting to 120 kmph |
| Squally wind with speed 45-55 kmph gusting to 65 kmph | VSCS with Gale wind speed 120-165 kmph gusting to 185 kmph |
| Squally wind with speed 50-60 kmph gusting to 70 kmph | ESCS with Gale wind speed 165-220 kmph gusting to 245 kmph |

Fishermen are advised not to venture into the marked areas.