



Government of India  
Ministry of Earth Sciences



India Meteorological Department

## PRESS RELEASE – 4

Time of issue: 1430 hours IST

Dated: 15 June, 2023

### Sub: Very Severe Cyclonic Storm “Biparjoy” (pronounced as “Biporjoy”) over Northeast Arabian Sea: Cyclone Warning for Saurashtra & Kutch Coasts (Red Message)

Yesterday's very severe cyclonic storm “Biparjoy” pronounced as "BIPORJOY" over northeast Arabian Sea recurved gradually northeastwards and lay centered at 1130 hours IST of today, the 15th June, 2023 over the same region near latitude 22.8°N and longitude 67.3°E, about 140 km west-southwest of Jakhau Port (Gujarat), 190 km west-northwest of Devbhumi Dwarka, 170 km west-southwest of Naliya, 280 km west-northwest of Porbandar, and 230 km south of Karachi (Pakistan).

It is very likely to move northeastwards and cross Saurashtra & Kutch and adjoining Pakistan coasts between Mandvi (Gujarat) and Karachi (Pakistan) near Jakhau Port (Gujarat) by tonight, the 15<sup>th</sup> June as a very severe cyclonic storm with maximum sustained wind speed of 115-125 kmph gusting to 140 kmph. Landfall process will commence from evening of today, the 15<sup>th</sup> June and continue till midnight.

The system is being tracked by Doppler Weather Radar at Bhuj, Gujarat.

Forecast track and intensity are given below:

Date/Time(IST)	Position (Lat. °N/ long. °E)	Maximum sustained surface wind speed (Kmph)	Category of cyclonic disturbance
15.06.23/1130	22.8/67.3	120-130 Gusting To 145	Very Severe Cyclonic Storm
15.06.23/1730	23.2/67.8	115-125 Gusting To 140	Very Severe Cyclonic Storm
15.06.23/2330	23.7/68.7	105-115 Gusting To 125	Severe Cyclonic Storm
16.06.23/0530	24.2/69.4	75-85 Gusting To 95	Cyclonic Storm
16.06.23/1130	24.7/70.2	50-60 Gusting To 70	Deep Depression
16.06.23/2330	25.6/71.5	35-45 Gusting To 55	Well Marked Low Pressure Area

### Warnings:

#### (i) Heavy Rainfall warning:

- Light to moderate rainfall at most places with heavy to very heavy rainfall at a few places and extremely heavy falls at isolated places very likely over Kachchh, Devbhumi Dwarka & Jamnagar and heavy to very heavy rainfall at a few places over Porbandar, Rajkot, Morbi & Junagarh districts of Gujarat and Isolated heavy to very heavy rainfall is very likely over remaining districts of Saurashtra and north Gujarat region on 15<sup>th</sup> June.

Contact: Cyclone Warning Division, Office of the Director General of Meteorology,  
India Meteorological Department, Ministry of Earth Sciences.

Phone: (91) 11-24652484, FAX: (91) 11-24643128, 24623220, E-mail: cwdhq2008@gmail.com, Website: [rsmcnewdelhi.imd.gov.in](http://rsmcnewdelhi.imd.gov.in)

Spatial rainfall distribution: Isolated: <25%, A few: 26-50%, Many: 51-75%, Most: 76-100%

Rainfall amount (mm): Heavy rain: 64.5 – 115.5, Very heavy rain: 115.6 – 204.4, Extremely heavy rain: 204.5 or more.

- Light to moderate rainfall at most places with heavy to extremely heavy rainfall at isolated places very likely over north Gujarat and adjoining south Rajasthan on 16<sup>th</sup> and southeast Rajasthan & adjoining North Gujarat region on 17<sup>th</sup> June.

## **(ii) Wind warning:**

**Northeast Arabian Sea:** Gale wind speed reaching 120-130 kmph gusting to 150 kmph prevailing over the region likely to gradually decrease and becoming 115-125 kmph gusting 140 kmph by 15<sup>th</sup> evening. It would weaken gradually further more thereafter becoming squally wind speed reaching 50-60 kmph gusting to 70 kmph by 16<sup>th</sup> morning.

**Eastcentral Arabian Sea:** Gale wind speed reaching 50-60 kmph gusting to 70 kmph is prevailing and would become squally wind speed reaching 40-50 kmph gusting to 60 kmph from 15<sup>th</sup> evening for subsequent 12 hours.

**Wind warning along & off Saurashtra & Kutch coasts (Kachchh, Devbhumi Dwarka, Porbandar, Jamnagar, Rajkot, Junagarh and Morbi districts) including Gulf of Kutch:**

- Gale wind speed reaching 70-80 kmph gusting to 90 kmph are prevailing along & off Porbandar & Devbhoomi Dwarka district coasts. It would gradually increase becoming gale wind speed reaching 115-125 kmph gusting to 135 kmph during 15<sup>th</sup> afternoon to night along & off Kachchh, Devbhumi Dwarka, Porbandar, Jamnagar, Rajkot, Junagarh and Morbi districts. Thereafter, it would decrease gradually becoming 70-80 kmph gusting to 90 kmph over Kachchh and adjoining districts of Saurashtra & Kutch by 16<sup>th</sup> early morning and squally wind speed reaching 45-55 kmph gusting to 65 kmph by 16<sup>th</sup> afternoon.
- Squally wind speed reaching 50-60 kmph gusting to 70 kmph very likely to prevail along & off remaining districts of Saurashtra coast on 15<sup>th</sup> June.

## **Wind Warning for South Rajasthan**

- Squally wind speed reaching 40-50 kmph gusting to 60 kmph is likely over South Rajasthan during 16<sup>th</sup> noon to evening and 35-45 kmph gusting to 55 kmph till mid-night of 17<sup>th</sup> June morning.

## **(iii) Sea condition**

Sea condition will be phenomenal over northeast Arabian Sea and rough to very rough over adjoining eastcentral Arabian Sea till 15<sup>th</sup> evening and would improve thereafter.

### **Along & off Saurashtra& Kutch coasts:**

Sea condition is likely to be very high to phenomenal thereafter till 15<sup>th</sup> June night and would improve thereafter.

## **(iv) Storm Surge Warning (Kachchh, Devbhumi Dwarka, Porbandar, Jamnagar and Morbi districts)**

Storm surge of about 2 -3 m above the astronomical tide is likely to inundate the low lying areas of above districts during the time of landfall. The astronomical tides along these districts could be upto 3-6 meters in different places.

**(v) Damage expected over Kachchh, Devbhumi Dwarka, Porbandar, Jamnagar, Morbi & Junagarh & Rajkot districts of Gujarat on 15<sup>th</sup> June:**

- Total destruction of thatched houses/ extensive damage to kutcha houses. Some damage to Pucca houses.
- Potential threat from flying objects.
- Bending/ uprooting of power and communication poles.
- Major damage to Kutcha and Pucca roads. Flooding of escape routes. Disruption of railways, overhead power lines and signalling systems.
- Widespread damage to standing crops, plantations, orchards, falling of green coconuts and tearing of palm fronds. Blowing down of bushy trees like mango.
- Small boats, country crafts may get detached from moorings.
- Visibility severely affected due to salt spray.

**(vi) Fishermen Warning & Action Suggested (Kachchh, Devbhumi Dwarka, Porbandar, Jamnagar, Rajkot, Junagarh and Morbi districts) and for Offshore & Onshore Industries (Graphics Attached):**

- Total suspension of fishing operations over northeast and adjoining eastcentral Arabian Sea till 15<sup>th</sup> June.
- Those out at sea are advised to return to coast.
- Judicious regulation of offshore and onshore activities.
- Ports along the west coast of India may take necessary precautions.
- Naval base operations may maintain necessary precautions.
- Movement in motor boats and small ships all & off these coasts to be avoided.
- Mobilize evacuation from coastal areas of Saurashtra and Kutch (Kachchh, Devbhumi Dwarka, Porbandar, Jamnagar, Rajkot, Junagarh and Morbi districts).
- Judicious regulation of rail and road traffic.
- People in affected areas to remain indoors.
- Tourism activities may be restricted over these areas.
- Preparatory actions before the cyclones.

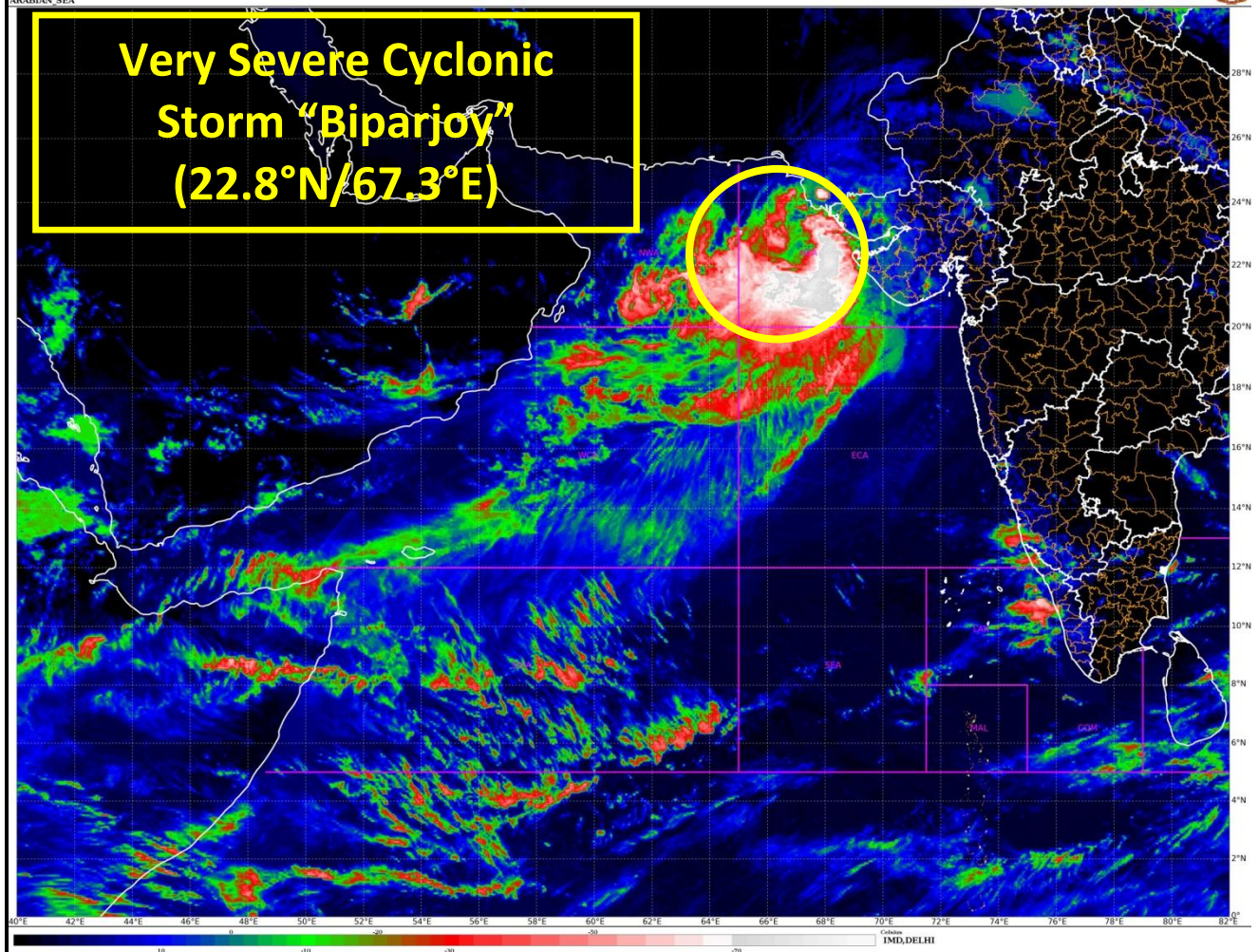
**The system is under continuous surveillance and the next message will be issued at 1430 hours IST of the 16<sup>th</sup> June, 2023.**

**For regular updates kindly visit [www.rsmcnewdelhi.imd.gov.in](http://www.rsmcnewdelhi.imd.gov.in) and [www.mausam.imd.gov.in](http://www.mausam.imd.gov.in)**



SAT : INSAT-3D IMG  
IMG, TIR1, TEMP 10.8 um  
ARABIAN SEA

15-06-2023/(0600 to 0627) GMT  
15-06-2023/(1130 to 1157) IST



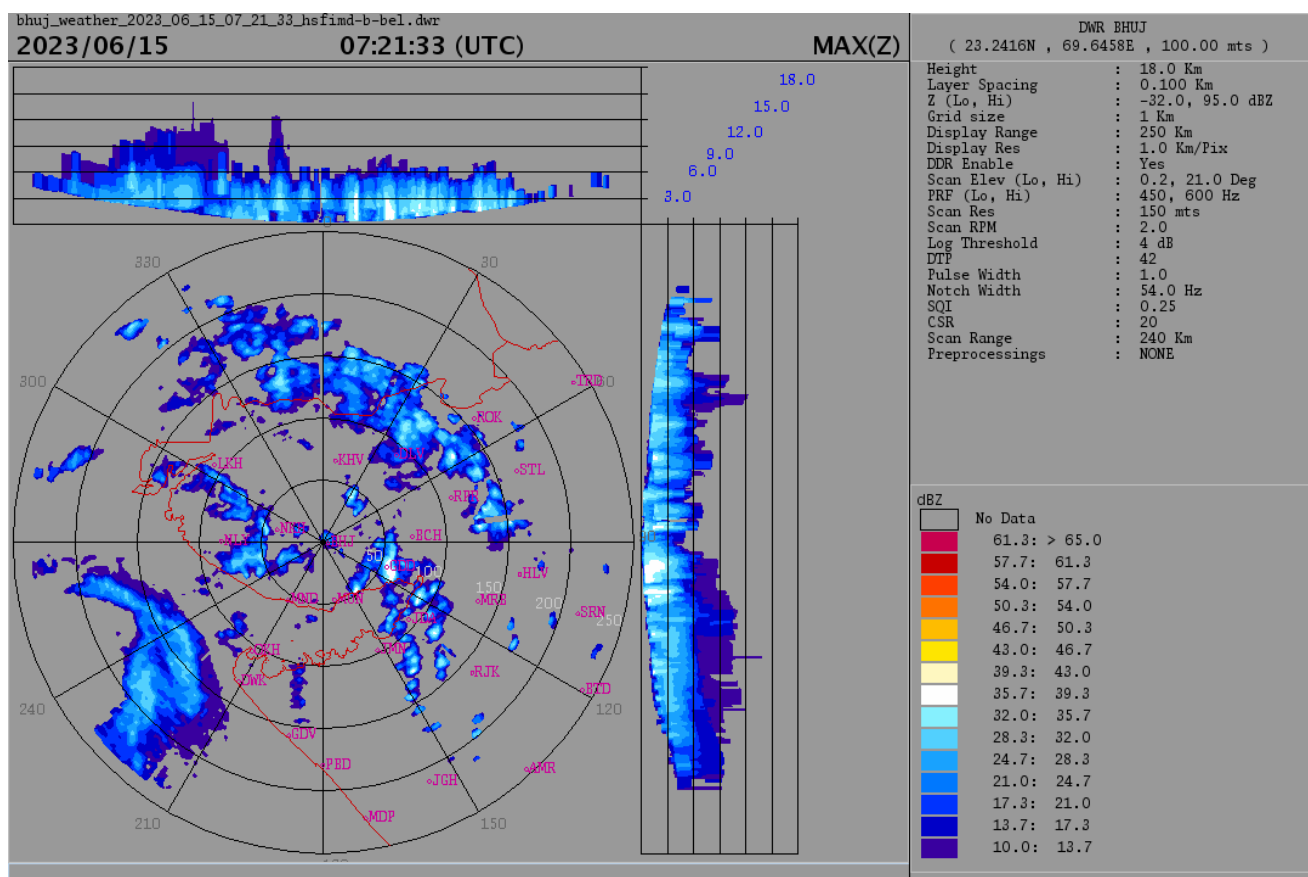
Contact: Cyclone Warning Division, Office of the Director General of Meteorology,  
India Meteorological Department, Ministry of Earth Sciences.

Phone: (91) 11-24652484, FAX: (91) 11-24643128, 24623220, E-mail: [cwdhq2008@gmail.com](mailto:cwdhq2008@gmail.com), Website: [rsmcnewdelhi.imd.gov.in](http://rsmcnewdelhi.imd.gov.in)

Spatial rainfall distribution: Isolated: <25%, A few: 26-50%, Many: 51-75%, Most: 76-100%

Rainfall amount (mm): Heavy rain: 64.5 – 115.5, Very heavy rain: 115.6 – 204.4, Extremely heavy rain: 204.5 or more.

## Radar Imagery of Doppler Weather Radar at Bhuj



Contact: Cyclone Warning Division, Office of the Director General of Meteorology,  
 India Meteorological Department, Ministry of Earth Sciences.

Phone: (91) 11-24652484, FAX: (91) 11-24643128, 24623220, E-mail: [cwdhq2008@gmail.com](mailto:cwdhq2008@gmail.com), Website: [rsmcnewdelhi.imd.gov.in](http://rsmcnewdelhi.imd.gov.in)

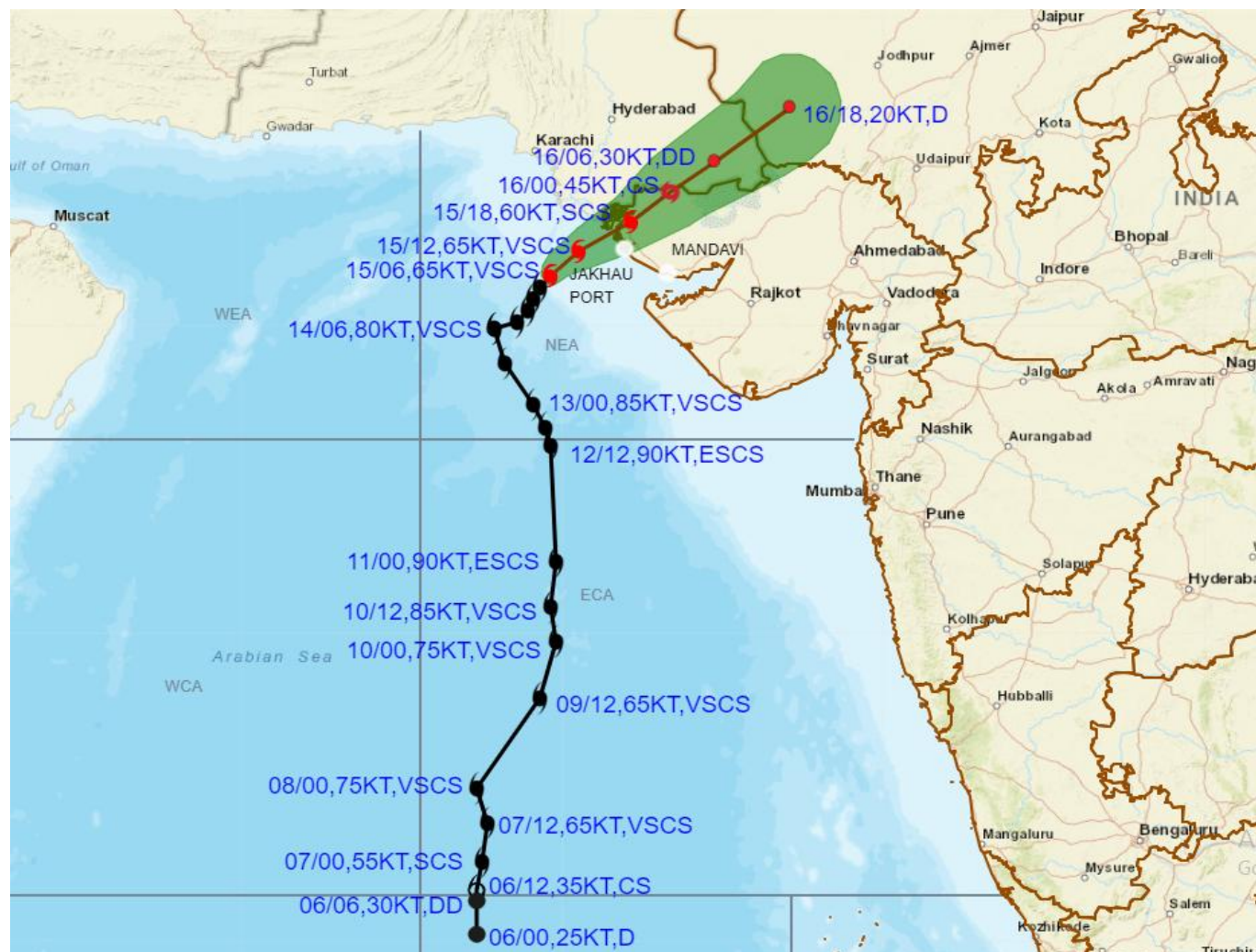
Spatial rainfall distribution: Isolated: <25%, A few: 26-50%, Many: 51-75%, Most: 76-100%

Rainfall amount (mm): Heavy rain: 64.5 – 115.5, Very heavy rain: 115.6 – 204.4, Extremely heavy rain: 204.5 or more.





**OBSERVED AND FORECAST TRACK ALONGWITH CONE OF UNCERTAINTY OF VERY SEVERE CYCLONIC STORM "BIPARJOY" OVER NORTHEAST ARABIAN SEA BASED ON 0600 UTC (1130 IST) OF 15<sup>TH</sup> JUNE 2023.**



DATE/TIME IN UTC

IST=UTC + 0530

L: LOW PRESSURE AREA

WML: WELL MARKED LOW PRESSURE AREA

D: DEPRESSION (17-27 KT)

DD: DEEP DEPRESSION (28-33 KT)

CS: CYCLONIC STORM (34-47 KT)

SCS: SEVERE CYCLONIC STORM (48-63KT)

VSCS: VERY SEVERE CYCLONIC STORM (64-89 KT)

ESCS: EXTREMELY SEVERE CYCLONIC STORM (90-119 KT)

SuCS: SUPER CYCLONIC STORM (≥ 120 KT)

● LESS THAN 34 KT

○ 34-47 KT

○ ≥ 48 KT

— OBSERVED TRACK

— FORECAST TRACK

▲ CONE OF UNCERTAINTY

Forecast	DISTANCE(KM) AND DIRECTION FROM STATIONS				
Date and Time	NALIYA	JAKHAU PORT	DWARKA	KARACHI AIRPORT	PORBANDAR
16.06.23/0600	210, NE	230, NE	280, NNE	310, E	340, N

Contact: Cyclone Warning Division, Office of the Director General of Meteorology,

India Meteorological Department, Ministry of Earth Sciences.

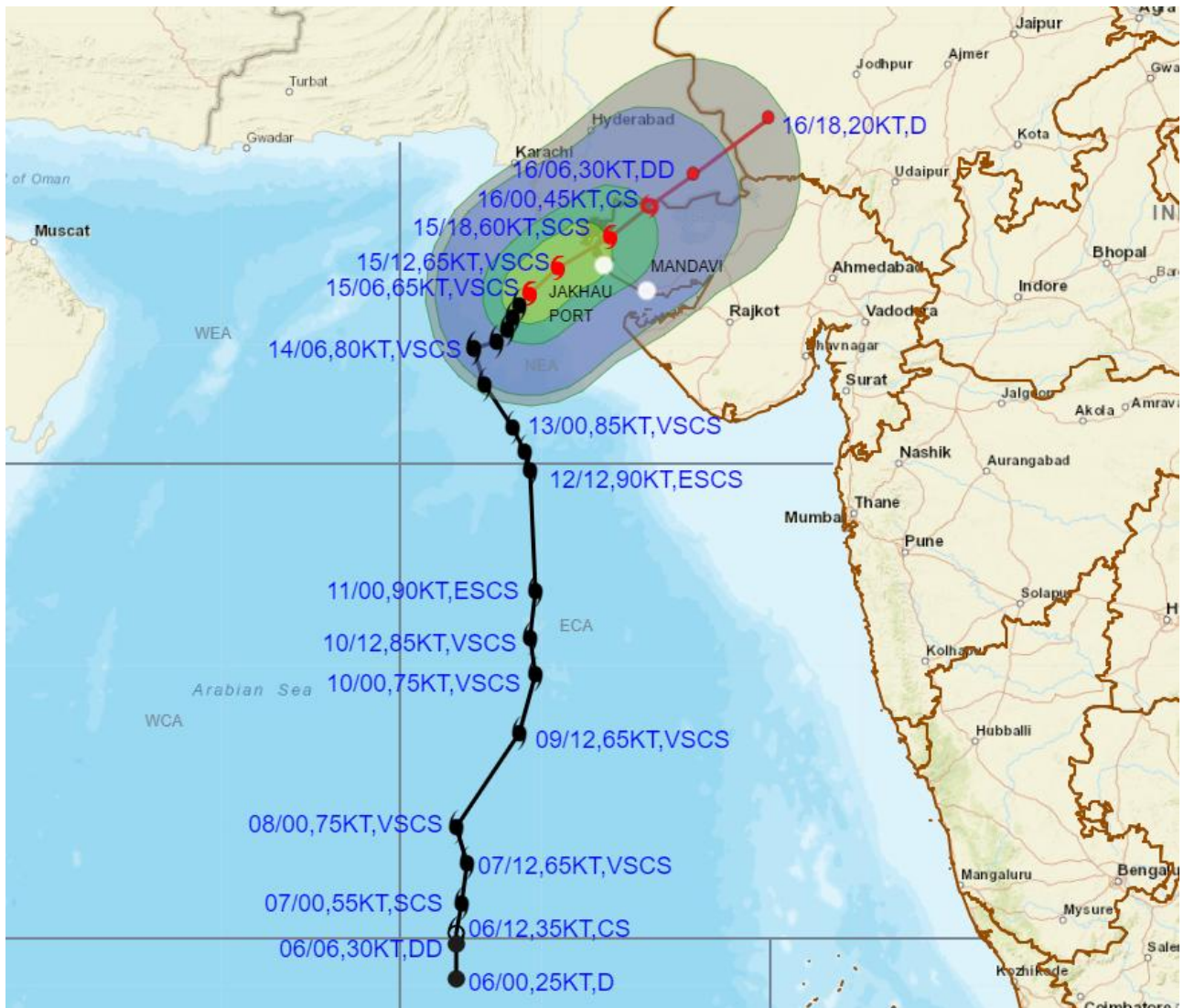
Phone: (91) 11-24652484, FAX: (91) 11-24643128, 24623220, E-mail: cwdhq2008@gmail.com, Website: [rsmcnewdelhi.imd.gov.in](http://rsmcnewdelhi.imd.gov.in)

Spatial rainfall distribution: Isolated: <25%, A few: 26-50%, Many: 51-75%, Most: 76-100%

Rainfall amount (mm): Heavy rain: 64.5 – 115.5, Very heavy rain: 115.6 – 204.4, Extremely heavy rain: 204.5 or more.



**OBSERVED AND FORECAST TRACK ALONGWITH QUADRANT WIND DISTRIBUTION OF VERY SEVERE CYCLONIC STORM "BIPARJOY" OVER NORTHEAST ARABIAN SEA BASED ON 0600 UTC (1130 IST) OF 15<sup>TH</sup> JUNE 2023.**



DATE/TIME IN UTC

IST=UTC + 0530

L: LOW PRESSURE AREA

WML: WELL MARKED LOW PRESSURE AREA

D: DEPRESSION (17.27 KT)

DD: DEEP DEPRESSION (28.33 KT)

CS: CYCLONIC STORM (34.47 KT)

SCS: SEVERE CYCLONIC STORM (48.63KT)

VSCS: VERY SEVERE CYCLONIC STORM (64.89 KT)

ESCS: EXTREMELY SEVERE CYCLONIC STORM (90.119 KT)

SuCS: SUPER CYCLONIC STORM (≥ 120 KT)

● LESS THAN 34 KT

○ 34-47 KT

● ≥ 48 KT

— OBSERVED TRACK

— FORECAST TRACK

— CONE OF UNCERTAINTY

AREA OF MAXIMUM SUSTAINED WIND SPEED:

— 28-33 KT (52-61 KMPH)

— 34-49 KT (62-91 KMPH)

— 50-63 KT (92-117 KMPH)

— ≥ 64 KT (≥118 KMPH)

**IMPACT OVER THE SEA**

MSW (knot/kmph)	Impact	Action
28-33 (52-61)	Very rough seas	Total suspension of fishing operations
34-49 (62-91)	High to very high seas	Total suspension of fishing operations
50-63 (92-117)	Very high seas	Total suspension of fishing operations
≥ 64 (≥118)	Phenomenal	Total suspension of fishing operations

Contact: Cyclone Warning Division, Office of the Director General of Meteorology,

India Meteorological Department, Ministry of Earth Sciences.

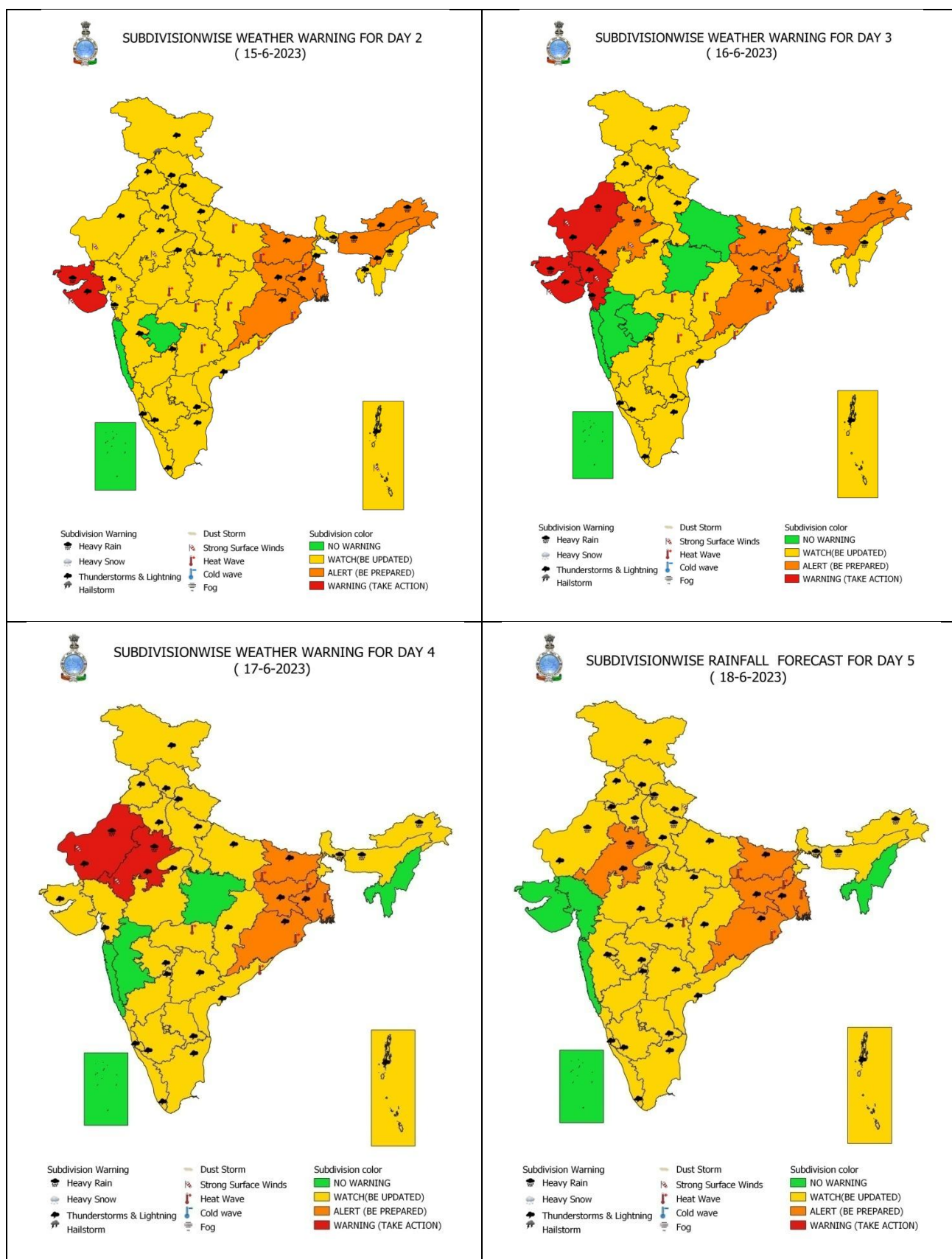
Phone: (91) 11-24652484, FAX: (91) 11-24643128, 24623220, E-mail: cwdhq2008@gmail.com, Website: [rsmcnewdelhi.imd.gov.in](http://rsmcnewdelhi.imd.gov.in)

Spatial rainfall distribution: Isolated: <25%, A few: 26-50%, Many: 51-75%, Most: 76-100%

Rainfall amount (mm): Heavy rain: 64.5 – 115.5, Very heavy rain: 115.6 – 204.4, Extremely heavy rain: 204.5 or more.



## All India Heavy Rainfall Warning for 15<sup>th</sup> to 18<sup>th</sup> June 2023



**Contact: Cyclone Warning Division, Office of the Director General of Meteorology,**

**India Meteorological Department, Ministry of Earth Sciences.**

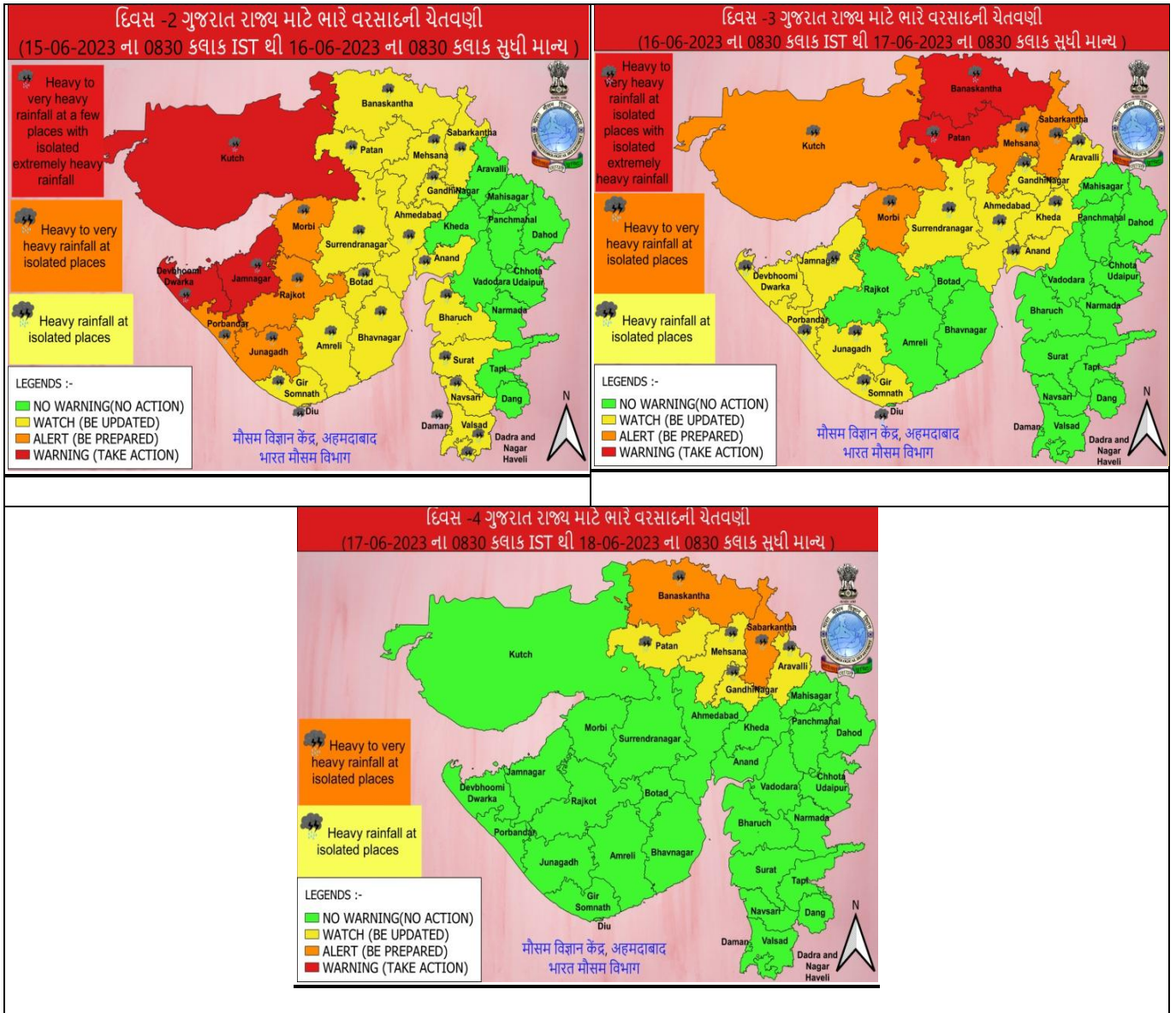
**Phone: (91) 11-24652484, FAX: (91) 11-24643128, 24623220, E-mail: cwdhq2008@gmail.com, Website: [rsmcnewdelhi.imd.gov.in](http://rsmcnewdelhi.imd.gov.in)**

**Spatial rainfall distribution: Isolated: <25%, A few: 26-50%, Many: 51-75%, Most: 76-100%**

**Rainfall amount (mm): Heavy rain: 64.5 – 115.5, Very heavy rain: 115.6 – 204.4, Extremely heavy rain: 204.5 or more.**



## District-wise Heavy Rainfall Warning Maps for 15<sup>th</sup> to 17<sup>th</sup> June



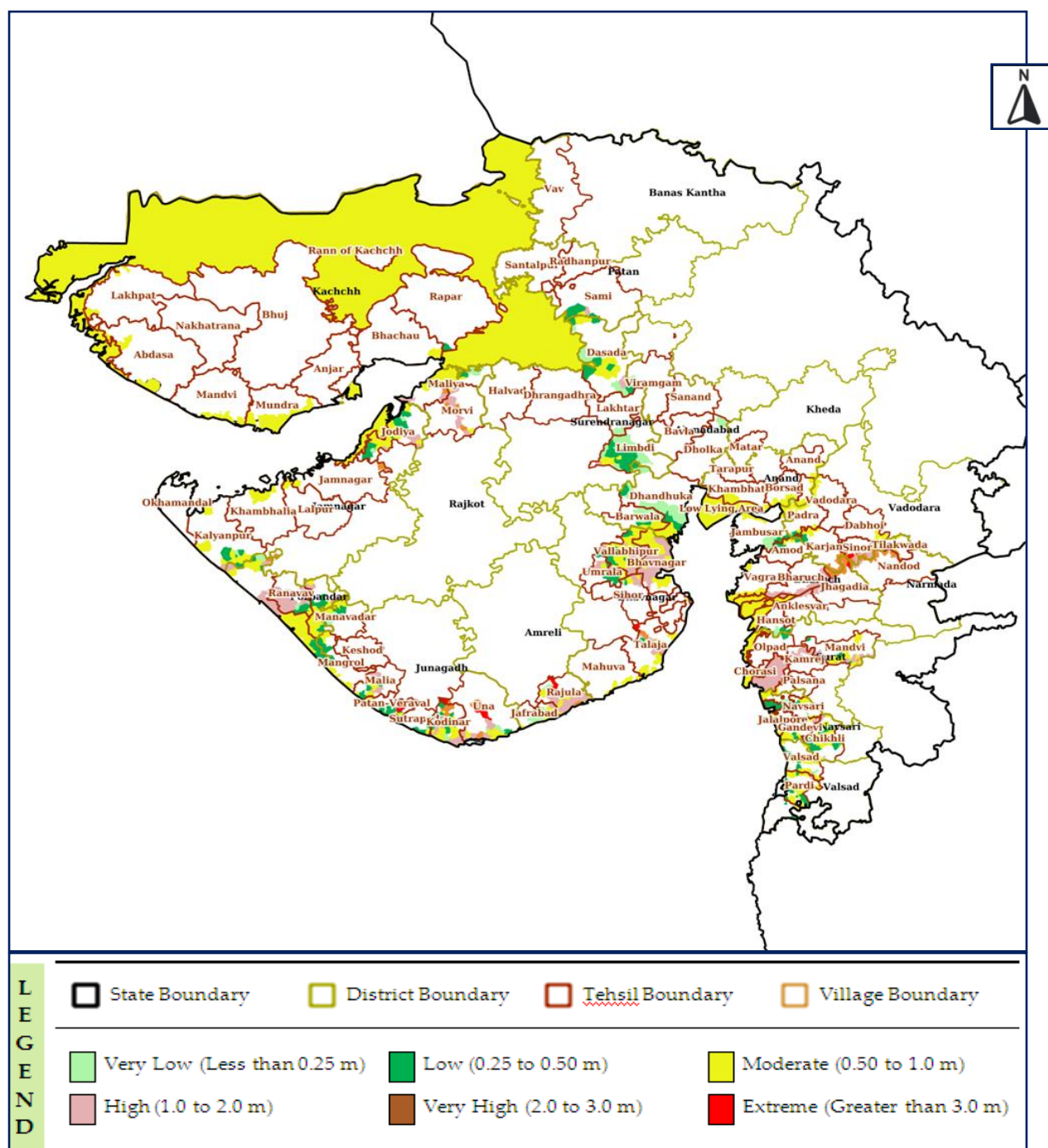
Contact: Cyclone Warning Division, Office of the Director General of Meteorology,  
India Meteorological Department, Ministry of Earth Sciences.

Phone: (91) 11-24652484, FAX: (91) 11-24643128, 24623220, E-mail: [cwdhq2008@gmail.com](mailto:cwdhq2008@gmail.com), Website: [rsmcnewdelhi.imd.gov.in](http://rsmcnewdelhi.imd.gov.in)

Spatial rainfall distribution: Isolated: <25%, A few: 26-50%, Many: 51-75%, Most: 76-100%

Rainfall amount (mm): Heavy rain: 64.5 – 115.5, Very heavy rain: 115.6 – 204.4, Extremely heavy rain: 204.5 or more.

## Cyclone Biparjoy Flood Hazard Map (Tehsil-wise) on 15<sup>th</sup> June – Flood Depth



**For State Government Agencies:** The list of affected villages with corresponding estimated wind speed, flood level and surge height can be seen in the Web-DCRA & DSS Application (<https://webdcra.ncrmp.gov.in/>). The concerned States/UTs can generate and download the list of affected villages through the distinct Tab named 'Affected Villages' under MOST AFFECTED DISTRICTS panel at right bottom provided in Real Time Cyclone Impact Forecasting dashboard of the Web-DCRA & DSS Application.

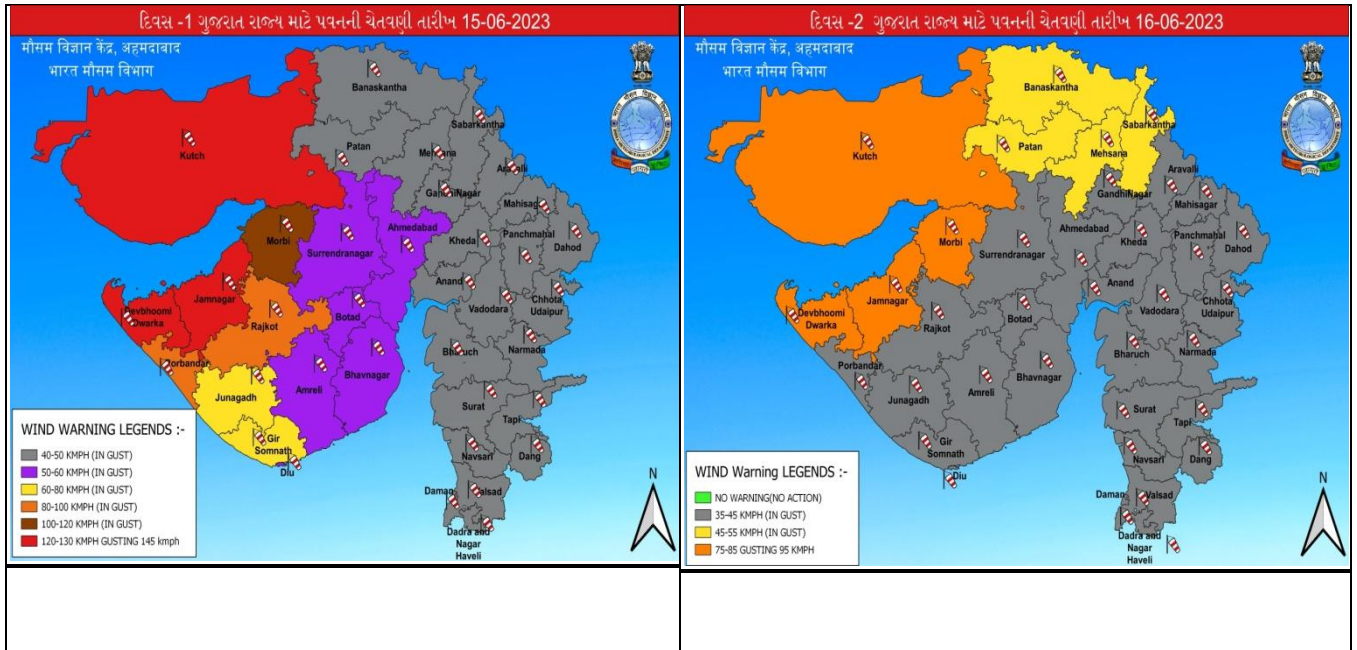
Contact: Cyclone Warning Division, Office of the Director General of Meteorology,  
India Meteorological Department, Ministry of Earth Sciences.

Phone: (91) 11-24652484, FAX: (91) 11-24643128, 24623220, E-mail: [cwdhq2008@gmail.com](mailto:cwdhq2008@gmail.com), Website: [rsmcnewdelhi.imd.gov.in](http://rsmcnewdelhi.imd.gov.in)

Spatial rainfall distribution: Isolated: <25%, A few: 26-50%, Many: 51-75%, Most: 76-100%

Rainfall amount (mm): Heavy rain: 64.5 – 115.5, Very heavy rain: 115.6 – 204.4, Extremely heavy rain: 204.5 or more.

## District-wise Wind Warning Maps for 15<sup>th</sup> to 16<sup>th</sup> June



Contact: Cyclone Warning Division, Office of the Director General of Meteorology,  
India Meteorological Department, Ministry of Earth Sciences.

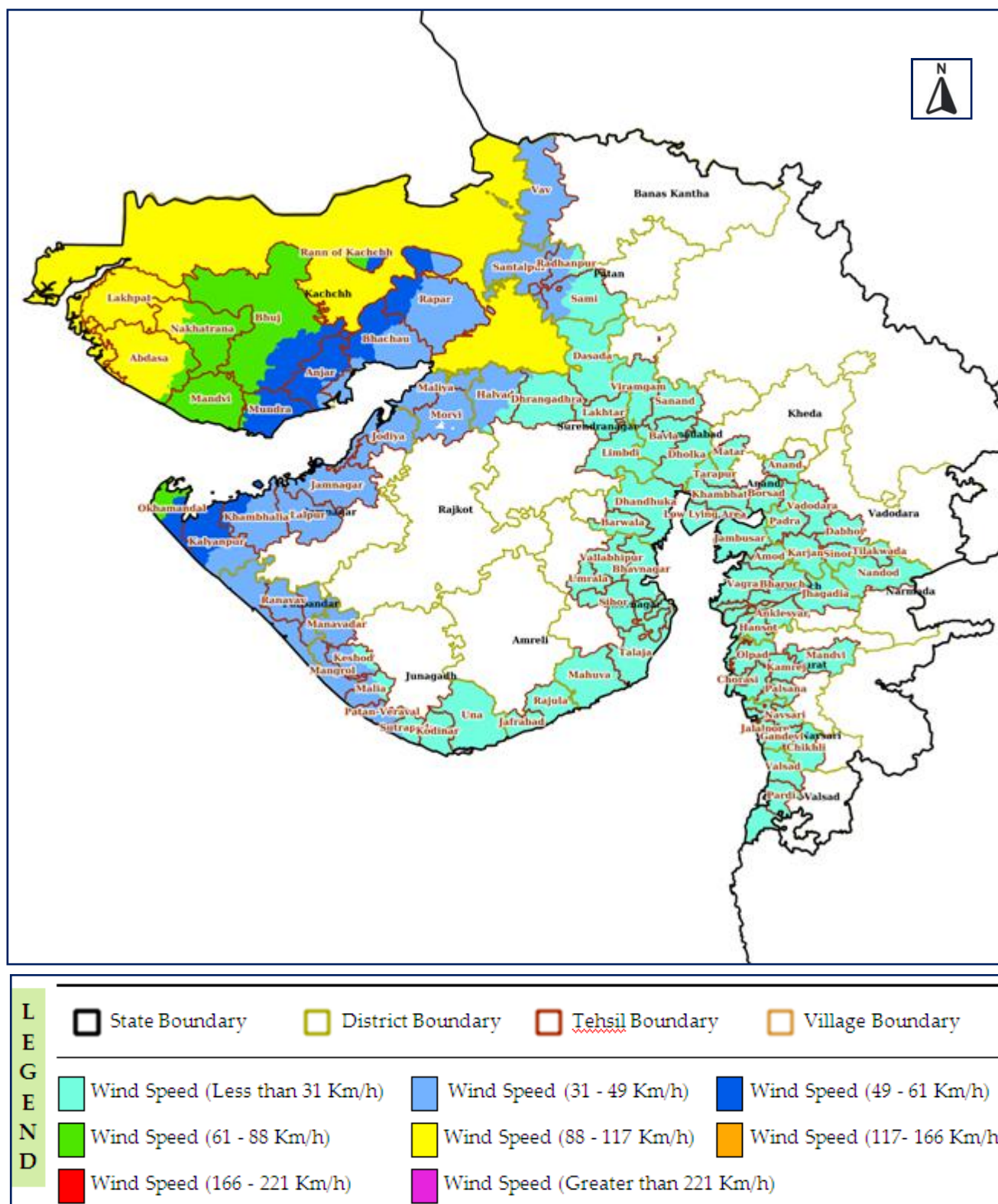
Phone: (91) 11-24652484, FAX: (91) 11-24643128, 24623220, E-mail: [cwdhq2008@gmail.com](mailto:cwdhq2008@gmail.com), Website: [rsmcnewdelhi.imd.gov.in](http://rsmcnewdelhi.imd.gov.in)

Spatial rainfall distribution: Isolated: <25%, A few: 26-50%, Many: 51-75%, Most: 76-100%

Rainfall amount (mm): Heavy rain: 64.5 – 115.5, Very heavy rain: 115.6 – 204.4, Extremely heavy rain: 204.5 or more.



## Cyclone Biparjoy Wind Hazard Map (Tehsil-wise) on 15<sup>th</sup> June - Wind Speeds



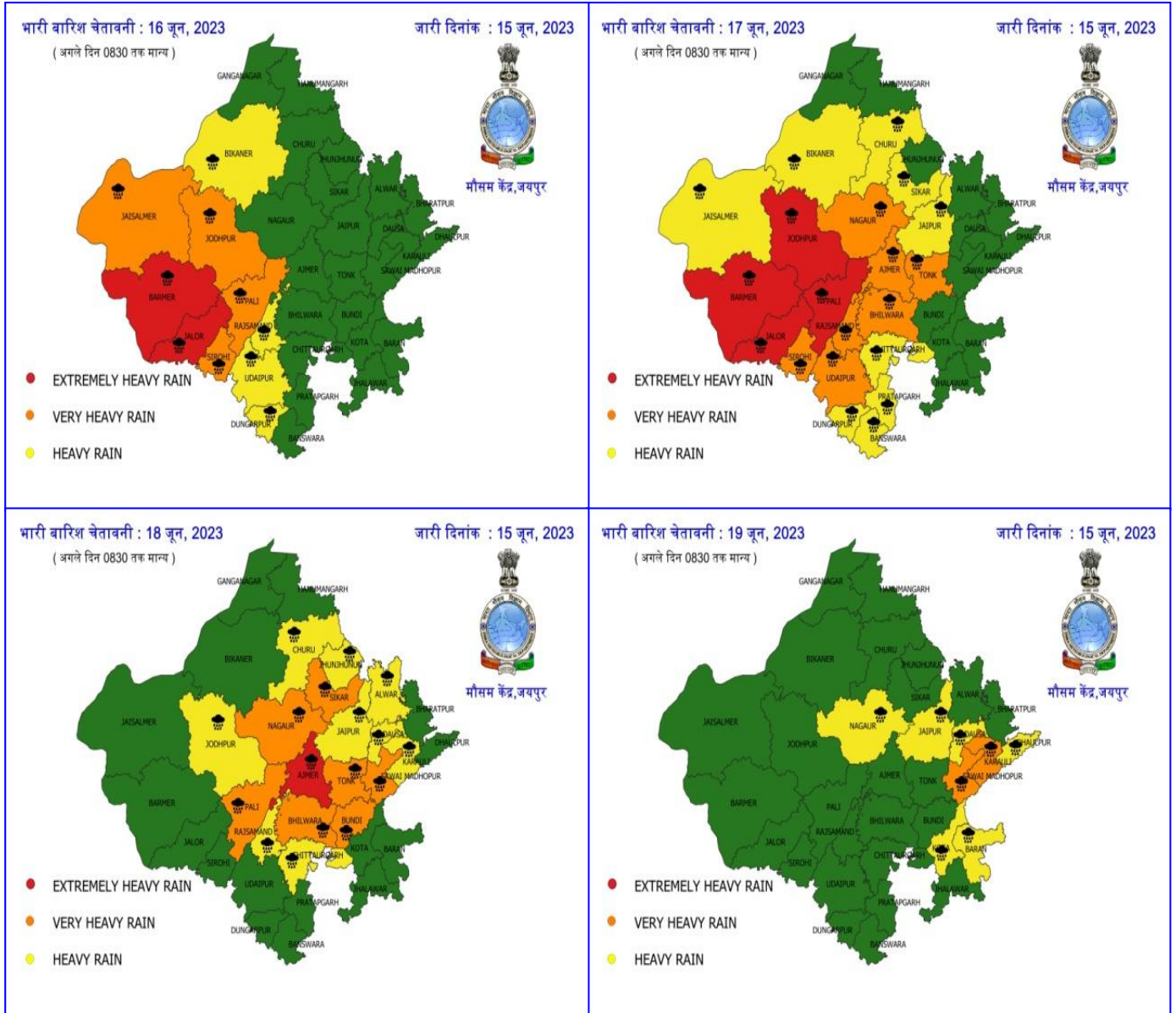
Contact: Cyclone Warning Division, Office of the Director General of Meteorology,  
India Meteorological Department, Ministry of Earth Sciences.

Phone: (91) 11-24652484, FAX: (91) 11-24643128, 24623220, E-mail: [cwdhq2008@gmail.com](mailto:cwdhq2008@gmail.com), Website: [rsmcnewdelhi.imd.gov.in](http://rsmcnewdelhi.imd.gov.in)

Spatial rainfall distribution: Isolated: <25%, A few: 26-50%, Many: 51-75%, Most: 76-100%

Rainfall amount (mm): Heavy rain: 64.5 – 115.5, Very heavy rain: 115.6 – 204.4, Extremely heavy rain: 204.5 or more.

## District-wise Heavy Rainfall Warning Maps for 16<sup>th</sup>, 17<sup>th</sup>, 18<sup>th</sup> and 19<sup>th</sup> June for Rajasthan



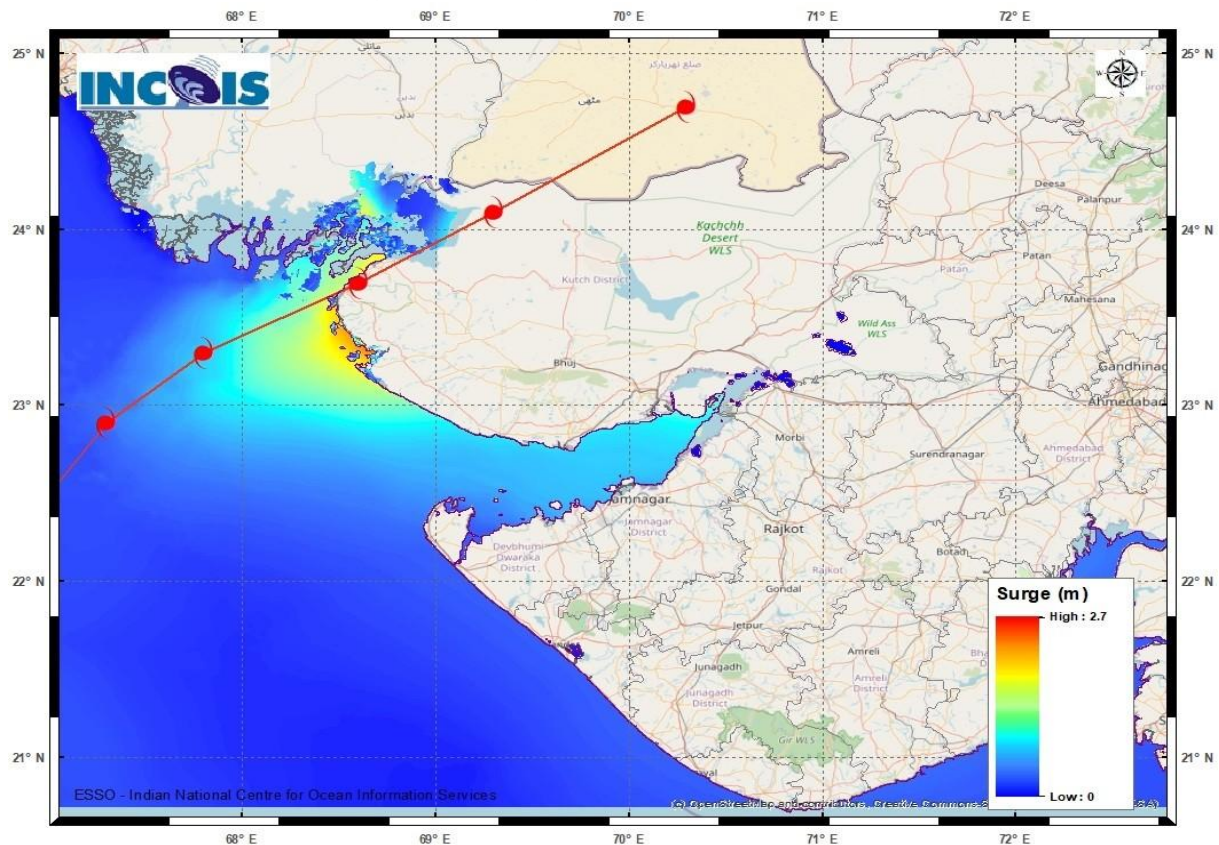
Contact: Cyclone Warning Division, Office of the Director General of Meteorology,  
India Meteorological Department, Ministry of Earth Sciences.

Phone: (91) 11-24652484, FAX: (91) 11-24643128, 24623220, E-mail: [cwdhq2008@gmail.com](mailto:cwdhq2008@gmail.com), Website: [rsmcnewdelhi.imd.gov.in](http://rsmcnewdelhi.imd.gov.in)

Spatial rainfall distribution: Isolated: <25%, A few: 26-50%, Many: 51-75%, Most: 76-100%

Rainfall amount (mm): Heavy rain: 64.5 – 115.5, Very heavy rain: 115.6 – 204.4, Extremely heavy rain: 204.5 or more.

## Storm Surge Warning Map based on Forecast Track



### Astronomical Tide on 15<sup>th</sup> June 2023

Station	Time (IST)	Height (m)
Porbandar	09:37	2.61
Navlakhi	13:38	7.54
OKHA	11:36	3.74
DEENDAYAL PORT (KANDLA)	13:02	6.79

Contact: Cyclone Warning Division, Office of the Director General of Meteorology,  
India Meteorological Department, Ministry of Earth Sciences.

Phone: (91) 11-24652484, FAX: (91) 11-24643128, 24623220, E-mail: [cwdhq2008@gmail.com](mailto:cwdhq2008@gmail.com), Website: [rsmcnewdelhi.imd.gov.in](http://rsmcnewdelhi.imd.gov.in)

Spatial rainfall distribution: Isolated: <25%, A few: 26-50%, Many: 51-75%, Most: 76-100%

Rainfall amount (mm): Heavy rain: 64.5 – 115.5, Very heavy rain: 115.6 – 204.4, Extremely heavy rain: 204.5 or more.