



Government of India  
Ministry of Earth Sciences



India Meteorological Department

## PRESS RELEASE-4

Time of issue: 1400 hours IST

Dated: 18<sup>th</sup> November, 2023

**Sub: Cyclonic Storm “Midhili” (pronounced as “Midhili”) weakened into a low pressure area over North Tripura and neighbourhood**

Yesterday’s **Cyclonic Storm “Midhili” (pronounced as “Midhili”)** over Northwest and adjoining northeast Bay of Bengal moved north-northeastwards and crossed Bangladesh coast near Khepupara during 1430-1530 hrs IST of 17<sup>th</sup> November and moved across the Islands of Bangladesh as a cyclonic storm with maximum sustained wind speed of 65-75 kmph gusting to 85 kmph and lay over coastal Bangladesh at 1730 hours IST of 17<sup>th</sup> November. Thereafter, it moved northeastwards and weakened gradually into a deep depression over Tripura and adjoining Bangladesh in the same midnight (2330 hours IST). Further moving northeastwards, it weakened into a depression over Tripura and adjoining Bangladesh & Mizoram in the early morning (0530 hours IST) and into a low pressure area over North Tripura and neighbourhood in the forenoon (0830 hours IST) of today, the 18<sup>th</sup> November.

It is likely to continue to move further northeastwards and become less marked during next 06 hours.

### Rainfall Forecast:

- Light to moderate rainfall at few places is likely over Mizoram, Nagaland, Manipur, east Assam and east Arunachal Pradesh on 18<sup>th</sup> November.

### Warnings: Nil

Realised Weather information is placed in Annexure -1

Observed track of the cyclonic storm “MIDHILI” is placed in Annexure-2.

### Statistics of Bulletins and Advisories issued in association with cyclonic storm “MIDHILI”:

India Meteorological Department maintained continuous watch over the North Indian Ocean and this system was monitored since 2<sup>nd</sup> November. In the extended range outlook issued on 2<sup>nd</sup> November, likely formation of a cyclonic circulation over south Bay of Bengal around 12<sup>th</sup> November was indicated. Subsequently in the extended range outlook issued on 9<sup>th</sup> November, it was indicated that depression would form over south Bay of Bengal around 17<sup>th</sup> November. Pre-genesis track & intensity forecast on formation of low pressure area was issued on 14<sup>th</sup> November. Regular advisories were issued to the disaster management agencies at National and State level. Statistics of bulletins issued is given below:

---

Contact: Cyclone Warning Division, Office of the Director General of Meteorology,  
India Meteorological Department, Ministry of Earth Sciences.

Phone:(91) 11-24652484, FAX: (91) 11-24643128, 24623220, E-mail:cwdhq2008@gmail.com, Website: [rsmcnewdelhi.imd.gov.in](http://rsmcnewdelhi.imd.gov.in)

Spatial rainfall distribution: Isolated: <25%, A few: 26-50%, Many: 51-75%, Most: 76-100%

Rainfall amount (mm): Heavy rain: 64.5 – 115.5, Very heavy rain: 115.6 – 204.4, Extremely heavy rain: 204.5 or more.

- (i) Extended Range Outlook: 2 (2<sup>nd</sup> November and 9<sup>th</sup> November)
- (ii) Special Message: 1 (14<sup>th</sup> November)
- (iii) National Bulletin for National Level Disaster Managers: 18
- (iv) Special Tropical Weather Outlook and Tropical Cyclone Advisories to WMO, WMO/ESCAP Panel countries including Bangladesh and Myanmar: 18
- (v) Bulletins for ships in deep sea under Global Maritime Distress Safety System: 14
- (vi) Bulletins for offshore/onshore industries: 7
- (vii) Bulletins for International Civil Aviation: 8
- (viii) Bulletins to modeling group: 8
- (ix) Warnings for fishermen since 9<sup>th</sup> November every 6 hourly: 36
- (x) Regular updates on facebook, tweeter and SMS

In addition, warnings and advisories were also issued by Area Cyclone warning Centre Kolkata, Cyclone warning Centre Visakhapatnam & Bhubaneswar, Regional Meteorological Centre Guwahati, Meteorological Centres Amravati, Agartala, Mizoram, Manipur, Nagaland & Shillong for their respective areas of responsibility.

This is last update in association with this system. However, regular bulletins in association with its remnant shall continue from National Weather Forecasting Centre, New Delhi and concerned Meteorological Centres of Northeastern States.

For regular updates kindly visit [www.rsmcnewdelhi.imd.gov.in](http://www.rsmcnewdelhi.imd.gov.in) and [www.mausam.imd.gov.in](http://www.mausam.imd.gov.in)

---

Contact: Cyclone Warning Division, Office of the Director General of Meteorology,  
India Meteorological Department, Ministry of Earth Sciences.

Phone:(91) 11-24652484, FAX: (91) 11-24643128, 24623220, E-mail:cwdhq2008@gmail.com, Website: [www.rsmcnewdelhi.imd.gov.in](http://www.rsmcnewdelhi.imd.gov.in)

Spatial rainfall distribution: Isolated: <25%, A few: 26-50%, Many: 51-75%, Most: 76-100%

Rainfall amount (mm): Heavy rain: 64.5 – 115.5, Very heavy rain: 115.6 – 204.4, Extremely heavy rain: 204.5 or more.

**24 hours cumulative realised rainfall ending at 0830 hours IST of 18<sup>th</sup> November:****Assam**

Matijuri-10, Silchar, Dholai & Lakhipur- 9 each, Harinagar & Lakhipur – 8 each and Amraghat, B P Ghat, Gharmura & Karimganj – 7 each.

**Mizoram**

Aizwal - 12, Saitual & Lengpui - 11 each, Mizoram University, Kolasib, Lunglei – 10 each, Kolasib - 9, and Lawngtlai, Saiha, Serchhip, Bungtlang – 7 each

**Tripura**

Ashapara - 15; Bagafa, Amarpur & KVK South 14 each, Bagafa, Kanchanpur & Belonia - 13 each; Gokulpur 12; KVK Dhalai & Agartala - 11 each; Dhalai KVK, Met Agartala, DMO West Agartala, A.D.Nagar, Lembucherra, Sonamura & Lambucherra - 10 each; Sipahijala, Nagicherra, Agartala, Dharmanagar & Budhjonagar - 9 each, CTI, Khowai & Udaipur - 8 each and Bishalgarh, Kamalpur & Jirania - 7 each.

**Maximum reported winds (kmph) over Northeastern States:**

As predicted maximum sustained wind speed reaching 30-40 kmph gusting to 50 kmph prevailed over Mizoram, Tripura and adjoining South Assam. Wind speed recorded over different stations are presented below:

State	Station Name	Time (UTC)	Direction	Reported Maximum sustained wind speed (kmph)	Reported Wind in Gustiness (kmph)
Assam	Hailakandi	1515	Northeasterly	15	25
Mizoram	Mizoram University	1730	South - Southeasterly	15	35
	Champai	1145	North – northeasterly	30	45
	Kolasib	1500	East - northeasterly	35	60
Tripura	Gokulpur	1145	East – northeasterly	20	50
	Sabroom	1145	Southeasterly	25	55
	Kailashahar	1430	North – northeasterly	35	55
	Agartala	1130 UTC	Northeasterly	40	65

Contact: Cyclone Warning Division, Office of the Director General of Meteorology,  
India Meteorological Department, Ministry of Earth Sciences.

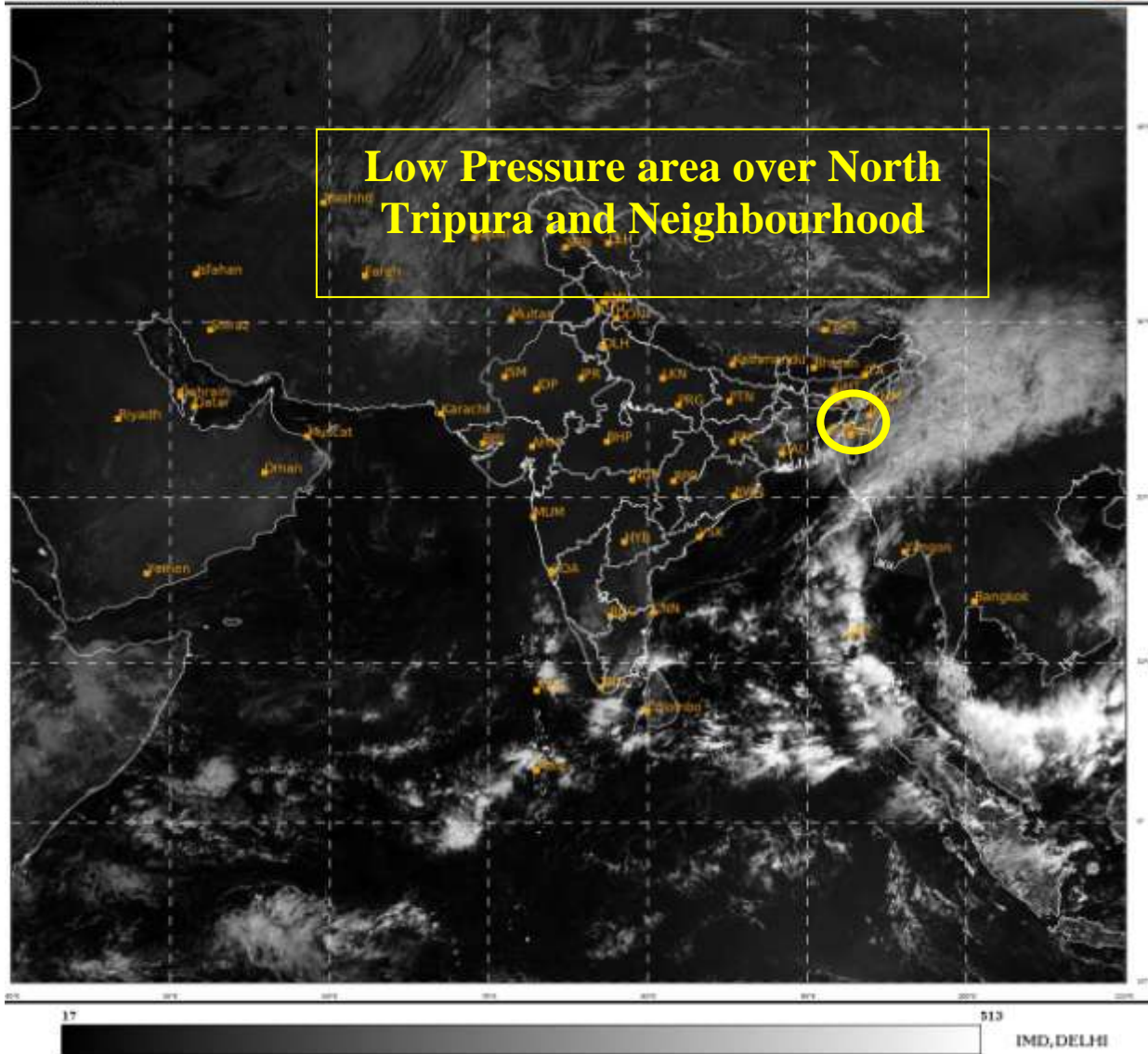
Phone:(91) 11-24652484, FAX: (91) 11-24643128, 24623220, E-mail:cwdhq2008@gmail.com, Website: [rsmcnewdelhi.imd.gov.in](http://rsmcnewdelhi.imd.gov.in)

Spatial rainfall distribution: Isolated: <25%, A few: 26-50%, Many: 51-75%, Most: 76-100%

Rainfall amount (mm): Heavy rain: 64.5 – 115.5, Very heavy rain: 115.6 – 204.4, Extremely heavy rain: 204.5 or more.

SAT : INSAT-3D IMG  
Visible Count 0.65 um  
LIC Mercator

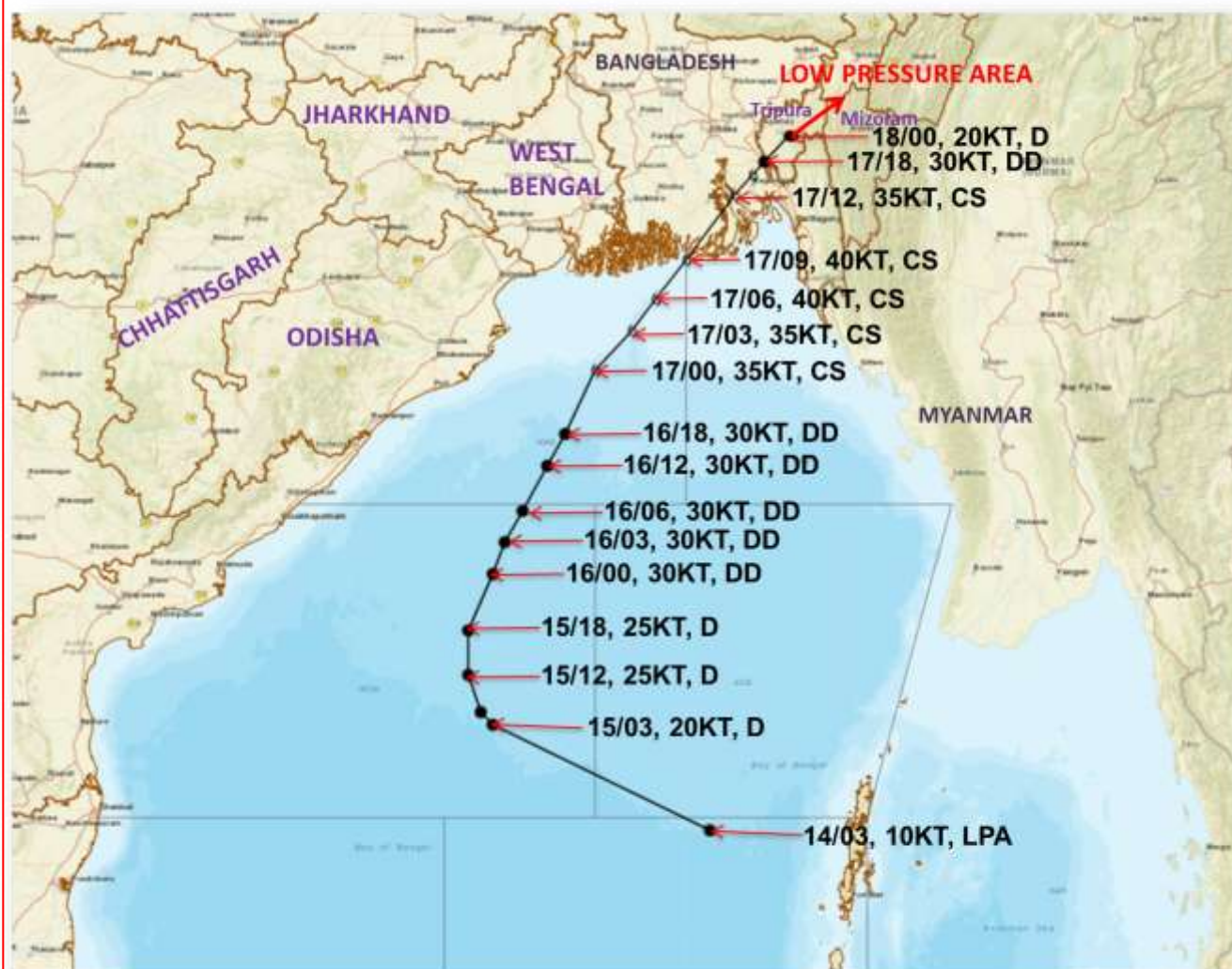
18-11-2023/(0430 to 0457) GMT  
18-11-2023/(1000 to 1027) IST



Contact: Cyclone Warning Division, Office of the Director General of Meteorology,  
India Meteorological Department, Ministry of Earth Sciences.  
Phone:(91) 11-24652484, FAX: (91) 11-24643128, 24623220, E-mail:cwdhq2008@gmail.com, Website: [rsmcnewdelhi.imd.gov.in](http://rsmcnewdelhi.imd.gov.in)  
Spatial rainfall distribution: Isolated: <25%, A few: 26-50%, Many: 51-75%, Most: 76-100%  
Rainfall amount (mm): Heavy rain: 64.5 – 115.5, Very heavy rain: 115.6 – 204.4, Extremely heavy rain: 204.5 or more.



**OBSERVED AND FORECAST TRACK AND INTENSITY IN ASSOCIATION WITH LOW PRESSURE AREA (REMNANT OF CYCLONIC STORM "MIDHILI") OVER NORTH TRIPURA AND NEIGHBOURHOOD BASED ON 0300 UTC (0830 HRS IST) OF 18TH NOVEMBER 2023.**



**DATE/TIME IN UTC**

IST=UTC + 0530

L: LOW PRESSURE AREA

WML: WELL MARKED LOW PRESSURE AREA

D: DEPRESSION (17-27 KT)

DD: DEEP DEPRESSION (28-33 KT)

CS: CYCLONIC STORM (34-47 KT)

SCS: SEVERE CYCLONIC STORM (48-63KT)

VSCS: VERY SEVERE CYCLONIC STORM (64-89 KT)

ESCS: EXTREMELY SEVERE CYCLONIC STORM (90-119 KT)

SuCS: SUPER CYCLONIC STORM (≥ 120 KT)

● LESS THAN 34 KT

⊙ 34-47 KT

⊙ ≥ 48 KT

■ OBSERVED TRACK

■ FORECAST TRACK

▲ CONE OF UNCERTAINTY

Contact: Cyclone Warning Division, Office of the Director General of Meteorology,

India Meteorological Department, Ministry of Earth Sciences.

Phone:(91) 11-24652484, FAX: (91) 11-24643128, 24623220, E-mail:cwdhq2008@gmail.com, Website: [rsmcnewdelhi.ind.gov.in](http://rsmcnewdelhi.ind.gov.in)

Spatial rainfall distribution: Isolated: <25%, A few: 26-50%, Many: 51-75%, Most: 76-100%

Rainfall amount (mm): Heavy rain: 64.5 – 115.5, Very heavy rain: 115.6 – 204.4, Extremely heavy rain: 204.5 or more.