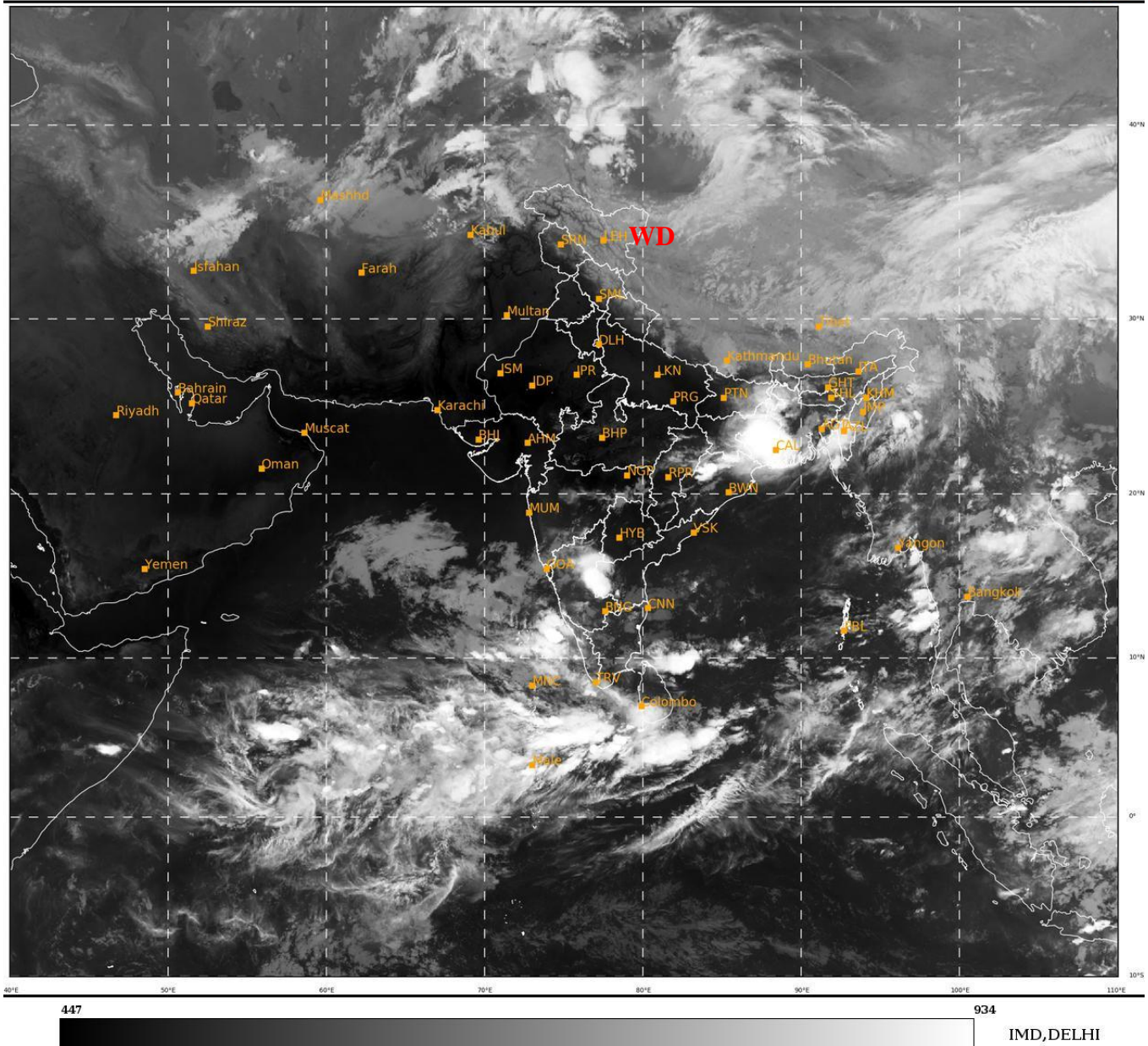




**SATELLITE BULLETIN BASED ON SATELLITE
 IMAGERIES AND PRODUCTS**
13.05.2022 TIME 1800 UTC

SAT : INSAT-3DR IMG
 IMG_TIR1 10.8 um
 LIC Mercator

13-05-2022/(1715 to 1742) GMT
 13-05-2022/(2245 to 2312) IST



TCIN50 DEMS 131800

SATELLITE BULLETIN BASED ON INSAT-3D PIC OF 131700 UTC (.)

REGION COVERED BETWEEN LAT 50.0°N TO 30.0°S AND LONG 40.0°E TO 125.0°E (.)

SALIENT FEATURES:-

WESTERN DISTURBANCE (WD):-

SCT MULTILAYERED CLOUDS OVER LADAKH TIBET ADJ CHINA IN ASSW **WD** OVER THE AREA (.)

THUNDERSTORM / CONVECTIVE ACTIVITY:-

THUNDERSTORM / CONVECTIVE ACTIVITIES OBSERVED OVER E JHRKND E BHR GWB TRP N ORS KRNTK TRP MIZO LKSDP ILS (.)

DUST:-

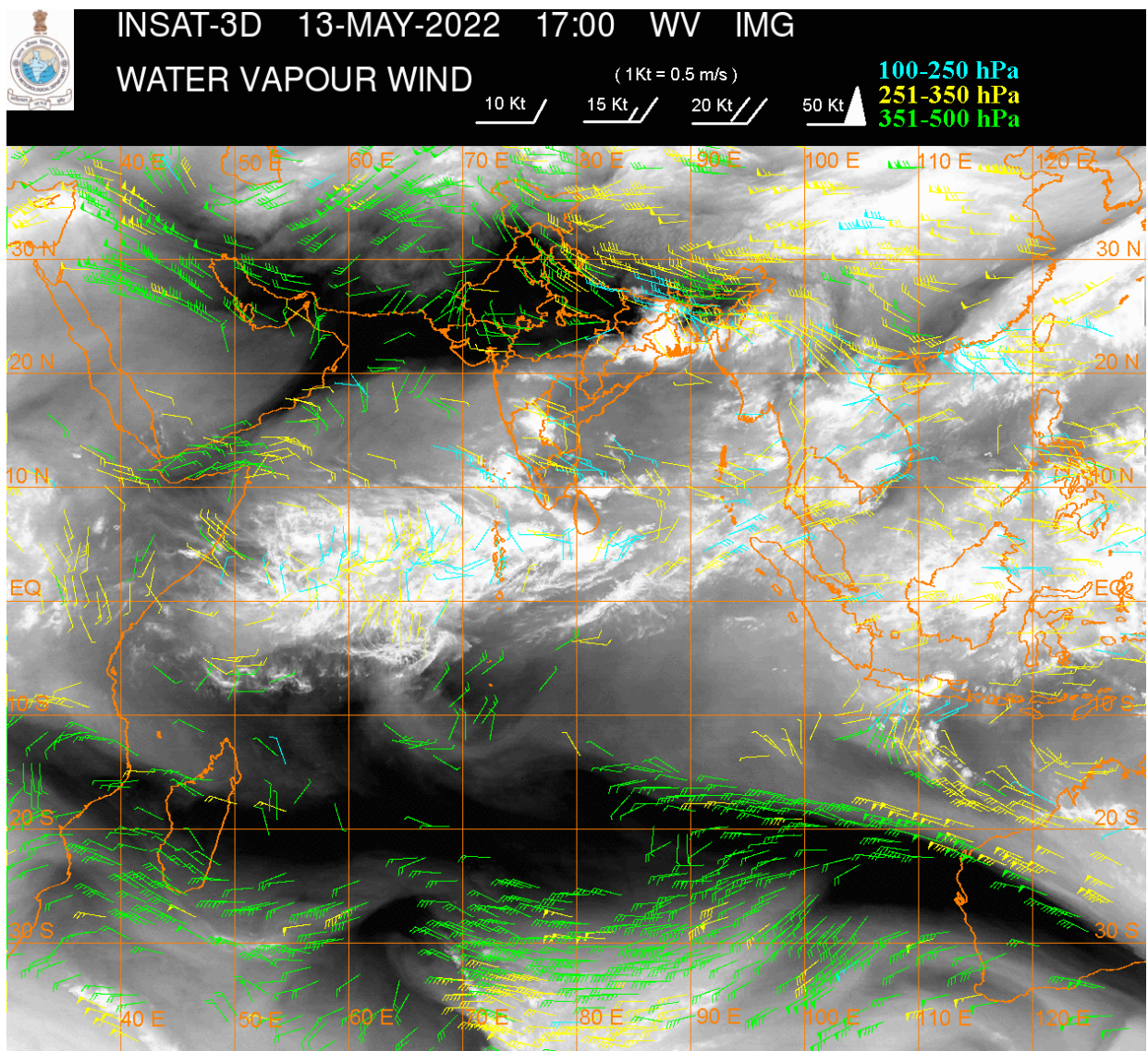
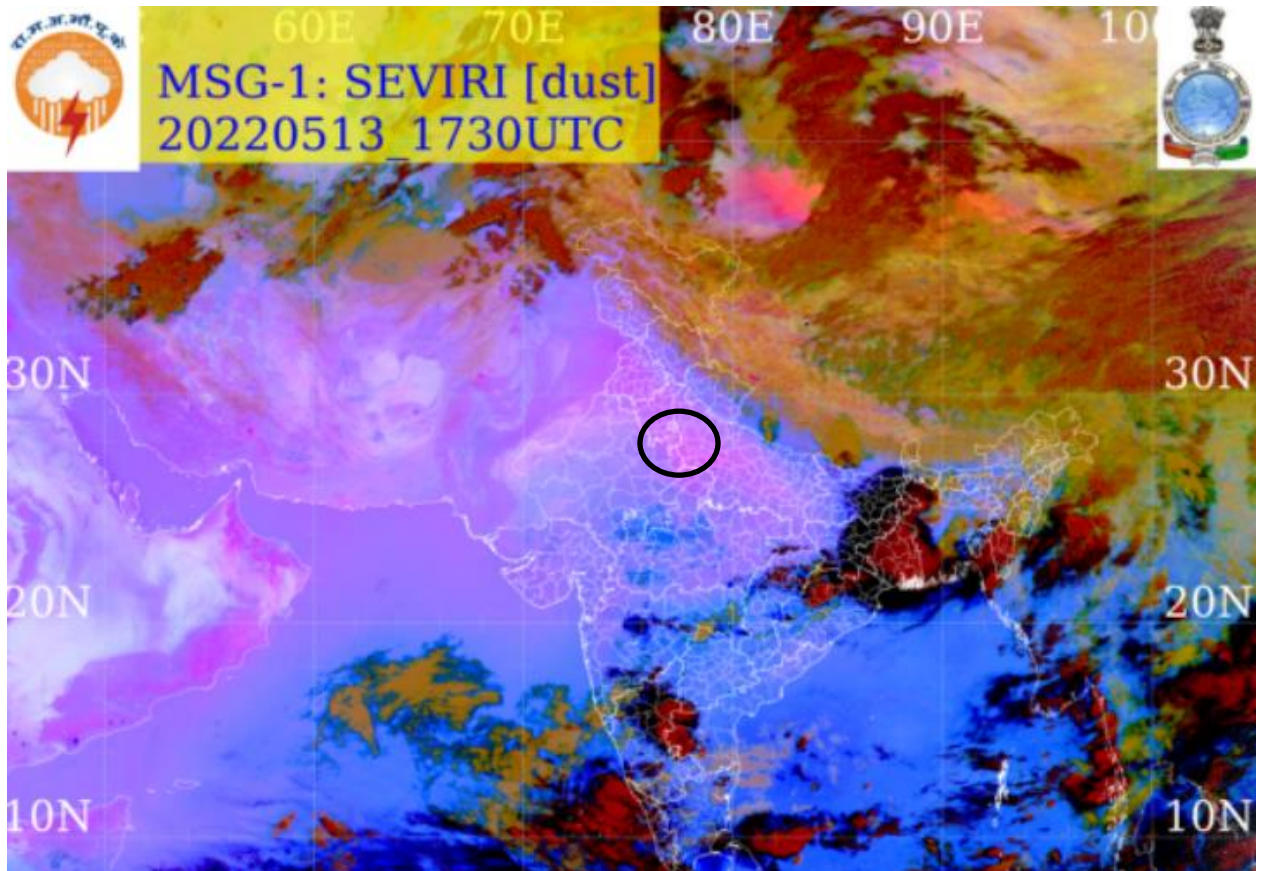
METEOSAT-8 RGB DUST PRODUCT AT 1730 UTC INDICATES DUST OVER EXT NE RAJ ADJ SE HARY EXT W UP (.)

PRECIPITATION NOWCASTING:-

(BASED ON SCOPE NOWCASTING TOOL AT 1700 UTC AT A LEAD TIME OF 03 HRS (MM/HR):-

RAINFALL UPTO 10-15 MM LIKELY OVER GWB S SHWB S MIZO EXT E KRNTK NW ORS (.)

RAINFALL UPTO 0.5-5 MM LIKELY OVER E ARUPR KER S TN LKSDP & NICOBAR ILS (.)



CLOUDS DESCRIPTION WITHIN INDIA:-

NORTH:-

SCT LOW/MED CLOUDS WITH EMBDD WK CONVTN OVER LADAKH EXT NE UP (.) ISOL TO SCT LOW/MED CLOUDS OVER J&K S HP N UTRKND (.)

EAST:-

SCT TO BKN LOW/MED CLOUDS WITH EMBDD INT TO V INT CONVTN OVER EXT E JHRKND
GWB NW ORS (MINIMUM CTT MINUS 93 DEG C) AND MOD TO INT CONVTN OVER E BHR S
JHRKND S SHWB EXT NE ORS S SHWB N MIZO E TRP (.) SCT LOW/MED CLOUDS WITH EMBDD
WK TO MOD CONVTN OVER N CHTGH N SHWB SKM REST NE STATES (.) SCT LOW/MED
CLOUDS OVER S CHTGH S ORS (.)

WEST:-

SCT LOW/MED CLOUDS WITH EMBDD WK CONVTN OVER S VID N MRTHWD SOUTH MADHYA
MAHA S KKN (.) SCT LOW/MED CLOUDS OVER SE RAJ REST MAHA MP (.)

SOUTH:-

SCT LOW/MED CLOUDS WITH EMBDD INT TO V INT CONVTN OVER E KRNTK ADJ W RYL
(.) SCT LOW/MED CLOUDS WITH EMBDD MOD TO INT CONVTN OVER LKSDP ILS (.) SCT
LOW/MED CLOUDS WITH EMBDD WK TO MOD CONVTN OVER REST KRNTK KER EXT PARTS
OF TN N TLNGN (.) SCT LOW/MED CLOUDS OVER S COTL AP REST TN (.)

ARABIAN SEA:-

SCT LOW/MED CLOUDS WITH EMBDD INT TO V INT CONVTN OVER SE ARSEA AND
COMORIN AREA (.) SCT LOW/MED CLOUDS WITH EMBDD MOD TO INT CONVTN OVER EXT
SW ARSEA AND WK TO MOD CONVTN OVER EC ARSEA (.)

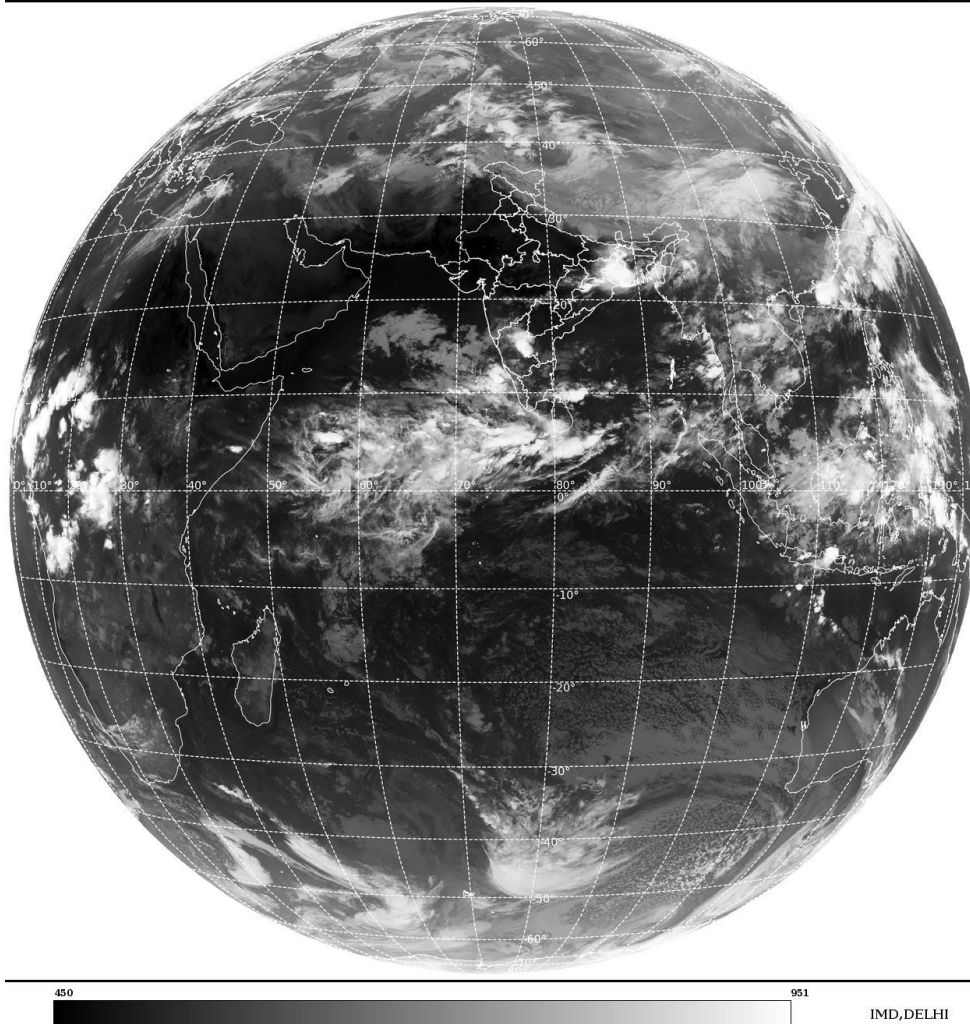
BAY OF BENGAL & ANDAMAN SEA:-

SCT LOW/MED CLOUDS WITH EMBDD INT TO V INT CONVTN OVER SOUTH WEST BAY AND
MOD TO INT CONVTN OVER SE BAY ANDAMAN SEA (.)

CLOUDS DESCRIPTION OUTSIDE INDIA:-

SAT : INSAT-3DR IMG
Thermal Infrared1 Count 10.8 um
L1B FULL DISK

13-05-2022/(1715 to 1742) GMT
13-05-2022/(2245 to 2312) IST



SCT LOW/MED CLOUDS WITH EMBDD MOD TO INT CONVTN OVER SRI LANKA MALDIVES
NEPAL BHUTAN TIBET CHINA SEA TAIWAN MYANMAR THAILAND GULF OF THAILAND
CAMBODIA LAOS VIETNAM SUMATRA STR OF MALACCA MALAYSIA BORNEO SOUTH CHINA
SEA JAVA ILS & SEA CELEBES ILS & SEA PHILIPPINES SULU SEA YELLOW SEA E CHINA AND
OVER INDIAN OCEAN BET LAT 5.0N TO 5.0S LONG 50.0E TO 95.0E (.)

TOO 13/2350 HRS IST=

LEGEND:-

| | | |
|---------------|--------------|--|
| REGION | NORTH | J&K HP PJB HARY DLH UP UTRKND |
| | EAST | BHR JHRKND CHTGH OR WB SKM NORTH- EAST STATES |
| | WEST | RAJ MP GUJ MAHA GOA |
| | SOUTH | TLNGN AP KRNTK KER TN LKSDP ANDAMAN & NICOBAR ILS |

| | | |
|---|---------------------|---|
| CLOUD DISTRIBUTION | ISOL | ISOLATED (LESS THAN 25%) |
| | SCT | SCATTERED (25 TO 50%) |
| | BKN | BROKEN (51 TO 75%) |
| | SLD | SOLID (GREATER THAN 75%) |
| CLOUDS TOP TEMPERATURE | CTT | CLOUD TOP TEMPERATURE |
| CONVECTION | WK CONVTN | WEAK CONVECTION (CTT GREATER THAN -25°C) |
| | MOD CONVTN | MODERATE CONVECTION (CTT BETWEEN -25°C TO -40°C) |
| | INT CONVTN | INTENSE CONVECTION (CTT BETWEEN -41°C TO -70°C) |
| | V INT CONVTN | VERY INTENSE CONVECTION (CTT LESS THAN -70°C) |
| METEOROLOGICAL SUB-DIVISIONS, STATES & UNION TERRITORIES | ARUPR | ARUNACHAL PRADESH |
| | BHR | BIHAR |
| | CHTGH | CHHATTISGARH |
| | COTL AP | COASTAL ANDHRA PRADESH |
| | COTL KRNTK | COASTAL KARNATAKA |
| | COTL ORS | COASTAL ORISSA |
| | GUJ | GUJARAT |
| | GWB | GANGETIC WEST BENGAL |
| | HARY | HARYANA |
| | DLH | DELHI |
| | HP | HIMACHAL PRADESH |
| | J&K | JAMMU AND KASHMIR |
| | JHRKND | JHARKHAND |
| | KER | KERALA |
| KKN | KONKAN | |

| | | |
|----------------------|------------------------|-------------------------------------|
| | LKSDP | LAKSHADWEEP |
| | M MAHA | MADHYA MAHARASHTRA |
| | MAHA | MAHARASHTRA |
| | MANI | MANIPUR |
| | MEGHA | MEGHALAYA |
| | MIZO | MIZORAM |
| | MP | MADHYA PRADESH |
| | MRTHWD | MARATHWADA |
| | NAGA | NAGALAND |
| | N COTL AP | NORTH COASTAL ANDHRA PRADESH |
| | NIK | NORTH INTERIOR KARNATAKA |
| | ORS | ORISSA |
| | PJB | PUNJAB |
| | RAJ | RAJASTHAN |
| | RYLSM | RAYALASEEMA |
| | SAU & KUTCH | SAURASHTRA & KUTCH |
| | SHWB | SUB-HIMALAYAN WEST BENGAL |
| | SIK | SOUTH INTERIOR KARNATAKA |
| | SKM | SIKKIM |
| | TLNGN | TELANGANA |
| | TN | TAMIL NADU |
| | TRP | TRIPURA |
| | UP | UTTAR PRADESH |
| | UTRKND | UTTARAKHAND |
| | VID | VIDHARBHA |
| | SHWB | SUB HIMALAYAN WEST BENGAL |
| | GWB | GANGETIC WEST BENGAL |
| | ARSEA | ARABIAN SEA |
| | ILS | ISLANDS |
| MISCELLANEOUS | ASSW | IN ASSOCIATION WITH |
| | ASSTD | ASSOCIATED |
| | LLC | LOW LEVEL CIRCULATION |
| | EMBDD | EMBEDDED |
| | N/HOOD | NEIGHBOURHOOD |
| | EXT | EXTREME |