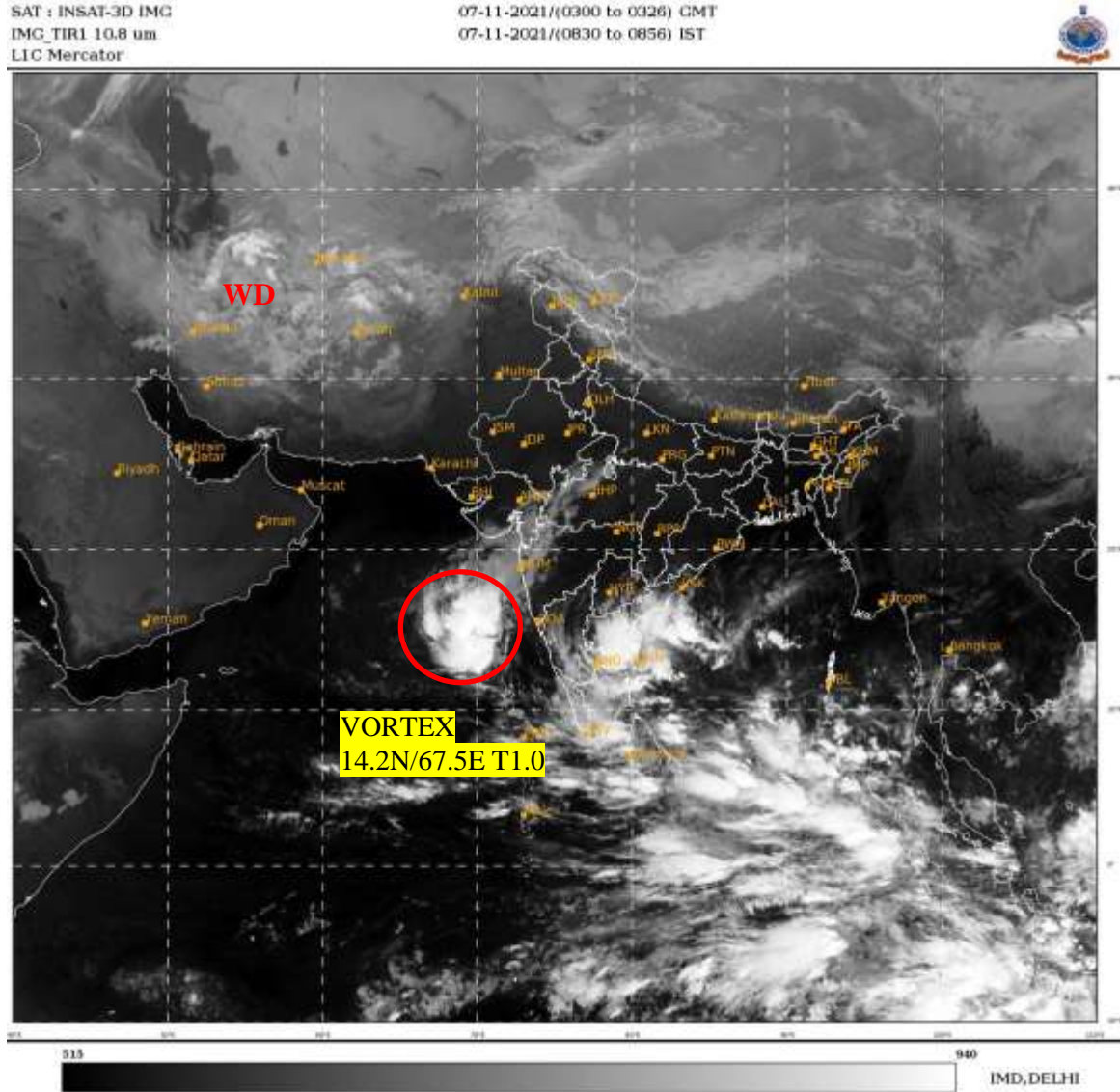




SATELLITE BULLETIN BASED ON SATELLITE
IMAGERIES AND PRODUCTS
07.11.2021 TIME 0300 UTC



TCIN50 DEMS 070300

SATELLITE BULLETIN BASED ON INSAT-3D PIC OF 070300 UTC (.)

REGION COVERED BETWEEN LAT 50.0°N TO 30.0°S AND LONG 40.0°E TO 125.0°E (.)

SALIENT FEATURES:-

VORTEX (WML) OVER EC ARSEA:-

VORTEX (WML) OVER EC ARSEA CENTERED WITHIN HALF A DEG OF **14.2N/67.5E** (.) INTENSITY **T1.0** (.) (.) ASSTD BKN LOW/MED CLOUDS WITH EMBDD INT TO V INT CONVTN OVER EC ARSEA BET LAT 12.0N TO 19.0N LONG 67.0E TO 71.5E (.)

WESTERN DISTURBANCE (WD):-

SCT MULTILAYERED CLOUDS OVER EXT S CASPIAN SEA W IRAN & N/HOOD IN ASSW **WD** OVER THE AREA (.)



INSAT-3D 07-NOV-2021 03:00 WV IMG

WATER VAPOUR WIND

(1Kt = 0.5 m/s)

10 Kt

15 Kt

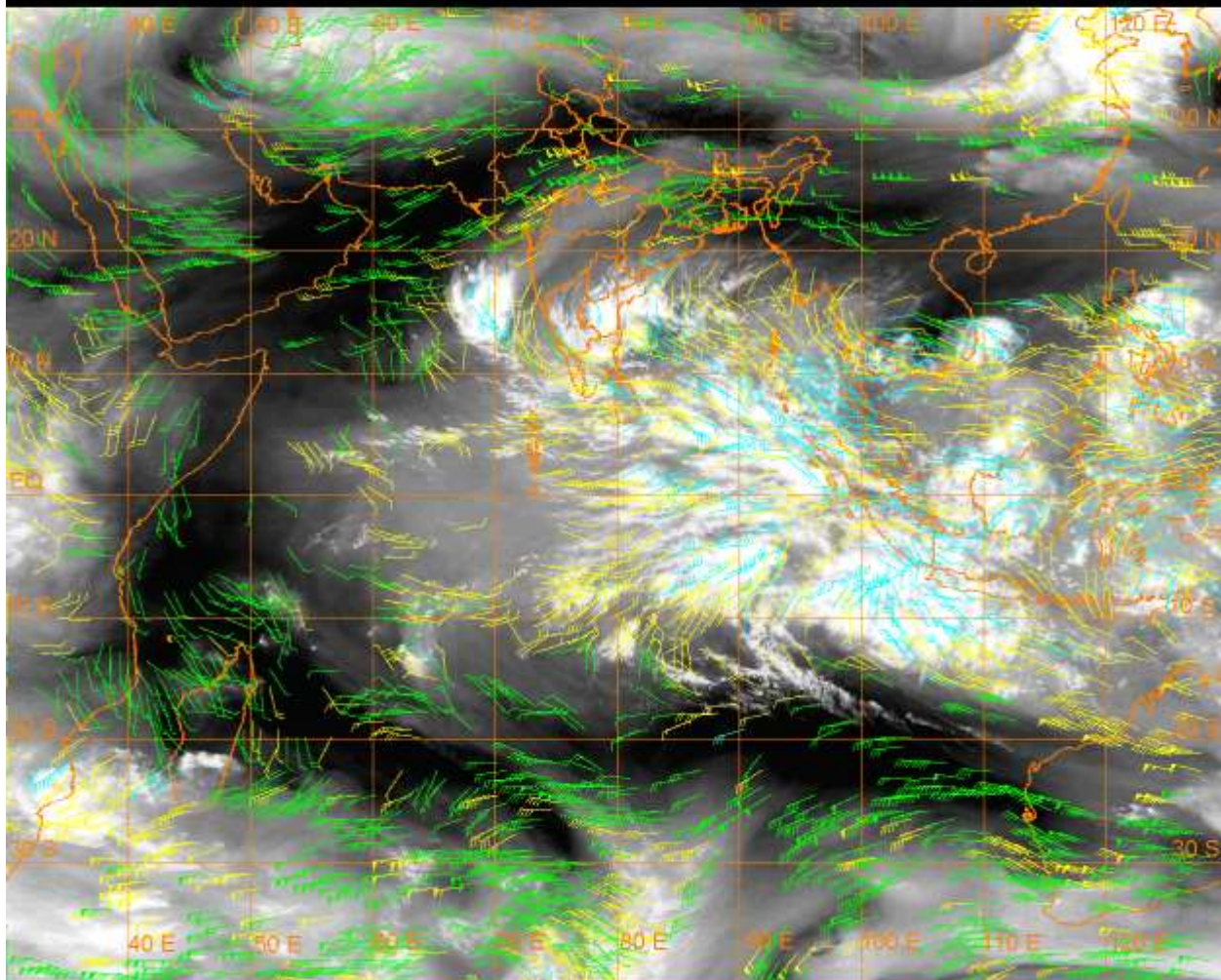
20 Kt

50 Kt

100-250 hPa

251-350 hPa

351-500 hPa



CLOUDS DESCRIPTION WITHIN INDIA:-

NORTH:-

SCT LOW/MED CLOUDS OVER LADAKH (.)

EAST:-

ISOL TO SCT LOW/MED CLOUDS OVER EXT S CHTGH EXT S ORS SKM (.)

WEST:-

SCT LOW/MED CLOUDS WITH EMBDD WK CONV TN OVER N KKN ADJ NORTH M MAHA E GUJ SW MP EXT (.)

SOUTH:-

BKN LOW/MED CLOUDS WITH EMBDD MOD TO INT CONV TN OVER KER SIK TN S COTL AP RYLSMA (.) SCT LOW/MED CLOUDS WITH EMBDD ISOL WK TO MOD CONV TN OVER C KRNTK S TLNGN NC AP LKSDP S ANDAMAN NICOBAR ILS (.)

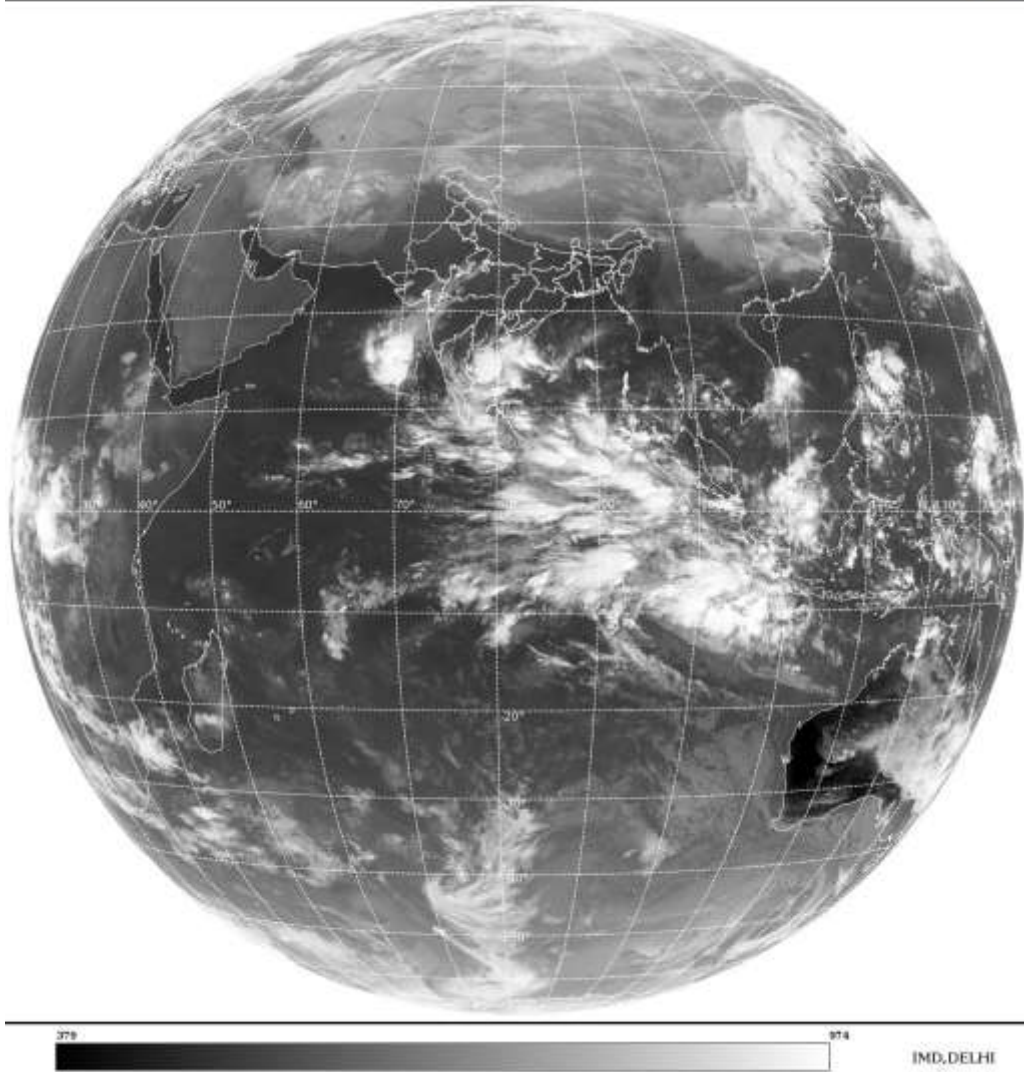
ARABIAN SEA:-

BKN LOW/MED CLOUDS WITH EMBDD INT TO V INT CONV TN OVER EC ARSEA (.) SCT LOW/MED CLOUDS WITH EMBDD MOD TO INT CONV TN OVER SE ARSEA & COMORIN (.) SCT LOW/MED CLOUDS WITH EMBDD WK TO MOD CONV TN OVER GULF OF CAMBAY (.)

BAY OF BENGAL & ANDAMAN SEA:-

SCT LOW/MED CLOUDS WITH EMBDD INT TO V INT CONV TN OVER WC BAY OFF AP COAST SOUTHERN PARTS OF SOUTH BAY (.) SCT LOW/MED CLOUDS WITH EMBDD MOD TO INT CONV TN OVER REST CENTRAL & S ANDAMAN SEA (.)

CLOUDS DESCRIPTION OUTSIDE INDIA:-



SCT LOW/MED CLOUDS WITH EMBDD MOD TO INT CONVTN OVER SRI LANKA GULF OF MANNAR PALK STR MALDIVES N TIBET CHINA THAILAND COMBODIA GULF OF THAILAND SUMATRA STR OF MALACCA BORNEO SOUTH CHINA SEA JAVA ILS & SEA CELEBES ILS & SEA PHILIPPINES SEA YELLOW SEA AND OVER INDIAN OCEAN BET LAT 5.0N TO 16.0S LONG 60.0E TO 112.0E(.)

TOO 07/0930EF=

NNNN

LEGEND:-

REGION	NORTH	J&K HP PJB HARY DLH UP UTRKND
	EAST	BHR JHRKND CHTGH ORS WB SKMNORTH- EAST STATES
	WEST	RAJ MP GUJ MAHA GOA
	SOUTH	TLNGN AP KRNTK KER TN LKSDP ANDAMAN & NICOBAR ILS

CLOUD DISTRIBUTION	ISOL	ISOLATED (LESS THAN 25%)	
	SCT	SCATTERED (25 TO 50%)	
	BKN	BROKEN (51 TO 75%)	
	SLD	SOLID (GREATER THAN 75%)	
CLOUDS TOP TEMPERATURE	CTT	CLOUD TOP TEMPERATURE	
CONVECTION	WK CONVTN	WEAK CONVECTION (CTT GREATER THAN -25°C)	
	MOD CONVTN	MODERATE CONVECTION (CTT BETWEEN -25°C TO -40°C)	
	INT CONVTN	INTENSE CONVECTION (CTT BETWEEN -41°C TO -70°C)	
	V INT CONVTN	VERY INTENSE CONVECTION (CTT LESS THAN -70°C)	
METEOROLOGICAL SUB-DIVISIONS, STATES & UNION TERRITORIES	ARUPR	ARUNACHAL PRADESH	
	BHR	BIHAR	
	CHTGH	CHHATTISGARH	
	COTL AP	COASTAL ANDHRA PRADESH	
	COTL KRNTK	COASTAL KARNATAKA	
	COTL ORS	COASTAL ORISSA	
	GUJ	GUJARAT	
	GWB	GANGETIC WEST BENGAL	
	HARY	HARYANA	
	DLH	DELHI	
	HP	HIMACHAL PRADESH	
	J&K	JAMMU AND KASHMIR	
	JHRKND	JHARKHAND	
	KER	KERALA	
	KKN	KONKAN	
	LKSDP	LAKSHADWEEP	
	M MAHA	MADHYA MAHARASHTRA	
	MAHA	MAHARASHTRA	
	MANI	MANIPUR	
	MEGHA	MEGHALAYA	
	MIZO	MIZORAM	
	MP	MADHYA PRADESH	
		MRTHWD	MARATHWADA
		NAGA	NAGALAND
N COTL AP		NORTH COASTAL ANDHRA PRADESH	
NIK		NORTH INTERIOR KARNATAKA	
ORS		ORISSA	
PJB		PUNJAB	
RAJ		RAJASTHAN	
RYLSM		RAYALASEEMA	
SAU & KUTCH		SAURASHTRA & KUTCH	
SHWB		SUB-HIMALAYAN WEST BENGAL	
SIK		SOUTH INTERIOR KARNATAKA	
SKM		SIKKIM	

	TLNGN	TELANGANA
	TN	TAMIL NADU
	TRP	TRIPURA
	UP	UTTAR PRADESH
	UTRKND	UTTARAKHAND
	VID	VIDHARBHA
	SHWB	SUB HIMALAYAN WEST BENGAL
	GWB	GANGETIC WEST BENGAL
	ARSEA	ARABIAN SEA
	ILS	ISLANDS
MISCELLANEOUS	ASSW	IN ASSOCIATION WITH
	ASSTD	ASSOCIATED
	LLC	LOW LEVEL CIRCULATION
	EMBDD	EMBEDDED
	N/HOOD	NEIGHBOURHOOD
	EXT	EXTREME