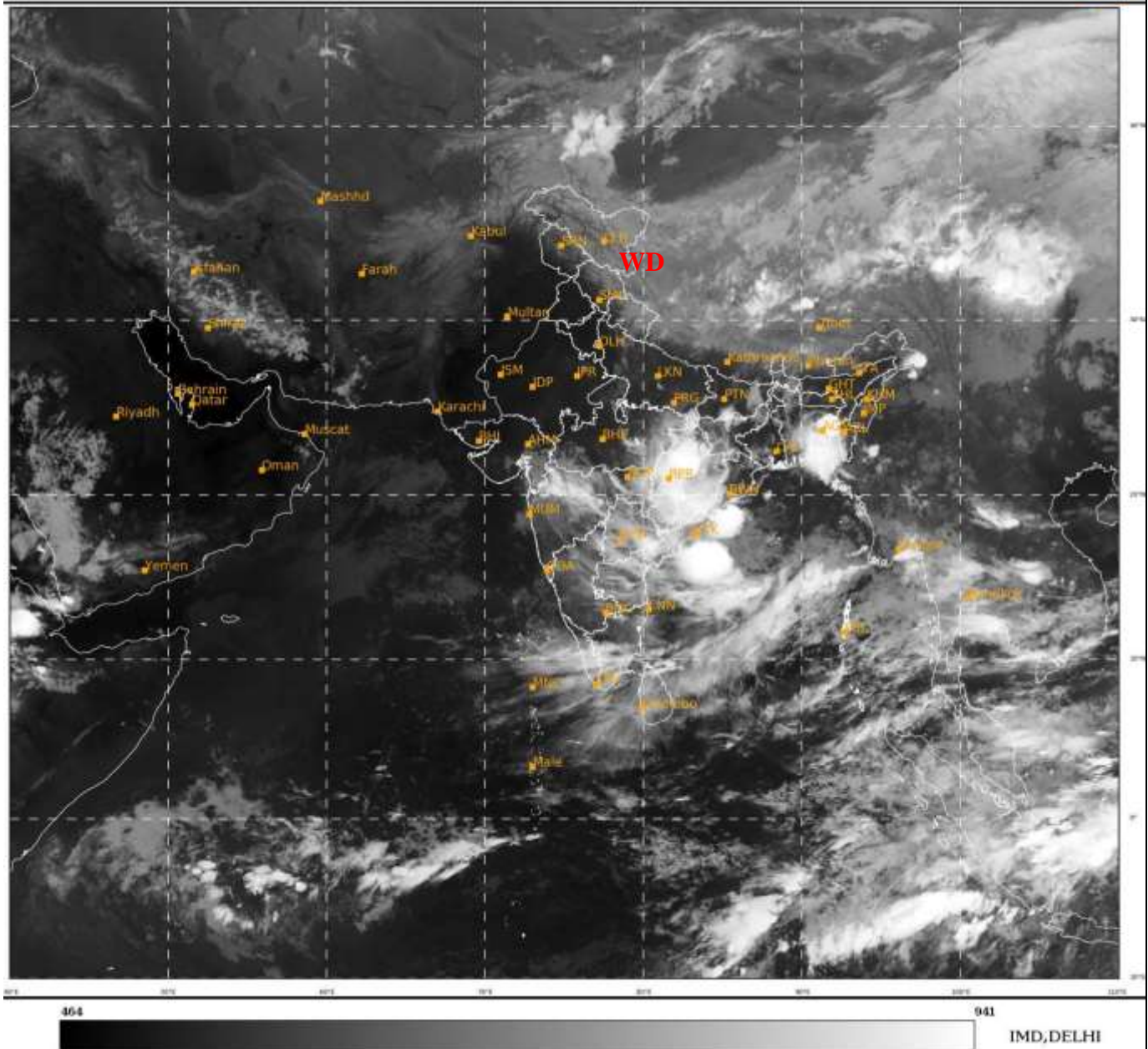




**SATELLITE BULLETIN BASED ON SATELLITE  
IMAGERIES AND PRODUCTS**  
**18.09.2022 TIME 1800 UTC**

SAT : INSAT-3DR IMG  
IMG TIR1 10.8 um  
LIC Mercator

18-09-2022/(1715 to 1742) GMT  
18-09-2022/(2245 to 2312) IST



TCIN50 DEMS 181800

SATELLITE BULLETIN BASED ON INSAT-3D PIC OF 181715 UTC (.)

REGION COVERED BETWEEN LAT 50.0°N TO 35.0°S AND LONG 40.0°E TO 125.0°E (.)

**SALIENT FEATURES:-**

**WESTERN DISTURBANCE:-**

SCT MULTILAYERED CLOUDS OVER LADAKH HP UTRKND TIBET ADJ CHINA IN ASSW **WD** OVER THE AREA (.)

**CONVECTION OVER CENTRAL ADJ NORTH BAY:-**

INTENSE TO VERY INTENSE CONVECTION OVER CENTRAL ADJ NORTH BAY PERSISTS (.)  
MINIMUM CTT MINUS **93** DEG C (.)

**INTENSE CONVECTIVE CLOUDS:-**

INTENSE CONVECTIVE CLOUDS OBSERVED OVER S BHR JHRKND CHTGH ORS N COTL AP  
TLNGN VID KER TN TRP N M MAHA (.)





INSAT-3DR 18-SEP-2022 17:15 WV IMG

WATER VAPOUR WIND

(1Kt = 0.5 m/s)

10 Kt

15 Kt

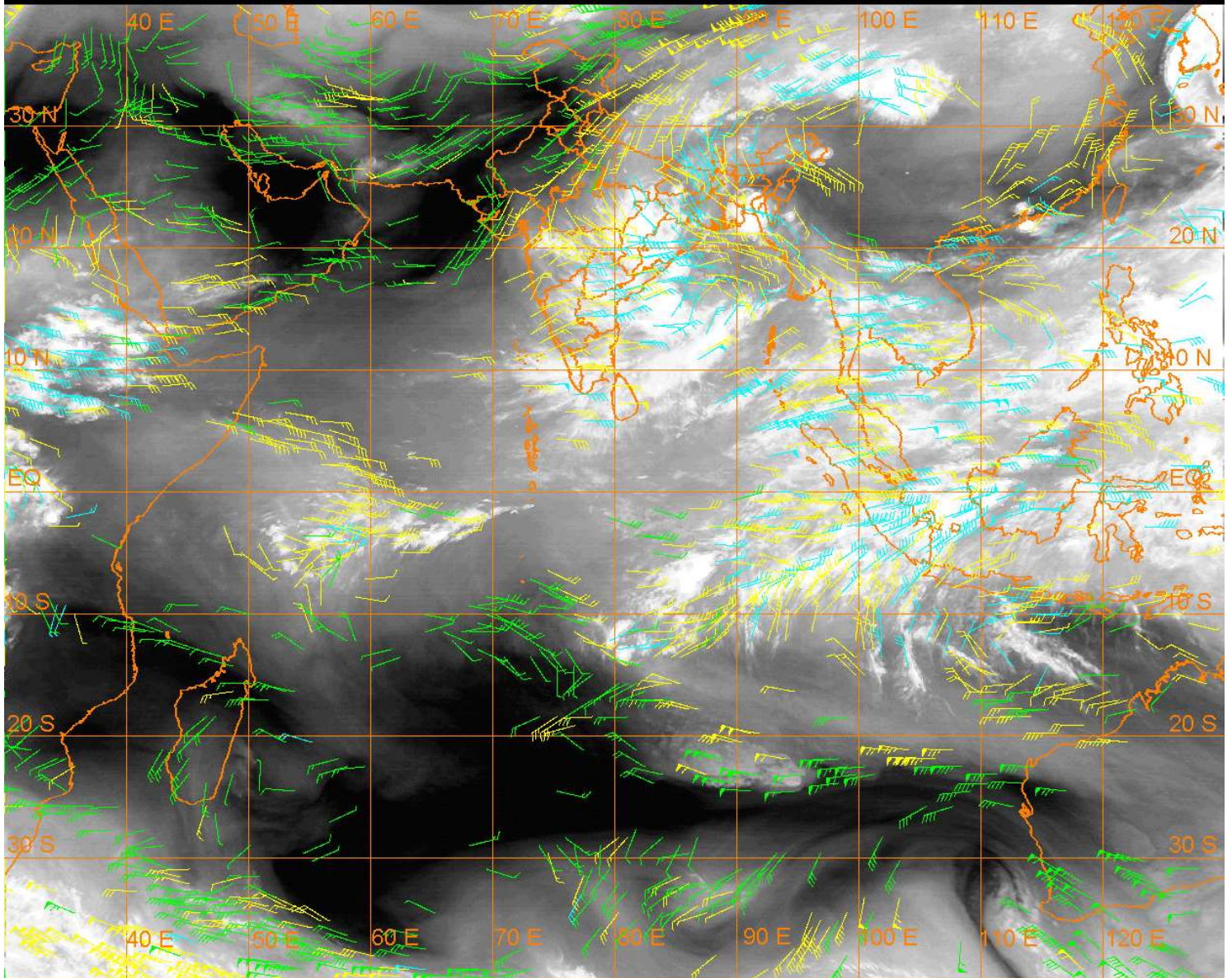
20 Kt

50 Kt

100-250 hPa

251-350 hPa

351-500 hPa



**CLOUDS DESCRIPTION WITHIN INDIA:-**

**NORTH:-**

SCT LOW/MED CLOUDS WITH EMBDD MOD TO INT CONVTN OVER NW LADAKH NE UP AND ISOL WK TO MOD CONVTN OVER REST LADAKH HP (.) SCT LOW/MED CLOUDS OVER J&K SW UP (.)

**EAST:-**

SCT TO BKN LOW/MED CLOUDS WITH EMBDD INT TO V INT CONVTN OVER CHTGH ORS NE ARUPR TRP (MINIMUM CTT MINUS 93 DEG C) N JHRKND N BHR S GWB (MINIMUM CTT MINUS 80 DEG C) (.) SCT LOW/MED CLOUDS WITH EMBDD MOD TO INT CONVTN OVER SHWB NE STATES BD AND ISOL WK TO MOD CONVTN OVER REST BHR N GWB SKM (.)

**WEST:-**

SCT LOW/MED CLOUDS WITH EMBDD MOD TO INT CONVTN OVER E MP VID NORTH MADHYA MAHA SE GUJ AND ISOL WK TO MOD CONVTN OVER N KKN (.) SCT LOW/MED CLOUDS OVER RAJ W MP REST GUJ REST MAHA & GOA (.)

**SOUTH:-**

SCT LOW/MED CLOUDS WITH EMBDD INT TO V INT CONVTN OVER N COTL AP (MINIMUM CTT MINUS 72 DEG C) (.) SCT LOW/MED CLOUDS WITH EMBDD MOD TO INT CONVTN OVER TLNGN RYLSM KER AND WK TO MOD CONVTN OVER KRNTK ANDAMAN & NICOBAR ILS (.) SCT LOW/MED CLOUDS OVER S COTL AP & LKSDP ILS (.)



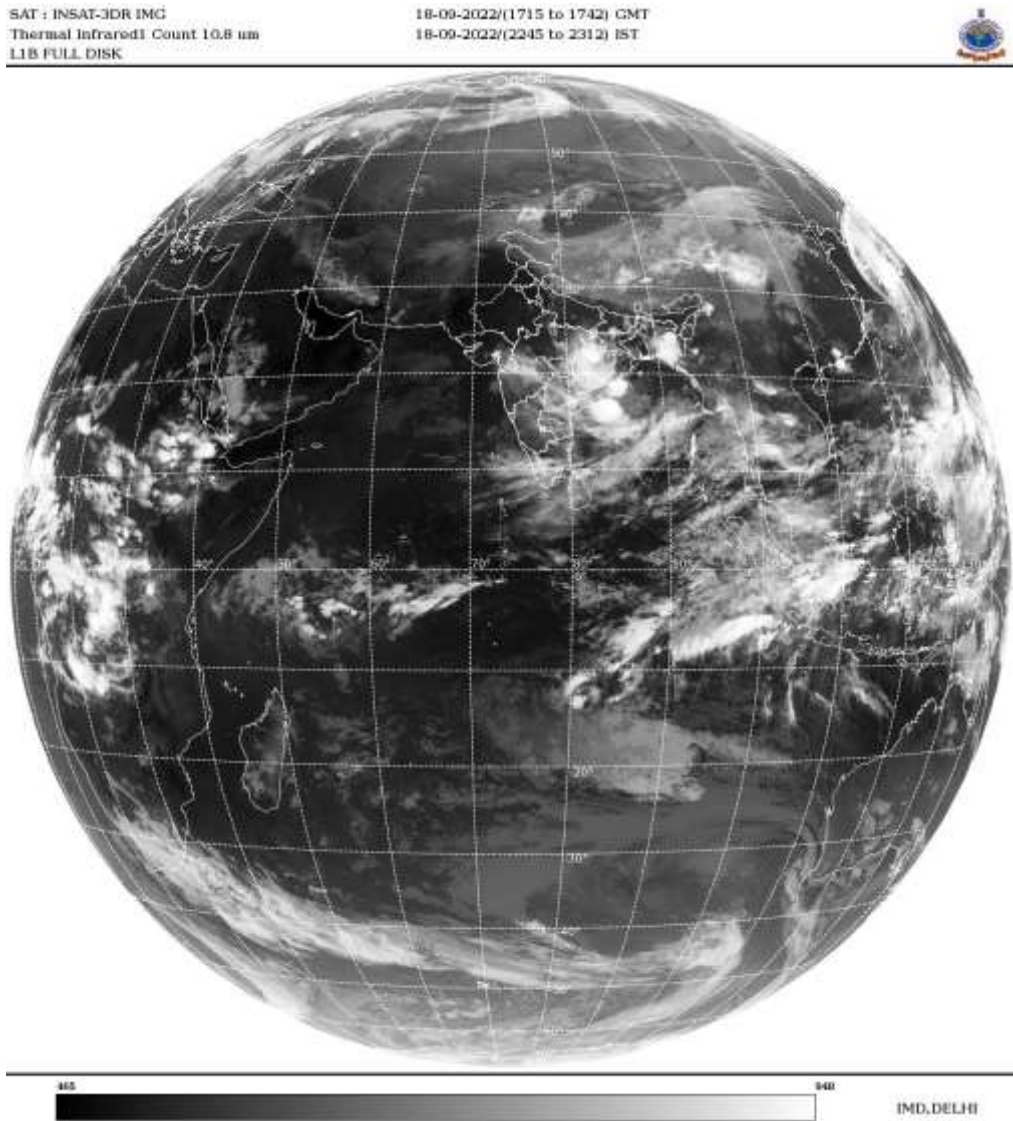
**ARABIAN SEA:-**

SCT LOW/MED CLOUDS WITH EMBDD ISOL WK TO MOD CONVTN OVER SE ARSEA (.)

**BAY OF BENGAL & ANDAMAN SEA:-**

SCT TO BKN LOW/MED CLOUDS WITH EMBDD INT TO V INT CONVTN OVER CENTRAL BAY (.)  
SCT LOW/MED CLOUDS WITH EMBDD MOD TO INT CONVTN OVER REST BAY ANDAMAN SEA  
GULF OF MARTABAN (.)

**CLOUDS DESCRIPTION OUTSIDE INDIA:-**



SCT LOW/MED CLOUDS WITH EMBDD MOD TO INT CONVTN OVER SRILANKA NEPAL  
BHUTAN TIBET CHINA MYANMAR THAILAND GULF OF THAILAND CAMBODIA LAOS  
VIETNAM SUMATRA STR OF MALACCA MALAYSIA BORNEO SOUTH CHINA SEA JAVA ILS &  
SEA CELEBES ILS & SEA PHILIPPINES AND OVER INDIAN OCEAN BET LAT 5.0N TO 10.0S  
LONG 50.0E TO 70.0E AND BET LAT 5.0N TO 15.0S LONG 80.0E TO 110.0E (.)

TOO 18/2340 HRS IST=

NNNN

**LEGEND:-**

REGION	NORTH	J&K HP PJB HARY DLH UP UTRKND
	EAST	BHR JHRKND CHTGH OR WB SKM NORTH- EAST STATES

	<b>WEST</b>	<b>RAJ MP GUJ MAHA GOA</b>
	<b>SOUTH</b>	<b>TLNGN AP KRNTK KER TN LKSDP ANDAMAN &amp; NICOBAR ILS</b>
<b>CLOUD DISTRIBUTION</b>	<b>ISOL</b>	<b>ISOLATED (LESS THAN 25%)</b>
	<b>SCT</b>	<b>SCATTERED (25 TO 50%)</b>
	<b>BKN</b>	<b>BROKEN (51 TO 75%)</b>
	<b>SLD</b>	<b>SOLID (GREATER THAN 75%)</b>
<b>CLOUDS TOP TEMPERATURE</b>	<b>CTT</b>	<b>CLOUD TOP TEMPERATURE</b>
<b>CONVECTION</b>	<b>WK CONVTN</b>	<b>WEAK CONVECTION (CTT GREATER THAN -25°C)</b>
	<b>MOD CONVTN</b>	<b>MODERATE CONVECTION (CTT BETWEEN -25°C TO -40°C)</b>
	<b>INT CONVTN</b>	<b>INTENSE CONVECTION (CTT BETWEEN -41°C TO -70°C)</b>
	<b>V INT CONVTN</b>	<b>VERY INTENSE CONVECTION (CTT LESS THAN -70°C)</b>
<b>METEOROLOGICAL SUB-DIVISIONS, STATES &amp; UNION TERRITORIES</b>	<b>ARUPR</b>	<b>ARUNACHAL PRADESH</b>
	<b>BHR</b>	<b>BIHAR</b>
	<b>CHTGH</b>	<b>CHHATTISGARH</b>
	<b>COTL AP</b>	<b>COASTAL ANDHRA PRADESH</b>
	<b>COTL KRNTK</b>	<b>COASTAL KARNATAKA</b>
	<b>COTL ORS</b>	<b>COASTAL ORISSA</b>
	<b>GUJ</b>	<b>GUJARAT</b>
	<b>GWB</b>	<b>GANGETIC WEST BENGAL</b>
	<b>HARY</b>	<b>HARYANA</b>
	<b>DLH</b>	<b>DELHI</b>
	<b>HP</b>	<b>HIMACHAL PRADESH</b>
	<b>J&amp;K</b>	<b>JAMMU AND KASHMIR</b>
	<b>JHRKND</b>	<b>JHARKHAND</b>
	<b>KER</b>	<b>KERALA</b>
	<b>KKN</b>	<b>KONKAN</b>
	<b>LKSDP</b>	<b>LAKSHADWEEP</b>
	<b>M MAHA</b>	<b>MADHYA MAHARASHTRA</b>
	<b>MAHA</b>	<b>MAHARASHTRA</b>
	<b>MANI</b>	<b>MANIPUR</b>
	<b>MEGHA</b>	<b>MEGHALAYA</b>
	<b>MIZO</b>	<b>MIZORAM</b>
<b>MP</b>	<b>MADHYA PRADESH</b>	
	<b>MRTHWD</b>	<b>MARATHWADA</b>
	<b>NAGA</b>	<b>NAGALAND</b>
	<b>N COTL AP</b>	<b>NORTH COASTAL ANDHRA PRADESH</b>
	<b>NIK</b>	<b>NORTH INTERIOR KARNATAKA</b>
	<b>ORS</b>	<b>ORISSA</b>
	<b>PJB</b>	<b>PUNJAB</b>
	<b>RAJ</b>	<b>RAJASTHAN</b>
	<b>RYLSM</b>	<b>RAYALASEEMA</b>

	<b>SAU &amp; KUTCH</b>	<b>SAURASHTRA &amp; KUTCH</b>
	<b>SHWB</b>	<b>SUB-HIMALAYAN WEST BENGAL</b>
	<b>SIK</b>	<b>SOUTH INTERIOR KARNATAKA</b>
	<b>SKM</b>	<b>SIKKIM</b>
	<b>TLNGN</b>	<b>TELANGANA</b>
	<b>TN</b>	<b>TAMIL NADU</b>
	<b>TRP</b>	<b>TRIPURA</b>
	<b>UP</b>	<b>UTTAR PRADESH</b>
	<b>UTRKND</b>	<b>UTTARAKHAND</b>
	<b>VID</b>	<b>VIDHARBHA</b>
	<b>SHWB</b>	<b>SUB HIMALAYAN WEST BENGAL</b>
	<b>GWB</b>	<b>GANGETIC WEST BENGAL</b>
	<b>ARSEA</b>	<b>ARABIAN SEA</b>
	<b>ILS</b>	<b>ISLANDS</b>
<b>MISCELLANEOUS</b>	<b>ASSW</b>	<b>IN ASSOCIATION WITH</b>
	<b>ASSTD</b>	<b>ASSOCIATED</b>
	<b>LLC</b>	<b>LOW LEVEL CIRCULATION</b>
	<b>EMBDD</b>	<b>EMBEDDED</b>
	<b>N/HOOD</b>	<b>NEIGHBOURHOOD</b>
	<b>EXT</b>	<b>EXTREME</b>