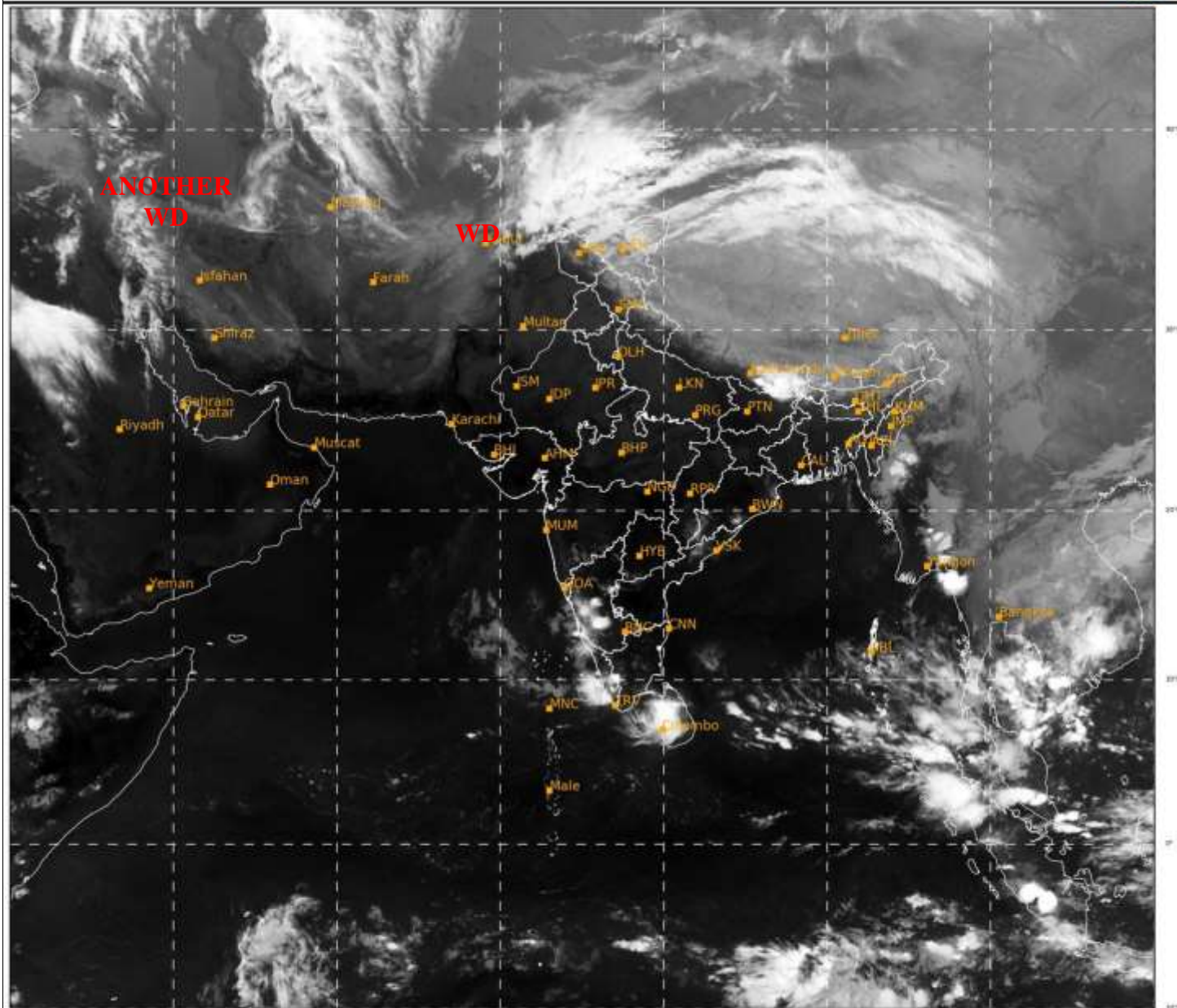




**SATELLITE BULLETIN BASED ON SATELLITE
IMAGERIES AND PRODUCTS**
02.04.2022 TIME 1500 UTC

SAT : INSAT-3D IMG
IMG_TIR1 10.8 um
LIC Mercator

02-04-2022/(1500 to 1526) GMT
02-04-2022/(2030 to 2056) IST



444

929

IMD, DELHI

TCIN50 DEMS 021500

SATELLITE BULLETIN BASED ON INSAT-3D PIC OF 021500 UTC (.)

REGION COVERED BETWEEN LAT 50.0°N TO 30.0°S AND LONG 40.0°E TO 125.0°E (.)

SALIENT FEATURES:-

WESTERN DISTURBANCE (WD):-

SCT MULTILAYERED CLOUDS OVER E AFGAN EXT N PAK N J&K LADAKH AND N/HOOD IN ASSW **WD** OVER THE AREA (.)

SCT MULTILAYERED CLOUDS OVER N IRAN TURKMENISTAN AND N/HOOD IN ASSW **ANOTHER WD** OVER THE AREA (.)

CONVECTIVE ACTIVITY:-

CONVECTIVE ACTIVITIES OBSERVED OVER SKM W ARUPR S CHTGH S & NE ORS N COTL AP EXT SW TLNGN ADJ RYLSM W SIK KER S TN (.)

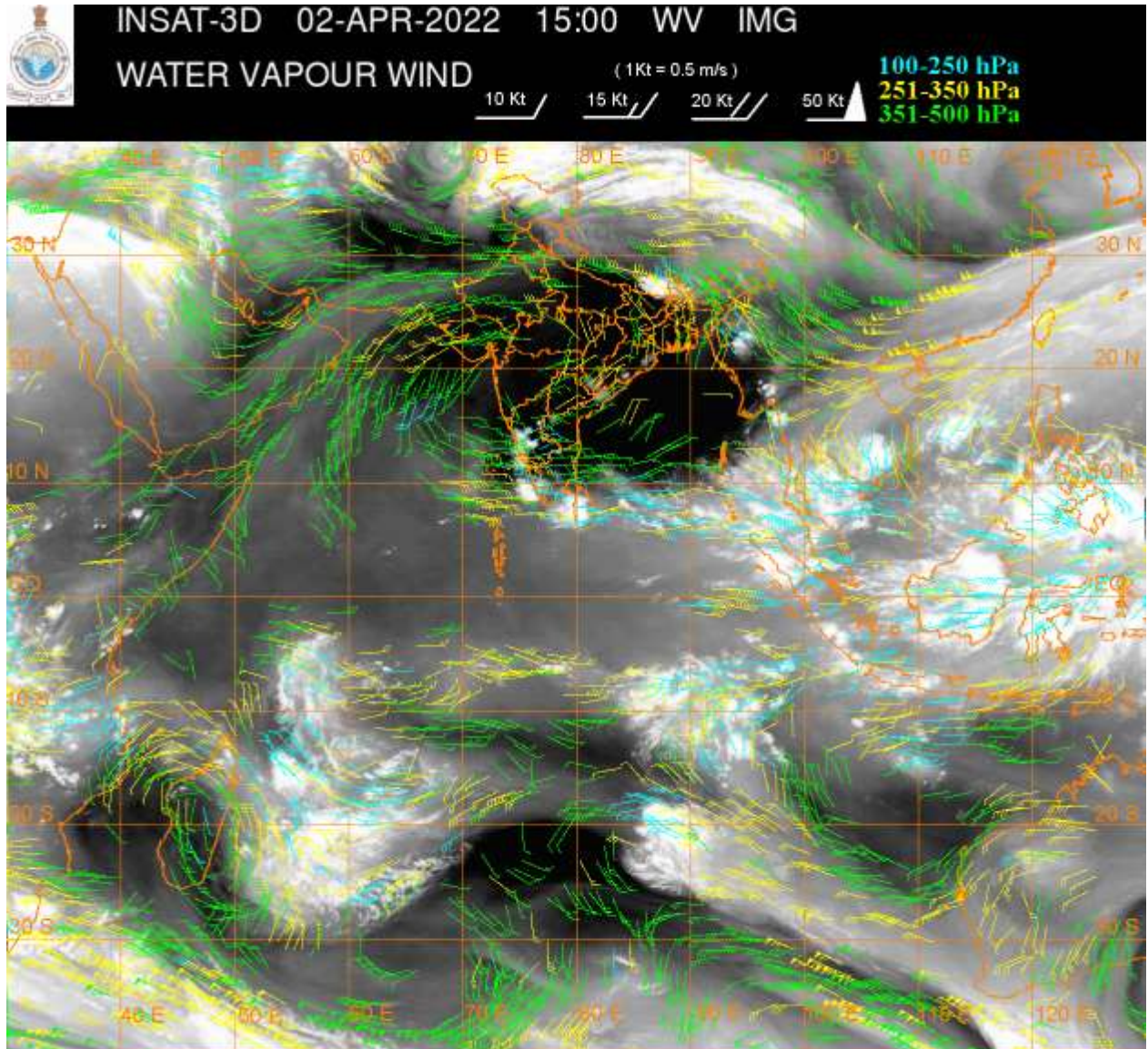
PRECIPITATION NOWCASTING:-

(BASED ON SCOPE NOWCASTING TOOL AT 1200 UTC AT A LEAD TIME OF 03 HRS (MM/HR):-

RAINFALL UPTO 15-20 MM OBSERVED OVER SIK C KRNTK N KER (.)

RAINFALL UPTO 5-10 MM OBSERVED OVER ARUPR S KER (.)

RAINFALL UPTO 1-2 MM OBSERVED OVER EXT NE BHR N SHWB EXT S ANDAMAN ILS (.)



CLOUDS DESCRIPTION WITHIN INDIA:-

NORTH:-

SCT LOW/MED CLOUDS WITH EMBDD MOD TO INT CONVTN OVER LADAKH N J&K AND WK CONVTN OVER N HP N UTRKND (.) SCT LOW/MED CLOUDS OVER S J&K SE HP S UTRKND (.)

EAST:-

SCT LOW/MED CLOUDS WITH EMBDD MOD TO INT CONVTN OVER SKM S ARUPR EXT N BHR (.) SCT LOW/MED CLOUDS WITH EMBDD WK CONVTN OVER N SHWB S CHGTH S ORS ARUPR ASSAM NAGA MANI (.) SCT LOW/MED CLOUDS OVER E BHR E JHRKND GWB S SHWB MEGHA MIZO TRP & BD (.)

WEST:-

SCT LOW/MED CLOUDS WITH EMBDD ISOL WK CONVTN OVER MRTHWD (.) SCT LOW/MED CLOUDS OVER EXT SOUTH MADHYA MAHA (.)

SOUTH:-

SCT LOW/MED CLOUDS WITH EMBDD INT TO V INT CONVTN OVER KRNTK KER (MINIMUM CTT MINUS 69 DEG C) (.) SCT LOW/MED CLOUDS WITH EMBDD MOD TO INT CONVTN OVER W TLNGN EXT N RYLM N COTL AP AND WK TO MOD CONVTN OVER REST KRNTK NW TN LKSDP ANDAMAN & NICOBAR ILS (.) SCT LOW/MED CLOUDS OVER NE TLNGN REST RYLSM (.)

ARABIAN SEA:-

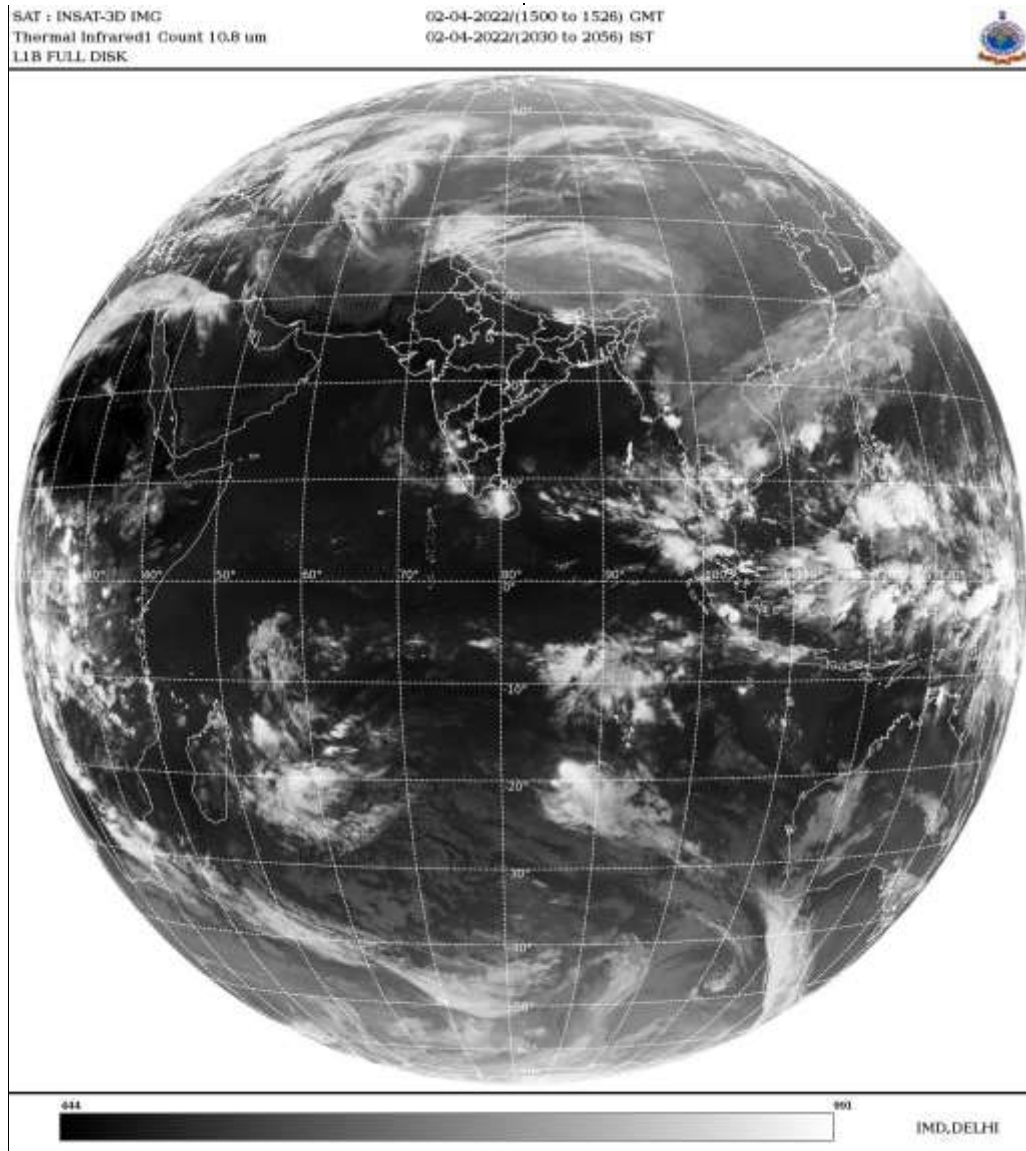
SCT LOW/MED CLOUDS WITH EMBDD MOD TO INT CONVTN OVER SE ARSEA OFF KER-KRNTK COAST & N/HOOD AND LKSDP AREA (.) SCT LOW/MED CLOUDS WITH EMBDD ISOL

WK CONVTN OVER EC ARSEA (.)

BAY OF BENGAL & ANDAMAN SEA:-

SCT LOW/MED CLOUDS WITH EMBDD INT TO V INT CONVTN OVER ANDAMAN SEA AND MOD TO INT CONVTN OVER SOUTH BAY (.)

CLOUDS DESCRIPTION OUTSIDE INDIA:-



SCT LOW/MED CLOUDS WITH EMBDD MOD TO INT CONVTN OVER SRI LANKA GULF OF MANNAR PALK STR NEPAL BHUTAN TIBET CHINA E CHINA SEA TAIWAN MYANMAR THAILAND GULF OF THAILAND CAMBODIA LAOS VIETNAM HAINAN GULF OF TONKIN SUMATRA STR OF MALACCA MALAYSIA BORNEO S CHINA SEA JAVA ILS & SEA CELEBES ILS & SEA PHILIPPINES SULU SEA N MOZAMBIQUE CHANNEL AND OVER INDIAN OCEAN BET LAT 4.0S TO 28.0S LONG 50.0E TO 70.0E AND BET LAT 5.0N TO 27.0S LONG 70.0E TO 100.0E (.)

TOO 02/2140 HRS IST=

NNNN

LEGEND:-

REGION	NORTH	J&K HP PJB HARY DLH UP UTRKND
	EAST	BHR JHRKND CHTGH OR WB SKM NORTH- EAST STATES
	WEST	RAJ MP GUJ MAHA GOA

	SOUTH	TLNGN AP KRNTK KER TN LKSDP ANDAMAN & NICOBAR ILS
--	--------------	--

CLOUD DISTRIBUTION	ISOL	ISOLATED (LESS THAN 25%)	
	SCT	SCATTERED (25 TO 50%)	
	BKN	BROKEN (51 TO 75%)	
	SLD	SOLID (GREATER THAN 75%)	
CLOUDS TOP TEMPERATURE	CTT	CLOUD TOP TEMPERATURE	
CONVECTION	WK CONVTN	WEAK CONVECTION (CTT GREATER THAN -25°C)	
	MOD CONVTN	MODERATE CONVECTION (CTT BETWEEN -25°C TO -40°C)	
	INT CONVTN	INTENSE CONVECTION (CTT BETWEEN -41°C TO -70°C)	
	V INT CONVTN	VERY INTENSE CONVECTION (CTT LESS THAN -70°C)	
METEOROLOGICAL SUB-DIVISIONS, STATES & UNION TERRITORIES	ARUPR	ARUNACHAL PRADESH	
	BHR	BIHAR	
	CHTGH	CHHATTISGARH	
	COTL AP	COASTAL ANDHRA PRADESH	
	COTL KRNTK	COASTAL KARNATAKA	
	COTL ORS	COASTAL ORISSA	
	GUJ	GUJARAT	
	GWB	GANGETIC WEST BENGAL	
	HARY	HARYANA	
	DLH	DELHI	
	HP	HIMACHAL PRADESH	
	J&K	JAMMU AND KASHMIR	
	JHRKND	JHARKHAND	
	KER	KERALA	
	KKN	KONKAN	
	LKSDP	LAKSHADWEEP	
	M MAHA	MADHYA MAHARASHTRA	
	MAHA	MAHARASHTRA	
	MANI	MANIPUR	
	MEGHA	MEGHALAYA	
	MIZO	MIZORAM	
	MP	MADHYA PRADESH	
		MRTHWD	MARATHWADA
		NAGA	NAGALAND
N COTL AP		NORTH COASTAL ANDHRA PRADESH	
NIK		NORTH INTERIOR KARNATAKA	
ORS		ORISSA	
PJB		PUNJAB	
RAJ		RAJASTHAN	
RYLSM		RAYALASEEMA	
SAU & KUTCH		SAURASHTRA & KUTCH	
SHWB		SUB-HIMALAYAN WEST BENGAL	

	SIK	SOUTH INTERIOR KARNATAKA
	SKM	SIKKIM
	TLNGN	TELANGANA
	TN	TAMIL NADU
	TRP	TRIPURA
	UP	UTTAR PRADESH
	UTRKND	UTTARAKHAND
	VID	VIDHARBHA
	SHWB	SUB HIMALAYAN WEST BENGAL
	GWB	GANGETIC WEST BENGAL
	ARSEA	ARABIAN SEA
	ILS	ISLANDS
MISCELLANEOUS	ASSW	IN ASSOCIATION WITH
	ASSTD	ASSOCIATED
	LLC	LOW LEVEL CIRCULATION
	EMBDD	EMBEDDED
	N/HOOD	NEIGHBOURHOOD
	EXT	EXTREME