

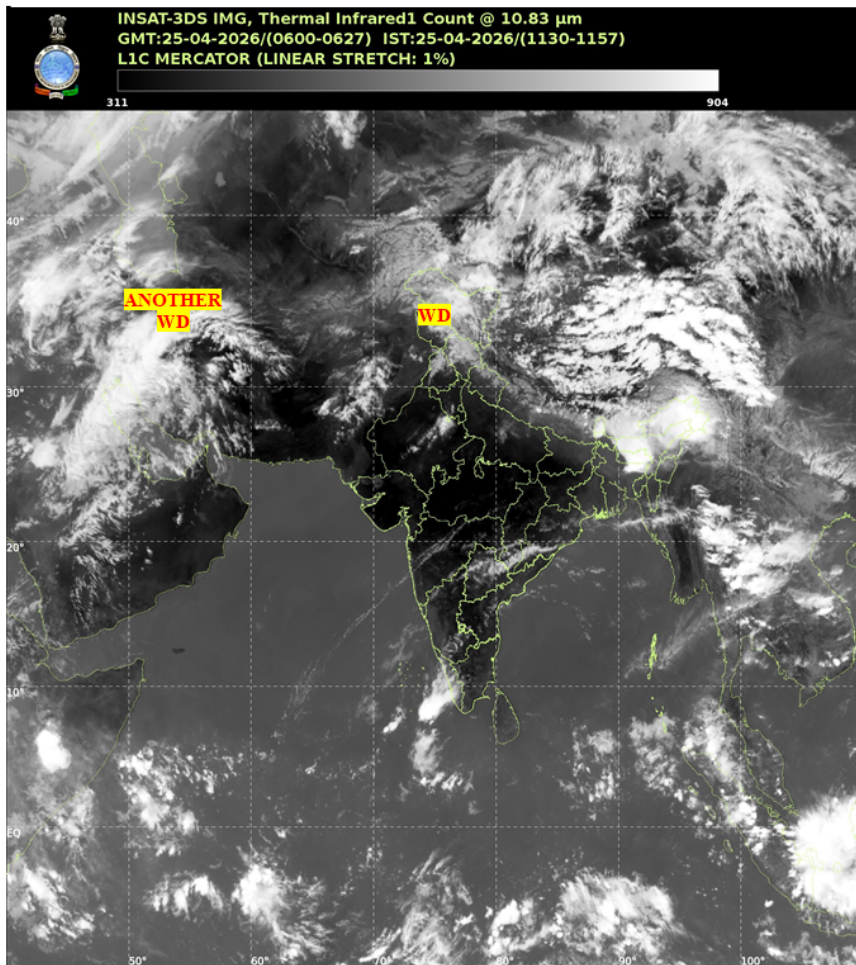


भारत मौसम विज्ञान विभाग
पृथ्वी विज्ञान मंत्रालय
India Meteorological Department
Ministry of Earth Sciences



SATELLITE BULLETIN BASED ON SATELLITE IMAGERIES AND PRODUCTS

Date: 2026-04-25 Time: 06:00:00 UTC



TCIN50 DEMS 250600

SATELLITE BULLETIN BASED ON INSAT-3DS PIC OF 250600 UTC (.)

REGION COVERED BETWEEN LAT 50.0°N TO 35.0°S AND LONG 40.0°E TO 125.0°E (.)

SALIENT FEATURES:

WESTERN DISTURBANCE (WD):-

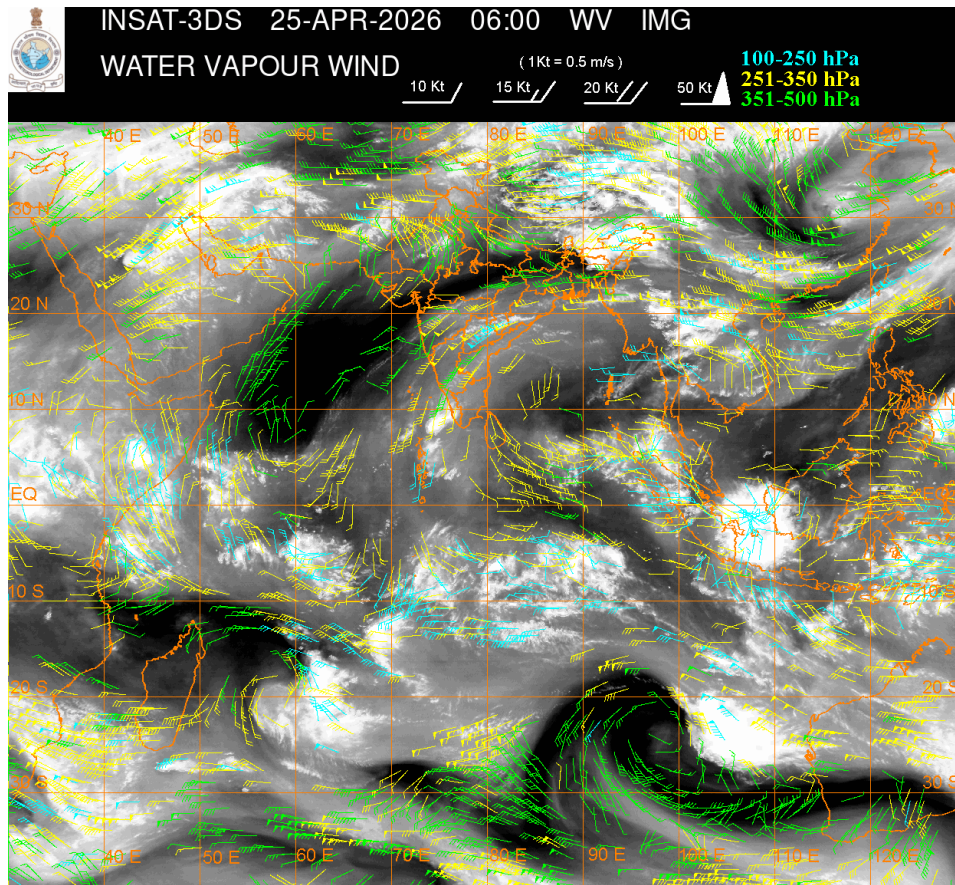
SCT MULTILAYERED CLOUDS OVER PAK LADAKH J&K PJB RAJ HP UTRKND TIBET ADJ CHINA IN ASSW WD OVER THE AREA (.)

SCT MULTILAYERED CLOUDS OVER PERSIAN GULF IRAN AFGAN AND N/HOOD IN ASSW ANOTHER WD OVER THE AREA (.)

CONVECTIVE / THUNDERSTORM ACTIVITY:-

INTENSE TO VERY INTENSE CONVECTIVE/THUNDERSTORM ACTIVITY OVER SKM SHWB ASSAM ARUPR MEGHA (MINIMUM CTT 70-90 DEG CEL) (.)

MODERATE TO INTENSE CONVECTIVE/THUNDERSTORM ACTIVITY OVER LADAKH J&K N RAJ S KER (MINIMUM CTT 40-70 DEG CEL) (.)



CLOUD DESCRIPTION WITHIN INDIA:

NORTH:

SCT LOW/MED CLOUDS WITH EMBDD MOD TO INT CONVTN OVER LADAKH J&K (.) ISOL TO SCT LOW/MED CLOUDS WITH EMBDD WK TO MOD CONVTN OVER HP UTRKND PJB HARY DLH UP (.)

EAST:

SCT LOW/MED CLOUDS WITH EMBDD INT TO V INT CONVTN OVER SKM N SHWB ASSAM ARPUR MEGHA (.) SCT LOW/MED CLOUDS OVER CHTGH S SHWB ORS GWB REST NE STATES & BD (.)

WEST:

ISOL LOW/MED CLOUDS WITH EMBDD MOD TO INT CONVTN OVER NW RAJ AND WK TO MOD CONVTN OVER MAHA (.) ISOL LOW/MED CLOUDS OVER REST RAJ MP GOA (.)

SOUTH:

SCT LOW/MED CLOUDS WITH EMBDD MOD TO INT CONVTN OVER S KER AND WK TO MOD CONVTN OVER KRNTK N KER TN LKSDP ILS AREA (.) SCT LOW/MED CLOUDS OVER TLNGN RYLISM ANDAMAN & NICOBAR ILS AREA (.)

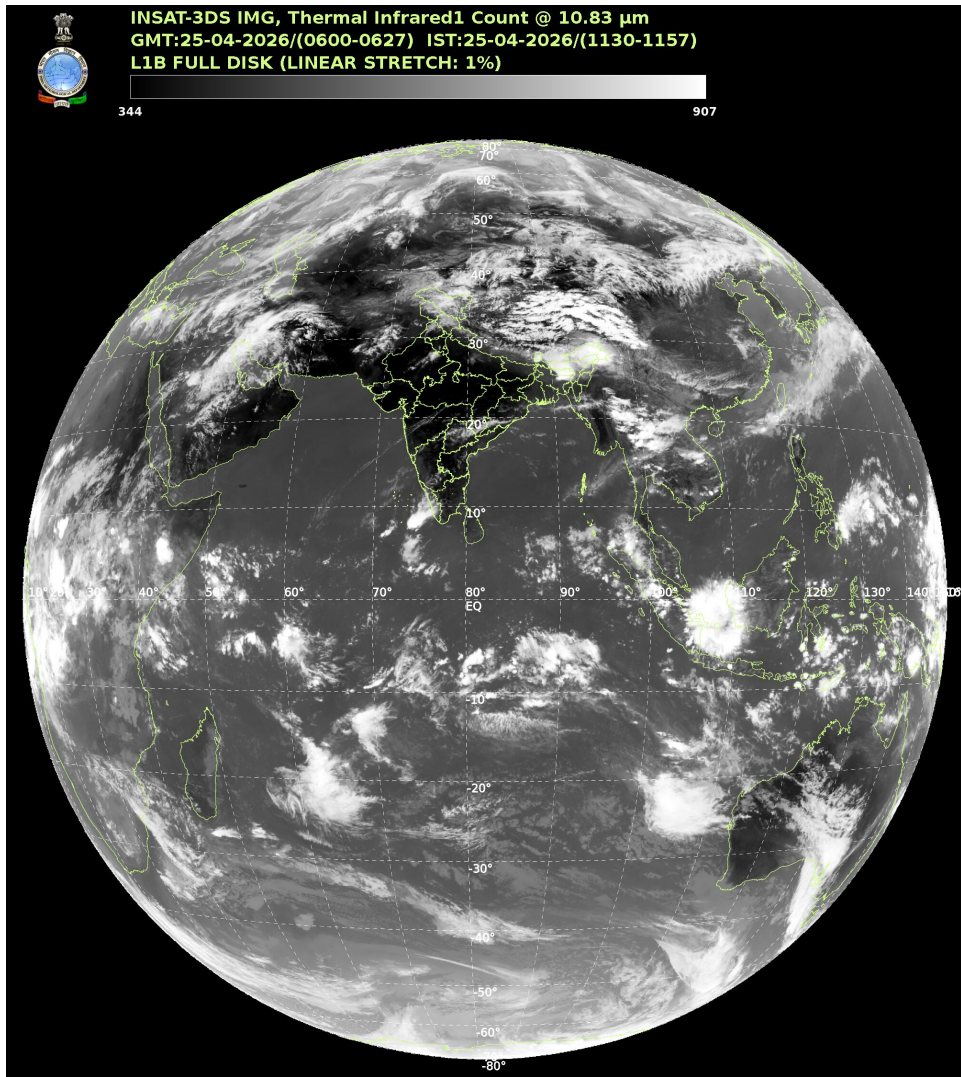
ARABIAN SEA:

SCT LOW/MED CLOUDS WITH EMBDD ISOL MOD TO INT CONVTN OVER SOUTH EAST ARSEA MALDIVES AND COMORIN AREA (.)

BAY OF BENGAL & ANDAMAN SEA:

SCT LOW/MED CLOUDS WITH EMBDD ISOL MOD TO INT CONVTN OVER SOUTH BAY SOUTH OF LAT 8N AND SOUTH ANDAMAN SEA (.)

CLOUD DESCRIPTION OUTSIDE INDIA:



SCT LOW/MED CLOUDS WITH EMBDD MOD TO INT CONVTN OVER SRI LANKA PALK STR GULF OF MANNAR MALDIVES AREA PAK BHUTAN TIBET CHINA EAST CHINA SEA TAIWAN MYANMAR THAILAND CAMBODIA LAOS VIETNAM GULF OF TONKIN HAINAN SUMATRA STR OF MALACCA MALAYSIA BORNEO SOUTH CHINA SEA JAVA ILS & SEA CELEBES ILS & SEA PHILIPPINES MOZAMBIQUE CHANNEL AND OVER INDIAN OCEAN BET LAT 5.0N TO 30.0S LONG 40.0E TO 120.0E (.)

T00 25/1220 HRS IST

NNNN

LEGEND

REGION	
NORTH	J&K HP UTRKND PJB HARY DLH UP
EAST	BHR JHRKND CHTGH ORS WB SKM NORTH-EAST STATES
WEST	RAJ MP GUJ MAHA GOA
SOUTH	TLNGN AP KRNTK KER TN LKSDP ANDAMAN & NICOBAR ILS
CLOUD DISTRIBUTION	

ISOL	ISOLATED (LESS THAN 25%)
SCT	SCATTERED (25 TO 50%)
BKN	BROKEN (51 TO 75%)
SLD	SOLID (GREATER THAN 75%)
CLOUDS TOP TEMPERATURE	
CTT	CLOUD TOP TEMPERATURE
CONVECTION	
WK CONVTN	WEAK CONVECTION (CTT GREATER THAN -25°C)
MOD CONVTN	MODERATE CONVECTION (CTT BETWEEN -25°C TO -40°C)
INT CONVTN	INTENSE CONVECTION (CTT BETWEEN -41°C TO -70°C)
V INT CONVTN	VERY INTENSE CONVECTION (CTT LESS THAN -70°C)
METEOROLOGICAL SUB-DIVISIONS, STATES & UNION TERRITORIES	
J&K	JAMMU AND KASHMIR
HP	HIMACHAL PRADESH
UTRKND	UTTARAKHAND
PJB	PUNJAB
HARY	HARYANA
DLH	DELHI
BHR	BIHAR
JHRKND	JHARKHAND
CHTGH	CHHATTISGARH
ORS	ORISSA
GWB	GANGETIC WEST BENGAL
SHWB	SUB-HIMALAYAN WEST BENGAL
SKM	SIKKIM
ARUPR	ARUNACHAL PRADESH
ASSAM	ASSAM
MEGHA	MEGHALAYA
MANI	MANIPUR
MIZO	MIZORAM
TRP	TRIPURA
RAJ	RAJASTHAN
MP	MADHYA PRADESH
GUJ	GUJARAT

SAU & KUTCH	SAURASHTRA & KUTCH
MAHA	MAHARASHTRA
M MAHA	MADHYA MAHARASHTRA
MRTHWD	MARATHWADA
VID	VIDARBHA
KKN	KONKAN
TLNGN	TELANGANA
RYLSM	RAYALSEEMA
COTL AP	COASTAL ANDHRA PRADESH
NIK	NORTH INTERIOR KARNATAKA
SIK	SOUTH INTERIOR KARNATAKA
COTL KRNTK	COASTAL KARNATAKA
KER	KERALA
TN	TAMILNADU
LKSDP	LAKSHADWEEP
ILS	ISLANDS
ARSEA	ARABIAN SEA
MISCELLANEOUS	
ASSW	IN ASSOCIATION WITH
ASSTD	ASSOCIATED
LLC	LOW LEVEL CIRCULATION
EMBDD	EMBEDDED
N/HOOD	NEIGHBOURHOOD
EXT	EXTREME