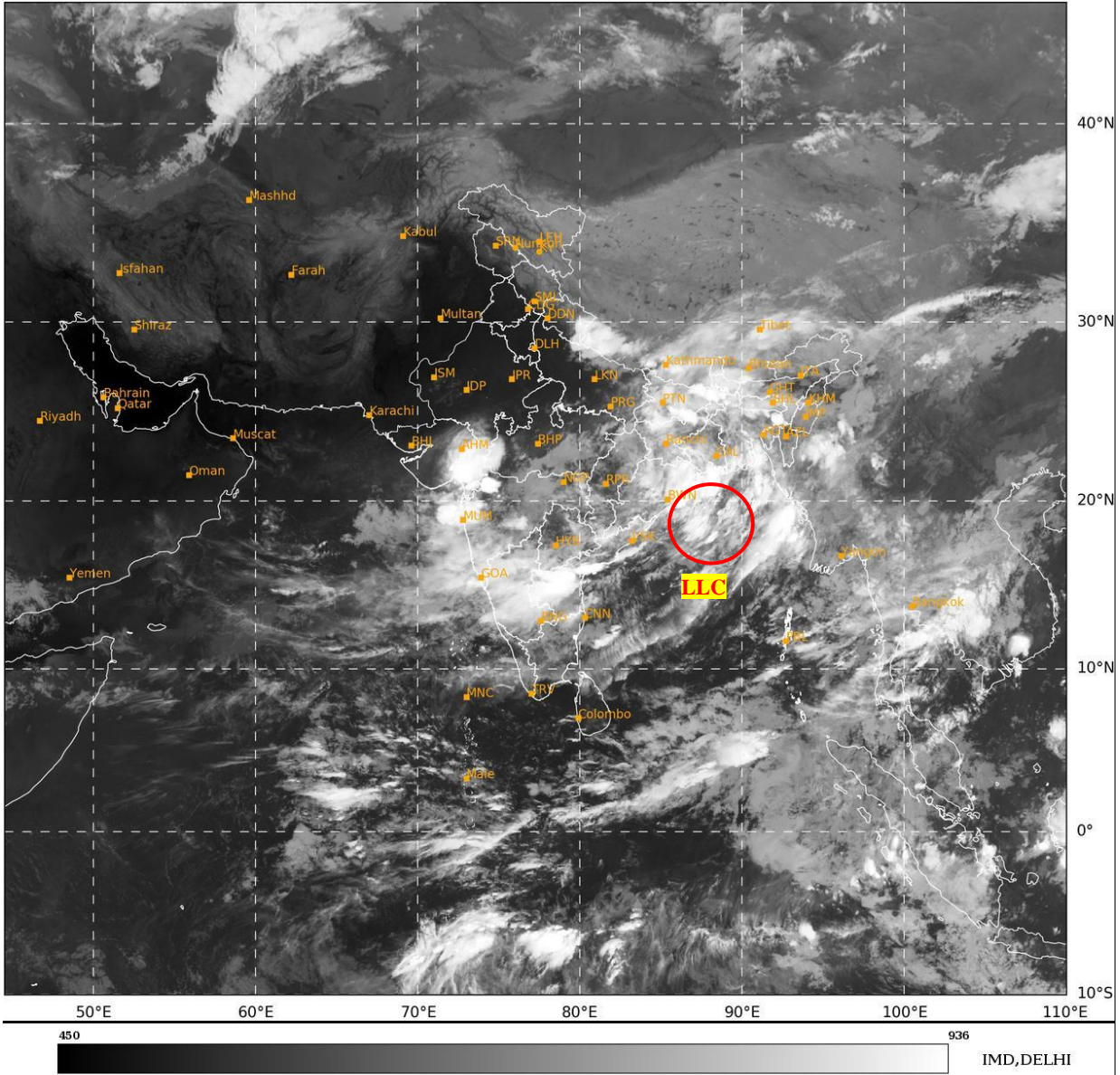




**SATELLITE BULLETIN BASED ON SATELLITE  
IMAGERIES AND PRODUCTS**  
**24.09.2024 TIME 2100 UTC**

SAT : INSAT-3DR IMG  
IMG\_TIR1 10.8 um  
LIC Mercator

24-09-2024/(2115 to 2142) GMT  
25-09-2024/(0245 to 0312) IST



TCIN50 DEMS 242100

SATELLITE BULLETIN BASED ON INSAT-3DR PIC OF 242115 UTC (.)

REGION COVERED BETWEEN LAT 50.0°N TO 35.0°S AND LONG 40.0°E TO 125.0°E (.)

**SALIENT FEATURES:-**

**LLC OVER NORTH-WEST ADJ WEST-CENTRAL BAY OFF SOUTH ODISHA-NORTH ANDHRA PRADESH COASTS:-**

LOW LEVEL CIRCULATION (LLC) OVER NW ADJ WC BAY OFF S ORS-N AP COASTS (.) ASSTD SCT TO BKN LOW/MED CLOUDS WITH EMBDD INT TO V INT CONVTN OVER GWB ORS COTL AP NW & WC BAY (MINIMUM CTT MINUS 75-93 DEG CEL) (.)

**CONVECTIVE / THUNDERSTORM ACTIVITY:-**

N JHRKND N ORS S GWB NORTH SHWB NORTH MADHYA MAHA E GUJ S COTL AP RYLSM (MINIMUM CTT MINUS 70-93 DEG CEL) (.)

MODERATE TO INTENSE CONVECTIVE / THUNDERSTORM ACTIVITY OBSERVED OVER E UTRKND EXT N UP S CHTGH S ORS N GWB SOUTH SKM ASSAM MEGHA SW MP KKN GOA OVER KRNTK S TLNGN N COTL AP (MINIMUM CTT MINUS 50-70 DEG CEL) (.)

**CLOUDS DESCRIPTION WITHIN INDIA:-**

**NORTH:-**

SCT LOW/MED CLOUDS WITH EMBDD MOD TO INT CONVTN OVER E UTRKND EXT N UP (.)  
SCT LOW/MED CLOUDS WITH EMBDD WK CONVTN OVER LADAKH N HP E UP (.) ISOL  
LOW/MED CLOUDS OVER J&K S HP W UTRKND W UP (.)

**EAST:-**

SCT TO BKN LOW/MED CLOUDS WITH EMBDD INT TO V INT CONVTN OVER BHR N JHRKND  
N ORS S GWB NORTH SHWB (.) SCT LOW/MED CLOUDS WITH EMBDD MOD TO INT CONVTN  
OVER S CHTGH S ORS N GWB SOUTH SKM ASSAM MEGHA AND WK TO MOD CONVTN OVER  
N CHTGH NAGA MANI MIZO TRP (.)

**WEST:-**

SCT TO BKN LOW/MED CLOUDS WITH EMBDD INT TO V INT CONVTN NORTH MADHYA  
MAHA E GUJ (.) SCT LOW/MED CLOUDS WITH EMBDD MOD TO INT CONVTN OVER SW MP  
KKN GOA AND WK TO MOD CONVTN OVER E MP REST MAHA EXT S RAJ (.) SCT LOW/MED  
CLOUDS OVER REST RAJ NW MP W GUJ (.)

**SOUTH:-**

SCT TO BKN LOW/MED CLOUDS WITH EMBDD INT TO V INT CONVTN OVER RYLSM S COTL  
AP (.) SCT LOW/MED CLOUDS WITH EMBDD MOD TO INT CONVTN OVER KRNTK S TLNGN N  
COTL AP AND WK TO MOD CONVTN OVER N TLNGN KER TN LKSDP ILS ANDAMAN NICOBAR  
ILS (.)

**ARABIAN SEA:-**

SCT LOW/MED CLOUDS WITH EMBDD INT TO V INT CONVTN OVER GULF OF CAMBAY  
(MINIMUM **CTT MINUS 80-90 DEG CEL**) (.) SCT LOW/MED CLOUDS WITH EMBDD MOD TO INT  
CONVTN OVER EC ARSEA (.) SCT LOW/MED CLOUDS WITH EMBDD ISOL WK TO MOD  
CONVTN OVER WC & SOUTH ARSEA LKSDP ILS AREA & COMORIN AREA (.)

**BAY OF BENGAL & ANDAMAN SEA:-**

SCT LOW/MED CLOUDS WITH EMBDD INT TO V INT CONVTN OVER NORTH AND CENTRAL  
BAY (MINIMUM **CTT MINUS 75-90 DEG CEL**) (.) SCT LOW/MED CLOUDS WITH EMBDD MOD TO  
INT CONVTN OVER SOUTH BAY ANDAMAN SEA & ARAKAN COAST GULF OF MARTABAN &  
TENASSERIM COAST (.)

**CLOUDS DESCRIPTION OUTSIDE INDIA:-**

SCT LOW/MED CLOUDS WITH EMBDD MOD TO INT CONVTN OVER MALDIVES NEPAL  
BHUTAN TIBET CHINA YELLOW SEA EAST CHINA SEA TAIWAN MYANMAR THAILAND  
GULF OF THAILAND CAMBODIA LAOS VIETNAM GULF OF TONKIN HAINAN SUMATRA STR  
OF MALACCA MALAYSIA BORNEO SOUTH CHINA SEA JAVA ILS & SEA CELEBES ILS & SEA  
PHILIPPINES SULU SEA AND OVER INDIAN OCEAN BET LAT 5.0N TO 13.0S LONG 60.0E TO  
110.0E (.)

TOO 25/0550 HRS IST=

NNNN

**LEGEND:-**

|        |       |   |
|--------|-------|---|
| REGION | NORTH | J&K HP PJB HARY DLH UP UTRKND                     |
|        | EAST  | BHR JHRKND CHTGH ORS WB<br>SKM NORTH- EAST STATES |

|   |                        |  |
|---|------------------------|--|
|   | <b>WEST</b>            | <b>RAJ MP GUJ MAHA GOA</b>                                       |
|   | <b>SOUTH</b>           | <b>TLNGN AP KRNTK KER TN LKSDP<br/>ANDAMAN &amp; NICOBAR ILS</b> |
| <b>CLOUD DISTRIBUTION</b>   | <b>ISOL</b>            | <b>ISOLATED (LESS THAN 25%)</b>                                  |
|   | <b>SCT</b>             | <b>SCATTERED (25 TO 50%)</b>                                     |
|   | <b>BKN</b>             | <b>BROKEN (51 TO 75%)</b>  |
|   | <b>SLD</b>             | <b>SOLID (GREATER THAN 75%)</b>                                  |
| <b>CLOUDS TOP TEMPERATURE</b>   | <b>CTT</b>             | <b>CLOUD TOP TEMPERATURE</b>                                     |
| <b>CONVECTION</b>   | <b>WK CONVTN</b>       | <b>WEAK CONVECTION<br/>(CTT GREATER THAN -25°C)</b>              |
|   | <b>MOD CONVTN</b>      | <b>MODERATE CONVECTION<br/>(CTT BETWEEN -25°C TO -40°C)</b>      |
|   | <b>INT CONVTN</b>      | <b>INTENSE CONVECTION<br/>(CTT BETWEEN -41°C TO -70°C)</b>       |
|   | <b>V INT CONVTN</b>    | <b>VERY INTENSE CONVECTION<br/>(CTT LESS THAN -70°C)</b>         |
| <b>METEOROLOGICAL<br/>SUB- DIVISIONS,<br/>STATES &amp; UNION<br/>TERITORIES</b> | <b>ARUPR</b>           | <b>ARUNACHAL PRADESH</b>   |
|   | <b>BHR</b>             | <b>BIHAR</b>   |
|   | <b>CHTGH</b>           | <b>CHHATTISGARH</b>  |
|   | <b>COTL AP</b>         | <b>COASTAL ANDHRA PRADESH</b>                                    |
|   | <b>COTL KRNTK</b>      | <b>COASTAL KARNATAKA</b>   |
|   | <b>COTL ORS</b>        | <b>COASTAL ORISSA</b>  |
|   | <b>GUJ</b>             | <b>GUJARAT</b>   |
|   | <b>GWB</b>             | <b>GANGETIC WEST BENGAL</b>                                      |
|   | <b>HARY</b>            | <b>HARYANA</b>   |
|   | <b>DLH</b>             | <b>DELHI</b>   |
|   | <b>HP</b>              | <b>HIMACHAL PRADESH</b>  |
|   | <b>J&amp;K</b>         | <b>JAMMU AND KASHMIR</b>   |
|   | <b>JHRKND</b>          | <b>JHARKHAND</b>   |
|   | <b>KER</b>             | <b>KERALA</b>  |
|   | <b>KKN</b>             | <b>KONKAN</b>  |
|   | <b>LKSDP</b>           | <b>LAKSHADWEEP</b>   |
|   | <b>M MAHA</b>          | <b>MADHYA MAHARASHTRA</b>  |
|   | <b>MAHA</b>            | <b>MAHARASHTRA</b>   |
|   | <b>MANI</b>            | <b>MANIPUR</b>   |
|   | <b>MEGHA</b>           | <b>MEGHALAYA</b>   |
| <b>MIZO</b>   | <b>MIZORAM</b>         |  |
| <b>MP</b>   | <b>MADHYA PRADESH</b>  |  |
|   | <b>MRTHWD</b>          | <b>MARATHWADA</b>  |
|   | <b>NAGA</b>            | <b>NAGALAND</b>  |
|   | <b>N COTL AP</b>       | <b>NORTH COASTAL ANDHRA<br/>PRADESH</b>                          |
|   | <b>NIK</b>             | <b>NORTH INTERIOR KARNATAKA</b>                                  |
|   | <b>ORS</b>             | <b>ORISSA</b>  |
|   | <b>PJB</b>             | <b>PUNJAB</b>  |
|   | <b>RAJ</b>             | <b>RAJASTHAN</b>   |
|   | <b>RYLSM</b>           | <b>RAYALASEEMA</b>   |
|   | <b>SAU &amp; KUTCH</b> | <b>SAURASHTRA &amp; KUTCH</b>                                    |

|                      |               |                                  |
|----------------------|---------------|----------------------------------|
|                      | <b>SHWB</b>   | <b>SUB-HIMALAYAN WEST BENGAL</b> |
|                      | <b>SIK</b>    | <b>SOUTH INTERIOR KARNATAKA</b>  |
|                      | <b>SKM</b>    | <b>SIKKIM</b>                    |
|                      | <b>TLNGN</b>  | <b>TELANGANA</b>                 |
|                      | <b>TN</b>     | <b>TAMIL NADU</b>                |
|                      | <b>TRP</b>    | <b>TRIPURA</b>                   |
|                      | <b>UP</b>     | <b>UTTAR PRADESH</b>             |
|                      | <b>UTRKND</b> | <b>UTTARAKHAND</b>               |
|                      | <b>VID</b>    | <b>VIDHARBHA</b>                 |
|                      | <b>SHWB</b>   | <b>SUB HIMALAYAN WEST BENGAL</b> |
|                      | <b>GWB</b>    | <b>GANGETIC WEST BENGAL</b>      |
|                      | <b>ARSEA</b>  | <b>ARABIAN SEA</b>               |
|                      | <b>ILS</b>    | <b>ISLANDS</b>                   |
| <b>MISCELLANEOUS</b> | <b>ASSW</b>   | <b>IN ASSOCIATION WITH</b>       |
|                      | <b>ASSTD</b>  | <b>ASSOCIATED</b>                |
|                      | <b>LLC</b>    | <b>LOW LEVEL CIRCULATION</b>     |
|                      | <b>EMBDD</b>  | <b>EMBEDDED</b>                  |
|                      | <b>N/HOOD</b> | <b>NEIGHBOURHOOD</b>             |
|                      | <b>EXT</b>    | <b>EXTREME</b>                   |