



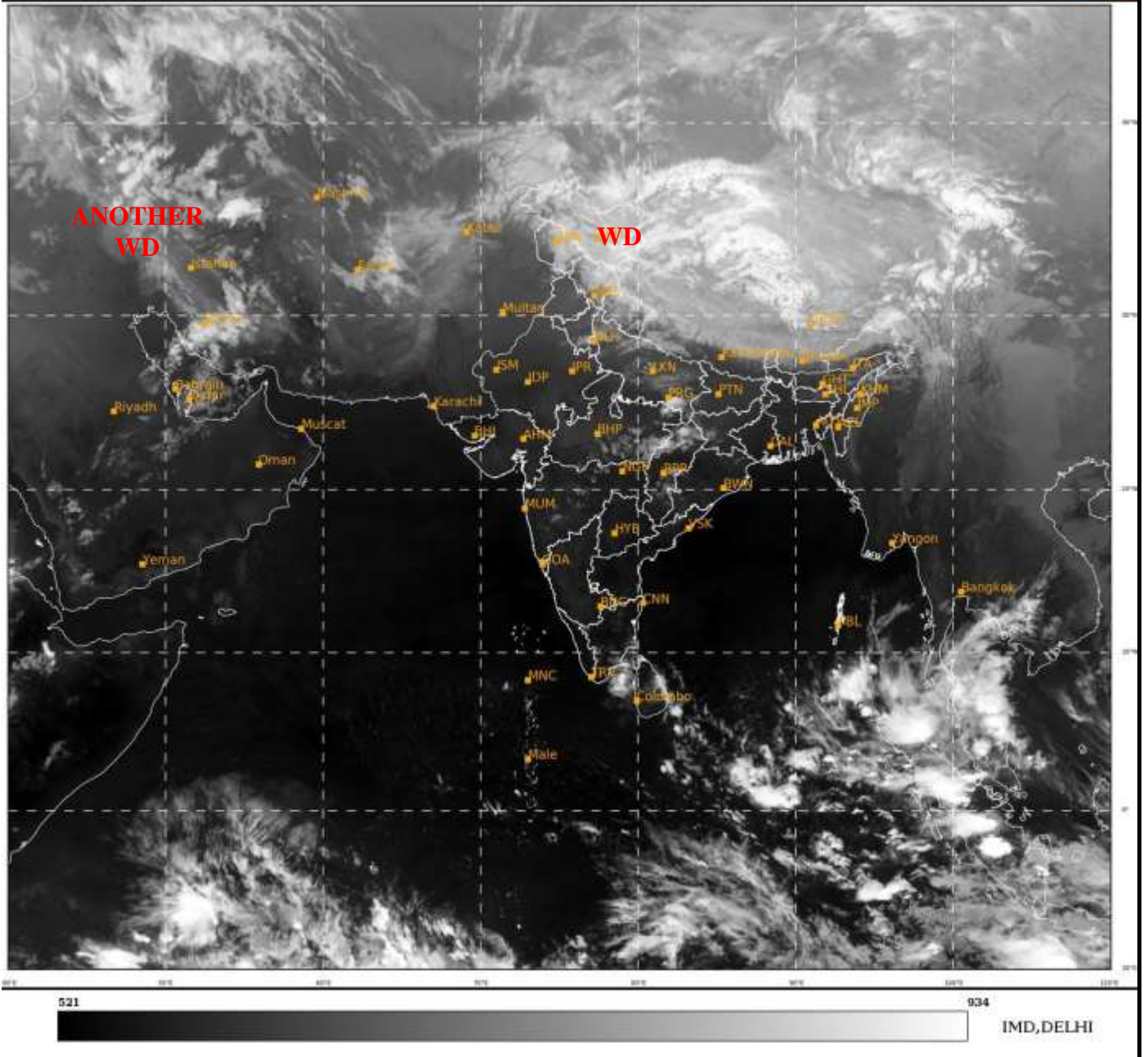
भारत मौसम विज्ञान विभाग
पृथ्वी विज्ञान मंत्रालय
India Meteorological Department
Ministry of Earth Sciences



**SATELLITE BULLETIN BASED ON SATELLITE
IMAGERIES AND PRODUCTS**
26.02.2022 TIME 1800 UTC

SAT : INSAT-3D IMG
IMG_TIR1 10.8 um
LIC Mercator

26-02-2022/(1630 to 1656) GMT
26-02-2022/(2200 to 2226) IST



TCIN50 DEMS 261800

SATELLITE BULLETIN BASED ON INSAT-3D PIC OF 261630 UTC (.)

REGION COVERED BETWEEN LAT 50.0°N TO 30.0°S AND LONG 40.0°E TO 125.0°E (.)

SALIENT FEATURES:-

WESTERN DISTURBANCE (WD):-

SCT MULTILAYERED CLOUDS OVER LADAKH J&K HP UTRKND TIBET ADJ CHINA IN ASSW **WD** OVER THE AREA (.)

SCT MULTILAYERED CLOUDS OVER CASPIAN SEA IRAN AND N/HOOD IN ASSW **ANOTHER WD** OVER THE AREA (.)

CONVECTION OVER S ANDAMAN SEA ADJ STRAIT OF MALACCA & N/HOOD:-

INTENSE TO VERY INTENSE CONVTN OVER S ANDAMAN SEA ADJ STR OF MALACCA & N/HOOD PERSISTS (MINIMUM CTT MINUS **90** DEG C) (.) CONVECTION SLIGHTLY INCREASED DURING LAST 06 HRS (.)



INSAT-3D 26-FEB-2022 16:30 WV IMG

WATER VAPOUR WIND

(1Kt = 0.5 m/s)

10 Kt

15 Kt

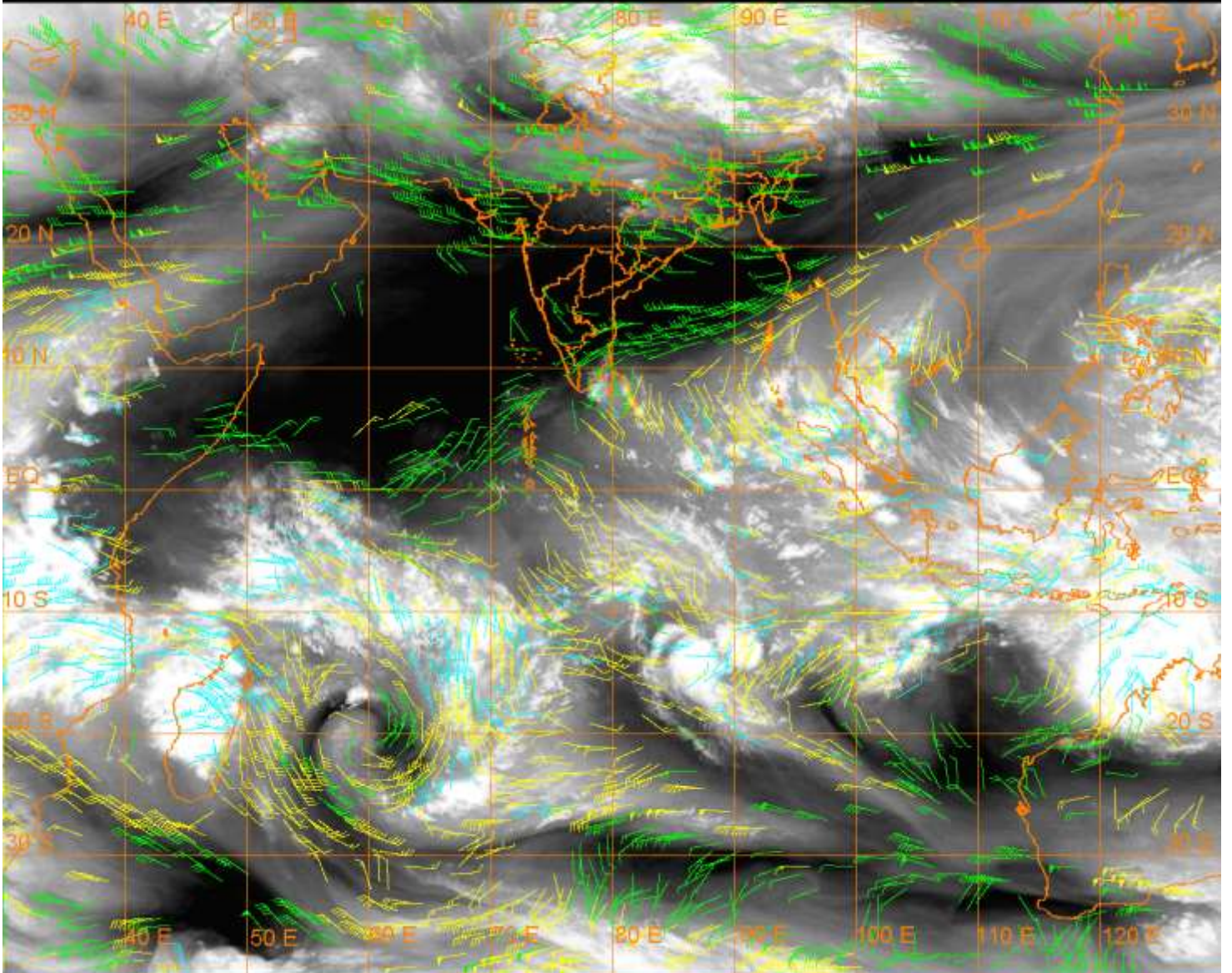
20 Kt

50 Kt

100-250 hPa

251-350 hPa

351-500 hPa



CLOUDS DESCRIPTION WITHIN INDIA:-

NORTH:-

SCT LOW/MED CLOUDS WITH EMBDD MOD TO INT CONVTN OVER LADAKH J&K HP UTRKND (.) SCT LOW/MED CLOUDS WITH EMBDD ISOL WK TO MOD CONVTN OVER S HARY DLH UP (.) SCT LOW/MED CLOUDS OVER PJB N HARY (.)

EAST:-

SCT LOW/MED CLOUDS WITH EMBDD ISOL MOD TO INT CONVTN OVER N CHTGH (.) SCT LOW/MED CLOUDS WITH EMBDD ISOL WK CONVTN OVER SKM ARUPR (.) SCT LOW/MED CLOUDS OVER S CHTGH ORS JHRKND W BHR REST NE STATES (.)

WEST:-

SCT LOW/MED CLOUDS WITH EMBDD ISOL WK TO MOD CONVTN OVER E MP (.) ISOL TO SCT LOW/MED CLOUDS OVER EXT NC RAJ W MP MAHA (.)

SOUTH:-

SCT LOW/MED CLOUDS WITH EMBDD MOD TO INT CONVTN OVER NICOBAR ILS (.) SCT LOW/MED CLOUDS OVER TN & ANDAMAN ILS (.)

ARABIAN SEA:-

NO SIGNIFICANT CLOUDS OVER THE REGION (.)

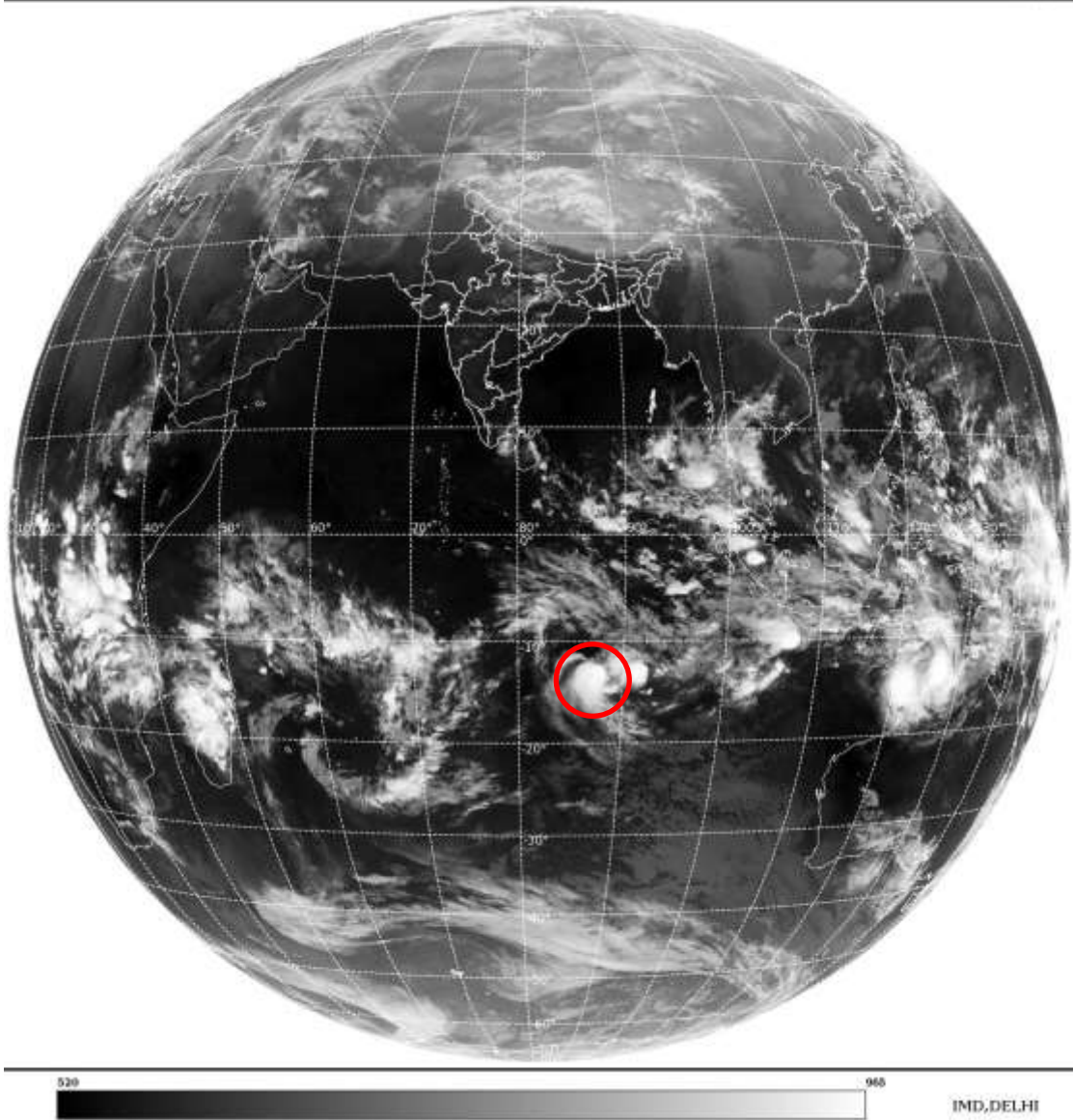
BAY OF BENGAL & ANDAMAN SEA:-

BKN LOW/MED CLOUDS WITH EMBDD INT TO V INT CONVTN OVER S ANDAMAN SEA ADJ STR OF MALACCA (MINIMUM CTT MINUS 90 DEG C) (.) SCT LOW/MED CLOUDS WITH EMBDD ISOL MOD TO INT CONVTN OVER S BAY SOUTH OF LAT 10.0N (.)

CLOUDS DESCRIPTION OUTSIDE INDIA:

SAT : INSAT-3D IMG
Thermal Infrared1 Count 10.8 um
LIB FULL DISK

26-02-2022/(1630 to 1656) GMT
26-02-2022/(2200 to 2226) IST



VORTEX OVER SOUTH INDIAN OCEAN:-

VORTEX (VERNON) OVER SOUTH INDIAN OCEAN CENTERED NEAR 13.4S / 87.4E (.) INTENSITY T5.0/6.0 (.) ASSTD BKN LOW/MED CLOUDS WITH EMBDD INT TO V INT CONVTN OVER AREA BET LAT 13.0S TO 17.0S LONG 86.0E TO 90.0E (.)

SCT LOW/MED CLOUDS WITH EMBDD MOD TO INT CONVTN OVER TIBET ADJ CHINA S THAILAND GULF OF THAILAND CAMBODIA SUMATRA STR OF MALACCA MALAYSIA BORNEO ADJ S CHINA SEA JAVA ILS & SEA CELEBES ILS & SEA PHILIPPINES MADAGASCAR N MOZAMBIQUE CHANNEL AND OVER INDIAN OCEAN BET LAT 2.0S TO 28.0S LONG 50.0E TO 75.0E AND BET LAT 5.0N TO 20.0S LONG 80.0E TO 110.0E (.)

TOO 26/2310 HRS IST=

NNNN

LEGEND:-

REGION	NORTH	J&K HP PJB HARY DLH UP UTRKND
	EAST	BHR JHRKND CHTGH OR WB SKM NORTH- EAST STATES
	WEST	RAJ MP GUJ MAHA GOA
	SOUTH	TLNGN AP KRNTK KER TN LKSDP ANDAMAN & NICOBAR ILS

CLOUD DISTRIBUTION	ISOL	ISOLATED (LESS THAN 25%)	
	SCT	SCATTERED (25 TO 50%)	
	BKN	BROKEN (51 TO 75%)	
	SLD	SOLID (GREATER THAN 75%)	
CLOUDS TOP TEMPERATURE	CTT	CLOUD TOP TEMPERATURE	
CONVECTION	WK CONVTN	WEAK CONVECTION (CTT GREATER THAN -25°C)	
	MOD CONVTN	MODERATE CONVECTION (CTT BETWEEN -25°C TO -40°C)	
	INT CONVTN	INTENSE CONVECTION (CTT BETWEEN -41°C TO -70°C)	
	V INT CONVTN	VERY INTENSE CONVECTION (CTT LESS THAN -70°C)	
METEOROLOGICAL SUB-DIVISIONS, STATES & UNION TERRITORIES	ARUPR	ARUNACHAL PRADESH	
	BHR	BIHAR	
	CHTGH	CHHATTISGARH	
	COTL AP	COASTAL ANDHRA PRADESH	
	COTL KRNTK	COASTAL KARNATAKA	
	COTL ORS	COASTAL ORISSA	
	GUJ	GUJARAT	
	GWB	GANGETIC WEST BENGAL	
	HARY	HARYANA	
	DLH	DELHI	
	HP	HIMACHAL PRADESH	
	J&K	JAMMU AND KASHMIR	
	JHRKND	JHARKHAND	
	KER	KERALA	
	KKN	KONKAN	
	LKSDP	LAKSHADWEEP	
	M MAHA	MADHYA MAHARASHTRA	
	MAHA	MAHARASHTRA	
	MANI	MANIPUR	
	MEGHA	MEGHALAYA	
	MIZO	MIZORAM	
	MP	MADHYA PRADESH	
		MRTHWD	MARATHWADA
		NAGA	NAGALAND
N COTL AP		NORTH COASTAL ANDHRA PRADESH	
NIK		NORTH INTERIOR KARNATAKA	
ORS		ORISSA	
PJB		PUNJAB	
RAJ		RAJASTHAN	
RYLSM		RAYALASEEMA	
SAU & KUTCH		SAURASHTRA & KUTCH	
SHWB		SUB-HIMALAYAN WEST BENGAL	
SIK		SOUTH INTERIOR KARNATAKA	
SKM		SIKKIM	

	TLNGN	TELANGANA
	TN	TAMIL NADU
	TRP	TRIPURA
	UP	UTTAR PRADESH
	UTRKND	UTTARAKHAND
	VID	VIDHARBHA
	SHWB	SUB HIMALAYAN WEST BENGAL
	GWB	GANGETIC WEST BENGAL
	ARSEA	ARABIAN SEA
	ILS	ISLANDS
MISCELLANEOUS	ASSW	IN ASSOCIATION WITH
	ASSTD	ASSOCIATED
	LLC	LOW LEVEL CIRCULATION
	EMBDD	EMBEDDED
	N/HOOD	NEIGHBOURHOOD
	EXT	EXTREME