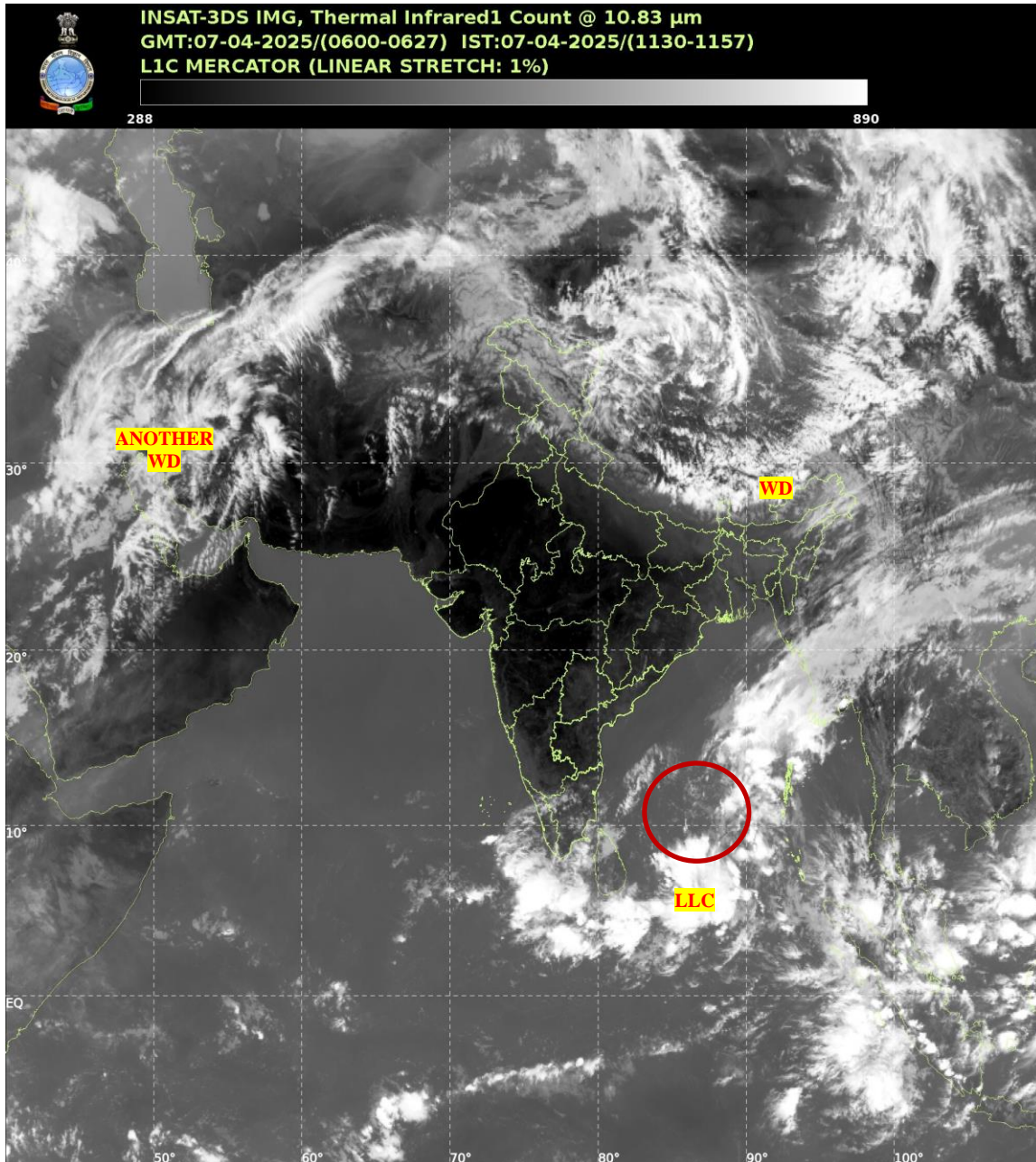




**SATELLITE BULLETIN BASED ON SATELLITE
IMAGERIES AND PRODUCTS**
07.04.2025 TIME 0600 UTC



TCIN50 DEMS 070600

SATELLITE BULLETIN BASED ON INSAT-3DS PIC OF 070600 UTC (.)

REGION COVERED BETWEEN LAT 50.0°N TO 35.0°S AND LONG 40.0°E TO 125.0°E (.)

SALIENT FEATURES:-

LOW LEVEL CIRCULATION OVER CENTRAL PARTS OF SOUTH BAY & N/HOOD:-

LOW LEVEL CIRCULATION (LLC) OVER CENTRAL PARTS OF SOUTH BAY & N/HOOD (.)
ASSTD SCT TO BKN LOW/MED CLOUDS WITH EMBDD MOD TO INT CONVTN OVER BAY BET
LAT 5.0N TO 18.0N AND LONG 80.0E TO 95.0E (MINIMUM CTT MINUS 50-70 DEG CEL) (.)

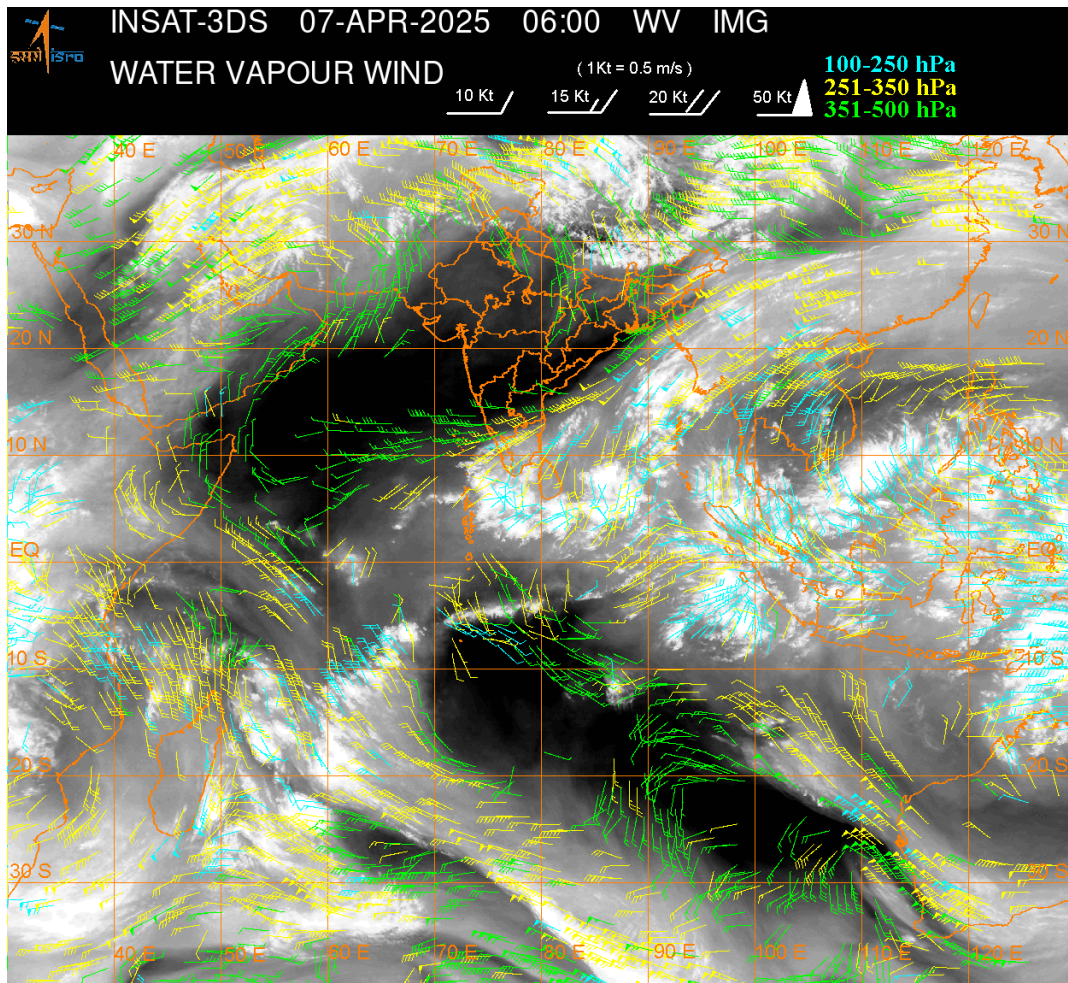
WESTERN DISTURBANCE:-

SCT MULTILAYERED CLOUDS OVER E TIBET ADJ CHINA IN ASSW WD OVER THE AREA (.)

SCT MULTILAYERED CLOUDS OVER PERSIAN GULF IRAN ADJ AFGAN AND N/HOOD IN ASSW
ANOTHER WD OVER THE AREA (.)

CONVECTIVE / THUNDERSTORM ACTIVITY:-

MODERATE TO INTENSE CONVECTIVE / THUNDERSTORM ACTIVITY OBSERVED OVER LADAKH ASSAM TN LKSDP ILS AREA ANDAMAN ILS AREA (MINIMUM CTT MINUS 40-60 DEG CEL) AND CONVECTIVE / THUNDERSTORM ACTIVITY OBSERVED OVER KER TN (MINIMUM CTT MINUS 30-40 DEG CEL) (.)



CLOUDS DESCRIPTION WITHIN INDIA:-

NORTH:-

SCT LOW/MED CLOUDS WITH EMBDD MOD TO INT CONVTN OVER LADAKH S HP AND ISOL WK TO MOD CONVTN OVER J&K N HP N UTRKND (.) ISOL TO SCT LOW/MED CLOUDS OVER S UTRKND SE PJB NE HARY UP (.)

EAST:-

SCT LOW/MED CLOUDS WITH EMBDD MOD TO INT CONVTN OVER ASSAM & BD (.) SCT LOW/MED CLOUDS WITH EMBDD ISOL WK CONVTN OVER ORS S CHTGH N JHRKND SHWB SKM ARUPR (.) ISOL TO SCT LOW/MED CLOUDS OVER C BHR N CHTGH (.)

WEST:-

NO SIGNIFICANT CLOUDS OVER THE REGION (.)

SOUTH:-

SCT LOW/MED CLOUDS WITH EMBDD MOD TO INT CONVTN OVER LKSDP ILS AREA ANDAMAN ILS AREA (.) SCT LOW/MED CLOUDS WITH EMBDD ISOL WK CONVTN OVER N COTL AP KRNTK KER TN NICOBAR ILS (.) ISOL LOW/MED CLOUDS OVER RYLSM S COTL AP (.)

ARABIAN SEA:-

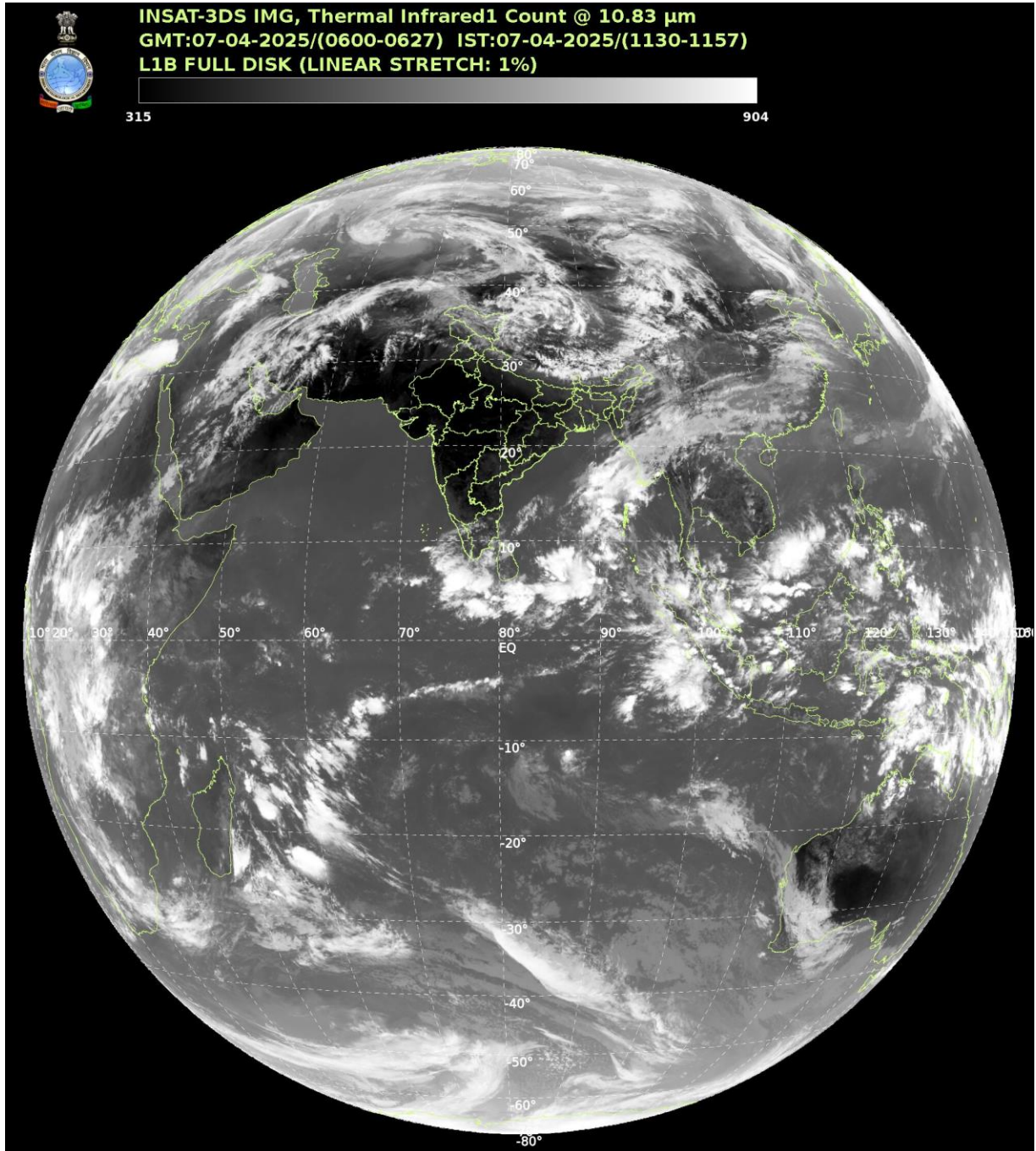
SCT LOW/MED CLOUDS WITH EMBDD MOD TO INT CONVTN OVER SE ARSEA OFF KER COAST LKSDP ILS AREA MALDIVES & COMORIN AREA (.)

BAY OF BENGAL & ANDAMAN SEA:-

SCT TO BKN LOW/MED CLOUDS WITH EMBDD MOD TO INT CONVTN OVER SOUTH BAY EC

BAY NE BAY N ANDAMAN SEA (MINIMUM **CTT MINUS 60-70 DEG CEL**) (.) SCT LOW/MED CLOUDS WITH EMBDD WK TO MOD CONVTN OVER SOUTH ANDAMAN SEA WC BAY (.)

CLOUDS DESCRIPTION OUTSIDE INDIA:-



SCT LOW/MED CLOUDS WITH EMBDD MOD TO INT CONVTN OVER PALK STR GULF OF MANNAR MALDIVES TIBET CHINA MYANMAR THAILAND LAOS VIETNAM GULF OF TONKIN SUMATRA STR OF MALACCA MALAYSIA BORNEO SOUTH CHINA SEA JAVA ILS & SEA CELEBES ILS & SEA PHILIPPINES SULU SEA MADAGASCAR MOZAMBIQUE CHANNEL AND OVER INDIAN OCEAN BET LAT 5.0N TO 20.0S LONG 40.0E TO 110.0E AND BET LAT 20.0S TO 35.0S LONG 40.0E TO 85.0E (.)

TOO 07/1310 EF=

NNNN

LEGEND:-

REGION	NORTH	J&K HP PJB HARY DLH UP UTRKND
	EAST	BHR JHRKND CHTGH ORS WB SKM NORTH- EAST STATES
	WEST	RAJ MP GUJ MAHA GOA
	SOUTH	TLNGN AP KRNTK KER TN LKSDP

		ANDAMAN & NICOBAR ILS
CLOUD DISTRIBUTION	ISOL	ISOLATED (LESS THAN 25%)
	SCT	SCATTERED (25 TO 50%)
	BKN	BROKEN (51 TO 75%)
	SLD	SOLID (GREATER THAN 75%)
CLOUDS TOP TEMPERATURE	CTT	CLOUD TOP TEMPERATURE
CONVECTION	WK CONVTN	WEAK CONVECTION (CTT GREATER THAN -25°C)
	MOD CONVTN	MODERATE CONVECTION (CTT BETWEEN -25°C TO -40°C)
	INT CONVTN	INTENSE CONVECTION (CTT BETWEEN -41°C TO -70°C)
	V INT CONVTN	VERY INTENSE CONVECTION (CTT LESS THAN -70°C)
METEOROLOGICAL SUB- DIVISIONS, STATES & UNION TERRITORIES	ARUPR	ARUNACHAL PRADESH
	BHR	BIHAR
	CHTGH	CHHATTISGARH
	COTL AP	COASTAL ANDHRA PRADESH
	COTL KRNTK	COASTAL KARNATAKA
	COTL ORS	COASTAL ORISSA
	GUJ	GUJARAT
	GWB	GANGETIC WEST BENGAL
	HARY	HARYANA
	DLH	DELHI
	HP	HIMACHAL PRADESH
	J&K	JAMMU AND KASHMIR
	JHRKND	JHARKHAND
	KER	KERALA
	KKN	KONKAN
	LKSDP	LAKSHADWEEP
	M MAHA	MADHYA MAHARASHTRA
	MAHA	MAHARASHTRA
	MANI	MANIPUR
	MEGHA	MEGHALAYA
MIZO	MIZORAM	
MP	MADHYA PRADESH	
	MRTHWD	MARATHWADA
	NAGA	NAGALAND
	N COTL AP	NORTH COASTAL ANDHRA PRADESH
	NIK	NORTH INTERIOR KARNATAKA
	ORS	ORISSA
	PJB	PUNJAB
	RAJ	RAJASTHAN
	RYLSM	RAYALASEEMA
	SAU & KUTCH	SAURASHTRA & KUTCH
	SHWB	SUB-HIMALAYAN WEST BENGAL

	SIK	SOUTH INTERIOR KARNATAKA
	SKM	SIKKIM
	TLNGN	TELANGANA
	TN	TAMIL NADU
	TRP	TRIPURA
	UP	UTTAR PRADESH
	UTRKND	UTTARAKHAND
	VID	VIDHARBHA
	SHWB	SUB HIMALAYAN WEST BENGAL
	GWB	GANGETIC WEST BENGAL
	ARSEA	ARABIAN SEA
	ILS	ISLANDS
MISCELLANEOUS	ASSW	IN ASSOCIATION WITH
	ASSTD	ASSOCIATED
	LLC	LOW LEVEL CIRCULATION
	EMBDD	EMBEDDED
	N/HOOD	NEIGHBOURHOOD
	EXT	EXTREME