



भारत मौसम विज्ञान विभाग
पृथ्वी विज्ञान मंत्रालय
India Meteorological Department
Ministry of Earth Sciences

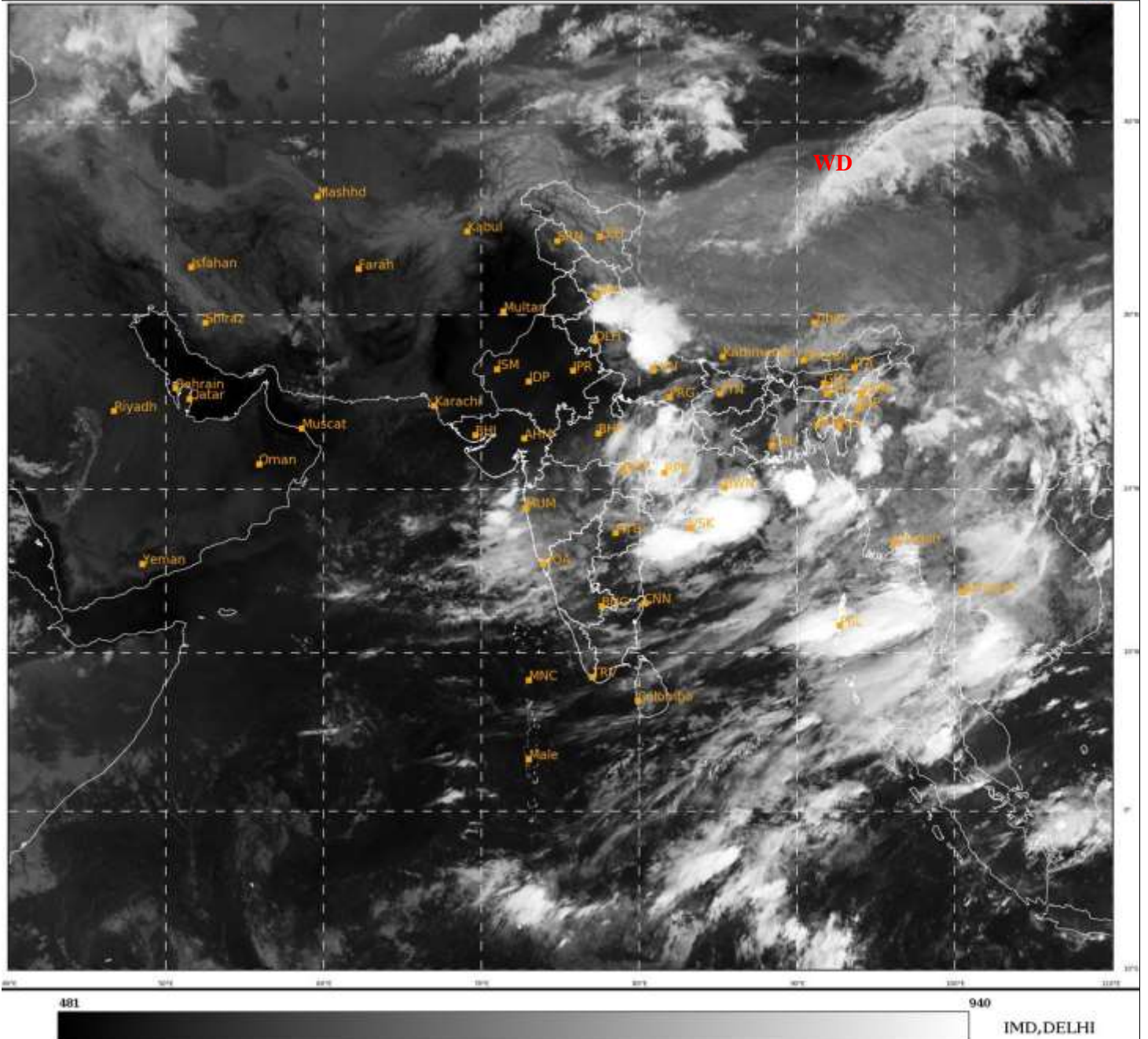


**SATELLITE BULLETIN BASED ON SATELLITE IMAGERIES
AND PRODUCTS**

10.06.2021 TIME 0000 UTC

SAT : INSAT-3D IMG
IMG_TIR1 10.8 um
LIC Mercator

10-06-2021/(0030 to 0057) GMT
10-06-2021/(0600 to 0627) IST



TCIN50 DEMS 100000

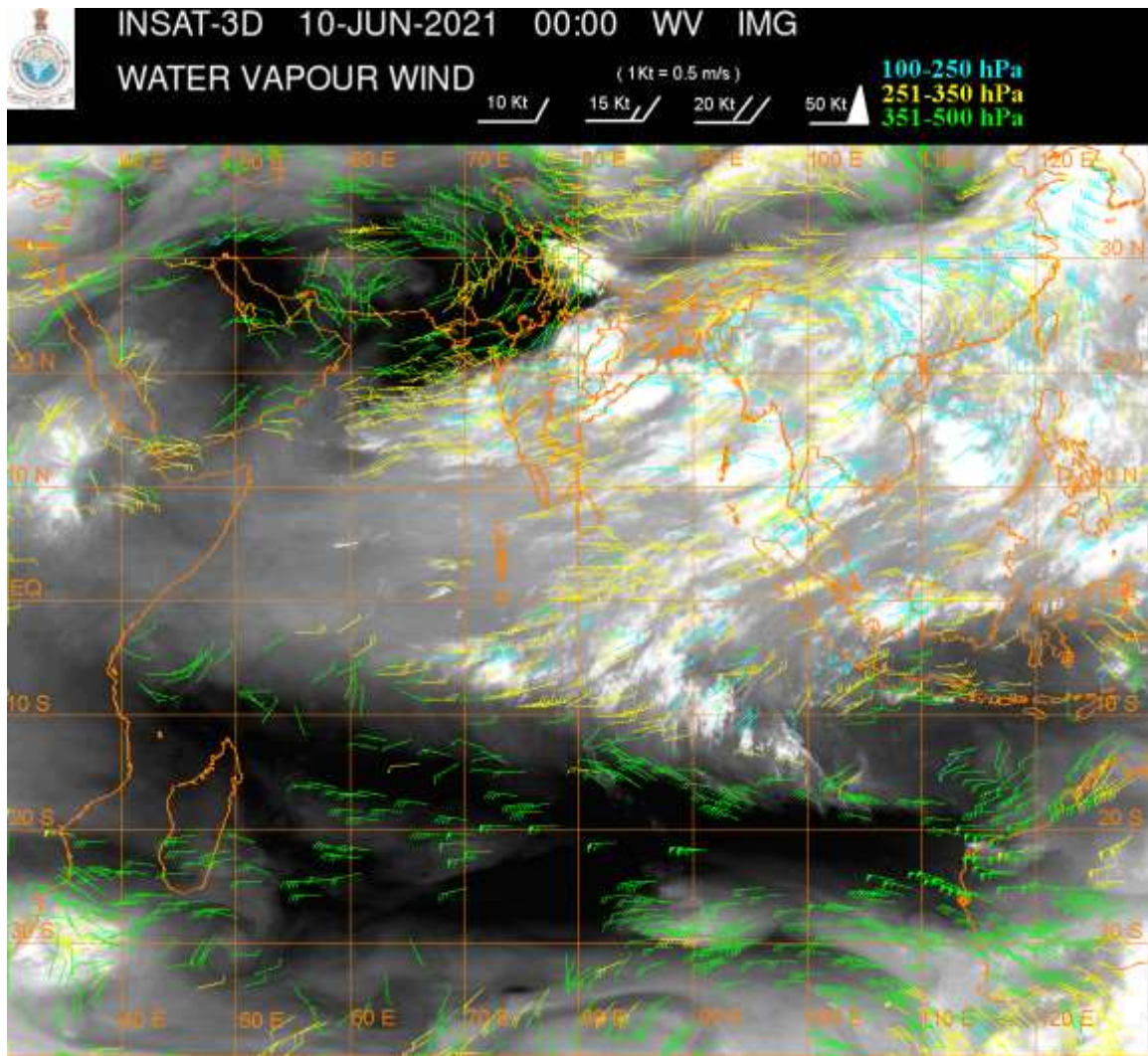
SATELLITE BULLETIN BASED ON INSAT-3D PIC OF 100000 UTC (.)

REGION COVERED BETWEEN LAT 50.0°N TO 30.0°S AND LONG 40.0°E TO 125.0°E (.)

SALIENT FEATURES:-

WESTERN DISTURBANCE (WD):-

SCT MULTILAYERED CLOUDS OVER S HP UTRKND NC UP NEPAL TIBET ADJ CHINA IN ASSW **WD** OVER THE AREA (.)



CLOUDS DESCRIPTION WITHIN INDIA:-

NORTH:-

SCT LOW/MED CLOUDS WITH EMBDD INT TO V INT CONVTN OVER UTRKND (MINIMUM CTT **-75** DEG) EXT N UP (MINIMUM CTT **-87** DEG) (.)SCT LOW/MED CLOUDS WITH EMBDD MOD TO INT CONVTN OVER SE HP EXT N HARY (.) SCT LOW/MED CLOUDS WITH EMBDD ISOL WK TO MOD CONVTN OVER SE UP (.) SCT LOW/MED CLOUDS OVER N HP REST UP (.)

EAST:-

SCT LOW/MED CLOUDS WITH EMBDD INT TO V INT CONVTN OVER C CHTGH N COTL ORS (MINIMUM CTT **-80** DEG) (.) SCT LOW/MED CLOUDS WITH EMBDD MOD TO INT CONVTN OVER N CHTGH S ORS SE ASSAM NAGA W MANI NW MIZO (.) SCT LOW/MED CLOUDS WITH EMBDD WK TO MOD CONVTN OVER S CHTGH N ORS JHRKND W BHR S GWB N SHWB SKM & REST NE STATES (.)

WEST:-

SCT LOW/MED CLOUDS WITH EMBDD INT TO V INT CONVTN OVER EXT NE MP (MINIMUM CTT **-82** DEG) (.) SCT LOW/MED CLOUDS WITH EMBDD MOD TO INT CONVTN OVER SE MP EXT E VID (.) SCT LOW/MED CLOUDS WITH EMBDD WK TO MOD CONVTN OVER REST VID MRTHWD SOUTH MHAH & GOA (.)SCT LOW/MED CLOUDS OVER SW MP NORTH OF M MAHA (.)

SOUTH:-

SCT LOW/MED CLOUDS WITH EMBDD ISOL INT TO V INT CONVTN OVER N COTL AP (MINIMUM CTT **-93** DEG) (.) SCT LOW/MED CLOUDS WITH EMBDD MOD TO INT CONVTN OVER ANDAMAN (.) SCT LOW/MED CLOUDS WITH EMBDD WK TO MOD CONVTN OVER TLNGN NIK COTL KRNTK TN & NICOBAR ILS (.)SCT LOW/MED CLOUDS OVER SIK KER (.)

ARABIAN SEA:-

SCT LOW/MED CLOUDS WITH EMBDD ISOL INT TO V INT CONVTN OVER EC ARSEA OFF MAHA COAST AND MOD TO INT CONVTN OVER REST EC ADJ NE ARSEA (.)

BAY OF BENGAL & ANDAMAN SEA:-

SCT LOW/MED CLOUDS WITH EMBDD INT TO V INT CONVTN OVER N ADJ WC BAY ANDAMAN SEA AND MOD TO INT CONVTN OVER S BAY (.)

CLOUDS DESCRIPTION OUTSIDE INDIA:-

SCT LOW/MED CLOUDS WITH EMBDD MOD TO INT CONVTN OVER SRI LANKA GULF OF MANNAR PALK STR NEPAL BHUTAN TIBET CHINA YELLOW SEA E CHINA SEA TAIWAN HAINAN GULF OF TONKIN MYANMAR THAILAND GULF OF THAILAND CAMBODIA LAOS VIETNAM SUMATRA STR OF MALACCA MALAY PENINSULA BORNEO S CHINA SEA SULU SEA PHILIPPINES AND OVER INDIAN OCEAN BET LAT 5.0N TO 13.5 LONG 68.0E TO 100.0E (.)

TOO 10/0715EF=

NNNN

LEGEND:-

REGION	NORTH	J&K HP PJB HARY DLH UP UTRKND
	EAST	BHR JHRKND CHTGH ORS WB SKMNORTH-EAST STATES
	WEST	RAJ MP GUJ MAHA GOA
	SOUTH	TLNGN AP KRNTK KER TN LKSDP ANDAMAN & NICOBAR ILS

CLOUD DISTRIBUTION	ISOL	ISOLATED (LESS THAN 25%)
	SCT	SCATTERED (25 TO 50%)
	BKN	BROKEN (51 TO 75%)
	SLD	SOLID (GREATER THAN 75%)
CLOUDS TOP TEMPERATURE	CTT	CLOUD TOP TEMPERATURE
CONVECTION	WK CONVTN	WEAK CONVECTION (CTT GREATER THAN -25°C)
	MOD CONVTN	MODERATE CONVECTION (CTT BETWEEN -25°C TO -40°C)
	INT CONVTN	INTENSE CONVECTION (CTT BETWEEN -41°C TO -70°C)
	V INT CONVTN	VERY INTENSE CONVECTION (CTT LESS THAN -70°C)
METEOROLOGICAL SUB-DIVISIONS, STATES & UNION TERRITORIES	ARUPR	ARUNACHAL PRADESH
	BHR	BIHAR
	CHTGH	CHHATTISGARH
	COTL AP	COASTAL ANDHRA PRADESH
	COTL KRNTK	COASTAL KARNATAKA
	COTL ORS	COASTAL ORISSA
	GUJ	GUJARAT
	GWB	GANGETIC WEST BENGAL
	HARY	HARYANA
	DLH	DELHI

	HP	HIMACHAL PRADESH
	J&K	JAMMU AND KASHMIR
	JHRKND	JHARKHAND
	KER	KERALA
	KKN	KONKAN
	LKSDP	LAKSHADWEEP
	M MAHA	MADHYA MAHARASHTRA
	MAHA	MAHARASHTRA
	MANI	MANIPUR
	MEGHA	MEGHALAYA
	MIZO	MIZORAM
	MP	MADHYA PRADESH
	MRTHWD	MARATHWADA
	NAGA	NAGALAND
	N COTL AP	NORTH COASTAL ANDHRA PRADESH
	NIK	NORTH INTERIOR KARNATAKA
	ORS	ORISSA
	PJB	PUNJAB
	RAJ	RAJASTHAN
	RYLSM	RAYALASEEMA
	SAU & KUTCH	SAURASHTRA & KUTCH
	SHWB	SUB-HIMALAYAN WEST BENGAL
	SIK	SOUTH INTERIOR KARNATAKA
	SKM	SIKKIM
	TLNGN	TELANGANA
	TN	TAMIL NADU
	TRP	TRIPURA
	UP	UTTAR PRADESH
	UTRKN	UTTARAKHAND
	VID	VIDHARBHA
	SHWB	SUB HIMALAYAN WEST BENGAL
	GWB	GANGETIC WEST BENGAL
	ARSEA	ARABIAN SEA
	ILS	ISLANDS
MISCELLANEOUS	ASSW	IN ASSOCIATION WITH
	ASSTD	ASSOCIATED
	LLC	LOW LEVEL CIRCULATION
	EMBDD	EMBEDDED
	N/HOOD	NEIGHBOURHOOD
	EXT	EXTREME