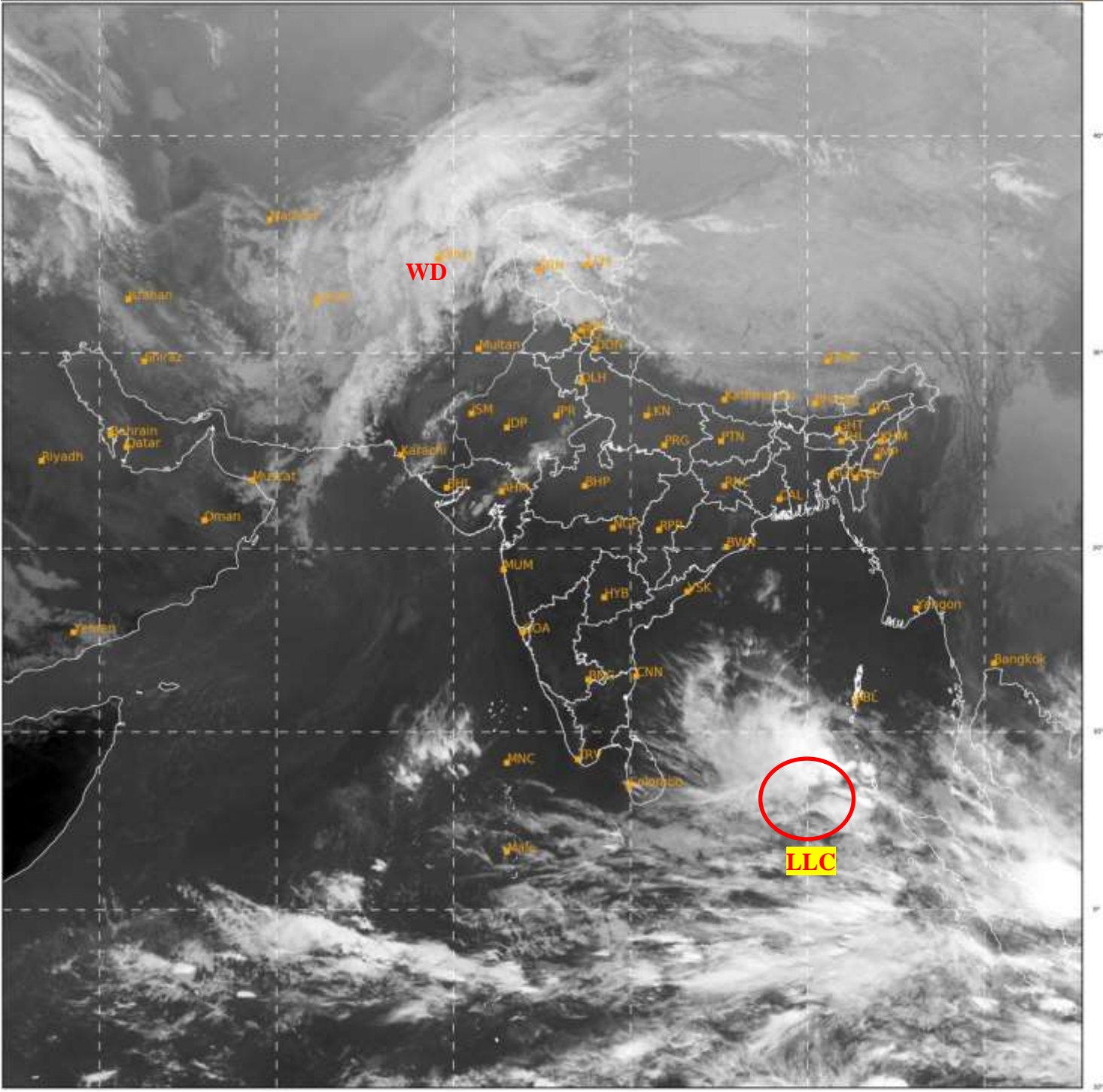




**SATELLITE BULLETIN BASED ON SATELLITE
IMAGERIES AND PRODUCTS**
28.01.2023 TIME 1200 UTC

SAT : INSAT-3D IMG
IMG_TIR1 10.8 um
LIC Mercator

28-01-2023/(1200 to 1226) GMT
28-01-2023/(1730 to 1756) IST



420

951

IMD, DELHI

TCIN50 DEMS 281200

SATELLITE BULLETIN BASED ON INSAT-3D PIC OF 281200 UTC (.)

REGION COVERED BETWEEN LAT 50.0°N TO 35.0°S AND LONG 40.0°E TO 125.0°E (.)

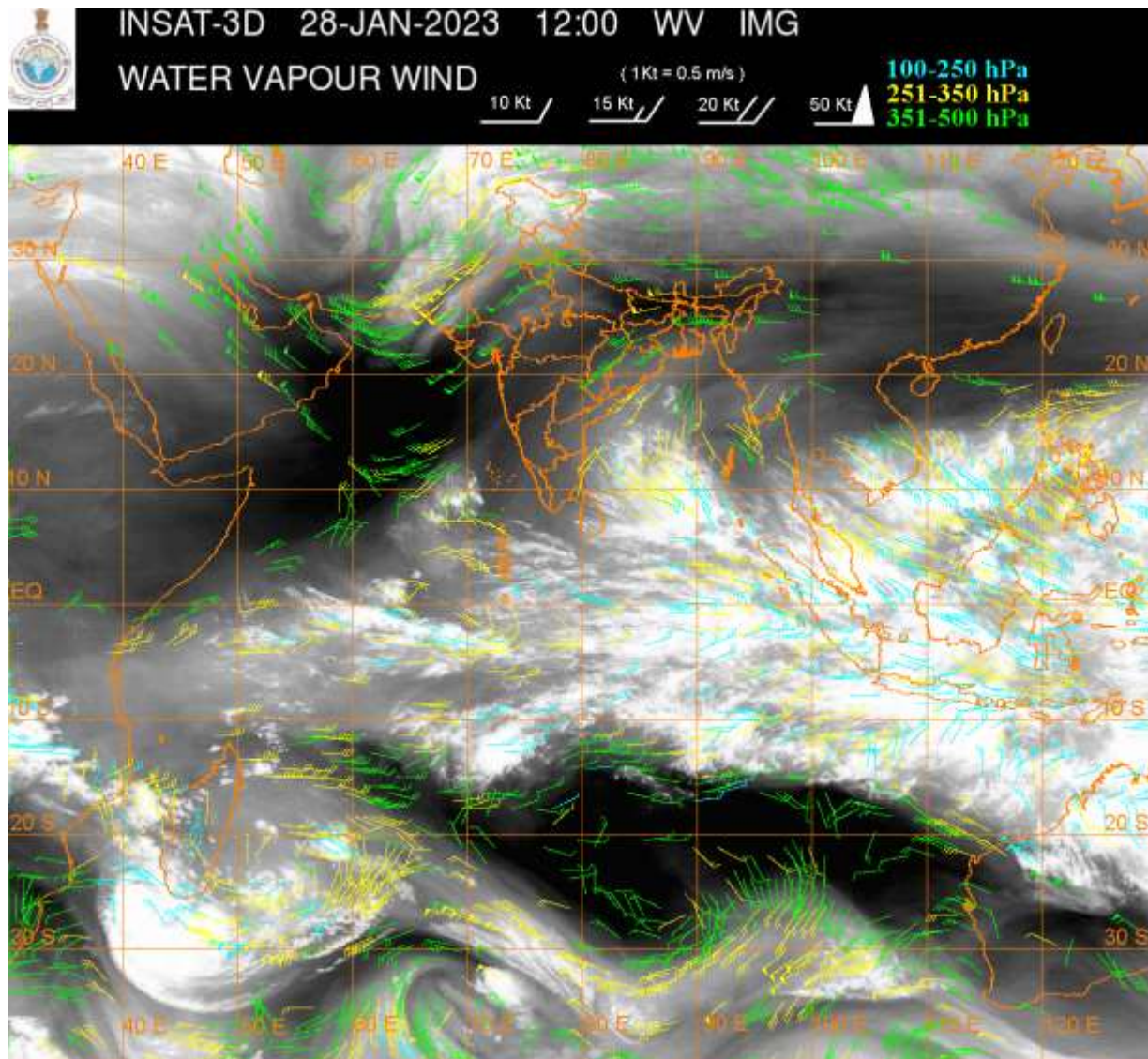
SALIENT FEATURES:-

LLC OVER SOUTH-EAST BAY ADJ EQUATORIAL INDIAN OCEAN:-

SCT TO BKN LOW/MED CLOUDS WITH EMBDD INTENSE TO VERY INTENSE CONVECTION OVER SOUTH EAST BAY ADJ EQUATORIAL INDIAN BET LAT 4.5N TO 10.0N LONG 87.0E TO 93.0E IN ASSW **LLC** OVER THE AREA (.) MINIMUM CTT **MINUS 93** DEGREE CEL (.)

WESTERN DISTURBANCE (WD):-

SCT MULTILAYERED CLOUDS OVER AFGAN PAK LADAKH J&K HP PJB IN ASSW **WD** OVER THE AREA (.)



CLOUDS DESCRIPTION WITHIN INDIA:-

NORTH:-

SCT LOW/MED CLOUDS WITH EMBDD MOD TO INT CONVTN OVER LADAKH J&K HP AND ISOL WK TO MOD CONVTN OVER N PJB N UTRKND (.) ISOL LOW/MED CLOUDS OVER S PJB (.)

EAST:-

SCT LOW/MED CLOUDS WITH EMBDD WK CONVTN OVER SKM ARUPR (.) SCT LOW/MED CLOUDS OVER S JHRKND N ORS ASSAM MEGHA NAGA (.)

WEST:-

SCT LOW/MED CLOUDS WITH EMBDD ISOL WK CONVTN OVER EXT WC & SE RAJ SC & EC GUJ (.) ISOL LOW/MED CLOUDS OVER REST GUJ MP (.)

SOUTH:-

SCT LOW/MED CLOUDS WITH EMBDD MOD TO INT CONVTN OVER NICOBAR ILS AND ISOL WK TO MOD CONVTN OVER S ANDAMAN ILS (.) ISOL TO SCT LOW/MED CLOUDS OVER TN LKSDP ILS (.)

ARABIAN SEA:-

SCT LOW/MED CLOUDS WITH EMBDD ISOL MOD TO INT CONVTN OVER SE ARSEA AND ISOL WK TO MOD CONVTN OVER NW ARSEA (.)

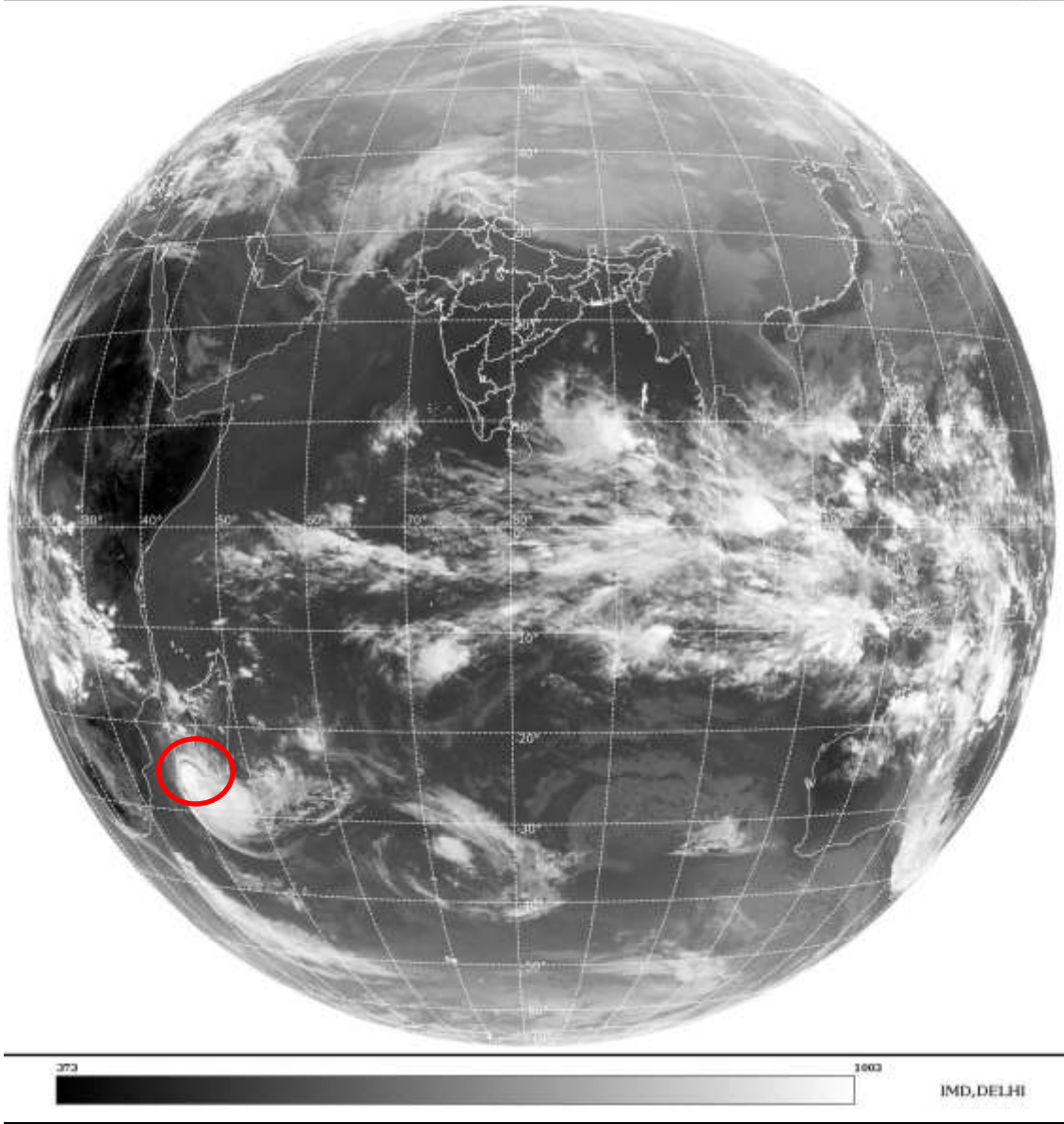
BAY OF BENGAL & ANDAMAN SEA:-

SCT TO BKN LOW/MED CLOUDS WITH EMBDD INT TO V INT CONVTN OVER SE BAY (.) SCT LOW/MED CLOUDS WITH EMBDD MOD TO INT CONVTN OVER SW BAY S ANDAMAN SEA AND ISOL WK TO MOD CONVTN OVER WC BAY (.)

CLOUDS DESCRIPTION OUTSIDE INDIA:-

SAT : INSAT-3D IMG
Thermal Infrared1 Count 10.8 um
L1B FULL DISK

28-01-2023/(1200 to 1226) GMT
28-01-2023/(1730 to 1756) IST



VORTEX (CHENESO) OVER SOUTH MOZAMBIQUE CHANNEL:-

VORTEX (CHENESO) OVER SOUTH MOZAMBIQUE CHANNEL (AREA-D75) CENTERED NEAR 25.7S / 41.6E (.) INTENSITY T4.0/4.5 (.) CORRESPONDING MAXIMUM SUSTAINED WINDS OF 64-89 KTS (.) ASSTD BKN LOW/MED CLOUDS WITH EMBDD INT TO V INT CONVTN OVER S MOZAMBIQUE CHANNEL & S MADAGASCAR (.)

SCT LOW/MED CLOUDS WITH EMBDD MOD TO INT CONVTN OVER MALDIVES S THAILAND GULF OF THAILAND SUMATRA STR OF MALACCA MALAYSIA BORNEO SOUTH CHINA SEA JAVA ILS & SEA CELEBES ILS & SEA PHILIPPINES MADAGASCAR MOZAMBIQUE CHANNEL AND OVER INDIAN OCEAN BET LAT 5.0N TO 15.0S LONG 50.0E TO 120.0E AND BET LAT 20.0S TO 30.0S LONG 40.0E TO 86.0E (.)

TOO 28/1840 HRS IST=

NNNN

LEGEND:-

| | | |
|---------------|--------------|--|
| REGION | NORTH | J&K HP PJB HARY DLH UP UTRKND |
| | EAST | BHR JHRKND CHTGH OR WB SKM NORTH- EAST STATES |
| | WEST | RAJ MP GUJ MAHA GOA |

| | | |
|--|--------------|--|
| | SOUTH | TLNGN AP KRNTK KER TN LKSDP ANDAMAN & NICOBAR ILS |
|--|--------------|--|

| | | | |
|---|---------------------|---|-------------------|
| CLOUD DISTRIBUTION | ISOL | ISOLATED (LESS THAN 25%) | |
| | SCT | SCATTERED (25 TO 50%) | |
| | BKN | BROKEN (51 TO 75%) | |
| | SLD | SOLID (GREATER THAN 75%) | |
| CLOUDS TOP TEMPERATURE | CTT | CLOUD TOP TEMPERATURE | |
| CONVECTION | WK CONVTN | WEAK CONVECTION (CTT GREATER THAN -25°C) | |
| | MOD CONVTN | MODERATE CONVECTION (CTT BETWEEN -25°C TO -40°C) | |
| | INT CONVTN | INTENSE CONVECTION (CTT BETWEEN -41°C TO -70°C) | |
| | V INT CONVTN | VERY INTENSE CONVECTION (CTT LESS THAN -70°C) | |
| METEOROLOGICAL SUB-DIVISIONS, STATES & UNION TERRITORIES | ARUPR | ARUNACHAL PRADESH | |
| | BHR | BIHAR | |
| | CHTGH | CHHATTISGARH | |
| | COTL AP | COASTAL ANDHRA PRADESH | |
| | COTL KRNTK | COASTAL KARNATAKA | |
| | COTL ORS | COASTAL ORISSA | |
| | GUJ | GUJARAT | |
| | GWB | GANGETIC WEST BENGAL | |
| | HARY | HARYANA | |
| | DLH | DELHI | |
| | HP | HIMACHAL PRADESH | |
| | J&K | JAMMU AND KASHMIR | |
| | JHRKND | JHARKHAND | |
| | KER | KERALA | |
| | KKN | KONKAN | |
| | LKSDP | LAKSHADWEEP | |
| | M MAHA | MADHYA MAHARASHTRA | |
| | MAHA | MAHARASHTRA | |
| | MANI | MANIPUR | |
| | MEGHA | MEGHALAYA | |
| | MIZO | MIZORAM | |
| | MP | MADHYA PRADESH | |
| | | MRTHWD | MARATHWADA |
| | | NAGA | NAGALAND |
| N COTL AP | | NORTH COASTAL ANDHRA PRADESH | |
| NIK | | NORTH INTERIOR KARNATAKA | |
| ORS | | ORISSA | |
| PJB | | PUNJAB | |
| RAJ | | RAJASTHAN | |
| RYLSM | | RAYALASEEMA | |
| SAU & KUTCH | | SAURASHTRA & KUTCH | |
| SHWB | | SUB-HIMALAYAN WEST BENGAL | |

| | | |
|----------------------|---------------|----------------------------------|
| | SIK | SOUTH INTERIOR KARNATAKA |
| | SKM | SIKKIM |
| | TLNGN | TELANGANA |
| | TN | TAMIL NADU |
| | TRP | TRIPURA |
| | UP | UTTAR PRADESH |
| | UTRKND | UTTARAKHAND |
| | VID | VIDHARBHA |
| | SHWB | SUB HIMALAYAN WEST BENGAL |
| | GWB | GANGETIC WEST BENGAL |
| | ARSEA | ARABIAN SEA |
| | ILS | ISLANDS |
| MISCELLANEOUS | ASSW | IN ASSOCIATION WITH |
| | ASSTD | ASSOCIATED |
| | LLC | LOW LEVEL CIRCULATION |
| | EMBDD | EMBEDDED |
| | N/HOOD | NEIGHBOURHOOD |
| | EXT | EXTREME |