



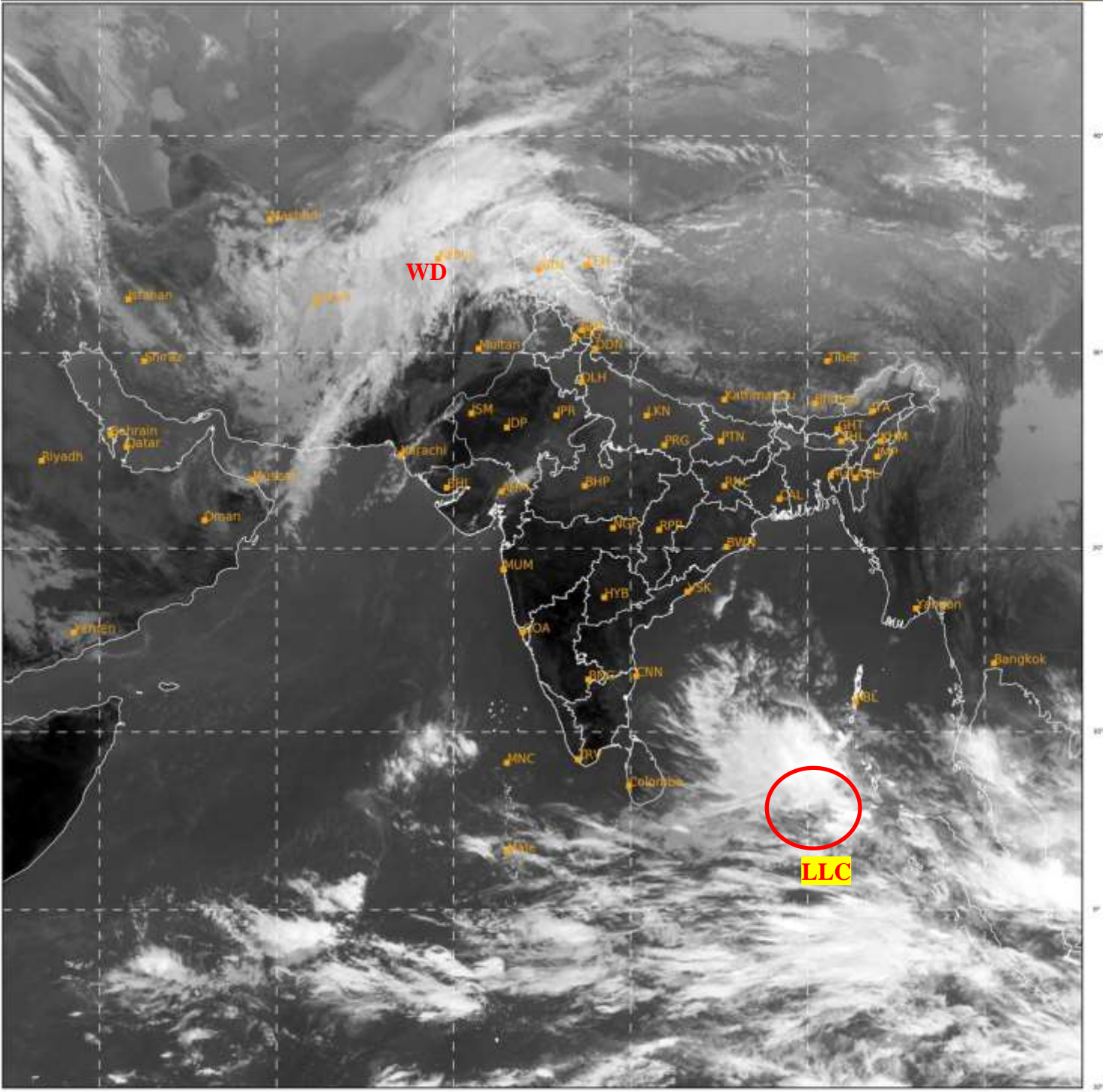
भारत मौसम विज्ञान विभाग
पृथ्वी विज्ञान मंत्रालय
India Meteorological Department
Ministry of Earth Sciences



**SATELLITE BULLETIN BASED ON SATELLITE
IMAGERIES AND PRODUCTS**
28.01.2023 TIME 0900 UTC

SAT : INSAT-3D IMG
IMG_TIR1 10.8 um
LIC Mercator

28-01-2023/(0900 to 0926) GMT
28-01-2023/(1430 to 1456) IST



402

945

IMD, DELHI

TCIN50 DEMS 280900

SATELLITE BULLETIN BASED ON INSAT-3D PIC OF 280900 UTC (.)

REGION COVERED BETWEEN LAT 50.0°N TO 35.0°S AND LONG 40.0°E TO 125.0°E (.)

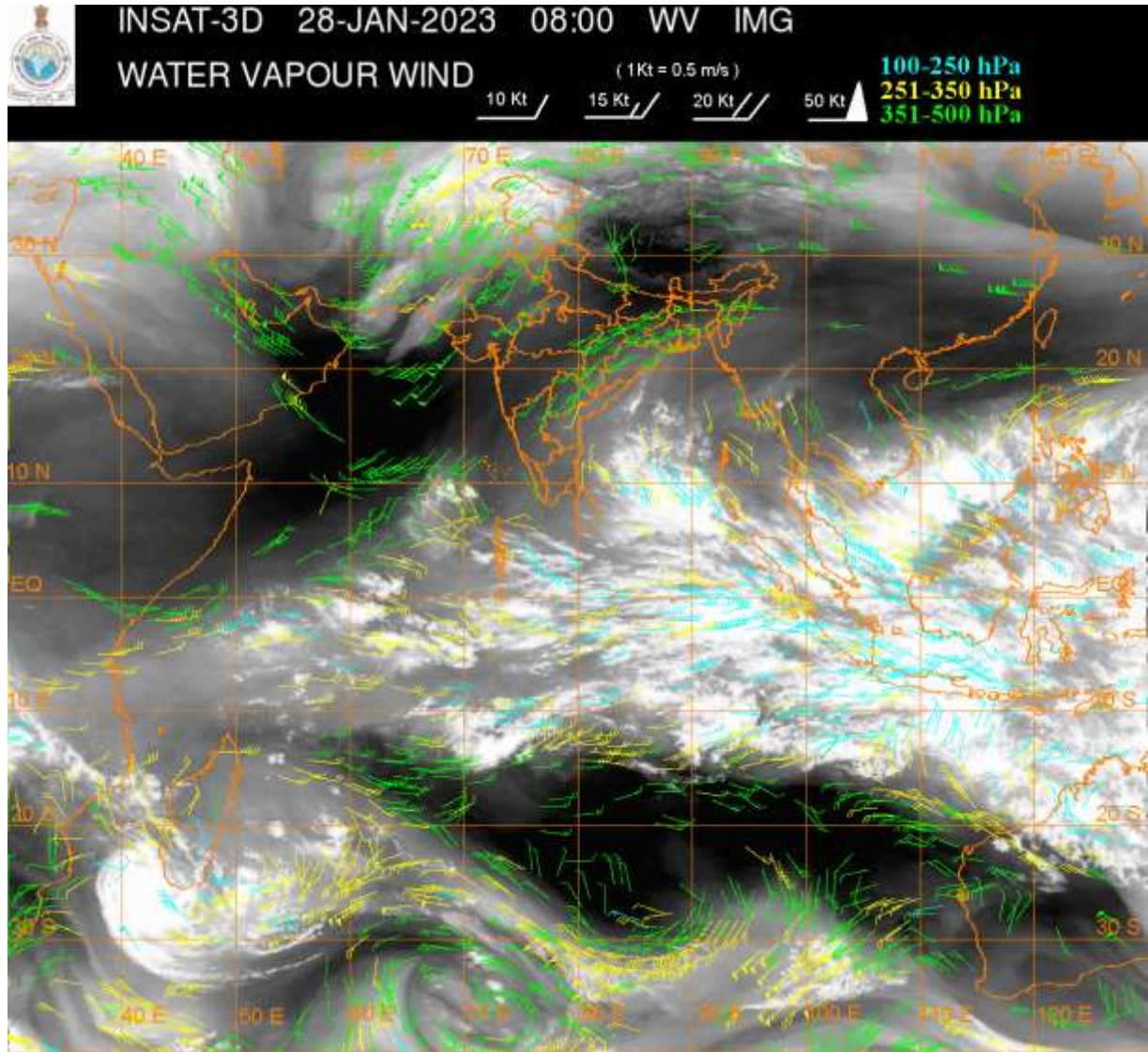
SALIENT FEATURES:-

LLC OVER SOUTH-EAST BAY ADJ EQUATORIAL INDIAN OCEAN:-

SCT TO BKN LOW/MED CLOUDS WITH EMBDD INTENSE TO VERY INTENSE CONVECTION OVER SOUTH EAST BAY ADJ EQUATORIAL INDIAN BET LAT 4.0N TO 10.0N LONG 87.0E TO 93.0E IN ASSW **LLC** OVER THE AREA (.) MINIMUM CTT **MINUS 93** DEGREE CEL (.)

WESTERN DISTURBANCE (WD):-

SCT MULTILAYERED CLOUDS OVER AFGAN PAK LADAKH J&K HP PJB IN ASSW **WD** OVER THE AREA (.)



CLOUDS DESCRIPTION WITHIN INDIA:-

NORTH:-

SCT LOW/MED CLOUDS WITH EMBDD MOD TO INT CONVTN OVER LADAKH J&K HP AND ISOL WK TO MOD CONVTN OVER W PJB N UTRKND (.) ISOL LOW/MED CLOUDS OVER E PJB (.)

EAST:-

SCT LOW/MED CLOUDS WITH EMBDD WK CONVTN OVER SKM ARUPR (.) SCT LOW/MED CLOUDS OVER S JHRKND N ORS ASSAM MEGHA NAGA (.)

WEST:-

SCT LOW/MED CLOUDS WITH EMBDD ISOL WK CONVTN OVER SE RAJ EC GUJ (.) ISOL LOW/MED CLOUDS OVER REST GUJ MP (.)

SOUTH:-

SCT LOW/MED CLOUDS WITH EMBDD ISOL WK TO MOD CONVTN OVER S ANDAMAN & NICOBAR ILS (.) ISOL TO SCT LOW/MED CLOUDS OVER E TN LKSDP ILS (.)

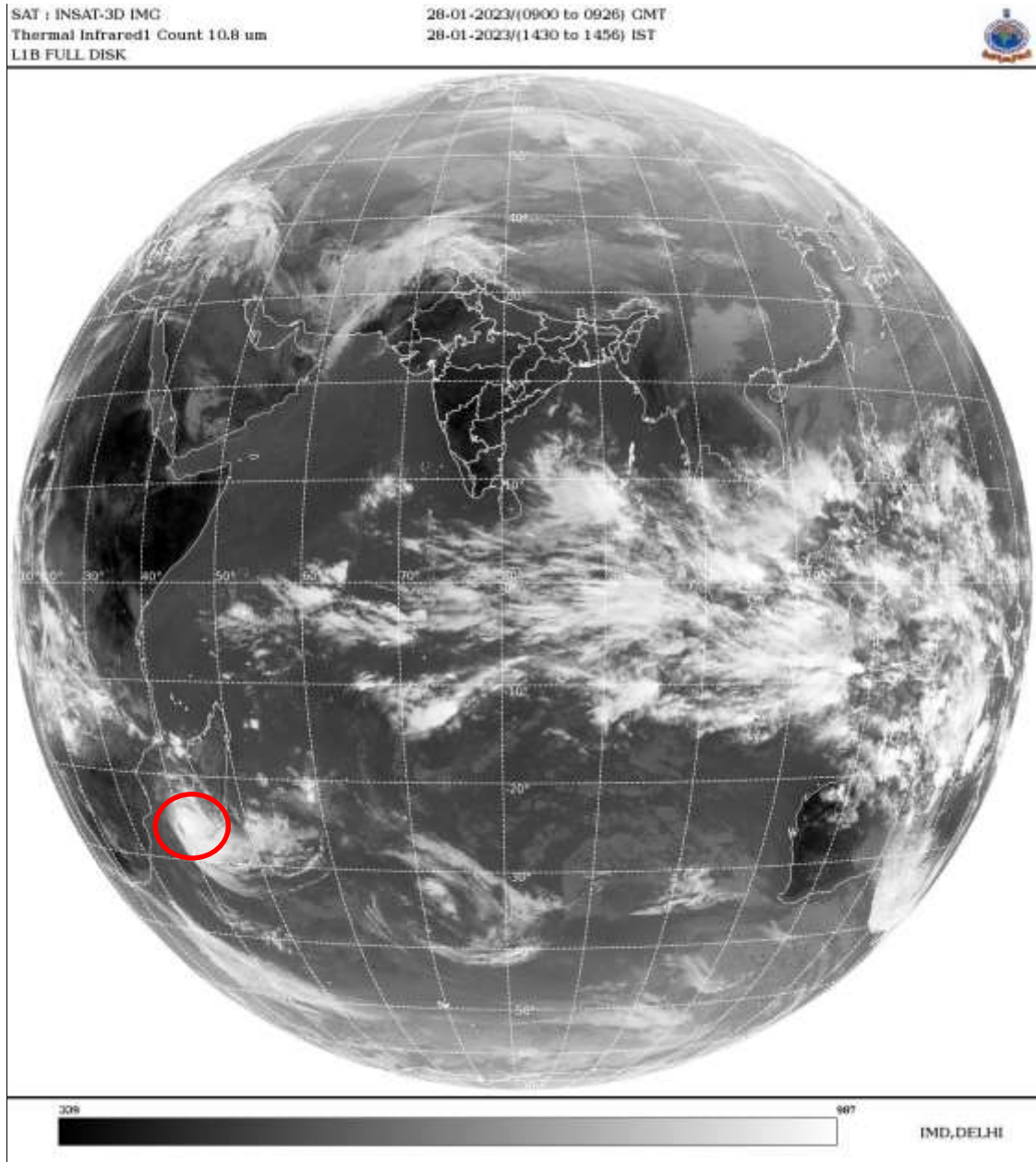
ARABIAN SEA:-

SCT LOW/MED CLOUDS WITH EMBDD ISOL MOD TO INT CONVTN OVER SE ARSEA AND ISOL WK TO MOD CONVTN OVER NW ARSEA (.)

BAY OF BENGAL & ANDAMAN SEA:-

SCT TO BKN LOW/MED CLOUDS WITH EMBDD INT TO V INT CONVTN OVER SE BAY (.) SCT LOW/MED CLOUDS WITH EMBDD MOD TO INT CONVTN OVER SW BAY S ANDAMAN SEA AND ISOL WK TO MOD CONVTN OVER C BAY (.)

CLOUDS DESCRIPTION OUTSIDE INDIA:-



VORTEX (CHENESO) OVER SOUTH MOZAMBIQUE CHANNEL:-

VORTEX (CHENESO) OVER SOUTH MOZAMBIQUE CHANNEL (AREA-D75) CENTERED NEAR 25.3S / 41.6E (.) INTENSITY T4.5/5.0 (.) CORRESPONDING MAXIMUM SUSTAINED WINDS OF 90-119 KTS (.) ASSTD BKN LOW/MED CLOUDS WITH EMBDD INT TO V INT CONVTN OVER S MOZAMBIQUE CHANNEL & S MADAGASCAR (.)

SCT LOW/MED CLOUDS WITH EMBDD MOD TO INT CONVTN OVER MALDIVES THAILAND GULF OF THAILAND SUMATRA STR OF MALACCA MALAYSIA BORNEO SOUTH CHINA SEA JAVA ILS & SEA CELEBES ILS & SEA PHILIPPINES S MADAGASCAR MOZAMBIQUE CHANNEL AND OVER INDIAN OCEAN BET LAT 5.0N TO 15.0S LONG 50.0E TO 120.0E AND BET LAT 20.0S TO 30.0S LONG 40.0E TO 86.0E (.)

TOO 28/1530 HRS IST=

NNNN

LEGEND:-

REGION	NORTH	J&K HP PJB HARY DLH UP UTRKND
	EAST	BHR JHRKND CHTGH OR WB SKM NORTH- EAST STATES
	WEST	RAJ MP GUJ MAHA GOA

	SOUTH	TLNGN AP KRNTK KER TN LKSDP ANDAMAN & NICOBAR ILS
--	--------------	--

CLOUD DISTRIBUTION	ISOL	ISOLATED (LESS THAN 25%)	
	SCT	SCATTERED (25 TO 50%)	
	BKN	BROKEN (51 TO 75%)	
	SLD	SOLID (GREATER THAN 75%)	
CLOUDS TOP TEMPERATURE	CTT	CLOUD TOP TEMPERATURE	
CONVECTION	WK CONVTN	WEAK CONVECTION (CTT GREATER THAN -25°C)	
	MOD CONVTN	MODERATE CONVECTION (CTT BETWEEN -25°C TO -40°C)	
	INT CONVTN	INTENSE CONVECTION (CTT BETWEEN -41°C TO -70°C)	
	V INT CONVTN	VERY INTENSE CONVECTION (CTT LESS THAN -70°C)	
METEOROLOGICAL SUB-DIVISIONS, STATES & UNION TERRITORIES	ARUPR	ARUNACHAL PRADESH	
	BHR	BIHAR	
	CHTGH	CHHATTISGARH	
	COTL AP	COASTAL ANDHRA PRADESH	
	COTL KRNTK	COASTAL KARNATAKA	
	COTL ORS	COASTAL ORISSA	
	GUJ	GUJARAT	
	GWB	GANGETIC WEST BENGAL	
	HARY	HARYANA	
	DLH	DELHI	
	HP	HIMACHAL PRADESH	
	J&K	JAMMU AND KASHMIR	
	JHRKND	JHARKHAND	
	KER	KERALA	
	KKN	KONKAN	
	LKSDP	LAKSHADWEEP	
	M MAHA	MADHYA MAHARASHTRA	
	MAHA	MAHARASHTRA	
	MANI	MANIPUR	
	MEGHA	MEGHALAYA	
	MIZO	MIZORAM	
	MP	MADHYA PRADESH	
		MRTHWD	MARATHWADA
		NAGA	NAGALAND
N COTL AP		NORTH COASTAL ANDHRA PRADESH	
NIK		NORTH INTERIOR KARNATAKA	
ORS		ORISSA	
PJB		PUNJAB	
RAJ		RAJASTHAN	
RYLSM		RAYALASEEMA	
SAU & KUTCH		SAURASHTRA & KUTCH	
SHWB		SUB-HIMALAYAN WEST BENGAL	

	SIK	SOUTH INTERIOR KARNATAKA
	SKM	SIKKIM
	TLNGN	TELANGANA
	TN	TAMIL NADU
	TRP	TRIPURA
	UP	UTTAR PRADESH
	UTRKND	UTTARAKHAND
	VID	VIDHARBHA
	SHWB	SUB HIMALAYAN WEST BENGAL
	GWB	GANGETIC WEST BENGAL
	ARSEA	ARABIAN SEA
	ILS	ISLANDS
MISCELLANEOUS	ASSW	IN ASSOCIATION WITH
	ASSTD	ASSOCIATED
	LLC	LOW LEVEL CIRCULATION
	EMBDD	EMBEDDED
	N/HOOD	NEIGHBOURHOOD
	EXT	EXTREME