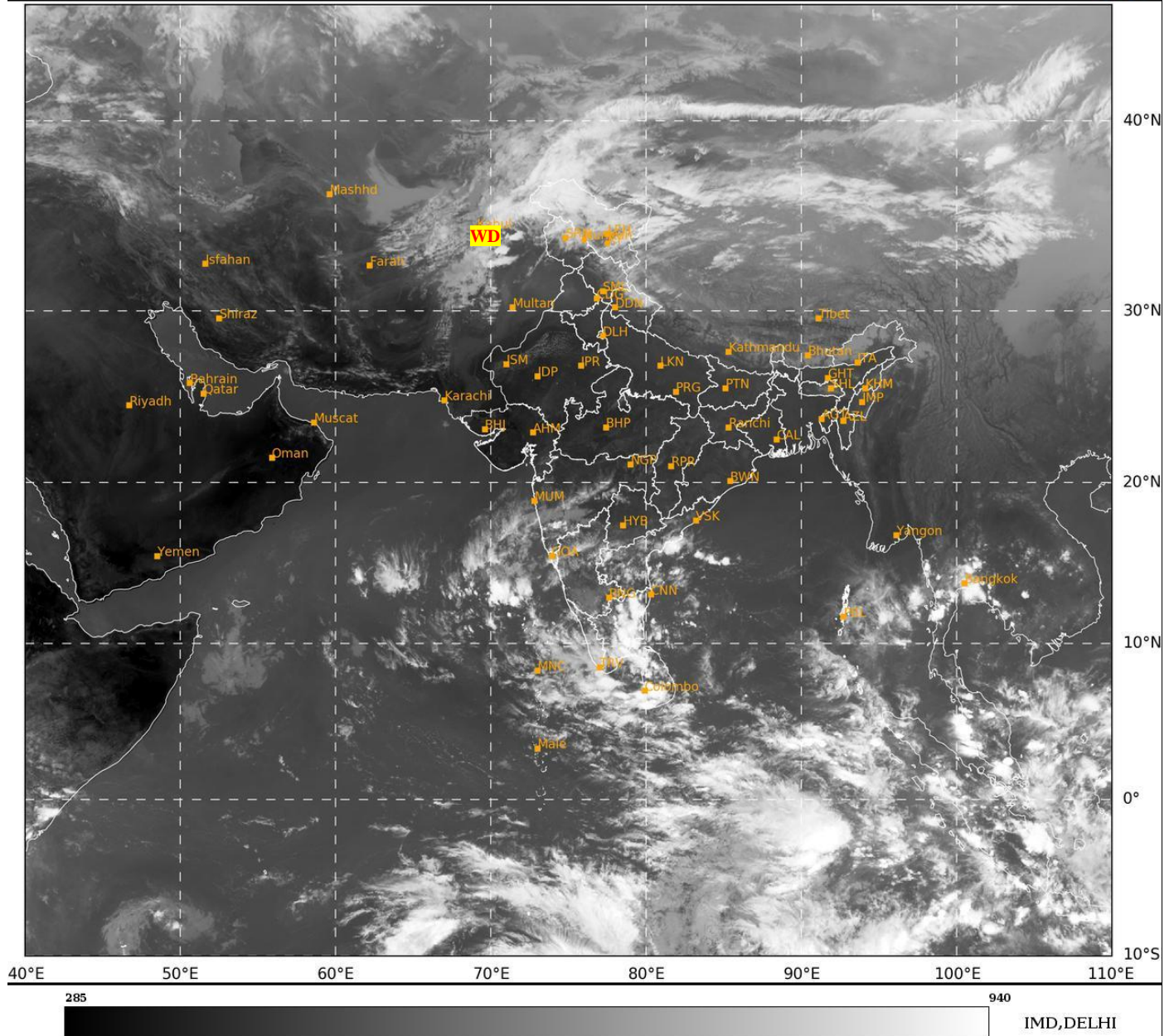




**SATELLITE BULLETIN BASED ON SATELLITE  
IMAGERIES AND PRODUCTS**  
**15.11.2024 TIME 0900 UTC**

SAT : INSAT-3DR IMG  
IMG\_TIR1 10.8 um  
LIC Mercator

15-11-2024/(0915 to 0942) GMT  
15-11-2024/(1445 to 1512) IST



TCIN50 DEMS 150900

SATELLITE BULLETIN BASED ON INSAT-3DR PIC OF 150915 UTC (.)

REGION COVERED BETWEEN LAT 50.0°N TO 35.0°S AND LONG 40.0°E TO 125.0°E (.)

**SALIENT FEATURES:-**

**WESTERN DISTURBANCE:-**

SCT MULTILAYERED CLOUDS OVER E AFGAN PAK LADAKH J&K N HP N UTRKND TIBET ADJ CHINA IN ASSW **WD** OVER THE AREA (.)

**CONVECTIVE / THUNDERSTORM ACTIVITY:-**

INTENSE TO VERY INTENSE CONVECTIVE / THUNDERSTORM ACTIVITY OBSERVED OVER TN (MINIMUM CTT **MINUS 75 DEG CEL**) (.)

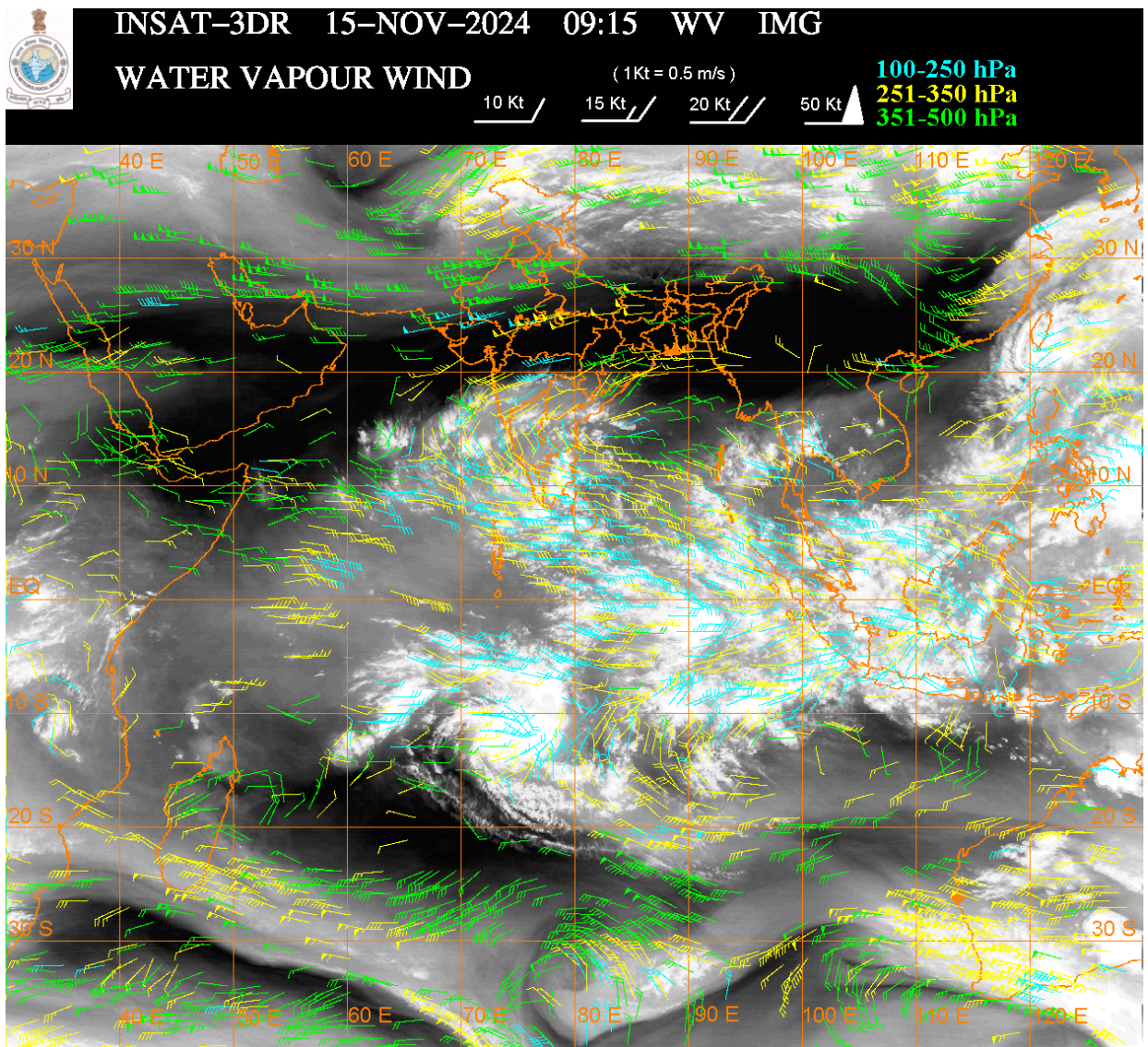
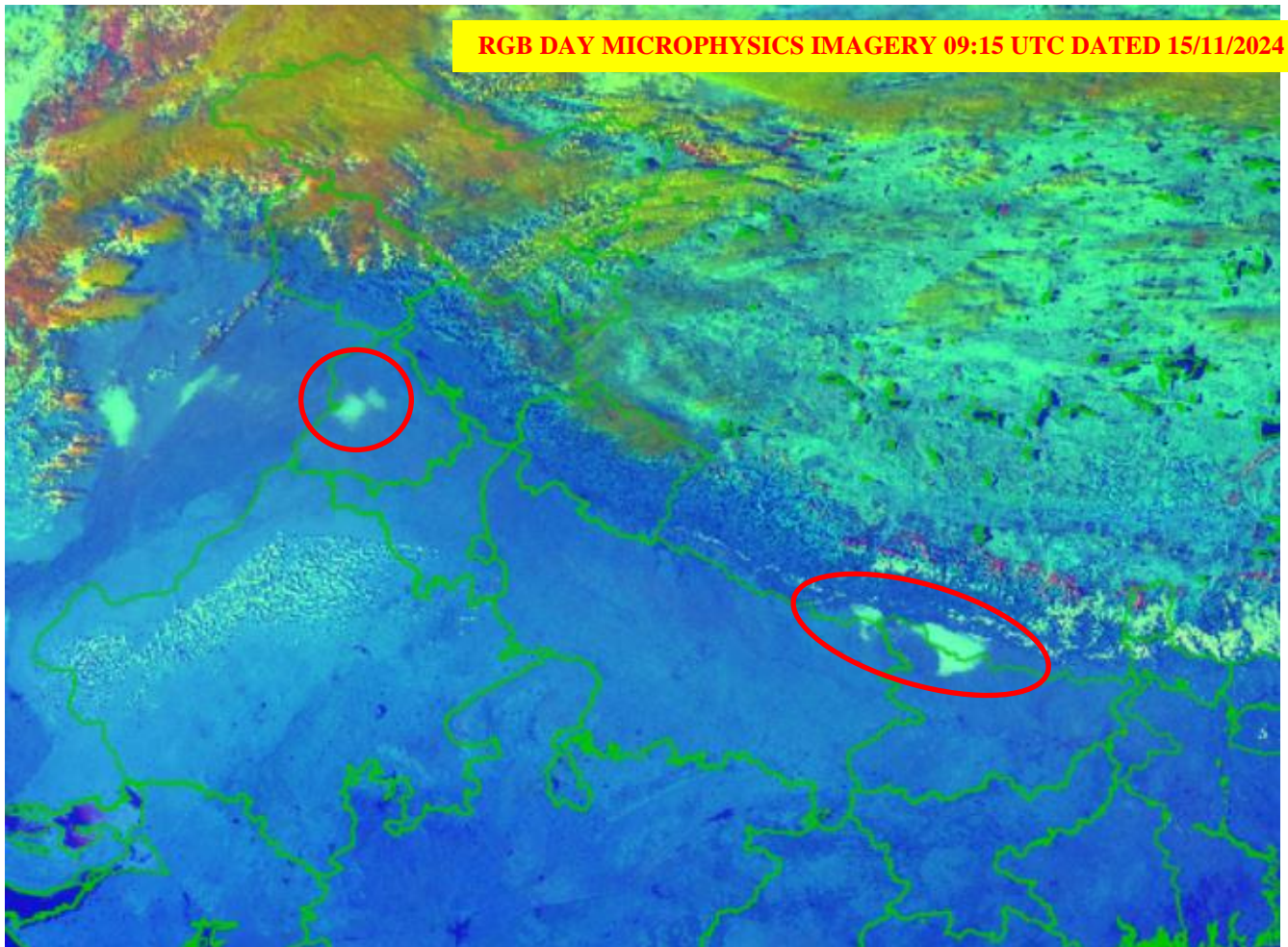
MODERATE TO INTENSE CONVECTIVE / THUNDERSTORM ACTIVITY OBSERVED OVER LADAKH J&K SOUTH MADHYA MAHA S KKN GOA KRNTK RYLSM COTL AP KER LKSDP ILS NICOBAR ILS (MINIMUM CTT **MINUS 50-70 DEG CEL**) (.)

**FOG / LOW CLOUDS :-**

**RGB COMPOSITE DAY MICROPHYSICS IMAGERY OF INSAT 3DR (RAPID) AT 09:15 UTC INDICATES ISOL TO SCT FOG/ LOW CLOUDS OVER WC PJB EXT NE UP EXT NW BHR ADJ NEPAL (.)**

**JET STREAM:-**

**JET STREAM OBSERVED OVER NORTH AND CENTRAL INDIA NORTH OF LAT 20.0N (.)**



**CLOUDS DESCRIPTION WITHIN INDIA:-**

**NORTH:-**

SCT LOW/MED CLOUDS WITH EMBDD MOD TO INT CONVTN OVER LADAKH J&K AND WK TO MOD CONVTN OVER N HP N UTRKND (.) SCT LOW/MED CLOUDS OVER S HARY (.)

**EAST:-**

SCT LOW/MED CLOUDS WITH EMBDD ISOL WK CONVTN OVER SKM ARUPR (.) ISOL TO SCT LOW/MED CLOUDS OVER CHTGH ORS SHWB REST NE STATES (.)

**WEST:-**

SCT LOW/MED CLOUDS WITH EMBDD MOD TO INT CONVTN OVER SOUTH MADHYA MAHA S KKN GOA AND ISOL WK TO MOD CONVTN OVER REST MAHA (.) SCT LOW/MED CLOUDS OVER W & NE RAJ EXT SW MP SE GUJ (.)

**SOUTH:-**

SCT TO BKN LOW/MED CLOUDS WITH EMBDD INT TO V INT CONVTN OVER TN (MINIMUM CTT MINUS 75 DEG CEL) (.) SCT LOW/MED CLOUDS WITH EMBDD MOD TO INT CONVTN OVER KRNTK RYLSM COTL AP KER LKSDP ILS NICOBAR ILS AND ISOL WK TO MOD CONVTN OVER TLNGN ANDAMAN ILS (.)

**ARABIAN SEA:-**

SCT LOW/MED CLOUDS WITH EMBDD MOD TO INT CONVTN OVER CENTRAL & SOUTH ARSEA LKSDP ILS AREA MALDIVES & COMORIN AREA (.)

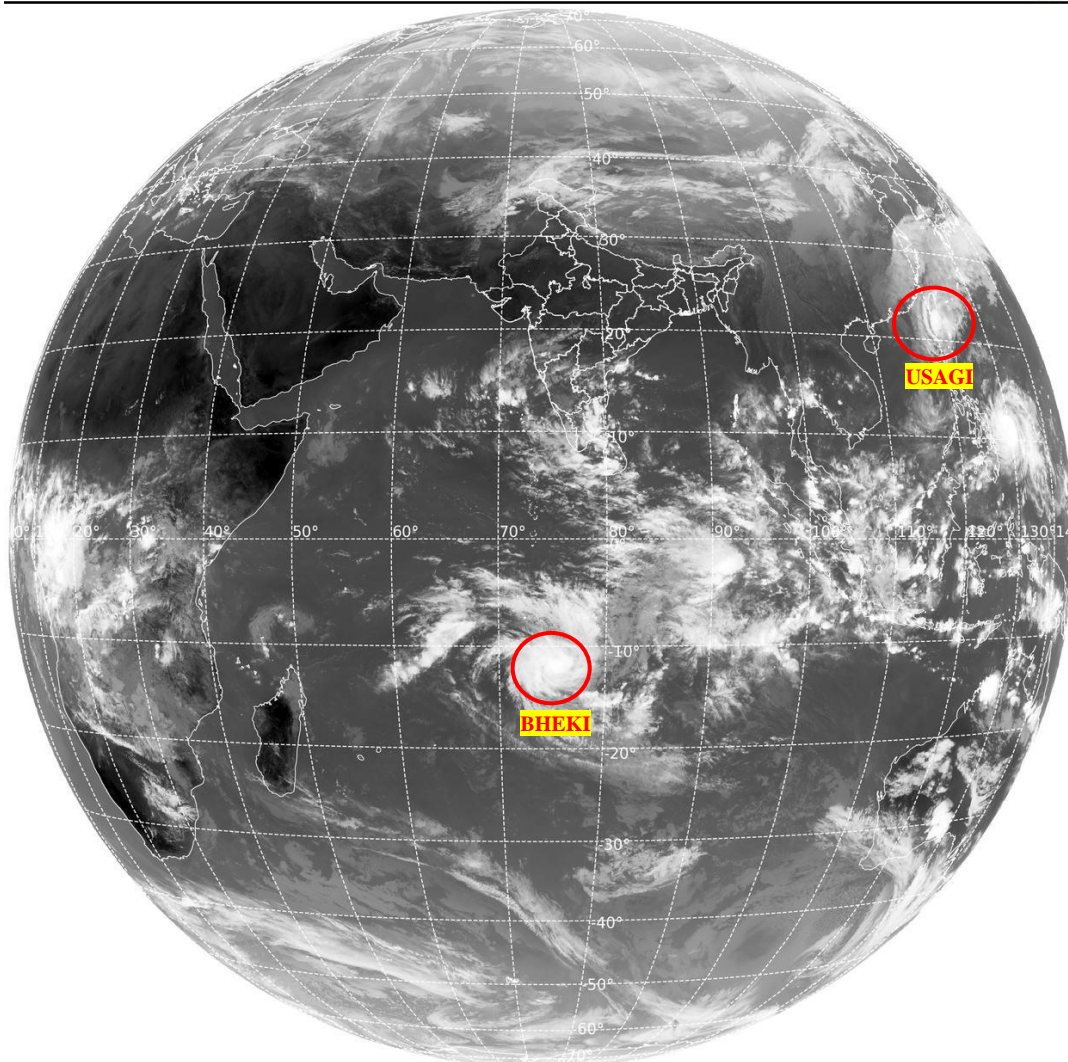
**BAY OF BENGAL & ANDAMAN SEA:-**

SCT LOW/MED CLOUDS WITH EMBDD MOD TO INT CONVTN OVER WC BAY SOUTH BAY ANDAMAN SEA & TENASSERIM COAST (.)

**CLOUDS DESCRIPTION OUTSIDE INDIA:-**

SAT : INSAT-3DR IMG  
Thermal Infrared1 Count 10.8 um  
LIB FULL DISK

15-11-2024/(0915 to 0942) GMT  
15-11-2024/(1445 to 1512) IST



**VORTEX (USAGI) OVER EAST CHINA SEA ADJ TAIWAN:-**

VORTEX (USAGI) OVER EAST CHINA SEA ADJ TAIWAN (AREA F05) CENTERED NEAR 21.3N / 120.4E (.) INTENSITY T3.5/4.5 (.) MAXIMUM SUSTAINED WINDS 64-89 KTS (.) ASSTD SCT TO BKN LOW/MED CLOUDS WITH EMBDD INT TO V INT CONVTN OVER AREA BET LAT 18.0N TO 27.0N LONG 117.0E TO 127.0E & TAIWAN N PHILIPPINES (.)

**VORTEX (BHEKI) OVER SOUTH INDIAN OCEAN:-**

VORTEX (BHEKI) OVER SOUTH INDIAN OCEAN (AREA E80 ADJ E65) CENTERED NEAR 11.9 S / 75.2E (.) INTENSITY T4.0/4.0 (.) MAXIMUM SUSTAINED WINDS 64-89 KTS (.) ASSTD BKN LOW/MED CLOUDS WITH EMBDD INT TO V INT CONVTN OVER AREA BET LAT 4.0S TO 18.0S LONG 70.0E TO 80.0E (.)

SCT LOW/MED CLOUDS WITH EMBDD MOD TO INT CONVTN OVER SRI LANKA PALK STR GULF OF MANNAR MALDIVES N PAK NORTH TIBET CHINA YELLOW SEA EAST CHINA SEA TAIWAN S THAILAND GULF OF THAILAND CAMBODIA SUMATRA STR OF MALACCA MALAYSIA BORNEO SOUTH CHINA SEA JAVA ILS & SEA CELEBES ILS & SEA PHILIPPINES SULU SEA AND OVER INDIAN OCEAN BET LAT 5.0N TO 25.0S LONG 45.0E TO 120.0E (.)

TOO 15/1540 HRS IST=

NNNN

**LEGEND:-**

|   |              |   |
|---|--------------|---|
| REGION  | NORTH        | J&K HP PJB HARY DLH UP UTRKND                     |
|   | EAST         | BHR JHRKND CHTGH ORS WB SKM NORTH- EAST STATES    |
|   | WEST         | RAJ MP GUJ MAHA GOA                               |
|   | SOUTH        | TLNGN AP KRNTK KER TN LKSDP ANDAMAN & NICOBAR ILS |
| CLOUD DISTRIBUTION  | ISOL         | ISOLATED (LESS THAN 25%)                          |
|   | SCT          | SCATTERED (25 TO 50%)                             |
|   | BKN          | BROKEN (51 TO 75%)                                |
|   | SLD          | SOLID (GREATER THAN 75%)                          |
| CLOUDS TOP TEMPERATURE                                    | CTT          | CLOUD TOP TEMPERATURE                             |
| CONVECTION  | WK CONVTN    | WEAK CONVECTION (CTT GREATER THAN -25°C)          |
|   | MOD CONVTN   | MODERATE CONVECTION (CTT BETWEEN -25°C TO -40°C)  |
|   | INT CONVTN   | INTENSE CONVECTION (CTT BETWEEN -41°C TO -70°C)   |
|   | V INT CONVTN | VERY INTENSE CONVECTION (CTT LESS THAN -70°C)     |
| METEOROLOGICAL SUB- DIVISIONS, STATES & UNION TERRITORIES | ARUPR        | ARUNACHAL PRADESH                                 |
|   | BHR          | BIHAR   |
|   | CHTGH        | CHHATTISGARH                                      |
|   | COTL AP      | COASTAL ANDHRA PRADESH                            |
|   | COTL KRNTK   | COASTAL KARNATAKA                                 |
|   | COTL ORS     | COASTAL ORISSA                                    |
|   | GUJ          | GUJARAT   |
|   | GWB          | GANGETIC WEST BENGAL                              |
| HARY  | HARYANA      |   |

|                      |                        |                                     |
|----------------------|------------------------|-------------------------------------|
|                      | <b>DLH</b>             | <b>DELHI</b>                        |
|                      | <b>HP</b>              | <b>HIMACHAL PRADESH</b>             |
|                      | <b>J&amp;K</b>         | <b>JAMMU AND KASHMIR</b>            |
|                      | <b>JHRKND</b>          | <b>JHARKHAND</b>                    |
|                      | <b>KER</b>             | <b>KERALA</b>                       |
|                      | <b>KKN</b>             | <b>KONKAN</b>                       |
|                      | <b>LKSDP</b>           | <b>LAKSHADWEEP</b>                  |
|                      | <b>M MAHA</b>          | <b>MADHYA MAHARASHTRA</b>           |
|                      | <b>MAHA</b>            | <b>MAHARASHTRA</b>                  |
|                      | <b>MANI</b>            | <b>MANIPUR</b>                      |
|                      | <b>MEGHA</b>           | <b>MEGHALAYA</b>                    |
|                      | <b>MIZO</b>            | <b>MIZORAM</b>                      |
|                      | <b>MP</b>              | <b>MADHYA PRADESH</b>               |
|                      | <b>MRTHWD</b>          | <b>MARATHWADA</b>                   |
|                      | <b>NAGA</b>            | <b>NAGALAND</b>                     |
|                      | <b>N COTL AP</b>       | <b>NORTH COASTAL ANDHRA PRADESH</b> |
|                      | <b>NIK</b>             | <b>NORTH INTERIOR KARNATAKA</b>     |
|                      | <b>ORS</b>             | <b>ORISSA</b>                       |
|                      | <b>PJB</b>             | <b>PUNJAB</b>                       |
|                      | <b>RAJ</b>             | <b>RAJASTHAN</b>                    |
|                      | <b>RYLSM</b>           | <b>RAYALASEEMA</b>                  |
|                      | <b>SAU &amp; KUTCH</b> | <b>SAURASHTRA &amp; KUTCH</b>       |
|                      | <b>SHWB</b>            | <b>SUB-HIMALAYAN WEST BENGAL</b>    |
|                      | <b>SIK</b>             | <b>SOUTH INTERIOR KARNATAKA</b>     |
|                      | <b>SKM</b>             | <b>SIKKIM</b>                       |
|                      | <b>TLNGN</b>           | <b>TELANGANA</b>                    |
|                      | <b>TN</b>              | <b>TAMIL NADU</b>                   |
|                      | <b>TRP</b>             | <b>TRIPURA</b>                      |
|                      | <b>UP</b>              | <b>UTTAR PRADESH</b>                |
|                      | <b>UTRKND</b>          | <b>UTTARAKHAND</b>                  |
|                      | <b>VID</b>             | <b>VIDHARBHA</b>                    |
|                      | <b>SHWB</b>            | <b>SUB HIMALAYAN WEST BENGAL</b>    |
|                      | <b>GWB</b>             | <b>GANGETIC WEST BENGAL</b>         |
|                      | <b>ARSEA</b>           | <b>ARABIAN SEA</b>                  |
|                      | <b>ILS</b>             | <b>ISLANDS</b>                      |
| <b>MISCELLANEOUS</b> | <b>ASSW</b>            | <b>IN ASSOCIATION WITH</b>          |
|                      | <b>ASSTD</b>           | <b>ASSOCIATED</b>                   |
|                      | <b>LLC</b>             | <b>LOW LEVEL CIRCULATION</b>        |
|                      | <b>EMBDD</b>           | <b>EMBEDDED</b>                     |
|                      | <b>N/HOOD</b>          | <b>NEIGHBOURHOOD</b>                |
|                      | <b>EXT</b>             | <b>EXTREME</b>                      |