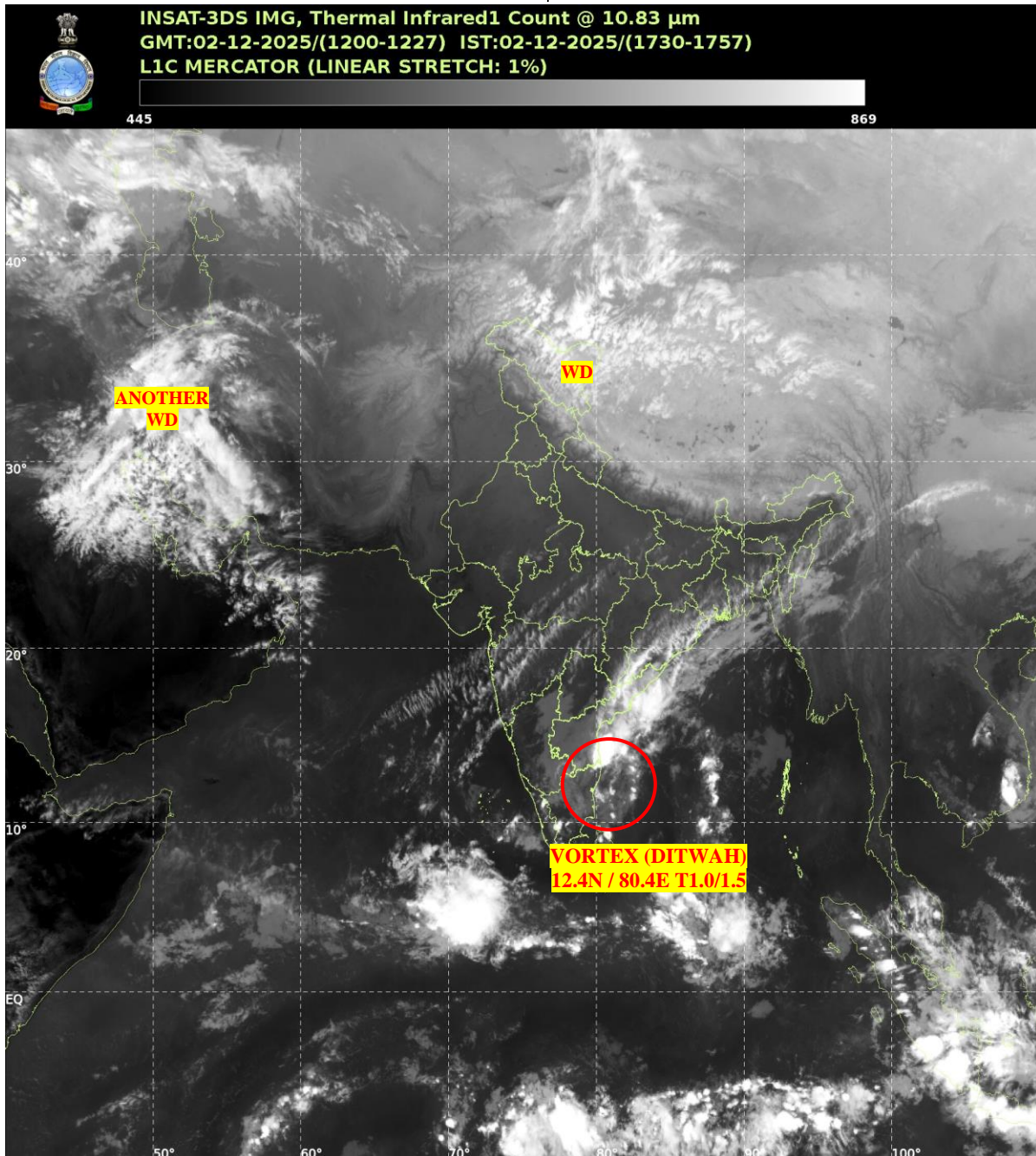




**SATELLITE BULLETIN BASED ON SATELLITE
IMAGERIES AND PRODUCTS**
02.12.2025 TIME 1200 UTC



TCIN50 DEMS 021200

SATELLITE BULLETIN BASED ON INSAT-3DS PIC OF 021200 UTC (.)

REGION COVERED BETWEEN LAT 50.0°N TO 35.0°S AND LONG 40.0°E TO 125.0°E (.)

SALIENT FEATURES:-

VORTEX (DITWAH) OVER SOUTH-WEST BAY ADJ NORTH TAMIL NADU-PUDUCHERRY COASTS & N/HOOD:-

VORTEX (**DITWAH**) OVER SW BAY ADJ NORTH TAMILNADU-PUDUCHERRY COASTS & N/HOOD CENTERED NEAR **12.4N / 80.4E** (.) INTENSITY **T1.0/1.5** (.) ASSTD SCT TO BKN LOW/MED CLOUDS WITH EMBDD INTENSE TO VERY INTENSE CONVECTION OVER WC BAY COTL AP ADJ N COTL TN (MINIMUM **CTT MINUS 70-90 DEG CEL**) AND MODERATE TO INTENSE CONVECTION OVER ORS SW BAY OFF NORTH TN COAST (MINIMUM **CTT MINUS 50-60 DEG CEL**) (.)

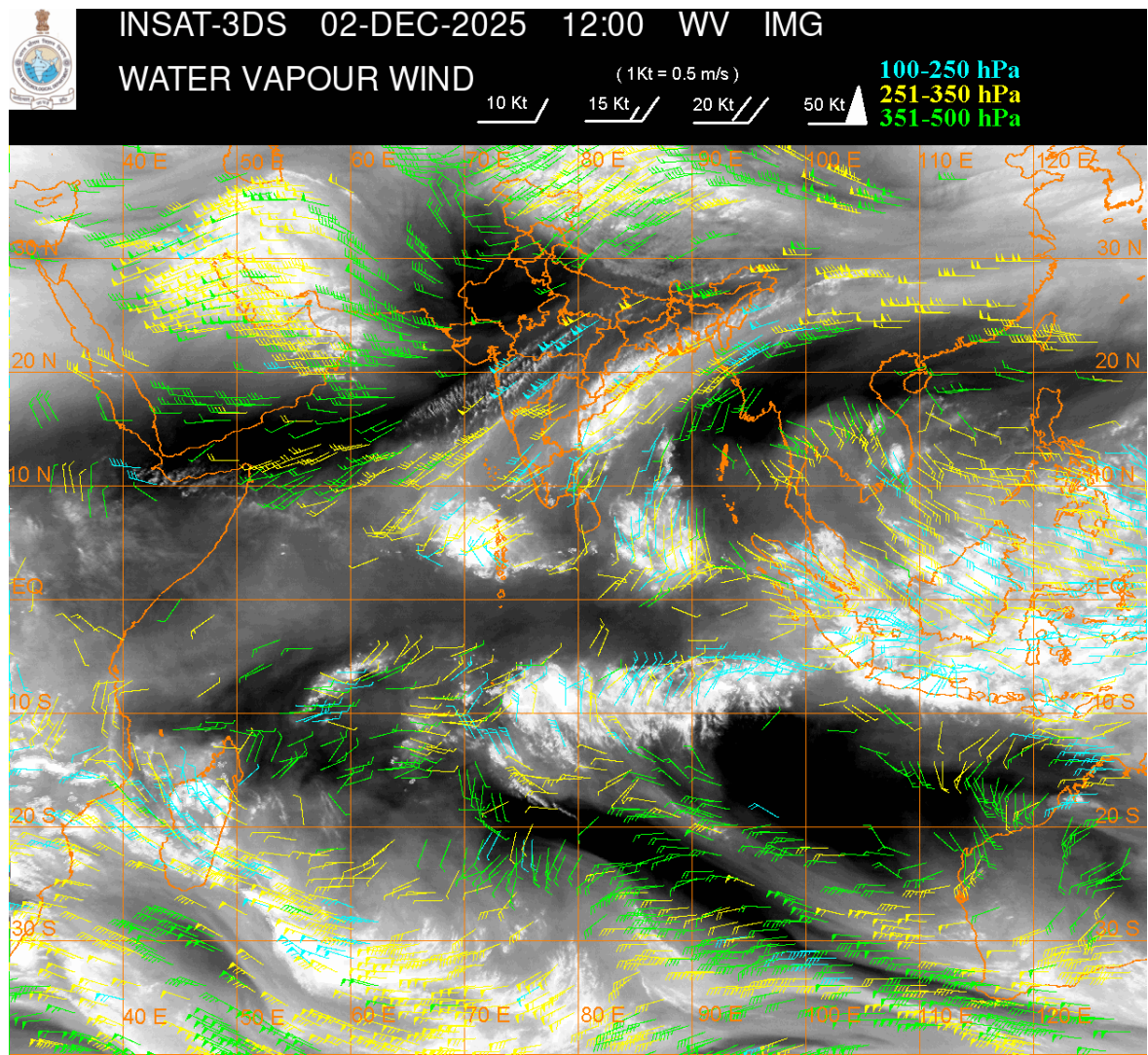
CONVECTIVE / THUNDERSTORM ACTIVITY:-

INTENSE TO VERY INTENSE CONVECTIVE CLOUDS / THUNDERSTORM ACTIVITY OBSERVED OVER COTL AP ADJ N COTL TN (MINIMUM **CTT MINUS 60-80 DEG CEL**) (.) MODERATE TO INTENSE CONVECTIVE CLOUDS / THUNDERSTORM ACTIVITY OBSERVED OVER LADAKH ORS KER S TN (MINIMUM **CTT MINUS 40-60 DEG CEL**) (.)

WESTERN DISTURBANCE (WD):-

SCT MULTILAYERED CLOUDS OVER LADAKH J&K HP N UTRKND TIBET ADJ CHINA IN ASSW **WD** OVER THE AREA (.)

SCT MULTILAYERED CLOUDS OVER IRAN AND N/HOOD IN ASSW **ANOTHER WD** OVER THE AREA (.)



CLOUDS DESCRIPTION WITHIN INDIA:-

NORTH:-

SCT TO BKN LOW/MED CLOUDS WITH EMBDD MOD TO INT CONVTN OVER LADAKH (.) SCT LOW/MED CLOUDS WITH EMBDD ISOL WK TO MOD CONVTN OVER J&K N HP N UTRKND (.) ISOL TO SCT LOW/MED CLOUDS OVER S HP S UTRKND SE UP (.)

EAST:-

SCT LOW/MED CLOUDS WITH EMBDD MOD TO INT CONVTN OVER ORS AND WK TO MOD CONVTN OVER S CHTGH GWB SKM NE STATES (.) ISOL TO SCT LOW/MED CLOUDS OVER BHR JHRKND N SHWB (.)

WEST:-

SCT LOW/MED CLOUDS WITH EMBDD ISOL WK TO MOD CONVTN OVER E MP MAHA (.) SCT LOW/MED CLOUDS OVER E RAJ W MP & GOA (.)

SOUTH:-

SCT TO BKN LOW/MED CLOUDS WITH EMBDD INT TO V INT CONVTN OVER COTL AP ADJ N COTL TN (.) SCT LOW/MED CLOUDS WITH EMBDD MOD TO INT CONVTN OVER KER S TN AND ISOL WK TO MOD CONVTN OVER TLNGN RYLSM KRNTK REST N TN & LKSDP ILS (.) SCT LOW/MED CLOUDS OVER ANDAMAN & NICOBAR ILS (.)

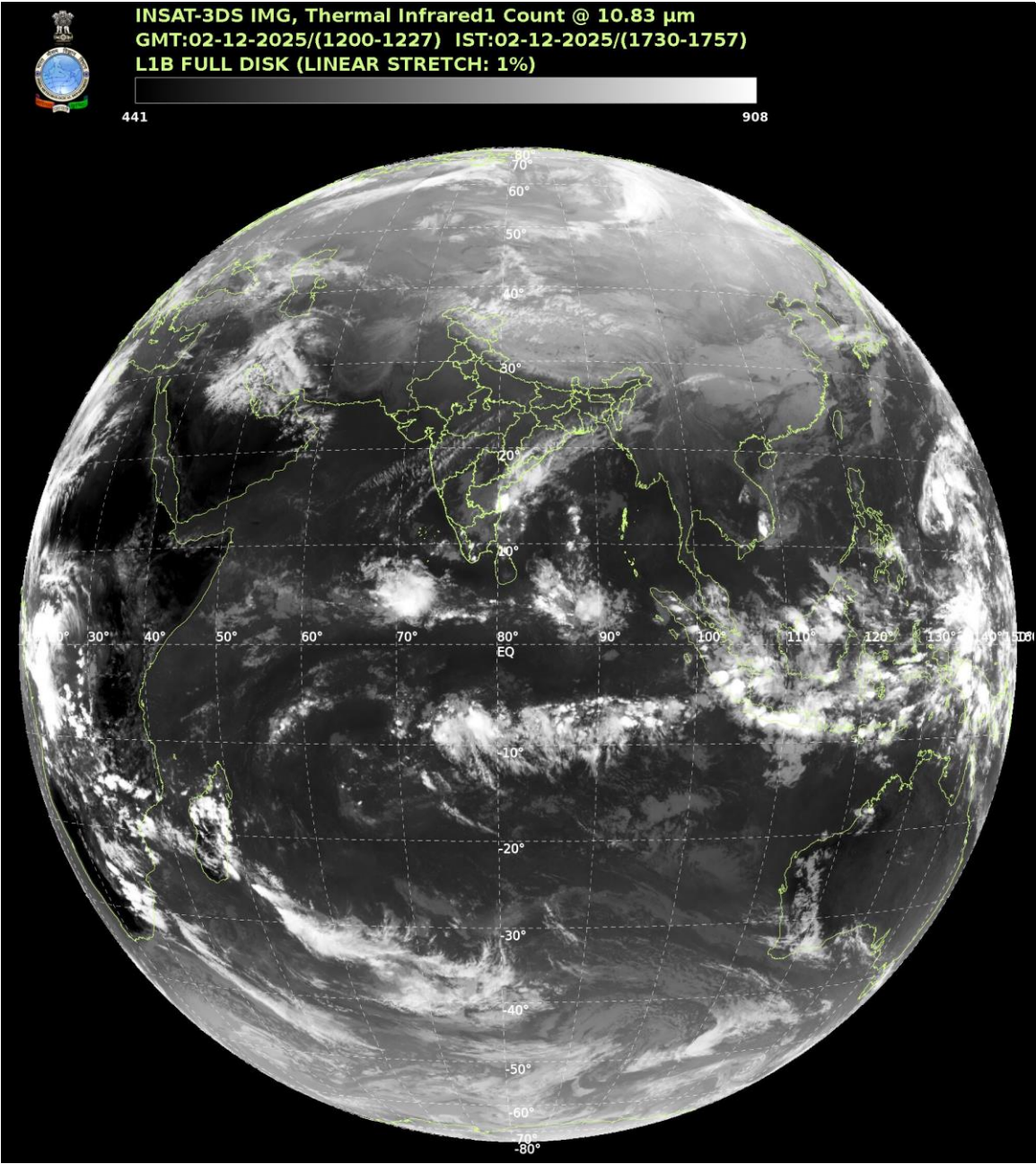
ARABIAN SEA:-

SCT TO BKN LOW/MED CLOUDS WITH EMBDD MOD TO INT CONVTN OVER SE ARSEA & MALDIVES AREA (.) SCT LOW/MED CLOUDS WITH EMBDD WK TO MOD CONVTN OVER SW & EC ARSEA (.)

BAY OF BENGAL & ANDAMAN SEA:-

SCT TO BKN LOW/MED CLOUDS WITH EMBDD INT TO V INT CONVTN OVER WC BAY (.) SCT LOW/MED CLOUDS WITH EMBDD MOD TO INT CONVTN OVER REST BAY (.)

CLOUDS DESCRIPTION OUTSIDE INDIA:-



SCT LOW/MED CLOUDS WITH EMBDD MOD TO INT CONVTN OVER MALDIVES TIBET CHINA YELLOW SEA NORTH MYANMAR SUMATRA STR OF MALACCA MALAYSIA BORNEO SOUTH CHINA SEA JAVA ILS & SEA CELEBES ILS & SEA PHILIPPINES SULU SEA MADAGASCAR MOZAMBIQUE CHANNEL AND OVER INDIAN OCEAN BET LAT 5.0N TO 17.0S LONG 50.0E TO 110.0E (.)

TOO 02/1850HRS IST=

NNNN

LEGEND:-

REGION	NORTH	J&K HP UTRKND PJB HARY DLH UP
	EAST	BHR JHRKND CHTGH ORS WB SKM NORTH-EAST STATES
	WEST	RAJ MP GUJ MAHA GOA
	SOUTH	TLNGN AP KRNTK KER TN LKSDP ANDAMAN & NICOBAR ILS

CLOUD DISTRIBUTION	ISOL	ISOLATED (LESS THAN 25%)
	SCT	SCATTERED (25 TO 50%)
	BKN	BROKEN (51 TO 75%)
	SLD	SOLID (GREATER THAN 75%)
CLOUDS TOP TEMPERATURE	CTT	CLOUD TOP TEMPERATURE
CONVECTION	WK CONVTN	WEAK CONVECTION (CTT GREATER THAN –25°C)
	MOD CONVTN	MODERATE CONVECTION (CTT BETWEEN -25°C TO -40°C)
	INT CONVTN	INTENSE CONVECTION (CTT BETWEEN -41°C TO -70°C)
	V INT CONVTN	VERY INTENSE CONVECTION (CTT LESS THAN -70°C)
METEOROLOGICAL SUB- DIVISIONS, STATES & UNION TERRITORIES	J&K	JAMMU AND KASHMIR
	HP	HIMACHAL PRADESH
	UTRKND	UTTARAKHAND
	PJB	PUNJAB
	HARY	HARYANA
	DLH	DELHI
	BHR	BIHAR
	JHRKND	JHARKHAND
	CHTGH	CHHATTISGARH
	ORS	ODISHA
	GWB	GANGETIC WEST BENGAL
	SHWB	SUB-HIMALAYAN WEST BENGAL
	SKM	SIKKIM
	ARUPR	ARUNACHAL PRADESH
	ASSAM	ASSAM
	MEGHA	MEGHALAYA
	NAGA	NAGALAND
	MANI	MANIPUR
	MIZO	MIZORAM
	TRP	TRIPURA
	RAJ	RAJASTHAN
	MP	MADHYA PRADESH
	GUJ	GUJARAT
	SAU & KUTCH	SAURASHTRA & KUTCH
	MAHA	MAHARASHTRA
	M MAHA	MADHYA MAHARASHTRA
	MRTHWD	MARATHWADA
	VID	VIDARBHA
	KKN	KONKAN
	TLNGN	TELANGANA
	RYLSM	RAYALASEEMA
	COTL AP	COASTAL ANDHRA PRADESH
	NIK	NORTH INTERIOR KARNATAKA
	SIK	SOUTH INTERIOR KARNATAKA
	COTL KRNTK	COASTAL KARNATAKA

	KER	KERALA
	TN	TAMILNADU
	LKSDP	LAKSHADWEEP
	ILS	ISLANDS
	ARSEA	ARABIAN SEA
MISCELLANEOUS	ASSW	IN ASSOCIATION WITH
	ASSTD	ASSOCIATED
	LLC	LOW LEVEL CIRCULATION
	EMBDD	EMBEDDED
	N/HOOD	NEIGHBOURHOOD
	EXT	EXTREME