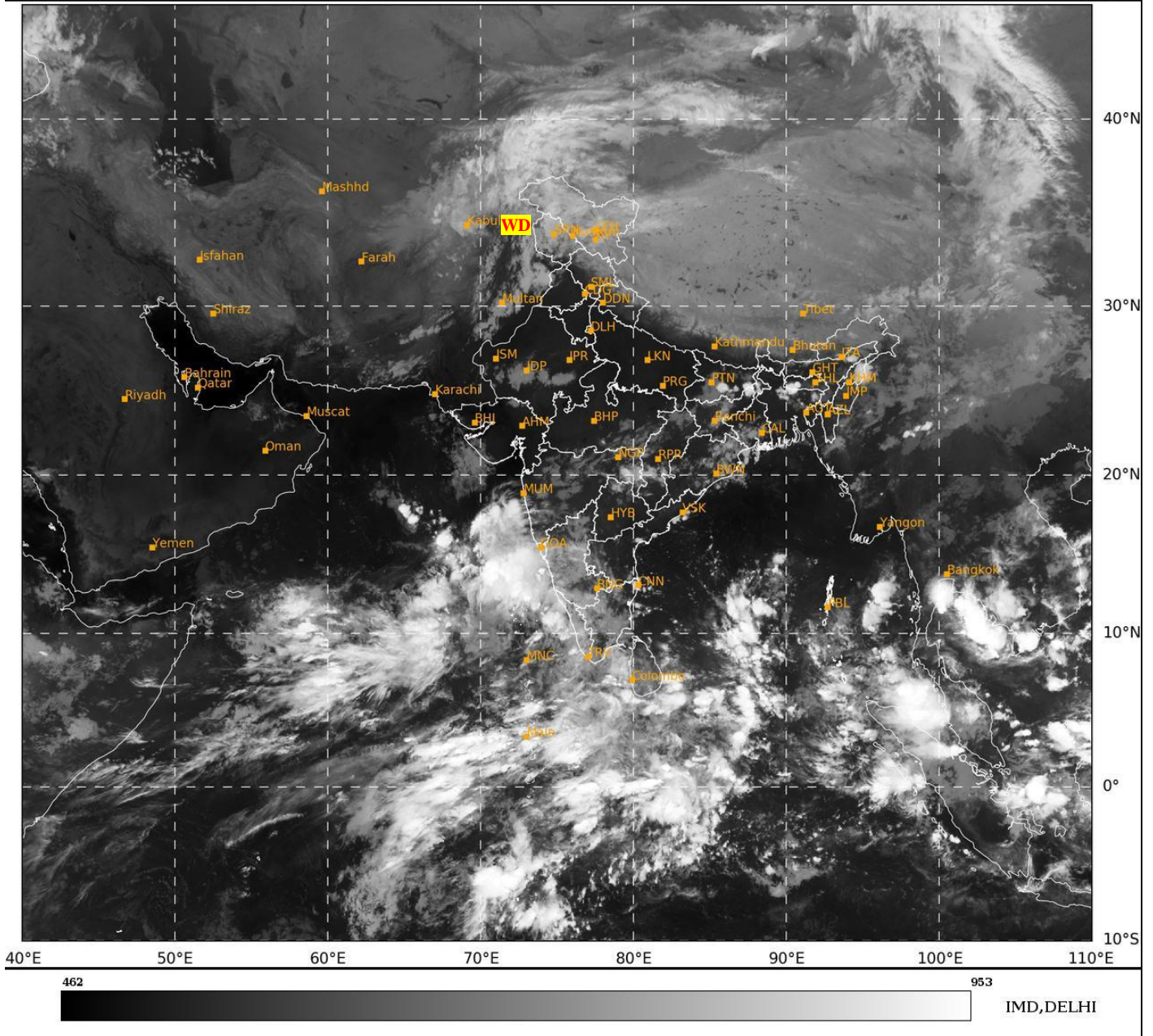




**SATELLITE BULLETIN BASED ON SATELLITE  
IMAGERIES AND PRODUCTS**  
**08.10.2024 TIME 0000 UTC**

SAT : INSAT-3DR IMG  
IMG\_TIR1 10.8 um  
LIC Mercator

08-10-2024/(0015 to 0042) GMT  
08-10-2024/(0545 to 0612) IST



TCIN50 DEMS 080000

SATELLITE BULLETIN BASED ON INSAT-3DR PIC OF 080015 UTC (.)

REGION COVERED BETWEEN LAT 50.0°N TO 35.0°S AND LONG 40.0°E TO 125.0°E (.)

**SALIENT FEATURES:-**

**WESTERN DISTURBANCE (WD):-**

SCT MULTILAYERED CLOUDS OVER E AFGAN PAK LADAKH J&K N PJB AND N/HOOD IN ASSW **WD** OVER THE AREA (.)

**CONVECTIVE / THUNDERSTORM ACTIVITY:-**

INTENSE TO VERY INTENSE CONVECTIVE / THUNDERSTORM ACTIVITY OBSERVED OVER LKSDP ILS AREA (MINIMUM **CTT MINUS 70-90 DEG CEL**) (.)

MODERATE TO INTENSE CONVECTIVE / THUNDERSTORM ACTIVITY OBSERVED OVER E BHR MEGHA NE ASSAM NAGA BD KKN NE TN N KER COTL KRNTK CENTRAL COTL AP & NICOBAR ILS (MINIMUM **CTT MINUS 50-65 DEG CEL**) (.)





INSAT-3DR 08-OCT-2024 00:15 WV IMG

WATER VAPOUR WIND

(1Kt = 0.5 m/s)

10 Kt

15 Kt

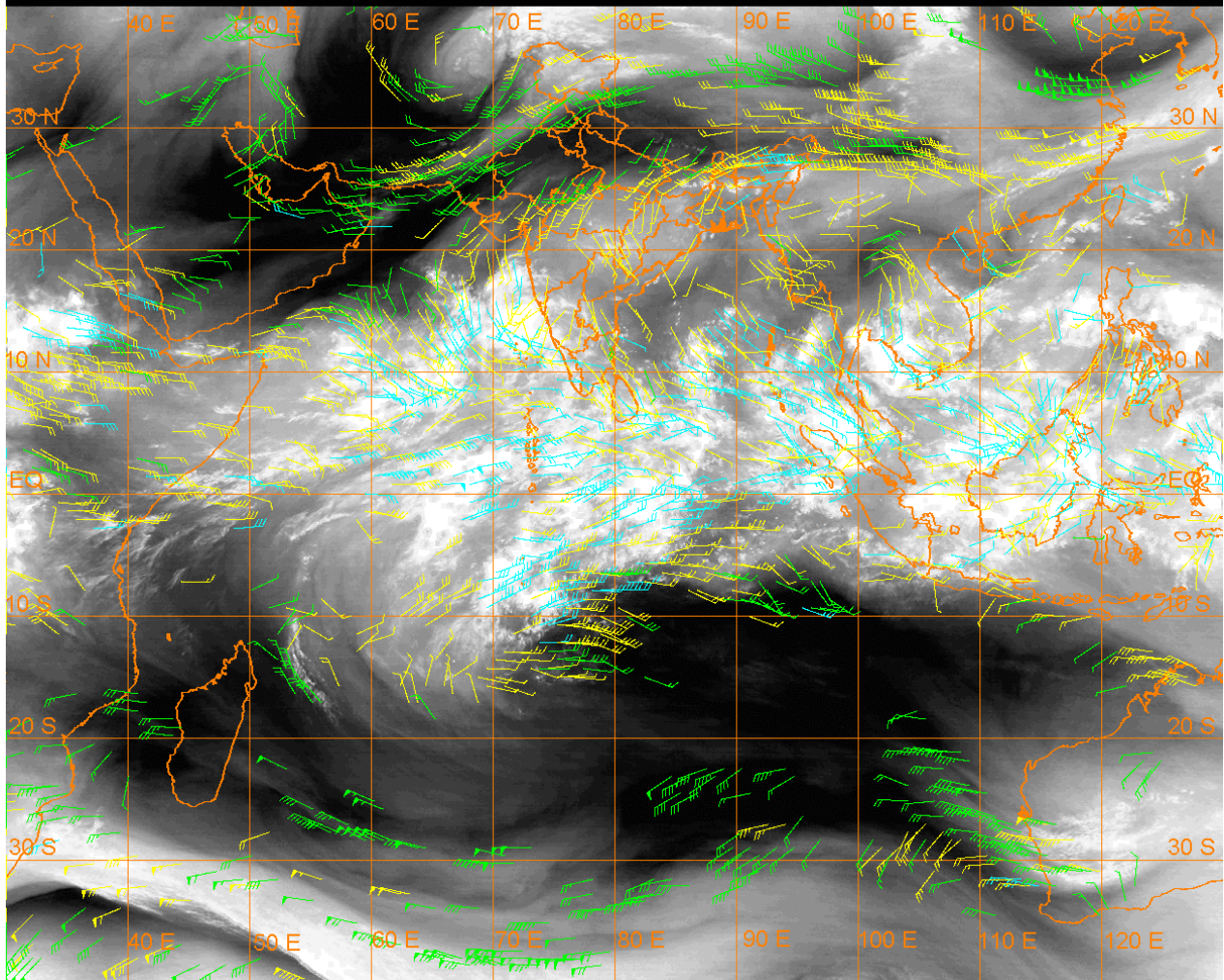
20 Kt

50 Kt

100-250 hPa

251-350 hPa

351-500 hPa



**CLOUDS DESCRIPTION WITHIN INDIA:-**

**NORTH:-**

SCT LOW/MED CLOUDS WITH EMBDD WK TO MOD CONVTN OVER LADAKH J&K N PJB N HP (.) ISOL TO SCT LOW/MED CLOUDS OVER S HP UTRKND UP (.)

**EAST:-**

SCT LOW/MED CLOUDS WITH EMBDD MOD TO INT CONVTN OVER E BHR MEGHA NE ASSAM NAGA BD AND WK TO MOD CONVTN OVER W BHR JHRKND CHTGH ORS GWB SHWB SKM REST NE STATES (.)

**WEST:-**

SCT LOW/MED CLOUDS WITH EMBDD MOD TO INT CONVTN OVER KKN AND WK CONVTN OVER RAJ MP GUJ REST MAHA GOA (.)

**SOUTH:-**

SCT LOW/MED CLOUDS WITH EMBDD INT TO V INT CONVTN OVER LKSDP ILS (.) SCT LOW/MED CLOUDS WITH EMBDD MOD TO INT CONVTN OVER NE TN N KER COTL KRNTK CENTRAL COTL AP & NICOBAR ILS AND WK TO MOD CONVTN OVER REST KRNTK TLNGN RYLSM REST COTL AP S KER REST TN ANDAMAN ILS (.)

**ARABIAN SEA:-**

SCT TO BKN LOW/MED CLOUDS WITH EMBDD INT TO V INT CONVTN OVER SOUTH ARSEA EC ARSEA MALDIVES & COMORIN AREA LKSDP ILS AREA (MINIMUM **CTT MINUS 75-93 DEG CEL**) (.) SCT LOW/MED CLOUDS WITH EMBDD MOD TO INT CONVTN OVER SOUTH PARTS OF WC ARSEA AND WK CONVTN OVER REST ARSEA (.)

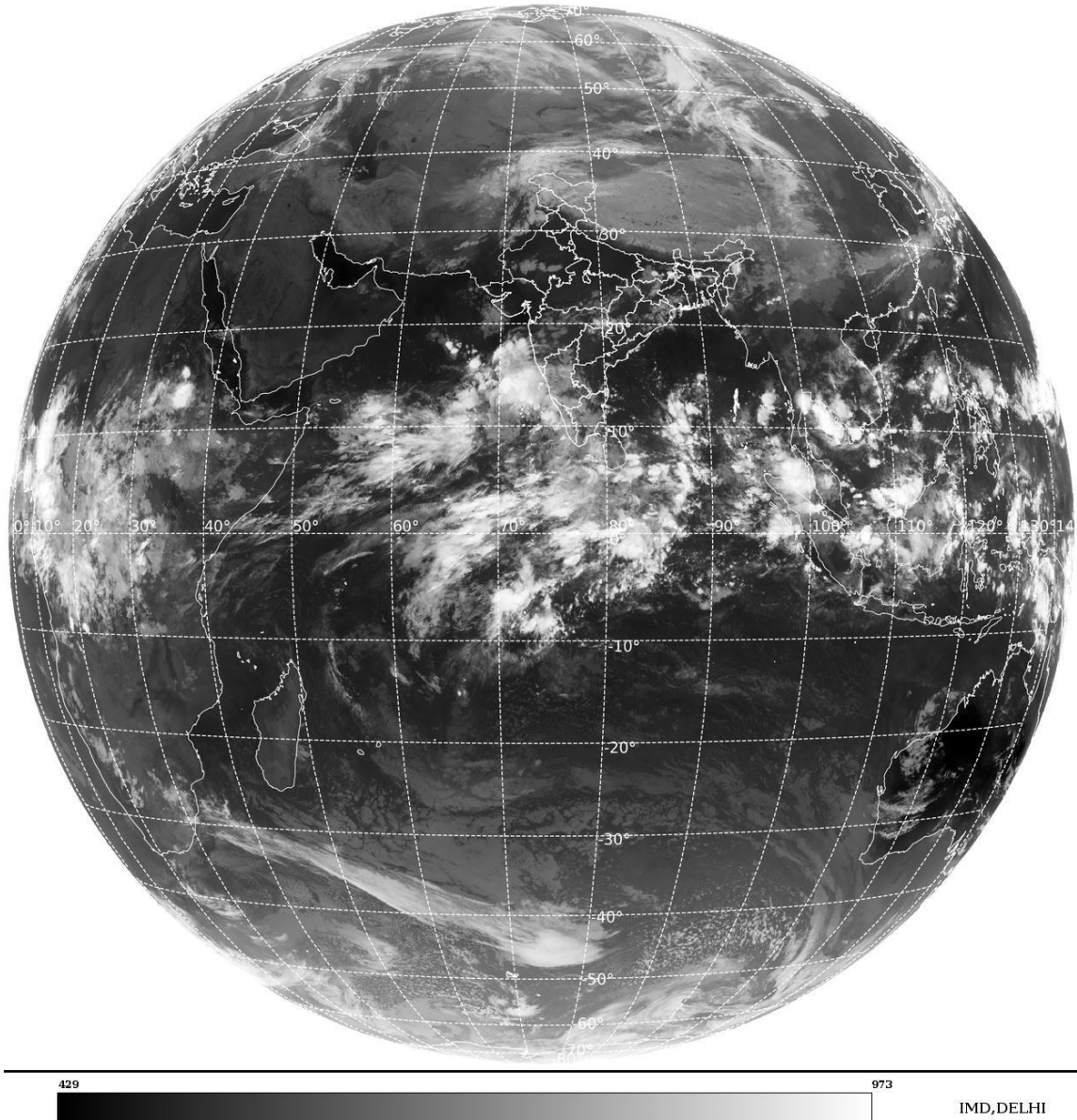
**BAY OF BENGAL & ANDAMAN SEA:-**

SCT LOW/MED CLOUDS WITH EMBDD INT TO V INT CONVTN OVER SOUTH BAY EC BAY AND ANDAMAN SEA (MINIMUM **CTT MINUS 75-90 DEG CEL**) (.) SCT LOW/MED CLOUDS WITH EMBDD ISOL MOD TO INT CONVTN OVER WC BAY AND WK TO MOD CONVTN OVER N BAY (.)

**CLOUDS DESCRIPTION OUTSIDE INDIA:-**

SAT : INSAT-3DR IMG  
Thermal Infrared1 Count 10.8 um  
L1B FULL DISK

08-10-2024/(0015 to 0042) GMT  
08-10-2024/(0545 to 0612) IST



**SCT LOW/MED CLOUDS WITH EMBDD MOD TO INT CONVTN OVER SRI LANKA PALK STR GULF OF MANNAR MALDIVES PAK TIBET CHINA EAST CHINA SEA TAIWAN MYANMAR THAILAND GULF OF THAILAND LAOS CAMBODIA VIETNAM GULF OF TONKIN SUMATRA STR OF MALACCA MALAYSIA BORNEO SOUTH CHINA SEA JAVA ILS & SEA CELEBES ILS & SEA PHILIPPINES SULU SEA AND OVER INDIAN OCEAN BET LAT 5.0N TO 10.0S LONG 50.0E TO 100.0E (.)**

**TOO 08/0650 HRS IST=**

**NNNN**

**LEGEND:-**

|               |              |  |
|---------------|--------------|--|
| <b>REGION</b> | <b>NORTH</b> | <b>J&amp;K HP PJB HARY DLH UP UTRKND</b>                     |
|               | <b>EAST</b>  | <b>BHR JHRKND CHTGH ORS WB SKM NORTH- EAST STATES</b>        |
|               | <b>WEST</b>  | <b>RAJ MP GUJ MAHA GOA</b>                                   |
|               | <b>SOUTH</b> | <b>TLNGN AP KRNTK KER TN LKSDP ANDAMAN &amp; NICOBAR ILS</b> |

|  |                     |   |                   |
|--|---------------------|---|-------------------|
| <b>CLOUD DISTRIBUTION</b>  | <b>ISOL</b>         | <b>ISOLATED (LESS THAN 25%)</b>                         |                   |
|  | <b>SCT</b>          | <b>SCATTERED (25 TO 50%)</b>                            |                   |
|  | <b>BKN</b>          | <b>BROKEN (51 TO 75%)</b>                               |                   |
|  | <b>SLD</b>          | <b>SOLID (GREATER THAN 75%)</b>                         |                   |
| <b>CLOUDS TOP TEMPERATURE</b>  | <b>CTT</b>          | <b>CLOUD TOP TEMPERATURE</b>                            |                   |
| <b>CONVECTION</b>  | <b>WK CONVTN</b>    | <b>WEAK CONVECTION (CTT GREATER THAN -25°C)</b>         |                   |
|  | <b>MOD CONVTN</b>   | <b>MODERATE CONVECTION (CTT BETWEEN -25°C TO -40°C)</b> |                   |
|  | <b>INT CONVTN</b>   | <b>INTENSE CONVECTION (CTT BETWEEN -41°C TO -70°C)</b>  |                   |
|  | <b>V INT CONVTN</b> | <b>VERY INTENSE CONVECTION (CTT LESS THAN -70°C)</b>    |                   |
| <b>METEOROLOGICAL SUB- DIVISIONS, STATES &amp; UNION TERRITORIES</b> | <b>ARUPR</b>        | <b>ARUNACHAL PRADESH</b>                                |                   |
|  | <b>BHR</b>          | <b>BIHAR</b>  |                   |
|  | <b>CHTGH</b>        | <b>CHHATTISGARH</b>                                     |                   |
|  | <b>COTL AP</b>      | <b>COASTAL ANDHRA PRADESH</b>                           |                   |
|  | <b>COTL KRNTK</b>   | <b>COASTAL KARNATAKA</b>                                |                   |
|  | <b>COTL ORS</b>     | <b>COASTAL ORISSA</b>                                   |                   |
|  | <b>GUJ</b>          | <b>GUJARAT</b>  |                   |
|  | <b>GWB</b>          | <b>GANGETIC WEST BENGAL</b>                             |                   |
|  | <b>HARY</b>         | <b>HARYANA</b>  |                   |
|  | <b>DLH</b>          | <b>DELHI</b>  |                   |
|  | <b>HP</b>           | <b>HIMACHAL PRADESH</b>                                 |                   |
|  | <b>J&amp;K</b>      | <b>JAMMU AND KASHMIR</b>                                |                   |
|  | <b>JHRKND</b>       | <b>JHARKHAND</b>  |                   |
|  | <b>KER</b>          | <b>KERALA</b>   |                   |
|  | <b>KKN</b>          | <b>KONKAN</b>   |                   |
|  | <b>LKSDP</b>        | <b>LAKSHADWEEP</b>                                      |                   |
|  | <b>M MAHA</b>       | <b>MADHYA MAHARASHTRA</b>                               |                   |
|  | <b>MAHA</b>         | <b>MAHARASHTRA</b>                                      |                   |
|  | <b>MANI</b>         | <b>MANIPUR</b>  |                   |
|  | <b>MEGHA</b>        | <b>MEGHALAYA</b>  |                   |
|  | <b>MIZO</b>         | <b>MIZORAM</b>  |                   |
|  | <b>MP</b>           | <b>MADHYA PRADESH</b>                                   |                   |
|  |                     | <b>MRTHWD</b>   | <b>MARATHWADA</b> |
|  |                     | <b>NAGA</b>   | <b>NAGALAND</b>   |
| <b>N COTL AP</b>   |                     | <b>NORTH COASTAL ANDHRA PRADESH</b>                     |                   |
| <b>NIK</b>   |                     | <b>NORTH INTERIOR KARNATAKA</b>                         |                   |
| <b>ORS</b>   |                     | <b>ORISSA</b>   |                   |
| <b>PJB</b>   |                     | <b>PUNJAB</b>   |                   |
| <b>RAJ</b>   |                     | <b>RAJASTHAN</b>  |                   |
| <b>RYLSM</b>   |                     | <b>RAYALASEEMA</b>                                      |                   |
| <b>SAU &amp; KUTCH</b>   |                     | <b>SAURASHTRA &amp; KUTCH</b>                           |                   |
| <b>SHWB</b>  |                     | <b>SUB-HIMALAYAN WEST BENGAL</b>                        |                   |
| <b>SIK</b>   |                     | <b>SOUTH INTERIOR KARNATAKA</b>                         |                   |
| <b>SKM</b>   |                     | <b>SIKKIM</b>   |                   |

|                      |               |                                  |
|----------------------|---------------|----------------------------------|
|                      | <b>TLNGN</b>  | <b>TELANGANA</b>                 |
|                      | <b>TN</b>     | <b>TAMIL NADU</b>                |
|                      | <b>TRP</b>    | <b>TRIPURA</b>                   |
|                      | <b>UP</b>     | <b>UTTAR PRADESH</b>             |
|                      | <b>UTRKND</b> | <b>UTTARAKHAND</b>               |
|                      | <b>VID</b>    | <b>VIDHARBHA</b>                 |
|                      | <b>SHWB</b>   | <b>SUB HIMALAYAN WEST BENGAL</b> |
|                      | <b>GWB</b>    | <b>GANGETIC WEST BENGAL</b>      |
|                      | <b>ARSEA</b>  | <b>ARABIAN SEA</b>               |
|                      | <b>ILS</b>    | <b>ISLANDS</b>                   |
| <b>MISCELLANEOUS</b> | <b>ASSW</b>   | <b>IN ASSOCIATION WITH</b>       |
|                      | <b>ASSTD</b>  | <b>ASSOCIATED</b>                |
|                      | <b>LLC</b>    | <b>LOW LEVEL CIRCULATION</b>     |
|                      | <b>EMBDD</b>  | <b>EMBEDDED</b>                  |
|                      | <b>N/HOOD</b> | <b>NEIGHBOURHOOD</b>             |
|                      | <b>EXT</b>    | <b>EXTREME</b>                   |