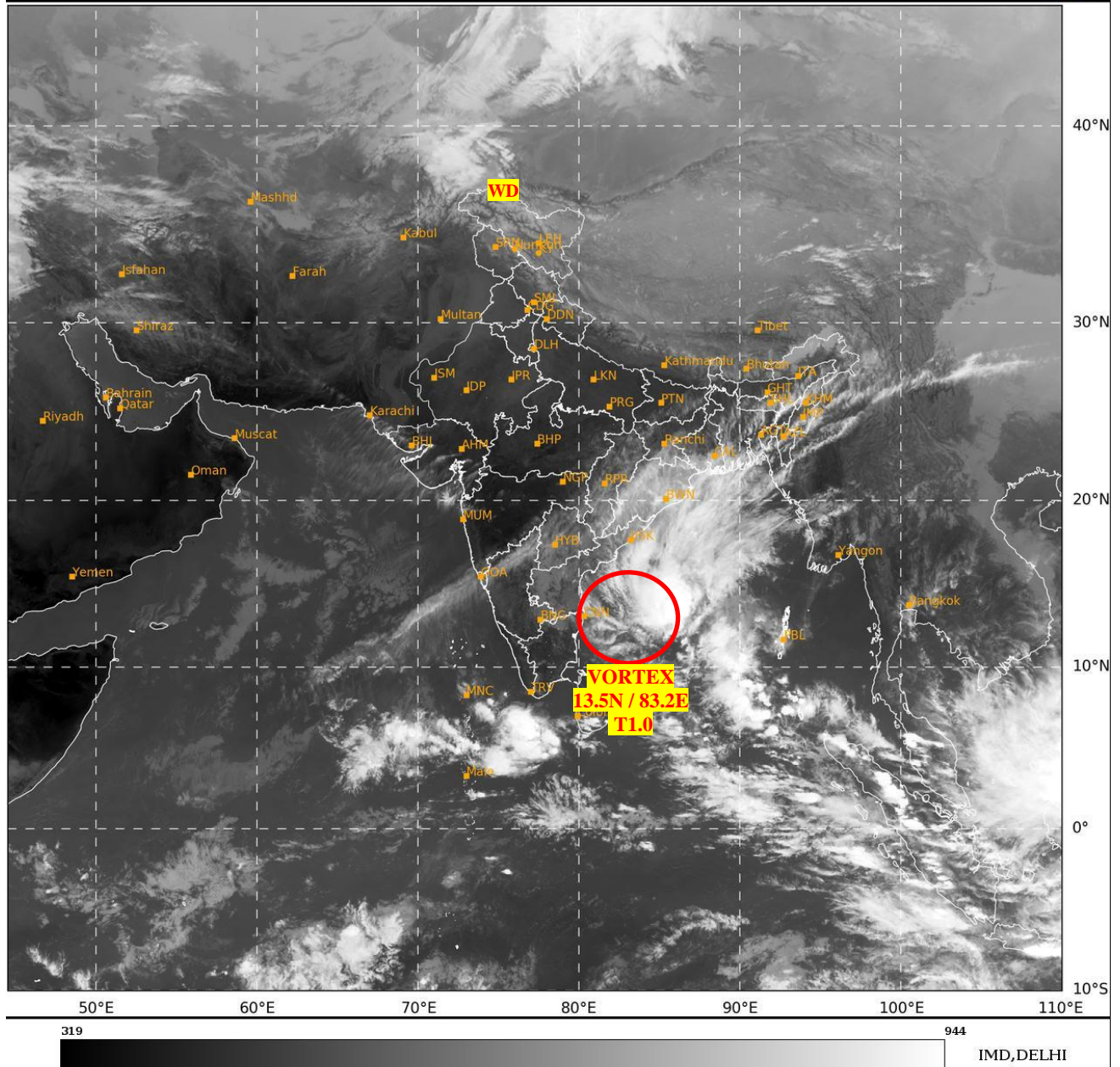




**SATELLITE BULLETIN BASED ON SATELLITE
IMAGERIES AND PRODUCTS**
20.12.2024 TIME 0900 UTC

SAT : INSAT-3DR IMG
IMG_TIR1 10.8 um
LIC Mercator

20-12-2024/(0845 to 0912) GMT
20-12-2024/(1415 to 1442) IST



TCIN50 DEMS 200900

SATELLITE BULLETIN BASED ON INSAT-3DR PIC OF 200845 UTC (.)

REGION COVERED BETWEEN LAT 50.0°N TO 35.0°S AND LONG 40.0°E TO 125.0°E (.)

SALIENT FEATURES:-

VORTEX OVER WEST CENTRAL ADJ SOUTH WEST BAY:-

VORTEX OVER WC ADJ SW BAY CENTERED **WITHIN HALF A DEGREE OF 13.5N / 83.2E** (.)
INTENSITY **T1.0** (.) ASSTD SCT TO BKN LOW/MED CLOUDS WITH EMBDD INT TO V INT
CONVTN OVER BAY BET LAT 11.0N TO 19.0N AND LONG 81.0E TO 91.0E (MINIMUM **CTT MINUS
80-90 DEG CEL**) AND MOD TO INT CONVTN OVER ORS COTL AP NE TN (.)

WESTERN DISTURBANCE:-

SCT MULTILAYERED CLOUDS OVER EXT N PAK J&K LADAKH & N/HOOD IN ASSW **WD** OVER
THE AREA (.)



INSAT-3DR 20-DEC-2024 08:45 WV IMG

WATER VAPOUR WIND

(1Kt = 0.5 m/s)

10 Kt

15 Kt

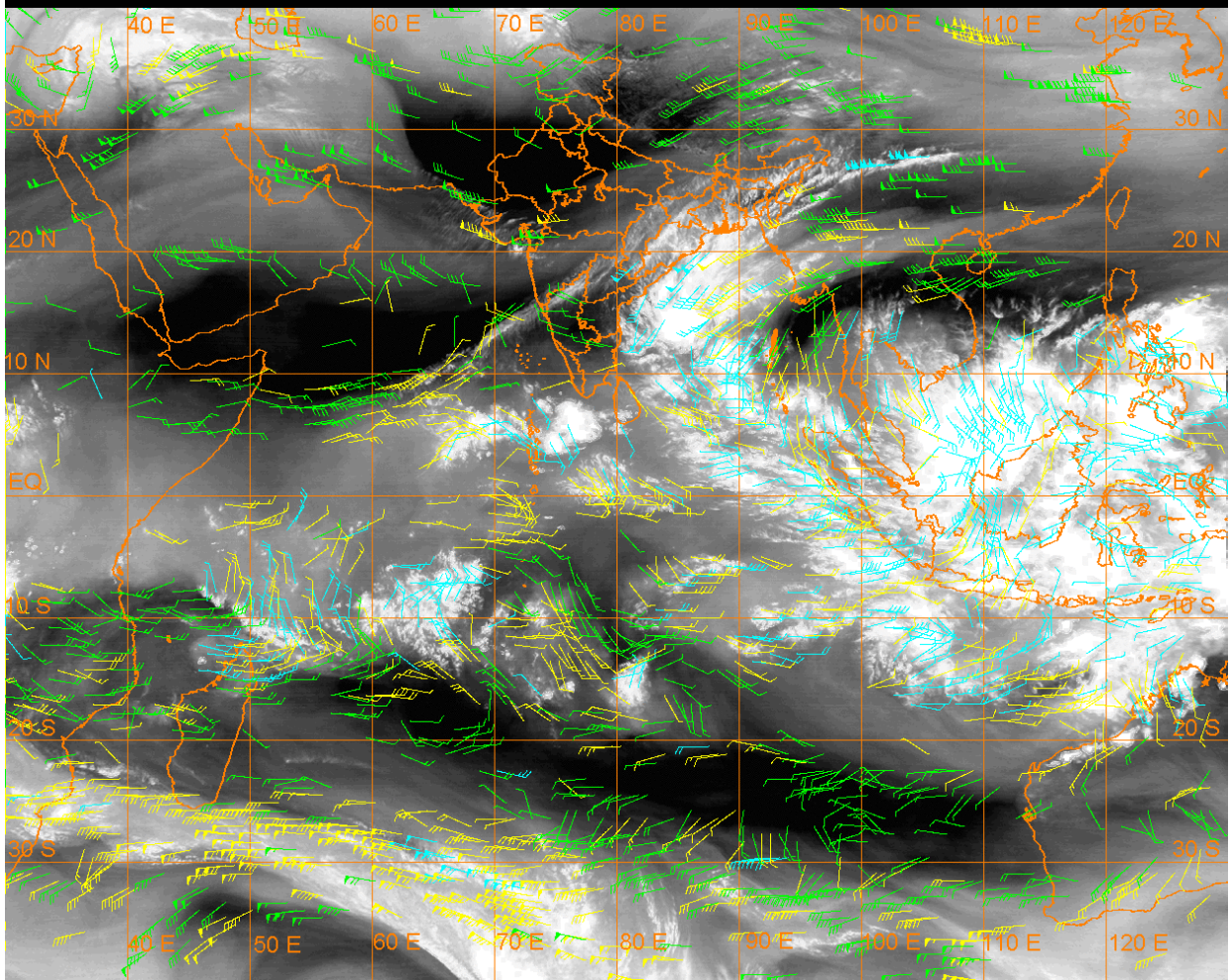
20 Kt

50 Kt

100-250 hPa

251-350 hPa

351-500 hPa



CLOUDS DESCRIPTION WITHIN INDIA:-

NORTH:-

SCT LOW/MED CLOUDS WITH EMBDD ISOL WK TO MOD CONVTN OVER LADAKH J&K N HP N UTRKND (.) ISOL LOW/MED CLOUDS OVER S HP S UTRKND (.)

EAST:-

SCT LOW/MED CLOUDS WITH EMBDD MOD TO INT CONVTN OVER ORS S GWB (.) SCT LOW/MED CLOUDS WITH EMBDD WK TO MOD CONVTN OVER N GWB JHRKND CHTGH SKM NAGA ADJ MANI S ASSAM TRP & BD (.) SCT LOW/MED CLOUDS OVER E BHR SHWB (.)

WEST:-

ISOL LOW/MED CLOUDS WITH EMBDD WK CONVTN OVER W GUJ MAHA GOA (.)

SOUTH:-

ISOL TO SCT LOW/MED CLOUDS WITH EMBDD MOD TO INT CONVTN OVER COTL AP NICOBAR ILS (.) SCT LOW/MED CLOUDS WITH EMBDD WK CONVTN OVER COTL TN (.) SCT LOW/MED CLOUDS OVER KRNTK TLNGN RYLSM KER REST TN LKSDP ILS ANDAMAN ILS (.)

ARABIAN SEA:-

SCT LOW/MED CLOUDS WITH EMBDD INT TO V INT CONVTN OVER SE ARSEA ADJ EQUATORIAL INDIAN OCEAN COMORIN AREA (MINIMUM **CTT MINUS 70-75 DEG CEL**) (.) SCT LOW/MED CLOUDS WITH EMBDD MOD TO INT CONVTN OVER MALDIVES AND ISOL WK TO MOD CONVTN OVER REST ARSEA (.)

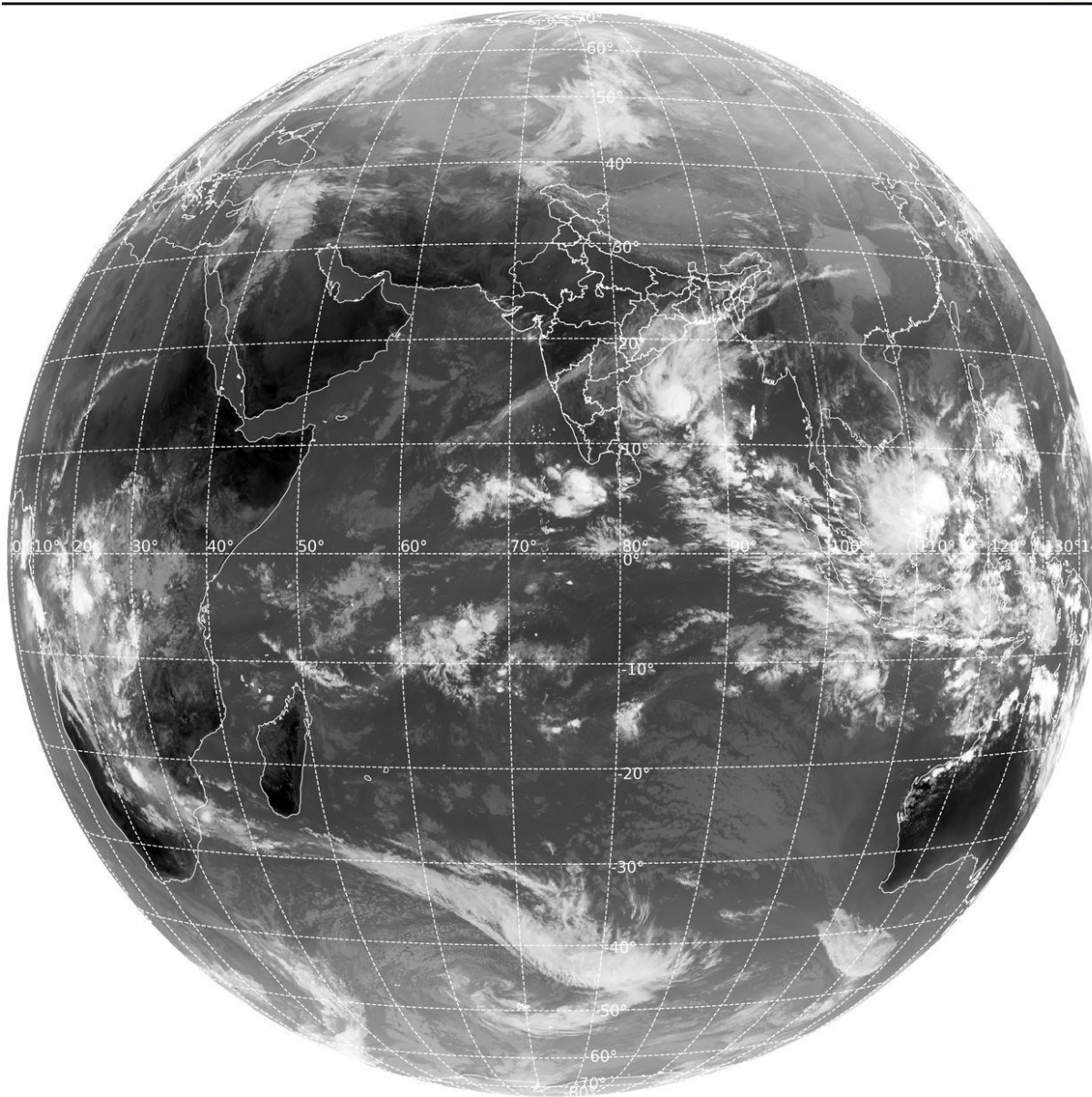
BAY OF BENGAL & ANDAMAN SEA:-

SCT TO BKN LOW/MED CLOUDS WITH EMBDD INT TO V INT CONVTN OVER WC ADJ EC & SOUTH BAY SOUTH ANDAMAN SEA (MINIMUM **CTT MINUS 70-80 DEG CEL**) (.) SCT LOW/MED CLOUDS WITH EMBDD MOD TO INT CONVTN OVER NORTH BAY (.)

CLOUDS DESCRIPTION OUTSIDE INDIA:-

SAT : INSAT-3DR IMG
 Thermal Infrared1 Count 10.8 um
 LIB FULL DISK

20-12-2024/(0845 to 0912) GMT
 20-12-2024/(1415 to 1442) IST



261

966



IMD, DELHI

SCT LOW/MED CLOUDS WITH EMBDD MOD TO INT CONV'TN OVER MALDIVES YELLOW SEA MYANMAR SOUTH THAILAND GULF OF THAILAND CAMBODIA VIETNAM SUMATRA STR OF MALACCA MALAYSIA BORNEO SOUTH CHINA SEA JAVA ILS & SEA CELEBES ILS & SEA PHILIPPINES SULU SEA NORTH MADAGASCAR MOZAMBIQUE CHANNEL AND OVER INDIAN OCEAN BET LAT 5.0N TO 20.0S LONG 40.0E TO 125.0E (.)

TOO 20/1555 EF=

NNNN

LEGEND:-

| | | |
|---------------------------|--------------|--|
| REGION | NORTH | J&K HP PJB HARY DLH UP UTRKND |
| | EAST | BHR JHRKND CHTGH ORS WB SKM NORTH- EAST STATES |
| | WEST | RAJ MP GUJ MAHA GOA |
| | SOUTH | TLNGN AP KRNTK KER TN LKSDP ANDAMAN & NICOBAR ILS |
| CLOUD DISTRIBUTION | ISOL | ISOLATED (LESS THAN 25%) |
| | SCT | SCATTERED (25 TO 50%) |
| | BKN | BROKEN (51 TO 75%) |

| | | | |
|--|------------------------|---|-------------------|
| | SLD | SOLID (GREATER THAN 75%) | |
| CLOUDS TOP TEMPERATURE | CTT | CLOUD TOP TEMPERATURE | |
| CONVECTION | WK CONVTN | WEAK CONVECTION (CTT GREATER THAN -25°C) | |
| | MOD CONVTN | MODERATE CONVECTION (CTT BETWEEN -25°C TO -40°C) | |
| | INT CONVTN | INTENSE CONVECTION (CTT BETWEEN -41°C TO -70°C) | |
| | V INT CONVTN | VERY INTENSE CONVECTION (CTT LESS THAN -70°C) | |
| METEOROLOGICAL SUB- DIVISIONS, STATES & UNION TERRITORIES | ARUPR | ARUNACHAL PRADESH | |
| | BHR | BIHAR | |
| | CHTGH | CHHATTISGARH | |
| | COTL AP | COASTAL ANDHRA PRADESH | |
| | COTL KRNTK | COASTAL KARNATAKA | |
| | COTL ORS | COASTAL ORISSA | |
| | GUJ | GUJARAT | |
| | GWB | GANGETIC WEST BENGAL | |
| | HARY | HARYANA | |
| | DLH | DELHI | |
| | HP | HIMACHAL PRADESH | |
| | J&K | JAMMU AND KASHMIR | |
| | JHRKND | JHARKHAND | |
| | KER | KERALA | |
| | KKN | KONKAN | |
| | LKSDP | LAKSHADWEEP | |
| | M MAHA | MADHYA MAHARASHTRA | |
| | MAHA | MAHARASHTRA | |
| | MANI | MANIPUR | |
| | MEGHA | MEGHALAYA | |
| | MIZO | MIZORAM | |
| | MP | MADHYA PRADESH | |
| | | MRTHWD | MARATHWADA |
| | | NAGA | NAGALAND |
| | N COTL AP | NORTH COASTAL ANDHRA PRADESH | |
| | NIK | NORTH INTERIOR KARNATAKA | |
| | ORS | ORISSA | |
| | PJB | PUNJAB | |
| | RAJ | RAJASTHAN | |
| | RYLSM | RAYALASEEMA | |
| | SAU & KUTCH | SAURASHTRA & KUTCH | |
| | SHWB | SUB-HIMALAYAN WEST BENGAL | |
| | SIK | SOUTH INTERIOR KARNATAKA | |
| | SKM | SIKKIM | |
| | TLNGN | TELANGANA | |
| | TN | TAMIL NADU | |
| | TRP | TRIPURA | |

| | | |
|----------------------|---------------|----------------------------------|
| | UP | UTTAR PRADESH |
| | UTRKND | UTTARAKHAND |
| | VID | VIDHARBHA |
| | SHWB | SUB HIMALAYAN WEST BENGAL |
| | GWB | GANGETIC WEST BENGAL |
| | ARSEA | ARABIAN SEA |
| | ILS | ISLANDS |
| MISCELLANEOUS | ASSW | IN ASSOCIATION WITH |
| | ASSTD | ASSOCIATED |
| | LLC | LOW LEVEL CIRCULATION |
| | EMBDD | EMBEDDED |
| | N/HOOD | NEIGHBOURHOOD |
| | EXT | EXTREME |