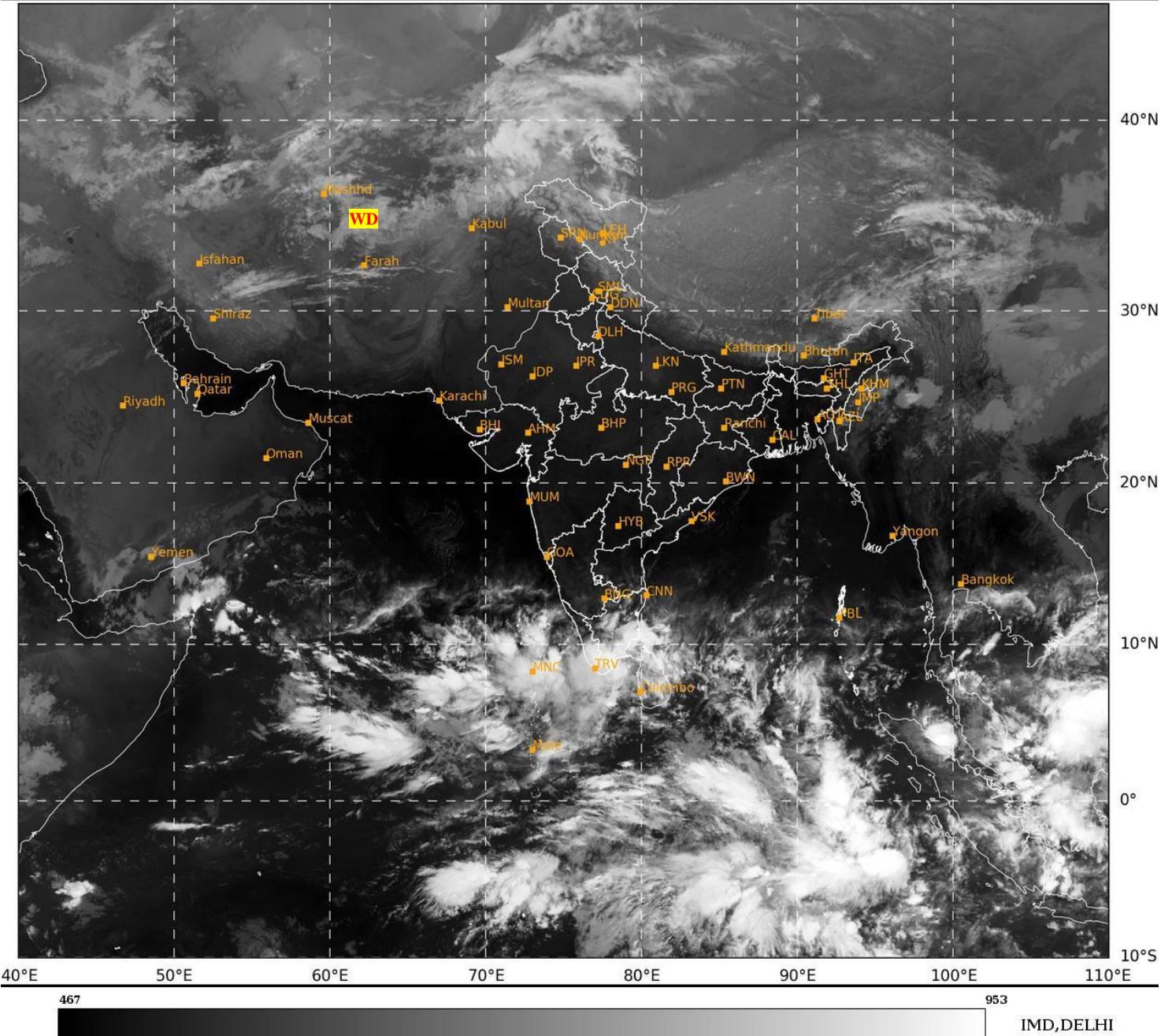




**SATELLITE BULLETIN BASED ON SATELLITE
IMAGERIES AND PRODUCTS**
20.11.2024 TIME 0300 UTC

SAT : INSAT-3DR IMG
IMG_TIR1 10.8 um
L1C Mercator

20-11-2024/(0315 to 0342) GMT
20-11-2024/(0845 to 0912) IST



TCIN50 DEMS 200300

SATELLITE BULLETIN BASED ON INSAT-3DR PIC OF 200315 UTC (.)

REGION COVERED BETWEEN LAT 50.0°N TO 35.0°S AND LONG 40.0°E TO 125.0°E (.)

SALIENT FEATURES:-

WESTERN DISTURBANCE:-

SCT MULTILAYERED CLOUDS OVER S CASPIAN SEA IRAN & N/HOOD IN ASSW **WD** OVER THE AREA (.)

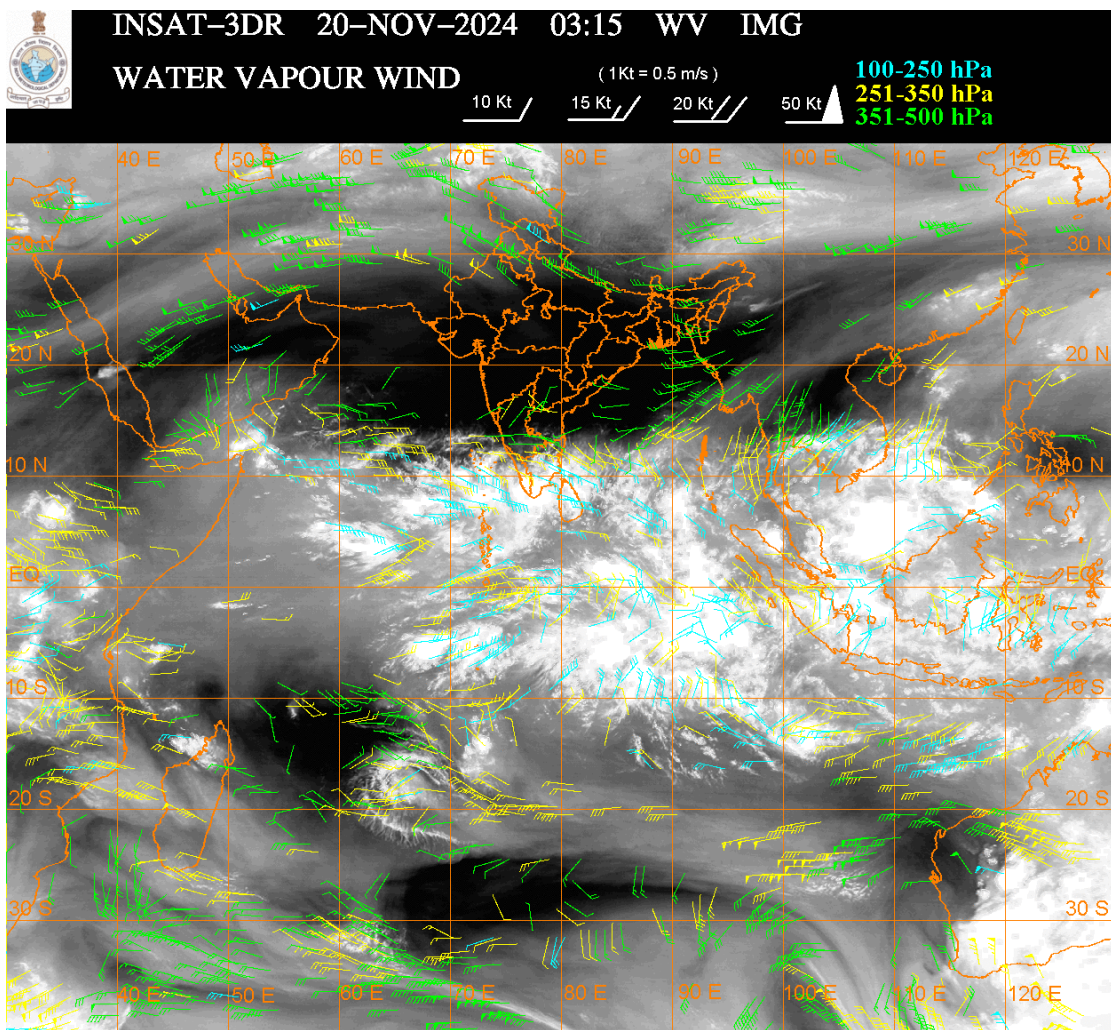
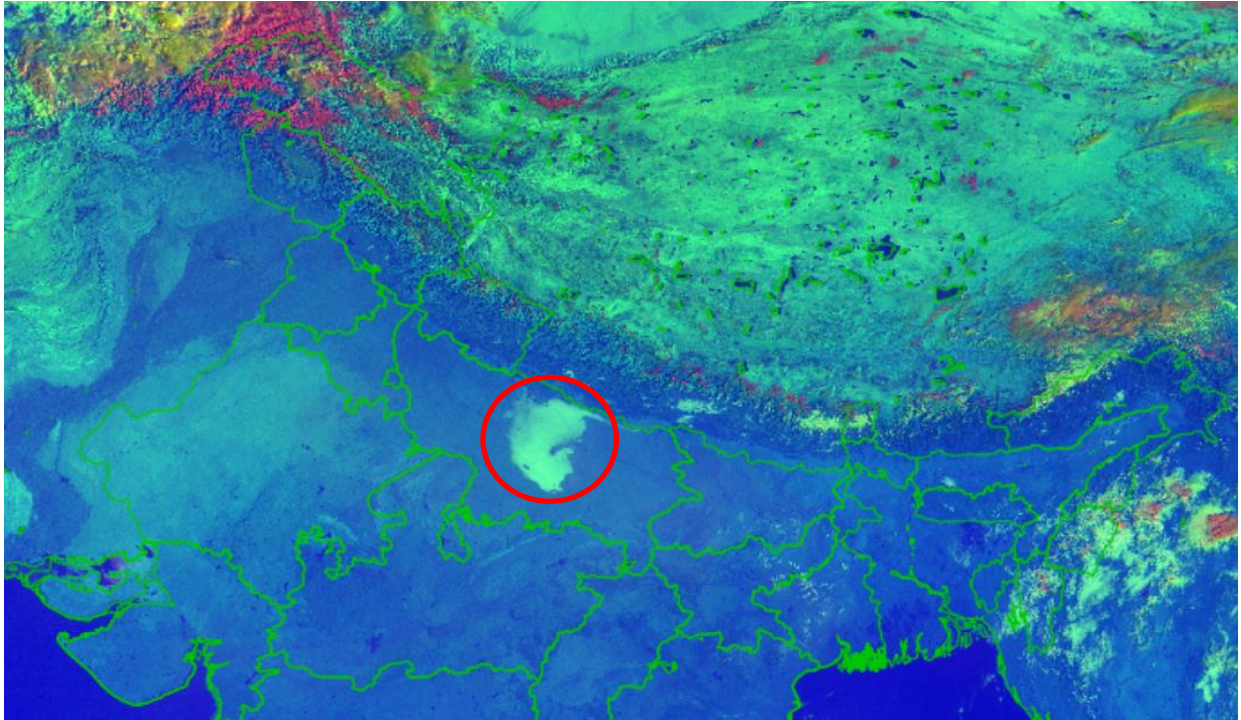
CONVECTIVE / THUNDERSTORM ACTIVITY:-

INTENSE TO VERY INTENSE CONVECTIVE / THUNDERSTORM ACTIVITY OBSERVED OVER S KER S TN LKSDP ILS (MINIMUM CTT **MINUS 75-85 DEG CEL**) (.)

MODERATE TO INTENSE CONVECTIVE / THUNDERSTORM ACTIVITY OBSERVED OVER N TN (MINIMUM CTT **MINUS 55-65 DEG CEL**) (.)

FOG / LOW CLOUDS:-

RGB COMPOSITE DAY MICROPHYSICS IMAGERY OF INSAT 3DR (RAPID) AT 0315 UTC SHOWS SCT FOG / LOW CLOUDS OVER CENTRAL PARTS OF UP (.)



CLOUDS DESCRIPTION WITHIN INDIA:-

NORTH:-

SCT LOW/MED CLOUDS WITH EMBDD ISOL WK TO MOD CONVTN OVER LADAKH (.) ISOL TO SCT LOW/MED CLOUDS OVER J&K HP UTRKND (.)

EAST:-

SCT LOW/MED CLOUDS WITH EMBDD ISOL WK CONVTN OVER SKM NE STATES (.) ISOL TO SCT LOW/MED CLOUDS OVER BHR JHRKND GWB SHWB (.)

WEST:-

NO SIGNIFICANT CLOUDS OVER THE REGION (.)

SOUTH:-

SCT LOW/MED CLOUDS WITH EMBDD INT TO V INT CONVTN OVER S KER S TN LKSDP ILS (.)
SCT LOW/MED CLOUDS WITH EMBDD MOD TO INT CONVTN OVER N TN AND ISOL WK TO
MOD CONVTN OVER N KER ANDAMAN & NICOBAR ILS (.) SCT LOW/MED CLOUDS OVER SIK
RYLSM COTL AP (.)

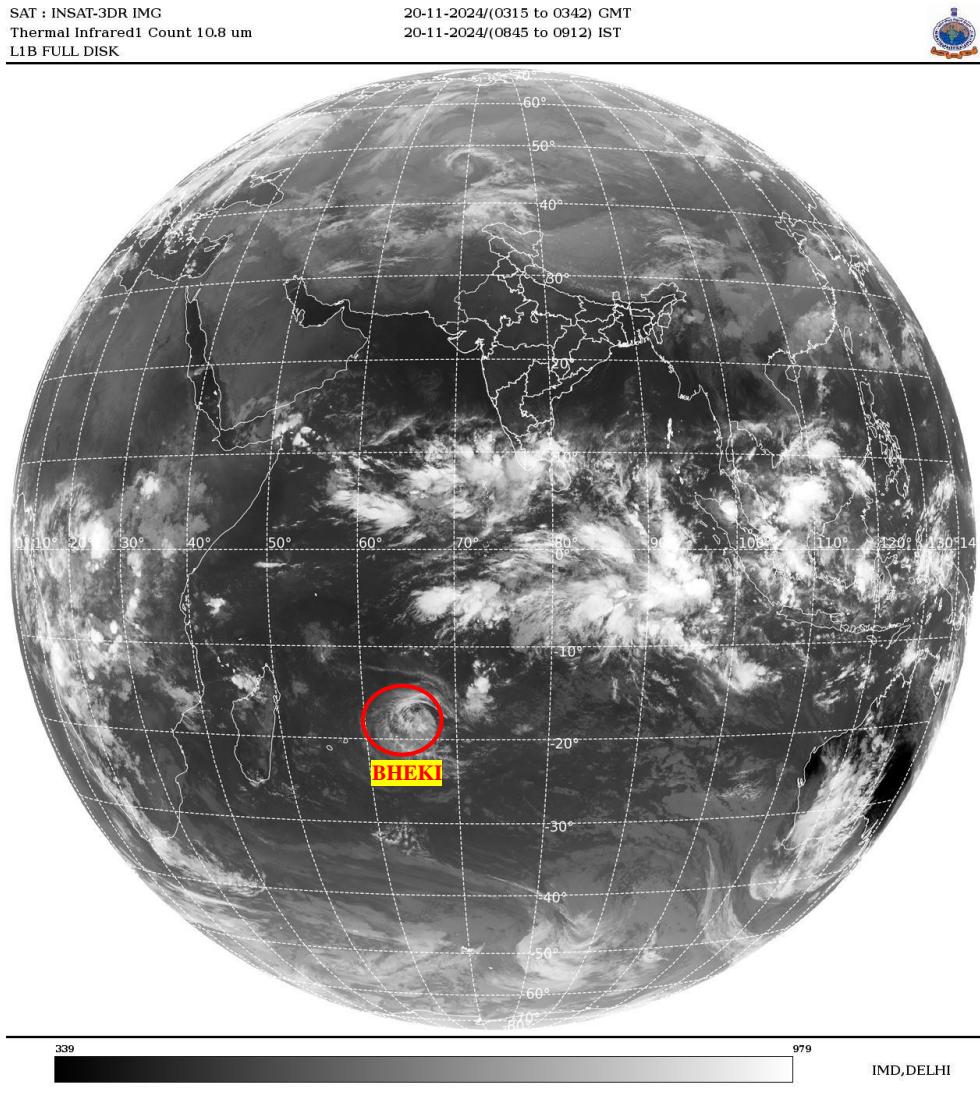
ARABIAN SEA:-

SCT LOW/MED CLOUDS WITH EMBDD INT TO V INT CONVTN OVER SOUTH ARSEA LKSDP ILS
AREA COMORIN & MALDIVES AREA (.) SCT LOW/MED CLOUDS WITH EMBDD MOD TO INT
CONVTN OVER SOUTH PARTS OF CENTRAL ARSEA (.)

BAY OF BENGAL & ANDAMAN SEA:-

SCT LOW/MED CLOUDS WITH EMBDD INT TO V INT CONVTN OVER SW BAY PALK STR &
GULF OF MANNAR (.) SCT LOW/MED CLOUDS WITH EMBDD MOD TO INT CONVTN OVER SE
BAY AND ISOL WK TO MOD CONVTN OVER EC BAY ANDAMAN SEA (.)

CLOUDS DESCRIPTION OUTSIDE INDIA:-



VORTEX (BHEKI) OVER SOUTH INDIAN OCEAN:-

VORTEX (**BHEKI**) OVER SOUTH INDIAN OCEAN (**AREA D60**) CENTERED NEAR **19.0S / 63.2E** (.)
INTENSITY **T3.0/3.5** (.) MAXIMUM SUSTAINED WINDS **48-63 KTS** (.) ASSTD SCT TO BKN
LOW/MED CLOUDS WITH EMBDD MOD TO INT CONVTN OVER AREA BET LAT 15.0S TO 22.0S
LONG 61.0E TO 70.0E (.)

SCT LOW/MED CLOUDS WITH EMBDD MOD TO INT CONVTN OVER SRI LANKA PALK STR
GULF OF MANNAR MALDIVES CHINA YELLOW SEA EAST CHINA SEA S THAILAND GULF OF
THAILAND CAMBODIA S VIETNAM SUMATRA STR OF MALACCA MALAYSIA BORNEO
SOUTH CHINA SEA JAVA ILS & SEA CELEBES ILS & SEA MADAGASCAR MOZAMBIQUE
CHANNEL AND OVER INDIAN OCEAN BET LAT 5.0N TO 25.0S LONG 40.0E TO 120.0E (.)

TOO 20/0940 HRS IST=

NNNN

LEGEND:-

REGION	NORTH	J&K HP PJB HARY DLH UP UTRKND	
	EAST	BHR JHRKND CHTGH ORS WB SKM NORTH- EAST STATES	
	WEST	RAJ MP GUJ MAHA GOA	
	SOUTH	TLNGN AP KRNTK KER TN LKSDP ANDAMAN & NICOBAR ILS	
CLOUD DISTRIBUTION	ISOL	ISOLATED (LESS THAN 25%)	
	SCT	SCATTERED (25 TO 50%)	
	BKN	BROKEN (51 TO 75%)	
	SLD	SOLID (GREATER THAN 75%)	
CLOUDS TOP TEMPERATURE	CTT	CLOUD TOP TEMPERATURE	
CONVECTION	WK CONVTN	WEAK CONVECTION (CTT GREATER THAN -25°C)	
	MOD CONVTN	MODERATE CONVECTION (CTT BETWEEN -25°C TO -40°C)	
	INT CONVTN	INTENSE CONVECTION (CTT BETWEEN -41°C TO -70°C)	
	V INT CONVTN	VERY INTENSE CONVECTION (CTT LESS THAN -70°C)	
METEOROLOGICAL SUB- DIVISIONS, STATES & UNION TERITORIES	ARUPR	ARUNACHAL PRADESH	
	BHR	BIHAR	
	CHTGH	CHHATTISGARH	
	COTL AP	COASTAL ANDHRA PRADESH	
	COTL KRNTK	COASTAL KARNATAKA	
	COTL ORS	COASTAL ORISSA	
	GUJ	GUJARAT	
	GWB	GANGETIC WEST BENGAL	
	HARY	HARYANA	
	DLH	DELHI	
	HP	HIMACHAL PRADESH	
	J&K	JAMMU AND KASHMIR	
	JHRKND	JHARKHAND	
	KER	KERALA	
	KKN	KONKAN	
	LKSDP	LAKSHADWEEP	
	M MAHA	MADHYA MAHARASHTRA	
	MAHA	MAHARASHTRA	
	MANI	MANIPUR	
	MEGHA	MEGHALAYA	
	MIZO	MIZORAM	
	MP	MADHYA PRADESH	
		MRTHWD	MARATHWADA
		NAGA	NAGALAND
N COTL AP		NORTH COASTAL ANDHRA PRADESH	
NIK		NORTH INTERIOR KARNATAKA	

	ORS	ORISSA
	PJB	PUNJAB
	RAJ	RAJASTHAN
	RYLSM	RAYALASEEMA
	SAU & KUTCH	SAURASHTRA & KUTCH
	SHWB	SUB-HIMALAYAN WEST BENGAL
	SIK	SOUTH INTERIOR KARNATAKA
	SKM	SIKKIM
	TLNGN	TELANGANA
	TN	TAMIL NADU
	TRP	TRIPURA
	UP	UTTAR PRADESH
	UTRKND	UTTARAKHAND
	VID	VIDHARBHA
	SHWB	SUB HIMALAYAN WEST BENGAL
	GWB	GANGETIC WEST BENGAL
	ARSEA	ARABIAN SEA
	ILS	ISLANDS
MISCELLANEOUS	ASSW	IN ASSOCIATION WITH
	ASSTD	ASSOCIATED
	LLC	LOW LEVEL CIRCULATION
	EMBDD	EMBEDDED
	N/HOOD	NEIGHBOURHOOD
	EXT	EXTREME