



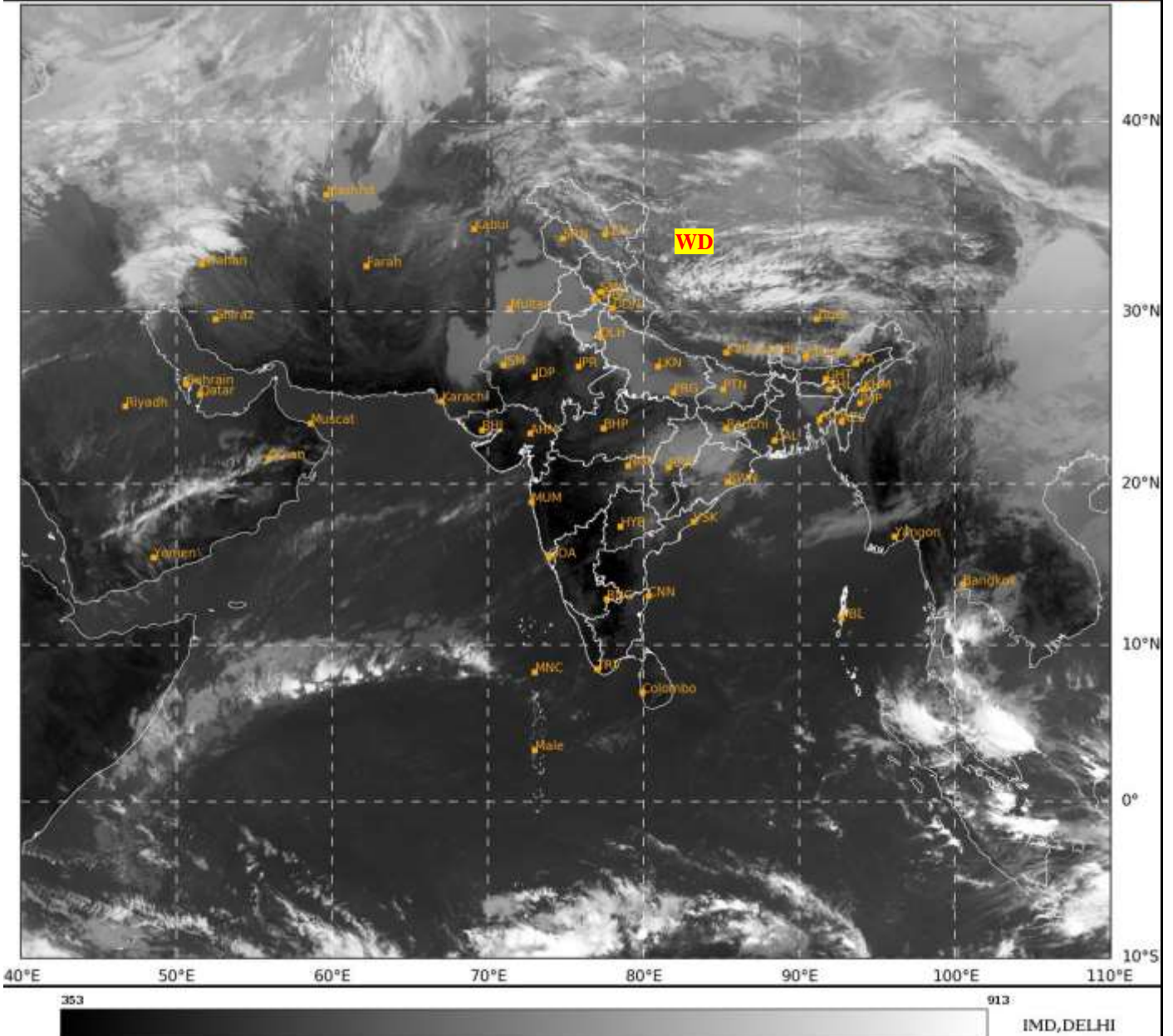
भारत मौसम विज्ञान विभाग
पृथ्वी विज्ञान मंत्रालय
India Meteorological Department
Ministry of Earth Sciences



**SATELLITE BULLETIN BASED ON SATELLITE
IMAGERIES AND PRODUCTS**
23.01.2024 TIME 0600 UTC

SAT : INSAT-3DR IMG
IMG_TIR1 10.8 um
L1C Mercator

23-01-2024/(0615 to 0642) GMT
23-01-2024/(1145 to 1212) IST



TCIN50 DEMS 230600

SATELLITE BULLETIN BASED ON INSAT- 3D PIC OF 230600 UTC (.)

REGION COVERED BETWEEN LAT 50.0°N TO 35.0°S AND LONG 40.0°E TO 125.0°E (.)

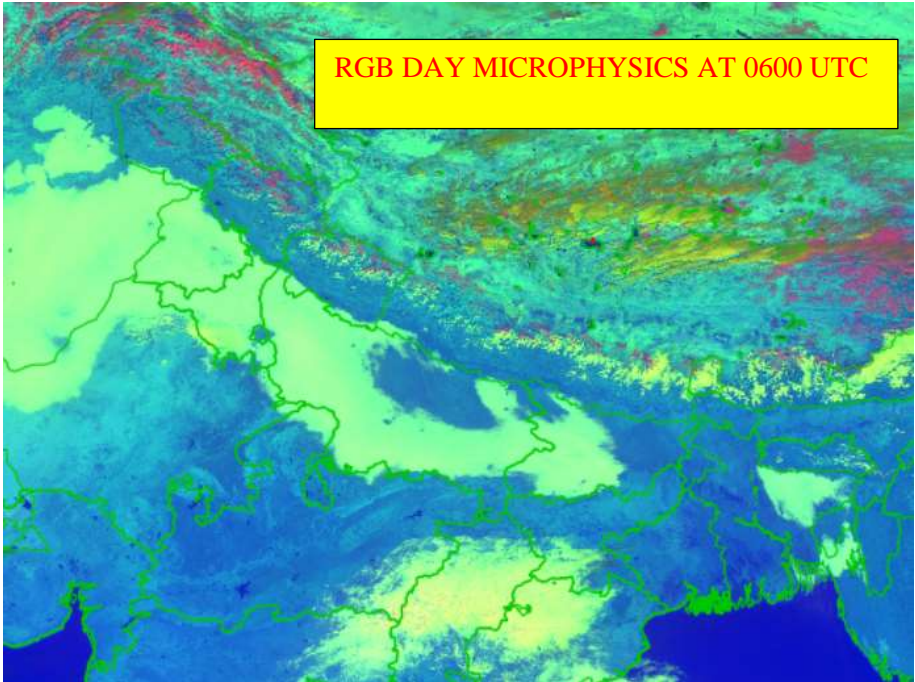
SALIENT FEATURES:-

WESTERN DISTURBANCE:-

SCT MULTILAYERED CLOUDS OVER LADAKH N HP N UTRKND TIBET ADJ CHINA IN ASSW
WD OVER THE AREA (.)

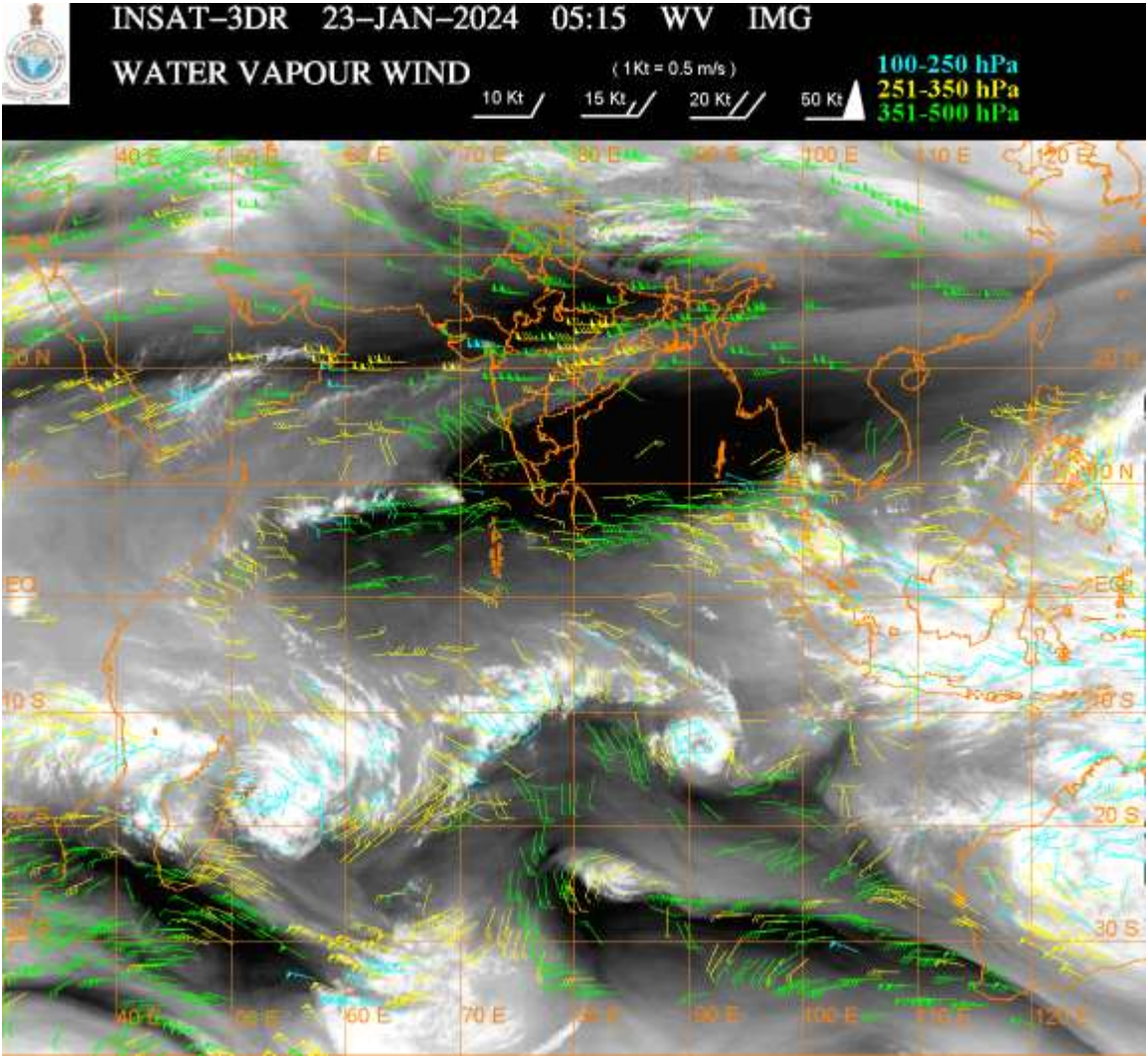
FOG / LOW CLOUDS:-

METEOSAT RGB NIGHT FOG IMAGERY AT 0600 UTC SHOWS BKN FOG / LOW CLOUDS OVER
EC PAK EXT S J&K S UTRKND PJB HARY EXT W RAJ UP W BHR EXT N MP S TRP BD AND ISOL
TO SCT FOG / LOW CLOUDS OVER ORS N COTL AP (.)



JET STREAM WINDS:

RECENT WATER VAPOUR WIND AT 0600 UTC SHOWS A JET STREAM OVER THE NORTH PLAINS OF INDIA (.)



CLOUDS DESCRIPTION WITHIN INDIA:-

NORTH:-

SCT LOW/MED CLOUDS WITH EMBDD ISOL WK TO MOD CONVTN OVER LADAKH N HP N UTRKND (.) SCT LOW/MED CLOUDS OVER J&K S HP S HARY (.)

EAST:-

SCT LOW/MED CLOUDS WITH EMBDD ISOL WK CONVTN OVER SKM ARUPR (.) SCT LOW/MED CLOUDS OVER JHRKND CHTGH ORS REST NE STATES & BD (.)

WEST:-

SCT LOW/MED CLOUDS OVER E MP VID (.)

SOUTH:-

SCT LOW/MED CLOUDS OVER KRNTK TLNGN N COTL AP KER (.)

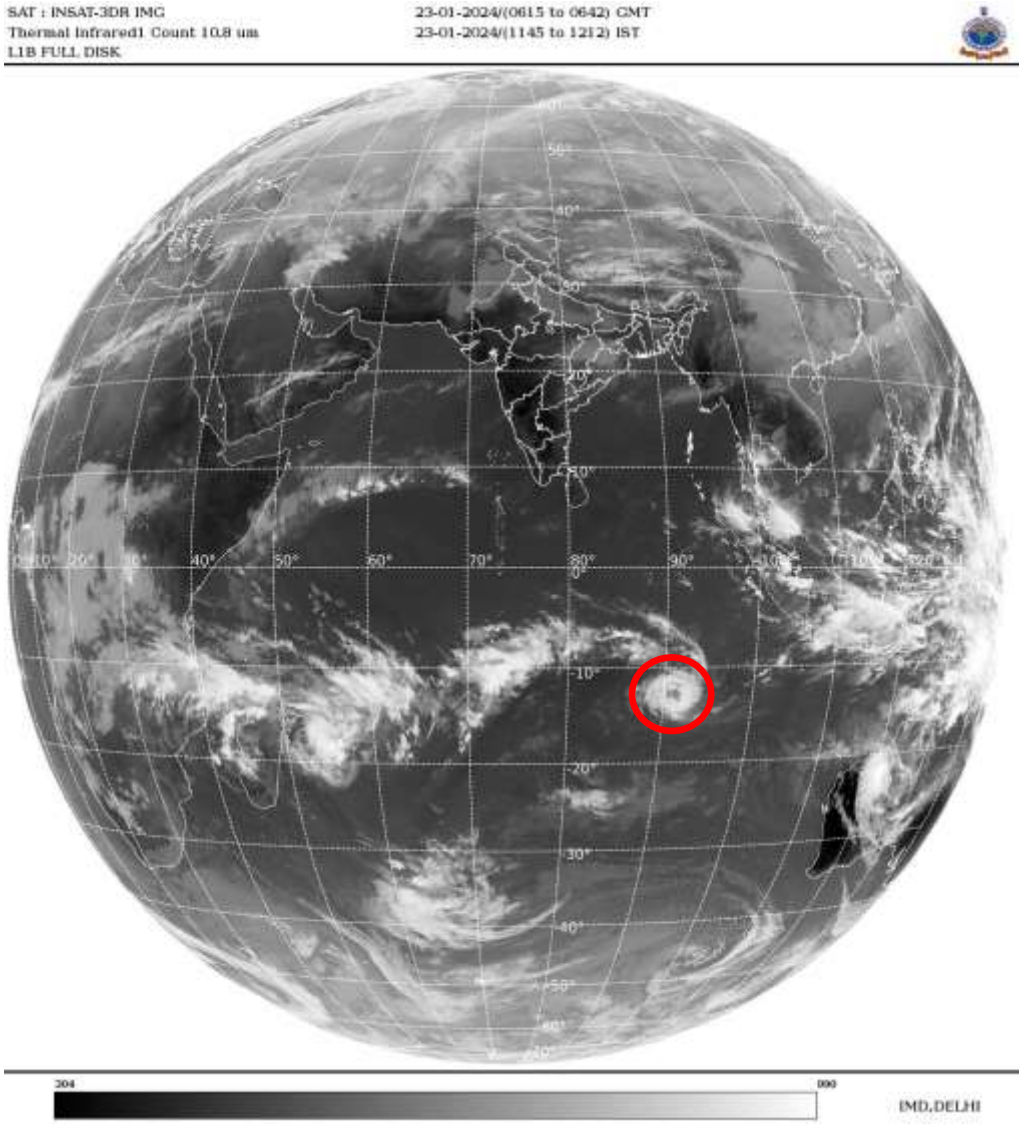
ARABIAN SEA:-

SCT LOW/MED CLOUDS WITH EMBDD INT TO V INT CONVTN OVER SOUTH ARSEA AND ISOL WK TO MOD CONVTN OVER CENTRAL ARSEA (.)

BAY OF BENGAL & ANDAMAN SEA:-

SCT LOW/MED CLOUDS WITH EMBDD ISOL MOD TO INT CONVTN OVER S ANDAMAN SEA (.)
SCT LOW/MED CLOUDS OVER BAY (.)

CLOUDS DESCRIPTION OUTSIDE INDIA:-



VORTEX (ANGGREK) OVER SOUTH INDIAN OCEAN:-

VORTEX (**ANGGREK**) OVER SOUTH INDIAN OCEAN (**AREA H05**) CENTERED NEAR **13.0S / 91.7E** (.) INTENSITY **T2.5/2.5** (.) MAXIMUM SUSTAINED WINDS OF **34-47 KTS** (.) ASSTD SCT TO BKN LOW/MED CLOUDS WITH EMBDD MOD TO INT CONVTN OVER AREA BET LAT 10.0S TO 15.0S LONG 88.0E TO 94.0E (.)

SCT LOW/MED CLOUDS WITH EMBDD MOD TO INT CONVTN OVER TIBET CHINA GULF OF THAILAND SUMATRA STR OF MALACCA MALAYSIA BORNEO SOUTH CHINA SEA JAVA ILS & SEA CELEBES ILS & SEA PHILIPPINES SULU SEA MADAGASCAR MOZAMBIQUE CHANNEL AND OVER INDIAN OCEAN BET LAT 5.0N TO 20.0S LONG 40.0E TO 120.0E AND BET LAT 20.0S TO 35.0S LONG 50.0E TO 85.0E (.)

TOO 23/1245 HRS IST=

NNNN

LEGEND:-

REGION	NORTH	J&K HP PJB HARY DLH UP UTRKND
	EAST	BHR JHRKND CHTGH ORS WB SKM NORTH- EAST STATES
	WEST	RAJ MP GUJ MAHA GOA
	SOUTH	TLNGN AP KRNTK KER TN LKSDP ANDAMAN & NICOBAR ILS
CLOUD DISTRIBUTION	ISOL	ISOLATED (LESS THAN 25%)
	SCT	SCATTERED (25 TO 50%)
	BKN	BROKEN (51 TO 75%)
	SLD	SOLID (GREATER THAN 75%)
CLOUDS TOP TEMPERATURE	CTT	CLOUD TOP TEMPERATURE
CONVECTION	WK CONVTN	WEAK CONVECTION (CTT GREATER THAN -25□C)
	MOD CONVTN	MODERATE CONVECTION (CTT BETWEEN -25□C TO -40□C)
	INT CONVTN	INTENSE CONVECTION (CTT BETWEEN -41□C TO -70□C)
	V INT CONVTN	VERY INTENSE CONVECTION (CTT LESS THAN -70□C)
METEOROLOGICAL SUB- DIVISIONS, STATES & UNION TERITORIES	ARUPR	ARUNACHAL PRADESH
	BHR	BIHAR
	CHTGH	CHHATTISGARH
	COTL AP	COASTAL ANDHRA PRADESH
	COTL KRNTK	COASTAL KARNATAKA
	COTL ORS	COASTAL ORISSA
	GUJ	GUJARAT
	GWB	GANGETIC WEST BENGAL
	HARY	HARYANA
	DLH	DELHI
	HP	HIMACHAL PRADESH
	J&K	JAMMU AND KASHMIR
	JHRKND	JHARKHAND
	KER	KERALA
	KKN	KONKAN
	LKSDP	LAKSHADWEEP
	M MAHA	MADHYA MAHARASHTRA
	MAHA	MAHARASHTRA
	MANI	MANIPUR
	MEGHA	MEGHALAYA
	MIZO	MIZORAM
	MP	MADHYA PRADESH
	MRTHWD	MARATHWADA
	NAGA	NAGALAND
	N COTL AP	NORTH COASTAL ANDHRA PRADESH
	NIK	NORTH INTERIOR KARNATAKA
	ORS	ORISSA

	PJB	PUNJAB
	RAJ	RAJASTHAN
	RYLSM	RAYALASEEMA
	SAU & KUTCH	SAURASHTRA & KUTCH
	SHWB	SUB-HIMALAYAN WEST BENGAL
	SIK	SOUTH INTERIOR KARNATAKA
	SKM	SIKKIM
	TLNGN	TELANGANA
	TN	TAMIL NADU
	TRP	TRIPURA
	UP	UTTAR PRADESH
	UTRKND	UTTARAKHAND
	VID	VIDHARBHA
	SHWB	SUB HIMALAYAN WEST BENGAL
	GWB	GANGETIC WEST BENGAL
	ARSEA	ARABIAN SEA
	ILS	ISLANDS
MISCELLANEOUS	ASSW	IN ASSOCIATION WITH
	ASSTD	ASSOCIATED
	LLC	LOW LEVEL CIRCULATION
	EMBDD	EMBEDDED
	N/HOOD	NEIGHBOURHOOD
	EXT	EXTREME