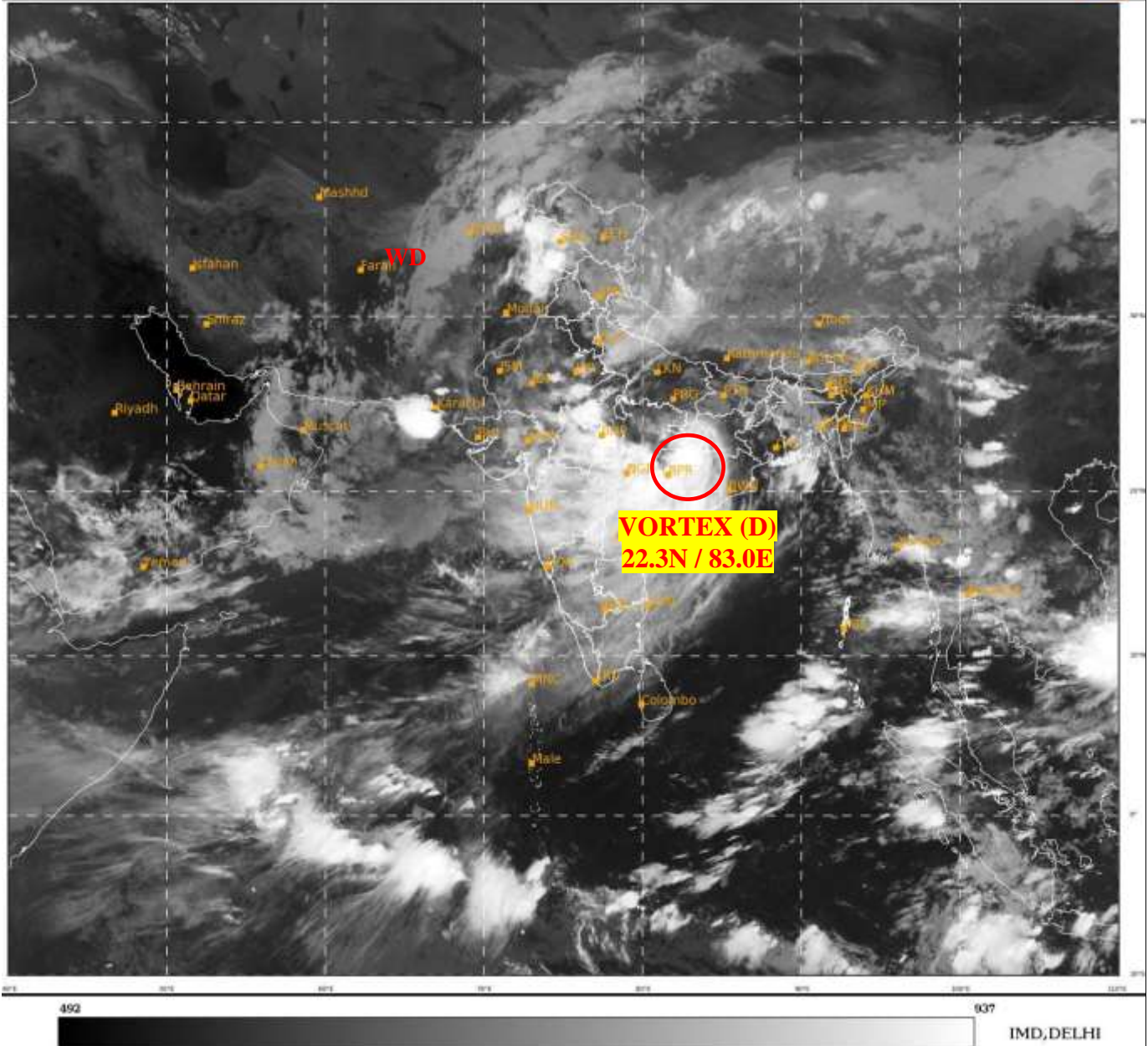




**SATELLITE BULLETIN BASED ON SATELLITE  
IMAGERIES AND PRODUCTS**  
**15.08.2022 TIME 0000 UTC**

SAT : INSAT-3D IMG  
IMG TIR1 10.8 um  
LIC Mercator

15-08-2022/(0000 to 0026) GMT  
15-08-2022/(0530 to 0556) IST



TCIN50 DEMS 150000

SATELLITE BULLETIN BASED ON INSAT-3D PIC OF 150000 UTC (.)

REGION COVERED BETWEEN LAT 50.0°N TO 30.0°S AND LONG 40.0°E TO 125.0°E (.)

**SALIENT FEATURES:-**

**VORTEX (D) OVER NORTH CHTGH & N/HOOD:-**

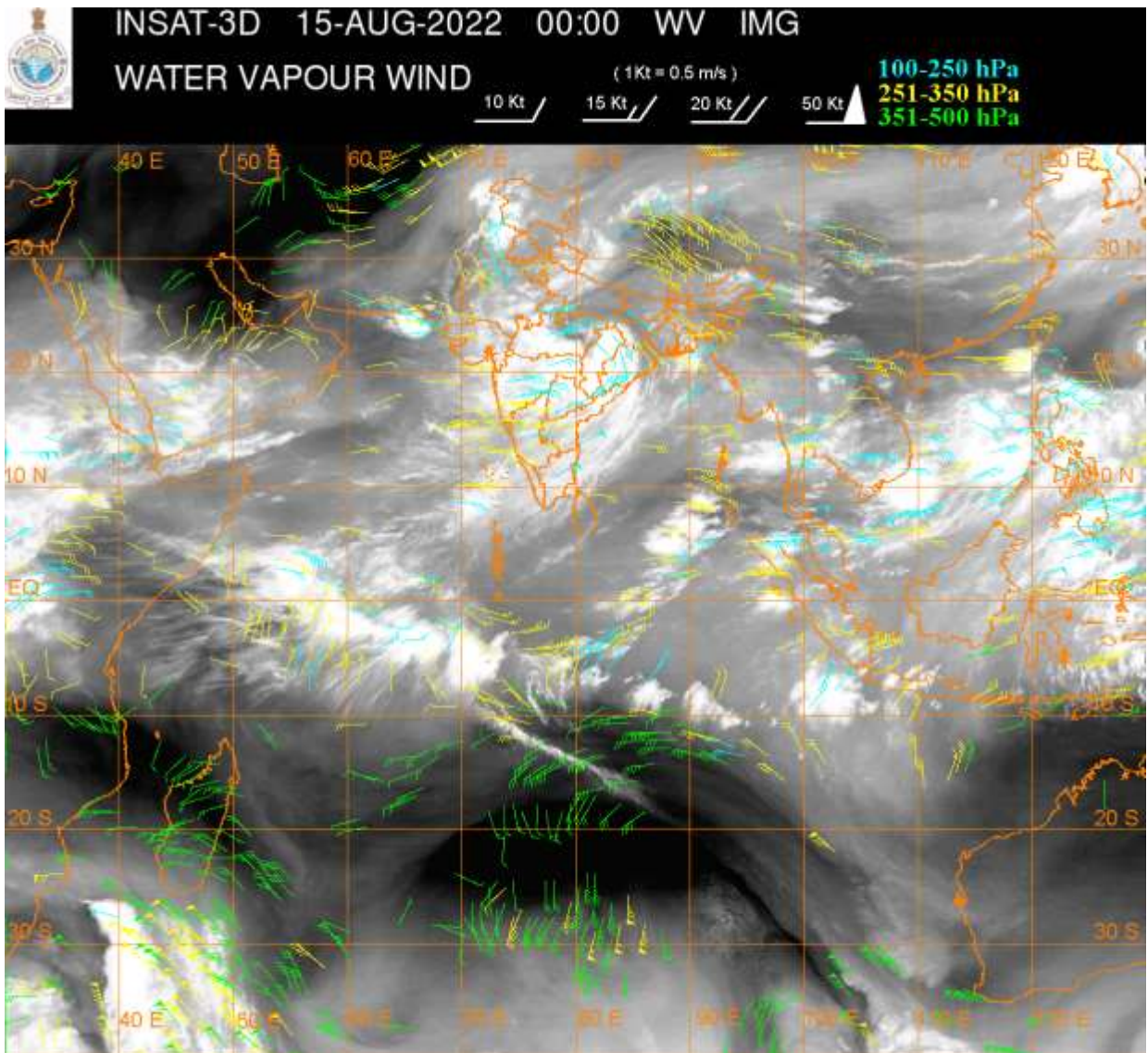
VORTEX (D) OVER N CHTGH & N/HOOD CENTERED WITHIN HALF A DEGREE OF **22.3N / 83.0E** (.) ASSTD SCT TO BKN LOW/MED CLOUDS WITH EMBDD INT TO V INT CONVTN OVER CHTGH ORS W JHRKND (.) MINIMUM CTT MINUS **93** DEG C (.)

**WESTERN DISTURBANCE (WD):-**

SCT MULTILAYERED CLOUDS OVER AFGAN PAK & N/HOOD IN ASSW **WD** OVER THE AREA (.)

**INTENSE CONVECTIVE CLOUDS:-**

INTENSE CONVECTIVE CLOUDS OBSERVED OVER J&K UTRKND NW UP JHRKND CHTGH ORS ARUPR E RAJ MP E GUJ MAHA KRNTK TLNGN N COTL AP LKSDP ILS (.)



**CLOUDS DESCRIPTION WITHIN INDIA:-**

**NORTH:-**

SCT TO BKN LOW/MED CLOUDS WITH EMBDD INT TO V INT CONVTN OVER J&K (MINIMUM CTT MINUS 90 DEG C) (.) SCT TO BKN LOW/MED CLOUDS WITH EMBDD MOD TO INT CONVTN OVER NW LADAKH UTRKND NW & EXT SE UP (.) SCT TO BKN LOW/MED CLOUDS WITH EMBDD WK TO MOD CONVTN OVER REST LADAKH HP PJB HARY DLH REST UP (.)

**EAST:-**

SCT TO BKN LOW/MED CLOUDS WITH EMBDD INT TO V INT CONVTN OVER CHTGH (MINIMUM CTT MINUS 93 DEG C) W ORS (MINIMUM CTT MINUS 82 DEG C) (.) SCT TO BKN LOW/MED CLOUDS WITH EMBDD MOD TO INT CONVTN OVER W & NE JHRKND SE ORS ARUPR SW BD AND WK TO MOD CONVTN OVER BHR JHRKND GWB SHWB SKM REST NE STATES REST BD (.)

**WEST:-**

SCT TO BKN LOW/MED CLOUDS WITH EMBDD INT TO V INT CONVTN OVER E RAJ W & SE MP VID (MINIMUM CTT MINUS 93 DEG C) (.) SCT TO BKN LOW/MED CLOUDS WITH EMBDD MOD TO INT CONVTN OVER REST MP E GUJ MRTHWD MADHYA MAHA KKN (.) SCT LOW/MED CLOUDS WITH EMBDD WK TO MOD CONVTN OVER W RAJ W GUJ GOA (.)

**SOUTH:-**

SCT TO BKN LOW/MED CLOUDS WITH EMBDD INT TO V INT CONVTN OVER TLNGN N COTL AP (MINIMUM CTT MINUS 80 DEG C) (.) SCT TO BKN LOW/MED CLOUDS WITH EMBDD MOD TO INT CONVTN OVER KRNTK S COTL AP LKSDP ILS (.) SCT LOW/MED CLOUDS WITH EMBDD WK TO MOD CONVTN OVER RYLSM KER TN ANDAMAN & NICOBAR ILS (.)

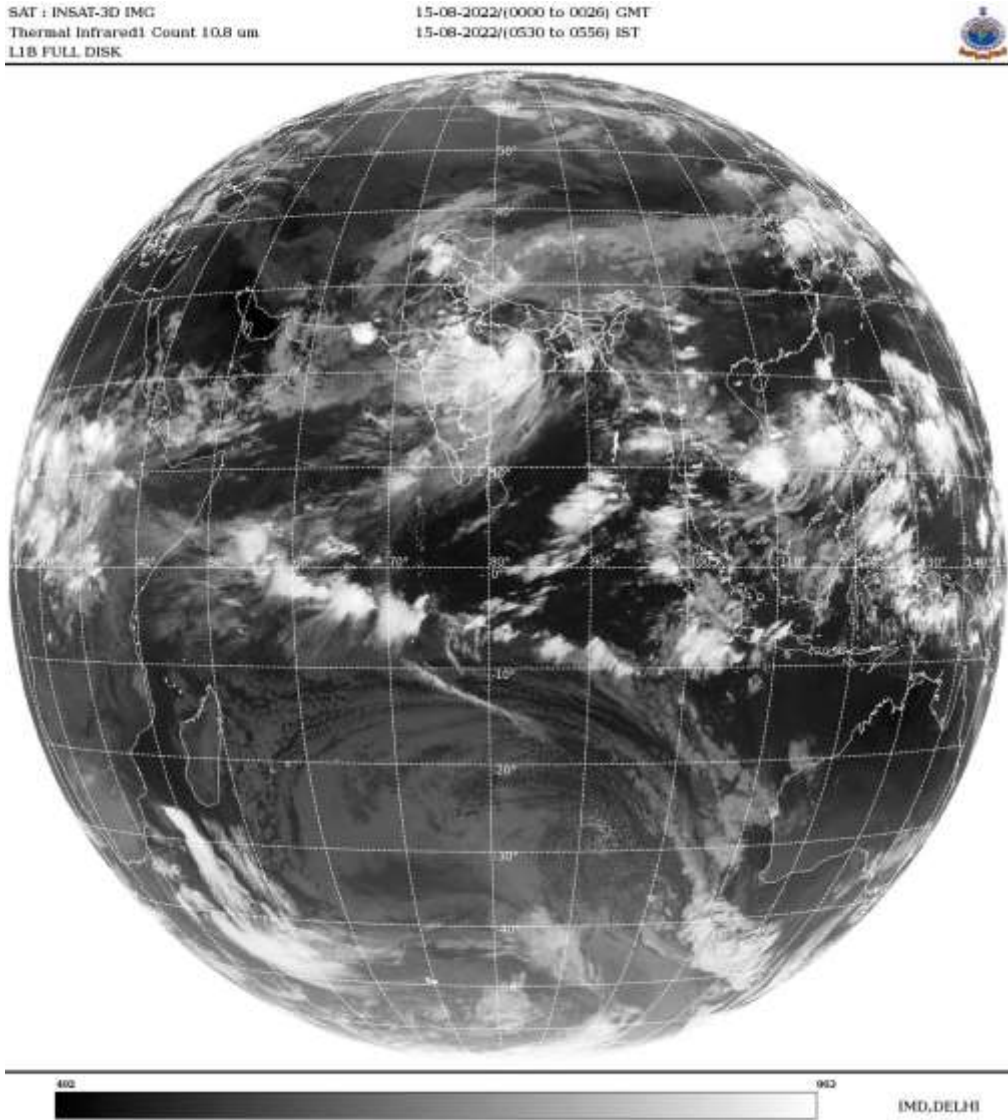
**ARABIAN SEA:-**

SCT TO BKN LOW/MED CLOUDS WITH EMBDD INT TO V INT CONVTN OVER NE ARSEA OFF PAK COAST (.) SCT LOW/MED CLOUDS WITH EMBDD MOD TO INT CONVTN OVER EC & SE ARSEA AND LKSDP ILS AREA (.) SCT LOW/MED CLOUDS WITH EMBDD WK TO MOD CONVTN OVER REST ARSEA GULF OF CAMBAY AND COMORIN AREA (.)

**BAY OF BENGAL & ANDAMAN SEA:-**

**SCT LOW/MED CLOUDS WITH EMBDD INT TO V INT CONVTN OVER SE BAY AND N ANDAMAN SEA (.) SCT LOW/MED CLOUDS WITH EMBDD MOD TO INT CONVTN OVER NORTH BAY CENTRAL BAY GULF OF MARTABAN AND WK TO MOD CONVTN OVER SW BAY S ANDAMAN SEA (.)**

**CLOUDS DESCRIPTION OUTSIDE INDIA:-**



**SCT LOW/MED CLOUDS WITH EMBDD MOD TO INT CONVTN OVER PAK NEPAL BHUTAN TIBET CHINA YELLOW SEA E CHINA SEA TAIWAN MYANMAR THAILAND GULF OF THIALAND CAMBODIA LAOS VIETNAM GULF OF TONKIN SUMATRA STR OF MALACCA MALAYSIA BORNEO SOUTH CHINA SEA JAVA ILS & SEA CELEBES ILS & SEA PHILIPPINES SULU SEA AND OVER INDIAN OCEAN BET LAT 5.0N TO 15.0S LONG 50.0E TO 110.0E (.)**

**TOO 15/0640 HRS IST=**

**NNNN**

**LEGEND:-**

<b>REGION</b>	<b>NORTH</b>	<b>J&amp;K HP PJB HARY DLH UP UTRKND</b>
	<b>EAST</b>	<b>BHR JHRKND CHTGH OR WB SKM NORTH- EAST STATES</b>
	<b>WEST</b>	<b>RAJ MP GUJ MAHA GOA</b>
	<b>SOUTH</b>	<b>TLNGN AP KRNTK KER TN LKSDP ANDAMAN &amp; NICOBAR ILS</b>

<b>CLOUD DISTRIBUTION</b>	<b>ISOL</b>	<b>ISOLATED (LESS THAN 25%)</b>
	<b>SCT</b>	<b>SCATTERED (25 TO 50%)</b>
	<b>BKN</b>	<b>BROKEN (51 TO 75%)</b>
	<b>SLD</b>	<b>SOLID (GREATER THAN 75%)</b>
<b>CLOUDS TOP TEMPERATURE</b>	<b>CTT</b>	<b>CLOUD TOP TEMPERATURE</b>
<b>CONVECTION</b>	<b>WK CONVTN</b>	<b>WEAK CONVECTION (CTT GREATER THAN -25°C)</b>
	<b>MOD CONVTN</b>	<b>MODERATE CONVECTION (CTT BETWEEN -25°C TO -40°C)</b>
	<b>INT CONVTN</b>	<b>INTENSE CONVECTION (CTT BETWEEN -41°C TO -70°C)</b>
	<b>V INT CONVTN</b>	<b>VERY INTENSE CONVECTION (CTT LESS THAN -70°C)</b>
<b>METEOROLOGICAL SUB-DIVISIONS, STATES &amp; UNION TERRITORIES</b>	<b>ARUPR</b>	<b>ARUNACHAL PRADESH</b>
	<b>BHR</b>	<b>BIHAR</b>
	<b>CHTGH</b>	<b>CHHATTISGARH</b>
	<b>COTL AP</b>	<b>COASTAL ANDHRA PRADESH</b>
	<b>COTL KRNTK</b>	<b>COASTAL KARNATAKA</b>
	<b>COTL ORS</b>	<b>COASTAL ORISSA</b>
	<b>GUJ</b>	<b>GUJARAT</b>
	<b>GWB</b>	<b>GANGETIC WEST BENGAL</b>
	<b>HARY</b>	<b>HARYANA</b>
	<b>DLH</b>	<b>DELHI</b>
	<b>HP</b>	<b>HIMACHAL PRADESH</b>
	<b>J&amp;K</b>	<b>JAMMU AND KASHMIR</b>
	<b>JHRKND</b>	<b>JHARKHAND</b>
	<b>KER</b>	<b>KERALA</b>
	<b>KKN</b>	<b>KONKAN</b>
	<b>LKSDP</b>	<b>LAKSHADWEEP</b>
	<b>M MAHA</b>	<b>MADHYA MAHARASHTRA</b>
	<b>MAHA</b>	<b>MAHARASHTRA</b>
	<b>MANI</b>	<b>MANIPUR</b>
	<b>MEGHA</b>	<b>MEGHALAYA</b>
	<b>MIZO</b>	<b>MIZORAM</b>
	<b>MP</b>	<b>MADHYA PRADESH</b>
	<b>MRTHWD</b>	<b>MARATHWADA</b>
	<b>NAGA</b>	<b>NAGALAND</b>
	<b>N COTL AP</b>	<b>NORTH COASTAL ANDHRA PRADESH</b>

	<b>NIK</b>	<b>NORTH INTERIOR KARNATAKA</b>
	<b>ORS</b>	<b>ORISSA</b>
	<b>PJB</b>	<b>PUNJAB</b>
	<b>RAJ</b>	<b>RAJASTHAN</b>
	<b>RYLSM</b>	<b>RAYALASEEMA</b>
	<b>SAU &amp; KUTCH</b>	<b>SAURASHTRA &amp; KUTCH</b>
	<b>SHWB</b>	<b>SUB-HIMALAYAN WEST BENGAL</b>
	<b>SIK</b>	<b>SOUTH INTERIOR KARNATAKA</b>
	<b>SKM</b>	<b>SIKKIM</b>
	<b>TLNGN</b>	<b>TELANGANA</b>
	<b>TN</b>	<b>TAMIL NADU</b>
	<b>TRP</b>	<b>TRIPURA</b>
	<b>UP</b>	<b>UTTAR PRADESH</b>
	<b>UTRKN</b>	<b>UTTARAKHAND</b>
	<b>VID</b>	<b>VIDHARBHA</b>
	<b>SHWB</b>	<b>SUB HIMALAYAN WEST BENGAL</b>
	<b>GWB</b>	<b>GANGETIC WEST BENGAL</b>
	<b>ARSEA</b>	<b>ARABIAN SEA</b>
	<b>ILS</b>	<b>ISLANDS</b>
<b>MISCELLANEOUS</b>	<b>ASSW</b>	<b>IN ASSOCIATION WITH</b>
	<b>ASSTD</b>	<b>ASSOCIATED</b>
	<b>LLC</b>	<b>LOW LEVEL CIRCULATION</b>
	<b>EMBDD</b>	<b>EMBEDDED</b>
	<b>N/HOOD</b>	<b>NEIGHBOURHOOD</b>
	<b>EXT</b>	<b>EXTREME</b>