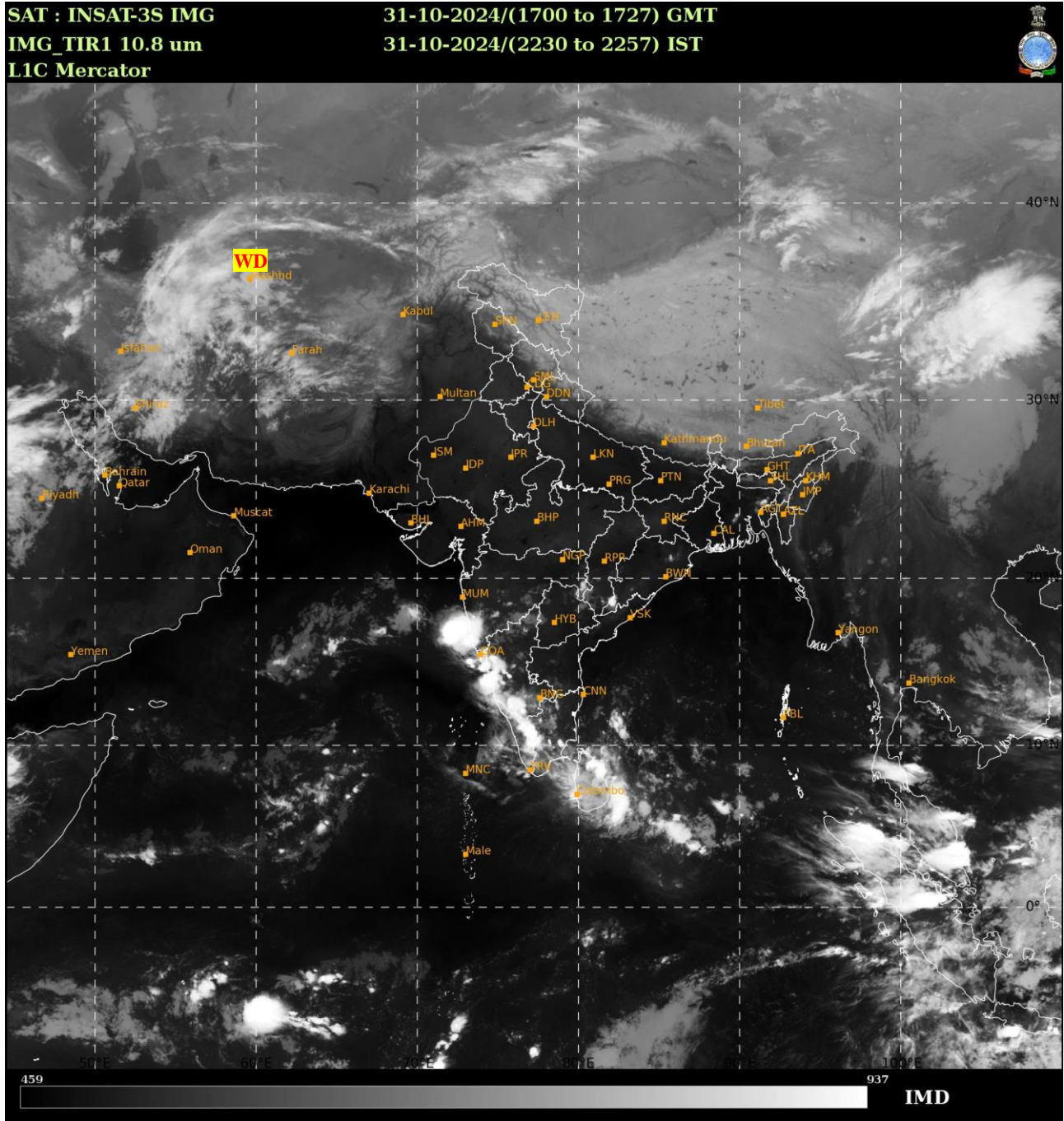




भारत मौसम विज्ञान विभाग  
पृथ्वी विज्ञान मंत्रालय  
India Meteorological Department  
Ministry of Earth Sciences



**SATELLITE BULLETIN BASED ON SATELLITE  
IMAGERIES AND PRODUCTS**  
**31.10.2024 TIME 1800 UTC**



TCIN50 DEMS 311800

SATELLITE BULLETIN BASED ON INSAT-3DS PIC OF 311700 UTC (.)

REGION COVERED BETWEEN LAT 50.0°N TO 35.0°S AND LONG 40.0°E TO 125.0°E (.)

**SALIENT FEATURES:-**

**WESTERN DISTURBANCE:-**

SCT MULTILAYERED CLOUDS OVER IRAN AFGAN & N/HOOD IN ASSW **WD** OVER THE AREA (.)

**CONVECTIVE / THUNDERSTORM ACTIVITY:-**

MODERATE TO INTENSE CONVECTIVE / THUNDERSTORM ACTIVITY OBSERVED OVER SOUTH KONKAN GOA COTL KRNTK W NIK W SIK KER W TN (MINIMUM CTT **MINUS 50-65 DEG CEL**) (.)





INSAT-3DR 31-OCT-2024 15:15 WV IMG

WATER VAPOUR WIND

(1Kt = 0.5 m/s)

10 Kt

15 Kt

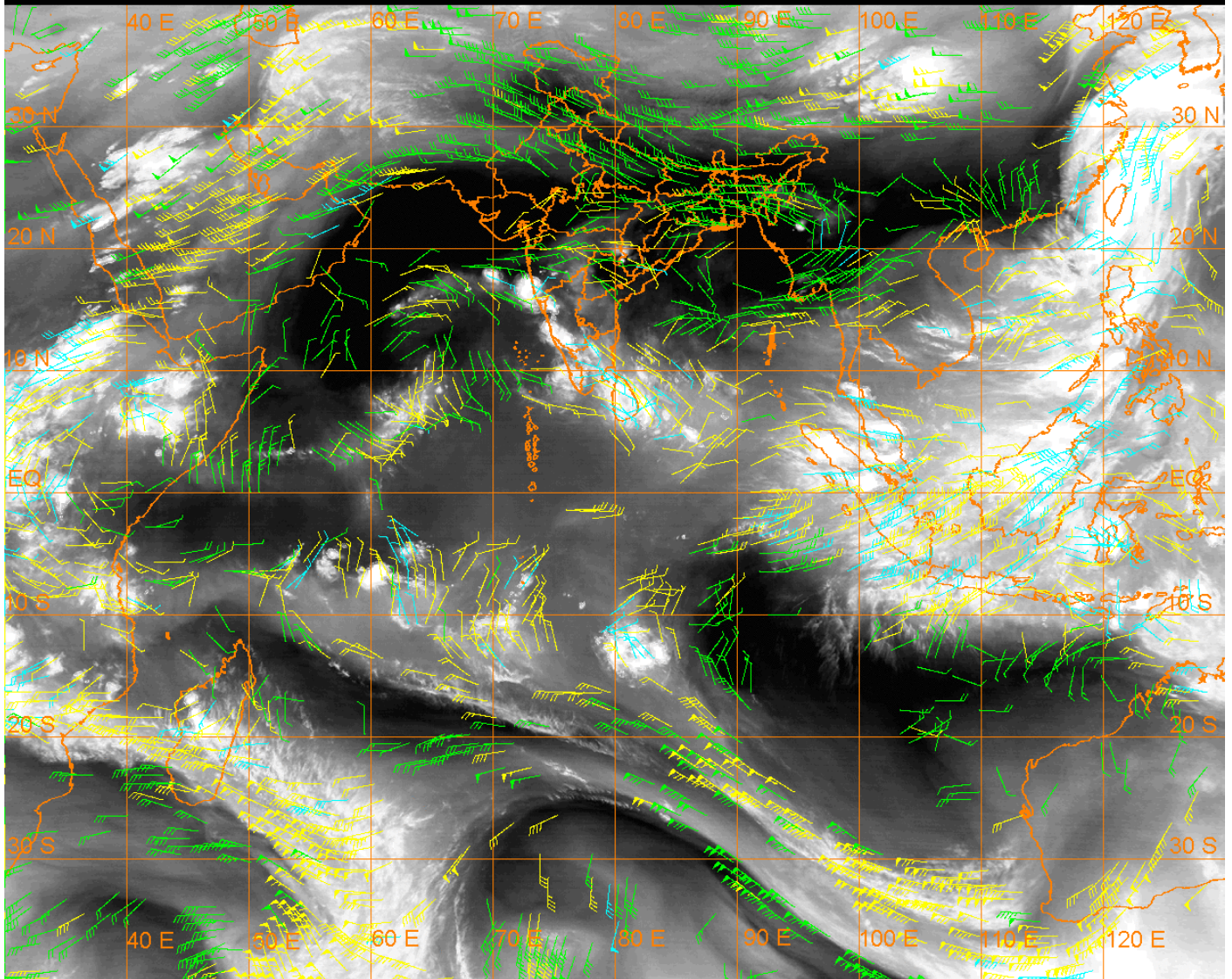
20 Kt

50 Kt

100-250 hPa

251-350 hPa

351-500 hPa



**CLOUDS DESCRIPTION WITHIN INDIA:-**

**NORTH:-**

SCT LOW/MED CLOUDS WITH EMBDD ISOL WK CONVTN OVER LADAKH (.) ISOL LOW/MED CLOUDS OVER J&K N HP N UTRKND (.)

**EAST:-**

SCT LOW/MED CLOUDS WITH EMBDD MOD TO INT CONVTN OVER S CHTGH SW ORS AND ISOL WK CONVTN OVER SKM SHWB ARUPR (.) SCT LOW/MED CLOUDS OVER BHR JHRKND N CHTGH REST ORS GWB REST NE STATES (.)

**WEST:-**

SCT LOW/MED CLOUDS WITH EMBDD MOD TO INT CONVTN OVER S KONKAN GOA AND WK TO MOD CONVTN OVER S MADHYA MAHA S MRTHWD VID (.) SCT LOW/MED CLOUDS OVER REST MAHA (.)

**SOUTH:-**

SCT LOW/MED CLOUDS WITH EMBDD MOD TO INT CONVTN OVER COTL KRNTK W NIK W SIK KER TN AND ISOL WK CONVTN OVER S RYLSM (.) SCT LOW/MED CLOUDS OVER REST KRNTK TLNGN N RYLSM COTL AP LKSDP ILS ANDAMAN & NICOBAR ILS (.)

**ARABIAN SEA:-**

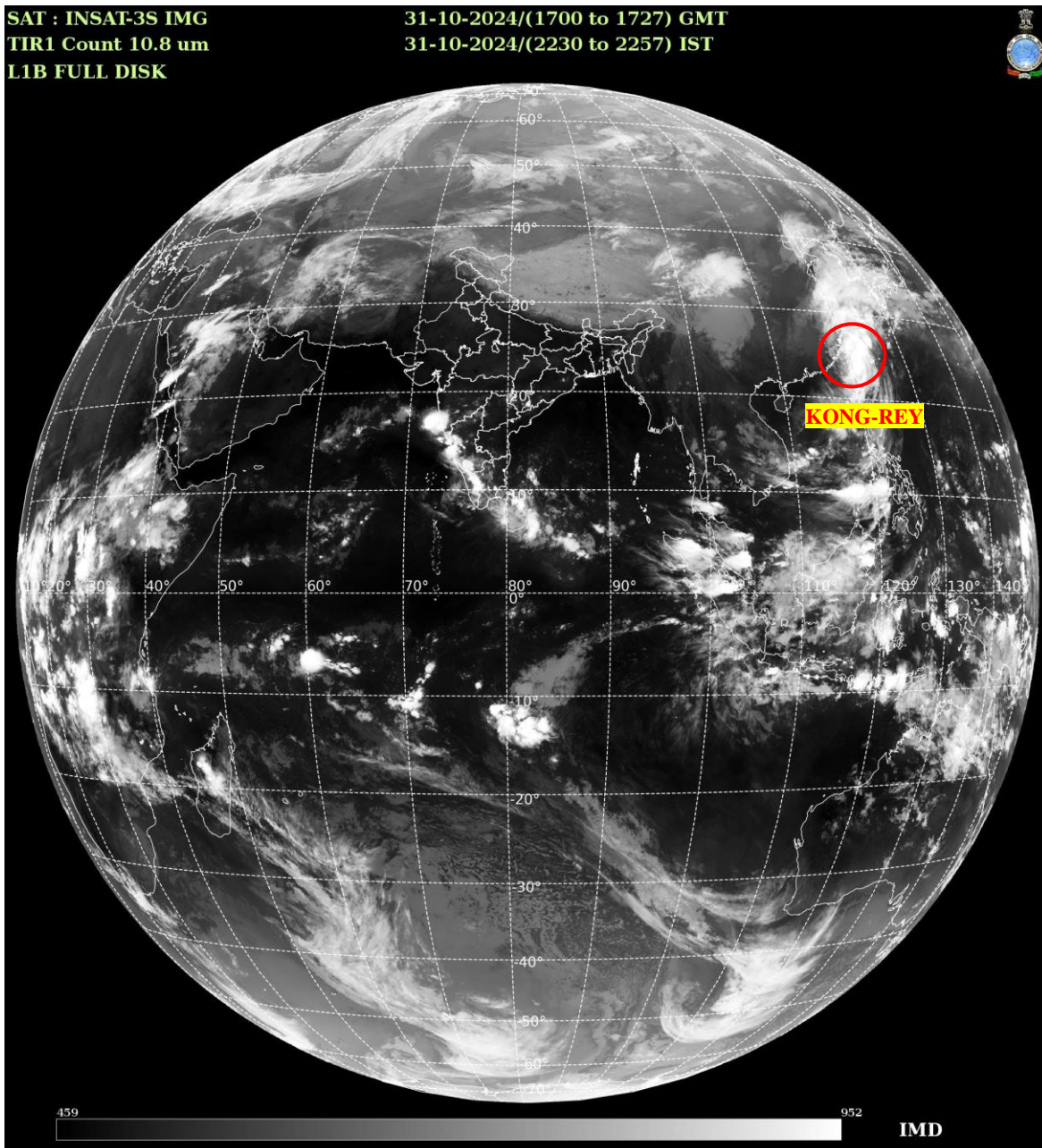
SCT LOW/MED CLOUDS WITH EMBDD MOD TO INT CONVTN OVER EC ARSEA OFF MAHA GOA KRNTK COASTS CENTRAL PARTS OF SOUTH ARSEA LKSDP ILS & COMORIN AREA (.)

**BAY OF BENGAL & ANDAMAN SEA:-**

SCT LOW/MED CLOUDS WITH EMBDD MOD TO INT CONVTN OVER SOUTH BAY (.)



**CLOUDS DESCRIPTION OUTSIDE INDIA:-**



**VORTEX (KONG -REY) OVER TAIWAN ADJ EAST CHINA SEA:-**

VORTEX (**KONG-REY**) OVER EAST CHINA SEA ADJ TAIWAN CENTERED NEAR **24.2N / 119.9E** (.) INTENSITY **T4.5/4.5** (.) MAXIMUM SUSTAINED WINDS OF **64-89 KTS** (.) ASSTD BKN LOW/MED CLOUDS WITH EMBDD INT TO V INT CONVTN OVER AREA BET LAT 18.0N TO 30.0N LONG 119.0E TO 127.0E TAIWAN PHILIPPINES & YELLOW SEA (.)

SCT LOW/MED CLOUDS WITH EMBDD MOD TO INT CONVTN OVER SRI LANKA CHINA YELLOW SEA EAST CHINA SEA TAIWAN MYANMAR THAILAND CAMBODIA VIETNAM SUMATRA STR OF MALACCA MALAYSIA BORNEO SOUTH CHINA SEA JAVA ILS & SEA CELEBES ILS & SEA PHILIPPINES SULU SEA MADAGASCAR MOZAMBIQUE CHANNEL AND OVER INDIAN OCEAN BET EQ TO 20.0S LONG 40.0E TO 100.0E (.)

TOO 31/2330 HRS IST=

NNNN

**LEGEND:-**

|        |       |   |
|--------|-------|---|
| REGION | NORTH | J&K HP PJB HARY DLH UP UTRKND                     |
|        | EAST  | BHR JHRKND CHTGH ORS WB SKM NORTH- EAST STATES    |
|        | WEST  | RAJ MP GUJ MAHA GOA                               |
|        | SOUTH | TLNGN AP KRNTK KER TN LKSDP ANDAMAN & NICOBAR ILS |

|  |                     |   |                   |
|--|---------------------|---|-------------------|
| <b>CLOUD DISTRIBUTION</b>  | <b>ISOL</b>         | <b>ISOLATED (LESS THAN 25%)</b>                         |                   |
|  | <b>SCT</b>          | <b>SCATTERED (25 TO 50%)</b>                            |                   |
|  | <b>BKN</b>          | <b>BROKEN (51 TO 75%)</b>                               |                   |
|  | <b>SLD</b>          | <b>SOLID (GREATER THAN 75%)</b>                         |                   |
| <b>CLOUDS TOP TEMPERATURE</b>  | <b>CTT</b>          | <b>CLOUD TOP TEMPERATURE</b>                            |                   |
| <b>CONVECTION</b>  | <b>WK CONVTN</b>    | <b>WEAK CONVECTION (CTT GREATER THAN -25°C)</b>         |                   |
|  | <b>MOD CONVTN</b>   | <b>MODERATE CONVECTION (CTT BETWEEN -25°C TO -40°C)</b> |                   |
|  | <b>INT CONVTN</b>   | <b>INTENSE CONVECTION (CTT BETWEEN -41°C TO -70°C)</b>  |                   |
|  | <b>V INT CONVTN</b> | <b>VERY INTENSE CONVECTION (CTT LESS THAN -70°C)</b>    |                   |
| <b>METEOROLOGICAL SUB- DIVISIONS, STATES &amp; UNION TERRITORIES</b> | <b>ARUPR</b>        | <b>ARUNACHAL PRADESH</b>                                |                   |
|  | <b>BHR</b>          | <b>BIHAR</b>  |                   |
|  | <b>CHTGH</b>        | <b>CHHATTISGARH</b>                                     |                   |
|  | <b>COTL AP</b>      | <b>COASTAL ANDHRA PRADESH</b>                           |                   |
|  | <b>COTL KRNTK</b>   | <b>COASTAL KARNATAKA</b>                                |                   |
|  | <b>COTL ORS</b>     | <b>COASTAL ORISSA</b>                                   |                   |
|  | <b>GUJ</b>          | <b>GUJARAT</b>  |                   |
|  | <b>GWB</b>          | <b>GANGETIC WEST BENGAL</b>                             |                   |
|  | <b>HARY</b>         | <b>HARYANA</b>  |                   |
|  | <b>DLH</b>          | <b>DELHI</b>  |                   |
|  | <b>HP</b>           | <b>HIMACHAL PRADESH</b>                                 |                   |
|  | <b>J&amp;K</b>      | <b>JAMMU AND KASHMIR</b>                                |                   |
|  | <b>JHRKND</b>       | <b>JHARKHAND</b>  |                   |
|  | <b>KER</b>          | <b>KERALA</b>   |                   |
|  | <b>KKN</b>          | <b>KONKAN</b>   |                   |
|  | <b>LKSDP</b>        | <b>LAKSHADWEEP</b>                                      |                   |
|  | <b>M MAHA</b>       | <b>MADHYA MAHARASHTRA</b>                               |                   |
|  | <b>MAHA</b>         | <b>MAHARASHTRA</b>                                      |                   |
|  | <b>MANI</b>         | <b>MANIPUR</b>  |                   |
|  | <b>MEGHA</b>        | <b>MEGHALAYA</b>  |                   |
|  | <b>MIZO</b>         | <b>MIZORAM</b>  |                   |
|  | <b>MP</b>           | <b>MADHYA PRADESH</b>                                   |                   |
|  |                     | <b>MRTHWD</b>   | <b>MARATHWADA</b> |
|  |                     | <b>NAGA</b>   | <b>NAGALAND</b>   |
| <b>N COTL AP</b>   |                     | <b>NORTH COASTAL ANDHRA PRADESH</b>                     |                   |
| <b>NIK</b>   |                     | <b>NORTH INTERIOR KARNATAKA</b>                         |                   |
| <b>ORS</b>   |                     | <b>ORISSA</b>   |                   |
| <b>PJB</b>   |                     | <b>PUNJAB</b>   |                   |
| <b>RAJ</b>   |                     | <b>RAJASTHAN</b>  |                   |
| <b>RYLSM</b>   |                     | <b>RAYALASEEMA</b>                                      |                   |
| <b>SAU &amp; KUTCH</b>   |                     | <b>SAURASHTRA &amp; KUTCH</b>                           |                   |
| <b>SHWB</b>  |                     | <b>SUB-HIMALAYAN WEST BENGAL</b>                        |                   |
| <b>SIK</b>   |                     | <b>SOUTH INTERIOR KARNATAKA</b>                         |                   |
| <b>SKM</b>   |                     | <b>SIKKIM</b>   |                   |

|                      |               |                                  |
|----------------------|---------------|----------------------------------|
|                      | <b>TLNGN</b>  | <b>TELANGANA</b>                 |
|                      | <b>TN</b>     | <b>TAMIL NADU</b>                |
|                      | <b>TRP</b>    | <b>TRIPURA</b>                   |
|                      | <b>UP</b>     | <b>UTTAR PRADESH</b>             |
|                      | <b>UTRKND</b> | <b>UTTARAKHAND</b>               |
|                      | <b>VID</b>    | <b>VIDHARBHA</b>                 |
|                      | <b>SHWB</b>   | <b>SUB HIMALAYAN WEST BENGAL</b> |
|                      | <b>GWB</b>    | <b>GANGETIC WEST BENGAL</b>      |
|                      | <b>ARSEA</b>  | <b>ARABIAN SEA</b>               |
|                      | <b>ILS</b>    | <b>ISLANDS</b>                   |
| <b>MISCELLANEOUS</b> | <b>ASSW</b>   | <b>IN ASSOCIATION WITH</b>       |
|                      | <b>ASSTD</b>  | <b>ASSOCIATED</b>                |
|                      | <b>LLC</b>    | <b>LOW LEVEL CIRCULATION</b>     |
|                      | <b>EMBDD</b>  | <b>EMBEDDED</b>                  |
|                      | <b>N/HOOD</b> | <b>NEIGHBOURHOOD</b>             |
|                      | <b>EXT</b>    | <b>EXTREME</b>                   |