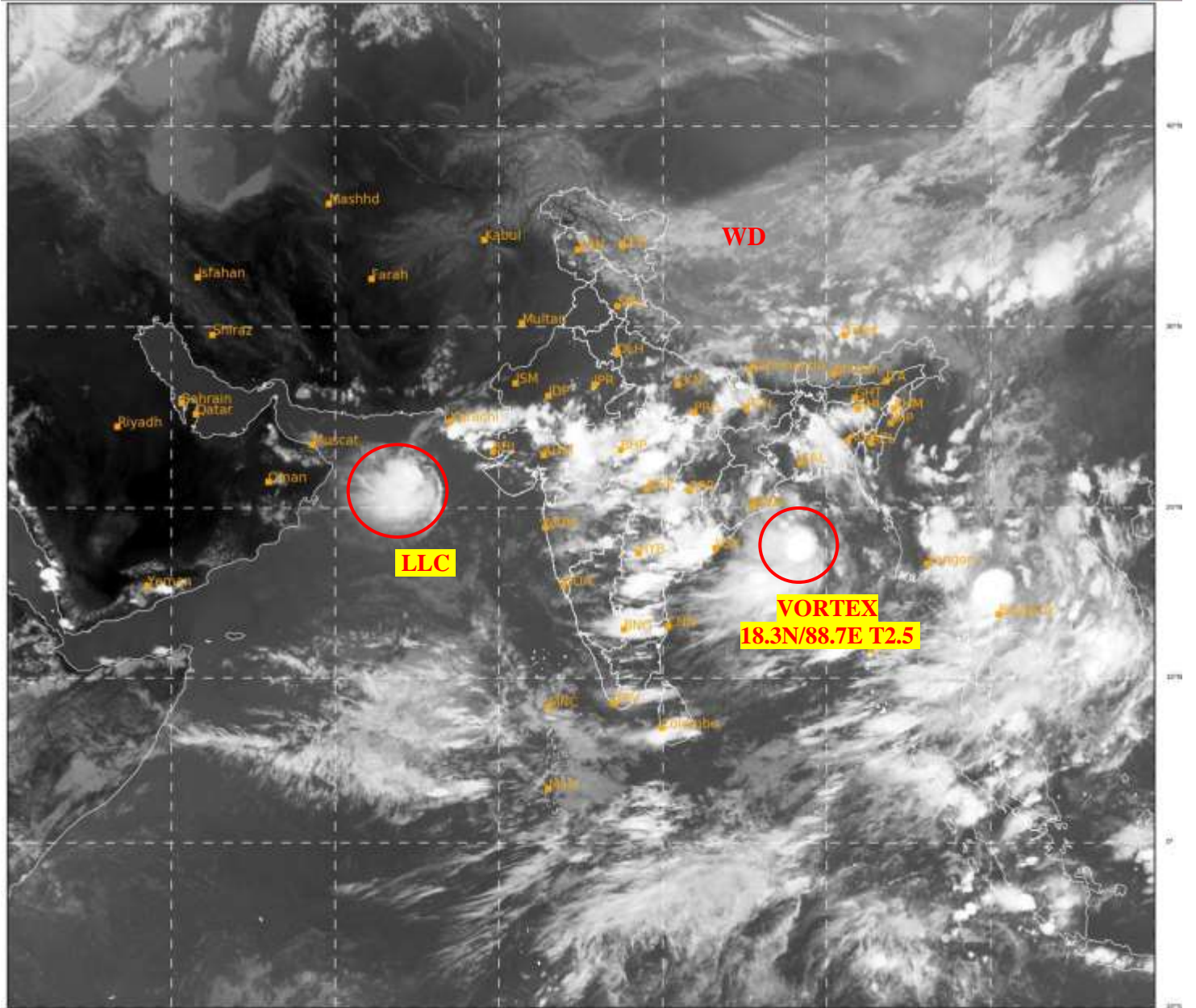




SATELLITE BULLETIN BASED ON SATELLITE
IMAGERIES AND PRODUCTS
25.09.2021 TIME 1200 UTC

SAT : INSAT-3D IMG
IMG_TIR1 10.8 um
LIC Mercator

25-09-2021/(1200 to 1226) GMT
25-09-2021/(1730 to 1756) IST



383

947

IMD, DELHI

TCIN50 DEMS 251200

SATELLITE BULLETIN BASED ON INSAT-3D PIC OF 251200 UTC (.)

REGION COVERED BETWEEN LAT 50.0°N TO 30.0°S AND LONG 40.0°E TO 125.0°E (.)

SALIENT FEATURES:-

VORTEX OVER NE ADJ EC BAY:-

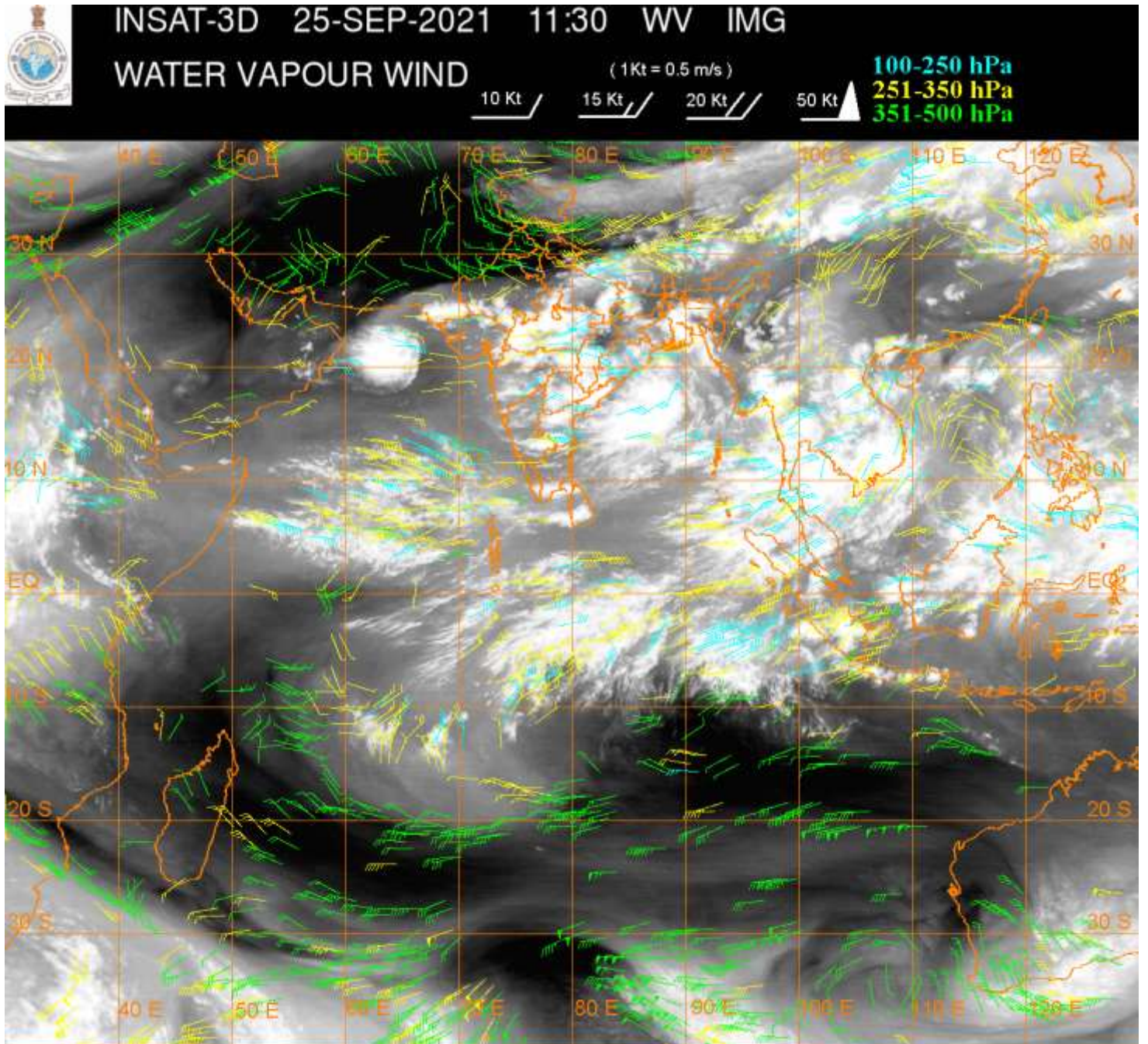
VORTEX OVER NWADJ WC BAY HAS INTENSIFIED FURTHER AND NOW LAY CENTERED NEAR **18.3N/88.7E** (.) INTENSITY **T 2.5 RPT 2.5** (.) ASSTD BKN LOW/MED CLOUDS WITH EMBDD INT TO V INT CONVTN OVER NORTH ADJ CENTRAL BAY BET LAT 16.0N TO 20.0N LONG 87.0E TO 91.5E (.) MINIMUM CTT MINUS **93** DEG C (.)

LLC OVER NE ARSEA:-

SCT LOW/MED CLOUDS WITH EMBDD INT TO V INT CONVTN OVER NC ARSEA IN ASSW FEEBLE LOW LEVEL CIRCULATION (**LLC**) OVER THE AREA (.) MINIMUM CTT MINUS **89** DEG C (.)

WESTERN DISTURBANCE (WD):-

SCT MULTILAYERED CLOUDS OVER E LADAKH HP UTRKND TIBET ADJ CHINA IN ASSW WD OVER THE AREA (.)



CLOUDS DESCRIPTION WITHIN INDIA:-

NORTH:-

BKN LOW/MED CLOUDS WITH EMBDD INT TO V INT CONVTN OVER SC & E UP (MINIMUM CTT MINUS 85 TO 93 DEG C) (.) SCT LOW/MED CLOUDS WITH EMBDD MOD TO INT CONVTN OVER S UTRKND C UP AND WK TO MOD CONVTN OVER LADAKH J&K HP REST UTRKND REST UP (.) SCT LOW/MED CLOUDS OVER NW PJB SE HARY DLH (.)

EAST:-

SCT LOW/MED CLOUDS WITH EMBDD INT TO V INT CONVTN OVER NW & EXT EC BHR ADJ JHRKND S CHTGH EXT NE & SW ORS EC GWB MEGHA EXT C ASSAM & S BD (MINIMUM CTT MINUS 73 TO 93 DEG C) (.) SCT LOW/MED CLOUDS WITH EMBDD MOD TO INT CONVTN OVER SW BHR NW CHTGH REST ORS W GWB S SHWB EXT SW NAGA ADJ NW MANI TRP S MIZO (.) SCT LOW/MED CLOUDS WITH EMBDD WK CONVTN N&E JHRKND S GWB REST SHWB SKM N ARUPR (.) SCT LOW/MED CLOUDS OVER REST BHR REST CHTGH REST JHRKND NE STATES (.)

WEST:-

SCT LOW/MED CLOUDS WITH EMBDD INT TO V INT CONVTN OVER SE RAJ MP NORTH MADHYA MAHA E VID (MINIMUM CTT MINUS 84 DEG C) (.) SCT LOW/MED CLOUDS WITH EMBDD MOD TO INT CONVTN OVER N GUJ REST MAHA (.) SCT LOW/MED CLOUDS WITH EMBDD ISOL WK TO MOD CONVTN OVER REST GUJ (.) SCT LOW/MED CLOUDS OVER REST RAJ KKN & GOA (.)

SOUTH:-

SCT LOW/MED CLOUDS WITH EMBDD INT TO V INT CONVTN OVER NW & S TLNGN AP RYLSM N TN S NICOBAR ILS (MINIMUM CTT MINUS **81 TO 93** DEG C) (.) SCT LOW/MED CLOUDS WITH EMBDD MOD TO INT CONVTN OVER EXT N NIK S SIK REST TN ANDAMAN & REST NICOBAR ILS (.) SCT LOW/MED CLOUDS WITH EMBDD WK TO MOD CONVTN OVER REST TLNGN REST KRNTK KER LKSDP (.) SCT LOW/MED CLOUDS OVER REST TN (.)

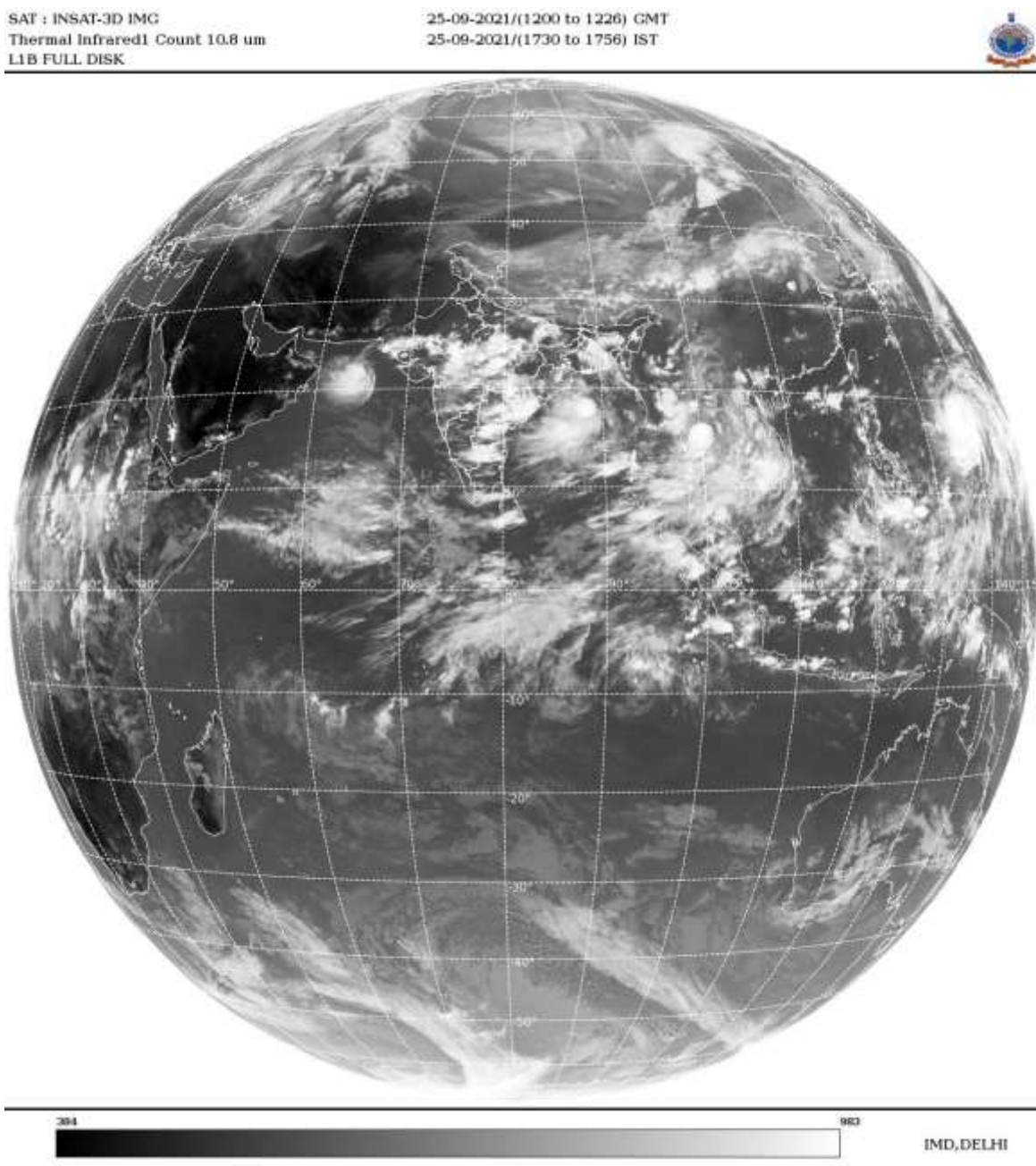
ARABIAN SEA:-

SCT LOW/MED CLOUDS WITH EMBDD INT TO V INT CONVTN OVER NC ARSEA AND MOD TO INT CONVTN OVER S ARSEA COMORIN (.)

BAY OF BENGAL & ANDAMAN SEA:-

SCT TO BKN LOW/MED CLOUDS WITH EMBDD INT TO V INT CONVTN OVER BAY ANDAMAN SEA (.)

CLOUDS DESCRIPTION OUTSIDE INDIA:-



SCT LOW/MED CLOUDS WITH EMBDD MOD TO INT CONVTN OVER SRILANKA PALK STR MALDIVES TIBET CHINA YELLOW SEA E CHINA SEA S TAIWAN MYANMAR THAILAND GULF OF THAILAND CAMBODIA LAOS VIETNAM GULF OF TONKIN HAINAN SUMATRA STR OF MALACCA MALAY PENINSULA BORNEO SOUTH CHINA SEA JAVA ILS CELEBES ILS & SEA PHILIPPINES SULU SEA AND OVER THE INDIAN OCEAN BET LAT5.0N TO 14.0S LONG 51.0E TO 103.0E (.)

TOO 25/1910EF=

NNNN

LEGEND:-

REGION	NORTH	J&K HP PJB HARY DLH UP UTRKND
	EAST	BHR JHRKND CHTGH ORS WB SKMNORTH- EAST STATES
	WEST	RAJ MP GUJ MAHA GOA
	SOUTH	TLNGN AP KRNTK KER TN LKSDP ANDAMAN & NICOBAR ILS

CLOUD DISTRIBUTION	ISOL	ISOLATED (LESS THAN 25%)
	SCT	SCATTERED (25 TO 50%)
	BKN	BROKEN (51 TO 75%)
	SLD	SOLID (GREATER THAN 75%)
CLOUDS TOP TEMPERATURE	CTT	CLOUD TOP TEMPERATURE
CONVECTION	WK CONVTN	WEAK CONVECTION (CTT GREATER THAN -25°C)
	MOD CONVTN	MODERATE CONVECTION (CTT BETWEEN -25°C TO -40°C)
	INT CONVTN	INTENSE CONVECTION (CTT BETWEEN -41°C TO -70°C)
	V INT CONVTN	VERY INTENSE CONVECTION (CTT LESS THAN -70°C)
METEOROLOGICAL SUB-DIVISIONS, STATES & UNION TERRITORIES	ARUPR	ARUNACHAL PRADESH
	BHR	BIHAR
	CHTGH	CHHATTISGARH
	COTL AP	COASTAL ANDHRA PRADESH
	COTL KRNTK	COASTAL KARNATAKA
	COTL ORS	COASTAL ORISSA
	GUJ	GUJARAT
	GWB	GANGETIC WEST BENGAL
	HARY	HARYANA
	DLH	DELHI
	HP	HIMACHAL PRADESH
	J&K	JAMMU AND KASHMIR
	JHRKND	JHARKHAND
	KER	KERALA
	KKN	KONKAN
	LKSDP	LAKSHADWEEP
	M MAHA	MADHYA MAHARASHTRA
	MAHA	MAHARASHTRA
	MANI	MANIPUR
	MEGHA	MEGHALAYA
	MIZO	MIZORAM
MP	MADHYA PRADESH	
	MRTHWD	MARATHWADA
	NAGA	NAGALAND
	N COTL AP	NORTH COASTAL ANDHRA PRADESH

	NIK	NORTH INTERIOR KARNATAKA
	ORS	ORISSA
	PJB	PUNJAB
	RAJ	RAJASTHAN
	RYLSM	RAYALASEEMA
	SAU & KUTCH	SAURASHTRA & KUTCH
	SHWB	SUB-HIMALAYAN WEST BENGAL
	SIK	SOUTH INTERIOR KARNATAKA
	SKM	SIKKIM
	TLNGN	TELANGANA
	TN	TAMIL NADU
	TRP	TRIPURA
	UP	UTTAR PRADESH
	UTRKN	UTTARAKHAND
	VID	VIDHARBHA
	SHWB	SUB HIMALAYAN WEST BENGAL
	GWB	GANGETIC WEST BENGAL
	ARSEA	ARABIAN SEA
	ILS	ISLANDS
MISCELLANEOUS	ASSW	IN ASSOCIATION WITH
	ASSTD	ASSOCIATED
	LLC	LOW LEVEL CIRCULATION
	EMBDD	EMBEDDED
	N/HOOD	NEIGHBOURHOOD
	EXT	EXTREME